



JSP159 Tuya smart IP Camera App User Guide

[Home](#) » [Tuya Smart](#) » JSP159 Tuya smart IP Camera App User Guide 

Contents

- [1 JSP159 Tuya smart IP Camera App](#)
- [2 Product Information](#)
- [3 Product Usage Instructions](#)
- [4 Download APP](#)
- [5 Configuration](#)
- [6 View the live stream](#)
- [7 FCC STATEMENT](#)
- [8 Documents / Resources](#)
- [9 Related Posts](#)



JSP159 Tuya smart IP Camera App



Product Information

Tuya Smart IP Camera

The Tuya Smart IP Camera is a wireless camera that allows you to monitor your home or office remotely through your mobile device. It comes with a mobile application that can be downloaded from major application markets or by scanning the QR code provided in the user manual. This device complies with part 15 of the FCC rules and should be installed and operated with a minimum distance of 20cm between the radiator and your body.

Product Usage Instructions

1. Download the Tuya Smart application from major application markets or scan the QR code provided in the user manual.
2. Register with your mobile number or email and login to the application.
3. Configure the camera by following these steps:
 - Tap "Add Device" or the "+" icon in the top right corner of the application.
 - Choose "Smart Camera" as the device type.
 - Make sure the indication light is flashing quickly and click "Next Step".
 - Enter your WiFi password and click "+".
 - When you tap "Continue", a QR code will be displayed on your mobile phone. Hold the camera 15 to 20cm in front of the mobile phone for the camera to scan the QR code. Please click "heard the beep" when the device has voice tips.

4. Choose a name for the device and click “Done” to view the live stream.

Note: Any changes or modifications not expressly approved by the party responsible for compliance could void the user’s authority to operate the equipment.

Download APP



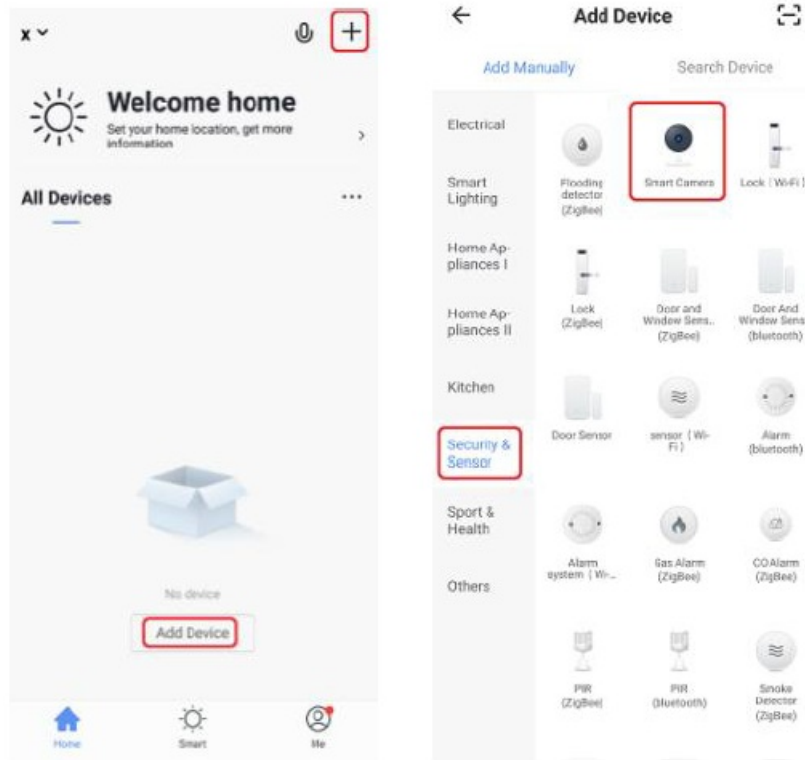
- Search and download “Tuya smart” in major application markets or scan the QR Code below to download the APP.

Register with your mobile number/E-mail then login

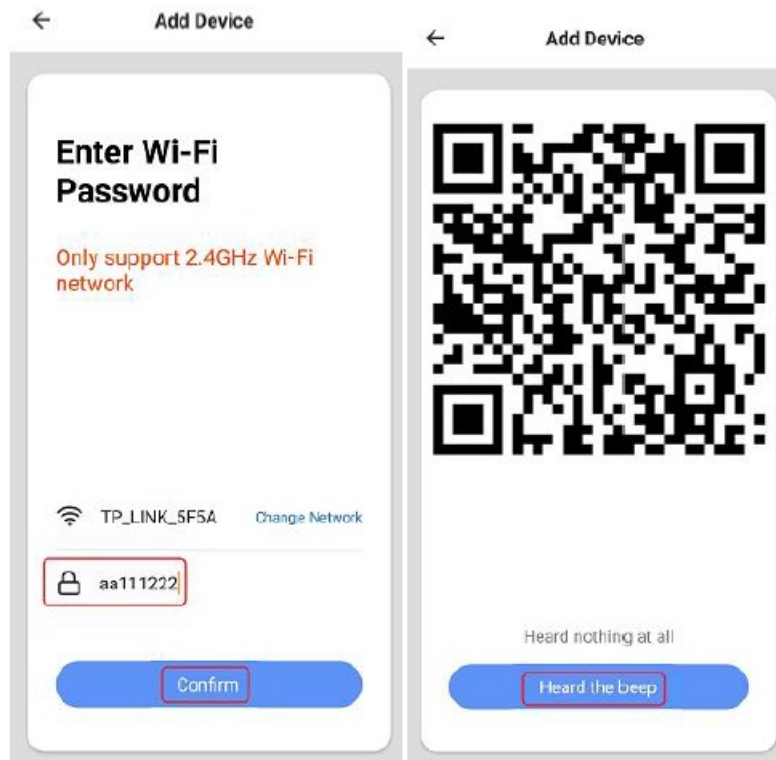
The image shows the registration screen of the Tuya Smart app. On the left is a blurred background image of a person using a smart device with the Tuya logo overlaid and a 'Register' button. On the right is a white registration form with a back arrow at the top. The form has a title 'Register', a country selector set to 'China +86', a text input field for 'Mobile number/e-mail address', and a grey 'Obtain verification code' button. At the bottom, there is a checkbox for 'I agree with Service Agreement and Privacy Policy'.

Configuration

QR code network configuration

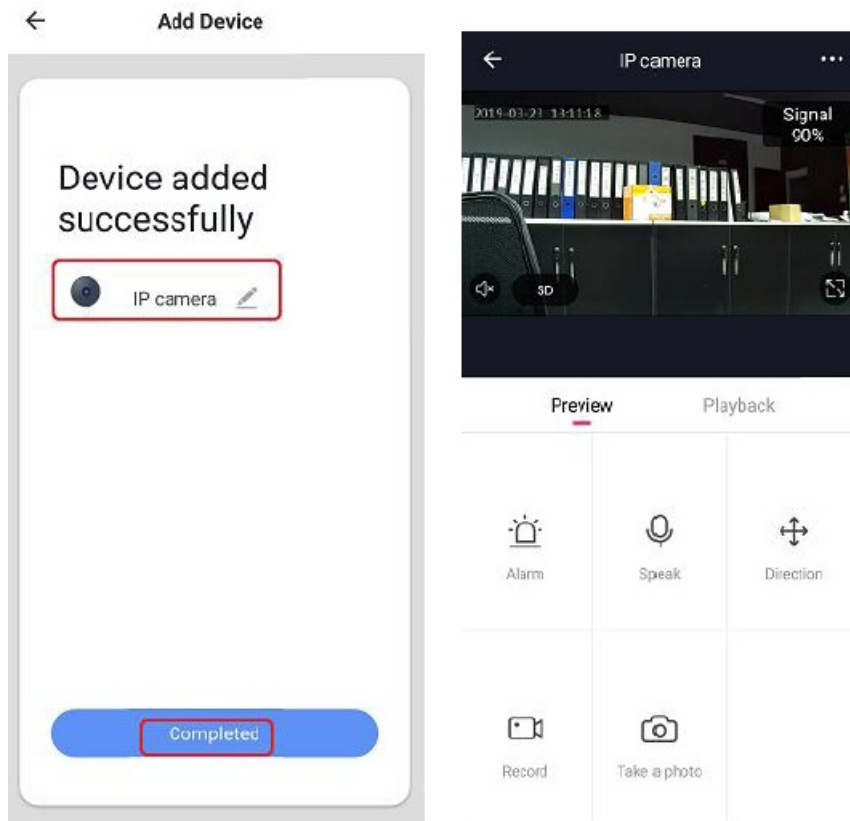


- Tap “Add Device” or the icon “+” in the top right corner
- Choose “Smart Camera” in the Device type
- Make sure the indicator is flashing quickly and click “next step”



Enter your WiFi password and Click “+”, When you tap Continue, the mobile phone displays a QR code, Hold the camera 15 to 20cm in front of the mobile phone for the camera to scan the QR code Please click “heard the beep” when the device have voice tips.

View the live stream



- Choose a name for the device and click “Done”to view the live stream

FCC STATEMENT

This device complies with part 15 of the FCC Rules. Operation is subject to the following two conditions:

1. This device may not cause harmful interference.
2. This device must accept any interference received, including interference that may cause undesired operation.


Any Changes or modifications not expressly approved by the party responsible for compliance could void the user’s authority to operate the equipment.

Note: This equipment has been tested and found to comply with the limits for a Class B digital device, pursuant to part 15 of the FCC Rules. These limits are designed to provide reasonable protection against harmful interference in a residential installation. This equipment generates uses and can radiate radio frequency energy and, if not installed and used in accordance with the instructions, may cause harmful interference to radio communications. However, there is no guarantee that interference will not occur in a particular installation. If this equipment does cause harmful interference to radio or television reception, which can be determined by turning the equipment off and on, the user is encouraged to try to correct the interference by one or more of the following measures:

- Reorient or relocate the receiving antenna.
- Increase the separation between the equipment and receiver.
- Connect the equipment into an outlet on a circuit different from that to which the receiver is connected.
- Consult the dealer or an experienced radio/TV technician for help.

This equipment complies with FCC radiation exposure limits set forth for an uncontrolled environment. This equipment should be installed and operated with minimum distance 20cm between the radiator & your body.

Documents / Resources

	<p>Tuya Smart JSP159 Tuya smart IP Camera App [pdf] User Guide JSP159 Tuya smart IP Camera App, JSP159, Tuya smart IP Camera App, IP Camera App, Camera App</p>
---	---