



Video guide:



Tutis UNO<sup>3</sup> carrycot and seat unit is compatible with Tutis UNO<sup>3</sup>+ chassis only.

## Contents

### 1 INSIDE THE BOX

### 2 FUNCTIONS

### 3 CHASSIS FOLDING

### 4 INSERT AND REMOVE CARRYCOT

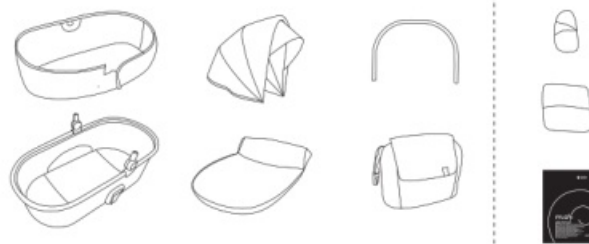
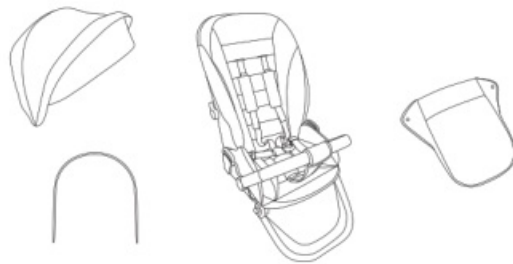
### 5 SEAT UNIT

### 6 ACCESSORIES

### 7 Documents / Resources

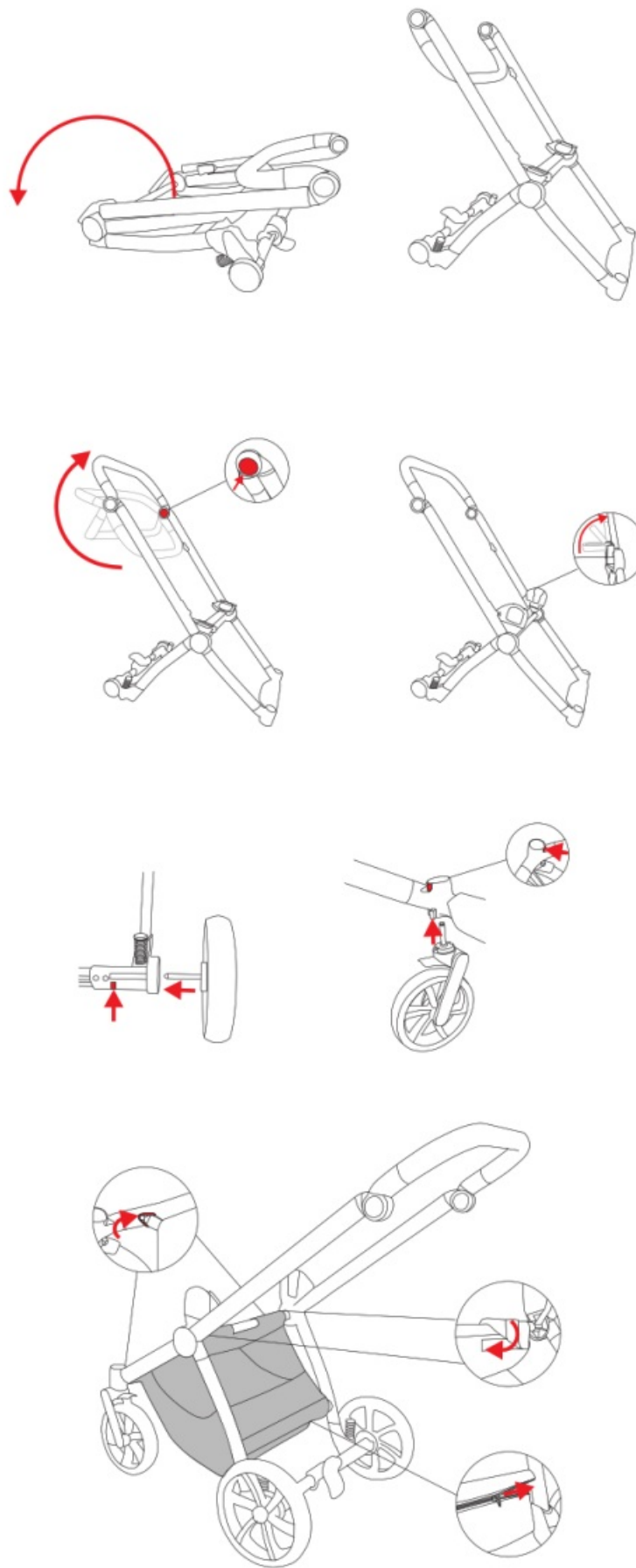
#### 7.1 References

## INSIDE THE BOX



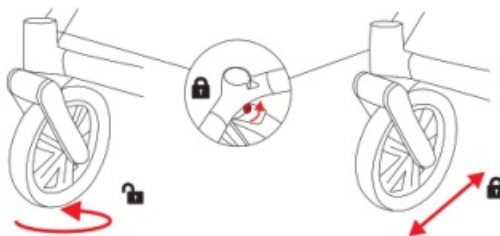
## CHASSIS

### Set-up

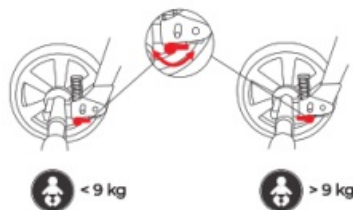


## FUNCTIONS

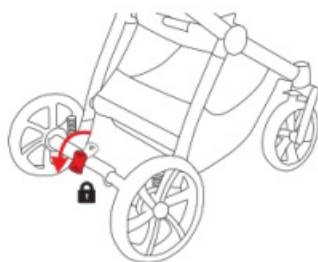
#### Wheels



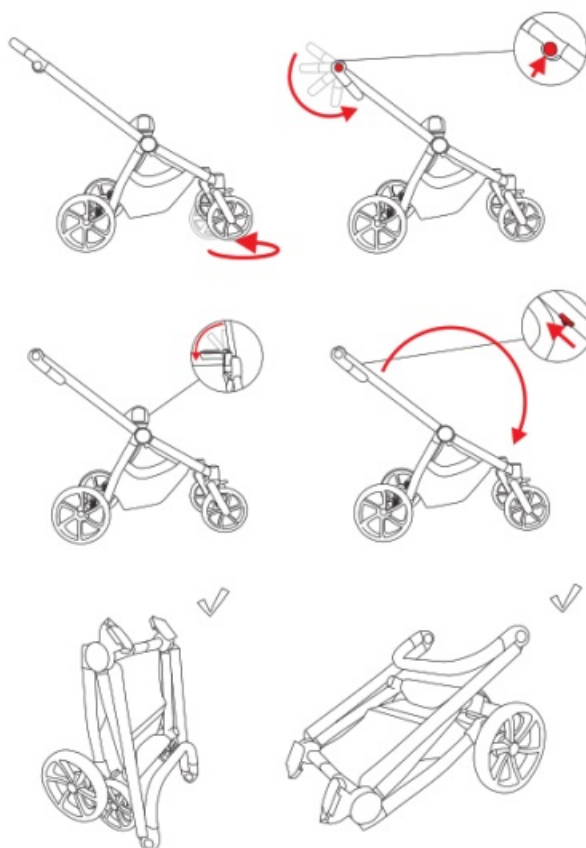
#### Suspension

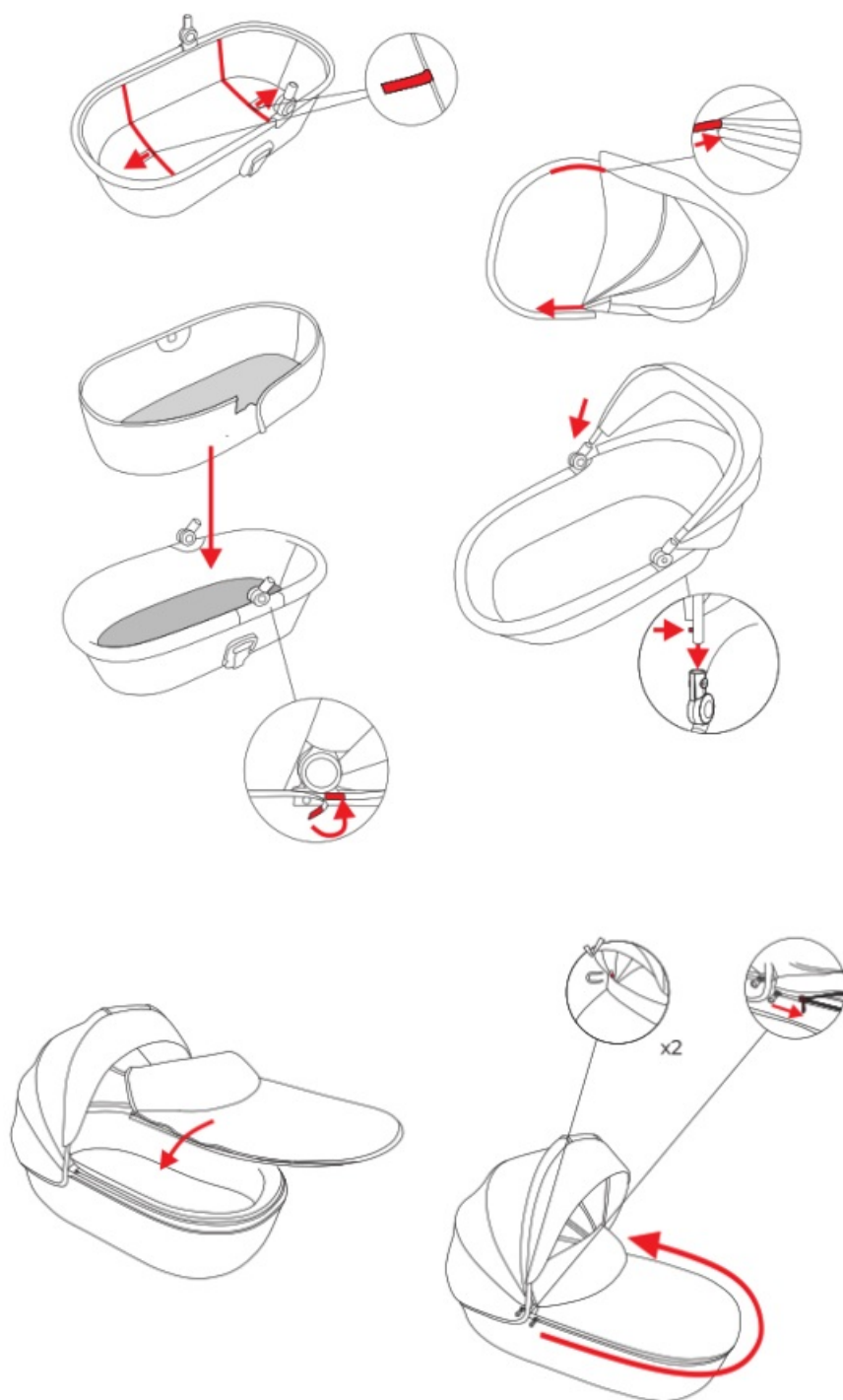


#### Parking brake



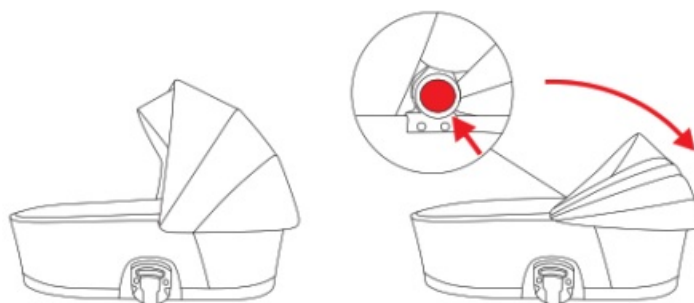
## CHASSIS FOLDING





## FUNCTIONS

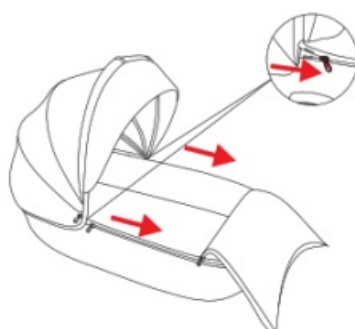
### Canopy folding



### Carrycot folding



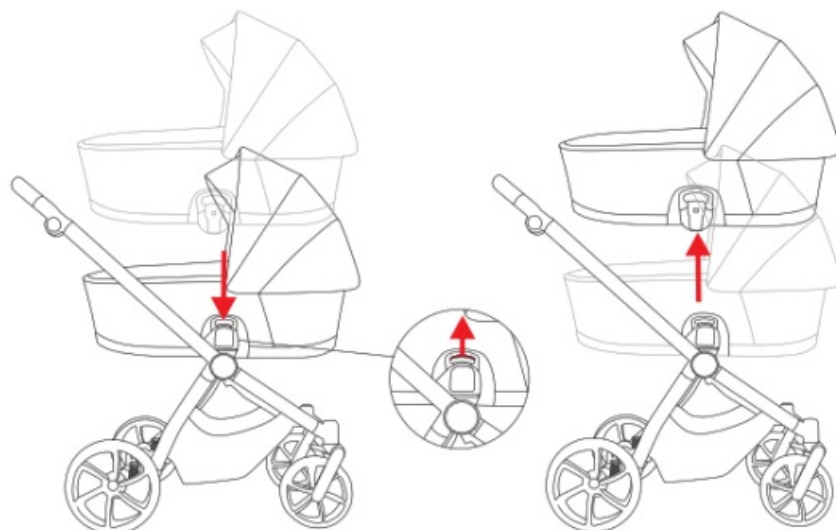
### Foot cover



### Ventilation



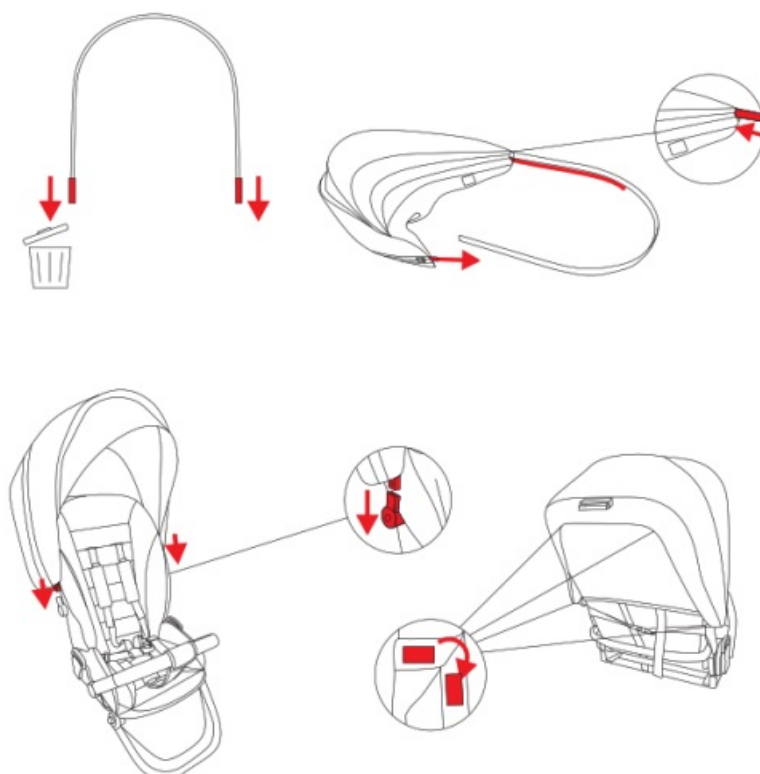
## INSERT AND REMOVE CARRYCOT



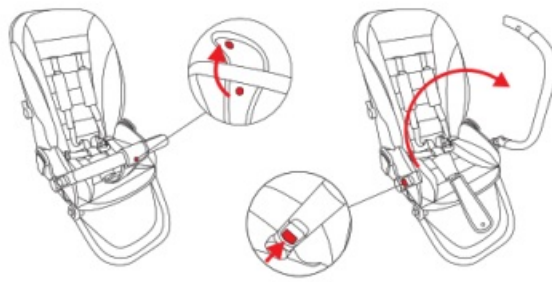
## SEAT UNIT

### SET-Up

#### Canopy



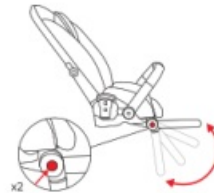
### Bumper bar



### Harness



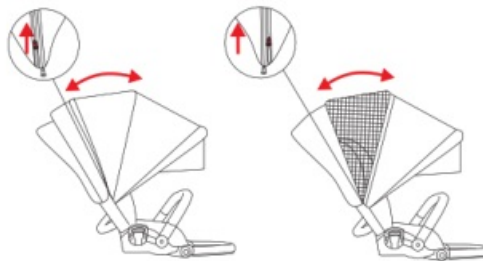
### Footrest



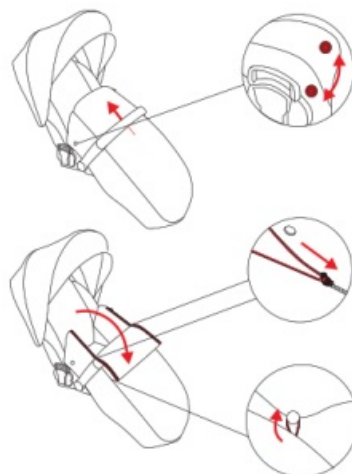
### Buckle



### Ventilation

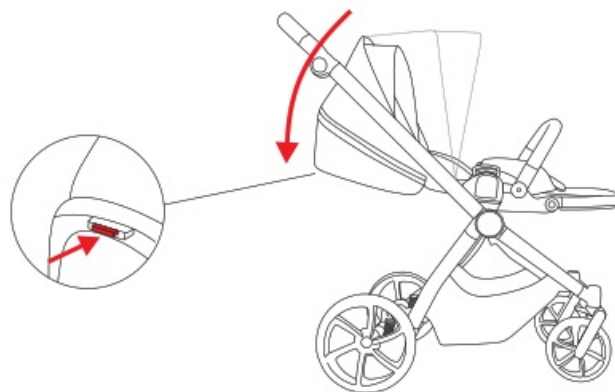


### Foot cover

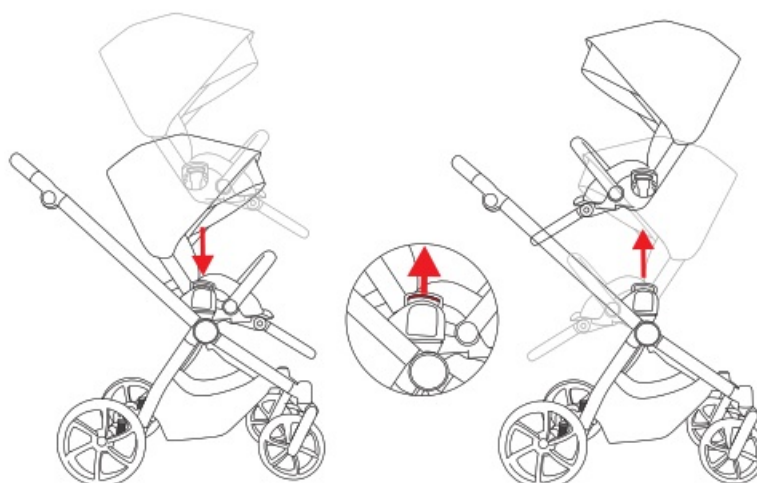




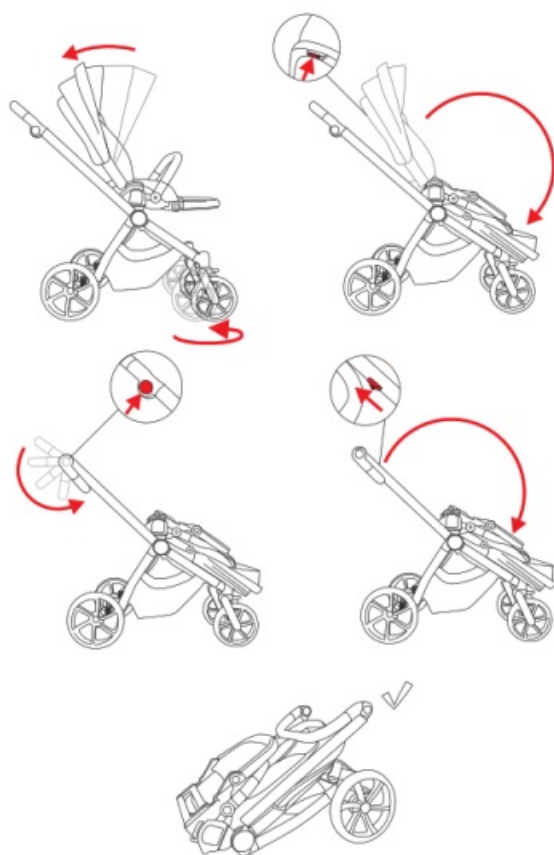
Backrest



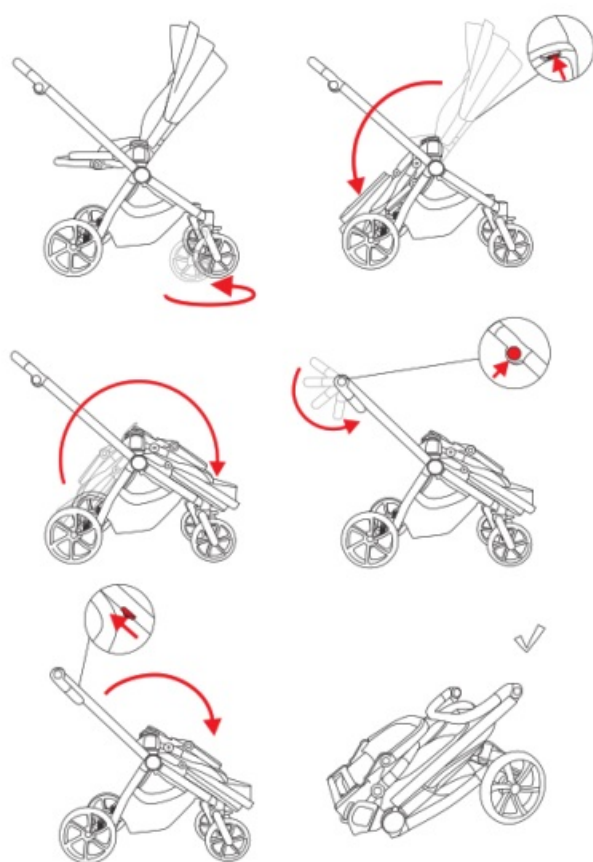
## INSERT AND REMOVE SEAT



## FOLDING WITH SEAT UNIT 1

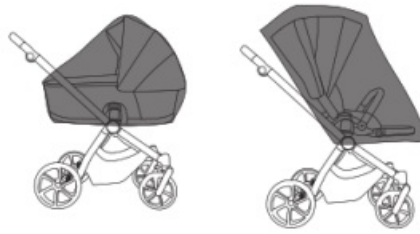


## FOLDING WITH SEAT UNIT 2

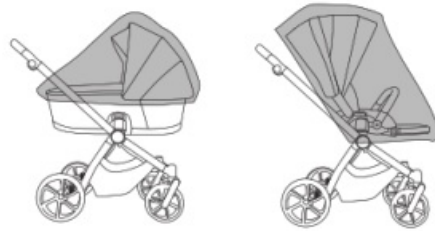


## ACCESSORIES

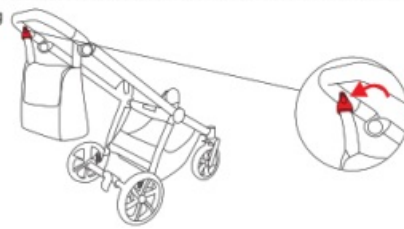
Rain cover



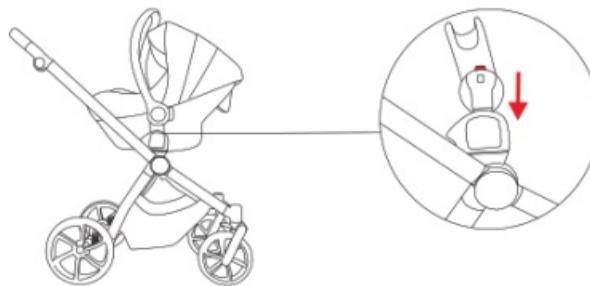
Mosquito net



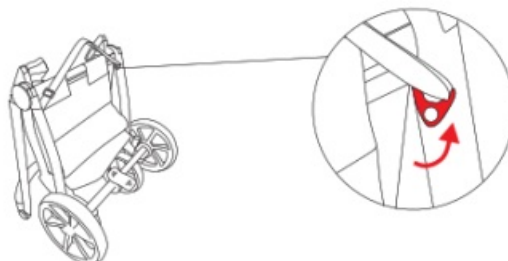
Diaper bag



Car seat adapters



Shoulder strap



## SERVICE AND MAINTENANCE RECORD

Date	Descriptoon	Signature

Date of purchase:

Warranty period:

Seller:

For more information

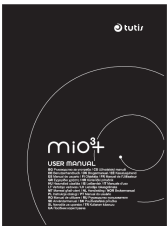
<https://service.tutis.it/>

E-mail: [support@tututis.it](mailto:support@tututis.it)

CK4141 240527 Rev. A



## Documents / Resources

	<p><a href="#">Tutis Mio 3+ Stroller [pdf]</a> User Manual CK4155, mio3, Mio 3 Stroller, Mio 3, Stroller</p>
---	--

## References

- [User Manual](#)

[Manuals+.](#) [Privacy Policy](#) | [@manuals.plus](#) | [YouTube](#)

This website is an independent publication and is neither affiliated with nor endorsed by any of the trademark owners. The "Bluetooth®" word mark and logos are registered trademarks owned by Bluetooth SIG, Inc. The "Wi-Fi®" word mark and logos are registered trademarks owned by the Wi-Fi Alliance. Any use of these marks on this website does not imply any affiliation with or endorsement.