



TUSON NG9112 Multi-Function Tool Instruction Manual

[Home](#) » [TUSON](#) » TUSON NG9112 Multi-Function Tool Instruction Manual 

Contents

- 1 TUSON NG9112 Multi-Function Tool
- 2 INSTALLATION
 - 2.1 What do the symbols mean?
- 3 Symbols in the machine
- 4 Your machine at a glance
 - 4.1 Scope of supply
- 5 Tool changing
- 6 Operation
- 7 Cleaning
 - 7.1 Cleaning at a glance
- 8 Disposal
- 9 Troubleshooting
- 10 Documents / Resources
- 11 Related Posts



TUSON NG9112 Multi-Function Tool



INSTALLATION

Proper use

The machine is intended for sawing, grinding and scraping of wood, plastic and metals. The machine is intended exclusively for domestic use and not for industrial purposes. Any improper use or use for any activities on the machine

other than those described in these operating instructions shall be classed as inadmissible misuse and relieve the manufacturer from all legal liability limits.

What do the symbols mean?

In the operating instructions

Hazard warnings and information signs are clearly marked in the operating instructions. The following symbols are used:

- Read the operating instructions before use.
Observe all safety information.
- **DANGER**
Type and source of danger Failure to observe the hazard warnings can put life and limb at risk.
- **WARNING**
Type and source of danger
Failure to observe the hazard warning can put life and limb at risk.
- **CAUTION**
Type and source of danger
This hazard warning warns against damage to the machine, environment or other property.
- **Instruction:**
This symbol identifies information that is provided to improve understanding of the processes.

Attention!

These symbols identify the required personal protective equipment.
General safety information for electrical tools

WARNING

Risk of injury!

- Read all safety information and instructions. Failure to observe the safety information and instructions can cause electric shock, fire and/or serious injury.
- Keep all safety information and instructions in a safe place for future use.
- Keep working areas clean and well-illuminated. Untidiness and unlit working areas can lead to accidents.
- Keep children and other persons away when using electrical tools. Distractions may cause you to lose control of the machine.
- Persons unable to safely and carefully use the machine due to physical, psychological and neural reasons must not use the machine.
- Store the machine so that it cannot be put back into operation by unauthorized persons. Ensure that nobody can injure themselves on the machine while it is stationary.

Electrical safety

- The connector plug on the electrical tool must fit into the socket. Do not make any modifications to the plug. Do not use earthed electrical tools in conjunction with an adapter. Unmodified plugs and suitable sockets reduce the risk of electric shock.
- Avoid physical contact with grounded surfaces, such as those of pipes, radiators, cookers and refrigerators. The risk of electric shock increases if your body is earthed.
- Keep electrical tools away from rain and wet. The risk of electric shock increases if water penetrates an electrical tool.
- Do not use the cable to carry or hang up the electrical tool or to pull the plug out of the socket. Keep the cable away from heat, oil, sharp edges and any moving machine parts. Damaged or tangled cables increase the risk of electric shock.
- If the connecting cable becomes damaged, it must be replaced by an expert.
- If you use an electrical tool outdoors, use only extension cables suitable for outdoor use. The use of an extension cable that is suitable for outdoor applications reduces the risk of an electric shock.
- If operating the electrical tool in a damp environment cannot be avoided, use a fault current circuit breaker with a trip current of 30 mA or less. The use of a fault-current circuit breaker reduces the risk of electric shock.

Safety in the workplace

- Do not work with electrical tools in potentially explosive environments containing flammable liquids, gases or dusts. Electrical tools produce sparks that can ignite dust or vapors.

Personal safety

- Be vigilant, observe what you are doing and proceed with caution when working with an electrical tool. Do not use electrical tools if you are tired or under the influence of drugs, alcohol or medication. Momentary distraction when using the electrical tool can result in serious injury.
- Wear personal protective equipment and always use safety goggles. Wearing personal safety equipment such as dust mask, anti-slip safety shoes, safety helmet or hearing protection appropriate for the electrical tool type and application reduces the risk of injury.
- Avoid unintentional operation. Make sure that the electrical tool is switched off before it is connected to the power supply, picked up or carried. Carrying the electrical tool with your finger on the switch or connected to the power supply can lead to accidents.
- Remove the setting tools or Allen key before switching on the electrical tool. A tool or spanner situated in a rotating part of the machine can result in injury.

- Avoid an abnormal posture. Make sure you are standing securely and remain balanced at all times. This will enable you to keep better control in unexpected situations.
- Wear suitable clothing. Do not wear loose clothing or jewelry. Keep hair, clothing and gloves away from moving parts. Loose clothing, jewelry or long hair can get caught up in moving parts.
- If dust extraction and collection devices can be fitted, make sure that they are connected and used correctly. Using a dust extractor can reduce the risks caused by dust.

Raynaud's syndrome (White-finger syndrome)

WARNING

Risk of injury

Frequent use of vibrating machines can cause damage to the nerves of persons whose blood flow is impaired (e.g. smokers, diabetics). Fingers, hands, wrists and/or arms, in particular, show some or all of the following symptoms: Pain, prickling, twinges, deadening of limbs, pale skin.

If you notice anything unusual, stop working immediately and consult a physician.

You can substantially reduce the risks if you adhere to the following instructions:

- Keep your body and particularly your hands warm in cold weather. Working with cold hands is the main cause!
- Take regular breaks and move your hands. This encourages circulation. Ensure that the machine vibrates as little as possible through regular maintenance and tight-fitting parts.

Careful handling and use of electrical tools

WARNING Risk of injury

- Always keep electrical tools out of the reach of children. Do not allow the machine to be used by anyone who is not familiar with it or has not read these instructions. Electrical tools are dangerous if used by inexperienced persons.

CAUTION Machine damage

- Do not overload the machine. Carry out your work using only the electrical tool intended. You will work more efficiently and safely if you use the correct electrical tool within its stated performance range.
- Do not use an electrical tool with a defective switch. An electrical tool that can be no longer switched on or off is dangerous and must be repaired.
- Pull the plug out of the socket before setting the machine, changing components or moving the machine. These precautionary measures will prevent the electrical tool from being started accidentally.
- Handle electrical tools with care. Check that moving parts are functioning properly and do not stick, whether parts are broken or have been damaged in a way that impairs the function of the electrical tool. Have the damaged parts repaired before you use the machine? Poorly maintained electrical tools are a common cause of accidents.
- Keep the ventilation slots of the motor clean. Clogged ventilation slots impair motor cooling and damage the electrical tool.
- Keep the cutting tools sharp and clean. Cutting tools with sharp cutting edges that have been treated carefully stick less and are easier to control.
- Use electrical tools, accessories, interchangeable tools etc. in accordance with these instructions. In doing so, take working conditions and the work to be performed into consideration. Using electrical tools for applications other than those intended can result in dangerous situations.
- Store the machine in a dry, well-ventilated place.


Instruction:

- Have your electrical tool repaired only by qualified technicians, using only genuine spare parts. This will maintain the safety of the electrical tool.

Machine-specific safety instructions

- As you work, handle the machine only at insulated, non-metallic places.
- Use the machine only if the mains cable and mains plug are undamaged. Should the cable become damaged during use, pull the mains plug out immediately.

WARNING Risk of injury

- Check all parts for completeness and proper function. Defective parts increase the risk of serious injury. Do not operate the machine.
- Use the machine only at mains power supplies that conform to the data on its rating plate. Operating from mains power supplies with unsuitable voltage can result in injury and property damage.
- Use the machine only according to its purpose  Proper use – Page 1132.
- Always keep the mains cable away from the work area around the machine. The cable can get caught up in oscillating parts and cause serious injury. Always keep cables behind the machine.
- Clamp the workpieces when working in a machine vice (not included in the delivery). Holding with the hand can cause injuries.
- Wait until the tools have come to a complete stop before storing or carrying the machine.
- If the machine jams, switch it off immediately. In case of jamming, for example, due to jam or overloaded, may result in backlash and serious injury.
- Use only proper and approved tools for the machine.
- Carefully work especially in the areas of corners, sharp edges etc. Avoid recoiling or jam tools from the workpiece. The oscillating tool tends to corners, sharp corners or if recoiled leading to jam. This cause loss of control or rebound.
- In case of other persons, pay heed to safe distance from their working area. Anyone who enters the working area must wear personal protective equipment. Fragments of the workpiece or broken tool may blow away and also cause injuries outside the direct working area. Work only when light and visibility are good.

WARNING Risk of burns

- Never touch the saw blade, sanding piece, tool or similar immediately after finishing work. These parts can reach elevated temperatures during work.

WARNING Health risk

- Wear a dust protection mask while you are working with the machine. Grinding, sawing or scraping can generate harmful dusts (wood dust, asbestos etc.).

Symbols in the machine

Symbols appearing on your machine may not be removed or covered.
Signs on the machine that are no longer legible must be replaced immediately.



-  Wear safety goggles to protect against flying swarf.



- Read the operating instructions before use. Observe the safety instructions.



- Wear a dust mask when working in a dusty environment.



- Wear hearing protection when working in a noisy environment.

Personal protective equipment



- Wear safety goggles to protect against flying swarf.



- Wear a dust mask when working in a dusty environment.



- Wear hearing protection when working in a noisy environment.



- Wear hair protection while working.



- Take off loose-fitting clothing and jewellery while working.



- Wear hand gloves while working.

Your machine at a glance

1. Tools

Saw blade / Sanding plate

2. On/off switch

3. Speed controller

4. Holder for Allen key

5. Extraction nozzle

Scope of supply

- Multitool
- Operating instructions
- Allen key
- 1× Straight cut blade
- 1× Sanding pad
- 1× Scraper blade
- 3× Sanding sheets (80/120/180)

Tool changing

WARNING

Risk of injury

Pull the mains plug from the socket before tool changing. The tool may be changed only if the machine is disconnected from the mains supply.

WARNING

Risk of injury

The tool may still be hot on completion of the work. There is a risk of burning! Allow a hot tool to cool down. Never clean a hot tool with flammable liquids.

WARNING

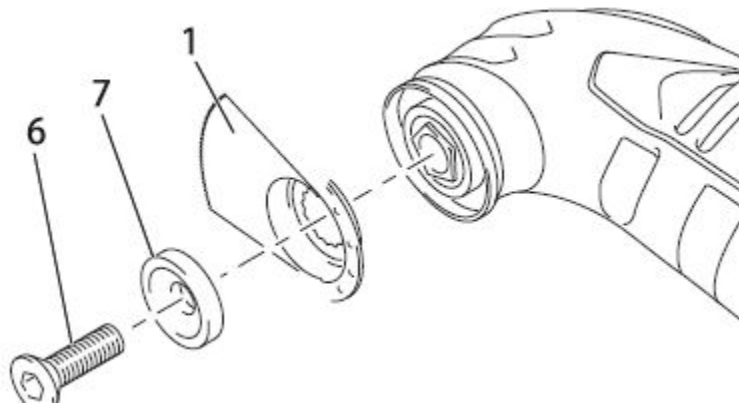
Risk of injury

Use only proper and approved tool. Bent tools may cause injuries and machine damage.

WARNING

Risk of being cut

Use safety gloves when changing tool.



- Disassemble fastening screw (6), centering ring (7) and tool (1) with allen key.
- Change the tool (1).
The sanding discs adhere to the sanding disc using Velcro.
- Assemble tool (1), centering ring (7) and fastening screw (6) with allen key.

Operation

Before inserting the mains plug into the socket and before each operation Check the secure condition of the machine:

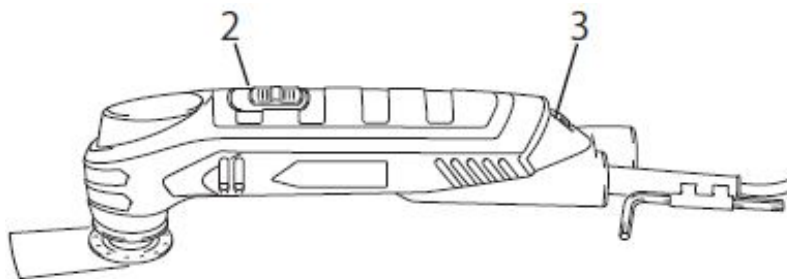
- Check whether there are any visible defects.
- Check whether all parts of the machine are firmly attached.

Switching on/off

CAUTION

Machine damage

Press the machine onto the workpiece only so that the motor revolutions do not drop too low and does not overload the motor and



- Plug in the mains plug.
- Push forward On/Off switch (2). The machine switches on.
- Push backward On/Off switch (2). The machine switches off.

Set the speed

- Set speed regulator (3) at the desired
 - height.
 - Stage 1: slow
 - Stage 6: quick

Cleaning

DANGER

Danger of electric shock!

Pull the mains plug from the socket before cleaning. Make sure that no water gets inside the machine.

CAUTION

Machine damage

Do not use caustic detergents to clean the machine. Ensure that liquids do not enter into the interior of the machine.

Cleaning at a glance

What?	How?
Remove dust from the ventilation slots of the motor on a regular basis, depending on the application conditions.	Use a vacuum cleaner, brush or paintbrush.
Clean the machine each time it is used.	Wipe down the machine with a slightly damp cloth.

Disposal

Disposing of the machine

Machines marked with the symbol shown opposite must not be disposed of in normal household waste. You are obliged to dispose of such machines separately.
Please ask your local authorities for information on the disposal options available. Separate disposal ensures that the machine is submitted for recycling of other forms of re-use. It means you are helping to prevent harmful materials being released into the environment.

Disposing of the packaging

The packaging consists of cardboard and appropriately marked films, which can be recycled.

- Take these materials to a recycling facility.

Troubleshooting

If something isn't working ...

WARNING

Risk of injury

Improper repairs can result in the machine functioning unsafely. This endangers yourself and your environment. Malfunctions are often caused by minor faults. You can easily remedy most of these yourself. Please consult the following table before contacting your local OBI store. You will save yourself a lot of trouble and possibly money too.

Fault/malfunction	Cause	Remedy
Machine will not start.	Is machine switched on?	☞ <i>Switching on/off</i>
	No current in machine?	Check mains cable, socket and fuse.
Output too low.	Is tool not suitable for material?	Attach suitable tool or sanding discs. ☞ <i>Tool changing</i>
	Sanding discs worn out?	☞ <i>Tool changing</i>


If you are unable to remedy the fault yourself, please contact your seller. Please be aware that any improper repairs will also invalidate the warranty and additional costs may be incurred.


Technical data

Rated voltage	230 V ~ / 50 Hz
---------------	--------------------


Rated output	220 W
Protection class	II
Rotational speed (Motor)	11000- 19000 rpm
Sound power level (L_{WA})*	98 dB (A)
Sound pressure level (L_{pA})*	87 dB (A)
Instability	K=3 dB (A)
Vibration	$a=3.3 \text{ m/s}^2$
Instability	K=1.5 m/s^2
Cable length	1,5 m

Documents / Resources







Head & shoulders
Head & shoulders model




Opening instructions
Main function tool




Head & shoulders
Head & shoulders model



Head & shoulders
Head & shoulders model



Opening instructions
Main function tool



Head & shoulders
Head & shoulders model

TUSON NG9112 Multi-Function Tool [pdf] Instruction Manual
NG9112 Multi-Function Tool, NG9112, Multi-Function Tool

Manuals+,