



# TURTLE BEACH VelocityOne Flightstick User Manual

[Home](#) » [TURTLE BEACH](#) » TURTLE BEACH VelocityOne Flightstick User Manual 

## Contents

- [1 TURTLE BEACH VelocityOne Flightstick](#)
- [2 Functional Characteristics](#)
- [3 Product diagram](#)
- [4 Display function Settings](#)
- [5 PC/XBOX mode switch method.](#)
- [6 Federal Communication Commission Interference Statement](#)
- [7 Industry Canada statement](#)
- [8 Documents / Resources](#)
- [9 Related Posts](#)



**TURTLE BEACH VelocityOne Flightstick**



## Summarize

The product will consist of an integrated rocker and a base with two analog shafts for throttle and additional controls. The product will be further enhanced with a smart OLED display system. Displays key product performance data on the display and allows deep customer configuration of the display content. The rest of the display will be implemented as input buttons that can be customized using text, symbols, and colors for more intuitive and fresh and stylish buttons

## Functional Characteristics

1. PC (D-input)& XBOX
2. X/Y/RZ axis adopts Hall chip contactless switch design
3. There are 7 axes, 1 POV and 31 independent action control keys
4. Built-in 2 motors, distributed in the middle part of the rocker and the base
5. Built-in OLED color display (resolution: 128\*64, 1.3-inch screen) with multi-screen scrolling and adjustable content
6. The center of the rocker base is equipped with a ring, which can easily adjust the display content and adjust product functions
7. 3.5mm audio stereo headphone port for external headphones
8. The machine interface 1: main interface USB C X1 2: Reserved Expansion Ports USB C X2
9. Local multi-color variable light effect, can adjust the adjustment of different colors
10. This machine supports Bluetooth wireless mobile APP game programming configuration, and Firmware upgrade

## Product diagram

### Front

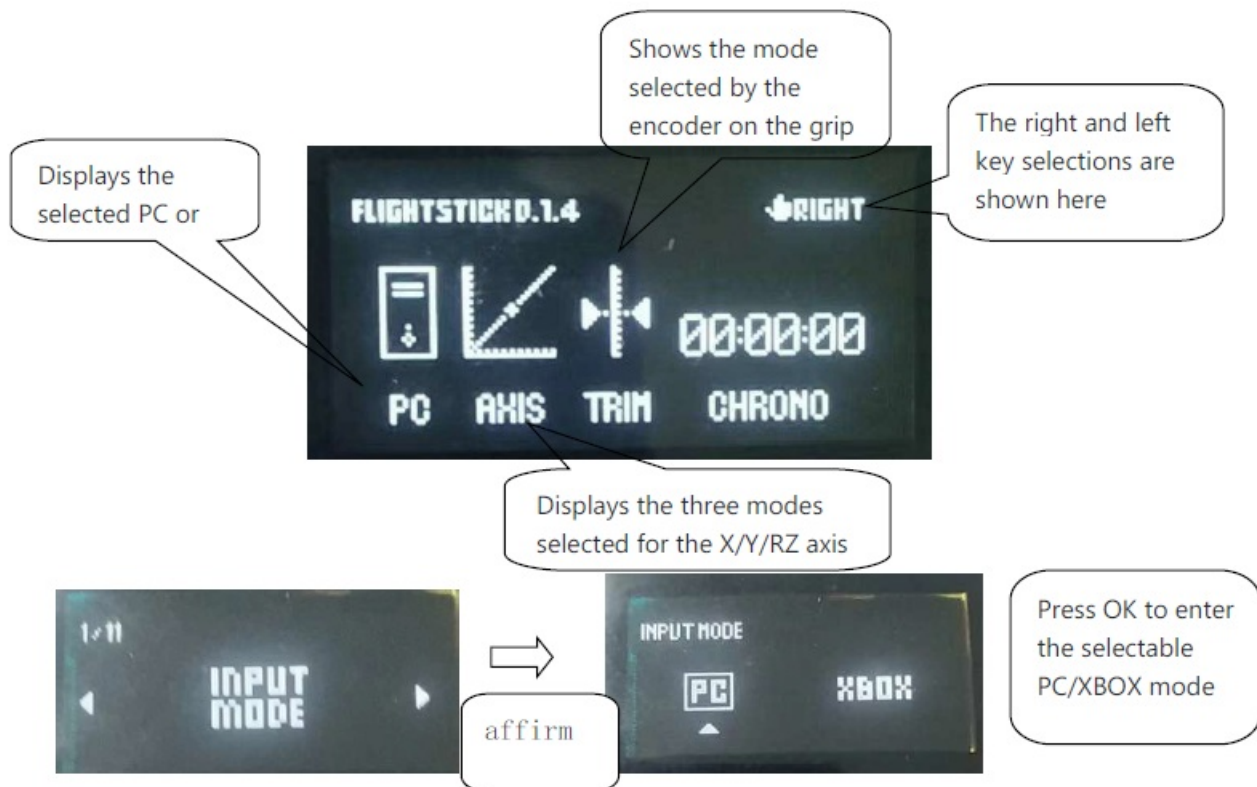


## Rocker interface diagram

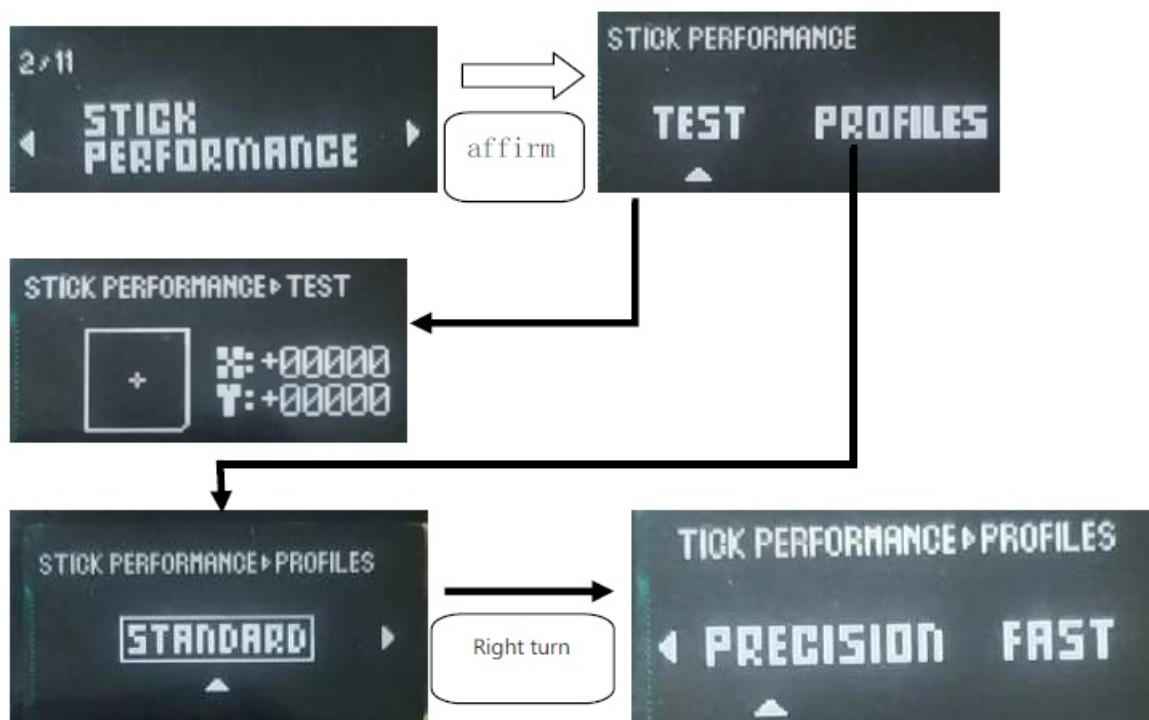


## Display function Settings

The PC mode display is shown as follows

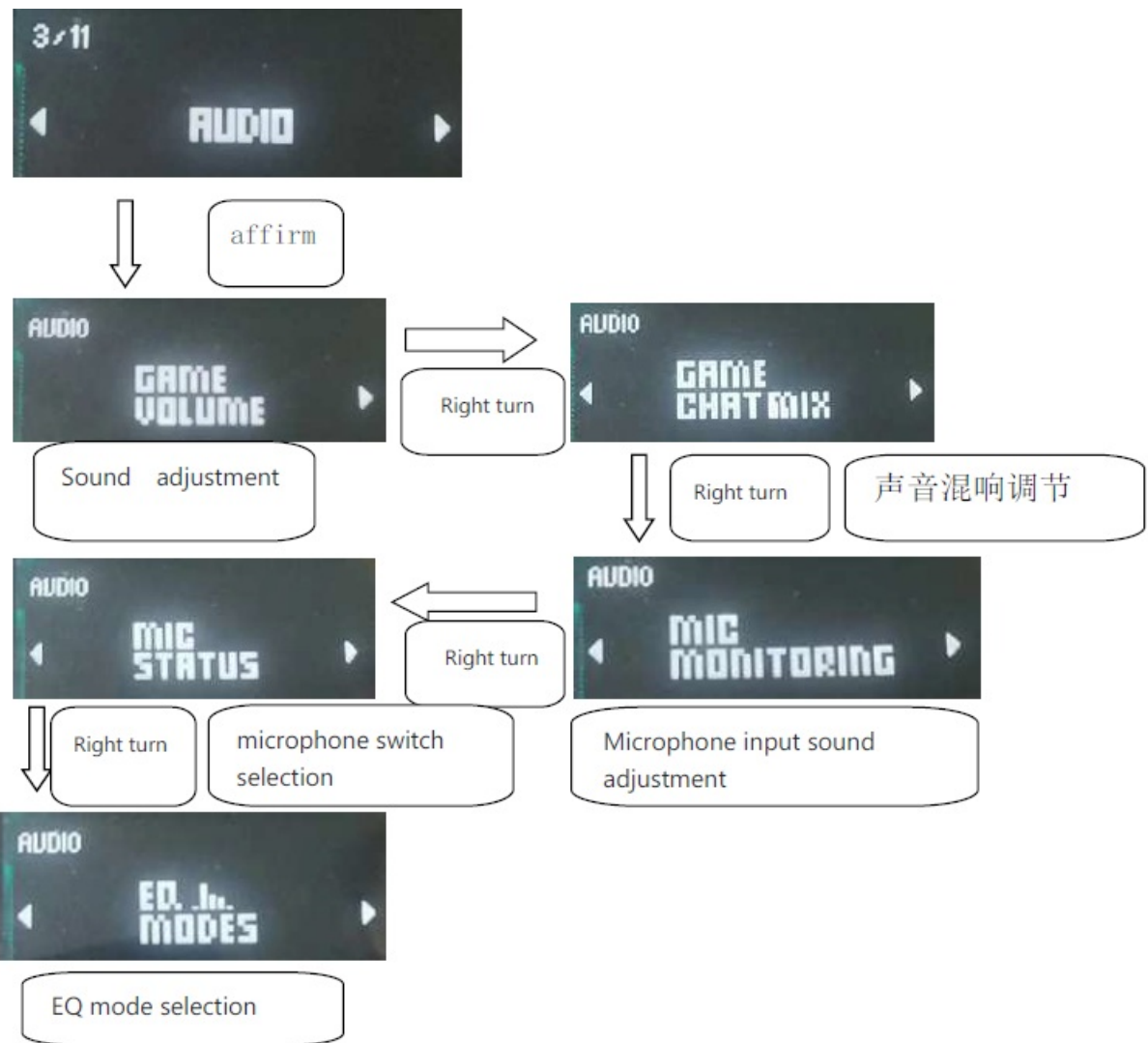


**Turn the encoder to display right**  
Platform choice



- **STANDARD:** choice XYZ axis mode is standard.
- **PRECISION:** choice XYZ axis mode is standard.
- **FRST:** choice XYZ axis mode is fash.

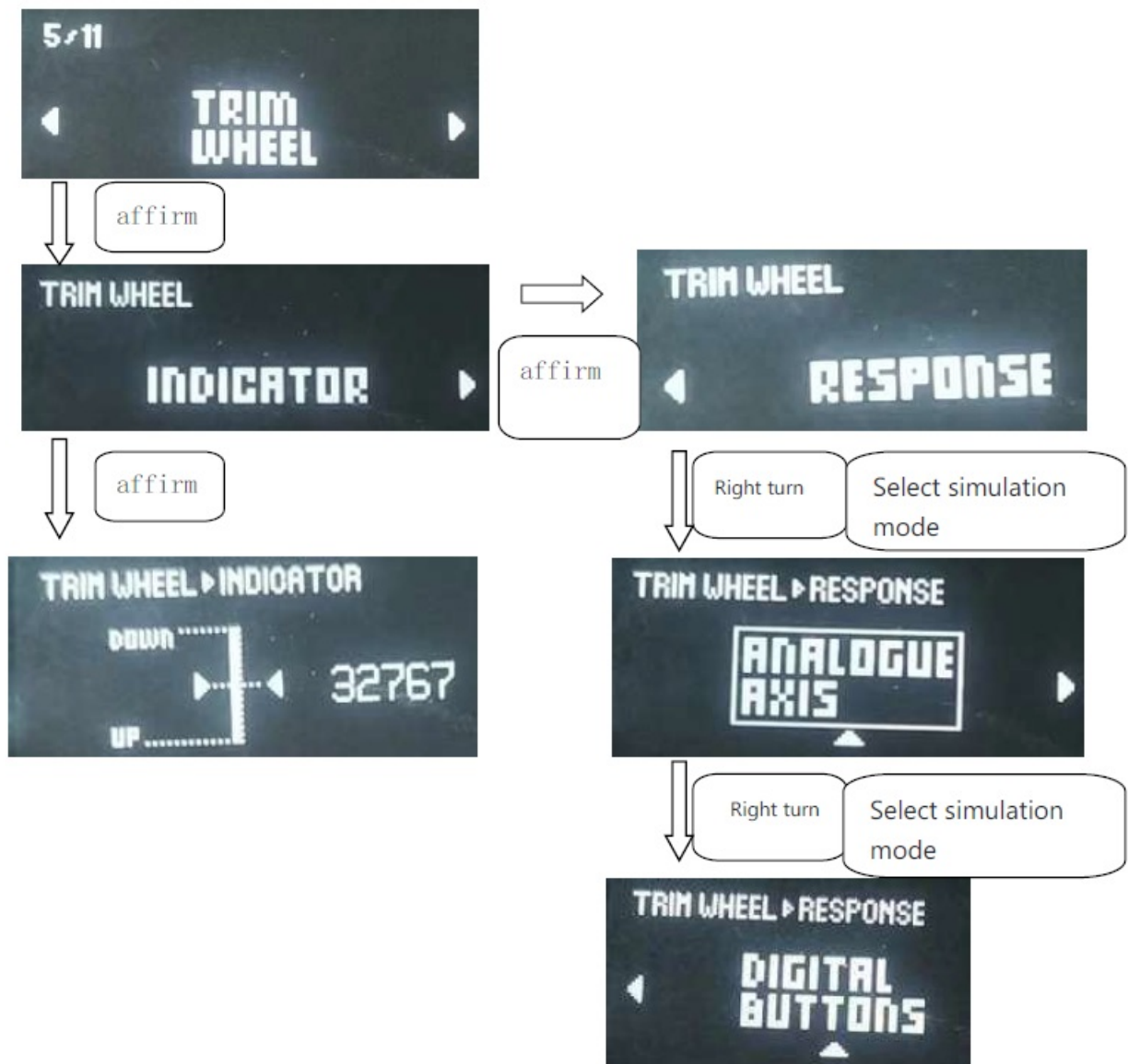
**Sound and microphone Settings**



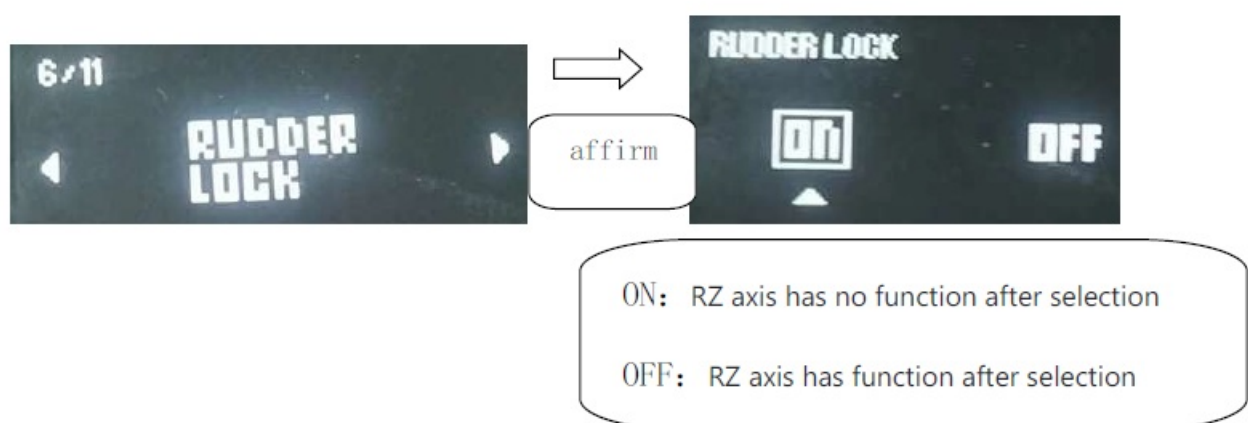
### Motor vibration strength regulation



### Grip on encoder test and mode selection

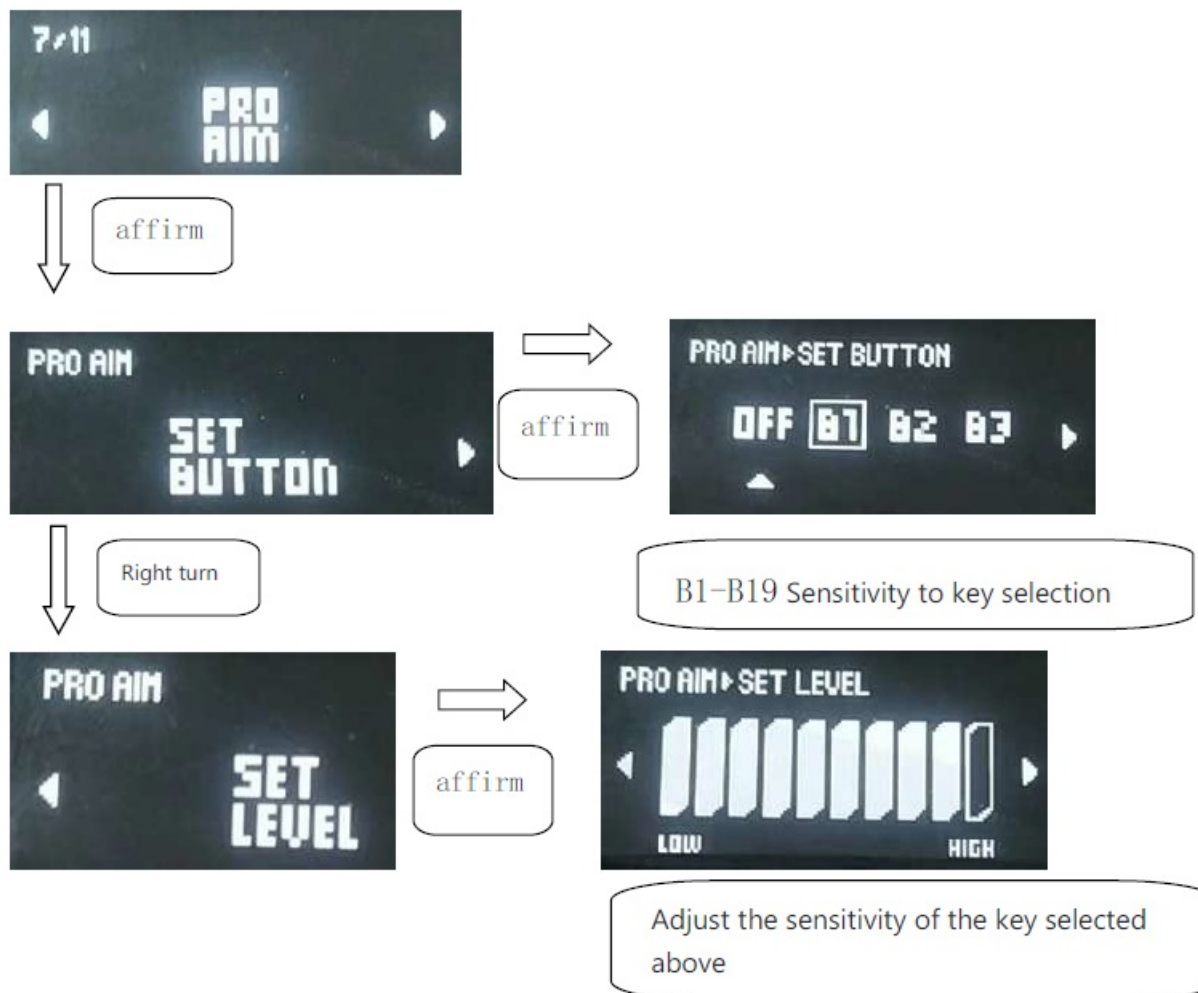


#### RZ Axis on or off



#### Sensitivity Settings for keys and shafts





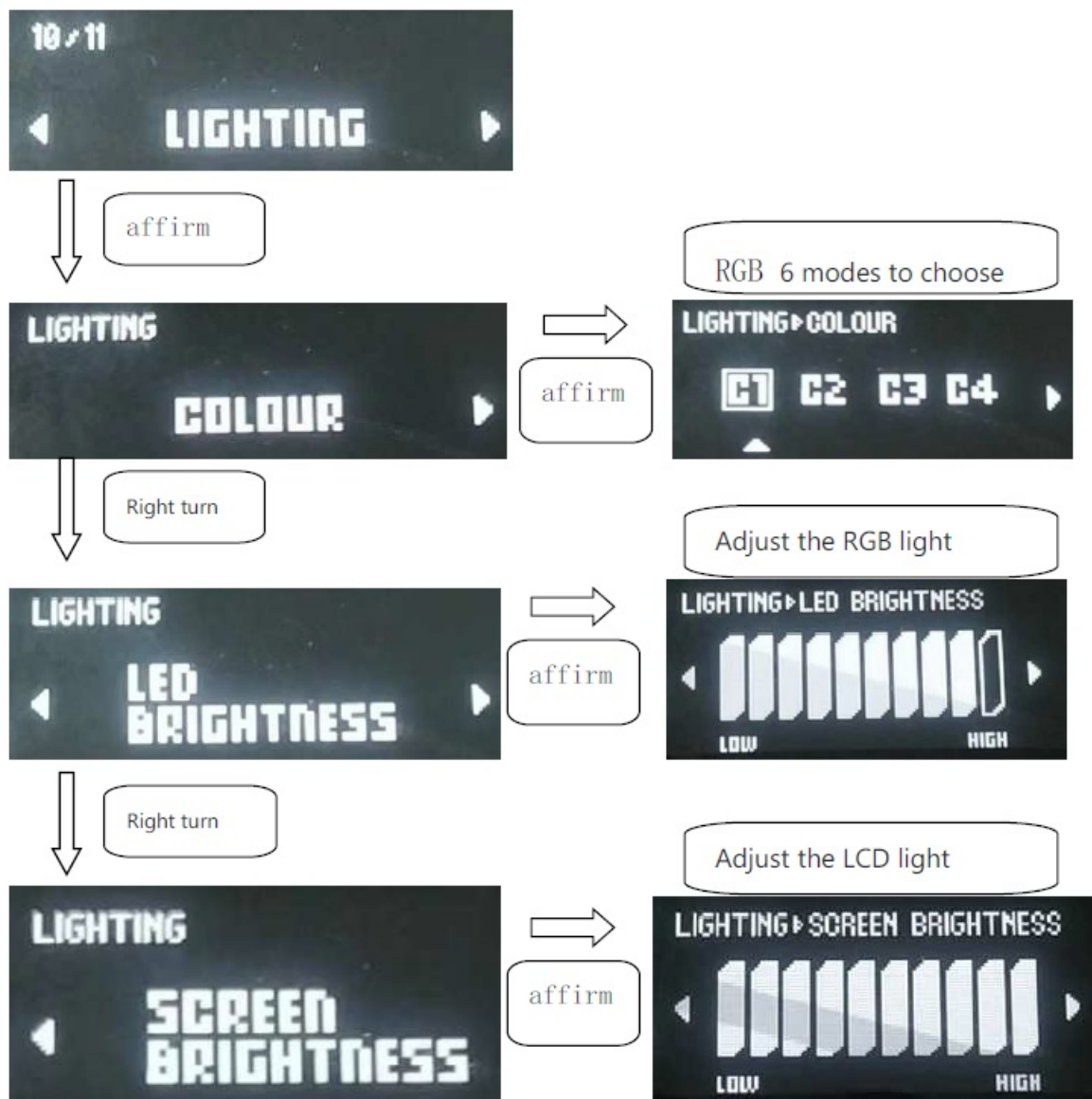
Switch the left and right keys



Touch panel sensitivity adjustment

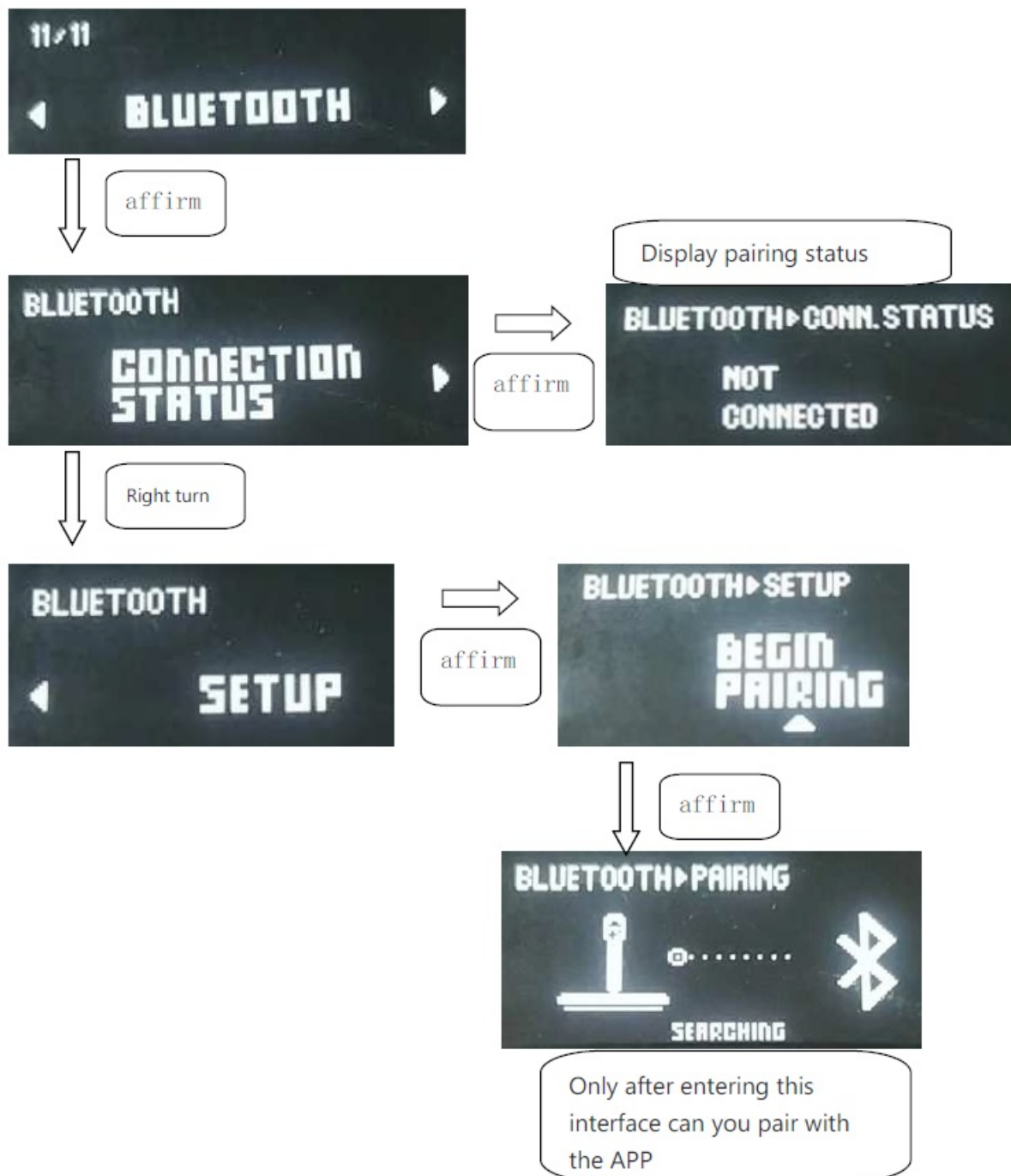


RGB lights set



Bluetooth connection





### PC/XBOX mode switch method.

- Open the XBOX host, and connect the USB cable to the joystick
- Look at the state of the OLED on the stick. If it is in XBOX state, you can test it directly on the XONE platform



- If the OLED is displayed in PC state as shown below, you need to switch to XBOX mode to use it



- Rotate the wheel clockwise or counterclockwise to move to the OLED menu



- Turn the ring pawl wheel clockwise and the following picture will appear



- Press the confirm button on the right and the following will appear in the PC status screen. Rotate the ring wheel clockwise to switch to XBOX
- Press the confirm button on the right again, and there is a box surrounding XBOX indicating that the mode is selected. Then press the return button on the left again to return to the following screen, and the test can be carried out on the XBOX host. When switching to the XBOX state, the joystick will actively rest the screen and turn off the light and restart once



- You can press the XBOX LOGO button to actively wake up the XBOX console



- In the same way, you can switch from the XBOX state to the PC state to test in the PC state



- Bluetooth application: After power-on, switch to the Bluetooth mode by rotating the ring wheel, and open the APP on the mobile phone, connect through Bluetooth, and operate on the APP, which can map the functions of each key. (For details, see 4.2.11 Bluetooth Connection.)

## Notes

- Avoid strong vibration, do not disassemble, refit, repair
- Avoid storage in damp, high temperature, lampblack and other places
- Avoid water or other liquids entering the steering wheel, which may affect the steering wheel function
- If you have any quality problems or suggestions, please contact the seller or after-sales personnel

## Attention:

Type-c output port is only used for data transmission, not for output on-load

## RECYCLING

This product bears the selective sorting symbol for Waste electrical and electronic equipment (WEEE). This means that this product must be handled pursuant to European directive 2012/19/EU in order to be recycled or dismantled to minimize its impact on the environment. User has the choice to give his product to a competent recycling organization or to the retailer when he buys a new electrical or electronic equipment

## Federal Communication Commission Interference Statement

This device complies with Part 15 of the FCC Rules. Operation is subject to the following two conditions: (1) This device may not cause harmful interference, and (2) this device must accept any interference received, including interference that may cause undesired operation.

This equipment has been tested and found to comply with the limits for a Class B digital device, pursuant to Part 15 of the FCC Rules. These limits are designed to provide reasonable protection against harmful interference in a residential installation. This equipment generates, uses and can radiate radio frequency energy and, if not

installed and used in accordance with the instructions, may cause harmful interference to radio communications. However, there is no guarantee that interference will not occur in a particular installation. If this equipment does cause harmful interference to radio or television reception, which can be determined by turning the equipment off and on, the user is encouraged to try to correct the interference by one of the following measures:

- Reorient or relocate the receiving antenna.
- Increase the separation between the equipment and the receiver.
- Connect the equipment to an outlet on a circuit different from that to which the receiver is connected.
- Consult the dealer or an experienced radio/TV technician for help

**FCC Caution:**

- Any changes or modifications not expressly approved by the party responsible for compliance could void the user's authority to operate this equipment.
- This transmitter must not be co-located or operating in conjunction with any other antenna or transmitter.

**Radiation Exposure Statement:**

The product is a low-power device and its output power is lower than the FCC SAR exemption level.

**IMPORTANT NOTE:** In the event that this condition cannot be met (for example certain laptop configurations or co-location with another transmitter), then the FCC authorization is no longer considered valid and the FCC ID cannot be used on the final product. In these circumstances, the OEM integrator will be responsible for re-evaluating the end product (including the transmitter) and obtaining a separate FCC authorization

**End Product Labeling**

The final end product must be labeled in a visible area with the following: "Contains FCC ID: XGB-VOSTICK". The grantee's FCC ID can be used only when all FCC compliance requirements are met.

**Manual Information To the End User**

The OEM integrator has to be aware not to provide information to the end user regarding how to install or remove this RF module in the user's manual of the end product which integrates this module. The end user manual shall include all required regulatory information/warnings as show in this manual.

**Industry Canada statement**

1. This device complies with Industry Canada license-exempt RSS standard(s). Operation is subject to the following two conditions:
  1. This device may not cause interference, and
  2. This device must accept any interference, including interference that may cause undesired operation of the device.
2. This Class B digital apparatus complies with Canadian ICES-003.
3. This device and its antenna(s) must not be co-located or operating in conjunction with any other antenna or transmitter, except tested built-in radios.
4. The County Code Selection feature is disabled for products marketed in the US/ Canada

**Attention**

To avoid the risk of fire, please just connect the product to a power supply of which the output capability is less than 15W

Portable device:

- Radiation Exposure Statement: The product complies with the Canada portable RF exposure limit set forth for an uncontrolled environment and are safe for intended operation as described in this manual.
- Further RF exposure reduction can be achieved if the product can be kept as far as possible from the user body or set the device to lower output power if such function is available.

Documents / Resources



**[TURTLE BEACH VelocityOne Flightstick](#) [pdf] User Manual**  
XGB-VOSTICK, XGBVOSTICK, VelocityOne Flightstick, VelocityOne, Flightstick