




TURTLE BEACH TBS-0710-05-QSG-D OL Stealth Ultra Controller User Manual

[Home](#) » [TURTLE BEACH](#) » TURTLE BEACH TBS-0710-05-QSG-D OL Stealth Ultra Controller User Manual 

Contents

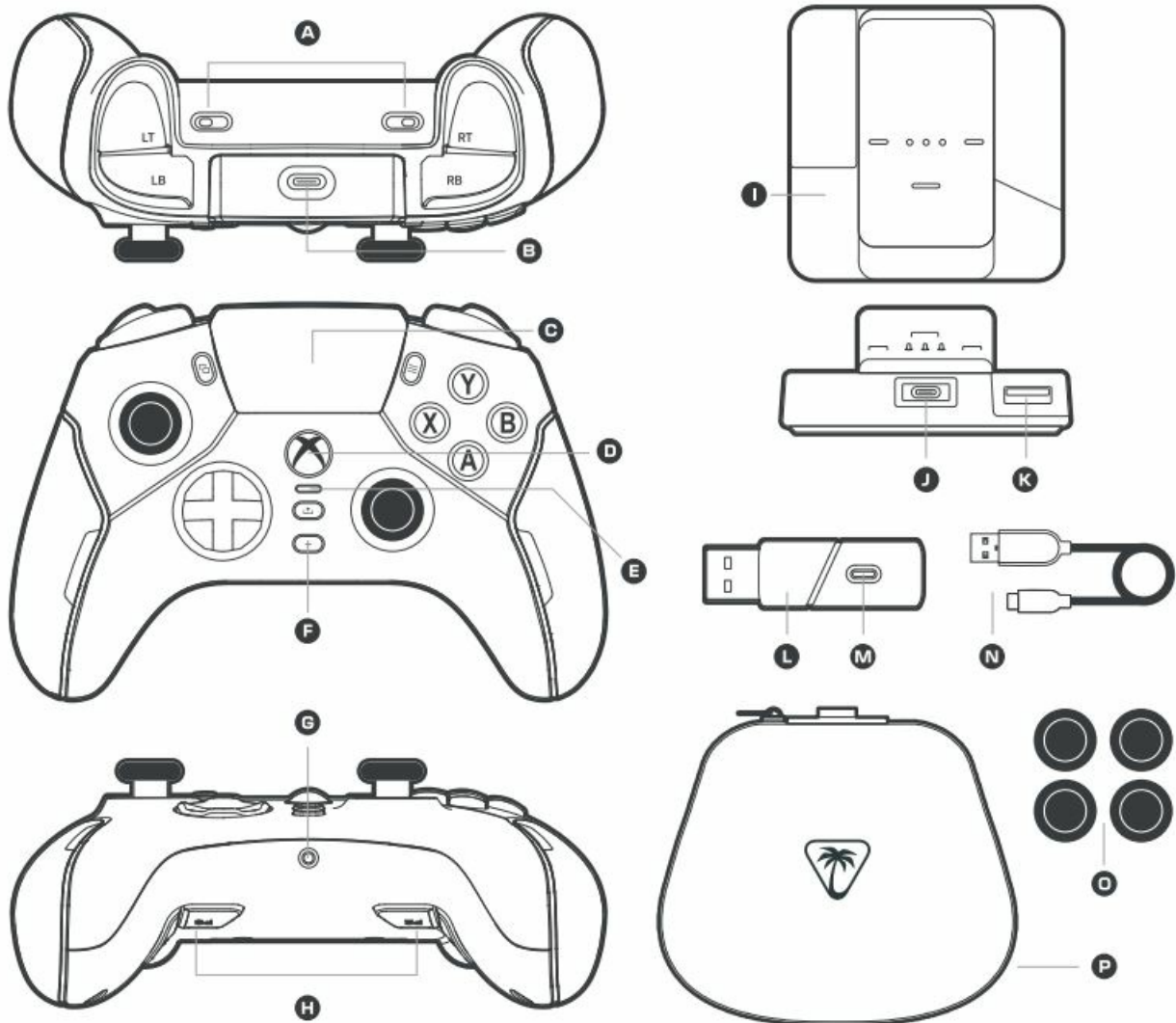
- [1 TURTLE BEACH TBS-0710-05-QSG-D OL Stealth Ultra Controller](#)
- [2 CONTENTS & PRODUCT TOUR](#)
- [3 SETUP FOR XBOX](#)
- [4 SETUP FOR PC](#)
- [5 COMMAND DISPLAY MAIN MENU](#)
- [6 COMMAND DISPLAY DASHBOARD](#)
- [7 CHARGING](#)
- [8 FCC Statement](#)
- [9 Documents / Resources](#)
 - [9.1 References](#)
- [10 Related Posts](#)



TURTLE BEACH TBS-0710-05-QSG-D OL Stealth Ultra Controller



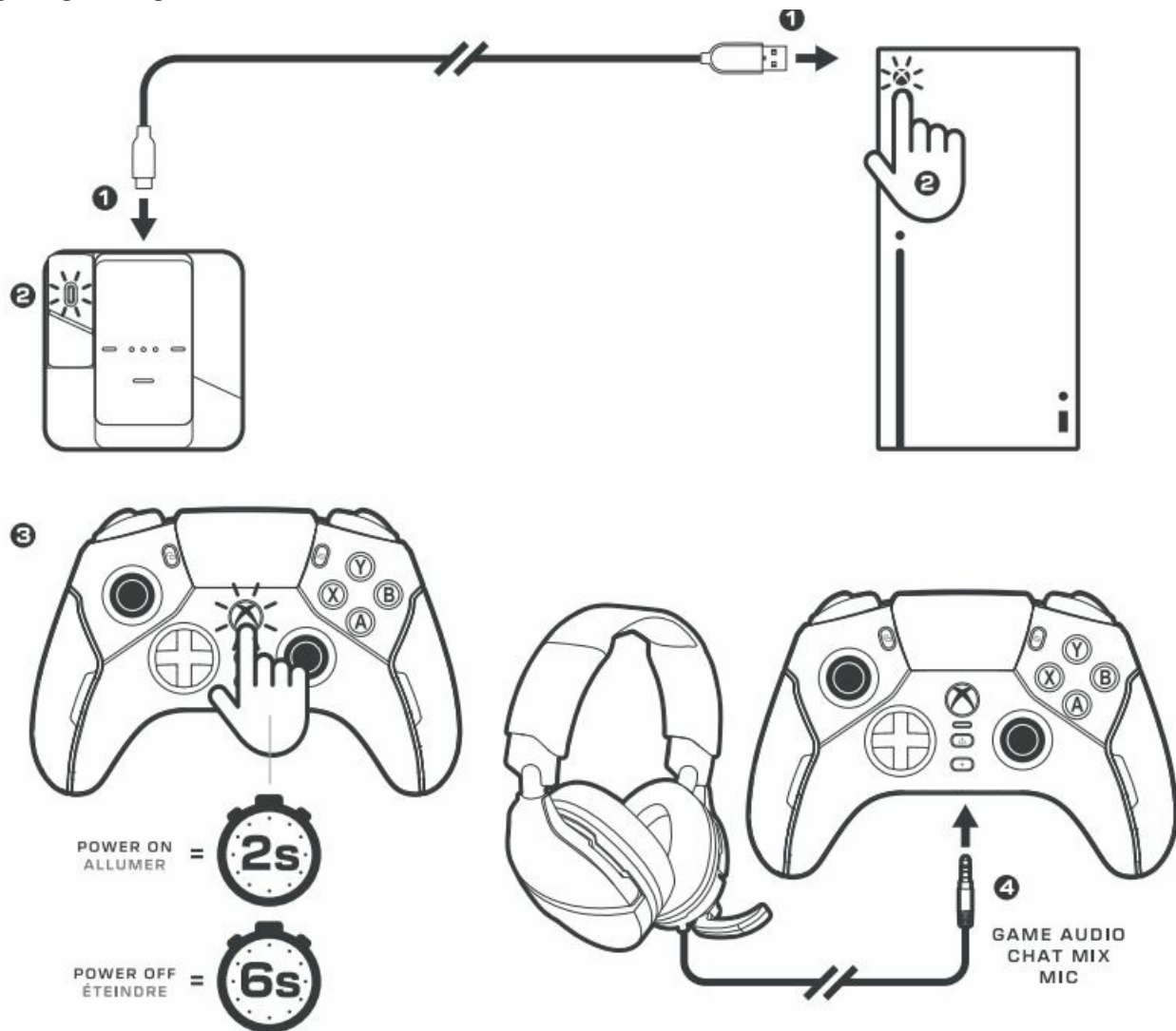
CONTENTS & PRODUCT TOUR



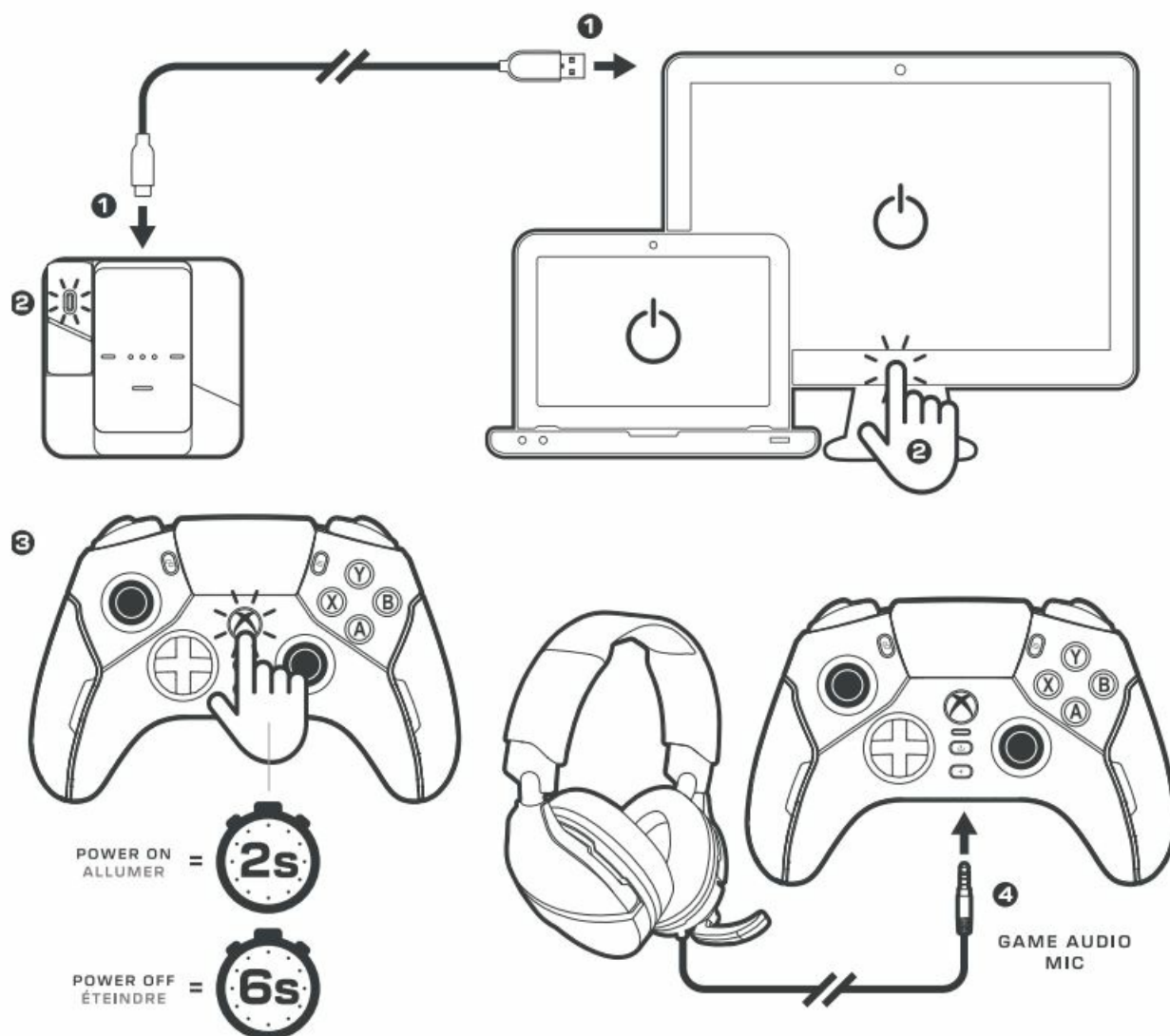
- A Adjustable trigger locks
- B USB cable port
- C Command display

- D Guide button Press (2s) = power on/off
- E Connection LED
- F Input focus button
- G Headset port
- H Mappable action buttons
- I Rapid charge dock
- J USB-C cable port
- K Transmitter USB port
- L Wireless transmitter
- M Transmitter connection LED and pairing button
- N 3m USB-C to USB-A cable
- O 4x Thumbstick grip caps
- P Carry case

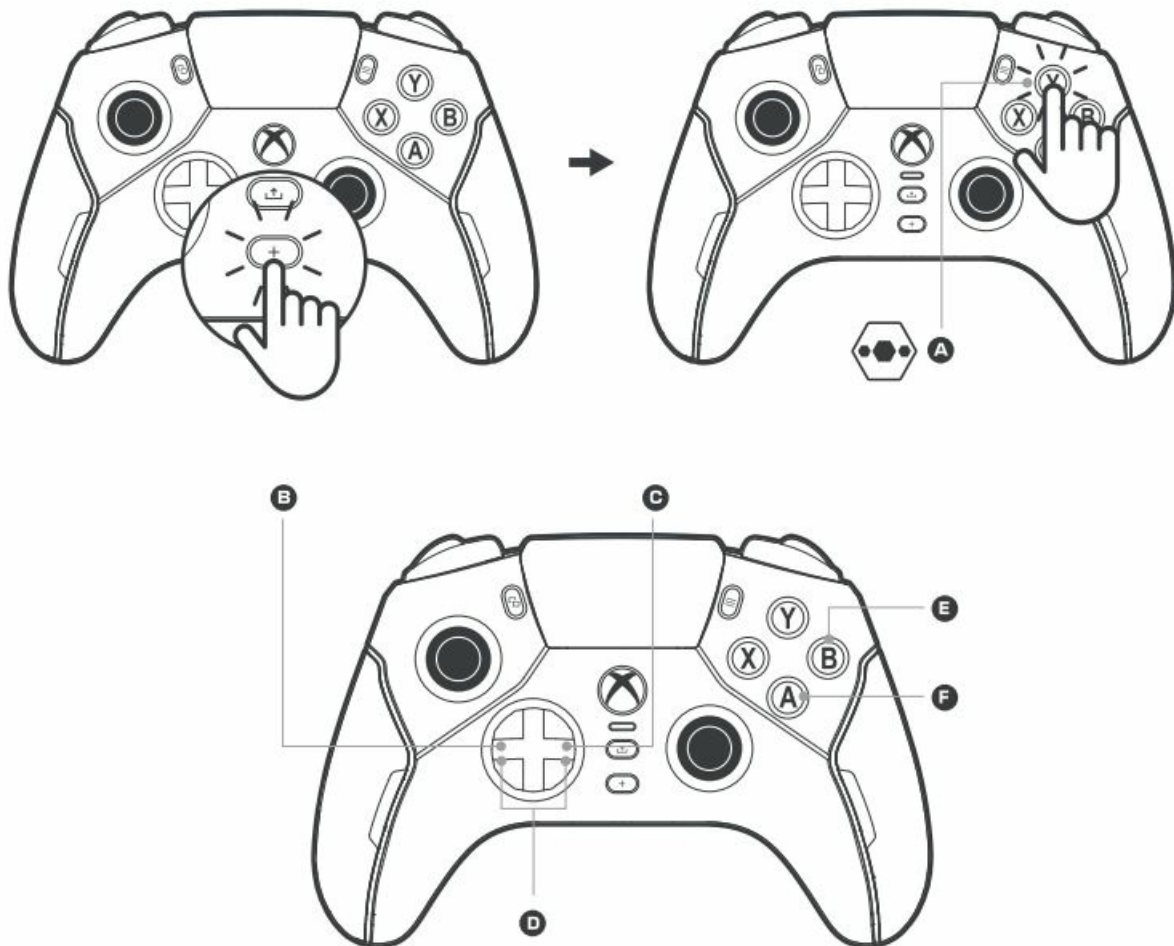
SETUP FOR XBOX



SETUP FOR PC



COMMAND DISPLAY MAIN MENU

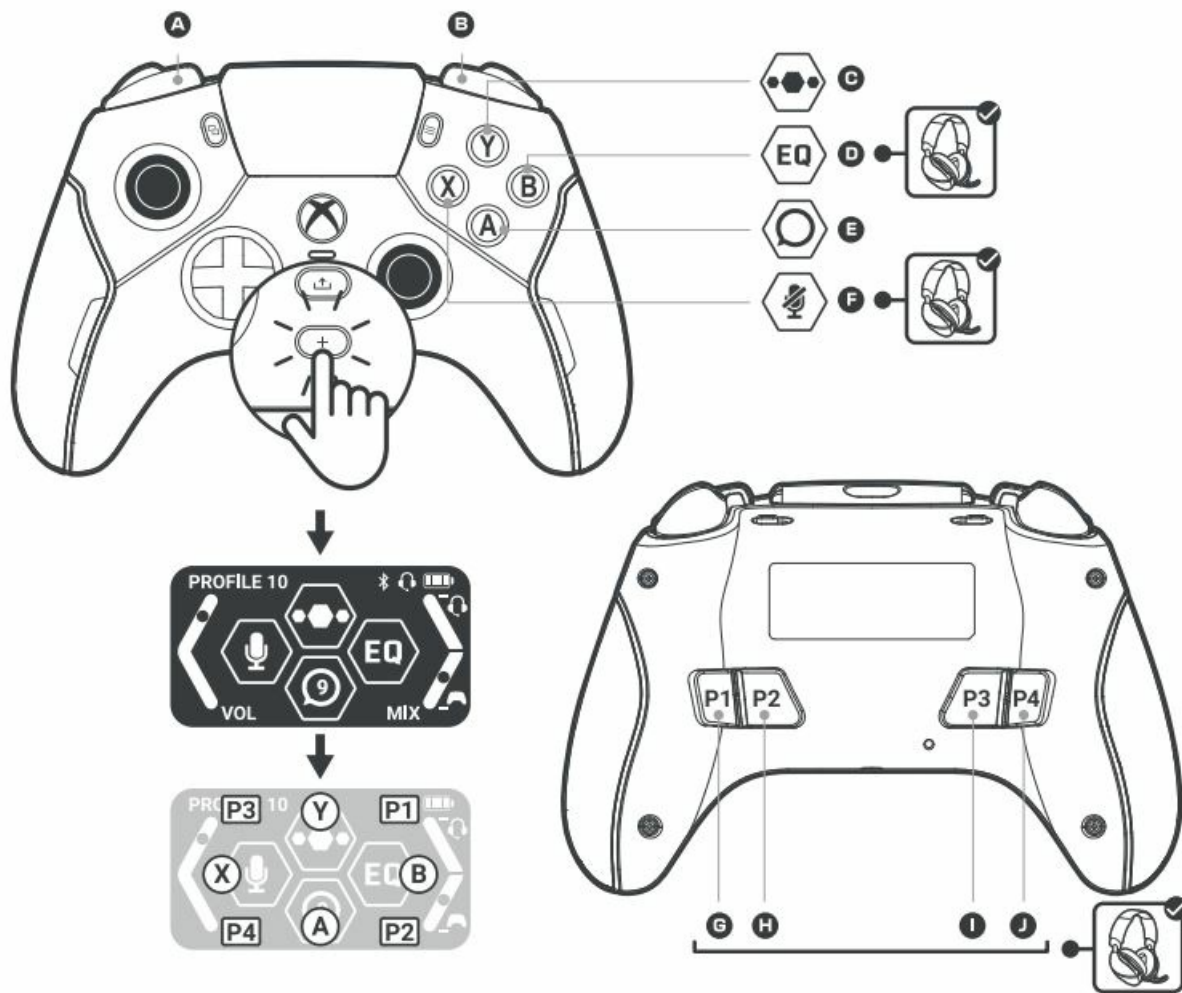


Make in-depth adjustments via the Main Menu.

1. Switch focus to the COMMAND DISPLAY then press Y to access the main menu.
2. Press + to return focus to the game

- A Open main menu
- B Previous menu item
- C Next menu item
- D Adjust feature
- E Back/cancel
- F Select/accept

COMMAND DISPLAY DASHBOARD

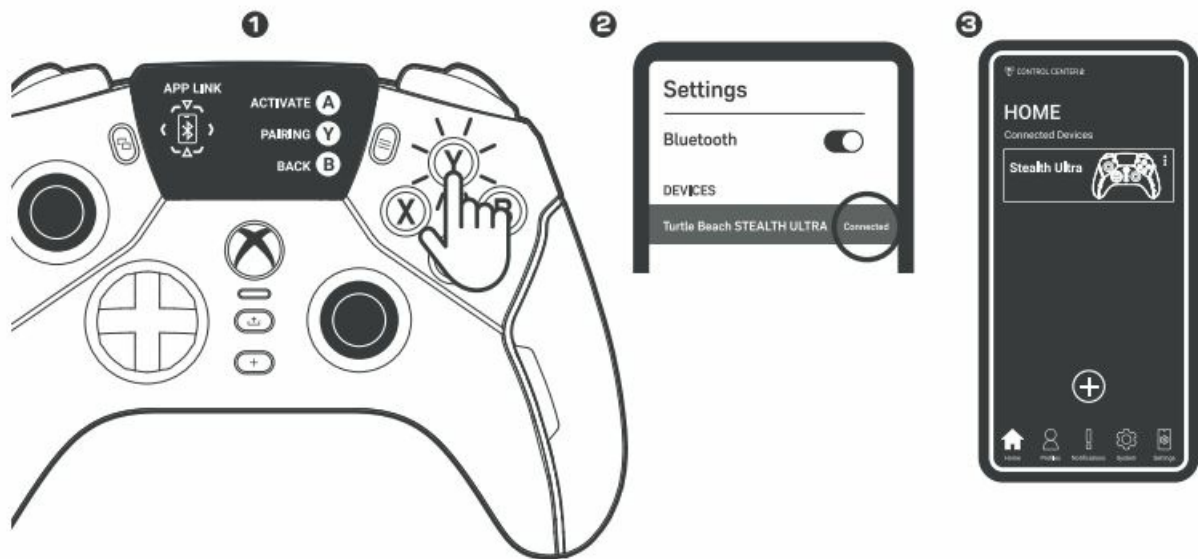
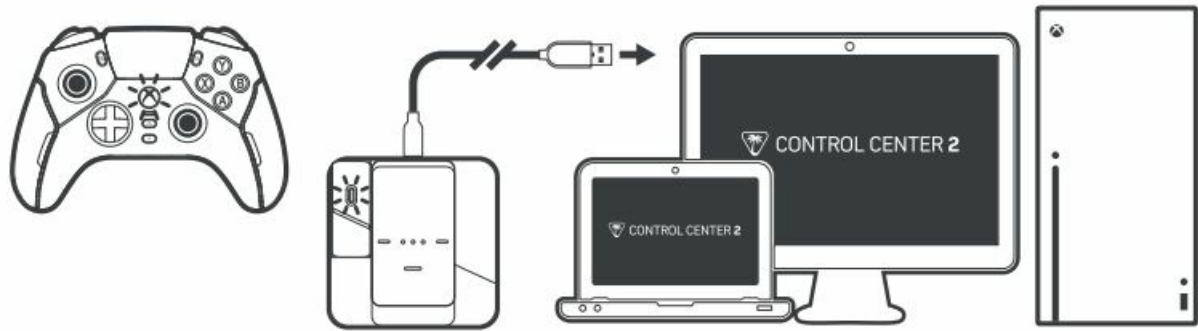


Make quick adjustments via the DASHBOARD.

1. Press + to switch focus to the **COMMAND DISPLAY**.
2. Press + to return focus to the game.

- A Profile –
- B Profile +
- C Open main menu C Chat mix –
- D EQ cycle
- E Social feed
- F Mic mute
- G Chat mix +
- I Volume +
- J Volume –

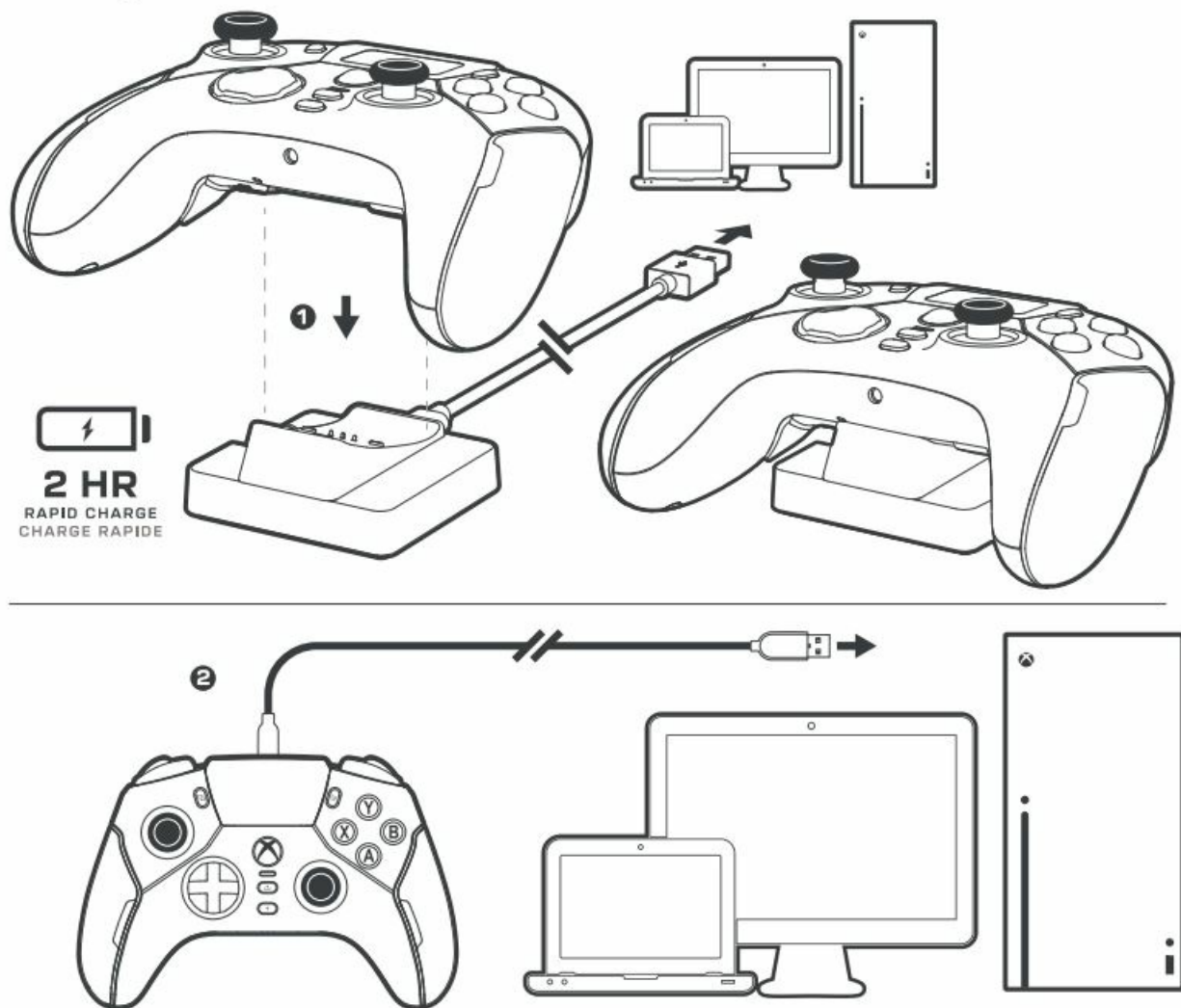
CONTROL CENTER 2.0



Search for Stealth Ultra and Control Center 2.0 app on Microsoft Store, Play Store and App Store. Keep your controller up to date and customize performance settings on Xbox and Windows. Tune on board memory profiles and configure social notifications on Android and iOS.

1. Initiate APP LINK pairing from the COMMAND DISPLAY main menu.
2. Pair to your mobile smart device.
3. Launch the Control Center 2.0 app.

CHARGING



When the battery level is low, controller LEDs will flash red.

- Use the dock to charge the controller. Controller LEDs will turn green when it is fully charged.
- Or use the USB cable to Play & Charge. In this mode, STEALTH ULTRA will function as a wired device.

FCC Statement

Regulatory Compliance Statements for the Stealth Ultra

Local Restrictions on Radio Usage

Caution: Due to the fact that the frequencies used by wireless devices may not yet be harmonized in all countries, these radio products are designed for use only in specific countries, and are not allowed to be operated in countries other than those of designated use. As a user of these products, you are responsible for ensuring that the products are used only in the countries for which they were intended and for verifying that they are configured with the correct selection of frequency and channel for the country of use. Any deviation from the permissible power and frequency settings to determine if you are allowed to use your Wireless device in a specific country, please check to see if the radio type number that is printed on the identification label of your device is listed in the manufacturer's OEM Regulatory Guidance document at the following URL

<http://www.turtlebeach.com/homologation> or contact Turtle Beach directly.

Federal Communications Commission (FCC) Compliance Notices

This section includes the following FCC statements for the Stealth Ultra:

- Non-Modification Statement
- Class B Interference Statement
- RF Radiation Exposure & Hazard Warning

FCC Caution

As transmitter must not be co-located or operating in conjunction with any other antenna or transmit the user's authority to operate this equipment.

Radiation Exposure Statement

The product is a low-power device and its output power is lower than the FCC SAR exemption level. considered valid and the eID chancie useit ion the tina product. In these li cuisines, the or integrator coil e ties possible ther travel the enth product through the transmitter) and obtaining a separate FCC authorization.

Federal Communication Commission Interference Statement

This device complies with Part 15 of the FCC Rules. Operation is subject to the following two conditions:

1. This device may not cause harmful interference, and
2. this device must accept any interference received, including interference that may cause undesired operation.

Note: This equipment has been tested and found to comply with the limits for a Class B digital device, pursuant to Part 15 of the FCC Rules. These limits are designed to provide reasonable protection against harmful interference in a residential installation. This equipment generates, uses and can radiate radio frequency energy and, if not installed and used in accordance with the instructions, may radio or television reception, which can be determined oy turning the equipment off and on, the user is encouraged to try to correct the interference gone of the fol caine measure interference to

- Reorient or relocate the receiving antenna.
- Increase the separation between the equipment and the receiver.
- Connect the equipment into an outlet on a circuit different from that to which the receiver is connected.
- Consult the dealer or an experienced radio/TV technician for help.

RF Radiation Exposure & Hazard Statements

This equipment complies with FCC radiation exposure limits set forth for an uncontrolled environment. End users must follow the specific operating instructions to satisfy RF exposure compliance. This transmitter must not co-located or operating in conjunction with any other antenna or transmitter.

RF warning for Portable device

The device has been evaluated to meet general RF exposure requirements. The device can be used in portable exposure conditions without restriction.

Non-Modification Statement

Use only the supplied Internal antenna. Unauthorized antennas, modifications, or attachments could damage the Stealth Ultra and violate FCC regulations. Any changes or modifications not expressivapproved by the party

responsible for compliance could void the user's authority to operate this equipment. Please contact Turtle Beach for a list of approved 2.4 GHz antennas

Innovation, Science and Economic Development Canada (ISED) Compliance Notices

This section includes the following ISED statements for Stealth Ultra:

- Class B Interference Statement
- RF Radiation Exposure & Hazard Warning

IC: 3879A-VOSTICK Industry Canada statement

This device complies with Industry Canada license-exempt RSS standard(s). Operation is subject to the following two conditions:

1. This device may not cause interference, and
2. This device must accept any interference, including interference that may cause undesired operation of the device.

This Class B digital apparatus complies with Canadian ICES-003.

This device and its antenna(s) must not be co-located or operating in conjunction with any other antenna or transmitter, except tested built-in radios.

RF Radiation Exposure & Hazard Statement

The product complies with Canada's portable RF exposure limits set forth for an uncontrolled environment and are safe for intended operation as described in this manual. The further RF exposure reduction can be achieved if the product can be kept as far as possible from the user body or set the device to lower output power if such function is available.

European Union and European Free Trade Association (EFTA) Regulatory Compliance

This equipment may be operated in the countries that comprise the member countries of the European Union and the European Free Trade Association. These countries, listed below, are referred to as The European Community throughout this document: AUSTRIA, BELGIUM, BULGARIA, CYPRUS, CZECH REPUBLIC, DENMARK, ESTONIA, FINLAND, FRANCE, GERMANY, GREECE, HUNGARY, IRELAND, ITALY, LATVIA, LITHUANIA, LUXEMBOURG, MALTA, NETHERLANDS, POLAND, PORTUGAL, ROMANIA, SLOVAKIA, SLOVENIA, SPAIN, SWEDEN, UNITED KINGDOM, ICELAND, LICHTEINSTEIN, NORWAY, SWITZERLAND.

Declaration of Conformity

Marking by this symbol: **CE**

declares that this product is in compliance with the essential requirements and other relevant provisions of Directive 2014/53/EU.

UKCA Conformity

- **Radiating request range:** 2402-2450.1027/1206)
- **Max power:** 0.99dBm

This equipment meets the following conformance standards:

FCC PART15B

FCC47 CFR Part 15:2019TPCH(2021-2)
10 C.F.R. section 430.23(aa); Appendix Y to Subpart B of Part
ENERGY STAR Draft Test Method for Computers, Rev.
October 2019, California Code of Regulations, Title 20, Division 2, Chapter
CPSIA/H.R. 4040 Sec.108, CPSIA/H.R. 4040 Sec. 101
EN 55032, EN55035
EN71-1,EN71-2,EN71-3
EN300328, 301489, 62479EN62368
REACH Regulation (EC) No 1907/2006 SVHC 235

Total Cadmium Content (Entry 23 of REACH Annex XVII)

IEC 62321-7-2:2017,
TEC 62321-8:2017,
IEC 62321-4:2013+A1:2017,
TEC62321-6:2015,
IEC62321-5:2013,

94/62/EC Toxic Elements in Packaging

Polycyclic Aromatic Hydrocarbons (PAHs) (Entry 50 of REACH ANNEX XVII)
BPA (toy<3 or intended for place in the mouth)
IC RSS-247 Issue 2 Feb.2017
Canada IC test for toy with IC (ICES-003)
NRCAN, Appendix Z to Subpart B of Part 430
AS/NZS CISPR 32:2015+A1:2020
BS EN IEC62368-1:2012+A11:2020
USB 2.0 Full Speed Test

Bluetooth Certification

Please visit the following URL for a complete copy of the Declaration of Conformity:

<http://www.turtlebeach.com/homologation> This symbol on the product or its packaging indicates that this product must not be disposed of with your other household waste. Instead, it is your responsibility to dispose of your waste equipment by handing it over to a designated collection point for the recycling of waste electrical and electronic equipment. The separate collection and recycling of your waste equipment at the time of disposal will help conserve natural resources and ensure that it is recycled in a manner that protects human health and the environment. For more information about where you can drop off your waste for recycling, please contact your local authority, or where you purchased your product. registered wie Comply Dis and enlis Recycling Room. Here you will in advice and information about Was management, recycling see and the waste hierarchy principles orre are. <https://www.complydirect.com/the-recycling-room/>

Attention



Type-C output port is only used for data transmission, not for output on-load.

Attention

To avoid risk of fire, please just connect the product to a power supply of which the output capability is less than 15W.

Portable device


Radiation Exposure Statement:

The product complies with the Canada portable RF exposure limit set forth for an uncontrolled environment and are safe for intended operation as described in this manual. Further RF exposure reduction can be achieved if the product can be kept as far as possible from the user body or set the device to lower output power if such a function is available.

- Points de collecte sur www.quefairedemesdechets.fr



Documents / Resources

 <p>TURTLE BEACH</p> <p>Any questions? For support visit www.turtlebeach.com/support</p> <p>Please register your product to receive important updates. To register visit www.turtlebeach.com/register</p> <p>For warranty, visit: www.turtlebeach.com/warranty</p>	<p>TURTLE BEACH TBS-0710-05-QSG-D OL Stealth Ultra Controller [pdf] User Manual TBS-0710-05-QSG-D OL Stealth Ultra Controller, TBS-0710-05-QSG-D OL, Stealth Ultra Controller, Ultra Controller, Controller</p>
---	--

References

- [User Manual](#)