



# TURTLE BEACH Recon Cloud Controller User Guide

[Home](#) » [TURTLE BEACH](#) » TURTLE BEACH Recon Cloud Controller User Guide

## Contents [ [hide](#) ]

- [1 TURTLE BEACH Recon Cloud Controller](#)
- [2 COMPATIBILITY](#)
- [3 CONTENTS](#)
- [4 CONTROLS](#)
- [5 SETUP FOR BLUETOOTH](#)
- [6 SMARTPHONE CLIP](#)
- [7 SETUP FOR XBOX](#)
  - [7.1 CHARGING RECON CLOUD](#)
- [8 PRO-AIM FOCUS MODE](#)
- [9 Documents / Resources](#)
- [10 Related Posts](#)



## TURTLE BEACH Recon Cloud Controller



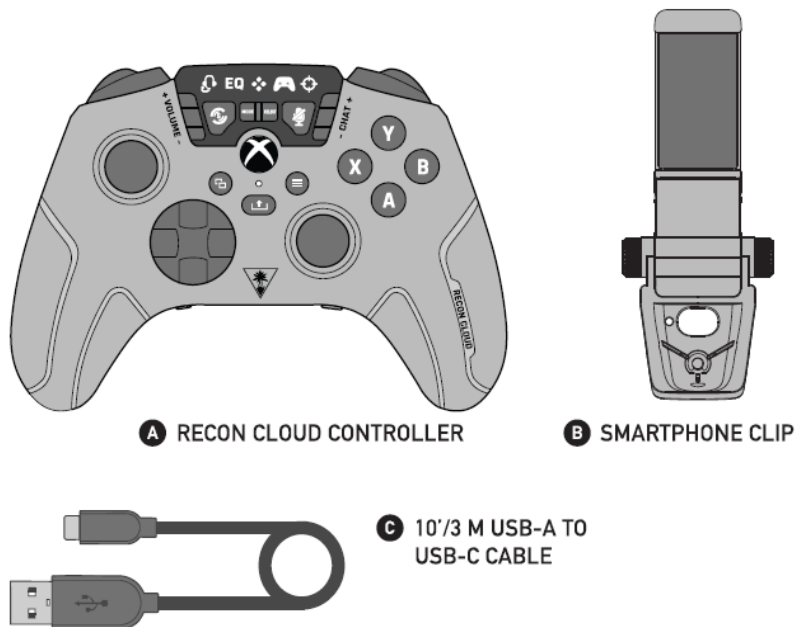
**IMPORTANT:** READ BEFORE USING  
ANY QUESTIONS? [TURTLEBEACH.COM/SUPPORT](https://turtlebeach.com/support)

## COMPATIBILITY

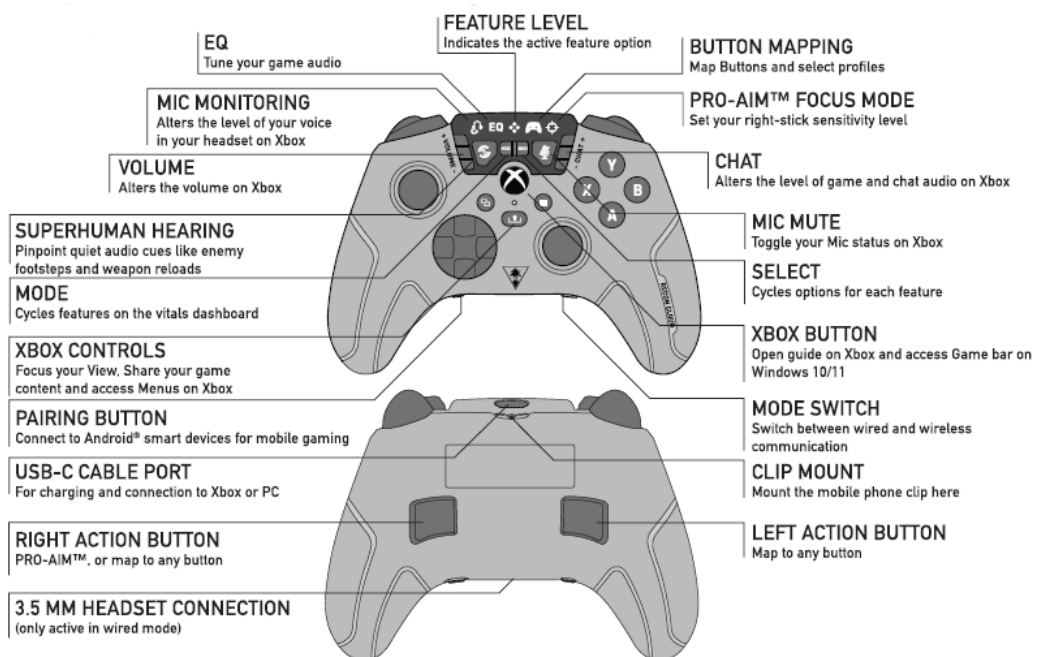
	WIRELESS   SANS FIL	WIRED   FILAIRE
Connectivity	Bluetooth® Low Energy*	10' / 3m USB Cable Cable USB de 3 m
Platforms	Android, Windows*	Xbox, Windows
Rear Buttons	✓	✓
<b>Pro-Aim</b> ™	✓	✓
Audio Features Caracteristiques Audio	✗	✓
Vibration Feedback Retour Haptique	✗	✓

Device must support Bluetooth 4.2 or later.

## CONTENTS

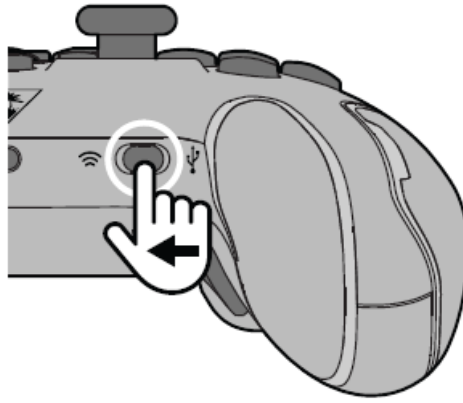


## CONTROLS

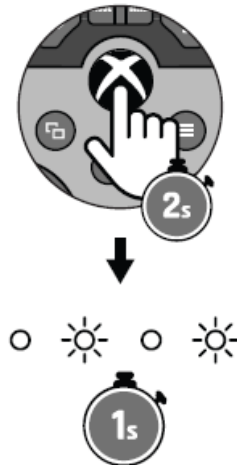


## SETUP FOR BLUETOOTH

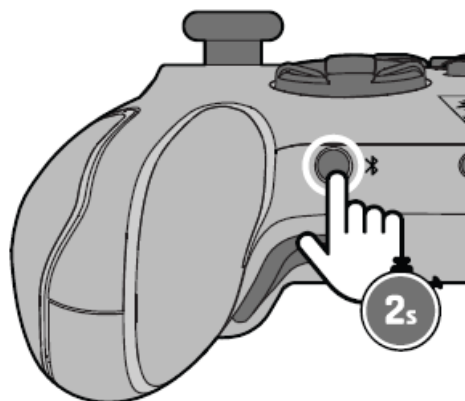
### 1. SLIDE MODE SWITCH



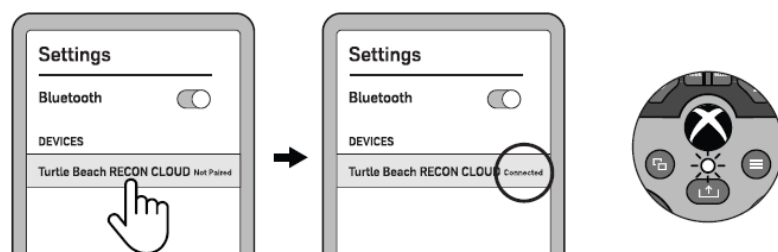
2. PRESS GUIDE BUTTON



3. PRESS PAIRING BUTTON



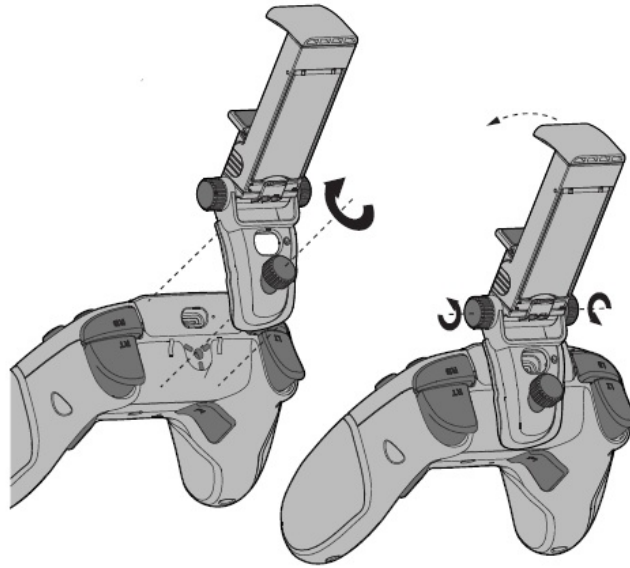
4. ENABLE BLUETOOTH AND TAP THE DEVICE ENTRY TO PAIR



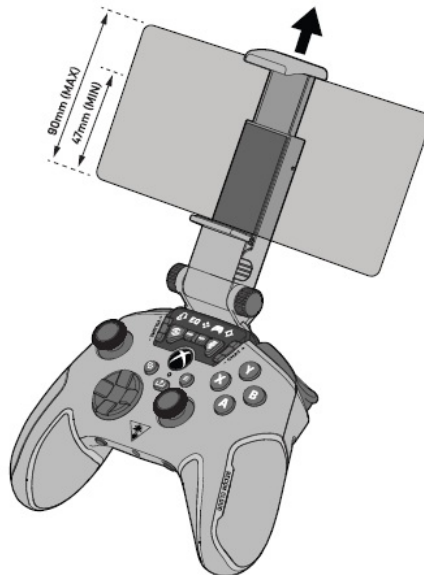
WHEN THE CONTROLLER IS CONNECTED wirelessly TO A MOBILE DEVICE. PRO-AIM AND ACTION BUTTON PROFILES ARE AVAILABLE.

## SMARTPHONE CLIP

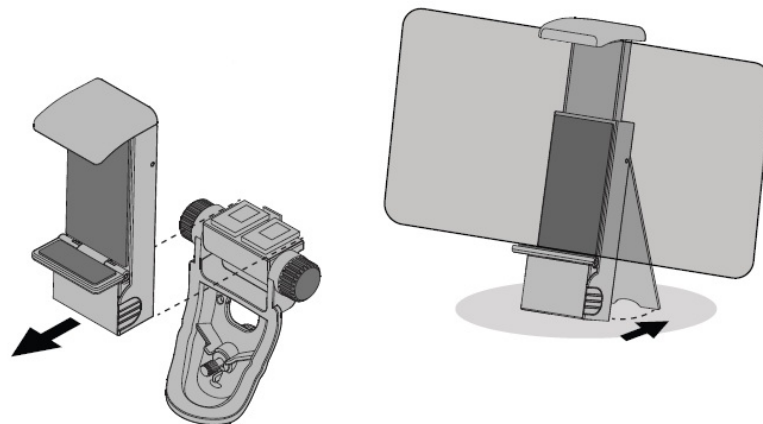
1. SECURELY ATTACH THE CLIP TO THE CONTROLLER AND ADJUST THE ANGLE



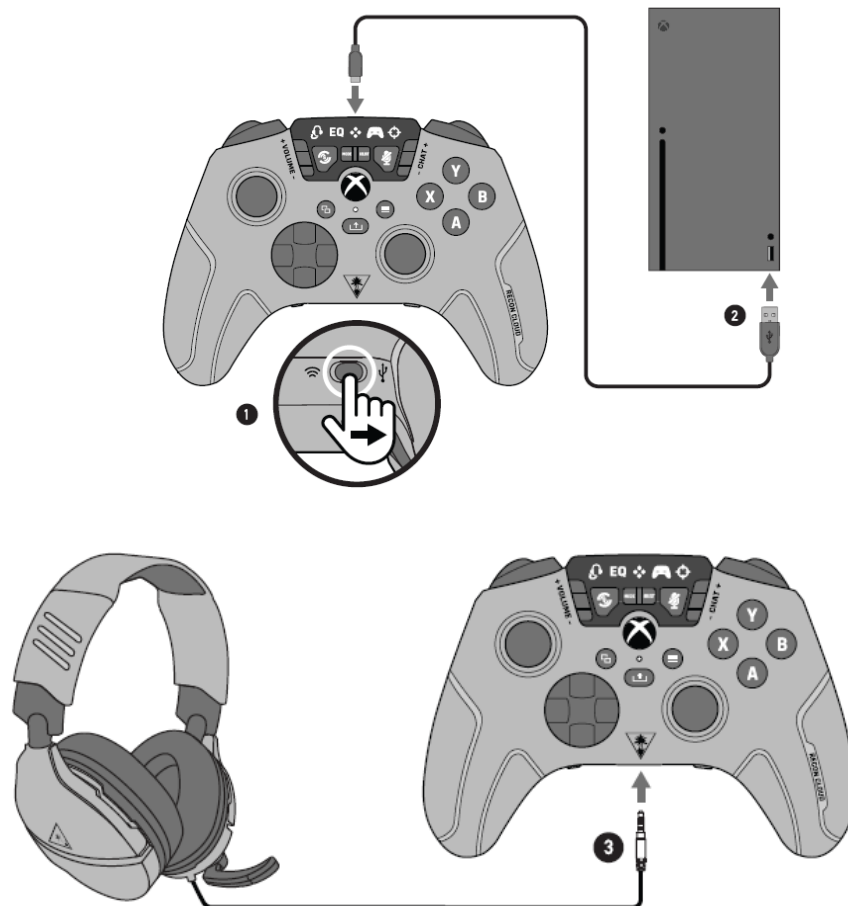
## 2. ATTACH YOUR PAIRED SMARTPHONE



THE CLIP CAN ALSO BE DETACHED AND USED AS A TABLETOP SMARTPHONE STAND

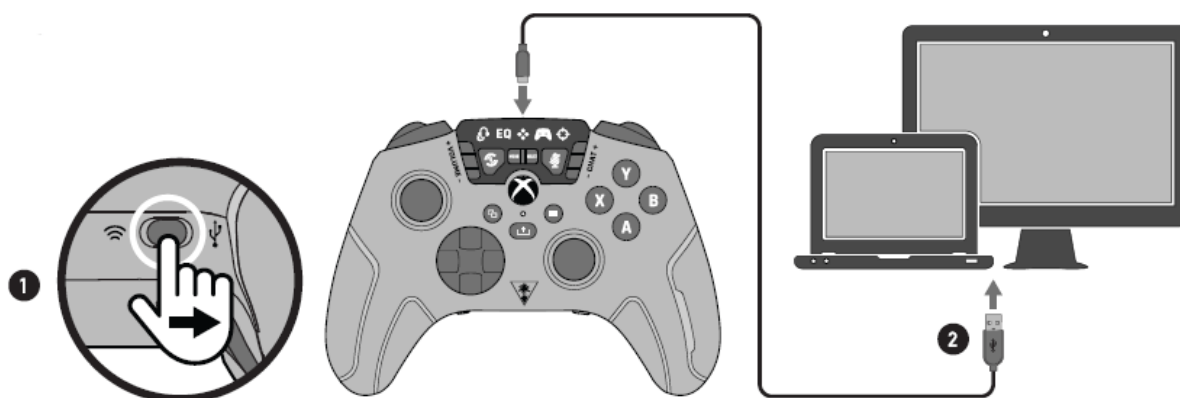


## SETUP FOR XBOX



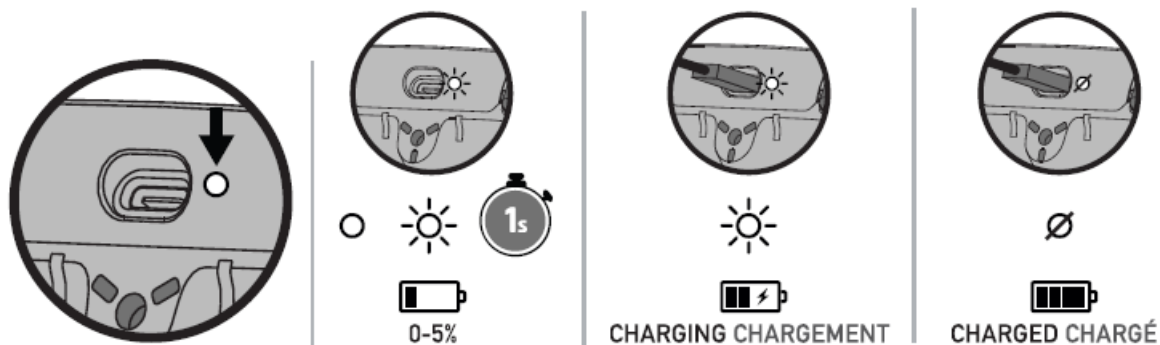
WHEN 3.5 MM HEADSET IS CONNECTED. VOLUME. CHAT. MIC MONITORING AND MIC MUTE ALTER THE SETTINGS SLIDERS ON XBOX.

## SETUP FOR PC



ALL WIRED AUDIO FEATURES WILL WORK ON PC EXCEPT FOR CHAT MIX WHEN 3.5MM HEADSET IS CONNECTED.

## CHARGING RECON CLOUD



CHARGE THE CONTROLLER USING THE SUPPLIED USB-C CABLE. THE CONTROLLER CAN BE CHARGED IN BOTH WIRED AND WIRELESS MODES DURING USE.

## DASHBOARD STATUS

	OFF DÉSACTIVÉ				
	OFF* DÉSACTIVÉ*	LOW FAIBLE	MEDIUM MOYEN	HIGH ÉLEVÉ	MAX. MAX.
EQ	N/A	SIGNATURE SOUND* SON EMBLÉMATIQUE*	BASS BOOST AMPLIFICATION DES BASSES	BASS & TREBLE BOOST AMPLIFICATION DES AIGUS ET DES BASSES	VOCAL BOOST AMPLIFICATION DES VOIX
	N/A	PROFILE 1* PROFIL 1*	PROFILE 2 PROFIL 2	PROFILE 3 PROFIL 3	PROFILE 4 PROFIL 4
	OFF* DÉSACTIVÉ*	LOW FAIBLE	MEDIUM MOYEN	HIGH ÉLEVÉ	MAX. MAX.

PRESS MODE TO CYCLE THROUGH FEATURES



PRESS SELECT TO CYCLE THROUGH FEATURE OPTIONS

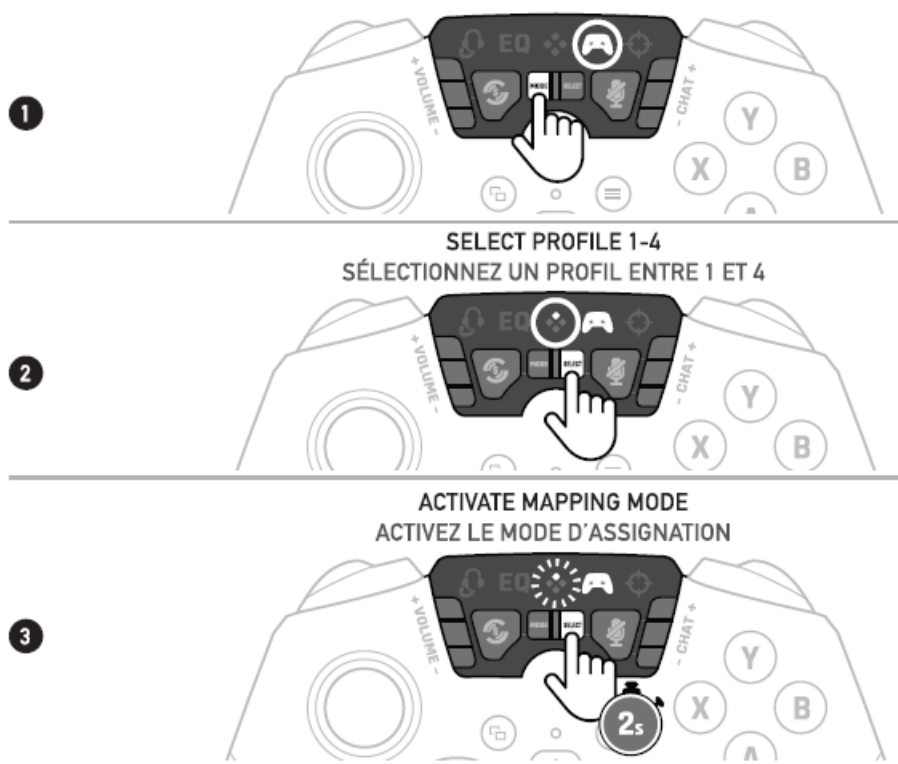


QUICK-ACTION BUTTON MAPPING





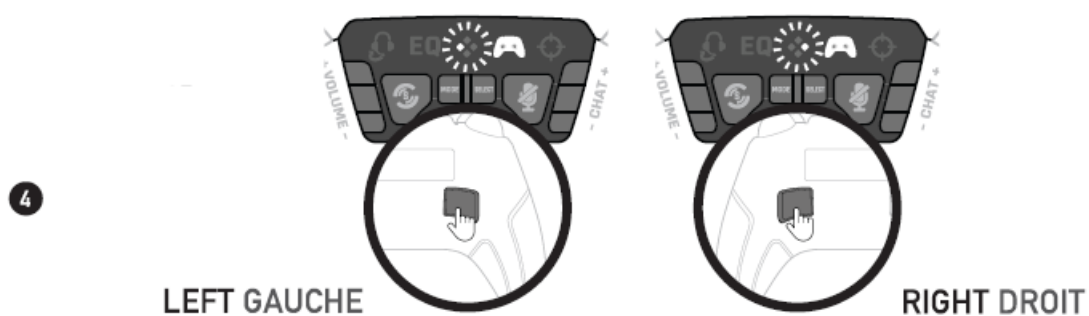
YOU CAN MAP ANY OF THE CONTROLLER BUTTONS TO THE LEFT AND RIGHT QUICK-ACTION BUTTONS



## QUICK-ACTION

### BUTTON MAPPING

SELECT THE QUICK-ACTION BUTTON TO CONFIGURE



## SELECT BUTTON TO ASSIGN

5



6



YOUR CONTROLLER IS NOW READY TO USE

NEW BUTTON MAPPINGS OVERRIDE OLD ONES. TO DELETE A BUTTON MAPPING, REPEAT THE PROCESS AND AT STEP 5, PRESS THE QUICK-ACTION BUTTON AGAIN.

## PRO-AIM FOCUS MODE



WHEN THE PRO-AIM™ BUTTON IS PRESSED AND HELD. THE SENSITIVITY OF THE RIGHT STICK WILL DECREASE TO THE SET LEVEL. THE HIGHER THE LEVEL. THE GREATER THE REDUCTION IN SENSITIVITY

## Documents / Resources



**[TURTLE BEACH Recon Cloud Controller](#)** [pdf] User Guide  
RECONCLOUD, XGB-RECONCLOUD, XGBRECONCLOUD, Recon Cloud Controller, Cloud C  
ontroller, Recon Controller, Controller