



# TURTLE BEACH 22dBFS Stealth Pro Wireless Headset User Manual

[Home](#) » [TURTLE BEACH](#) » TURTLE BEACH 22dBFS Stealth Pro Wireless Headset User Manual 

## Contents

- [1 TURTLE BEACH 22dBFS Stealth Pro Wireless Headset](#)
- [2 PRODUCT INFORMATION](#)
- [3 CONTROLS](#)
- [4 MICROPHONE MUTE](#)
- [5 LED BEHAVIORS](#)
- [6 Documents / Resources](#)
  - [6.1 References](#)
- [7 Related Posts](#)



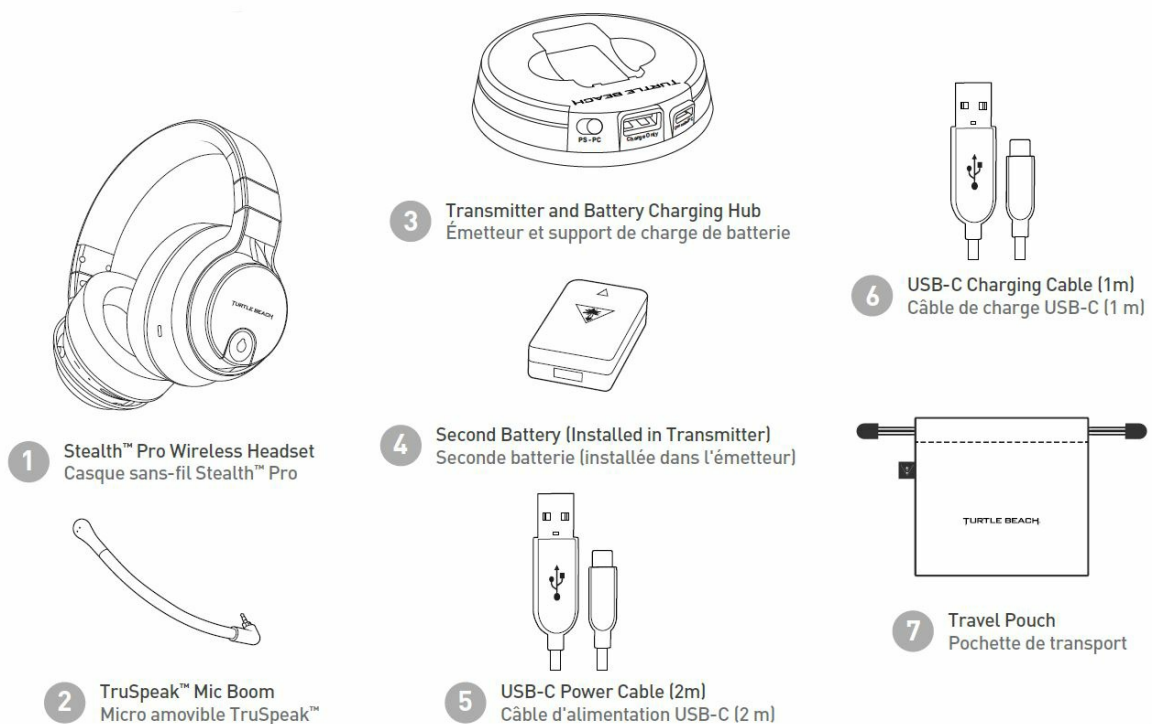
**TURTLE BEACH 22dBFS Stealth Pro Wireless Headset**



## PRODUCT INFORMATION

The Turtle Beach 22dBFS Stealth Pro Wireless Headset is designed to provide an immersive gaming experience with cutting-edge audio technology. Offering a perfect blend of comfort, performance, and wireless convenience, this headset is an ideal choice for gamers seeking a competitive edge.

## CONTENTS



1. Stealth™ Pro Wireless Headset™
2. TruSpeak™ Mic Boom
3. Transmitter and Battery Charging Hub
4. Second Battery (Installed in Transmitter)

5. USB-C Power Cable (2m)
6. USB-C Charging Cable (1m)
7. Travel Pouch

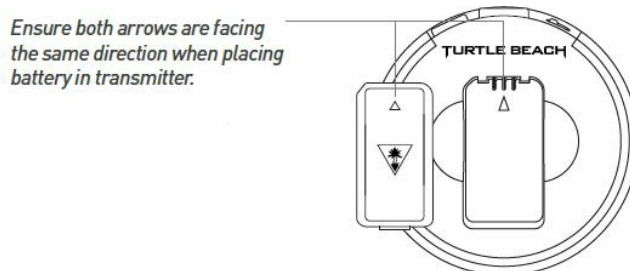
## CHARGING

Each battery pack offers 12 hours of play each charge. Keep a battery charged in the battery charging hub before storing. Your hub will momentarily pulse blue when battery installed is fully charged.

### OPTION A

Charge the battery through the wireless transmitter while connected to the console.

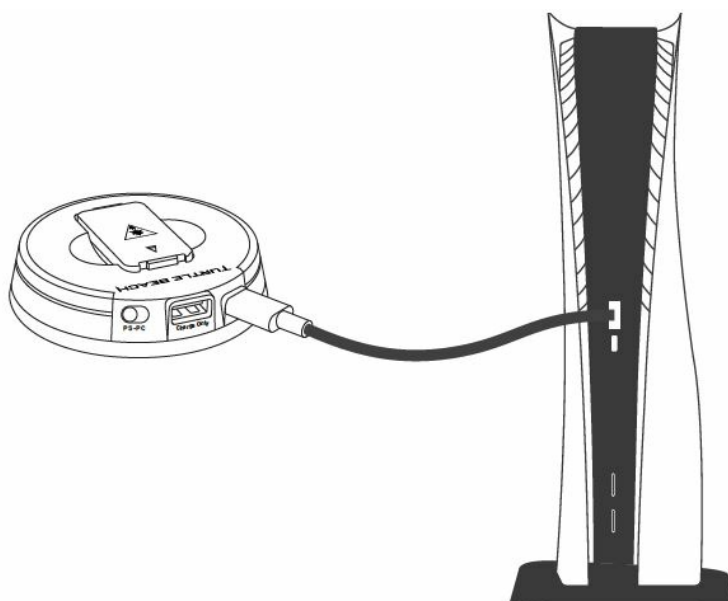
- Ensure both arrows are facing the same direction when placing battery in transmitter.



- The USB-A port on the transmitter serves as a charge only port for devices that support charging via USB-A port connection.
- Charge times may vary depending on factors such as existing battery charge level, model of device, number of devices connected to console or PC, etc.

### OPTION B

- Charge the headset using the included USB-C cable.



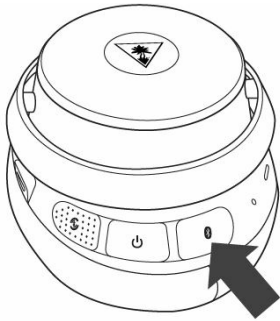
## HEADSET STORAGE

- Always charge your headset before storing it for any extended period of time (longer than 3 months).

- Never store the unit in temperatures above 113°F/45°C.

BLUETOOTH® PAIRING

FUNCTION FONCTION	ACTION ACTION
Play/Pause Lancer/Pause	Press Once Appuyer une fois
Skip Forward Passer	Press Twice Quickly Appuyer deux fois rapidement
Skip Back Retour en arrière	Press Three Times Quickly Appuyer trois fois rapidement
Answer Call Répondre à un appel	Press Once Appuyer une fois
End Call Mettre fin à un appel	Press Once Appuyer une fois
Reject Incoming Call Rejeter un appel	Press Twice Quickly Appuyer deux fois rapidement
Activate Voice Recognition (if available) Activer la reconnaissance vocale (si disponible)	Press and Hold Appuyer et maintenir



1. Hold down the Bluetooth® button until the ‘Pairing Bluetooth®’ prompt plays.
2. Connect your headphones in your Bluetooth® enabled device’s settings.

CONTROLS

**MODE Button**  
Active Noise Cancellation on/off by default.  
Remappable in TURTLE BEACH AUDIO HUB app.

**Bouton MODE**  
Activation/désactivation de l'isolation acoustique active par défaut. Peut être réassigné dans l'application TURTLE BEACH AUDIO HUB.

**Volume Wheel**  
Master volume is the primary function.  
Secondary function is Variable Mic Monitoring by default. Alternative function may be assigned in TURTLE BEACH AUDIO HUB app.

**Molette du volume**  
Le volume principal est la principale fonctionnalité. La fonctionnalité secondaire par défaut concerne le réglage du retour micro. La fonctionnalité alternative peut être assignée dans l'application TURTLE BEACH AUDIO HUB.

**USB-C Charge/Update Port**  
Port de mise à jour/charge USB-C

**LED Status Indication**  
See LED Behaviors  
Indication d'état par LED  
Consulter Comportements des LED

**Superhuman Hearing™ On/Off**  
Press [1s]

**Mute/Unmute Built-in Mic**  
Press & Hold [2s]

**Activation/Désactivation de Superhuman Hearing™**  
Appuyer [1 s]

**Activer/Désactiver le son du micro intégré**  
Maintenir appuyé (2 s)

**Power**  
Press [2s] = Power on/off  
**Alimentation**  
Appuyer (2 s) = Allumer/Eteindre

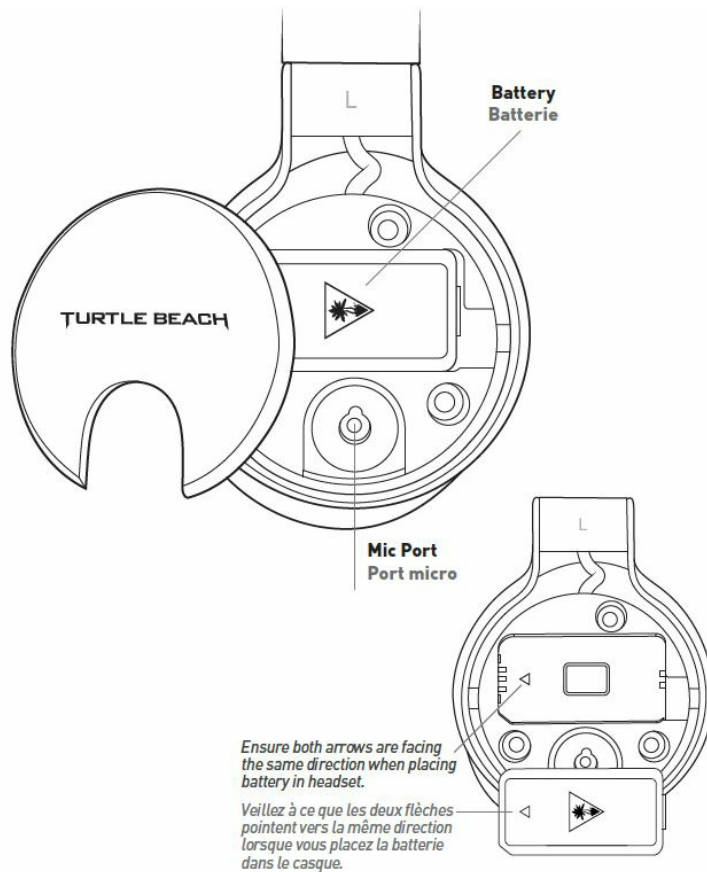
**Bluetooth® Multi-function Button**  
See Bluetooth® Pairing  
**Bouton multifonction Bluetooth®**  
Consulter l'appairage Bluetooth®

A line drawing of the Turtle Beach Audio Hub device. Lines connect various controls to their respective text descriptions. The controls include a top button (Mode), a side wheel (Volume), a side port (USB-C), a side LED indicator, a side button (Superhuman Hearing), a side button (Mute/Unmute), a side button (Power), and a side button (Bluetooth Multi-function).

COMPATIBILITY

TRANSMITTER   ÉMETTEUR	BLUETOOTH®¹
PS5™ & PS4™	Mobile
PC & Mac®	PC & Mac®
Nintendo Switch™ (docked / sur station)	Nintendo Switch™ (chat not available)² (chat non disponible)

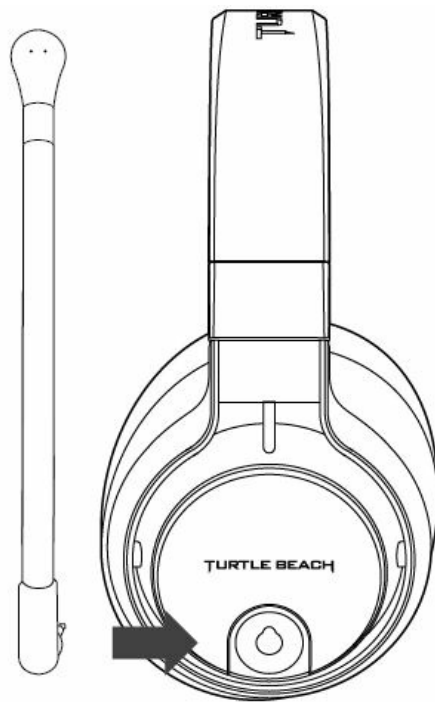
1. Some features are not available over Bluetooth® connection.
2. Chat is available for games that support in-game chat capability while connected through the USB connection only.



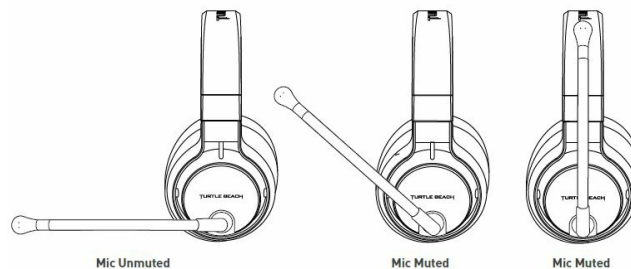
Custom EQ Presets are available through the Turtle Beach Audio Hub mobile app.

## EQ PRESETS

- Signature Sound
- Bass Boost
- Bass + Treble Boost
- Vocal Boost



- Use Superhuman Hearing™ Mode to pinpoint quiet audio cues like enemy footsteps and weapon reloads.
- During gameplay, you can activate and deactivate with a short press of the Superhuman Hearing™ button.



## MICROPHONE MUTE

### TruSpeak™ Mic

After attaching the mic boom, flip up the mic to mute. There is an audible tone when the mic mutes and unmutes. When your TruSpeak™ mic boom is not installed, the Stealth™ Pro will switch to its built-in mic.

**Note:** If the mic boom is removed during use, the headset will switch to its built-in mic and automatically mute.

### Built-In Mic

To mute or unmute your built-in mic, press and hold the Superhuman Hearing™ button for 2s until you hear the sound cue. Your transmitter LED will also indicate that your headset mic is muted.

## MAPPABLE FUNCTIONS

The Stealth™ Pro's MODE button and wheel on the right ear cup can be assigned new functions based on your gaming style. To reassign, follow these steps:

1. Download the Turtle Beach Audio Hub app on your mobile device, PC or Mac®.
2. Enable Bluetooth® on your selected device and pair with your headset to access the app.
3. Access the app, and swipe to the REASSIGNING FUNCTIONS screen and choose the functions you want to assign to the wheel and MODE. Your headset will save this configuration immediately.

## A WHEEL

(SECONDARY FUNCTION)

Press and hold your mode button for 3s to access your secondary wheel function. This can be reassigned to:

- Variable Mic Monitoring (Default)
- Variable Active Noise Cancellation
- Superhuman Hearing™ Volume
- Bluetooth® Volume
- Bass Boost Level
- Treble Boost Level
- Noise Gate Threshold

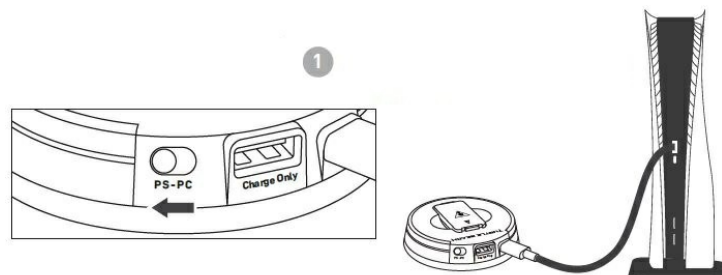
## **B MODE BUTTON**

The MODE button can be assigned based on your gaming style. This can be reassigned to:

- Active Noise Cancellation on/off (Default)
- EQ Preset Toggle
- Noise Gate on/off
- Multimedia Control (PC Only)

## **SETUP FOR PLAYSTATION & NINTENDO SWITCH**

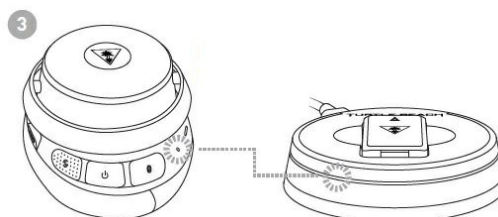
- Ensure your transmitter is set to 'PS' mode.



- Hold the headset's power button for 2 seconds.



- Solid blue LEDs will indicate a successful pair.

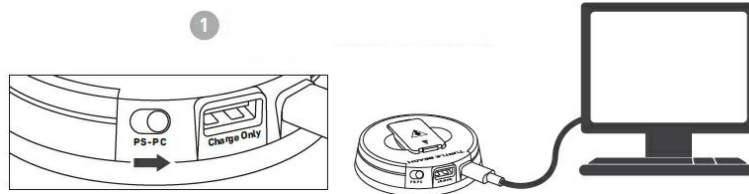


## **PlayStation 3D SURROUND SOUND**

- Go to Settings > Sound > Audio Output > Output Device
  - Select Stealth Pro for Output Device
  - Set Output to Headphones to All Audio
  - Set the Volume Control (headphones) level to Maximum
- Adjust your microphone levels by going to Settings > Sound > Microphone > Adjust Mic Level > Microphone Level
- On PS5™, enable 3D Audio to enhance through your headset, then go to Adjust 3D Audio Profile to select the best profile option for your game.

## SETUP FOR PC & MAC

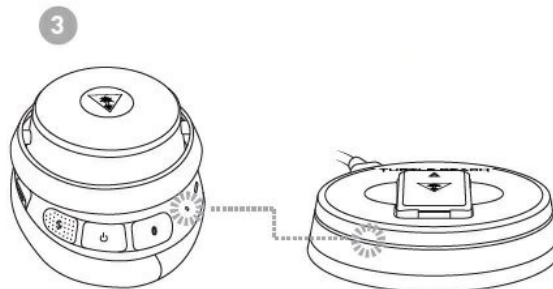
1. Ensure your transmitter is set to 'PC' mode.



2. Hold the power button for 2 seconds.

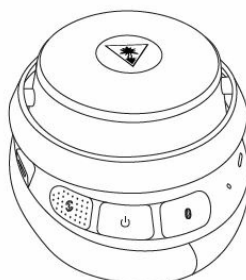


3. Solid blue LEDs will indicate a successful pair.



4. Make sure your Stealth™ Pro is selected as the input and output device within your device's audio settings.  
The Stealth Pro for PlayStation®'s PC mode optimizes the headset to operate on your PC. In this mode, you can remap your MODE button to sync with your multimedia (see MAPPABLE FUNCTIONS).

## LED BEHAVIORS





A line drawing of the Turtle Beach headset base station. It is a circular, disc-shaped device with a central port for the headset cable. The text "TURTLE BEACH" is visible on the top surface.



**TURTLE BEACH 22dBFS Stealth Pro Multiplatform Wireless** [pdf] Instructions  
22dBFS Stealth Pro Multiplatform Wireless, 22dBFS, Stealth Pro Multiplatform Wireless, Pro M  
ultiplatform Wireless, Multiplatform Wireless, Wireless

## References

- [User Manual](#)

Manuals+.