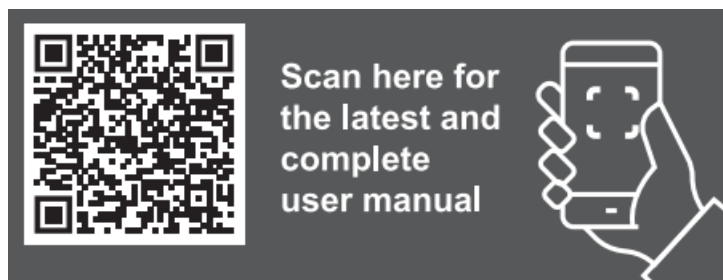




TURBOLOCK TL114 Smart Lock with Keypad and Voice Prompts Installation Guide

[Home](#) » [TurboLock](#) » TURBOLOCK TL114 Smart Lock with Keypad and Voice Prompts Installation Guide

Quick Installation Guide (TL114/TL115)



<https://turbolock.com/tl115-smart-door-lock-with-keypad-voice-prompts-and-app/>

Contents [[hide](#)]

- [1 Install the latch before starting the following steps.](#)
- [2 Install the outside section:](#)
- [3 Install the inside section:](#)
- [4 Documents / Resources](#)
- [5 Related Posts](#)

Install the latch before starting the following steps.

(Refer to complete user manual on pages 9, 12.)

- a.** Use a screwdriver to extend the bolt. (Fig. 1)
- b.** The bolt must be **EXTENDED** prior to installing the lockset. (Fig. 2)

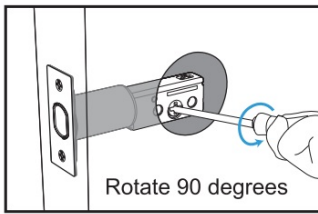


Fig. 1

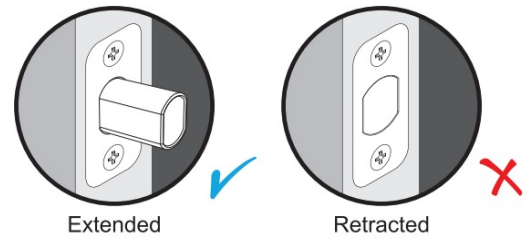
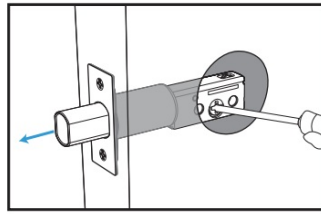


Fig. 2

Install the outside section:

- Gently feed the power cable through a diameter hole carefully over the latch. (Fig. 3)
- Adjust the latch pin to a **HORIZONTAL** position, then Insert it into the center hole of the latch. (Fig. 3)



Ensure the bolt is **EXTENDED** and the latch pin is **HORIZONTAL** when installing the outside section.



Do NOT force the cable's connector end through any part of the lock. Damaging the connector may make the lock unusable.

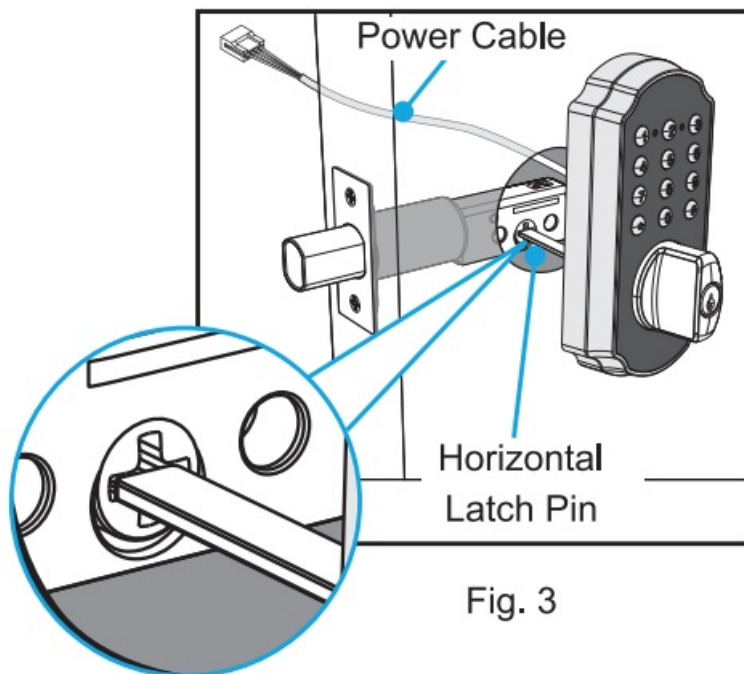


Fig. 3

Install the inside section:

- Hold the outside section then continue the installation on the inside section. If needed, have someone hold the outside section to help you complete the following steps.
- Remove battery compartment cover. (Fig. 4) Then carefully connect the two power cables. (Fig. 5) Ensure the connector is seated properly and firmly.
- Adjust the thumb of an inside section to **VERTICAL**. (Fig. 6)

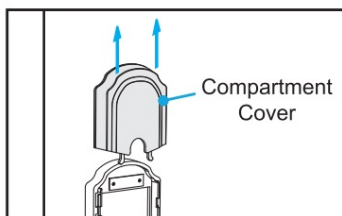


Fig. 4

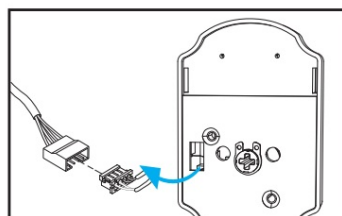


Fig. 5

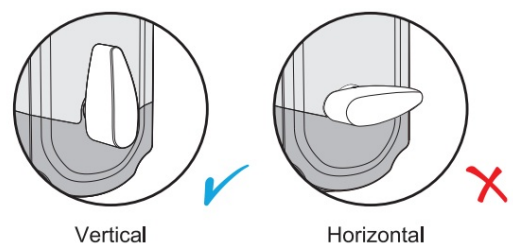


Fig. 6

- d. Assemble the inside section on the door by aligning mounting holes on the latch and inside section. Ensure the latch pin is **HORIZONTAL** when inserting it into the inside section. Then secure the inside section on the door with mounting screws. (Fig. 7)
- e. Install the 9V alkaline battery (Fig. 8) and cover the battery compartment to complete the installation. (Fig. 9)

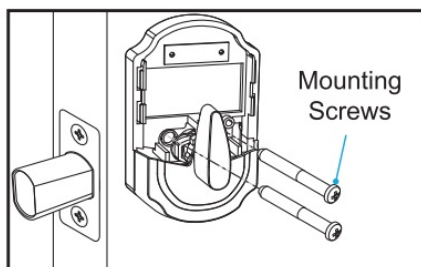


Fig. 7

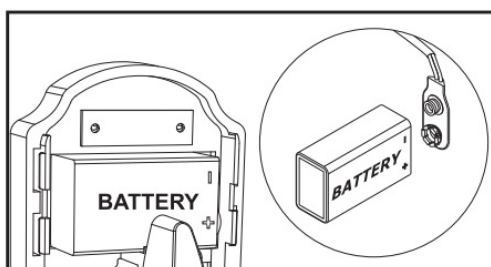


Fig. 8

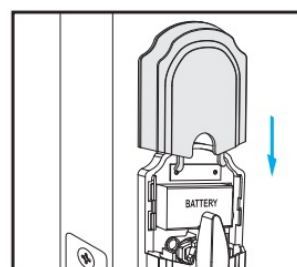


Fig. 9



Make sure the positive and negative electrodes of the battery is installed properly,

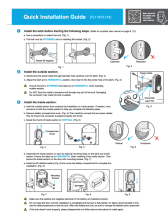


Do not close the door, until the installation is completed and the lock is fully tested. It's highly recommended to first use the default passcode to test the lock. After fully testing the lock, be sure to change the default admin passcode.



If the lock doesn't work properly, please disassemble and follow the above instructions to install again.

Documents / Resources

	<p>TURBOLOCK TL114 Smart Lock with Keypad and Voice Prompts [pdf] Installation Guide TL114, TL115, TL114 Smart Lock with Keypad and Voice Prompts, Smart Lock with Keypad and Voice Prompts, Smart Lock, Keypad and Voice Prompts Smart Lock</p>
---	--