



Tupperware BreadSmart Container Instructions

[Home](#) » [Tupperware](#) » Tupperware BreadSmart Container Instructions 

Contents

- 1 [Tupperware BreadSmart Container](#)
- 2 [Product Information](#)
- 3 [Product Usage Instructions](#)
- 4 [How to use your BreadSmart container](#)
- 5 [How to care for your BreadSmart container](#)
- 6 [Tupperware® BreadSmart](#)
- 7 [Tupperware® Large BreadSmart](#)
- 8 [Safety Precautions](#)
- 9 [Contact Information](#)
- 10 [Documents / Resources](#)
 - 10.1 [References](#)
- 11 [Related Posts](#)

Tupperware

Tupperware BreadSmart Container



Product Information

The BreadSmart container is a specially designed food storage container that uses CondensControl™ technology to create the perfect environment for storing bread. It features a unique CondensControl™ membrane in the lid rim, which allows excess humidity to be released, reducing the potential for mold growth and preventing the bread from drying out.

Product Usage Instructions

1. **Step 1:** Before using your BreadSmart container, ensure that the CondensControl™ membrane in the lid rim is intact and undamaged. It is important not to remove, damage, or perforate this membrane as it will affect the performance of the container.
2. **Step 2:** To use the BreadSmart container, simply place your bread inside the base of the container. The container is specially designed for food storage.
3. **Step 3:** Once your bread is inside the container, secure the lid by placing it on top of the base. Make sure the lid is properly aligned with the base.
4. **Step 4:** To ensure optimal performance, it is recommended to handwash the BreadSmart container. Do not use knives or sharp objects that may damage the container.
5. **Step 5:** The BreadSmart container is not suitable for freezing, microwaving, oven use, or grilling. Please avoid using it for these purposes to prevent damage to the container.

WARNING: Please note that the BreadSmart container should only be used as directed and not for any purposes other than food storage. Always follow the instructions provided to ensure proper usage and maintenance of the container.

If you have any further questions or need assistance, please contact our Customer Services Team:

- Phone: 0344 800 0491
- Email: hello@tupperwaredirect.co.uk

For instruction videos and frequently asked questions, you can also visit our website: tupperwaredirect.co.uk

Tupperware® BreadSmart / Large BreadSmart

Thank you for purchasing your Tupperware® BreadSmart container.

BreadSmart is an innovative storage solution from Tupperware® to keep bread fresher for longer. It is suitable for storing many different types of bakery items including croissants, baguettes, pastries and more.

The BreadSmart container uses CondensControl™ technology to create the perfect environment right inside the box. BreadSmart works by allowing excess humidity to be released through the CondensControl™ membrane reducing the potential for mould growth, and cleverly it also prevents your bread from drying out.

How to use your BreadSmart container

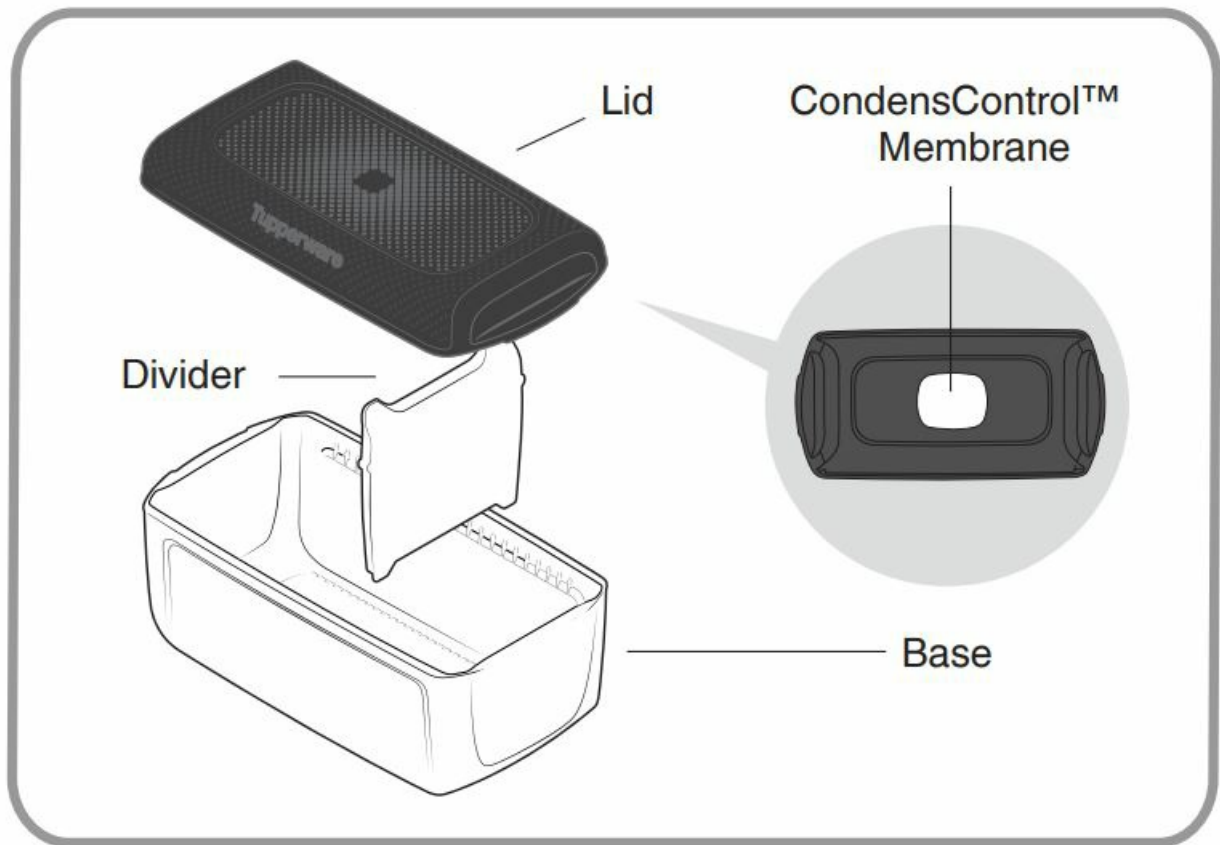
- After purchasing your bread or bakery items remove all packaging, place inside the container and place the lid on to the base.
- Note: The BreadSmart Lid is NOT designed to seal on to the base. This is so that the CondensControl™ technology will get to work, creating the perfect environment to keep your bread fresher for longer.
- Some loaves are quite tall but don't worry you can still store the loaf in your BreadSmart container, just place the loaf in the container on its side.
- Performance will vary subject to the freshness and type of bread.
- When removing your bread or bakery products from the BreadSmart container, replace the lid immediately.
- Removing the lid for long periods of time or repeatedly removing and replacing the lid will reduce the effectiveness of your BreadSmart container.
- BreadSmart should be kept in your pantry or inside a cupboard. Do not store in the fridge. Store in a cool dry place and keep out of direct sunlight.

How to care for your BreadSmart container

- Hand wash before first use.
- BreadSmart should be washed by hand using a soft cloth. Do not use abrasive cleaning products.
- Always wash and thoroughly dry the BreadSmart container after each use. Any moisture could affect performance.

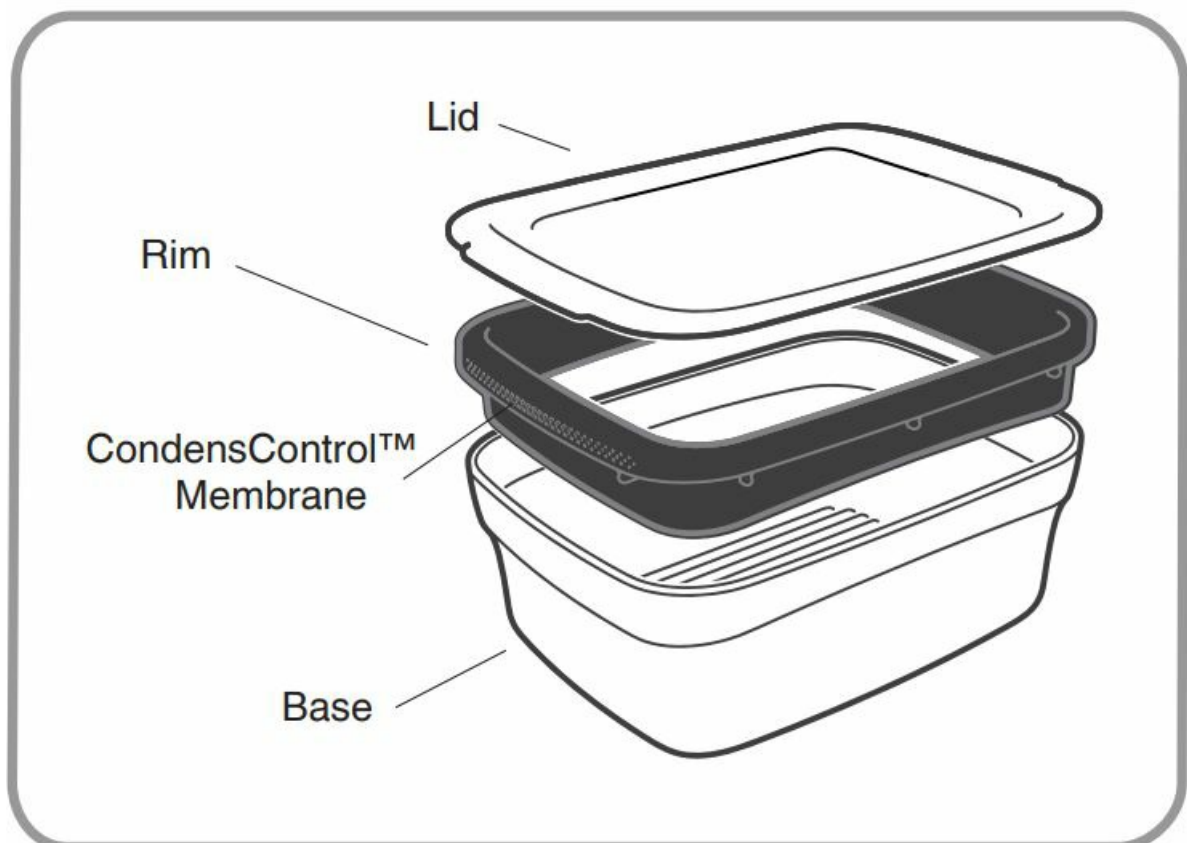
Tupperware® BreadSmart

- Parts included: Base, lid & divider.
- The divider in your Breadsmart is suitable for separating two different items and is perfect for keeping your sliced bread together.



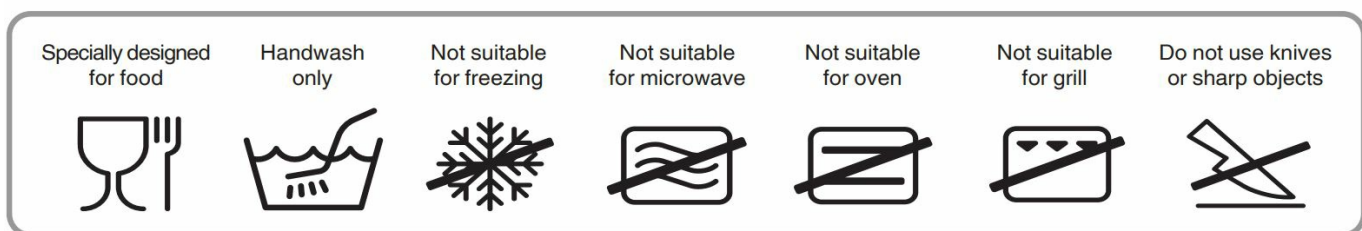
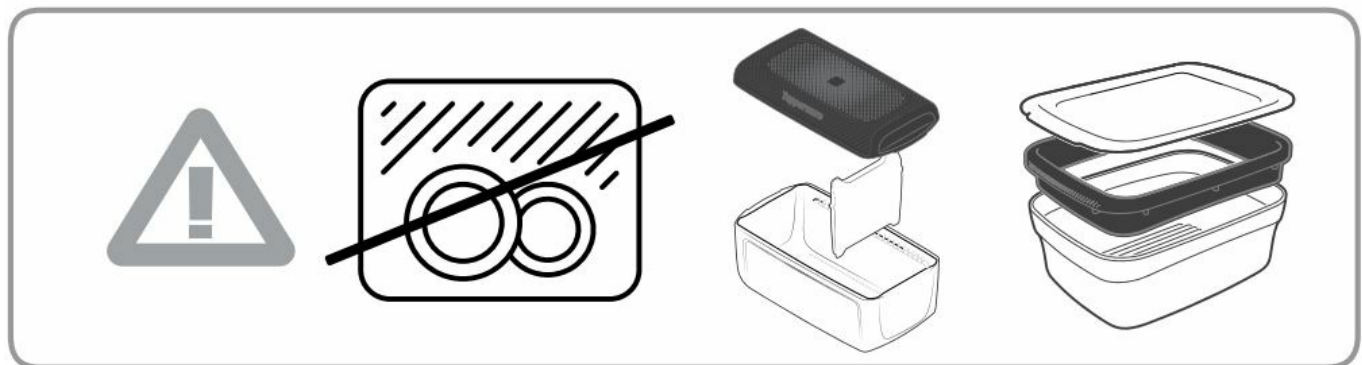
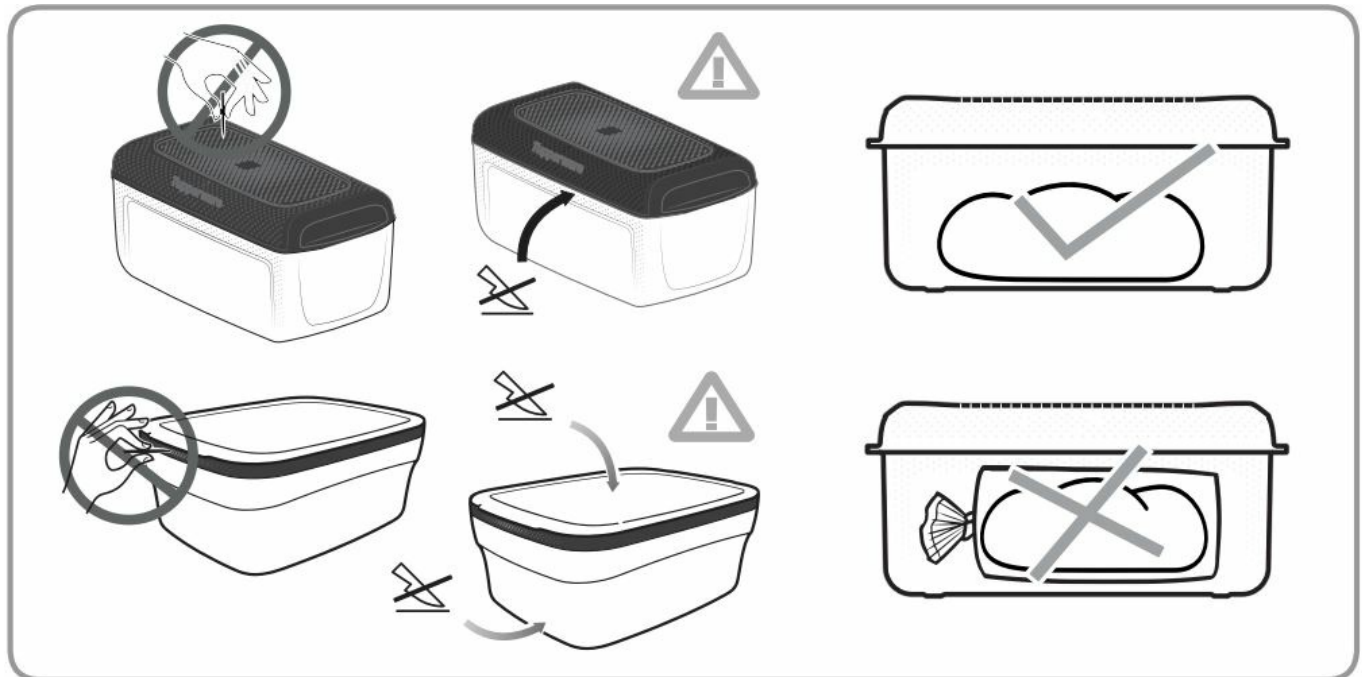
Tupperware® Large BreadSmart

- Parts included: Base, rim, lid & black rubber feet.
- Do not use the lid as a chopping board. The black rubber feet should be inserted into the base of the lid to protect your surfaces.



WARNING: Please do not remove, damage, or perforate the CondensControl™ membrane in the rim/lid as this will affect performance.

Safety Precautions



Contact Information

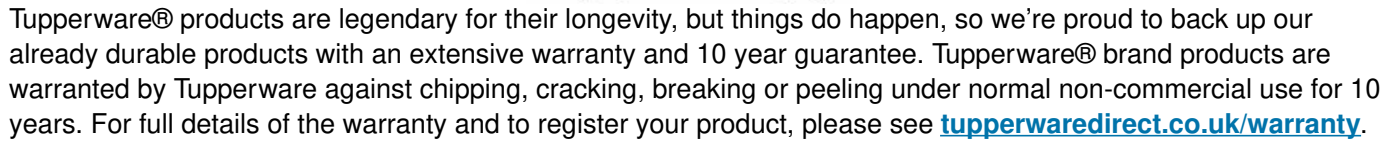
- **United Kingdom & Ireland**

Distributed by High Street TV, PO Box 7903, Corby, NN17 9HY

- **Need Help? We're here for you.**

Please contact our Customer Services Team on:

- Phone: 0344 800 0491
- Email: hello@tupperwaredirect.co.uk
- For instruction videos and FAQ's visit tupperwaredirect.co.uk

[illegible]

- **Tupperware® Direct | Official UK Site – Tupperware Direct**