




TUO TSB3194 Smart Button User Guide

[Home](#) » [TUO](#) » TUO TSB3194 Smart Button User Guide 

Contents

- [1 TUO TSB3194 Smart Button](#)
- [2 Getting started](#)
- [3 Pairing & Activation](#)
- [4 Battery replacement](#)
- [5 Resetting the button](#)
- [6 Backplate mounting](#)
- [7 Personalization](#)
- [8 Legal information](#)
- [9 FCC warning](#)
- [10 Documents / Resources](#)
 - [10.1 References](#)

T U O

TUO TSB3194 Smart Button



Getting started

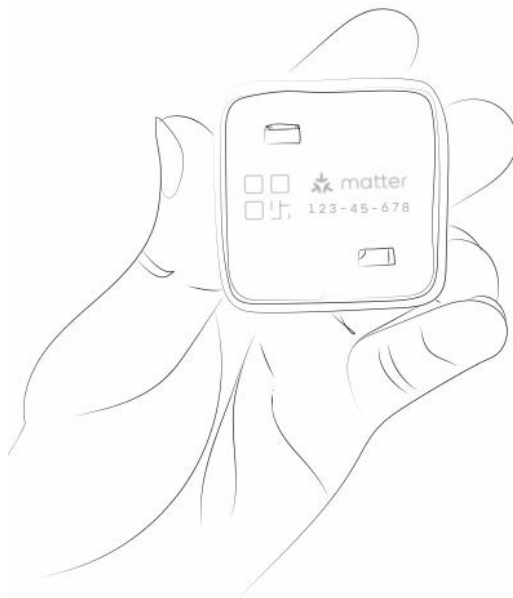
- Press the TUO Smart Button to activate.



Pairing & Activation

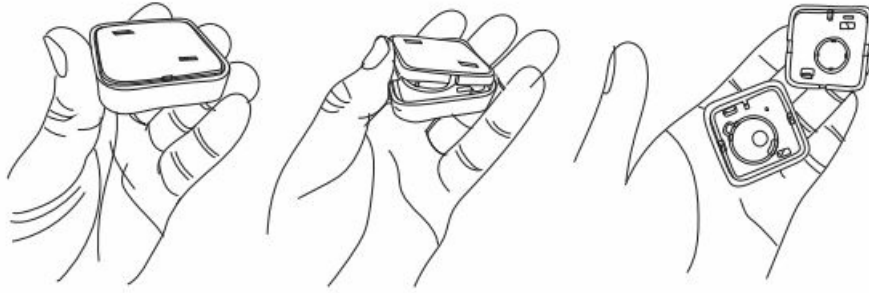
Pair the TUO Smart Button with the home hub of your choice. Ensure your network has a compatible Thread Border Router. To learn more about Thread Border Routers, head to <http://findtuo.com/borderrouter>

- Turn the TUO Smart Button around to reveal the pairing code. Scan or type in the manual pairing code in the platform of your choice.



Battery replacement

When it is time to replace the battery, simply turn the TUO Smart Button around and remove the backplate.



Resetting the button

With the backplate removed, you can push the reset button with a small pin. Push it in once to reboot the device. Push it in and hold for 5 seconds to completely reset the device. Please note that this will remove the device from the platform you are using and will require re-pairing.

Backplate mounting

The metal backplate can be mounted to any surface using the provided sticker or screw.

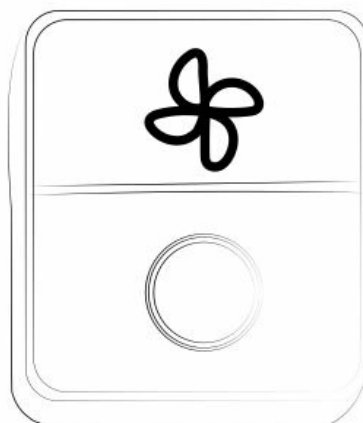


Warning

Magnet warning: This device contains a magnet and should be kept away from people with pacemakers or other medical devices that may be affected by magnetic fields. It is important to keep the device at a safe distance from these individuals to avoid any potential harm or interference with their medical devices. Please note that failure to follow the safety instructions and warnings provided in the user manual may result in injury, damage to property, or other harmful consequences.

Personalization

- Inside the packaging comes sticker packs to personalize your TUO Smart Button.



Legal information

This device complies with part 15 of the FCC rules. Operation is subject to the following two conditions: (1) this device may not cause interference, and (2) this device must accept any interference received, including interference that may cause undesired operation. This equipment has been tested and found to comply with the limits for a Class B digital device under part 15 of the FCC rules. These limits are designed to provide reasonable protection against harmful interference in a residential installation. This device generates uses and can radiate radio frequency energy, and if not installed and used under instructions, may cause harmful interference to radio communications. However, there is no guarantee that interference will not occur in a particular installation. If this device does cause harm to television reception, which can be determined by turning the equipment off and on, you are encouraged to try to correct the interference by one or more of the following measures: re-orient or relocate the receiving antenna, increase the separation between the equipment and receiver, or consult a dealer or an experienced radio/TV technician for help. Changes or modifications not expressly approved by TUO Accessories LLC can void the user's authority to operate this device.

Please keep your Matter Setup Code in a safe place. You need it to securely add TLJO Smart Button to your home.

FCC warning

This equipment has been tested and found to comply with the limits for a Class B digital device, under part 15 of the FCC Rules. These limits are designed to provide reasonable protection against harmful interference in a residential installation. This equipment generates, uses and can radiate radio frequency energy and, if not installed and used by the instructions, may cause harmful interference to radio communications. However, there is no guarantee that interference will not occur in a particular installation. If this equipment does cause harmful interference to radio or television reception, which can be determined by turning the equipment off and on, the user is encouraged to try to correct the interference by one or more of the following measures:

- Reorient or relocate the receiving antenna.
- Increase the separation between the equipment and the receiver.
- Connect the equipment to an outlet on a circuit different from that to which the receiver is connected.
- Consult the dealer or an experienced radio/TV technician for help.

Caution: Any changes or modifications to this device not explicitly approved by the manufacturer could void your authority to operate this equipment. This device complies with part 15 of the FCC Rules. Operation is subject to the following two conditions:

1. This device may not cause harmful interference, and
2. this device must accept any interference received, including interference that may cause undesired operation.

This equipment complies with FCC radiation exposure limits set forth for an uncontrolled environment. This equipment should be installed and operated with a minimum distance of 0cm between the radiator and your body.

T U O

Smart Button



Getting Started
Empowerment

[TUO TSB3194 Smart Button](#) [pdf] User Guide

TSB3194, 2BA2K-TSB3194, 2BA2KTSB3194, TSB3194 Smart Button, Smart Button, Button

References

- [User Manual](#)