




# TUO TSB-3194-2 Smart Button User Manual

[Home](#) » [TUO](#) » TUO TSB-3194-2 Smart Button User Manual 

## Contents

- [1 TUO TSB-3194-2 Smart Button](#)
- [2 Product Information](#)
- [3 Product Usage Instructions](#)
- [4 Getting started](#)
- [5 Pairing & activation](#)
- [6 Battery replacement](#)
- [7 Resetting the button](#)
- [8 Backplate mounting](#)
- [9 Legal information](#)
- [10 Documents / Resources](#)
  - [10.1 References](#)
- [11 Related Posts](#)

# T U O

**TUO TSB-3194-2 Smart Button**



## Product Information

### Specifications:

- Product Name: TUO Smart Button
- Model Number: 123-45-678
- Compatibility: Requires a compatible read Border Router
- Power Source: Battery-operated
- Mounting: Metal backplate can be mounted with sticker or screw
- Safety: Contains a magnet, keep away from people with pacemakers or other medical devices affected by magnetic fields
- Compliance: FCC Part 15 compliant

## Product Usage Instructions

### Pairing the TUO Smart Button

To pair the TUO Smart Button with your home hub, follow these steps:

1. Ensure your network has a compatible read Border Router.
2. Visit <http://findtuo.com/borderrouter> to learn more about read Border Routers.
3. Follow the instructions provided by your home hub to pair the TUO Smart Button.

## Battery Replacement

When it is time to replace the battery, follow these steps:

1. Turn the TUO Smart Button around and remove the backplate.
2. With the backplate removed, locate the reset button.
3. Push the reset button with a small pin once to reboot the device.
4. Push and hold the reset button for 10 seconds to completely reset the device. Note that this will remove the device from the platform you are using and will require re-pairing.

## Mounting the Smart Button

The metal backplate can be mounted to any surface using the provided sticker or screw. Follow these steps:

1. Clean the surface where you want to mount the backplate.
2. Peel off the adhesive backing from the sticker or use a screw to attach the backplate securely.
3. Ensure the backplate is firmly attached to the surface.

### • FAQ (Frequently Asked Questions)

- Q: What should I do if I have a pacemaker or other medical device affected by magnetic fields?  
A: Keep the TUO Smart Button at a safe distance from individuals with pacemakers or other medical devices to avoid potential harm or interference. Failure to do so may result in injury or damage to their medical devices.
- Q: Can I personalize my TUO Smart Button?  
A: Yes, inside the packaging, you will find sticker packs to personalize your TUO Smart Button.
- Q: What do I need to securely add the TUO Smart Button to my home?  
A: You need to keep your Matter Setup Code in a safe place. It is required to securely add the TUO Smart Button to your home.

## Getting started

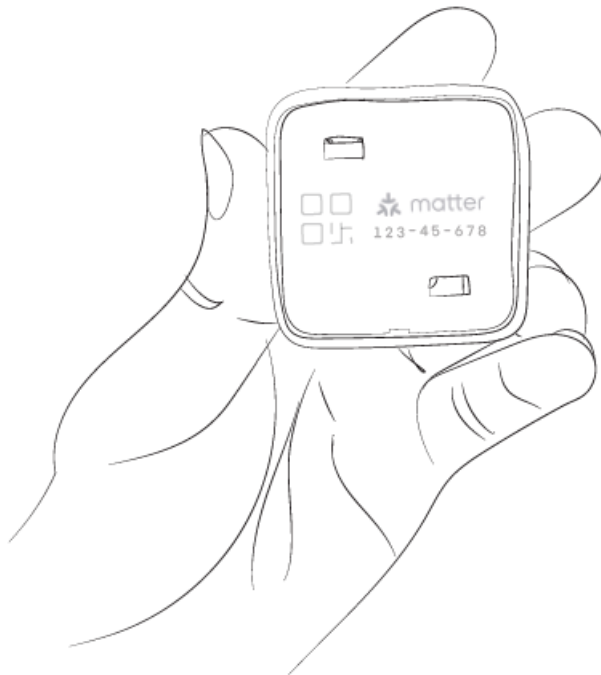
Press the TUO Smart Button to activate



## Pairing & activation

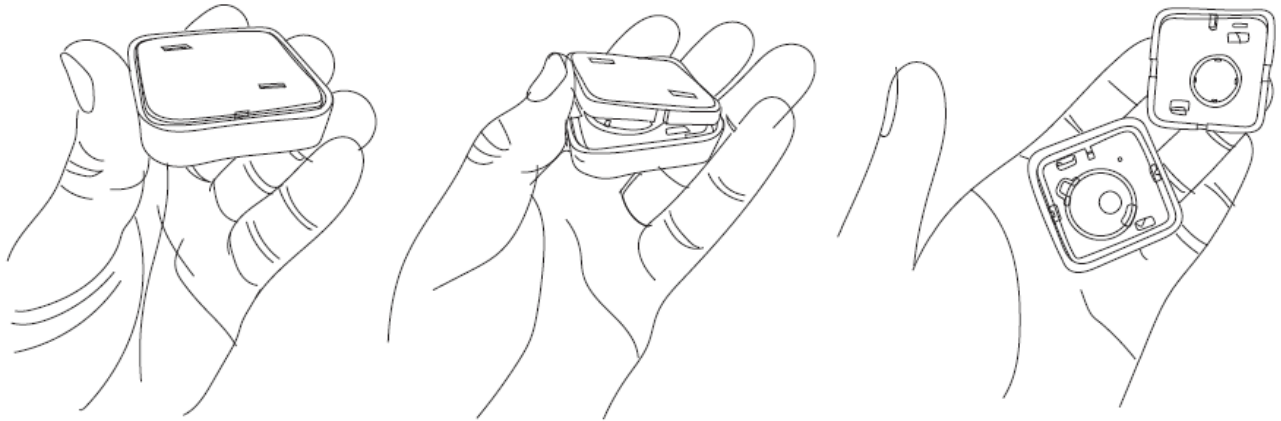
- Pair the TUO Smart Button to the home hub of your choice. Ensure your network has a compatible thread Border Router.
- To learn more about thread Border Routers, head to <http://findtuo.com/borderrouter>

Turn the TUO Smart Button around to reveal the pairing code. Scan or type in the manual pairing code in the platform of your choice



## Battery replacement

When it is time to replace the battery, simply turn the TUO Smart Button around and remove the backplate.

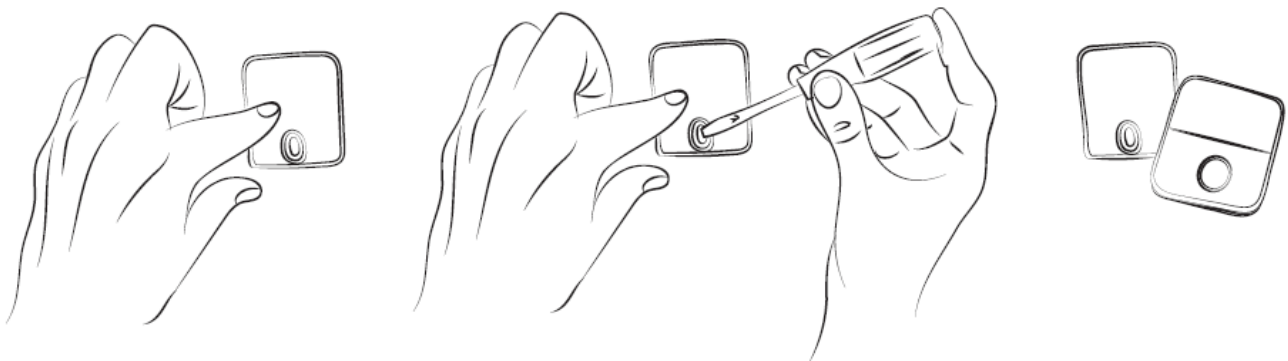


### Resetting the button

- With the backplate removed, you can push the reset button with a small pin. Push it in once to reboot the device.
- Push it in and hold for 10 seconds to completely reset the device. Please note that this will remove the device from the platform you are using and will require re-pairing.

### Backplate mounting

The metal backplate can be mounted to any surface using the provided sticker or screw



### Warning

Magnet warning: This device contains a magnet and should be kept away from people with pacemakers or other medical devices that may be affected by magnetic fields. It is important to keep the device at a safe distance from these individuals to avoid any potential harm or interference with their medical devices.

Please note that failure to follow the safety instructions and warnings provided in the user manual may result in injury, damage to property, or other harmful consequences

### Personalization

Inside the packaging comes sticker packs to personalize your TUO Smart Button.



## Legal information

- This device complies with part 15 of the FCC rules. Operation is subject to the following two conditions: (1) this device may not cause interference, and (2) this device must accept any interference received, including interference that may cause undesired operation.
- This equipment has been tested and found to comply with the limits for a Class B digital device under part 15 of the FCC rules. these limits are designed to provide reasonable protection against harmful interference in a residential installation. this device generates uses and can radiate radio frequency energy, and if not installed and used by instructions, may cause harmful interference to radio communications. However, there is no guarantee that interference will not occur in a particular installation.
- If this device does cause harm to television reception, which can be determined by turning the equipment off and on, you are encouraged to try to correct the interference by one or more of the following measures: re-orient or relocate the receiving antenna, increase the separation between the equipment and receiver, or consult a dealer or an experienced radio/TV technician for help.
- Changes or modifications not expressly approved by TUO Accessories LLC can void the user's authority to operate this device.
- This equipment complies with FCC radiation exposure limits set forth for an uncontrolled environment. This equipment should be installed and operated with a minimum distance 0cm between the radiator and your body.


Please keep your Matter Setup Code in a safe place. You need it to securely add a TUO Smart Button to your home.

[findtuo.com](https://findtuo.com)

Model: TSB-3194-2 • FCC ID: 2BA2K – TSB3194

---

## Documents / Resources

	<p><a href="#">TUO TSB-3194-2 Smart Button</a> [pdf] User Manual</p> <p>TSB-3194-2 Smart Button, TSB-3194-2, Smart Button, Button</p>
---	---

## References

- [User Manual](#)