

TUNING SOLUTIONS Bluetooth Wireless CarPlay Box User Manual

Contents

- [1 User Manual](#)
- [2 Tuning Solutions](#)
 - [2.1 Product features](#)
 - [2.2 Accessories](#)
 - [2.3 Wiring diagram for VW](#)
 - [2.4 Original car button definition](#)
 - [2.5 Wireless CarPlay](#)
 - [2.5.1 Wireless carplay and Android auto connection steps](#)
 - [2.5.2 Wireless CarPlay disconnect method:](#)
 - [2.6 Wireless Airplay](#)
 - [2.7 Wireless Android Auto](#)
 - [2.8 Wired Autolink](#)
 - [2.9 Bluetooth music and Bluetooth phone function](#)
 - [2.10 YouTube](#)
 - [2.11 USB Music & HD Video Playback](#)
 - [2.11.1 Frequently Asked Questions\(FAQ\)](#)
- [3 Documents / Resources](#)
 - [3.1 References](#)
- [4 Related Posts](#)

User Manual



Tuning Solutions



Product features

1. Wireless Apple CarPlay/Android auto, pairing via Bluetooth, transfer via WIFI.
2. Support Airplay/Autolink
3. Work Wired CarPlay, turn off wifi at first, and connect via lighting cable (meanwhile wired keep your phone charged)
4. Enjoy your favorite videos and music.
5. Voice control by saying "Hey Siri..."
6. Aftermarket front/rear/360 camera input. (Support Dynamic guidance lines)
7. U-disk to play music and videos by connecting USB port from CarPlay kit
8. Support original BT to play sound and make phone call
9. Full OEM buttons control.
10. HDMI input, with HDMI device to get more high-definition video.

Accessories



Power cable



LVDS cable

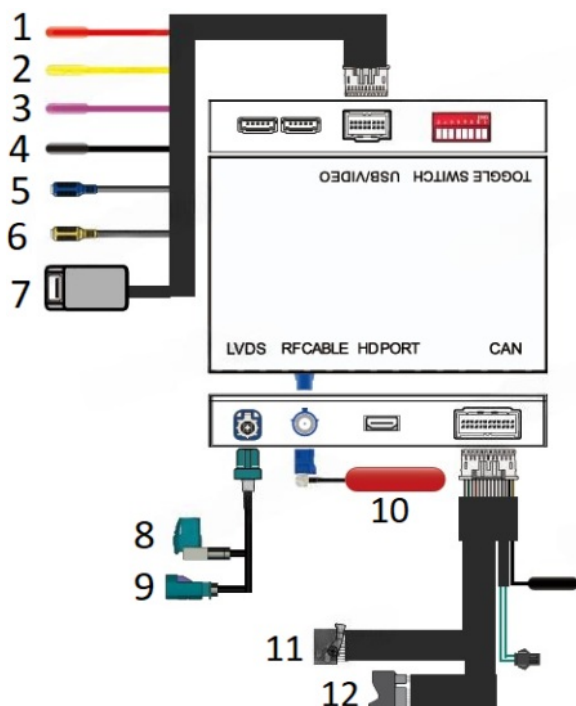


AV-USB cable

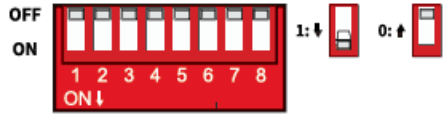


Wifi antenna

Wiring diagram for VW



1. Front camera power supply
2. Reverse camera power supply
3. Reversing detection
4. Ground cable
5. Front camera CVBS input
6. Reverse camera CVBS input
7. USB port, for USB audio/video playback or system upgrade
8. Connect to OEM LVDS port on head unit
9. Connect with LVDS unplugged from the head unit
10. Wifi antenna, place it away from metal
11. Connect to the head unit plug
12. Connect with OEM power cable

	
Screen size	DIP code setting
5.8 inches (480*240)	11001000
7 inches (800*480)	11010000
8 inches (960*540)	11001100

The 7th dip code is for parking button setting: if the original car has a parking button, set to OFF; if the original car not have a parking button, then set to ON;

The 8th dip code: If the original car has a microphone, set to OFF; if the original car not have Bluetooth, then set to ON (need to install our microphone);

Original car button definition

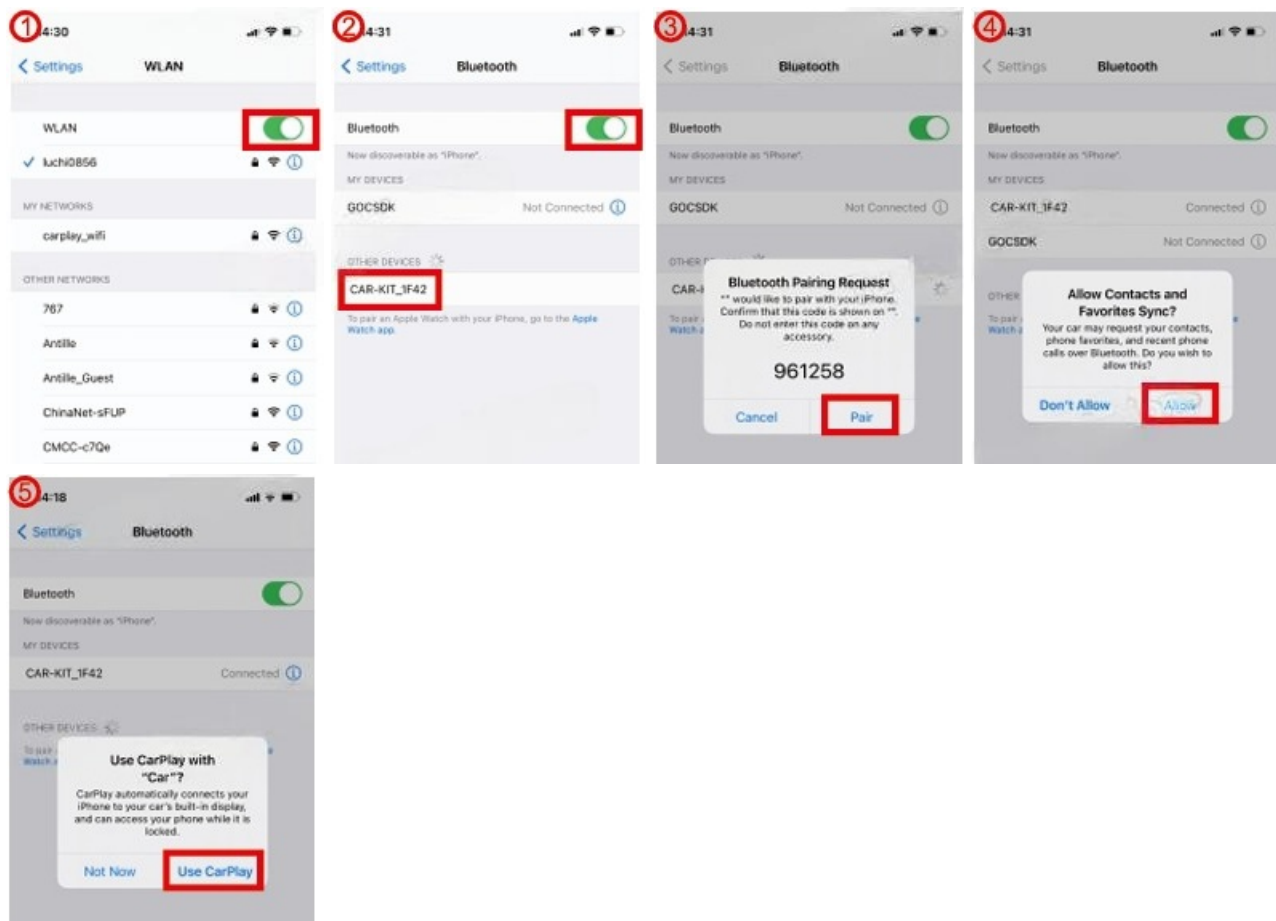
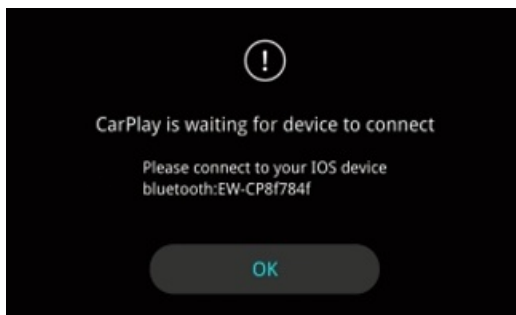
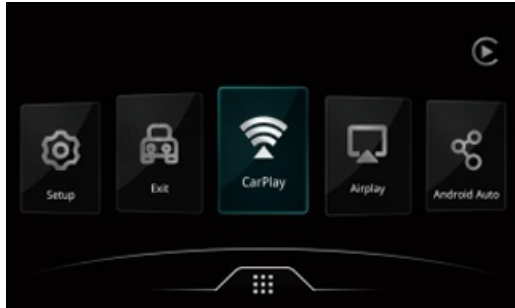
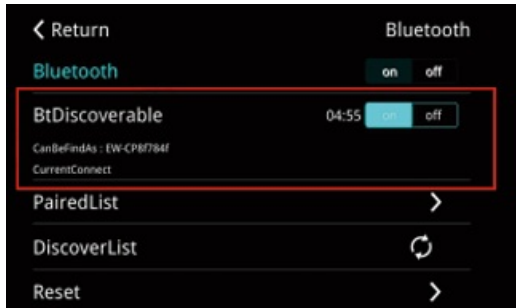


- 1/ 2/ 3/ 5/ 6: Back to OEM system when in carplay system
6. Long press 12s to restart the carplay mmi box
7. Short press on the CarPlay interface is the return function, long press for 3 seconds allows switching between the original car and the carplay interface
8. Move the pointer
9. Short press indicates the confirmation function, long press to wake up Siri in carplay interface

Wireless CarPlay

Wireless carplay and Android auto connection steps

1. Turn on the Bluetooth visible option in the settings.
2. Return to the system main interface and click the CarPlay icon.
3. Turn on the wifi and Bluetooth options in the phone settings. Use the phone to search for the Bluetooth name EW-XXXX.
4. Click Pairing-Allow-Use carplay on the phone. The system will automatically connect successfully.



If wireless carplay cannot be connected:

1. Click on the carplay Bluetooth (EW-CPXXX) and wifi on the phone to reconnect
2. Clear the Bluetooth devices on the phone and the car, and then pair and connect,
3. Restore the mobile network on the phone
4. Check whether CarPlay on your phone is turned on. (Settings – Screen Usage Time – Content and Privacy Access Permissions – Allowed APP)
5. Turn on all Siri permissions
6. If necessary, check whether the wifi antenna is installed correctly (keep away from metal)

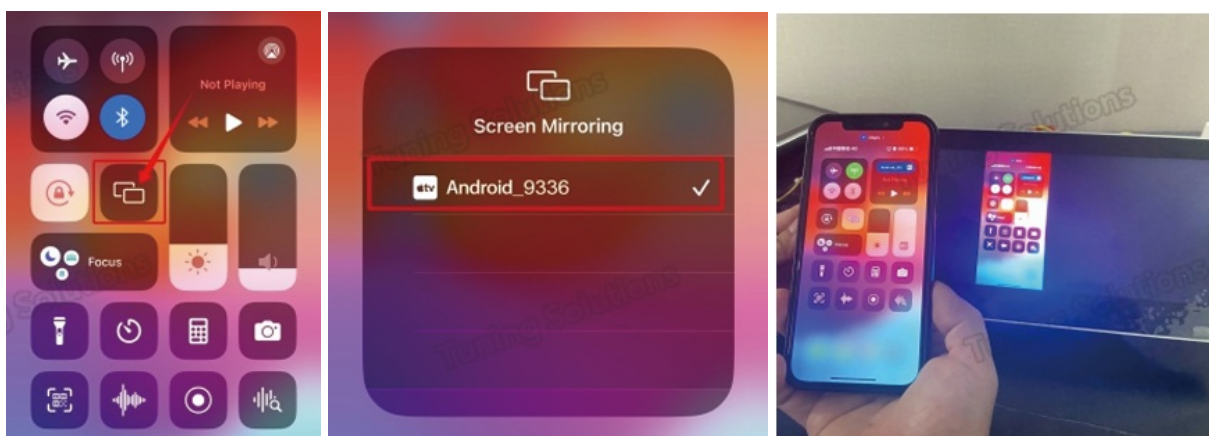
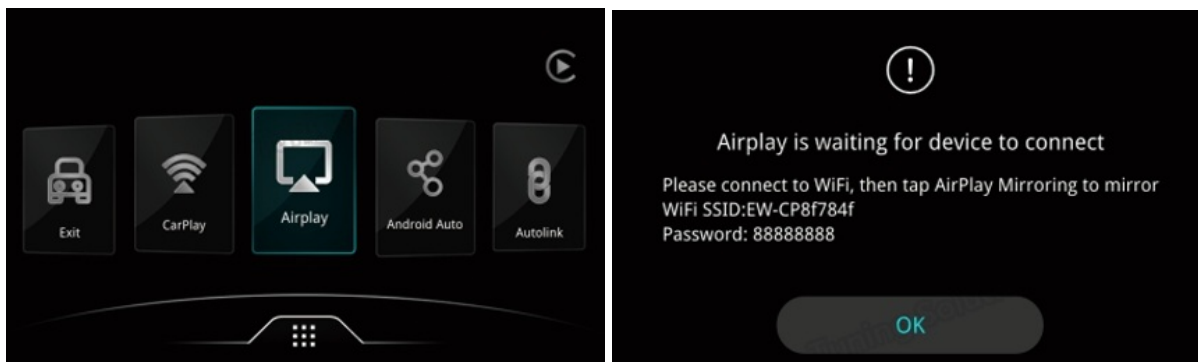
Wireless CarPlay disconnect method:

1. Disconnect the Bluetooth connection between the phone and the box.
2. Turn off wifi in the phone settings

Wireless Airplay

Please note: Disconnect the Bluetooth and WiFi connections of CarPlay before connecting.

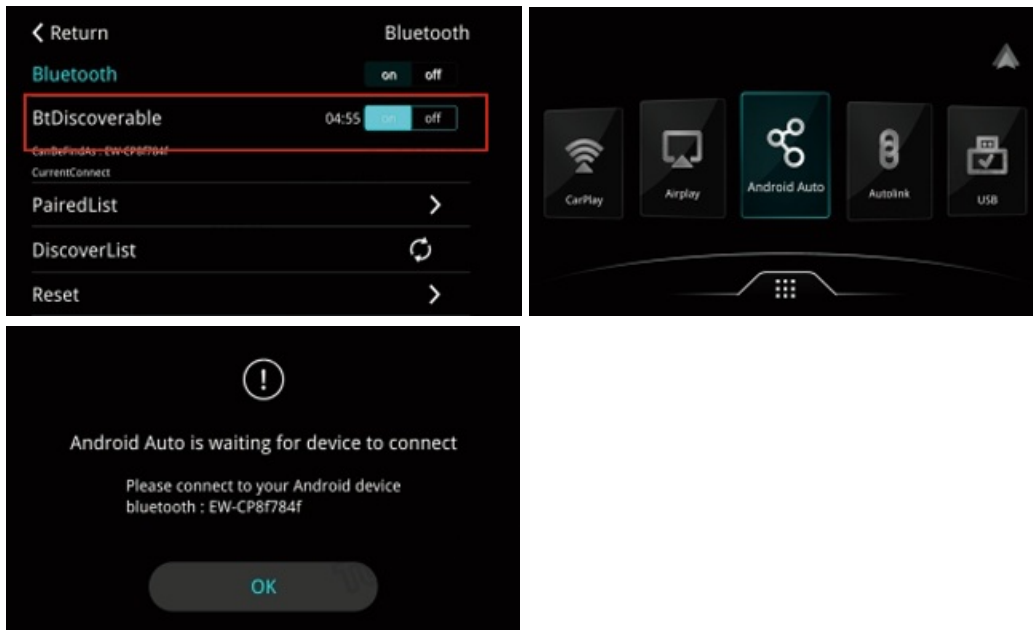
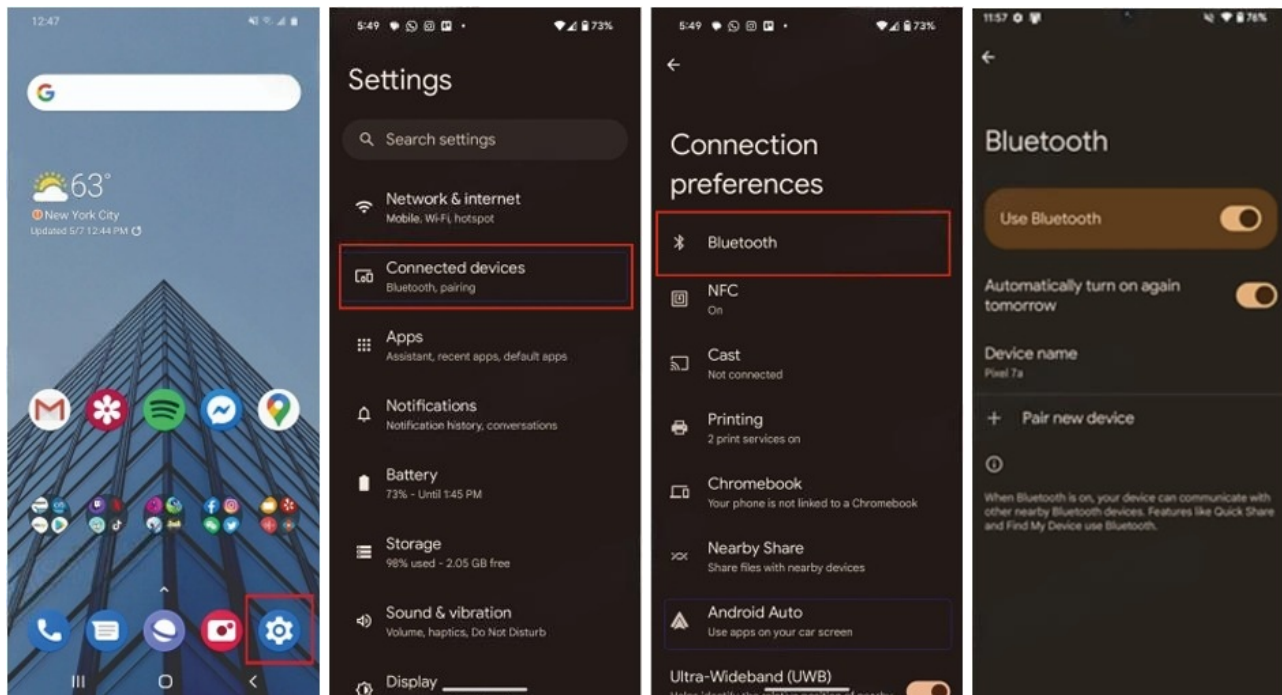
- (1) Click the **[AirPlay]** icon in the main menu.
- (2) On your mobile phone, find the corresponding SSID in WiFi settings (e.g., EW-CPXXXX) and enter the password 88888888.
- (3) Bring up the phone's menu bar, select Screen Mirroring from the menu options, and then click AirPlay to complete the mirroring.



Wireless Android Auto

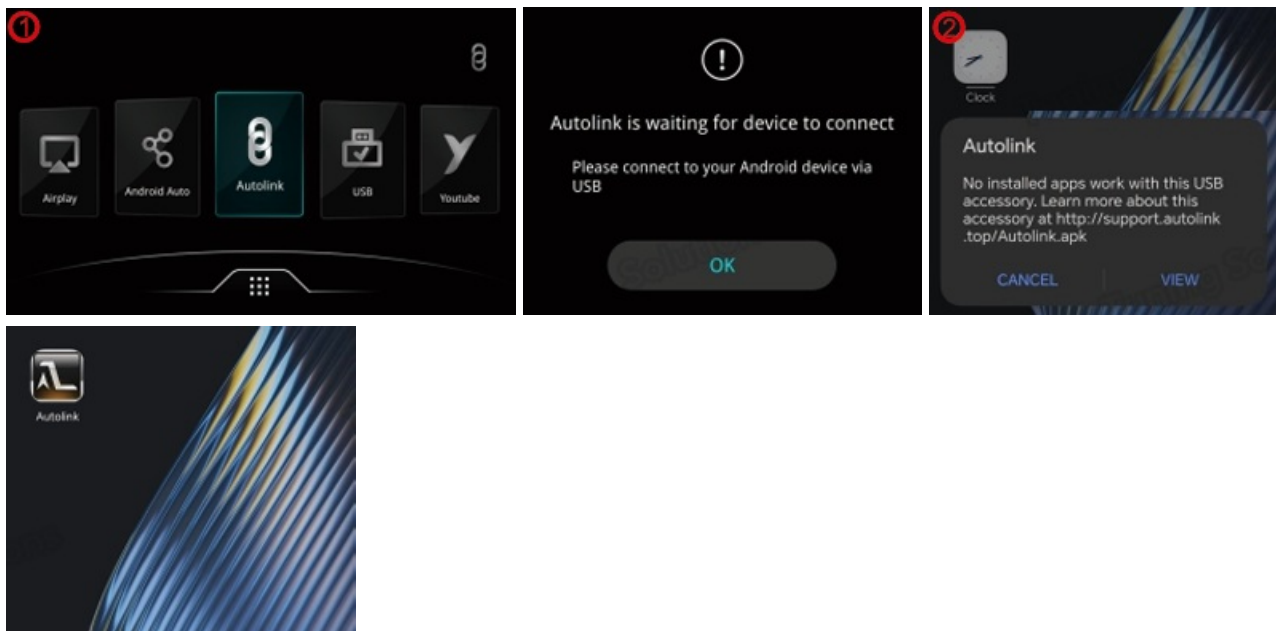
- (1) Turn on the CarPlay MMI, select Bluetooth in the system **[Settings]**, and make the Bluetooth visible.
- (2) Return to the system's main interface and click the **[Android Auto]** icon.

- (3) Ensure the phone's Bluetooth, Wi-Fi, and location services are turned on during the setup. Then, go to **[Settings] > [Bluetooth]** on the phone, search for the Bluetooth name (EW-CPXXx), and click to pair.
- (4) After the phone successfully pairs with the vehicle via Bluetooth, Android Auto will start within a few seconds. If it does not start automatically, follow the prompts on the screen to launch Android Auto. Note: You may need to tap the Android Auto icon on the vehicle screen.



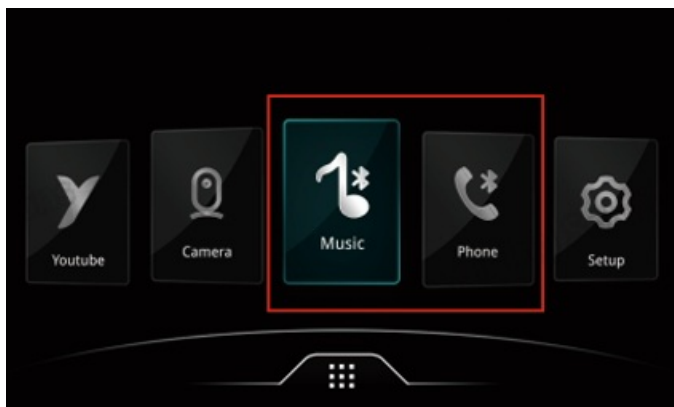
Wired Autolink

- (1) Click the **[Autolink]** icon on the screen and select "Confirm".
- (2) Connect the mobile phone to the USB port of the MMI box via a data cable. The mobile phone will prompt you to enter the browser to download and install the "Autolink APP".
- (3) Reopen the Autolink APP on the mobile phone and unplug the data cable.



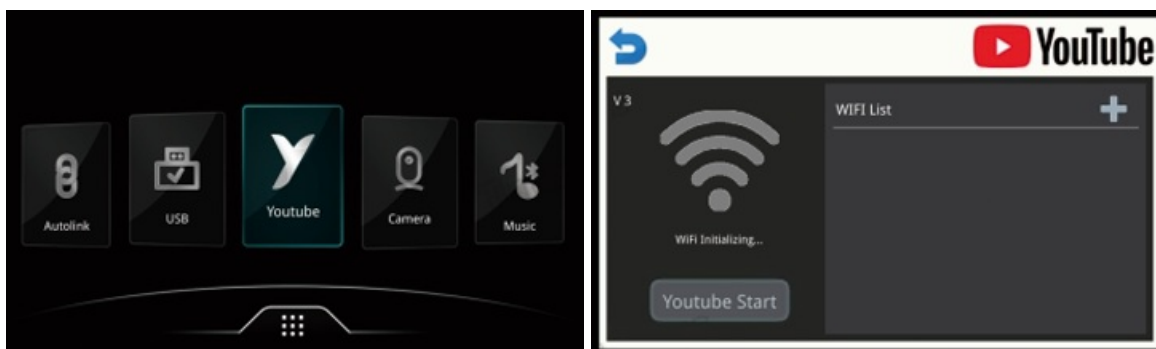
Bluetooth music and Bluetooth phone function

Make sure the phone is disconnected from the wireless Carplay/Android Auto, then connect the box's Bluetooth, Wired Autolink and then click the Bluetooth music or Bluetooth phone icon to use these two functions.



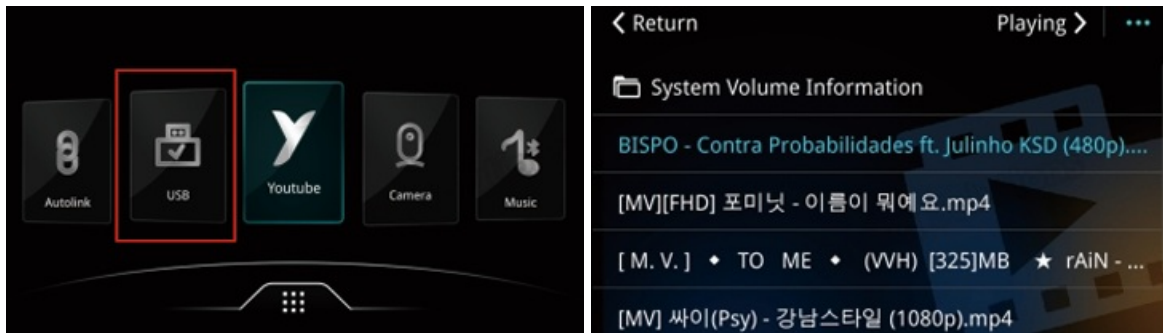
YouTube

- (1) Click the **[YouTube]** icon on the screen to enter the program.
- (2) Turn on the mobile phone hotspot. Search for the phone's WiFi name on the car screen and enter the password.
- (3) Wait for YouTube to connect successfully.



USB Music & HD Video Playback

1. Insert the USB with video and music files first, click the **[USB]** icon
2. Switch between music and video functions, click the three dots in the upper right corner to select audio or video function

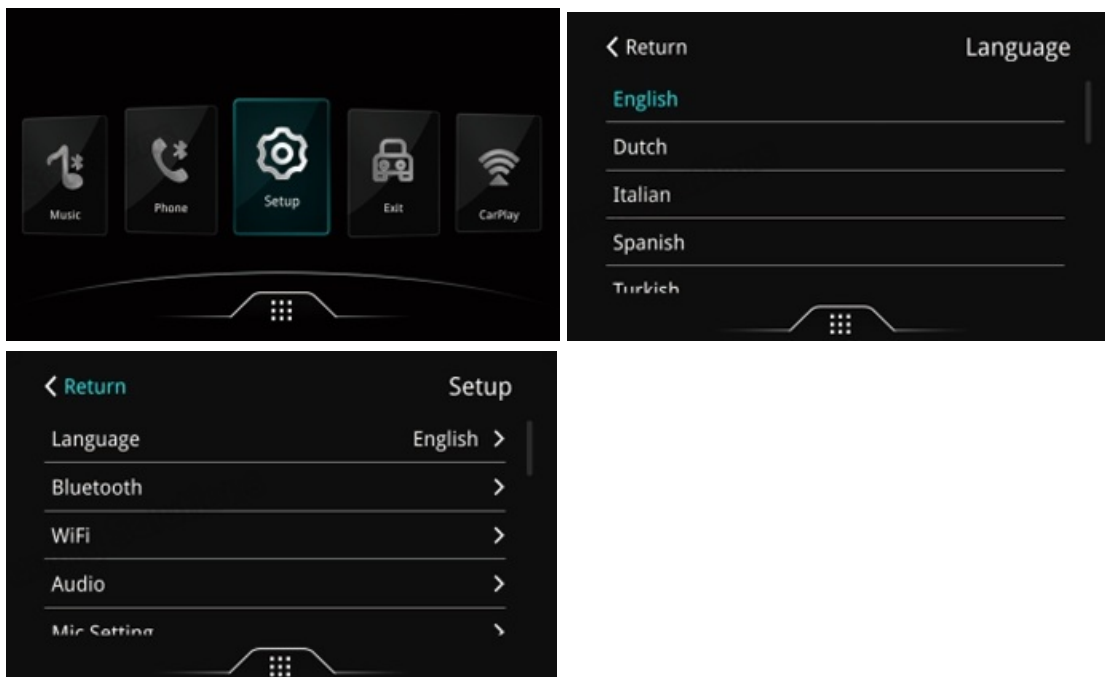


Frequently Asked Questions(FAQ)

1. How to set the language?

Enter the **[Setup]** icon. Select the language option. Set the corresponding language.

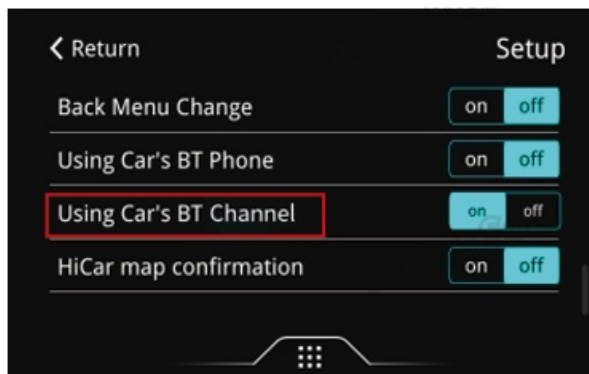
MMI box supported languages: Chinese, English, Italian, Polish, Spanish, Turkish, French, Korean, Portuguese, German



2. How to use the original Bluetooth channel function?

1. Turn on setting **[Use original car's BT channel]**
2. Search and connect original car's BT on phone first
3. Search and connect carplay's BT 'EW-CPXXX'
4. Select Bluetooth audio output in the original system. Carplay will play music and navigation sounds.

The screen mirroring and USB audio and video functions cannot be output when using the original car Bluetooth.



4. Reversing option function description

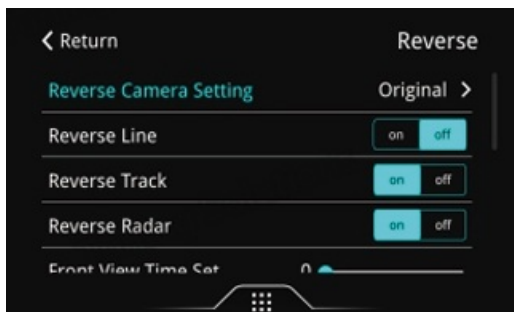
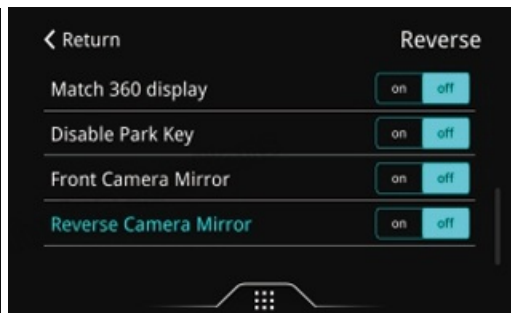
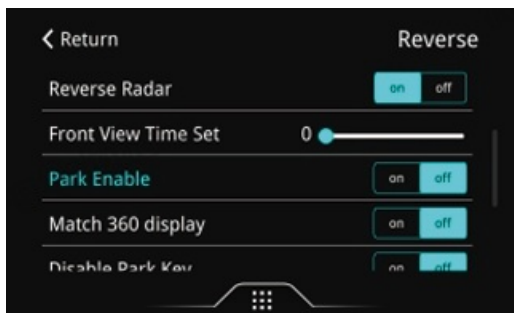
*You can choose the front camera display time from 0~15s.

*If the vehicle is equipped with an aftermarket 360 camera (not the original 360 camera). You need to set the matching 360 camera to ON in the reversing settings.

*Front Camera Mirror ON/OFF

*Rear Camera Mirror ON/OFF

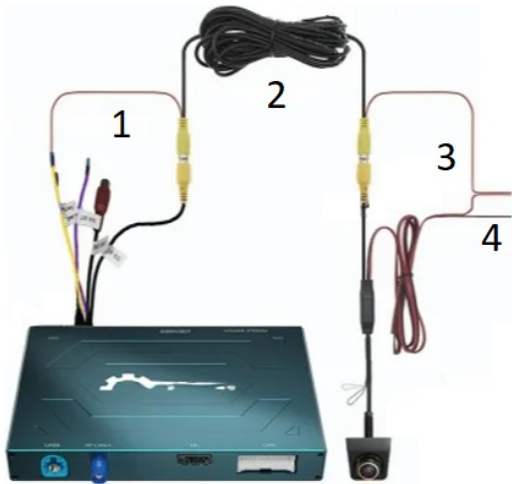
*Reverse Radar ON/OFF, Reverse Track ON/OFF



3. How to set the Reverse option

Automatic transmission:

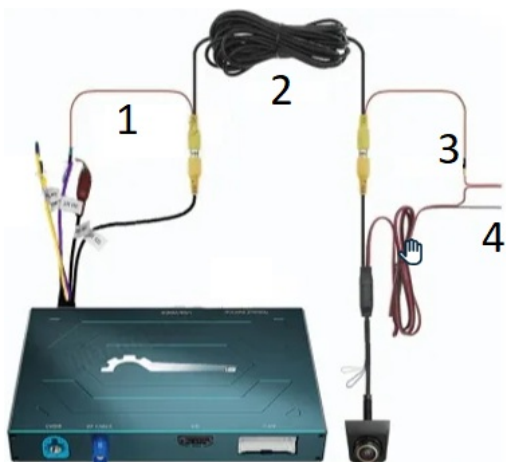
- (1) Attach the reverse camera to the CVBS port labeled "Reverse Camera."
- (2) Connect the yellow cable labeled "12V Reverse Camera" to camera's power supply.
- (3) Navigate to Settings > Reverse > Reverse Camera > Aftermarket.
- (4) Ensure the camera option is set to Aftermarket. In the reverse camera settings, set the Reverse Line to OFF. All other options should remain at their default settings.



1. cam 12V
2. 6m cable
3. connect together
4. GND

Manual transmission

- (1) Connect the reversing camera to the CVBS "Reversing Camera."
 - (2) Connect the purple cable labeled "Reversing Detection 12V" to the camera's power supply.
 - (3) Click Settings > Reversing > Reversing Camera> Aftermarket
 - (4) Set the camera option to "Aftermarket". Ensure the reverse wire is set to "ON".
Other options remain unchanged.
 - (5) Connect the rear-view camera's power wire to the "12" power supply of the reverse light
- *For vehicles equipped with an original camera, select the camera option "Original" and ensure the reverse wire option is set to "OFF". All Other options remain unchanged.

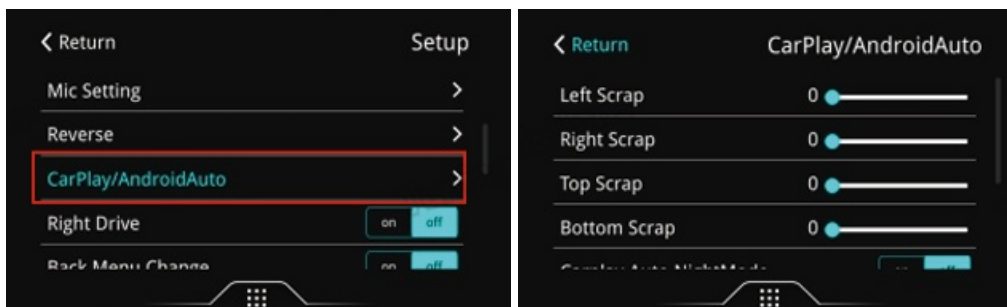


1. Test line
2. 6m cable
3. reverse lamp 12V
4. GND

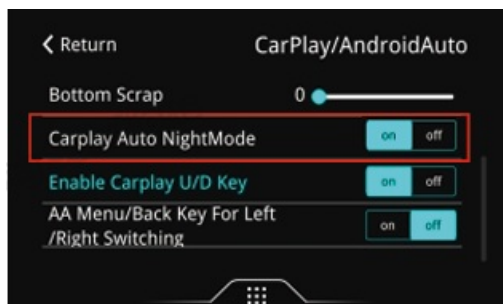


5. The up, down, left, and right positions of CarPlay and Android Auto images are not fully displayed.

You need to adjust the up, down, left, and right display. Find carplay and Android Auto in the settings and adjust the up, down, left, and right display data.

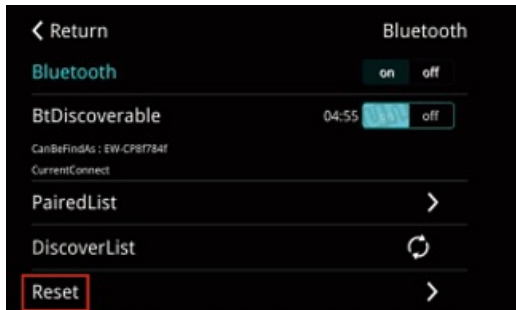
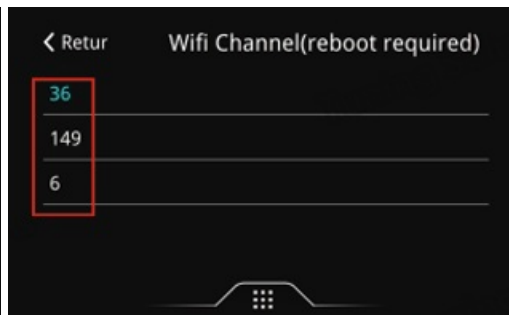
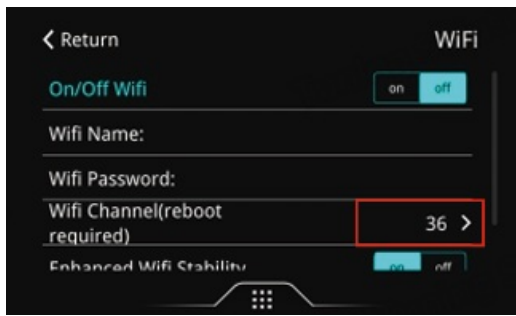


6. How to set CarPlay and Android Auto automatic night mode?

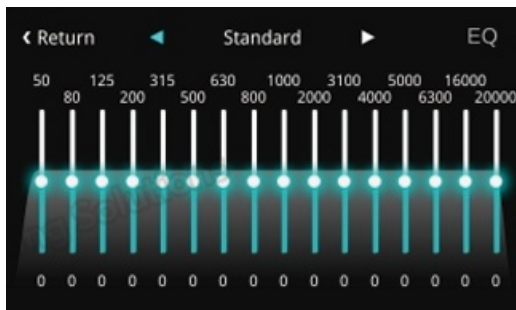
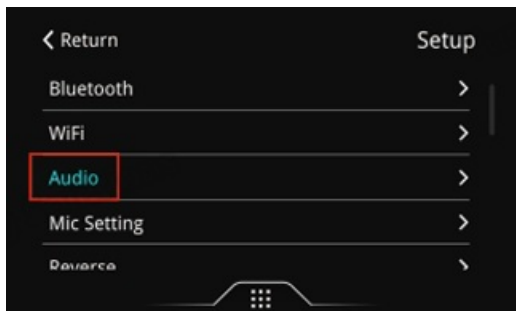


7. Solution to black screen after CarPlay or Android Auto is connected:

- *Place the wifi antenna close to the phone. Do not stick it on metal.
- *Change the wifi channel in the settings. You can choose signal channels such as 36, 169, and 6.
- *Press the BACK button for 5 seconds to restart the system.
- *Go to Settings-Bluetooth-Reset Bluetooth of the box.
- *Go to Phone Settings-General-Restore-Restore Network Settings, and then restart the phone. Then re-pair CarPlay or Android Auto.



8. Audio settings

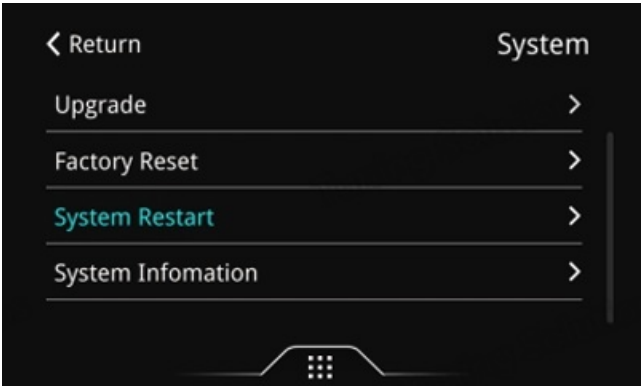


9. No sound when playing music or making calls after installing MMI BOX?

*Set AUX in the original car system, and disconnect the original car Bluetooth with the phone.

10. If the options cannot be saved after setting and the function is abnormal

you can restore the factory settings.



Documents / Resources

	TUNING SOLUTIONS Bluetooth Wireless CarPlay Box [pdf] User Manual Bluetooth Wireless CarPlay Box, Wireless CarPlay Box, CarPlay Box, Box
---	---

References

- [User Manual](#)

[Manuals+](#), [Privacy Policy](#)

This website is an independent publication and is neither affiliated with nor endorsed by any of the trademark owners. The "Bluetooth®" word mark and logos are registered trademarks owned by Bluetooth SIG, Inc. The "Wi-Fi®" word mark and logos are registered trademarks owned by the Wi-Fi Alliance. Any use of these marks on this website does not imply any affiliation with or endorsement.