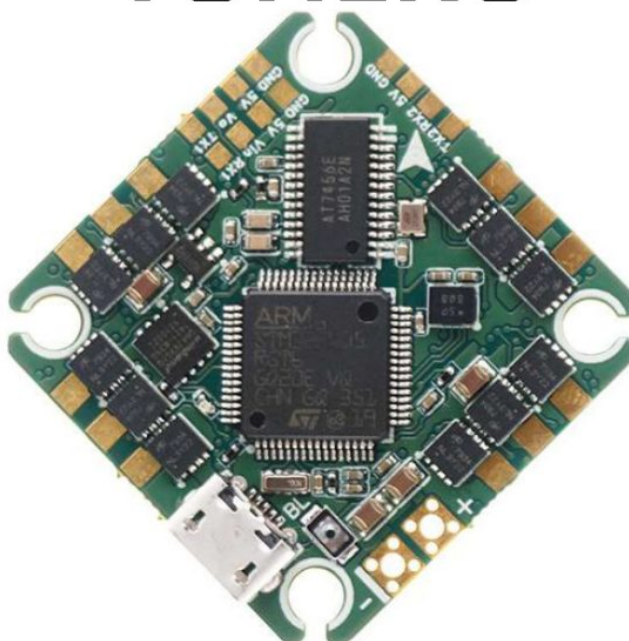

[Home](#) » [TUNERC](#) » **TUNERC F405 2S-4S AIO Blackbox and Current Meter Onboard Flight Controller Instruction Manual** 

TUNERC

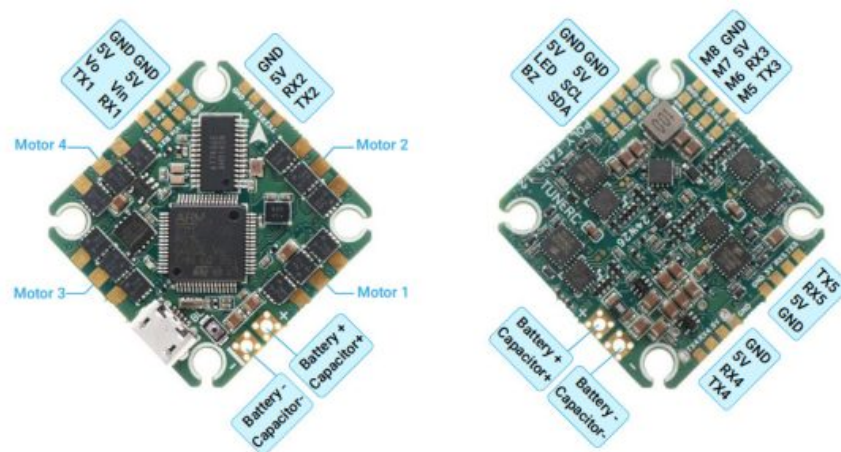


Wiring Diagram for Poly F405 2S-4S AIO V1.2

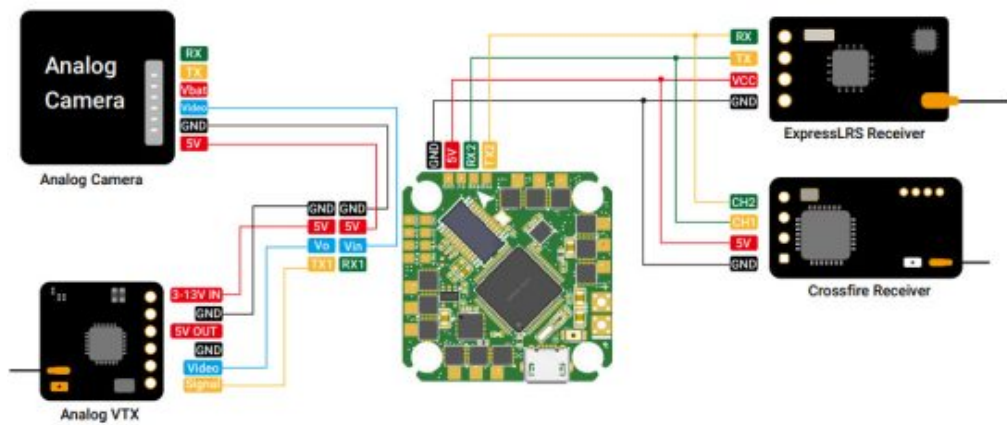
Contents [[hide](#)]

- 1 Pinout Diagram for Poly F405 V1.2
- 2 ELRS/ TBS Crossfire Receiver/ Analog System Wiring
- 3 GPS/ LED/Buzzer/SBUS Receiver Wiring
- 4 DJI O3 Wiring
- 5 Walksnail HD Avatar 1S VTX Wiring
- 6 HDZero Whoop Lite VTX Wiring
- 7 ELRS/ TBS Crossfire Receiver Betaflight Setup
- 8 SBUS Receiver Betaflight Setup
- 9 Analog VTX Betaflight Setup
- 10 DJI O3 and Walksnail Avatar HD 1S VTX Betaflight Setup
- 11 HD Zero Whoop Lite VTX Betaflight Setup
- 12 Documents / Resources
- 12.1 References

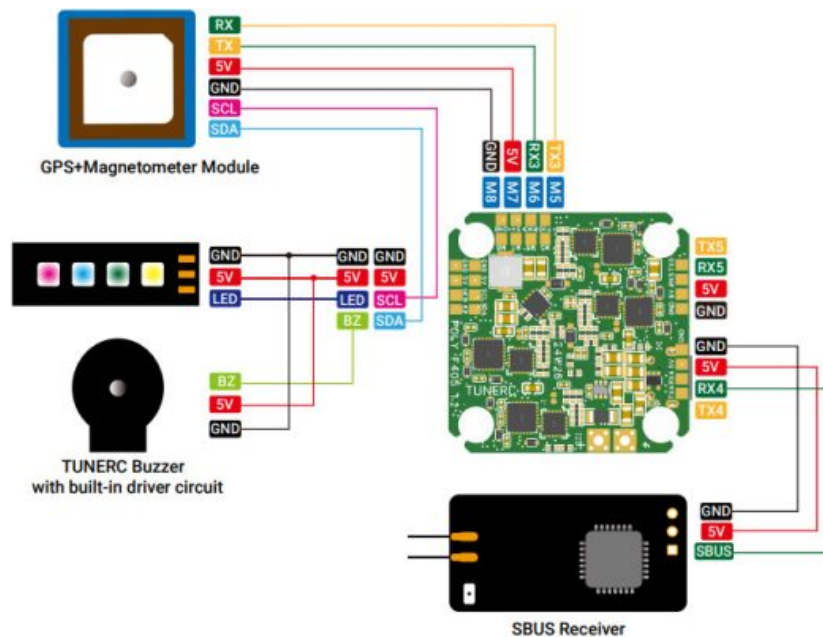
Pinout Diagram for Poly F405 V1.2



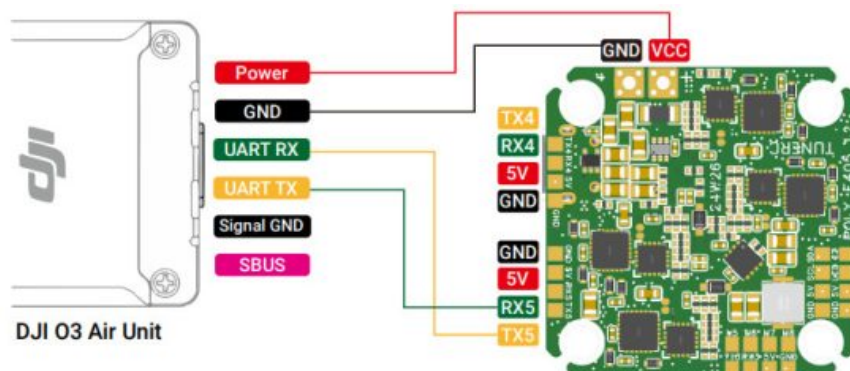
ELRS/ TBS Crossfire Receiver/ Analog System Wiring



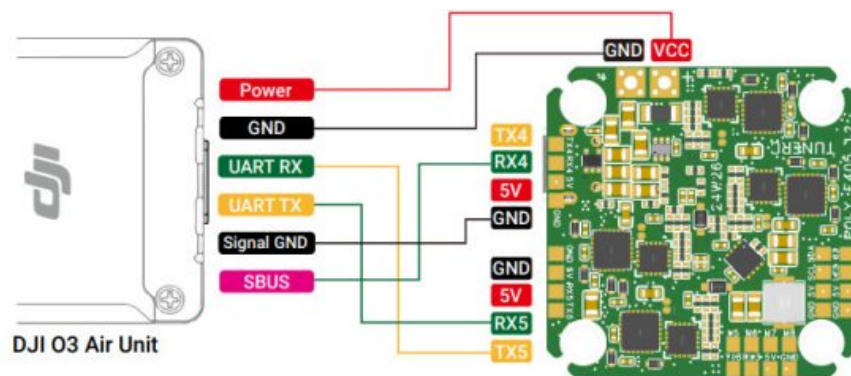
GPS/ LED/Buzzer/SBUS Receiver Wiring



DJI O3 Wiring

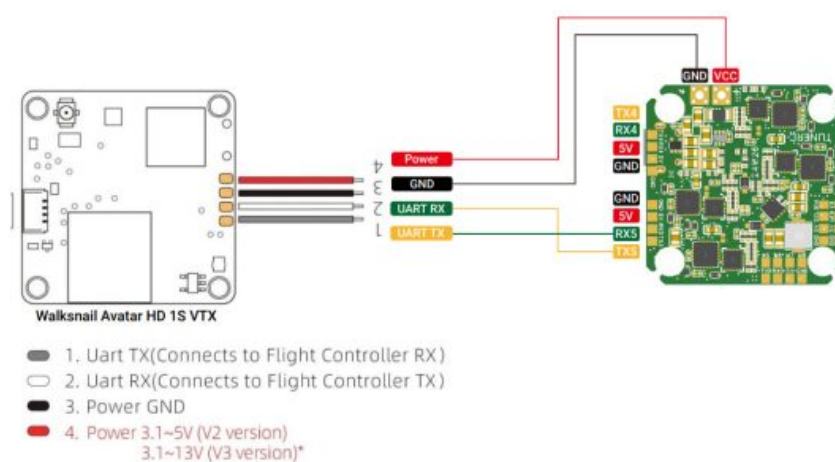


In general, you can wire the DJI O3 unit to any free UART on the Poly board. For users that don't use DJI radio controller, please refer to this diagram. You don't need to wire the "Signal GND" and "SBUS" wire from the DJI VTX plug.



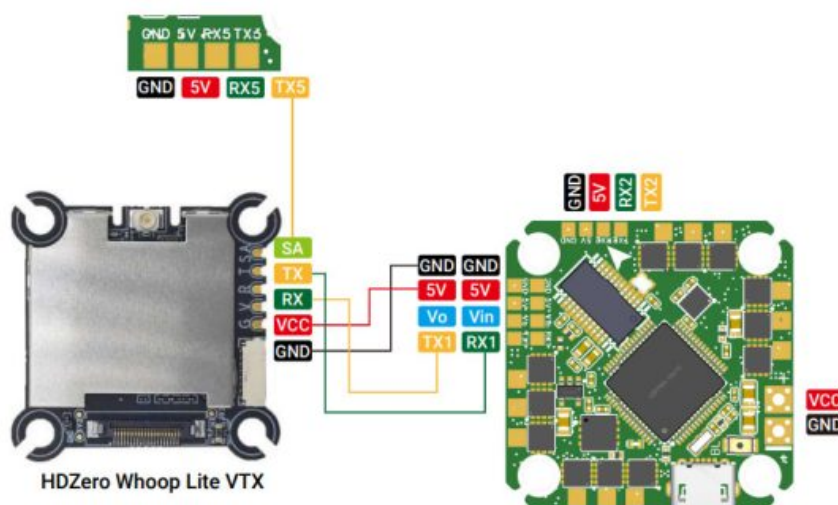
For users that use DJI radio controller, please refer to this diagram.

Walksnail HD Avatar 1S VTX Wiring



Please note that the V3 Avatar 1S VTX only supports 1s-3s battery input.

HDZero Whoop Lite VTX Wiring



Actually, you can wire HD Zero Whoop Lite VTX to any spare UART pads on Poly F405 board.

The wiring diagram above is only for reference.

ELRS/ TBS Crossfire Receiver Betaflight Setup

In Betaflight 4.5, under “Ports” tab, enable “Serial Rx” under corresponding uart you set for the RX.



Under “Receiver” tab, choose “Serial (via UART)” receiver mode and “CRSF” serial receiver provider.



SBUS Receiver Betaflight Setup

In Betaflight 4.5, under “Ports” tab, enable “Serial Rx” under corresponding uart you set for the RX.



Under “Receiver” tab, choose “Serial (via UART)” receiver mode and “SBUS” serial receiver provider.



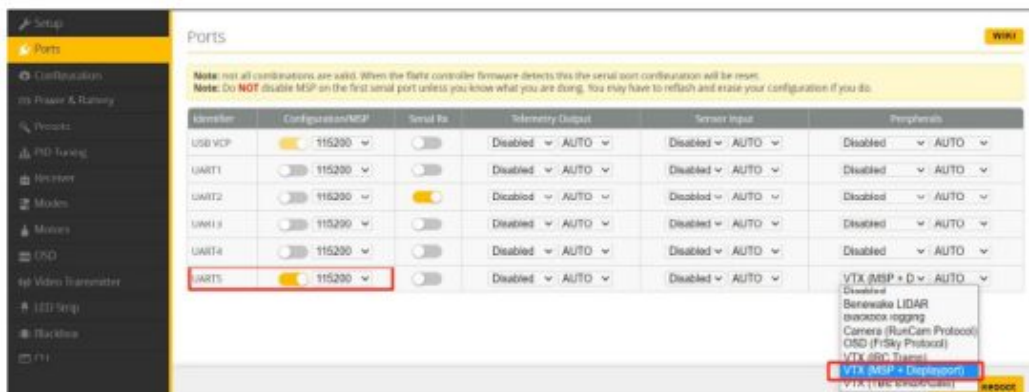
Analog VTX Betaflight Setup

In Betaflight 4.5, under “Ports” tab, choose “VTX (TBS Smart Audio)” under corresponding uart you set for the analog VTX.

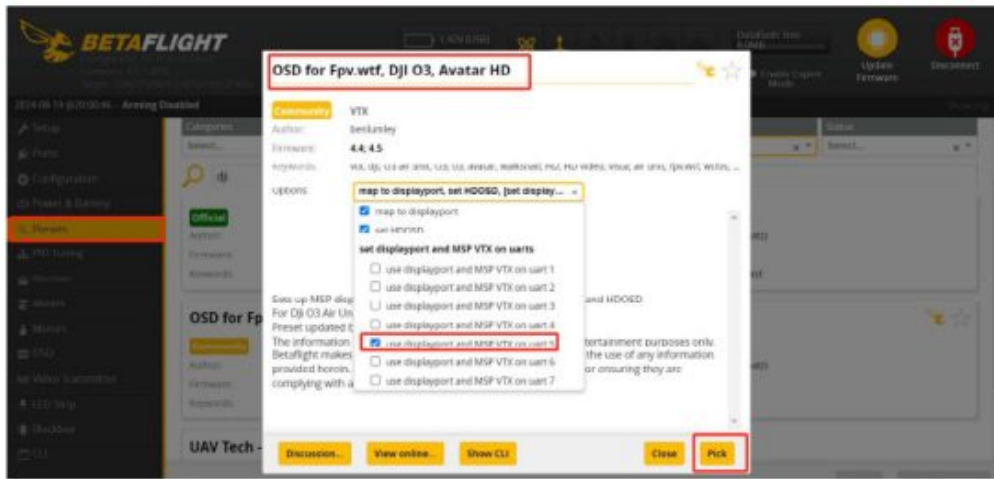


DJI O3 and Walksnail Avatar HD 1S VTX Betaflight Setup

1. In Betaflight 4.5, under “Ports” tab, please enable “Configuration MSP” and choose “VTX (MSP + Display port)” for corresponding UART you set for DJI O3 VTX.

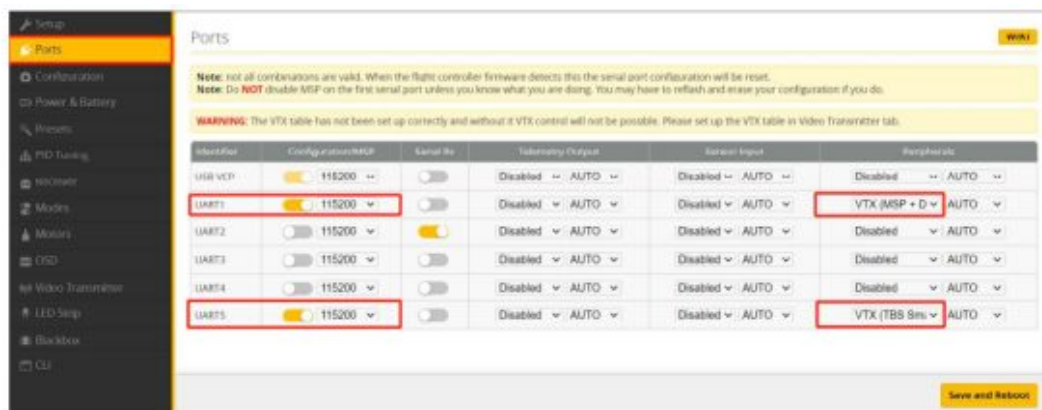


1.2. Under “Presets” tab, search DJI OSD, select “OSD for Fpv. wtf, DJI O3, Avatar HD ” and select the corresponding uart you set for the DJI VTX under “Options”, finally click “Pick”

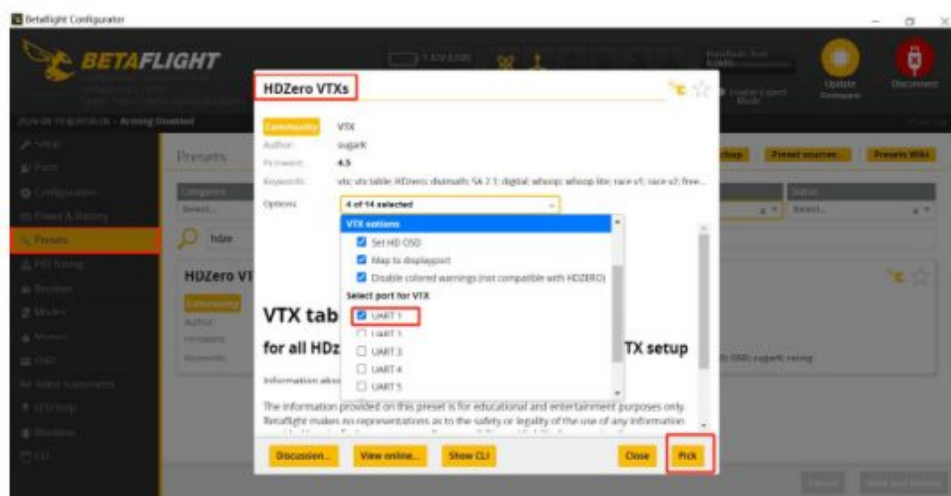


HD Zero Whoop Lite VTX Betaflight Setup

1. In Betaflight 4.5, under "Ports" tab, please enable "Configuration MSP" and choose "VTX (MSP + Display port)" for corresponding UART
2. To setup smart audio in Betaflight 4.5, please choose "VTX (Smart audio)" under "Peripherals" for the corresponding UART.




3. Under "Presets" tab, search "HD Zero VTXs" and select the corresponding UART you set for the HD Zero VTX under "Options", finally click "Pick"



TUNERC

Documents / Resources

	<p>TUNERC F405 2S-4S AIO Blackbox and Current Meter Onboard Flight Controller [pdf] Instruction Manual</p> <p>F405 2S-4S AIO, F405 2S-4S AIO Blackbox and Current Meter Onboard Flight Controller, Blackbox and Current Meter Onboard Flight Controller, Meter Onboard Flight Controller, Onboard Flight Controller, Flight Controller</p>
---	--

References

- [User Manual](#)

📁 TUNERC

🔍 Blackbox and Current Meter Onboard Flight Controller, F405 2S-4S AIO, F405 2S-4S AIO Blackbox and Current Meter Onboard Flight Controller, Flight Controller, Meter Onboard Flight Controller, Onboard Flight Controller, TUNERC

Leave a comment

Your email address will not be published. Required fields are marked *

Comment *

Name

Email

Website

☐ Save my name, email, and website in this browser for the next time I comment.

Post Comment

Search:

e.g. whirlpool wrf535swhz

Search

[Manuals+](#) | [Upload](#) | [Deep Search](#) | [About Us](#) | [Privacy Policy](#) | [@manuals.plus](#) | [YouTube](#) | [LinkedIn](#) | [FaceBook](#)

This website is an independent publication and is neither affiliated with nor endorsed by any of the trademark owners. The "Bluetooth®" word mark and logos are registered trademarks owned by Bluetooth SIG, Inc. The "Wi-Fi®" word mark and logos are registered trademarks owned by the Wi-Fi Alliance. Any use of these marks on this website does not imply any affiliation with or endorsement.