



[Home](#) » [Tumama](#) » **Tumama TM392 Interactive Plush Walking Cat Toy Instruction Manual** 

Contents [[hide](#)]

- [1 Tumama TM392 Interactive Plush Walking Cat Toy](#)
- [2 Battery installation](#)
- [3 NOT SUITABLE FOR CHILDREN UNDER 3 YEARS](#)
- [4 Documents / Resources](#)
 - [4.1 References](#)



Tumama TM392 Interactive Plush Walking Cat Toy



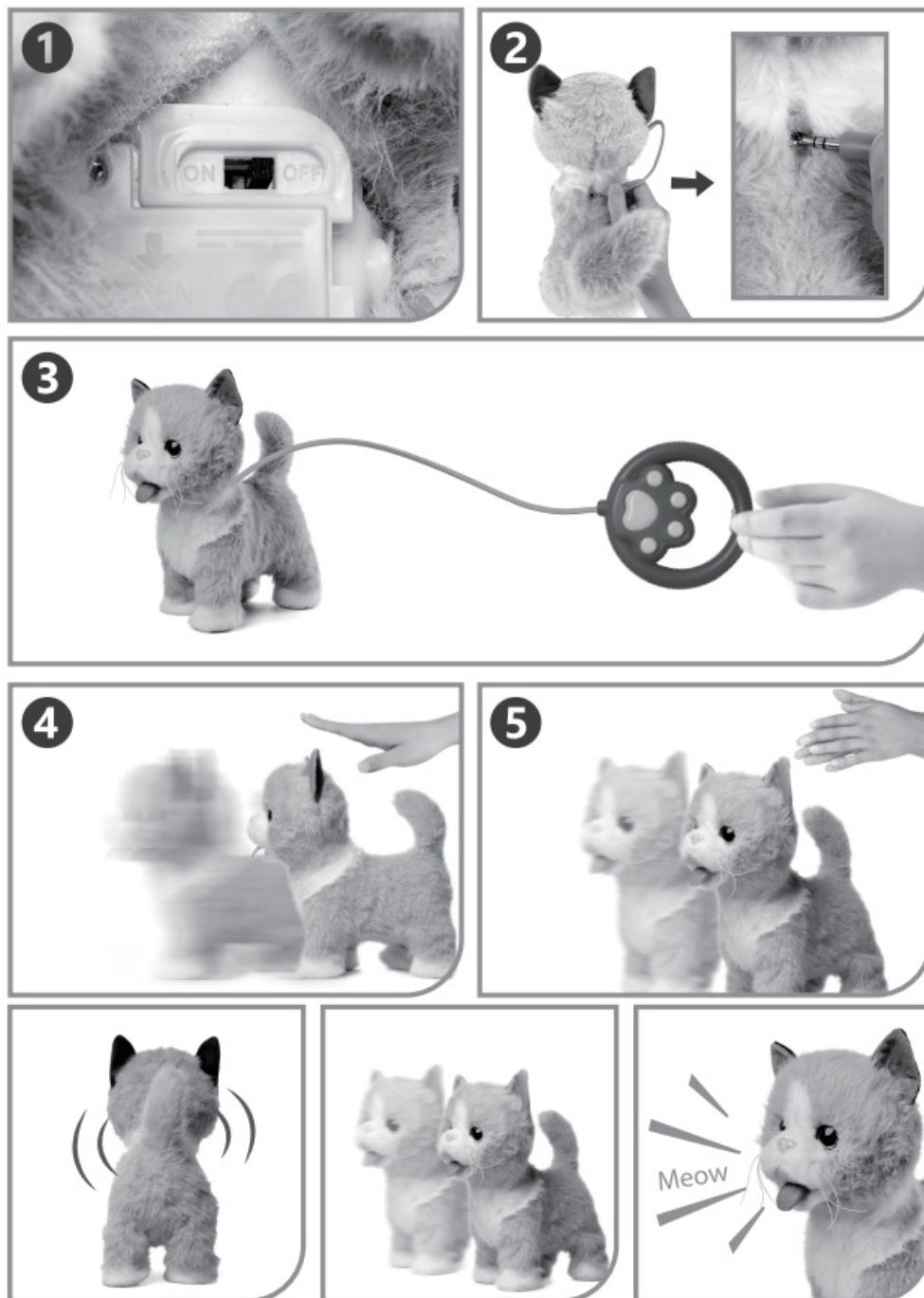
Battery installation

Powered by 3x AA batteries



- (Not included in the package)

PRODUCT OVERVIEW



1. Switch ON / OFF
2. Connect the remote control
3. Remote control switches to control toy activities (only one button)
4. Touch head control
5. Clap control

NOT SUITABLE FOR CHILDREN UNDER 3 YEARS

- **COUNTRY OF ORIGIN: CHINA**



WARNING

CHOKING HAZARD – Small Parts.



Not for children under 3 years.

Hey

I'm Tumama!

Baby's joy for a better future.

We'd like to hear from you.

Do you have any suggestions for our product?

Please let us know.

Email: support@tumama-kids.com


Tumama-kids.com



Tumama Kids Care (ShenZhen) Company Limited

All Rights Reserved.

Documents / Resources

 کتاب 说明书 Handbuch Instructions Manual Manuel 取扱説明書 說明書 Handledning Podręcznik Manual Руководство Instruktioner Manual <small>Model: TM392/2025 LOT NO.: A95207429-105-X</small>	<p>Tumama TM392 Interactive Plush Walking Cat Toy [pdf] Instruction Manual</p> <p>TM392 Interactive Plush Walking Cat Toy, TM392, Interactive Plush Walking Cat Toy, Plush Walking Cat Toy, Walking Cat Toy, Cat Toy</p>
--	--

References

- [User Manual](#)

■ Tumama

🐾 Cat Toy, Interactive Plush Walking Cat Toy, Plush Walking Cat Toy, TM392, TM392 Interactive Plush Walking Cat Toy, Tumama, Walking Cat Toy

—Previous Post

[Tumama TM213 Rail Trace Set Instruction Manual](#)

Next Post—

[Tumama TM388 Timer Box User Manual](#)

Leave a comment

Your email address will not be published. Required fields are marked *

Comment *

Name

Email

Website

☐ Save my name, email, and website in this browser for the next time I comment.

Post Comment

Search:

Search

This website is an independent publication and is neither affiliated with nor endorsed by any of the trademark owners. The "Bluetooth®" word mark and logos are registered trademarks owned by Bluetooth SIG, Inc. The "Wi-Fi®" word mark and logos are registered trademarks owned by the Wi-Fi Alliance. Any use of these marks on this website does not imply any affiliation with or endorsement.