

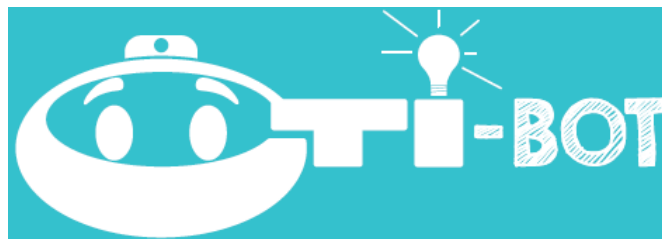


## tts Oti-Bot Classroom Robotics User Guide

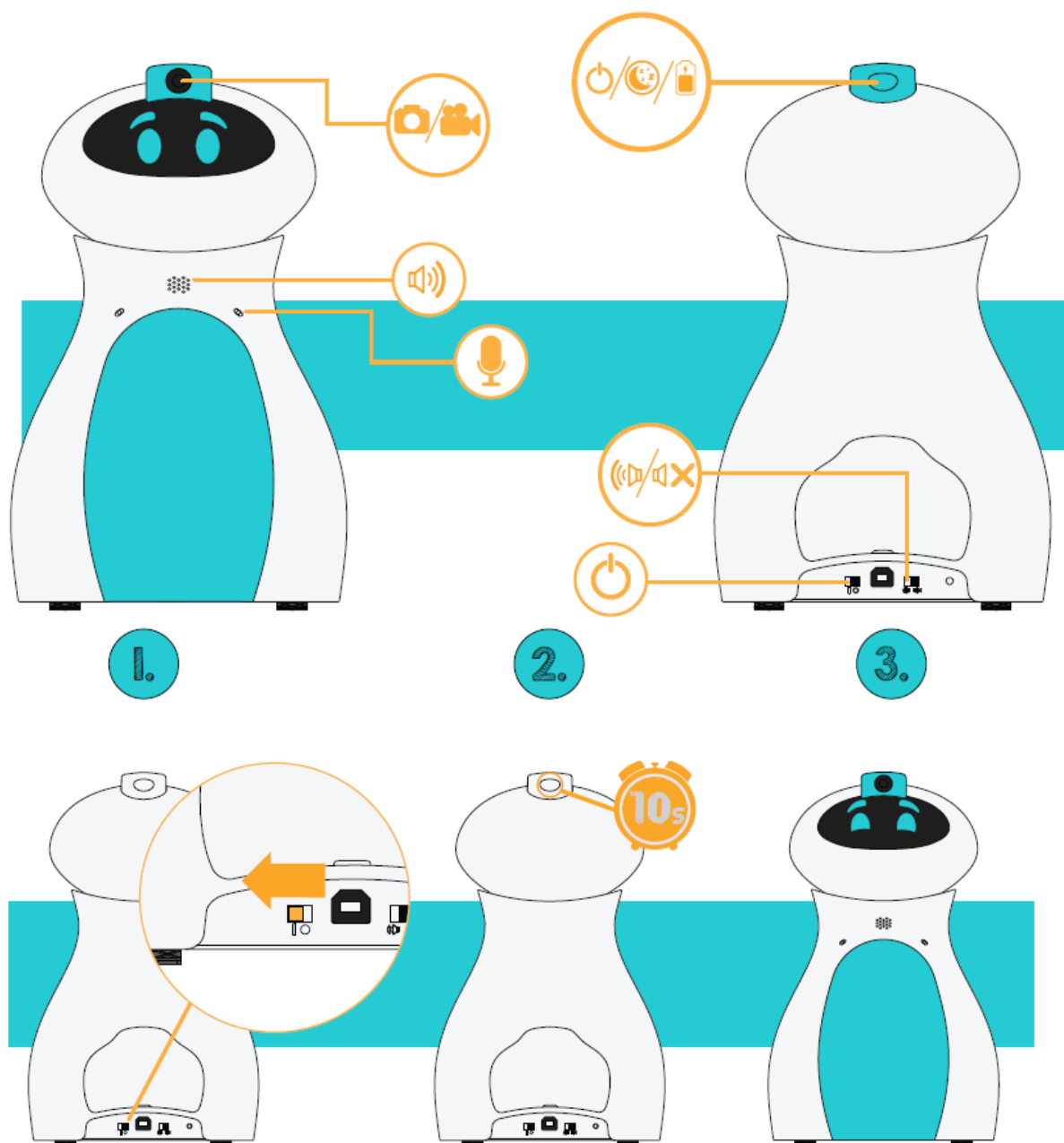
[Home](#) » [tts](#) » tts Oti-Bot Classroom Robotics User Guide 

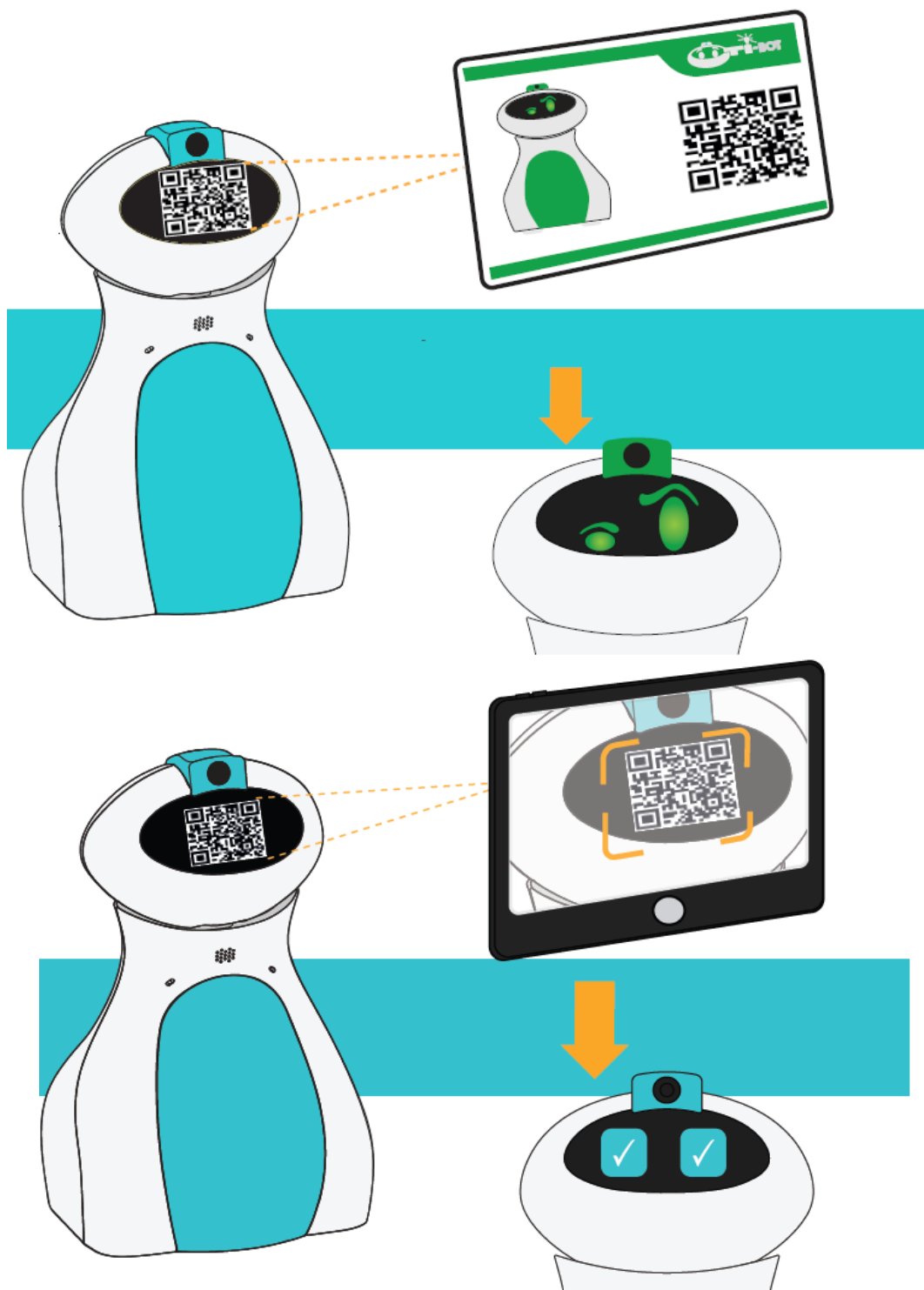
### Contents

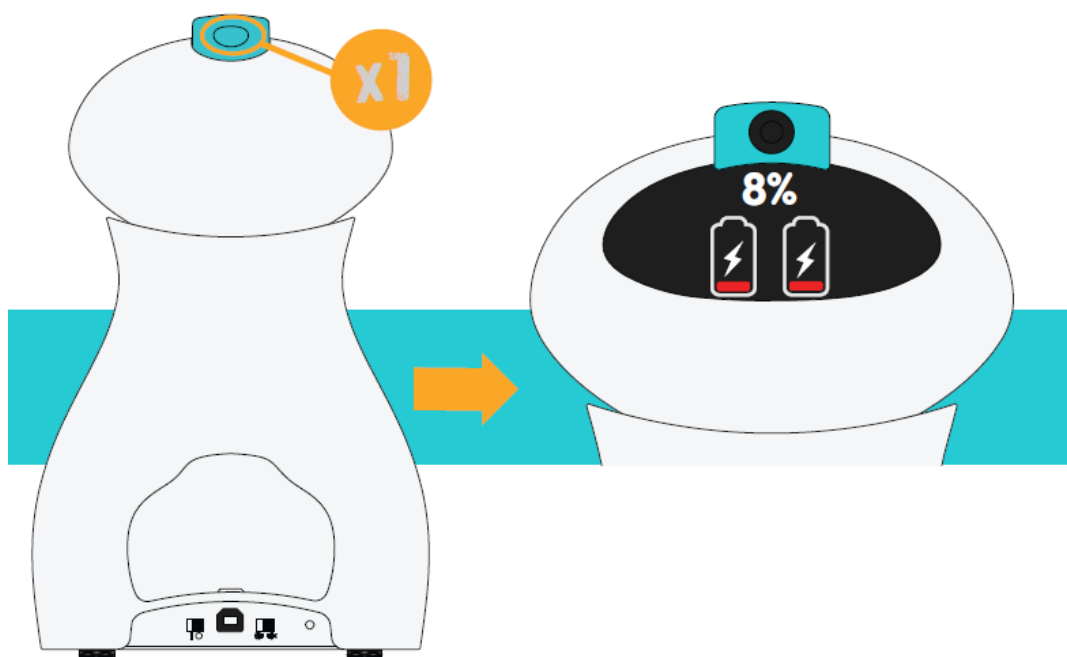
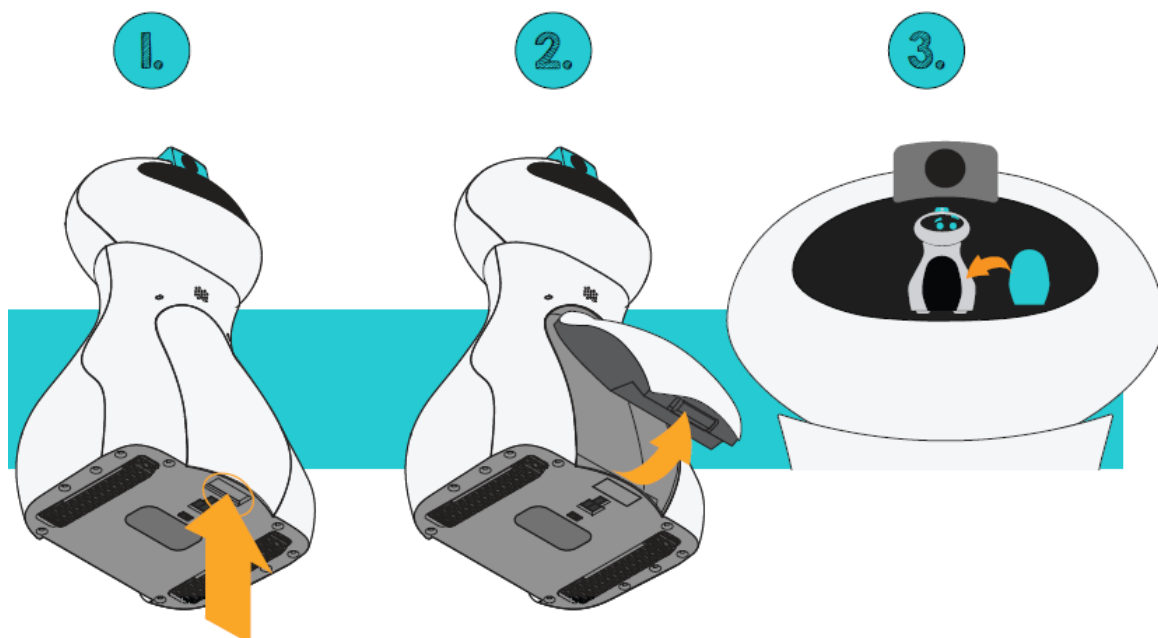
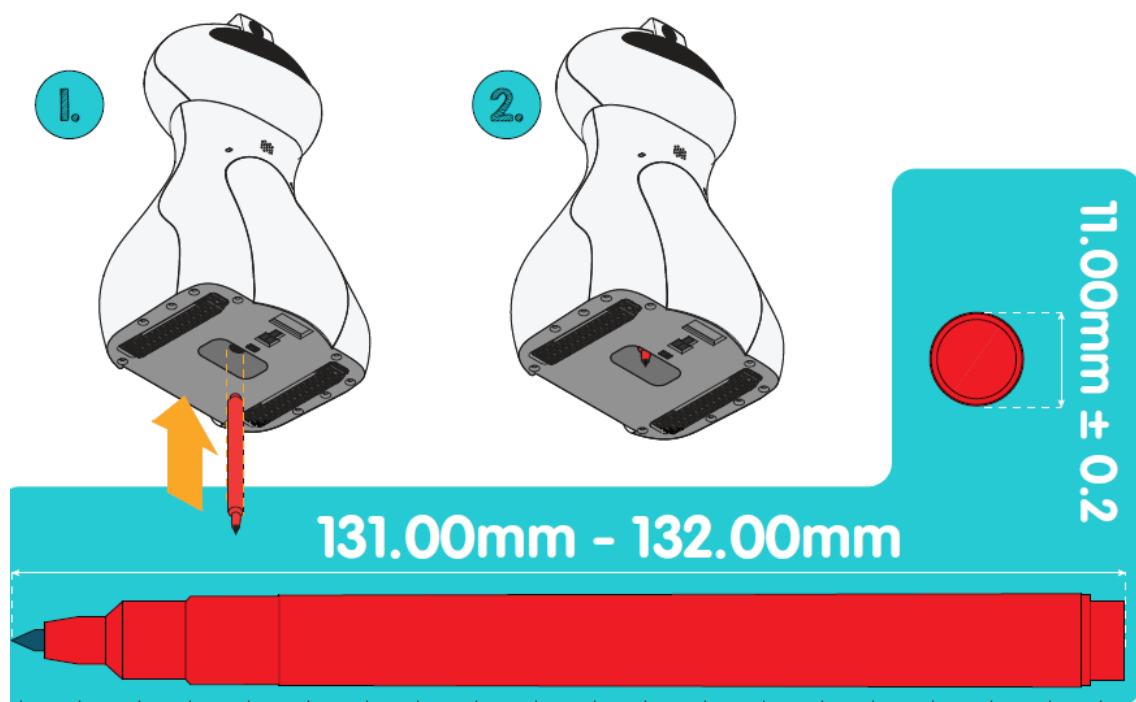
- 1 [tts Oti-Bot Classroom Robotics](#)
- 2 [WEEE Statements](#)
- 3 [Directive 2014/53/EU Statements](#)
- 4 [EU Conformity Statements](#)
- 5 [Charging Cable Statements](#)
- 6 [Rechargeable Batteries Statements](#)
  - 6.1 [Battery Replacement](#)
- 7 [FCC Statements](#)
- 8 [More Information At...](#)
- 9 [Documents / Resources](#)
  - 9.1 [References](#)
- 10 [Related Posts](#)

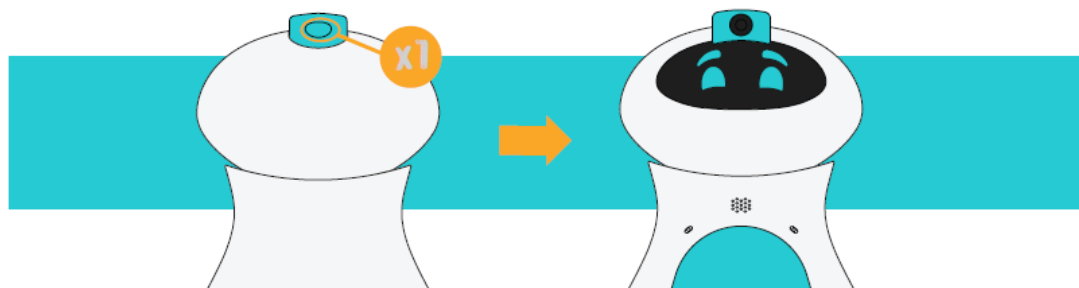
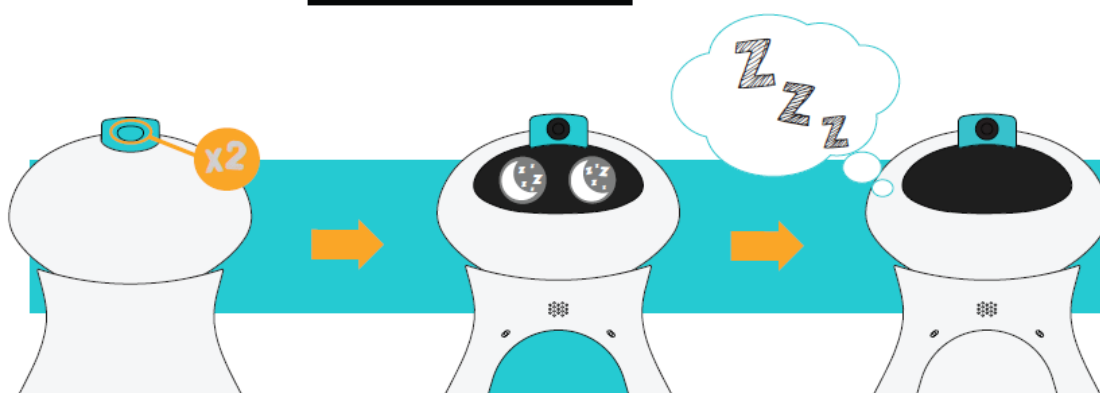
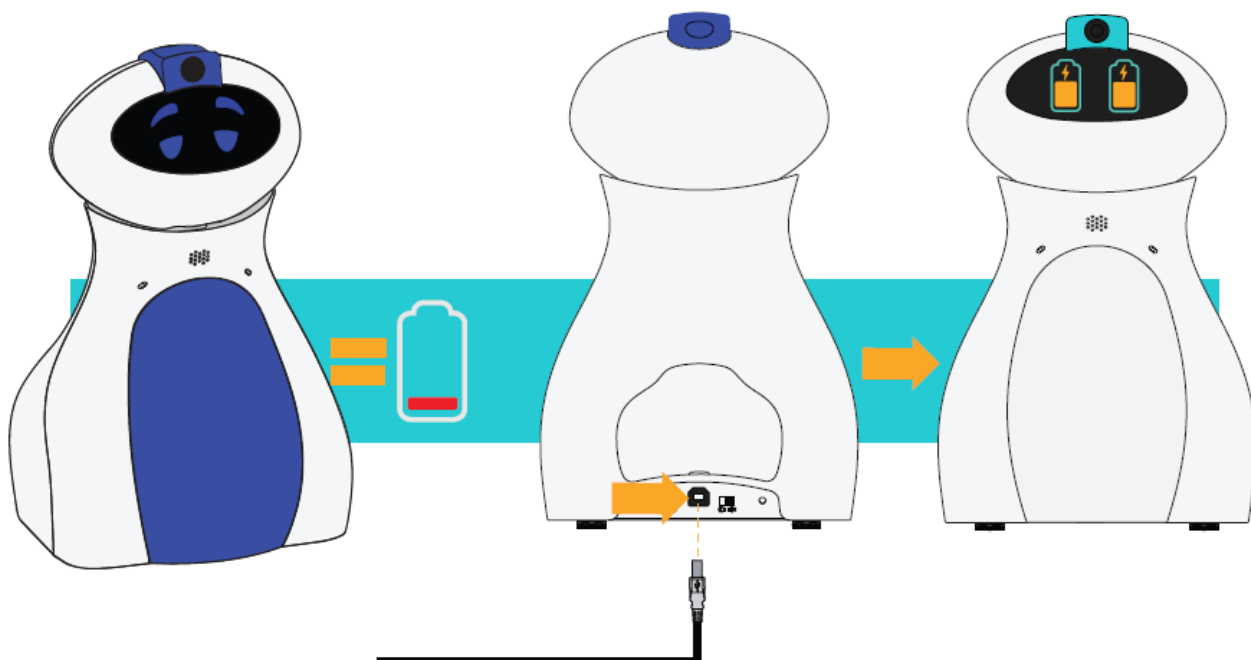


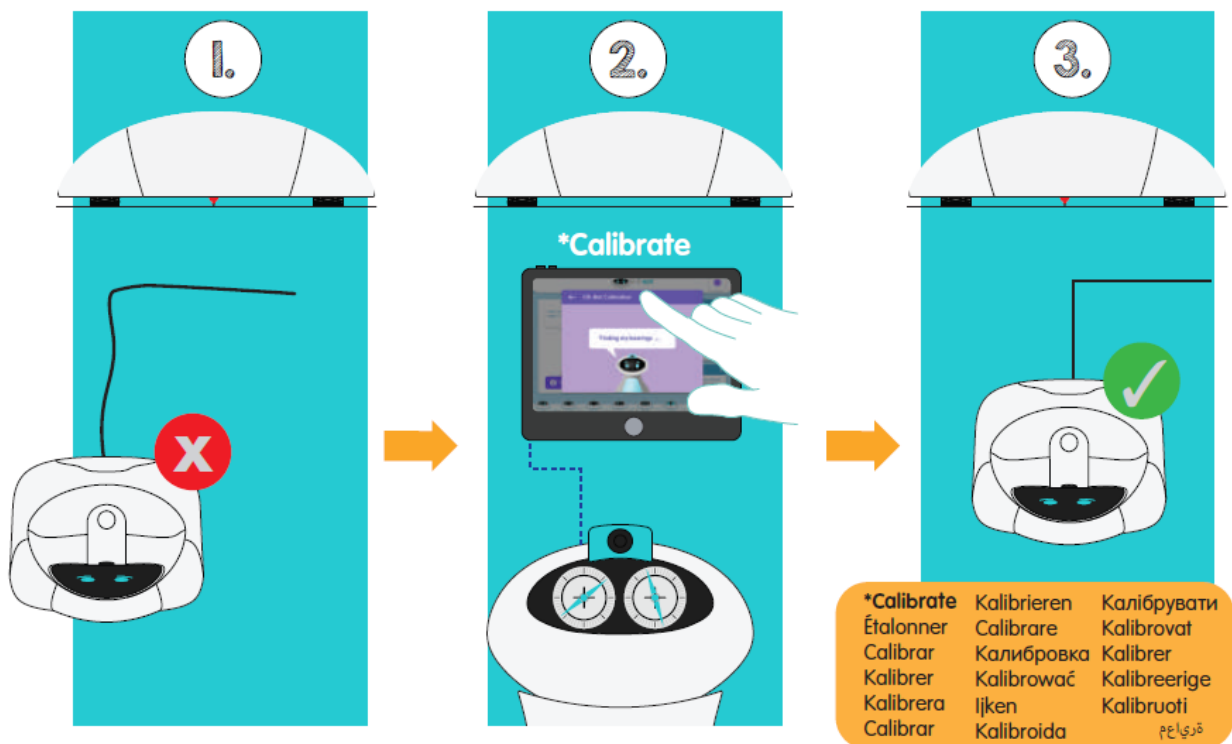
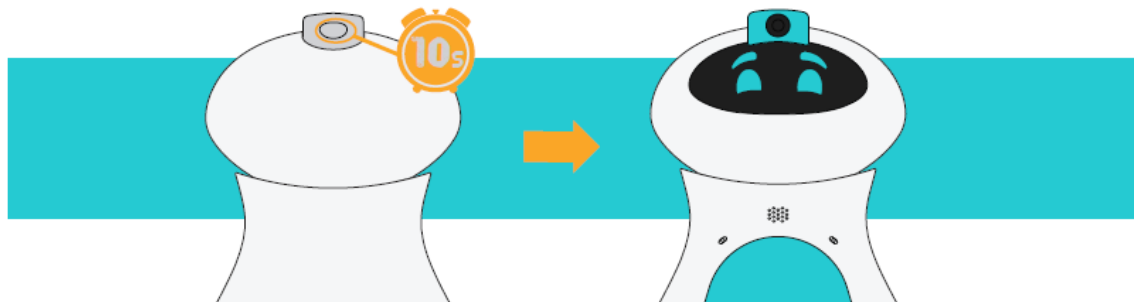
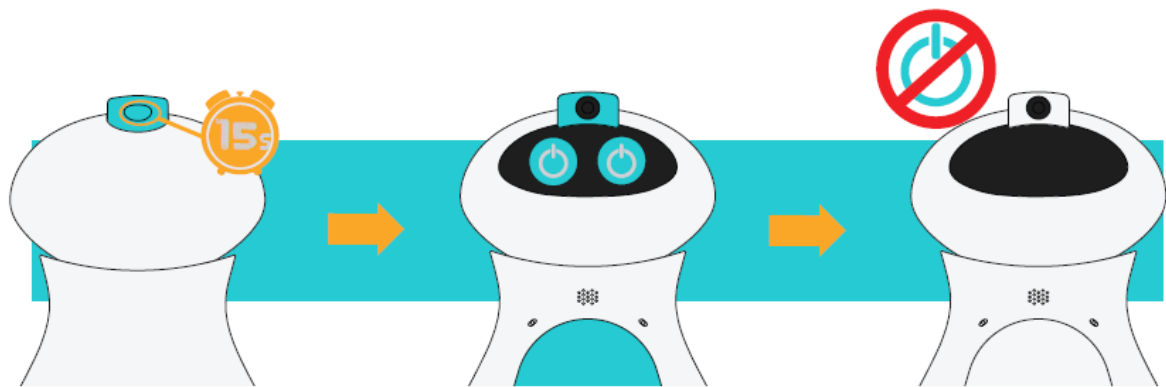
**tts Oti-Bot Classroom Robotics**

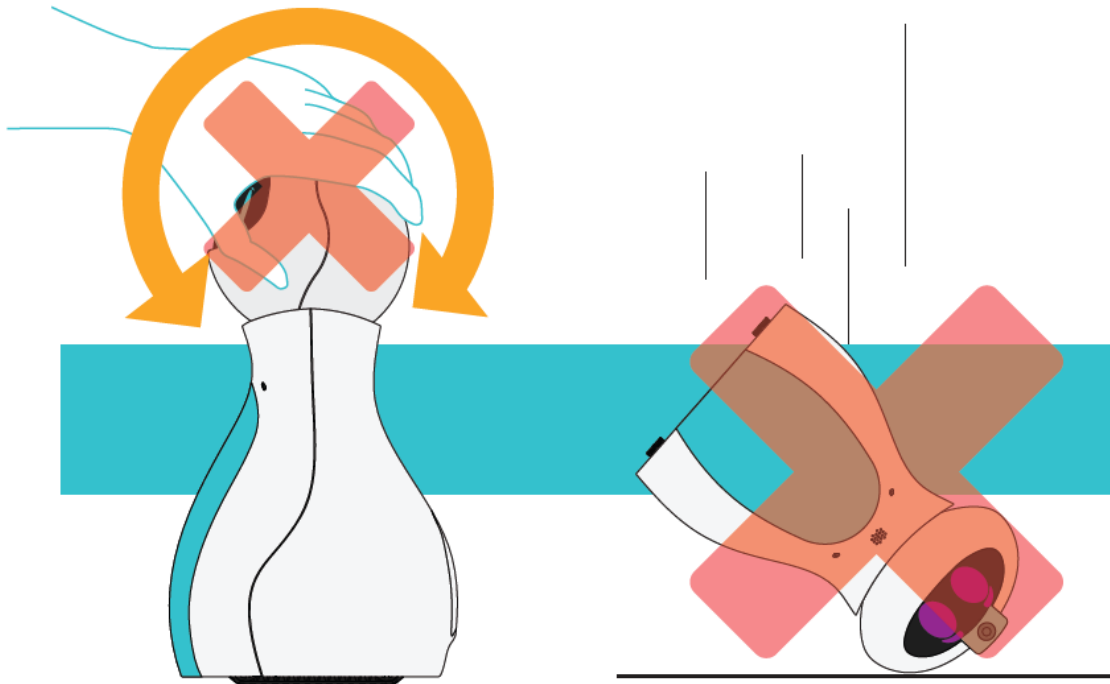












## **WEEE Statements**

Waste Electrical and Electronics Equipment (WEEE) – When this appliance is out of use, please remove all batteries and dispose of them separately. Bring electrical appliances to the local collecting points for waste electrical and electronic equipment. Other components can be disposed of in domestic refuse.

## **Directive 2014/53/EU Statements**

RM Resources hereby declare that this wireless device – IT10287 Oti-Bot is in compliance with Directive 2014/53/EU.

## **EU Conformity Statements**

The full text of the EU declaration of conformity is available at the following internet address – <https://www.tts-group.co.uk/DoCs.html>

## **Charging Cable Statements**

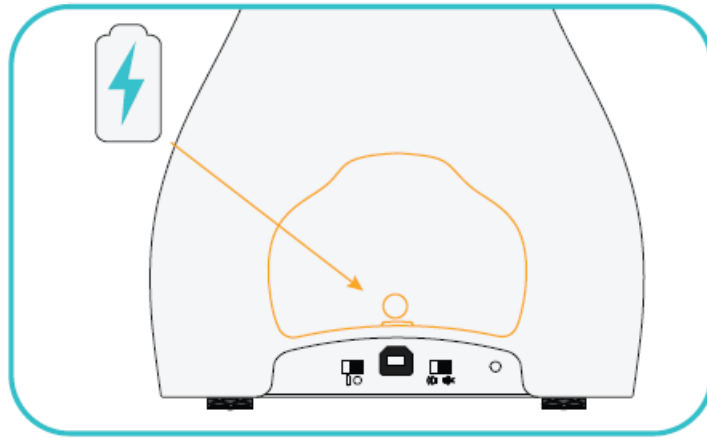
Chargers used with the toy are to be regularly examined for damage to the cord, plug, enclosure and other parts, and that, in the event of such damage, the toy must not be used with the charger until the damage has been repaired. Under the environment with electrostatic discharge, the toy may malfunction and require user to reset the toy. Please remove the USB cable after charging and keep away from children.

## **Rechargeable Batteries Statements**

For electric toys using rechargeable batteries, the batteries should be charged under adult supervision.

## **Battery Replacement**

To replace the batteries, remove the battery hatch cover with a screwdriver and responsibly dispose of any exhausted batteries. Insert new batteries, following the polarity marking on the product.



## Battery Information

- Batteries are to be inserted with the correct polarity.
- The supply terminals are not to be short circuited.
- Only batteries of equal size and type should be used.
- Non-rechargeable batteries are not to be recharged.
- Do not mix different types, or old and new batteries.
- Replacement of batteries should only be performed by an adult, and all batteries should be stored out of reach of children.
- Please ensure batteries are removed from the product before storage.

## FCC Statements

This device complies with part 15 of the FCC Rules.  
Operation is subject to the following two conditions:

1. This device may not cause harmful interference, and
2. This device must accept any interference received, including interference that may cause undesired operation.

**Note:** This equipment has been tested and found to comply with the limits for a Class B digital device, pursuant to part 15 of the FCC Rules. These limits are designed to provide reasonable protection against harmful interference in a residential installation. This equipment generates, uses, and can radiate radio frequency energy and, if not installed and used in accordance with the instructions, may cause harmful interference to radio communications. However, there is no guarantee that interference will not occur in a particular installation.

If this equipment does cause harmful interference to radio or television reception, which can be determined by turning the equipment off and on, the user is encouraged to try to correct the interference by one or more of the following measures:

- Reorient or relocate the receiving antenna.
- Increase the separation between the equipment and receiver.
- Connect the equipment to an outlet on a circuit different from that to which the receiver is connected.
- Consult the dealer or an experienced radio/TV technician for help.

## USB Statements

This toy is only to be connected to equipment bearing either of the following symbols.



Please retain this manual as it contains important information. If necessary, wipe the product gently with a clean damp cloth.

## More Information At...

[www.tts-group.co.uk](http://www.tts-group.co.uk)


### RM Resources

Building 1  
Heyworth Road  
Hucknall,  
NG15 6XJ, UK  
Papendorp Park  
Papendorpseweg 100  
Utrecht 3528 BJ  
Netherlands  
Fax: 0800 137 525  
Tel: 0800 138 1370

To maintain compliance with FCC's RF Exposure guidelines, This equipment should be installed and operated with minimum distance between 20cm the radiator your body: Use only the supplied antenna. Changes or modifications not expressly approved by the party responsible for compliance could void the user's authority to operate the equipment.

Battery: Li-Ion (21700); 3.6V, 5000mAh  
FCC ID – 2ADRE-IT10287  
Recommended 5V/1A Charger  
Made in China on behalf of RM Resources  
**Product Code: IT10287**

## Documents / Resources

	<a href="#">tts Oti-Bot Classroom Robotics</a> [pdf] User Guide IT10287, 2ADRE-IT10287, 2ADREIT10287, Oti-Bot, Classroom Robotics, Oti-Bot Classroom Robotics
---	--

## References

- [TTS | School Supplies for Primary, Secondary & Early Years](#)
- [DoCs](#)