



tts EL00389 Big-Point Recordable Button User Guide

[Home](#) » [tts](#) » tts EL00389 Big-Point Recordable Button User Guide 

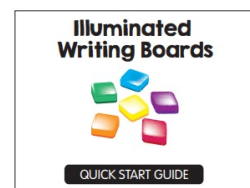
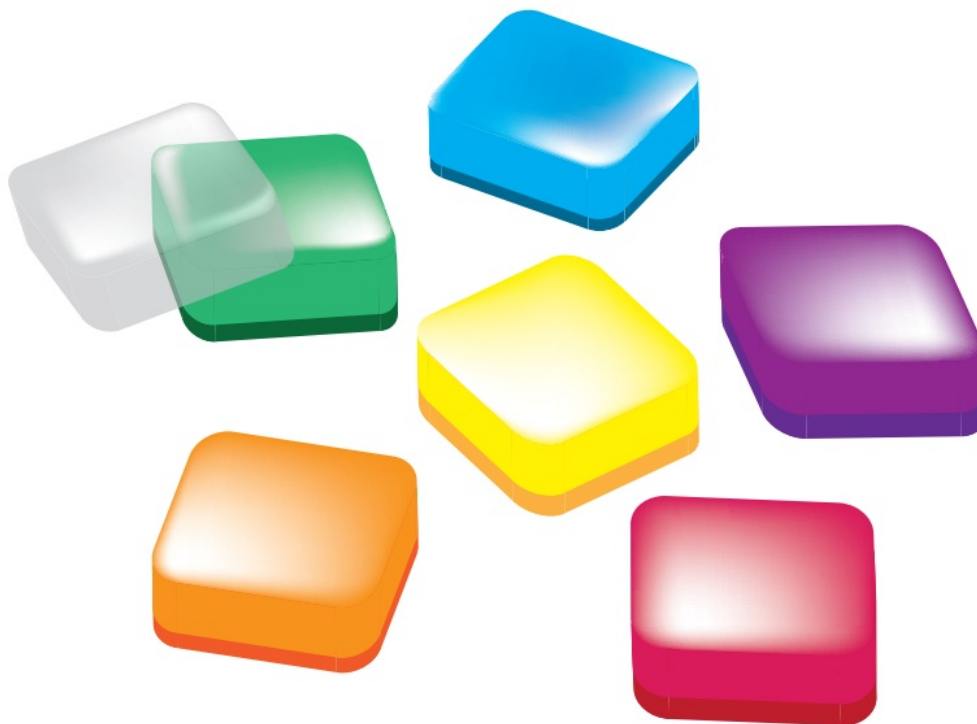
tts EL00389 Big-Point Recordable Button User Guide



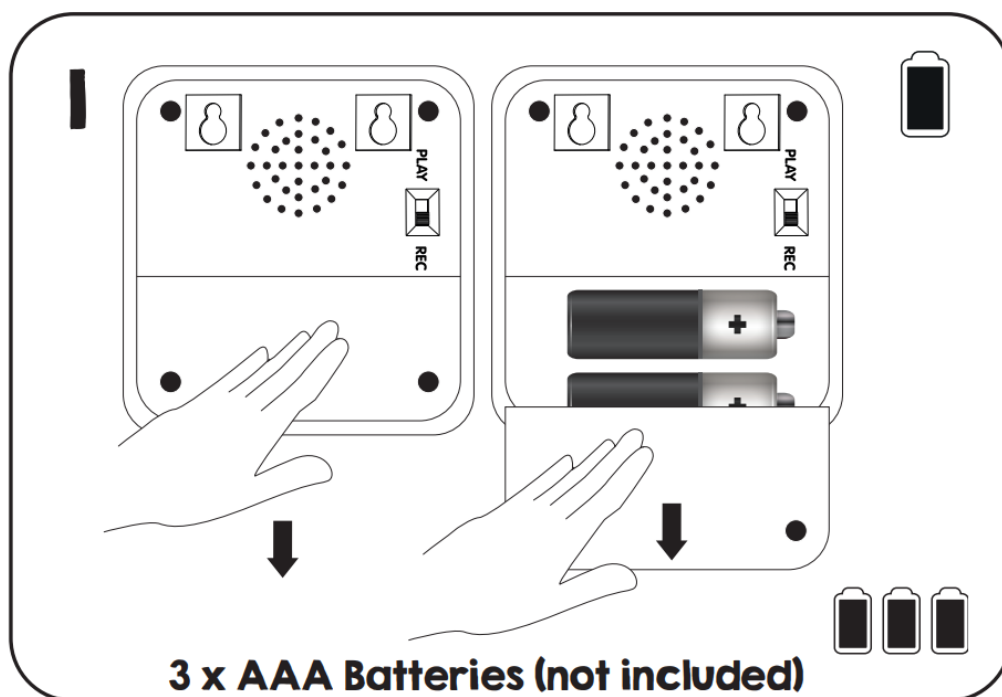
Contents

- [1 WHAT'S IN THE BOX?](#)
- [2 Battery Replacement](#)
- [3 Battery Information](#)
- [4 FCC Statements](#)
- [5 Instructions](#)
- [6 Documents / Resources](#)
 - [6.1 References](#)
- [7 Related Posts](#)

WHAT'S IN THE BOX?



Battery Replacement



- To replace the batteries, remove the battery hatch cover with a screwdriver and responsibly dispose of any exhausted batteries.
- Insert new batteries, following the polarity marking on the product. This toy contains batteries that are replaceable.

Battery Information

Battery Information

- Batteries are to be inserted with the correct polarity.
- The supply terminals are not to be short circuited.
- Only batteries of equal size and type should be used.
- Non-rechargeable batteries are not to be recharged.
- Do not mix different types, or old and new batteries.
- Replacement of batteries should only be performed by an adult, and all batteries should be stored out of reach of children.
- Please ensure batteries are removed from the product before storage.
- Exhausted batteries are to be removed from the toy.

For electric toys using rechargeable batteries, the batteries should be charged under adult supervision

Warning

For electric toys using rechargeable batteries, the batteries should be charged under adult supervision.

FCC Statements

This device complies with part 15 of the FCC Rules.
Operation is subject to the following two conditions:

1. this device may not cause harmful interference, and
2. this device must accept any interference received, including interference that may cause undesired operation.

Note: This equipment has been tested and found to comply with the limits for a Class B digital device, pursuant to part 15 of the FCC Rules.

These limits are designed to provide reasonable protection against harmful interference in a residential installation.

This equipment generates, uses, and can radiate radio frequency energy and, if not installed and used in accordance with the instructions, may cause harmful interference to radio communications. However, there is no guarantee that interference will not occur in a particular installation.

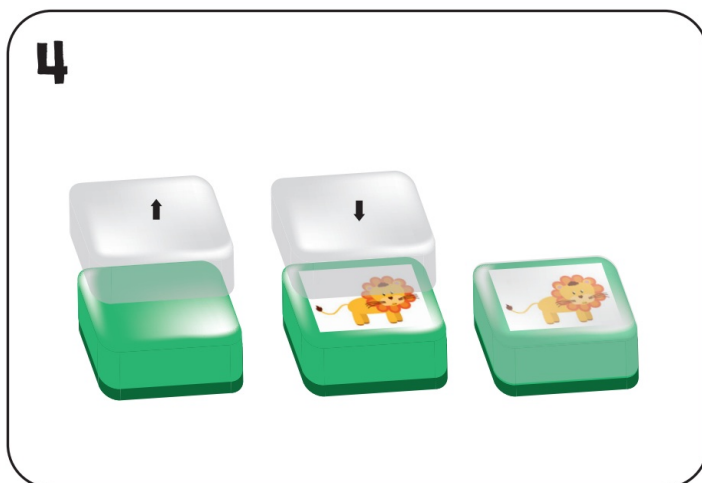
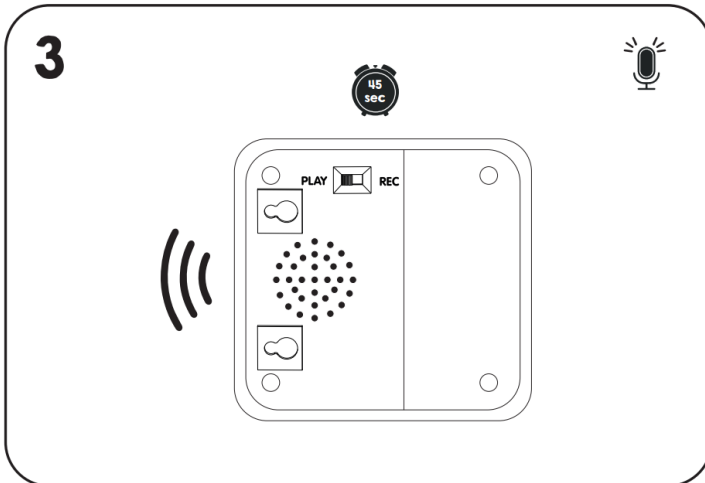
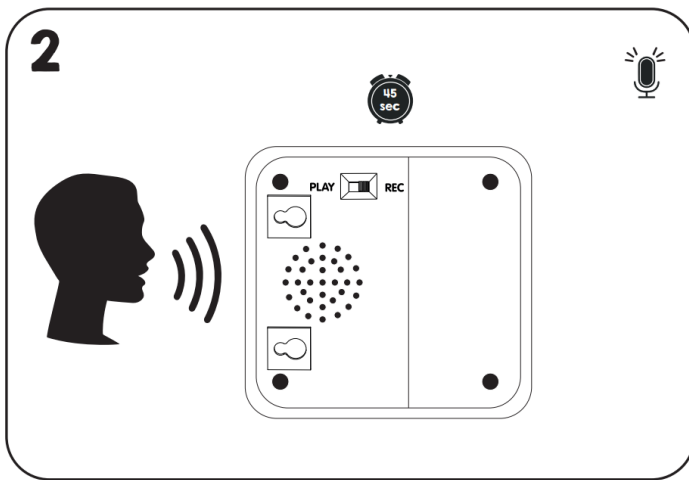
If this equipment does cause harmful interference to radio or television reception, which can be determined by turning the equipment off and on, the user is encouraged to try to correct the interference by one or more of the following measures:

- Reorient or relocate the receiving antenna.
- Increase the separation between the equipment and receiver.
- Connect the equipment to an outlet on a circuit different from that to which the receiver is connected.
- Consult the dealer or an experienced radio/TV technician for help.

Please retain this manual as it contains important information

The full text of the EU declaration of conformity is available at the following internet address – <https://www.tts-group.co.uk/DoCs.html>

Instructions



More Information At
www.tts-group.co.uk

RM Resources

Building 1
Heyworth Road
Hucknall, Nottingham
NG15 6XJ, UK

RM Resources

Papendorp Park
Papendorpseweg 100
Utrecht 3528 BJ
Netherlands

Tel: 0800 138 1370 Fax: 0800 137 525



TTS Product Code: EL00389



Made in China on behalf of **RM** plc

Documents / Resources

A thumbnail image of the user guide for the EL00389 Big-Point Recordable Button. It shows a grid of icons and text, including 'Big-Point Recordable Button', 'WHAT'S IN THE BOX?', and 'More Information At...'. It also features a 'MY NOTES' section with a grid of boxes.	<p>tts EL00389 Big-Point Recordable Button [pdf] User Guide</p> <p>EL00389 Big-Point Recordable Button, EL00389, Big-Point Recordable Button</p>
--	--

References

- [TTS | School Supplies for Primary, Secondary & Early Years](#)
- [DoCs](#)

[Manuals+](#).