



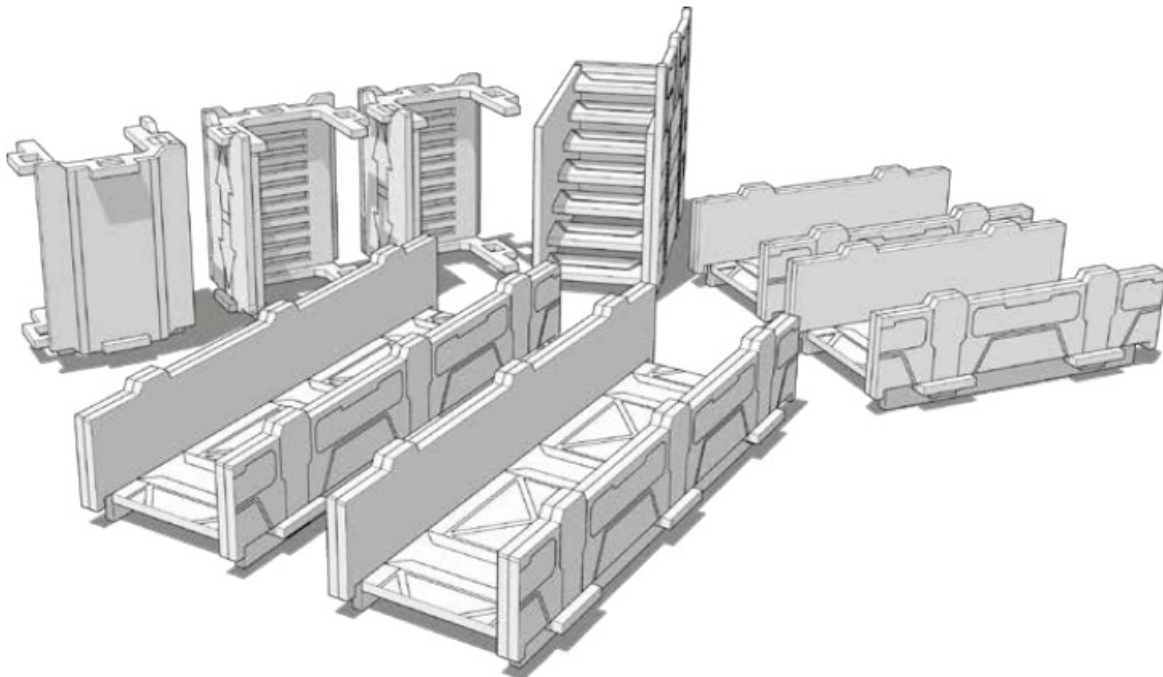
TTCOMBAT TTSCW-SFU-157 Slab Streets Access points and Walkways Instruction Manual

[Home](#) » [TTCOMBAT](#) » TTCOMBAT TTSCW-SFU-157 Slab Streets Access points and Walkways Instruction Manual 



TABLETOP SCENICS

TTSCW-SFU-157
Slab Streets
Access points and Walkways



These are a series of icons that may be used throughout the instructions to help your assembly.
If in doubt, scroll ahead to confirm.



Do not glue this part



Carefully score and fold this part



This part - or its placement is completely optional



Look closely at this step -
The process order or part used, may be specific



Repeat making this part
the specified number of times



The next instruction step
will be the same assembly
so far, but from a different
angle



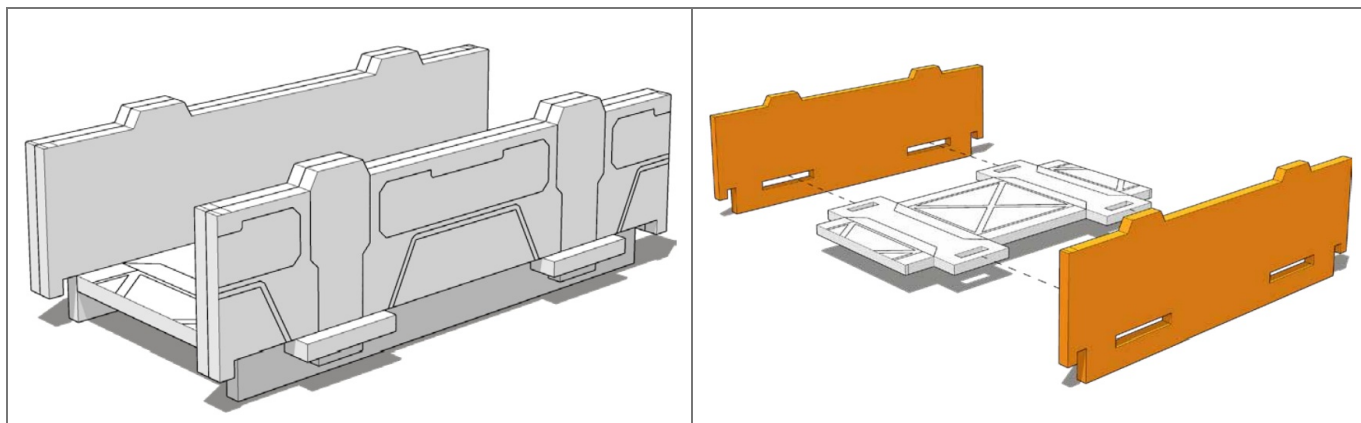
Sub-assembly complete.
This smaller construction
is ready to add to the
main kit

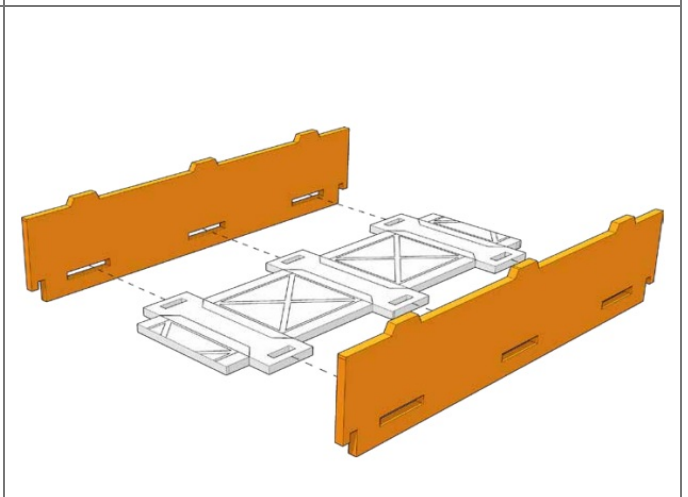
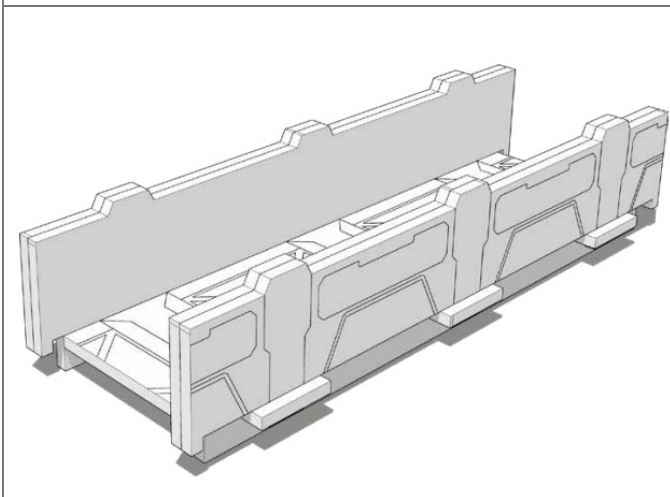
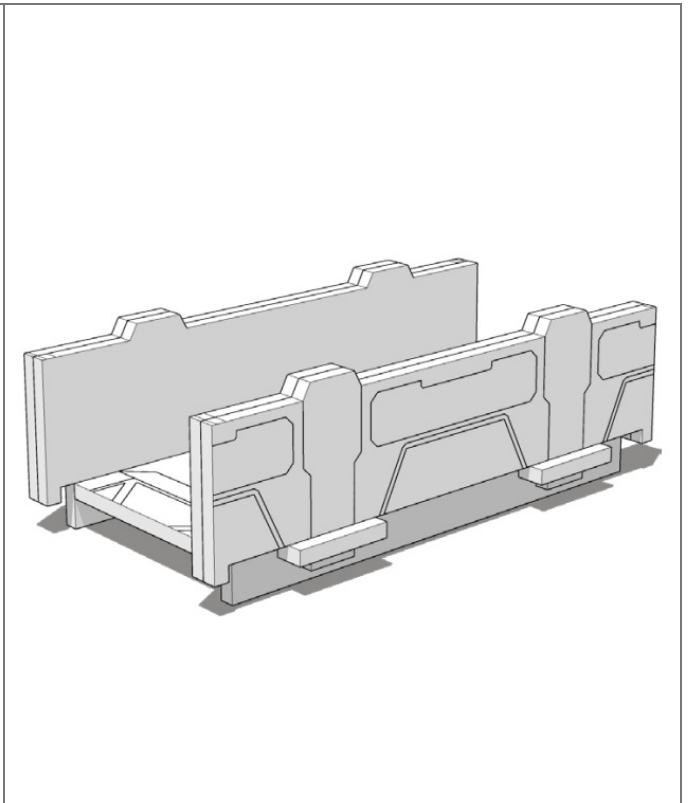
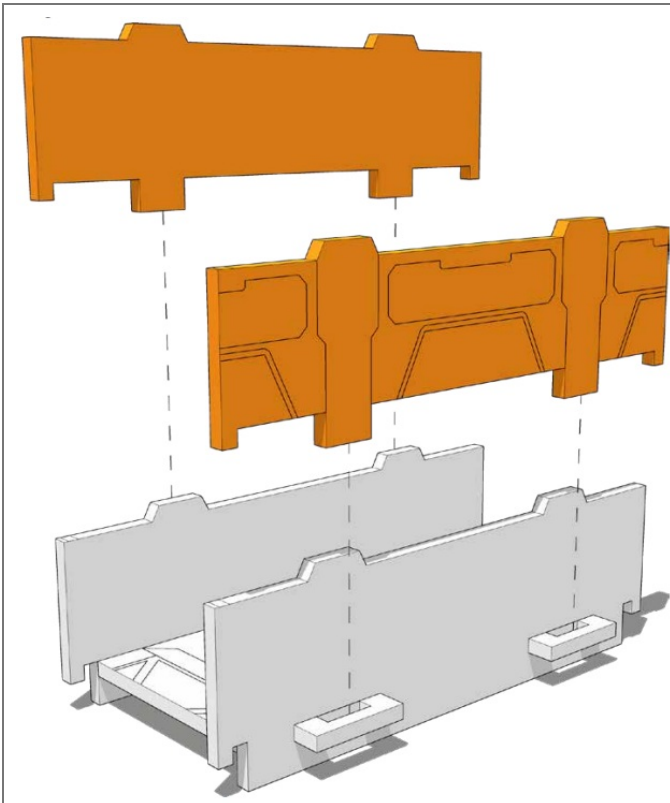


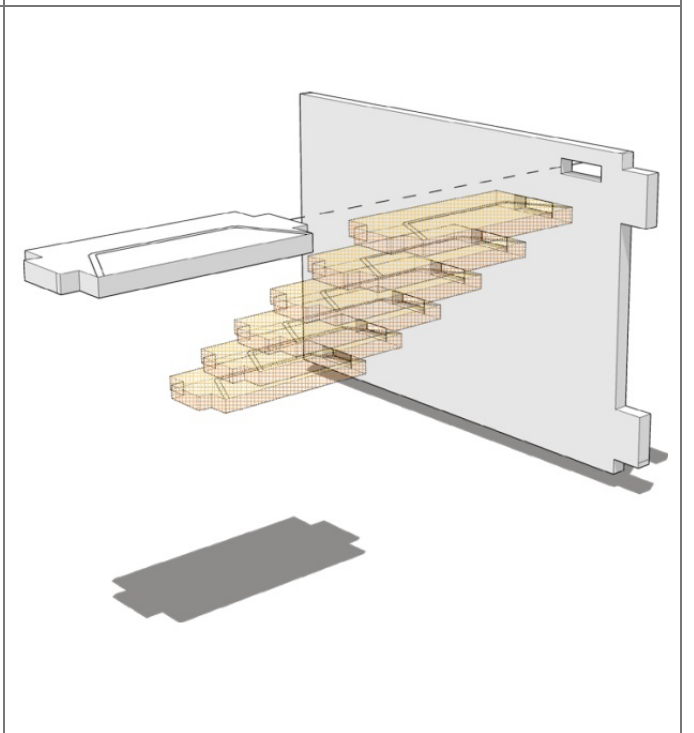
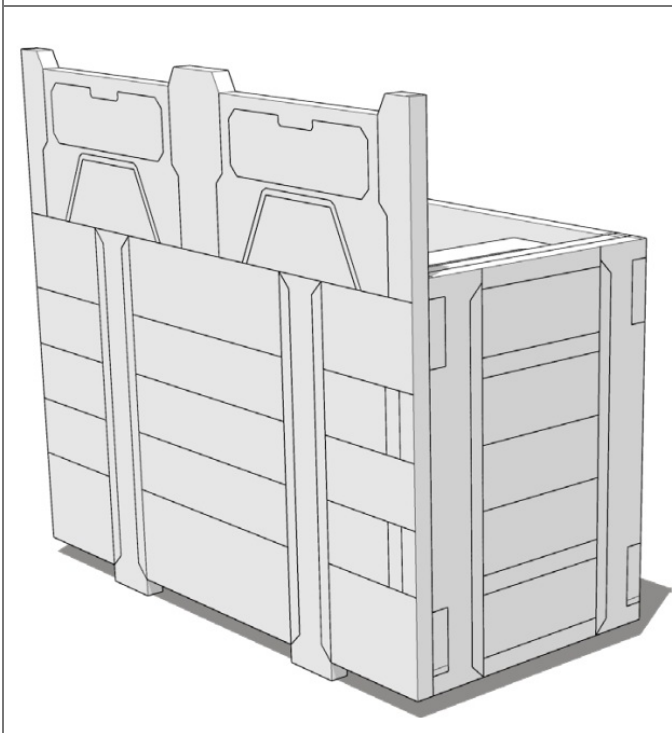
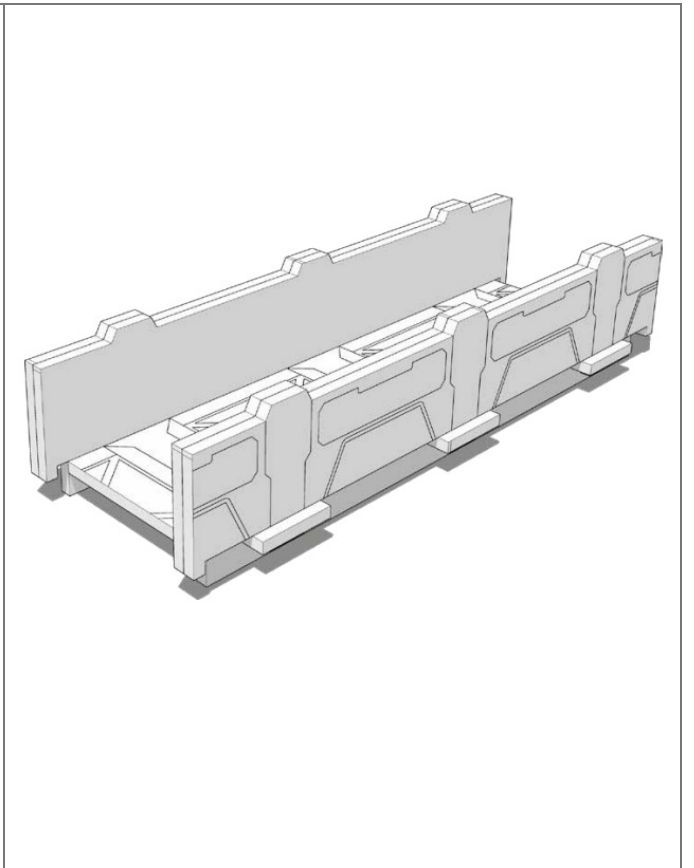
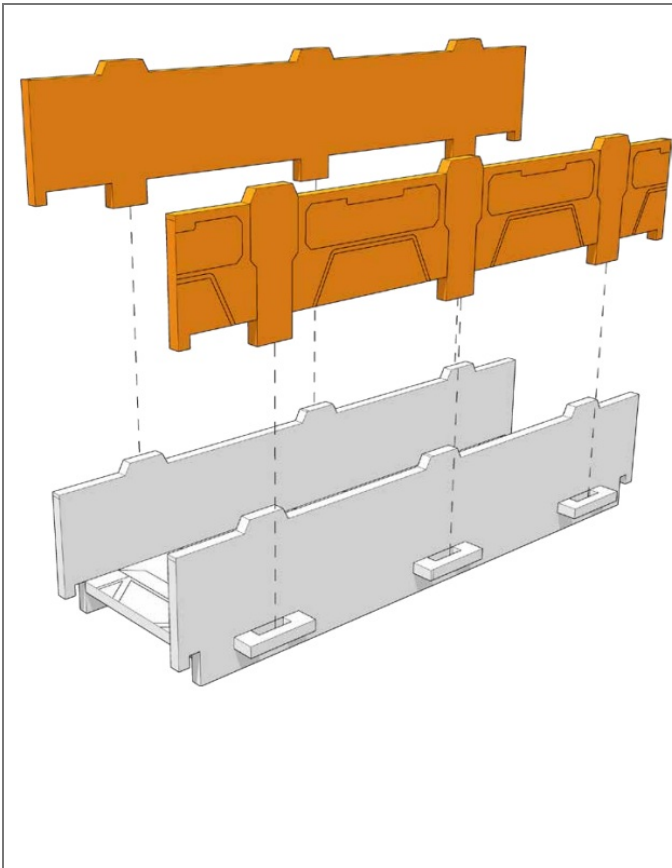
Assembly Complete! There
could be more optional
parts - check to the very end
of instructions

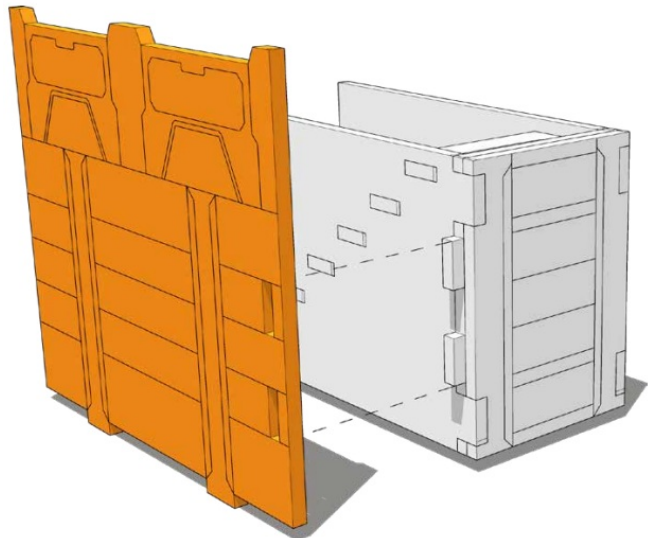
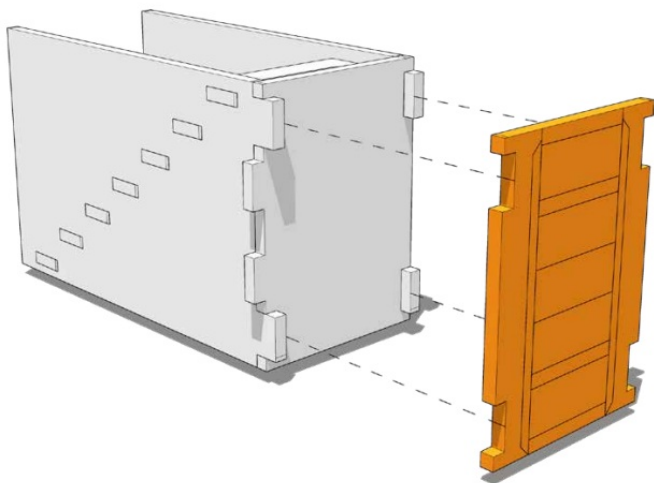
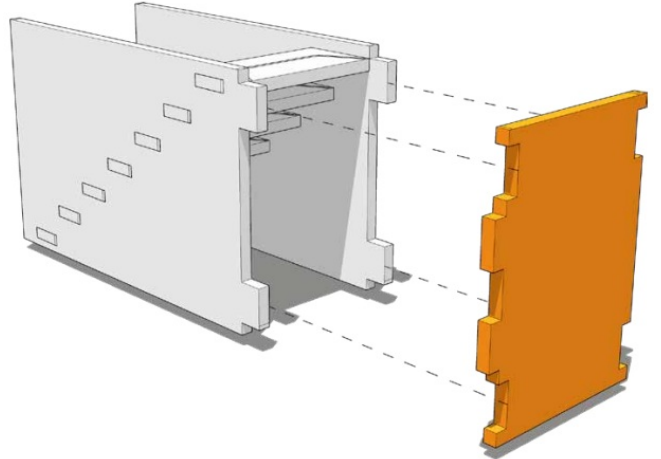
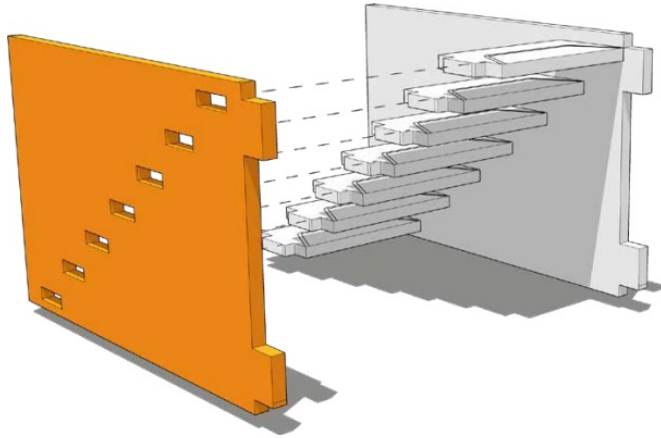


FRAGILE: DO NOT BEND.
“Bendy wood” is designed to
curve around a designed
frame only.



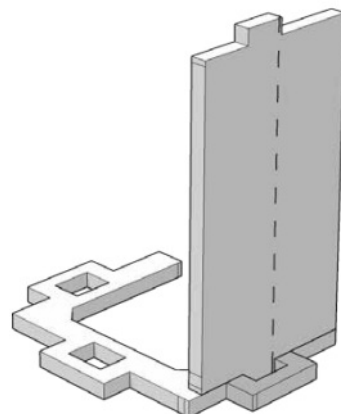
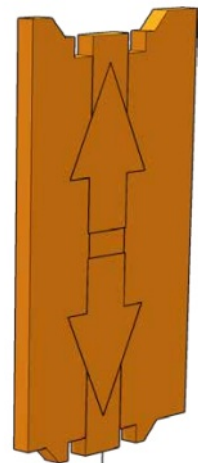
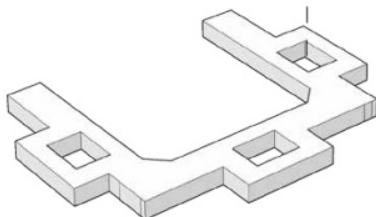
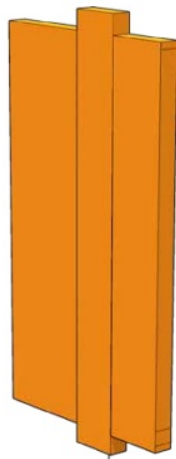
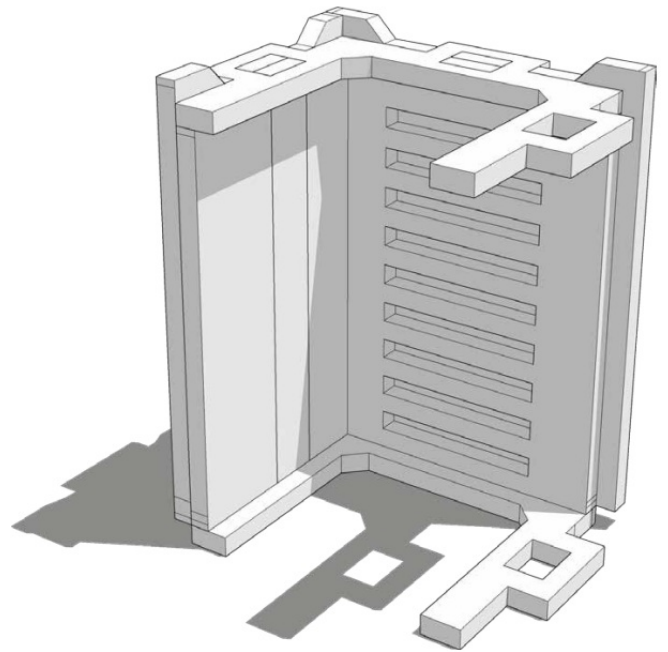


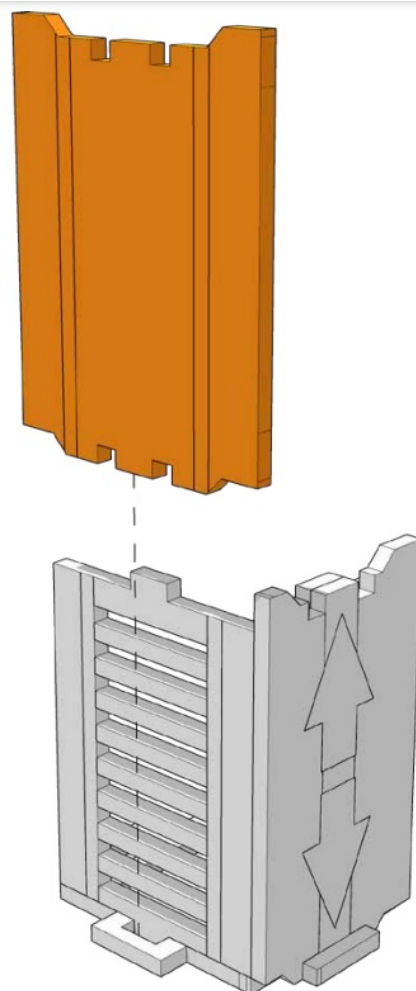
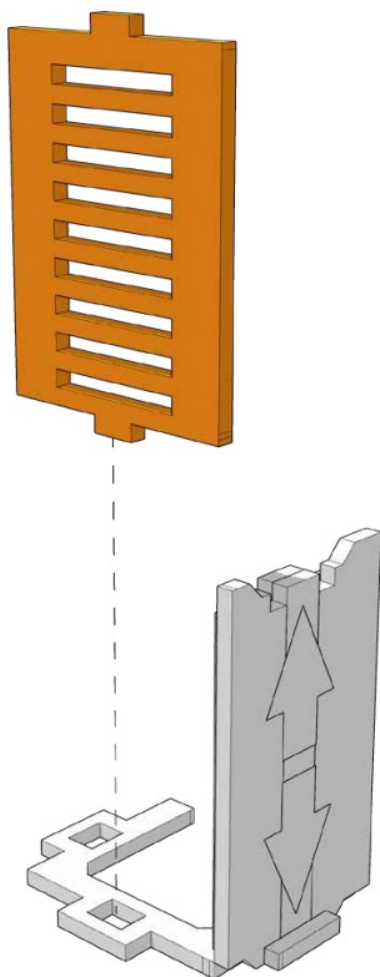


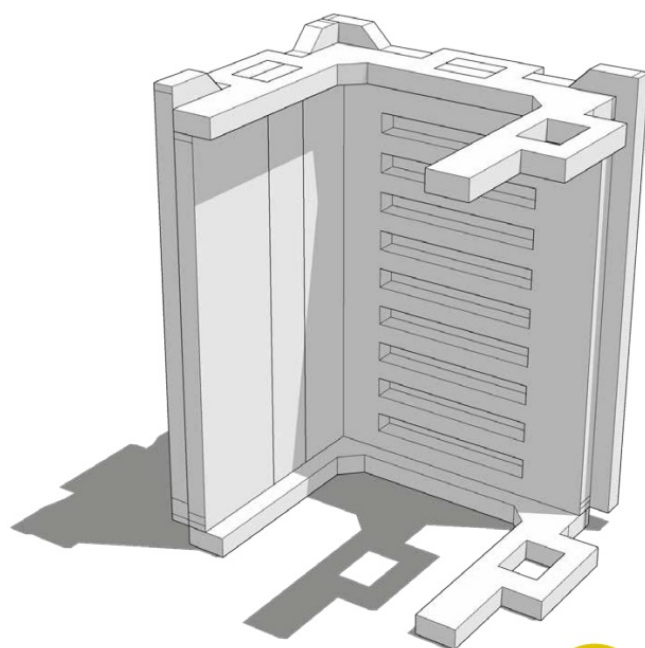
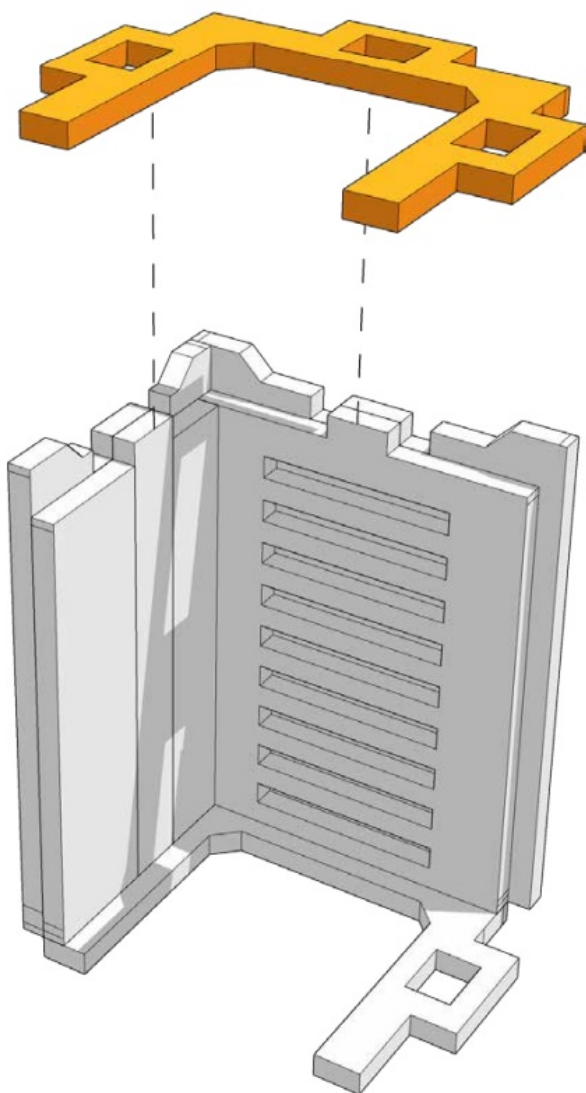


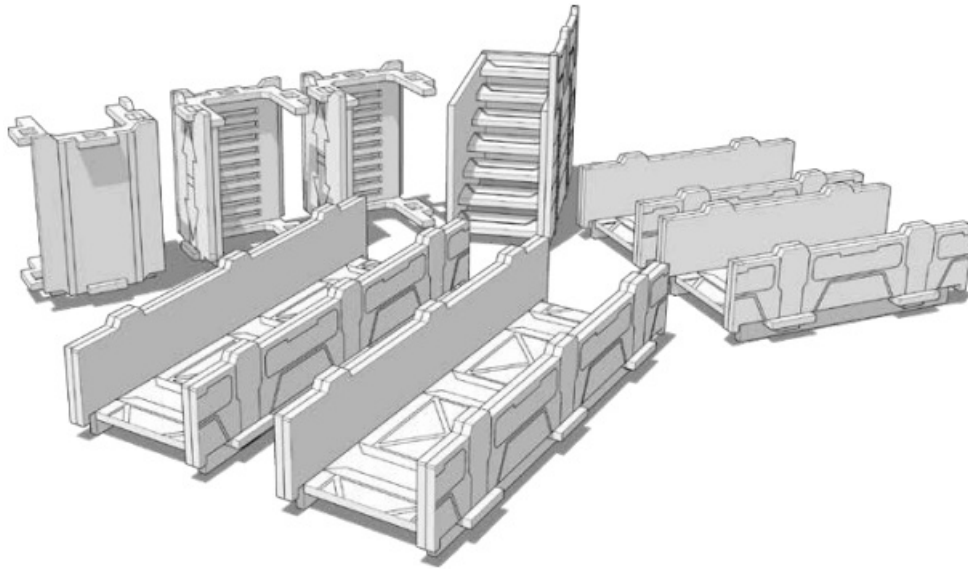


TTCOMBAT










Contents

- [1 Documents / Resources](#)
- [2 Related Posts](#)

Documents / Resources

	<p>TTCOMBAT TTSCW-SFU-157 Slab Streets Access points and Walkways [pdf] Instruction Manual</p> <p>TTSCW-SFU-157, TTSCW-SFU-157 Slab Streets Access points and Walkways, Slab Streets Access points and Walkways, Access points and Walkways, Walkways</p>
---	---