



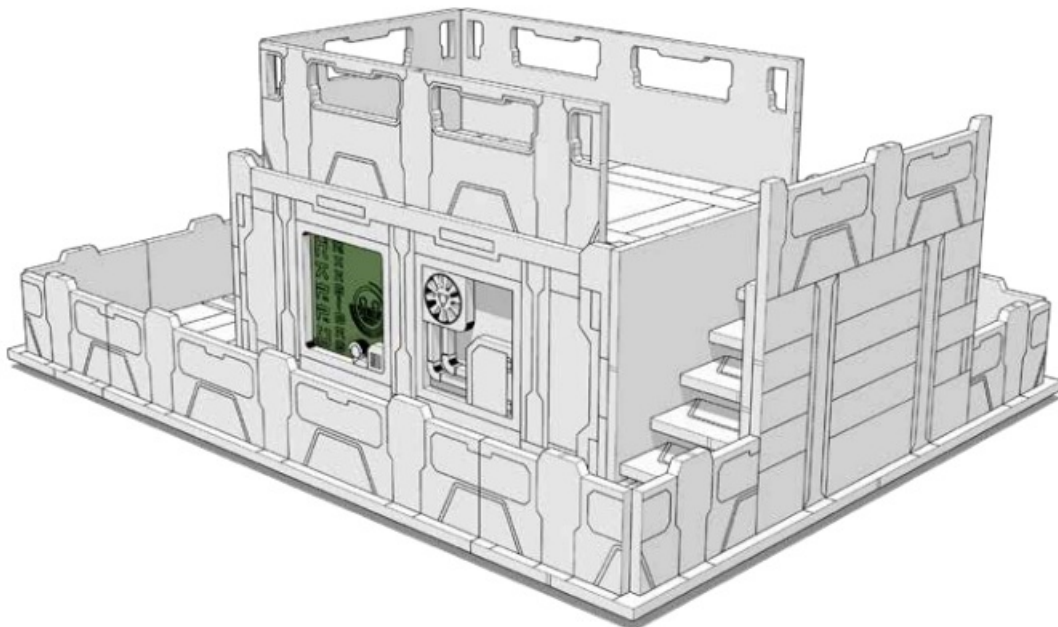
TTCOMBAT TTSCW-SFU-154 Slab Streets Instruction Manual

[Home](#) » [TTCOMBAT](#) » TTCOMBAT TTSCW-SFU-154 Slab Streets Instruction Manual 



TABLETOP SCENICS

TTSCW-SFU-154
Slab Streets Slab.Hab Small



Contents

[1 TTSCW-SFU-154 Slab](#)

[Streets](#)

[2 Documents / Resources](#)

[3 Related Posts](#)

TTSCW-SFU-154 Slab Streets

These are a series of icons that may be used throughout the instructions to help your assembly.
If in doubt, scroll ahead to confirm.



Do not glue this part



Carefully score and
fold this part



This part - or its placement is
completely optional



Look closely at this step -
The process order or part
used, may be specific



Repeat making this part
the specified number
of times



The next instruction step
will be the same assembly
so far, but from a different
angle



Sub-assembly complete.
This smaller construction
is ready to add to the
main kit

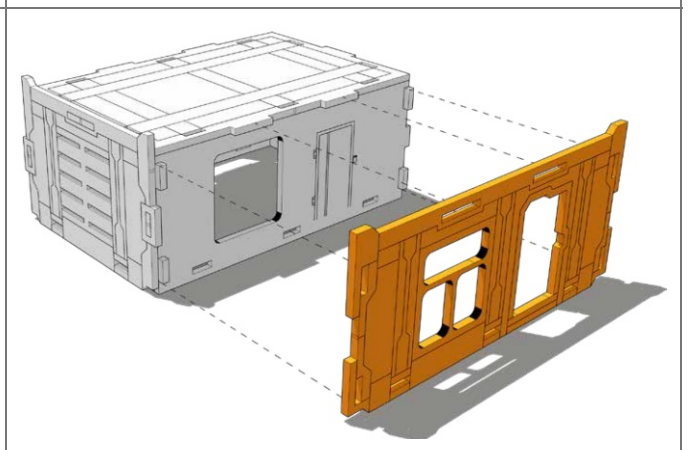
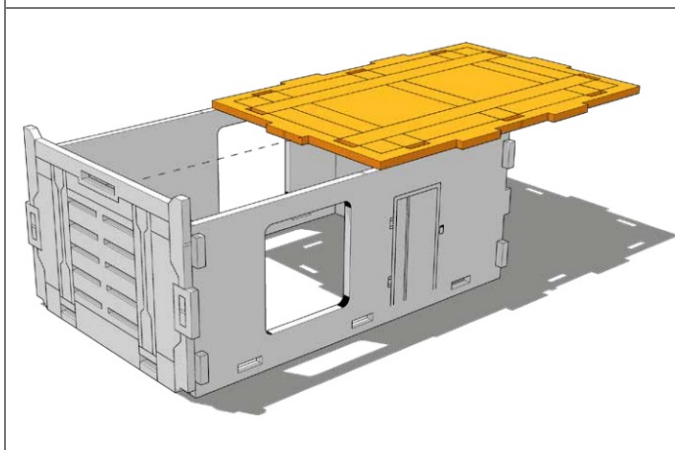
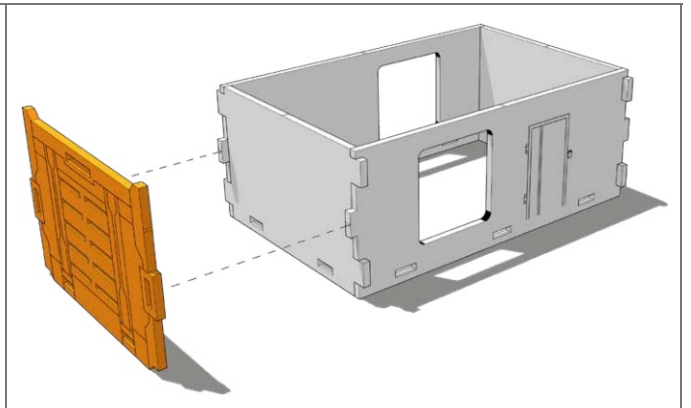
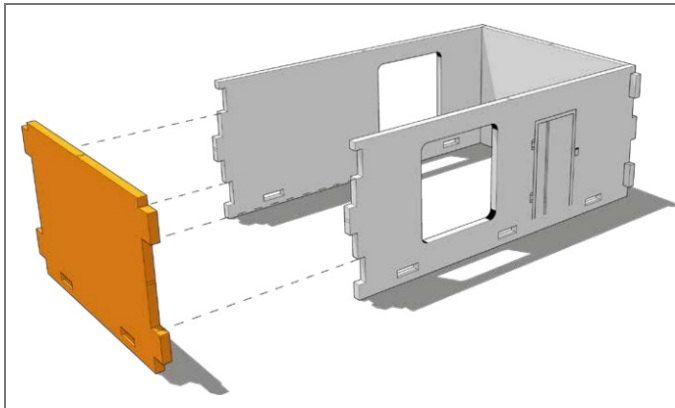
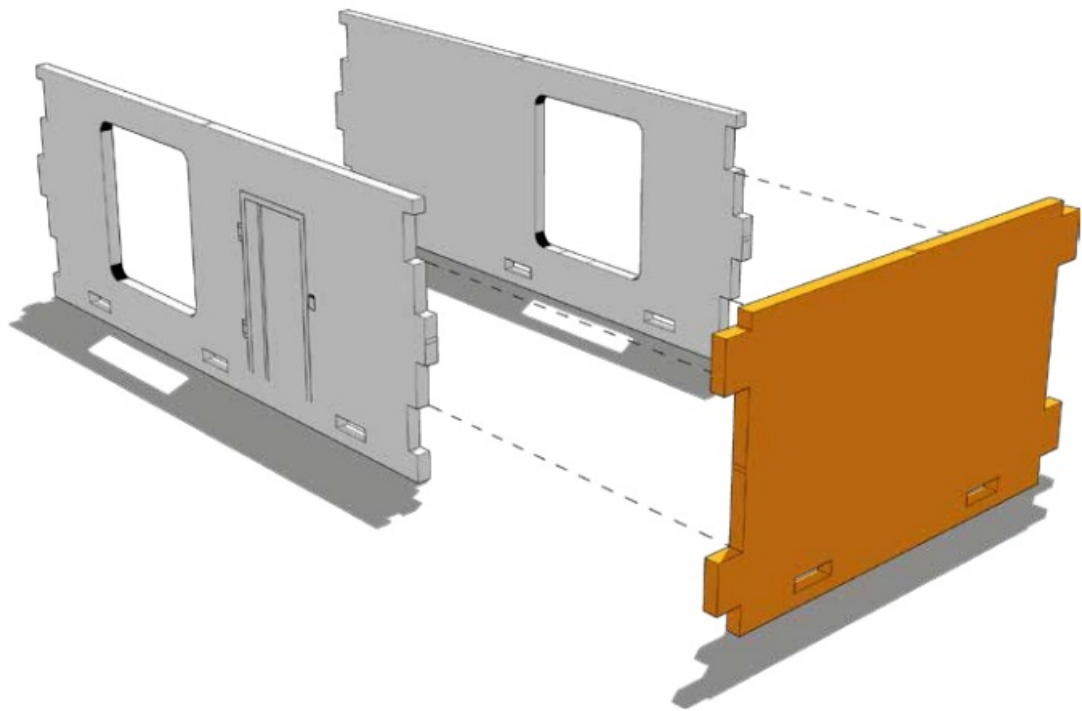


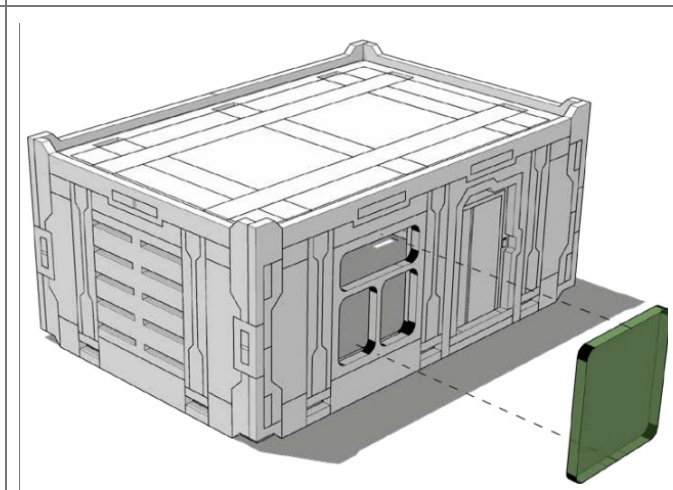
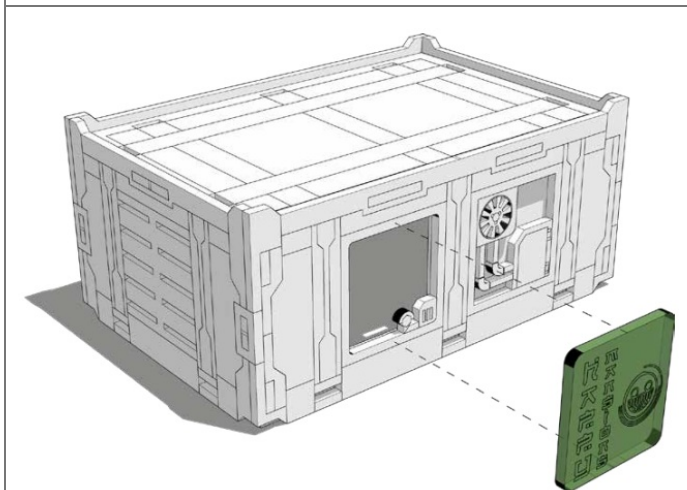
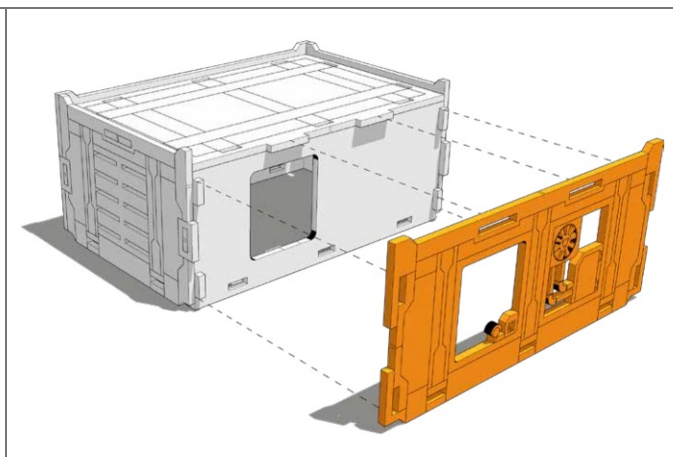
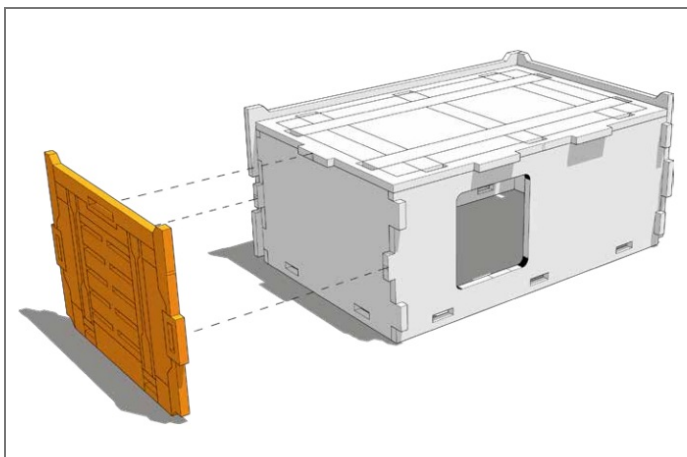
Assembly Complete! There
could be more optional
parts - check to the very end
of instructions



FRAGILE: DO NOT BEND.
“Bendy wood” is designed to
curve around a designed
frame only.



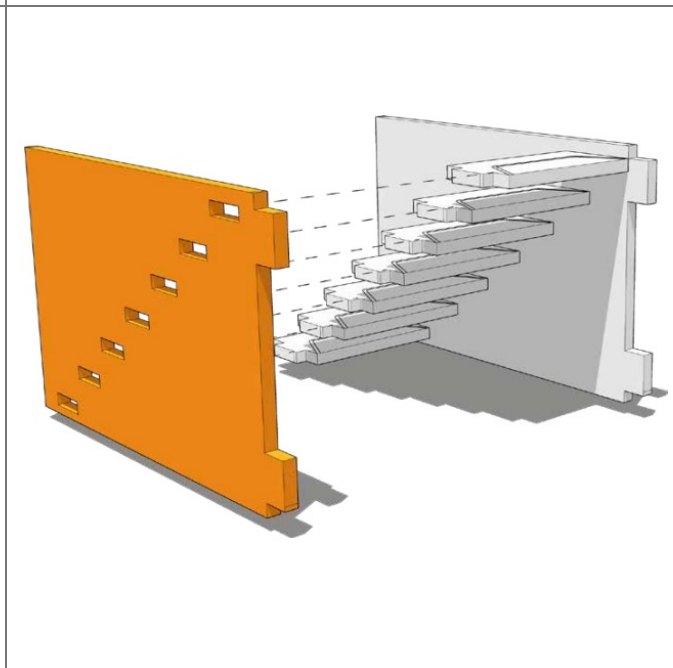
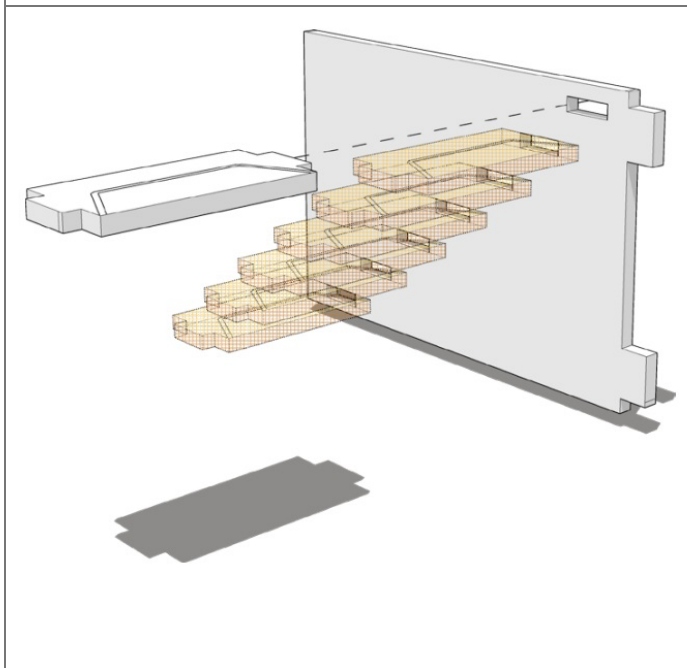


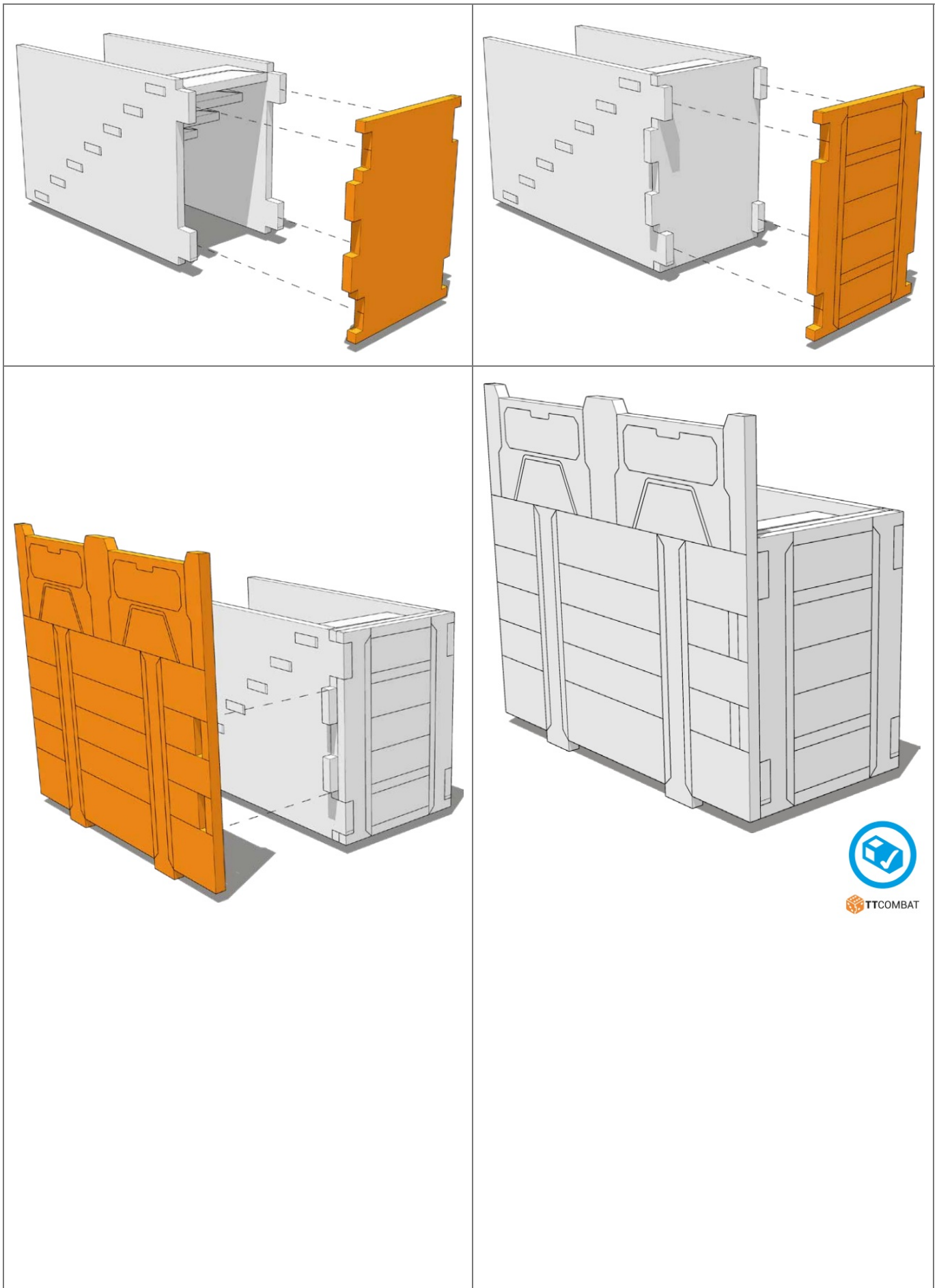


Recommended to test fit first. Insert windows from the inside.
Detailed windows are optional and fit on the end where there is no
centre frame

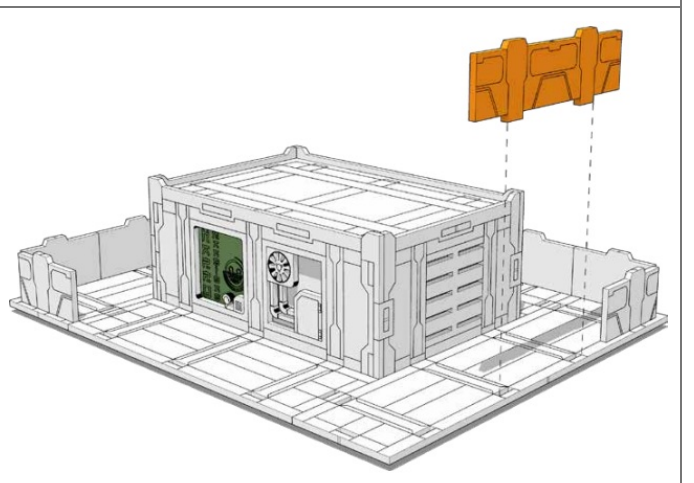
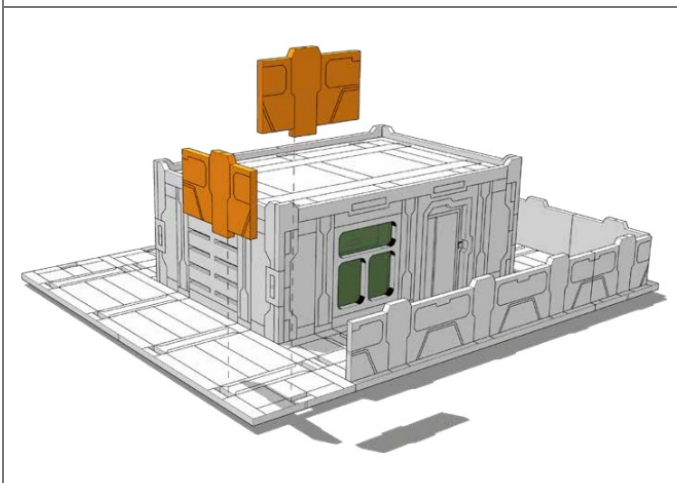
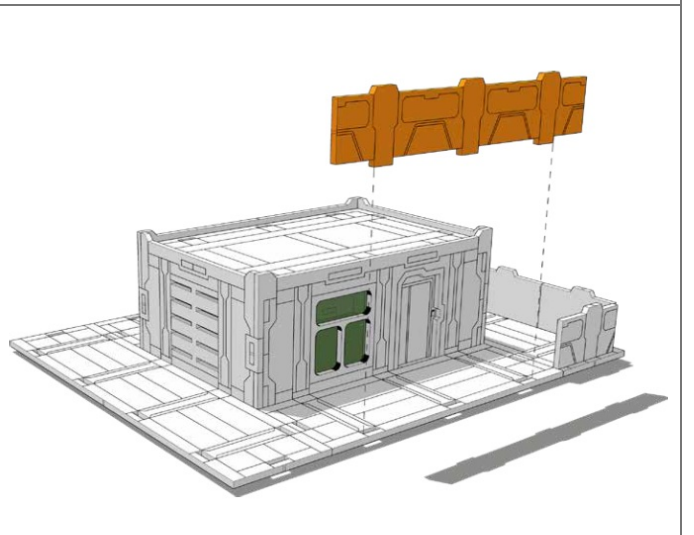
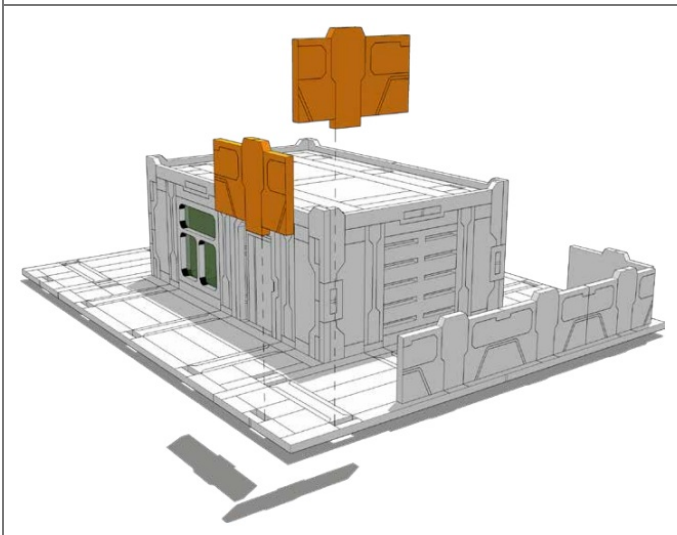
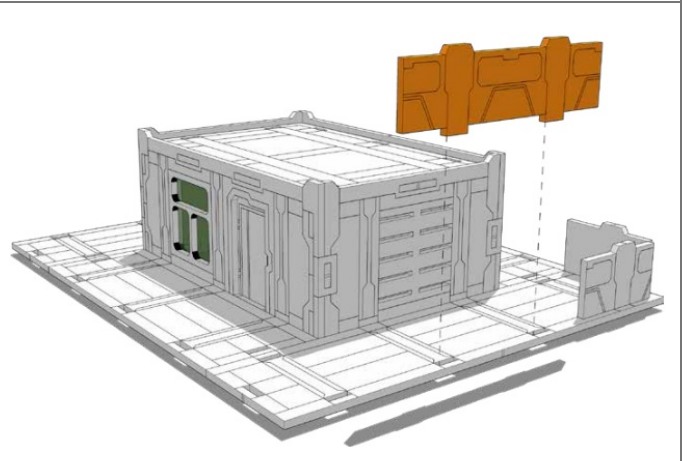
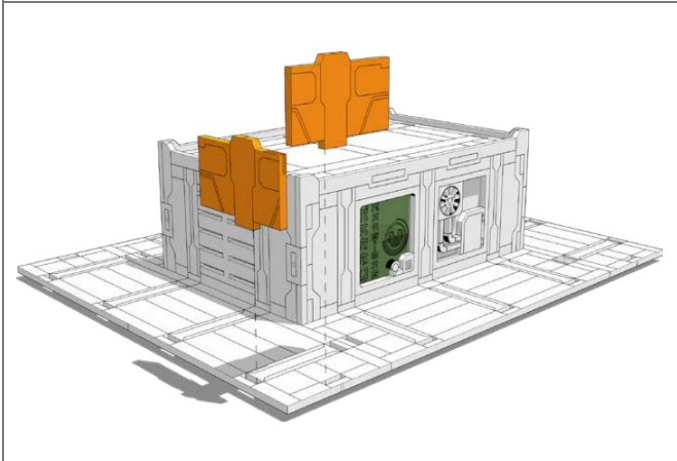
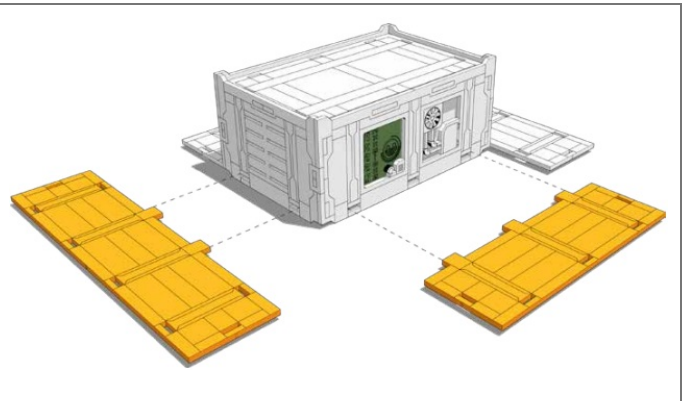
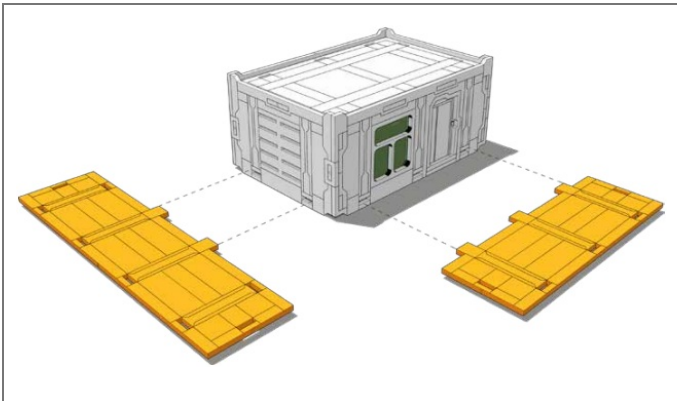


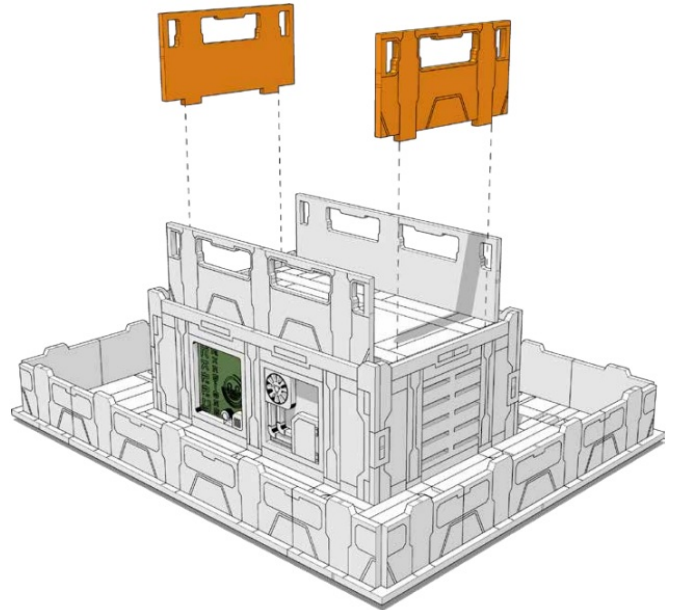
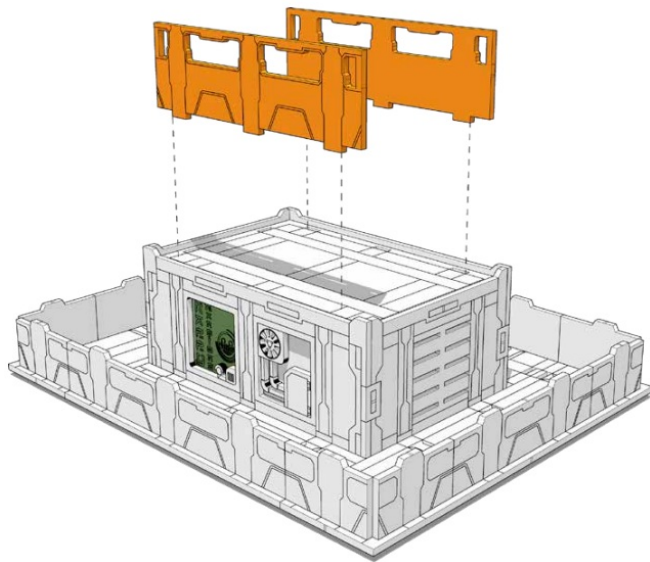
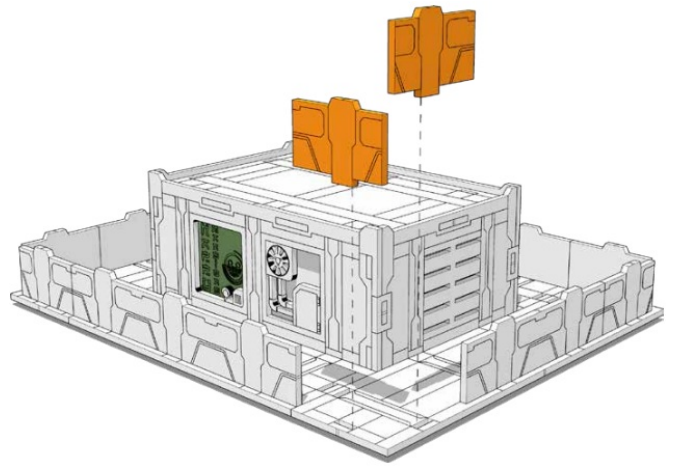
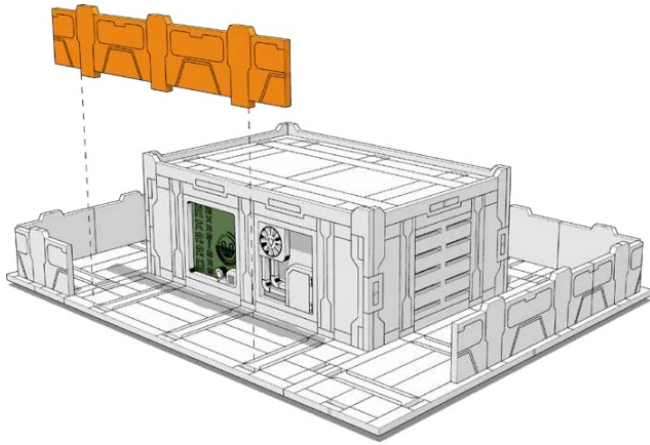
Recommended to test fit first. Insert windows from the inside.
Detailed windows are optional and fit on the end where there is no
centre frame

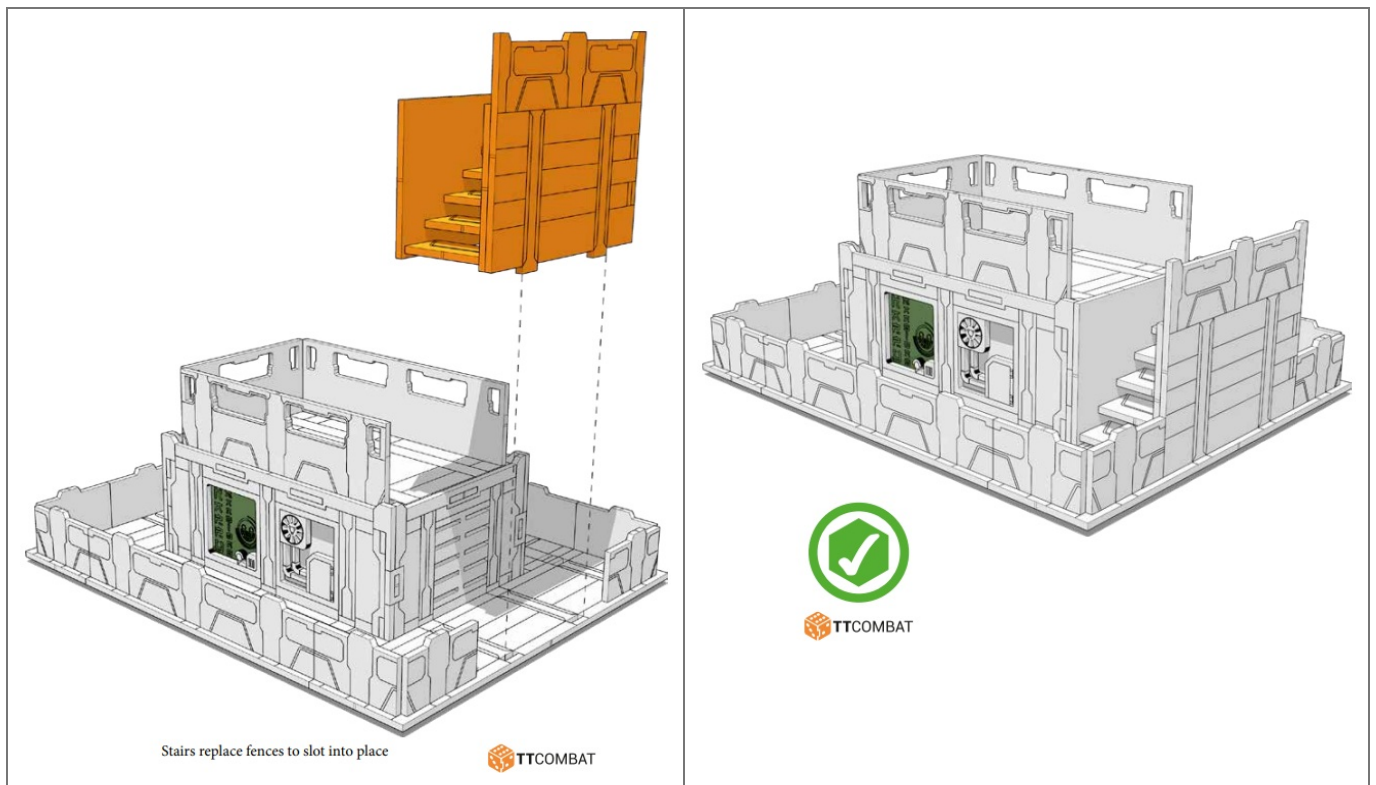




All following steps are optional to glue in place. It is recommended to NOT glue in place to allow different layout options with the rest of the Slab.Hab Range

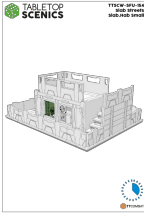







TABLETOP SCENICS

Documents / Resources

	<p>TTCOMBAT TTSCW-SFU-154 Slab Streets [pdf] Instruction Manual SFU154_INS, TTSCW-SFU-154, TTSCW-SFU-154 Slab Streets, Slab Streets, Streets</p>
	<p>TTCOMBAT TTSCW-SFU-154 Slab Streets [pdf] Instruction Manual SFU155, TTSCW-SFU-154 Slab Streets, Slab Streets, Streets</p>