



TTCOMBAT TTSCW-SFU-142 Mule Tunnel Instruction Manual

[Home](#) » [TTCOMBAT](#) » TTCOMBAT TTSCW-SFU-142 Mule Tunnel Instruction Manual 

Contents

- [1 TTCOMBAT TTSCW-SFU-142 Mule Tunnel](#)
- [2 Product Usage Instructions](#)
- [3 INSTRUCTION](#)
- [4 ASSEMBLY](#)
- [5 Documents / Resources](#)
- [6 Related Posts](#)



TTCOMBAT TTSCW-SFU-142 Mule Tunnel



Product Information:

The TTSCW-SFU-142 Mule: Tunnel is a construction kit that allows you to build a tunnel for your model train or other miniature setups. The kit includes various parts that need to be assembled to create the tunnel structure.

Product Usage Instructions

1. Start by carefully reading through the entire set of instructions to familiarize yourself with the assembly process.
2. Refer to the series of icons provided in the instructions to help with your assembly. These icons will provide guidance on specific actions or steps.
3. Do not glue any parts unless explicitly instructed to do so.
4. For parts that need folding, use a scoring tool to create precise fold lines. Take care while folding to avoid damaging the parts.
5. Note that some parts or their placement may be optional, depending on your desired layout.
6. Pay close attention to each step and ensure that you follow the specified order and use the correct parts.
7. If a step requires repeating the construction of a part, make sure to do so the specified number of times.
8. Occasionally, the next instruction step may be similar to the previous assembly but from a different angle. Take note of this change in perspective.
9. Once a sub-assembly is complete, it can be added to the main kit.
10. Continue following the instructions until the entire assembly is complete. There may be additional optional parts towards the end, so check thoroughly.
11. Be careful while handling the parts, especially if they are labeled as "FRAGILE: DO NOT BEND." These parts are designed to curve around a specific frame only.
12. Highlighted parts may need to be placed on the inside or outside of the previous part. Follow the instructions to ensure correct placement.
13. If alternative layouts are mentioned, refer to the end of the instructions for details.

By following these instructions, you will be able to successfully assemble the TTSCW-SFU-142 Mule: Tunnel and create an attractive addition to your model train or miniature setup.

TTSCW-SFU-142

Mule:

Tunnel

These are a series of icons that may be used throughout the instructions to help your assembly. If in doubt, scroll ahead to confirm.



Do not glue this part



Carefully score and fold this part



This part - or its placement is completely optional



Look closely at this step -
The process order or part used, may be specific



Repeat making this part
the specified number
of times



The next instruction step
will be the same assembly
so far, but from a different
angle



Sub-assembly complete.
This smaller construction
is ready to add to the
main kit



Assembly Complete! There
could be more optional
parts - check to the very end
of instructions

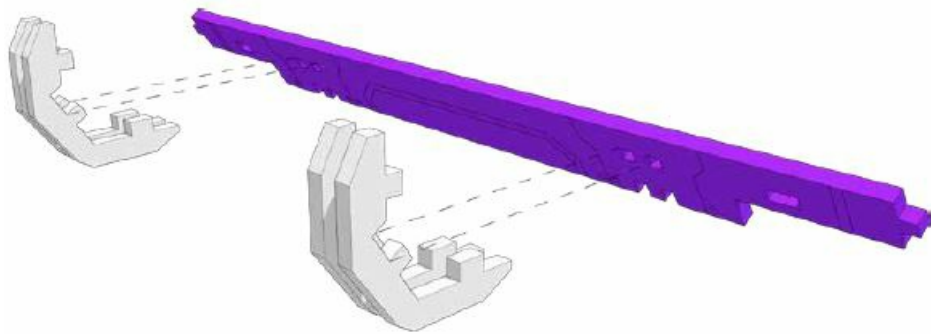


FRAGILE: DO NOT BEND.
"Bendy wood" is designed to
curve around a designed
frame only.

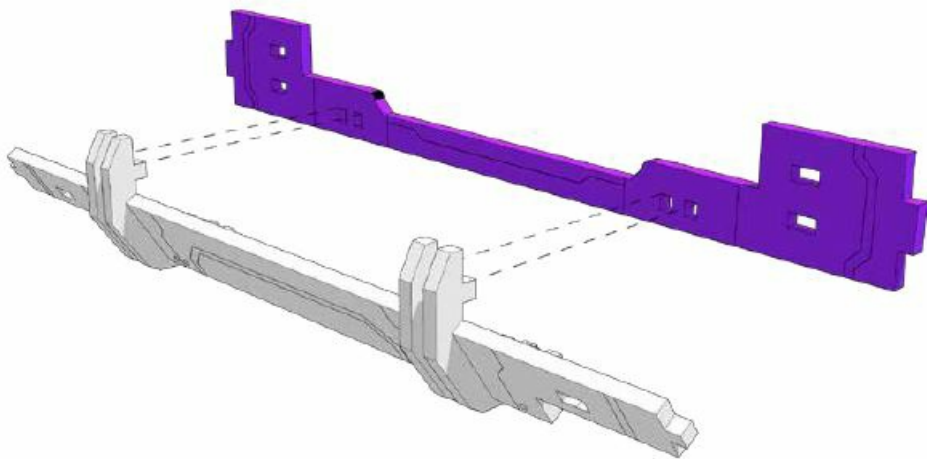
- Do not glue this part
- Carefully score and fold this part
- This part – or its placement is completely optional
- Look closely at this step –
The process order or part used, may be specific
- Repeat making this part the specified number of times
- The next instruction step will be the same assembly so far, but from a different angle
- Sub-assembly complete. This smaller construction is ready to add to the main kit
- Assembly Complete! There could be more optional parts – check to the very end of instructions
- FRAGILE: DO NOT BEND. "Bendy wood" is designed to curve around a designed frame only.

INSTRUCTION

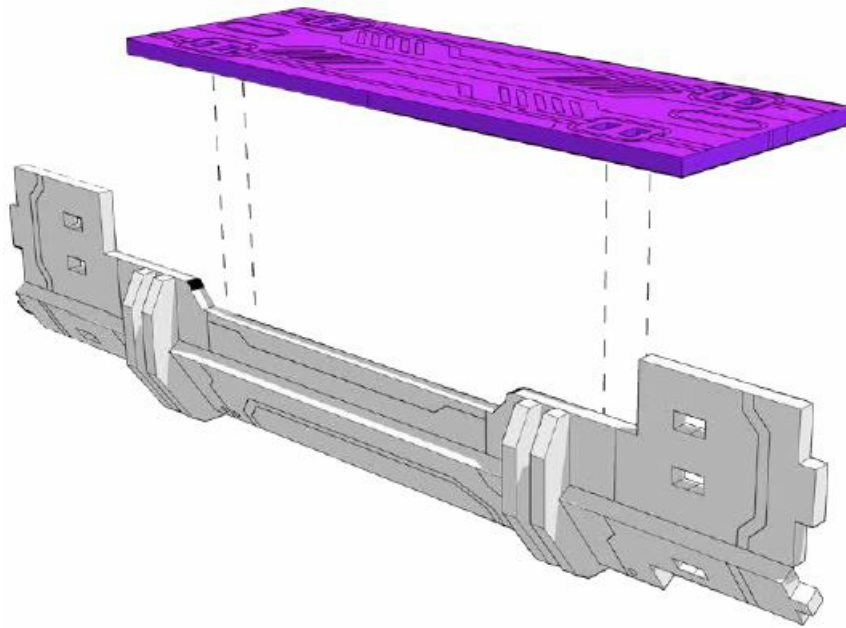
3



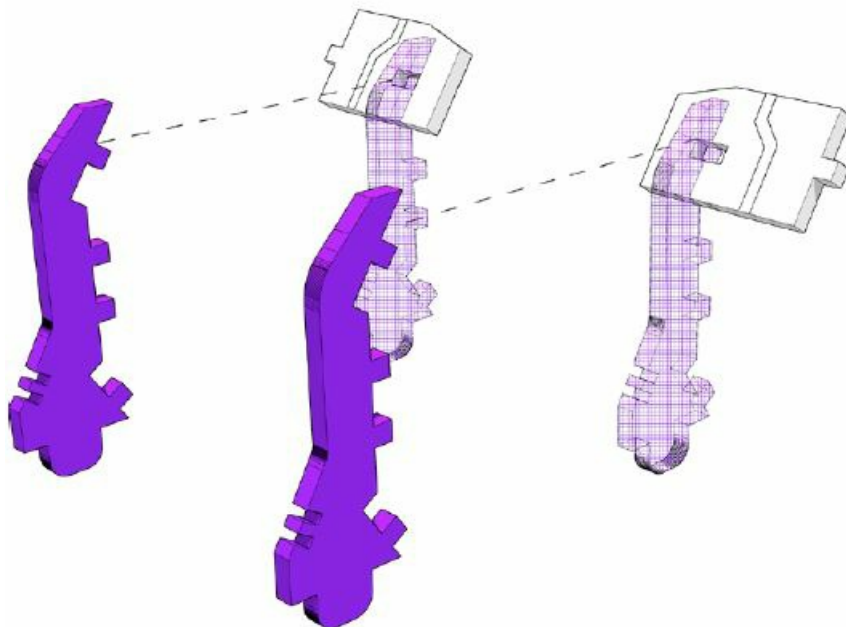
4



5

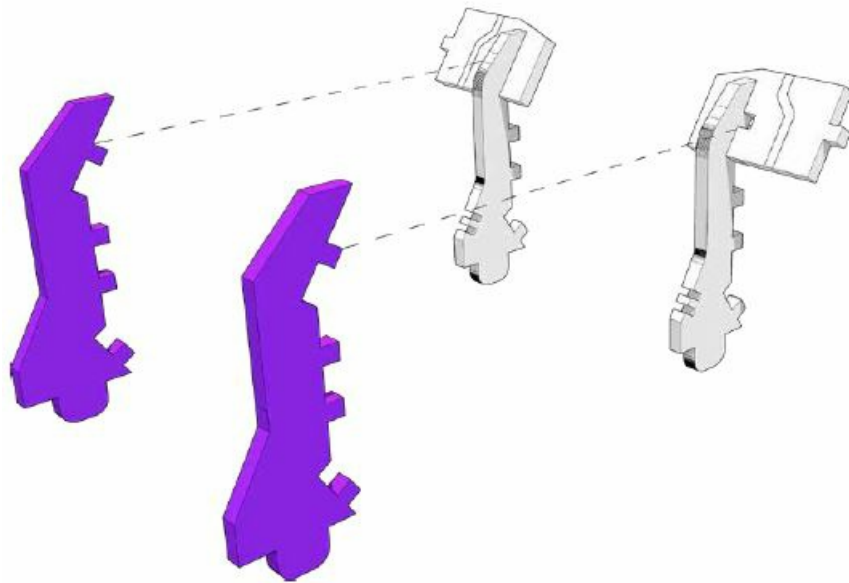


6



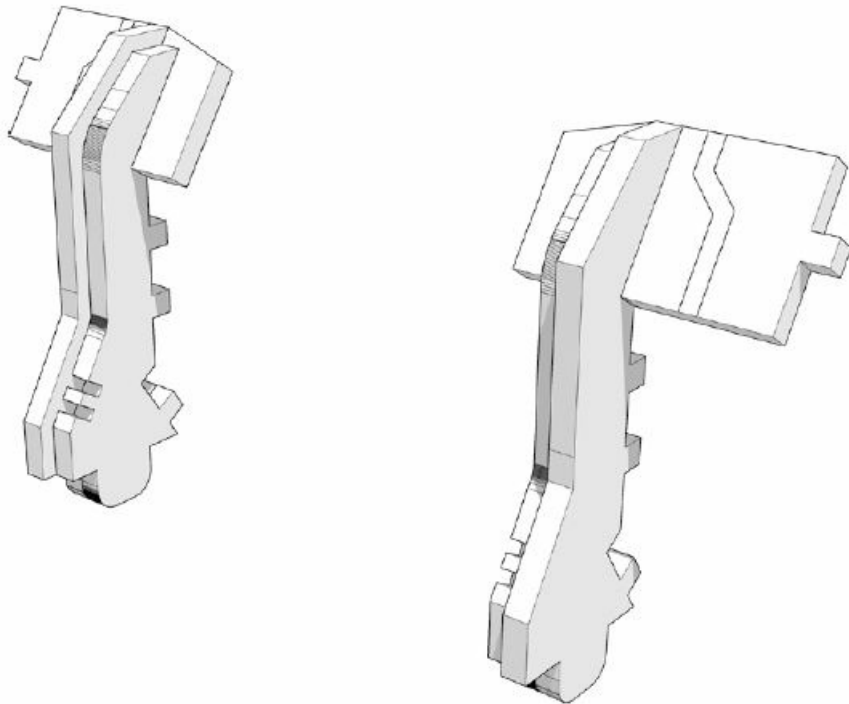
Highlighted parts sit to the inside. See next step

7

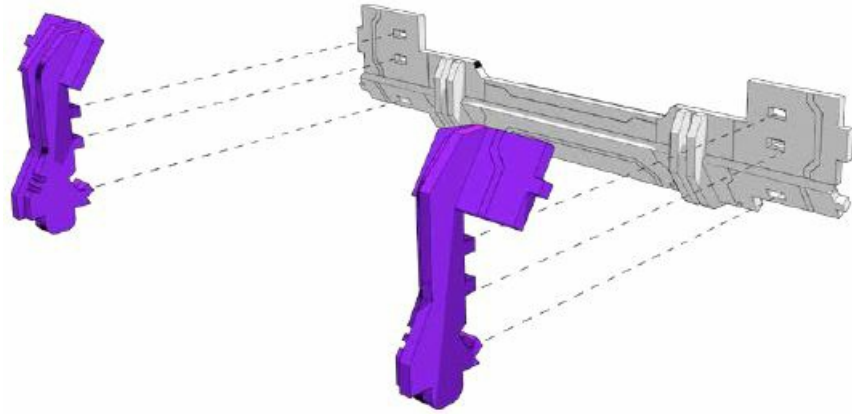


Highlighted parts sit on the outside of the previous part

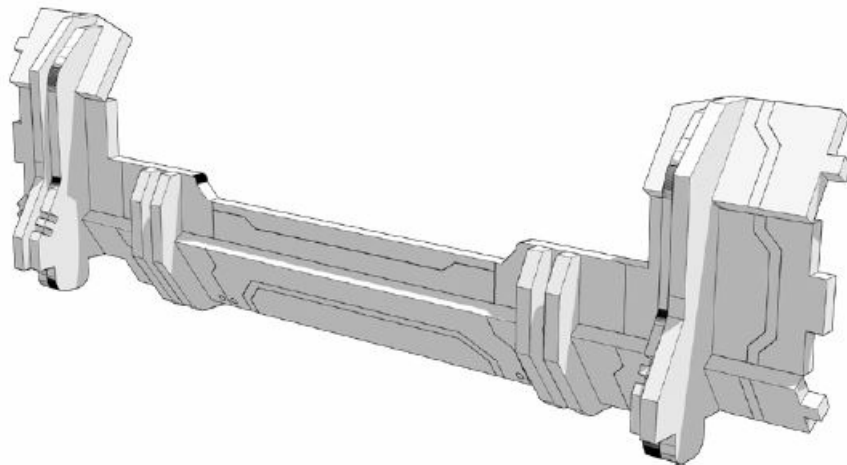
8



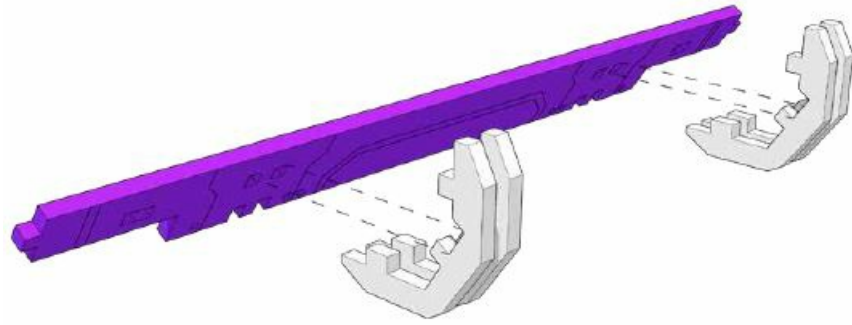
9



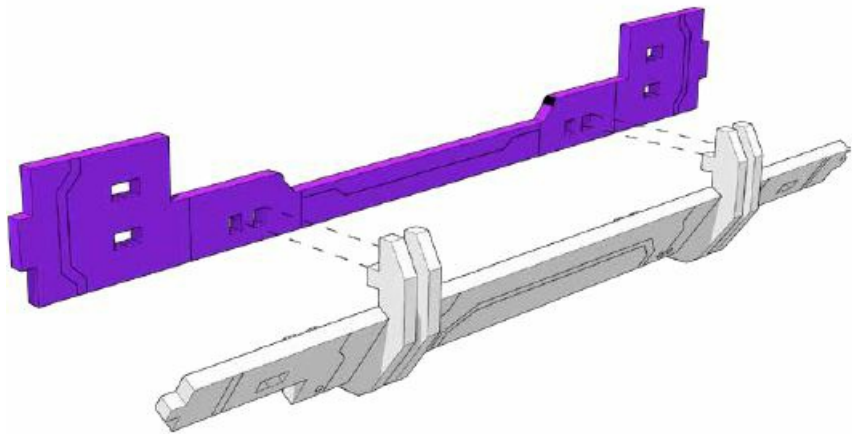
10



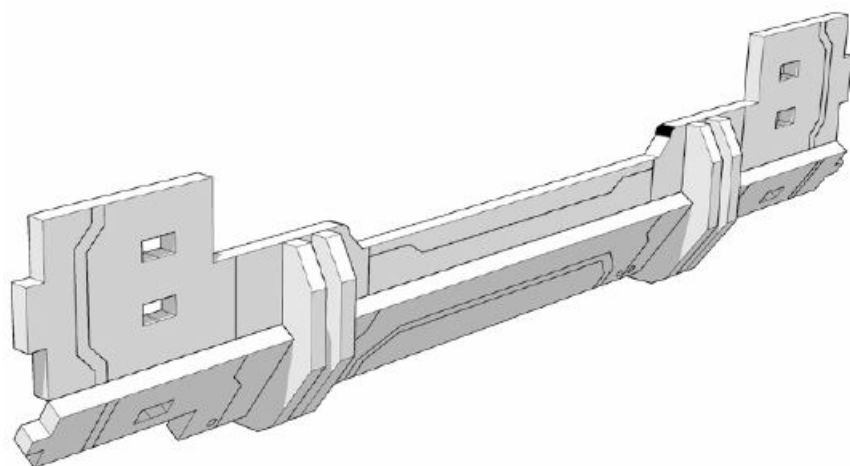
11



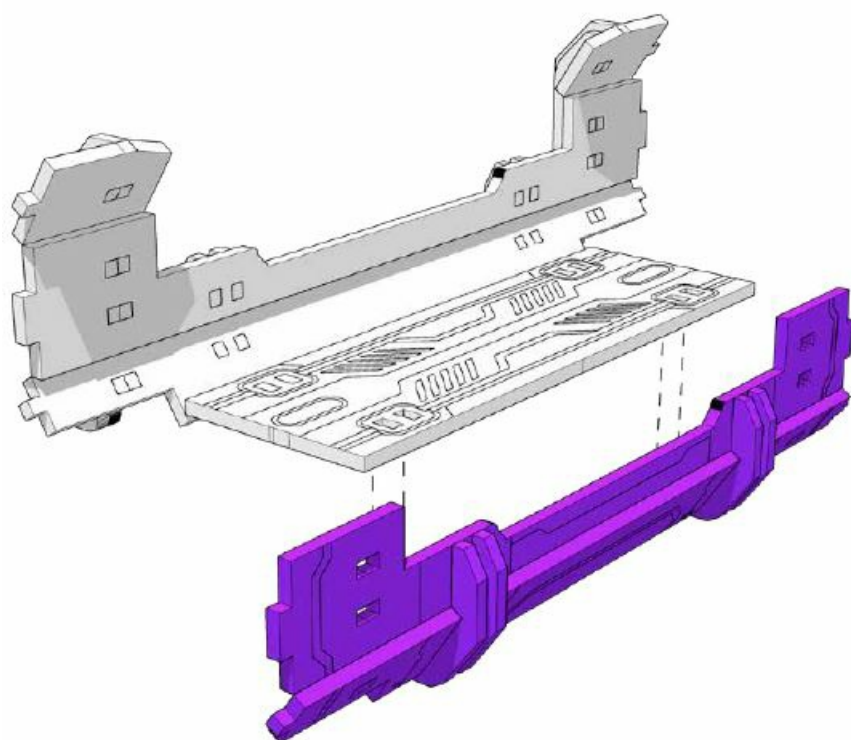
12



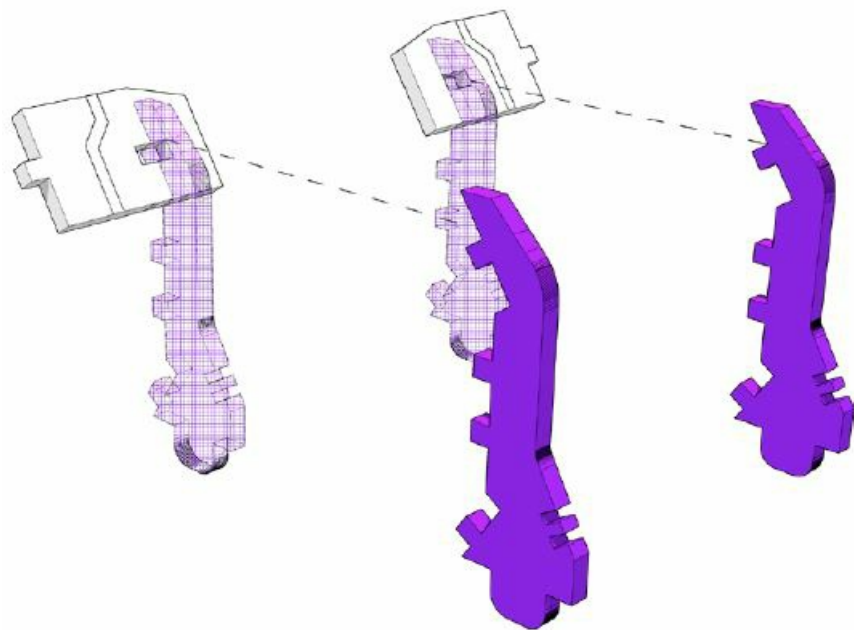
13



14

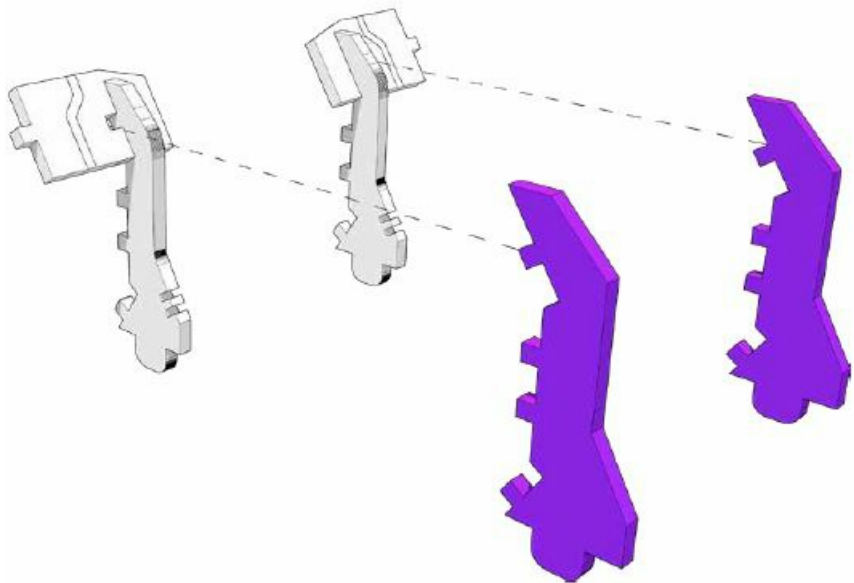


15

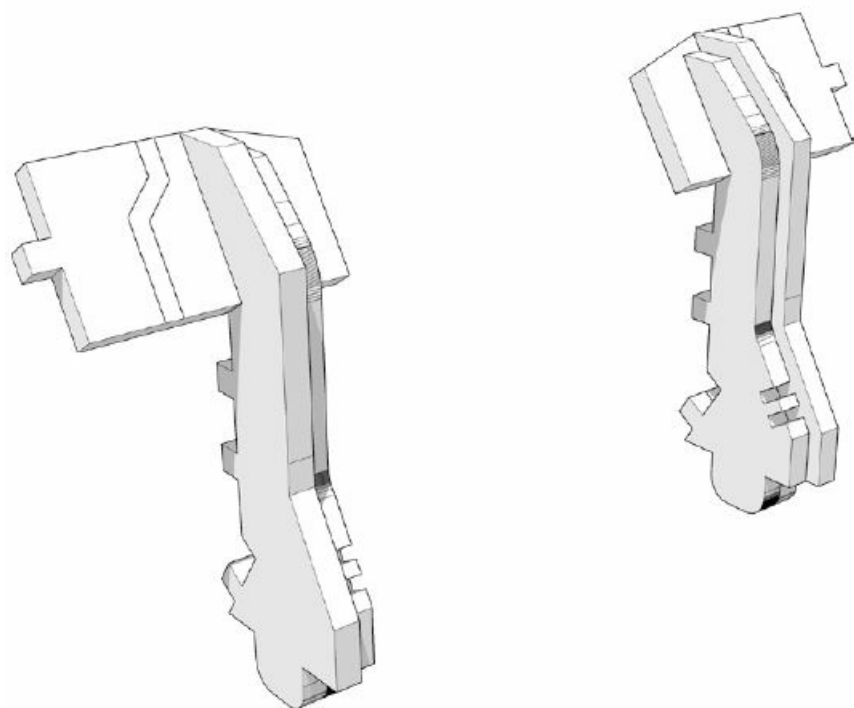


ASSEMBLY

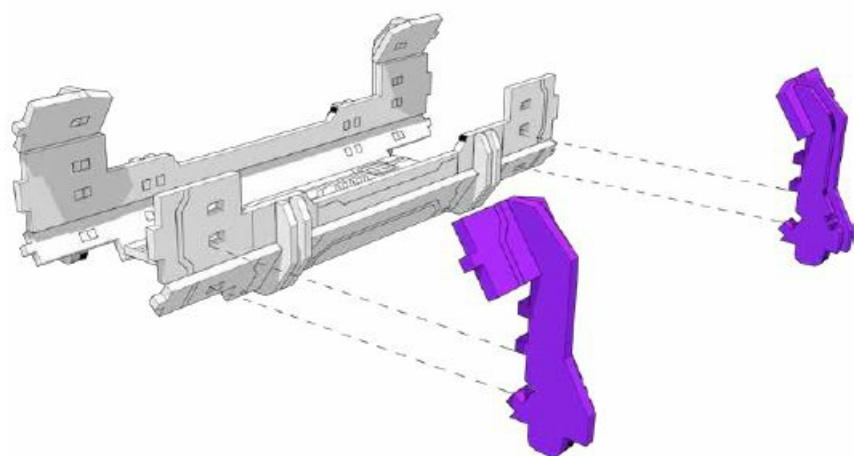
16



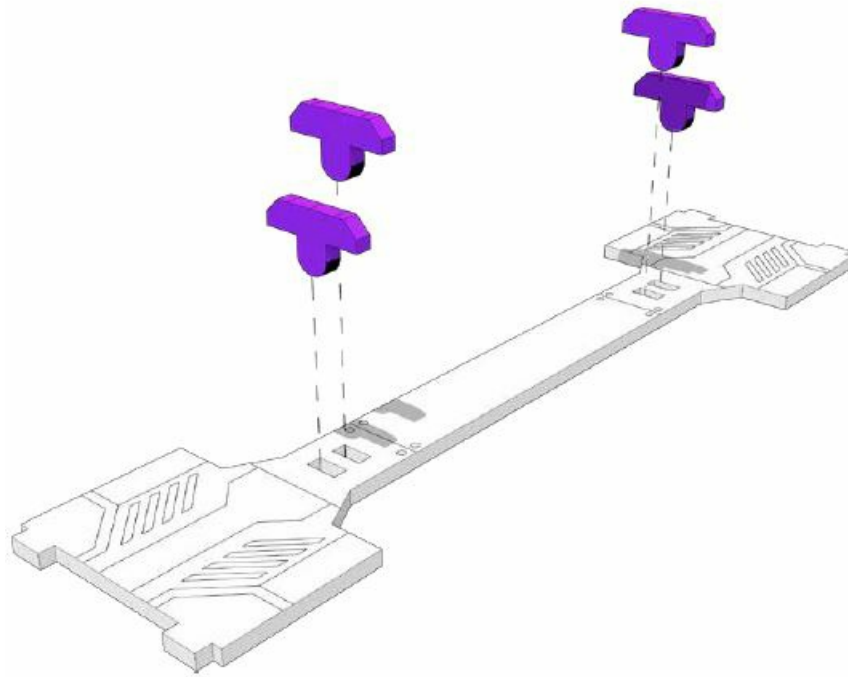
17



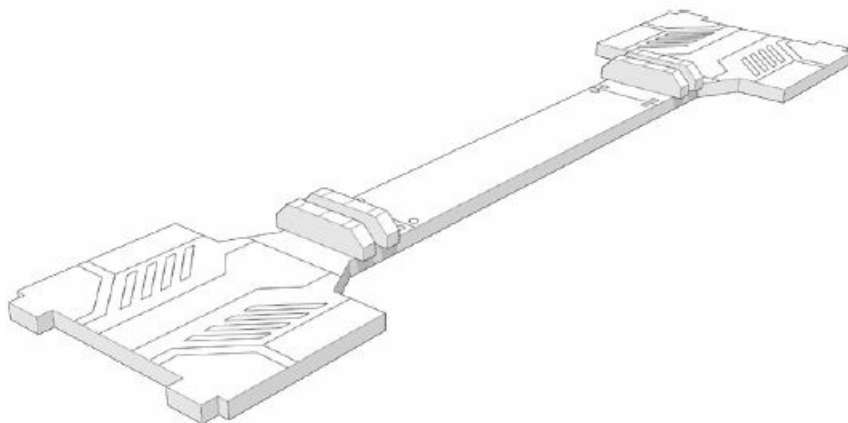
18



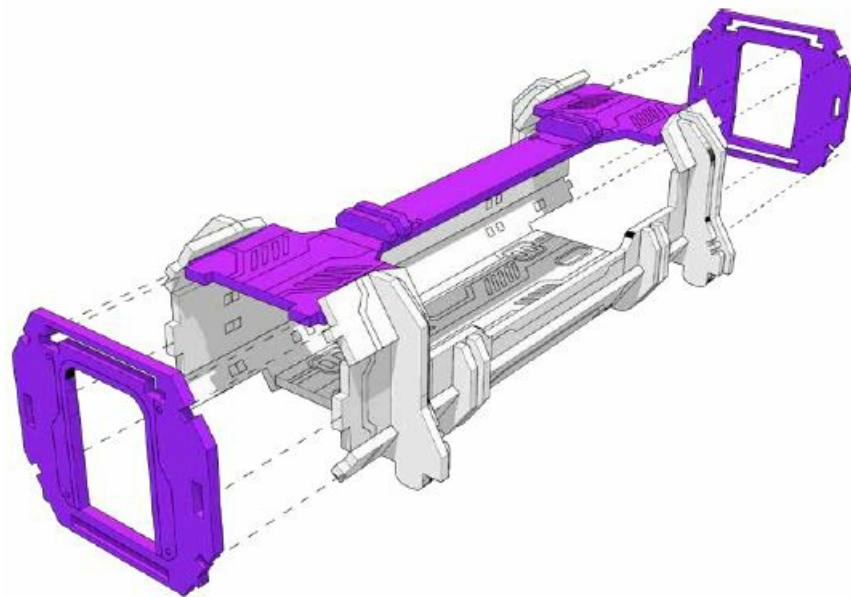
19



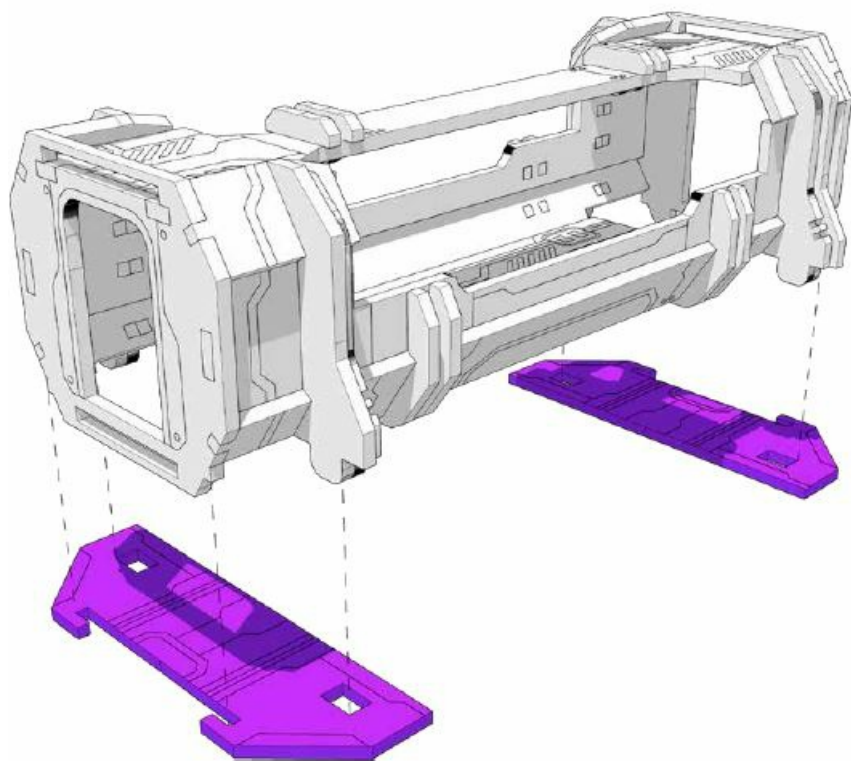
20



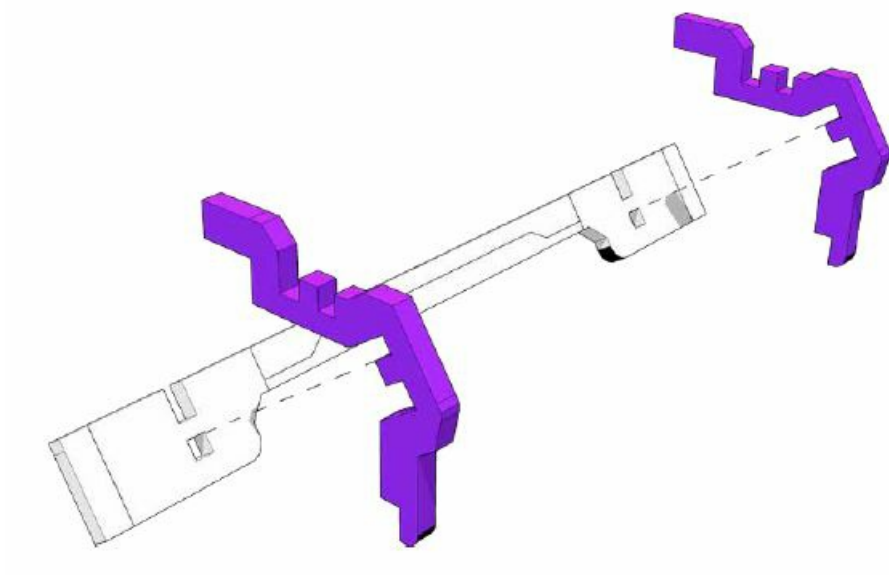
21



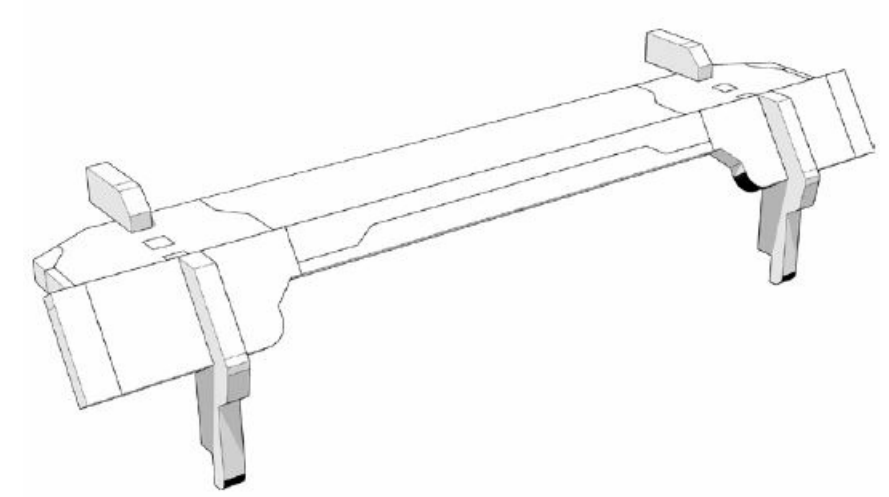
22



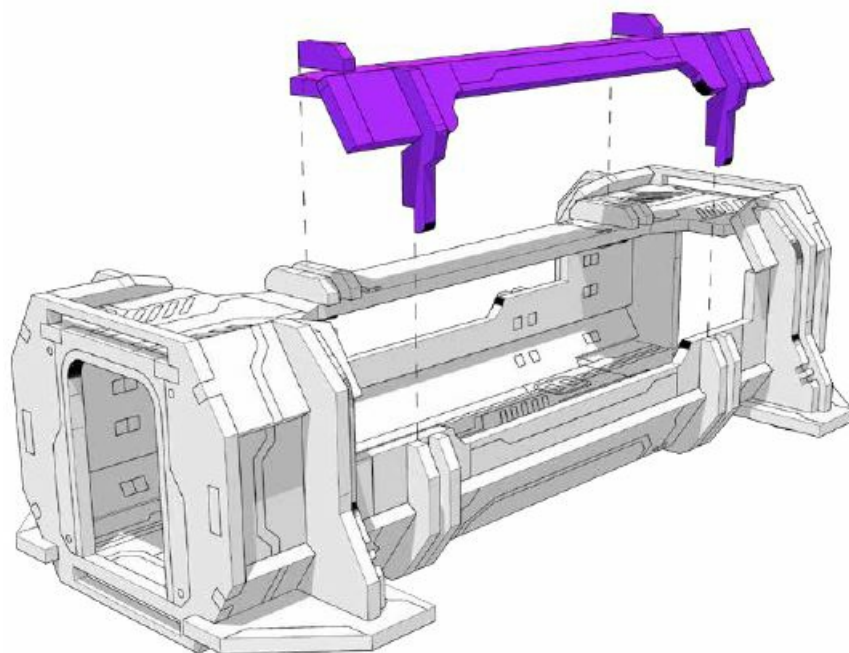
23



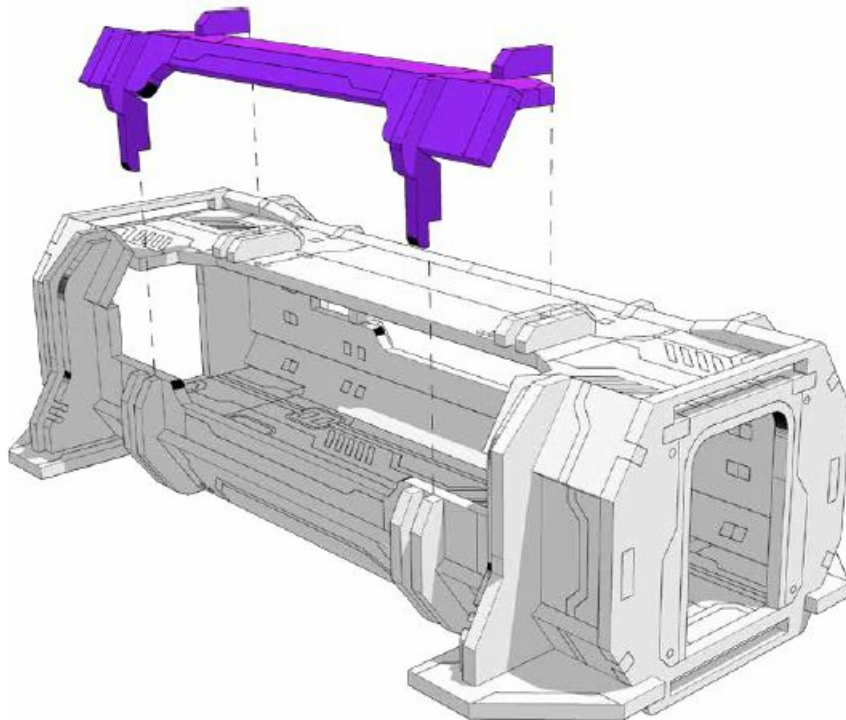
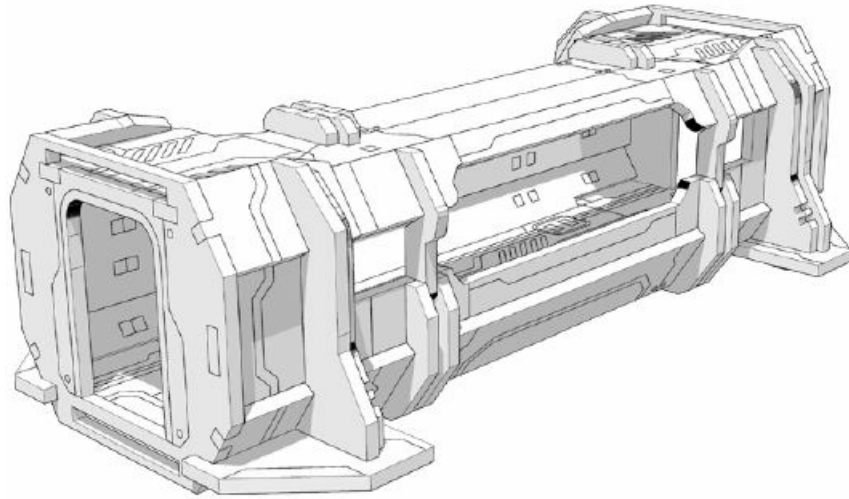
24

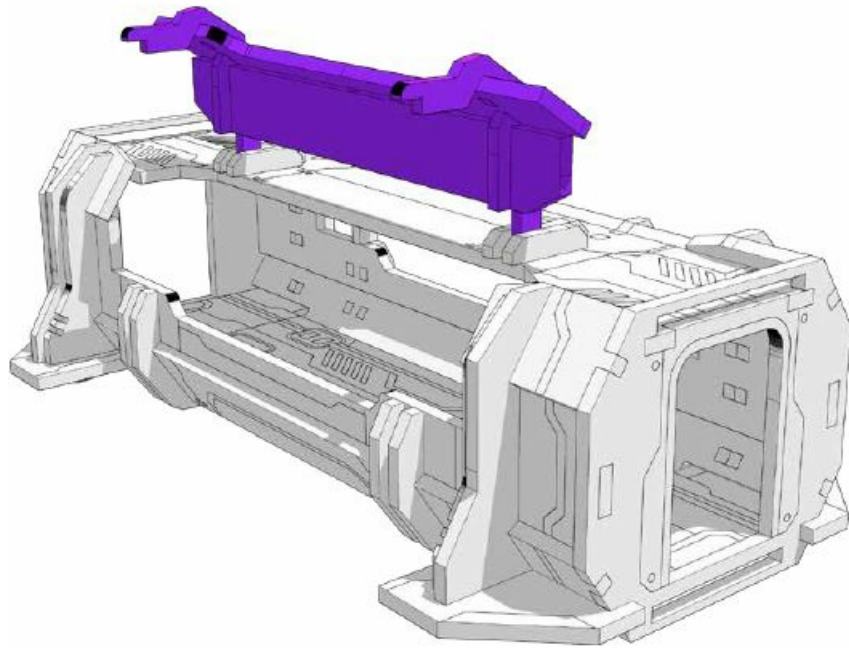


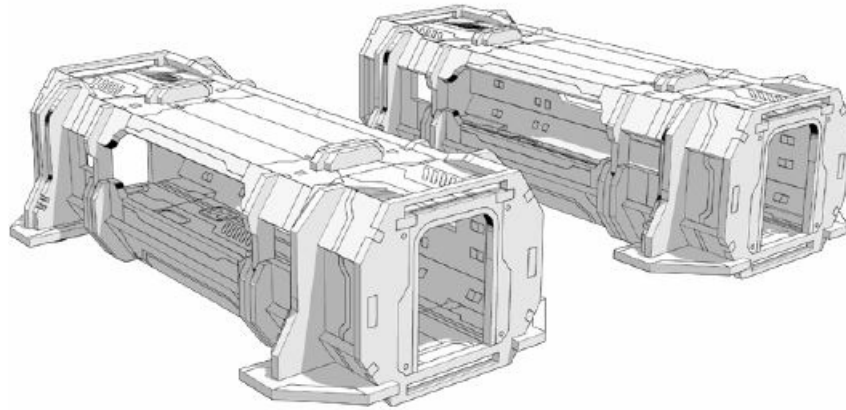
x2




See end of instructions for alternative layout







Documents / Resources

	<p>TTCOMBAT TTSCW-SFU-142 Mule Tunnel [pdf] Instruction Manual TTSCW-SFU-142 Mule Tunnel, TTSCW-SFU-142, Mule Tunnel, Tunnel</p>
---	--