



TTCOMBAT TTSCW-FSC-135 Dwarven Columns Instruction Manual

[Home](#) » [TTCOMBAT](#) » TTCOMBAT TTSCW-FSC-135 Dwarven Columns Instruction Manual 

Contents

- [1 TTCOMBAT TTSCW-FSC-135 Dwarven Columns](#)
- [2 Product Information](#)
- [3 Key Features](#)
- [4 Product Usage Instructions:](#)
- [5 INSTALLATION](#)
- [6 Documents / Resources](#)
- [7 Related Posts](#)



TTCOMBAT TTSCW-FSC-135 Dwarven Columns



Product Information

The TTSCW-FSC-135 Dwarven Columns are a set of decorative columns designed to add a touch of fantasy and

elegance to your living space. These columns are crafted with attention to detail and feature intricate dwarven-inspired designs.

Product Specifications:

- **Product Name:** TTSCW-FSC-135 Dwarven Columns
- **Model Number:** TTSCW-FSC-135
- **Material:** High-quality resin
- **Dimensions:** 10 inches (height) x 3 inches (diameter)
- **Weight:** 1.5 lbs

Key Features

- Intricate dwarven-inspired designs
- Durable and long-lasting construction
- Lightweight and easy to move
- Perfect for tabletop gaming, home decor, or themed events

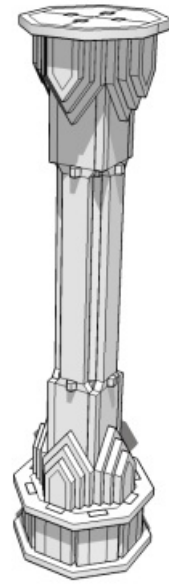
Product Usage Instructions:

1. **Placement:** Choose a suitable location for the TTSCW-FSC-135 Dwarven Columns, such as a tabletop, shelf, or display case.
2. **Assembly:** The columns come pre-assembled, so there is no need for any additional assembly.
3. **Cleaning:** To clean the columns, gently wipe them with a soft, damp cloth. Avoid using harsh chemicals or abrasive materials that may damage the surface.
4. **Decoration:** Use the TTSCW-FSC-135 Dwarven Columns to enhance the aesthetics of your living space. They can be placed individually or in a group to create a visually appealing arrangement.
5. **Versatility:** These columns are not only suitable for home decor but also make a great addition to tabletop gaming setups or themed events. Let your imagination run wild and incorporate them into your desired setting.
6. **Care:** Handle the columns with care to prevent any accidental damage. Avoid dropping or mishandling them, as they may break or chip.
7. **Storage:** If you need to store the columns when not in use, ensure they are placed in a safe and secure location to prevent any damage.

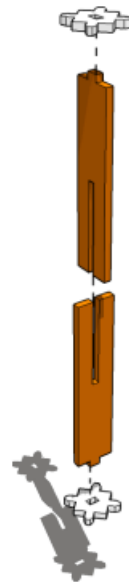
Follow these instructions to enjoy the beauty and functionality of the TTSCW-FSC-135 Dwarven Columns for years to come.

INSTALLATION

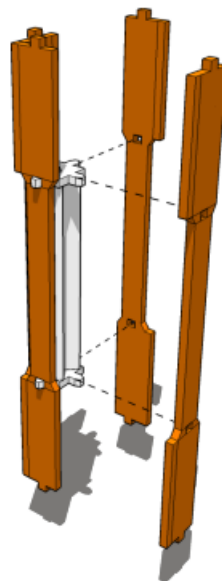
1



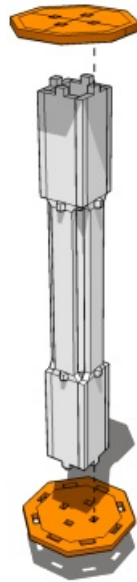
2



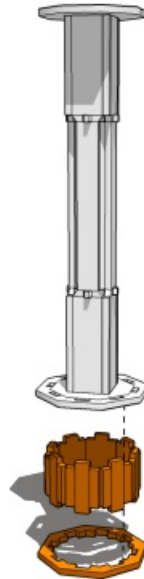
3



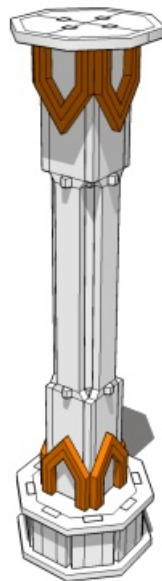
4



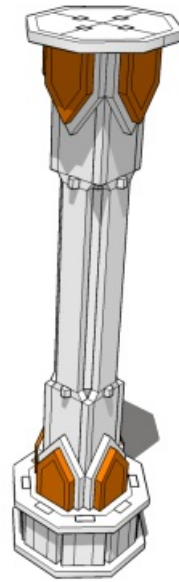
5



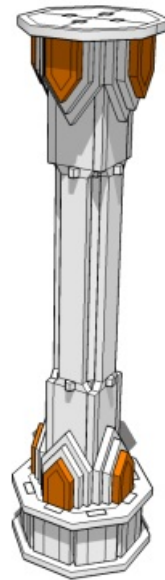
6



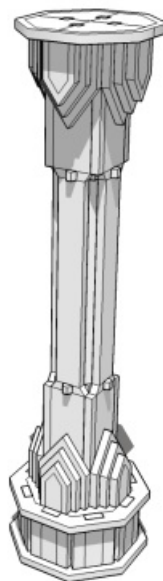
7



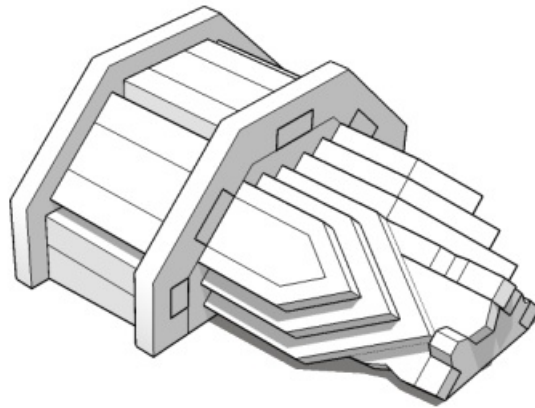
8



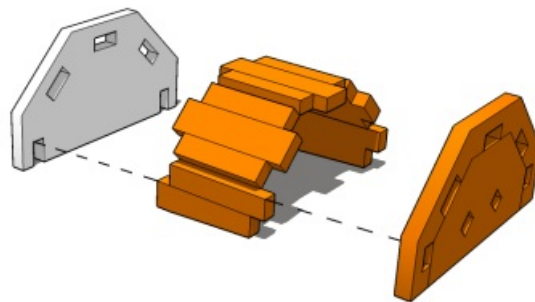
9



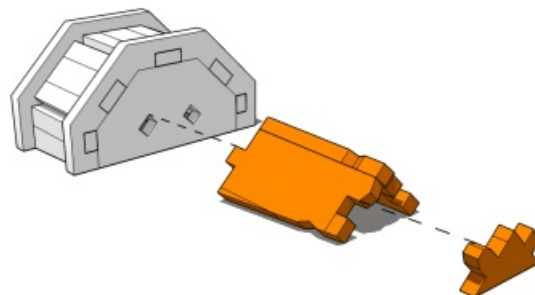
10



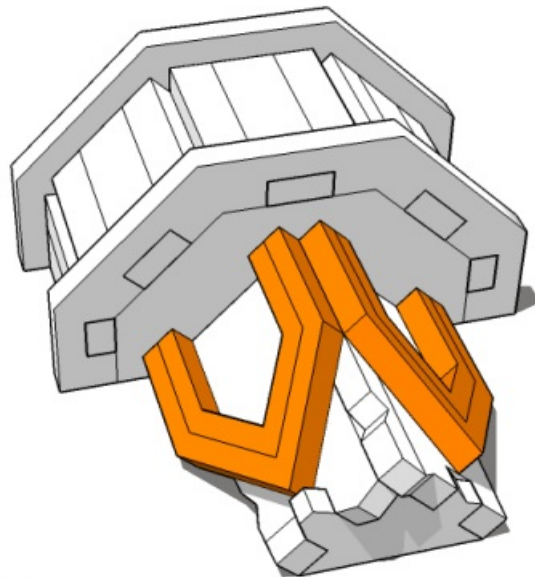
11



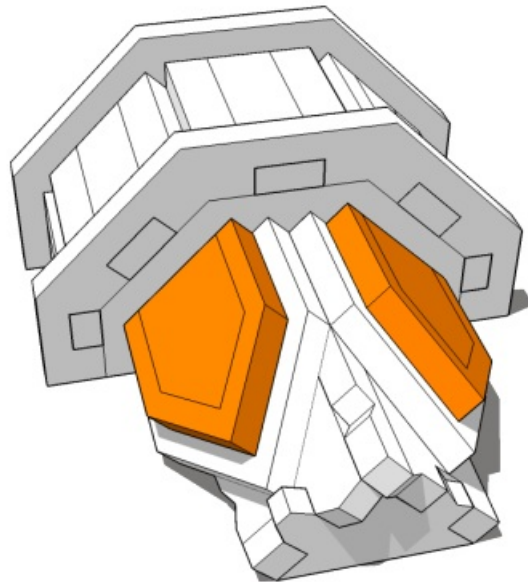
12



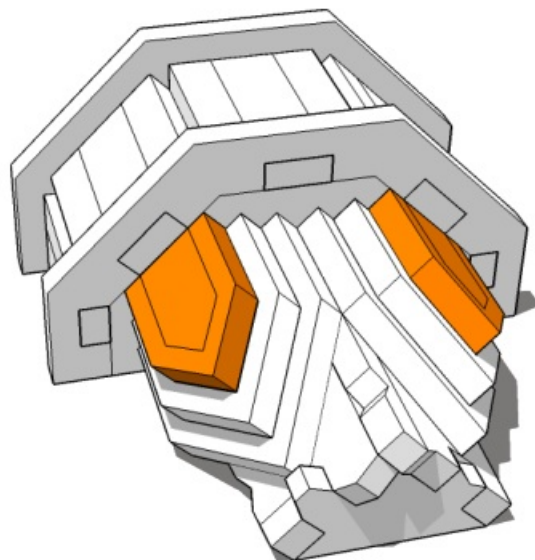
13



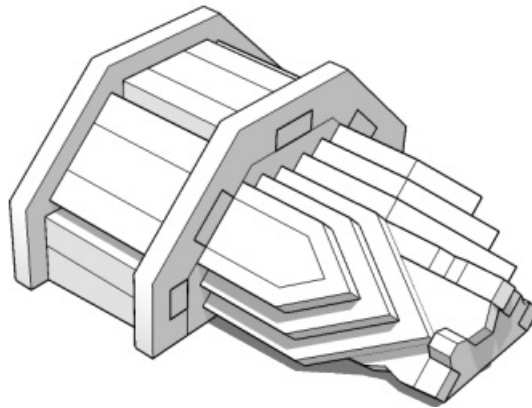
14



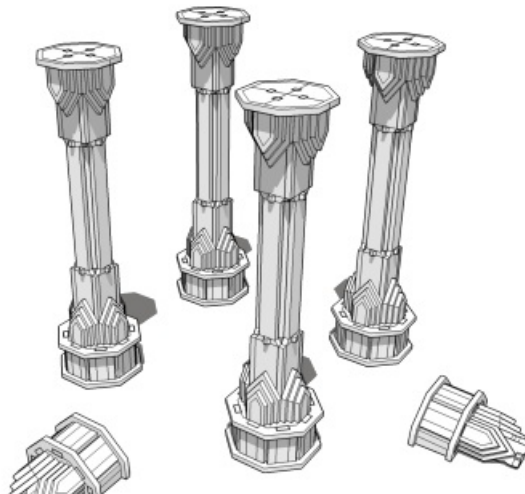
15



16



17



Documents / Resources



[TTCOMBAT TTSCW-FSC-135 Dwarven Columns](#) [pdf] Instruction Manual
TTSCW-FSC-135, TTSCW-FSC-135 Dwarven Columns, Dwarven Columns, Columns