

TSun
Smart App



TSUN Smart App User Guide

[Home](#) » [TSUN](#) » TSUN Smart App User Guide 

Contents

- 1 TSUN Smart App
- 2 End-user
- 3 REGISTER AN ACCOUNT
- 4 ADD DEVICE
- 5 WiFi CONFIGURATION
- 6 Distributor and Installer
- 7 Documents / Resources
 - 7.1 References



TSUN Smart App



End-user

End-user TSUN Smart

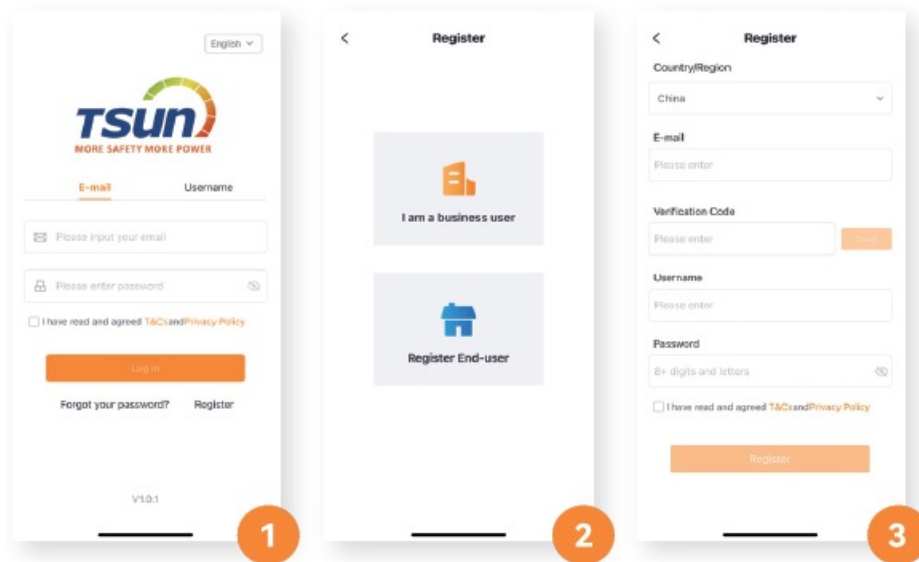
- Download “TSUN Smart” and install it on your smartphone



REGISTER AN ACCOUNT

The First Step

1. Click “Register” to create your account
2. Choose “End-user”
3. Fill in all registration details & read the T&C and Privacy Policy

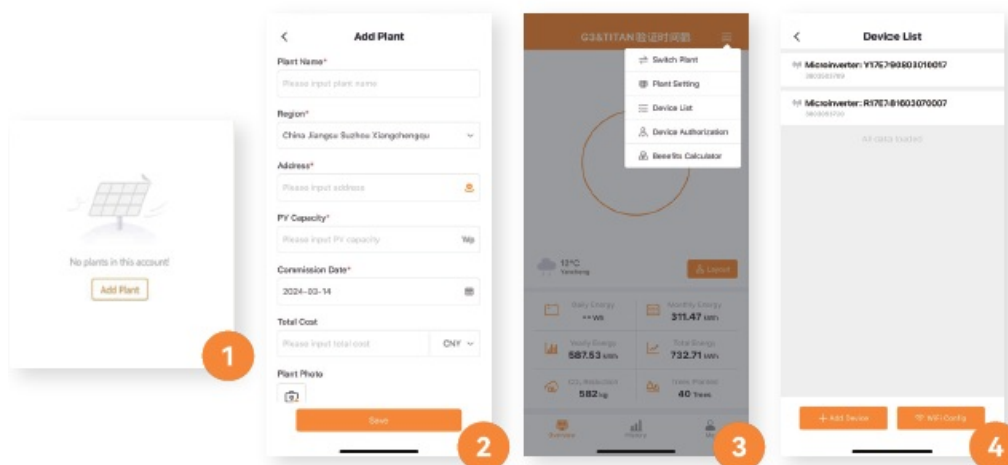


ADD DEVICE

The Second Step

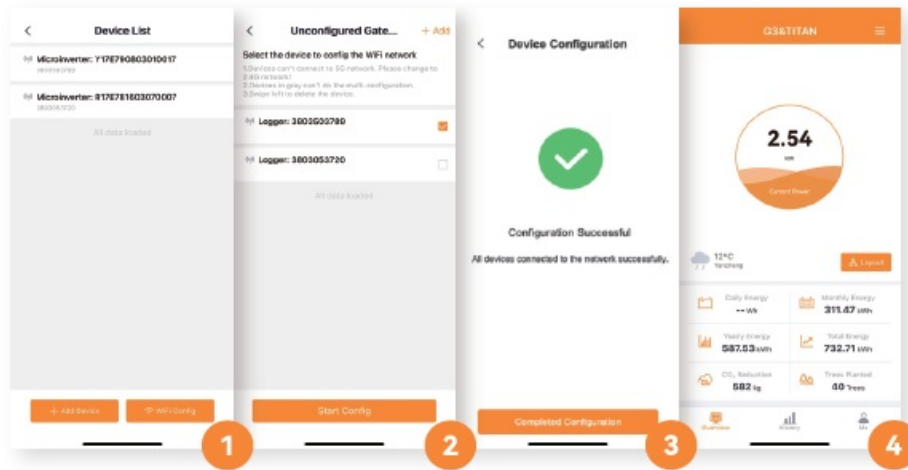
1. Click “Add Plant”
2. Fill in all details
3. Choose “Device List” from the main menu
4. Click “Add Device” & Scan the QR code

Note: Check the QR code on the back side of your microinverter



WiFi CONFIGURATION

The Third Step



Distributor and Installer

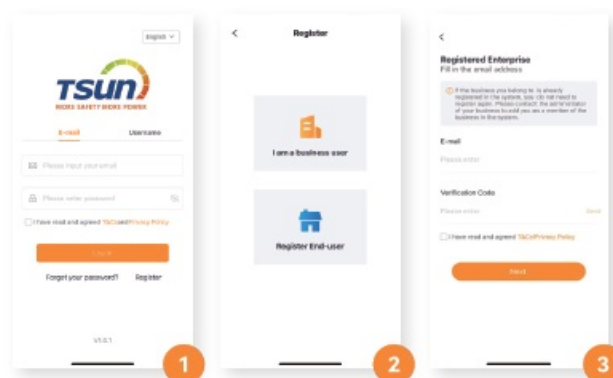
Distributor and Installer TSUN Smart

- Download “TSUN Smart” and install it on your smartphone



The First Step REGISTER AN ACCOUNT

1. Click “Register” to create your account
2. Choose “Distributor or Installer”
3. Fill in all registration details & read the T&C and Privacy Policy



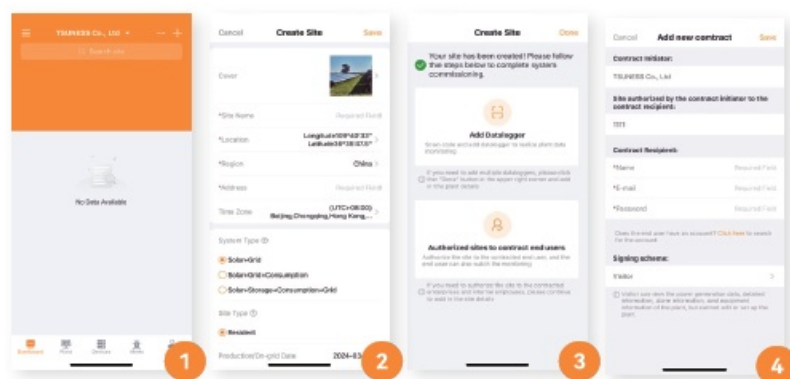
The Second Step ADD DEVICE

1. Click “+” & Create a plant
2. Fill in all details

3. Click “Add Datalogger” & Scan the QR code

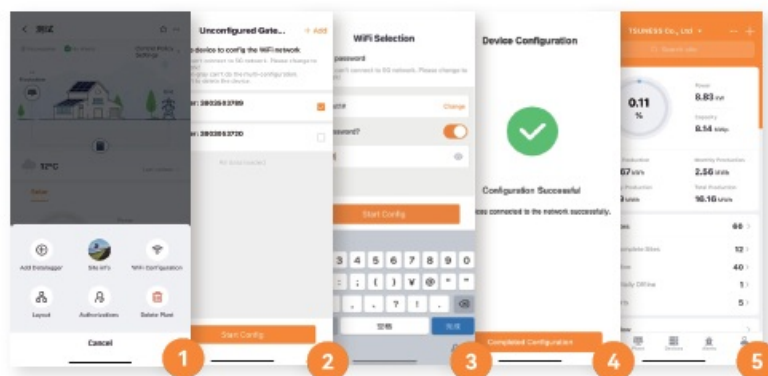
Note: Check the QR code on the back side of your microinverter

4. Click “Authorization” & Fill in all details for end-user




The Third Step WiFi CONFIGURATION

1. Click “WiFi Config” on the plant page
2. Select microinverters & Click “WiFi Config”
3. Choose WiFi & Enter the password
4. Wait for the network configuration
5. Relevant data will be shown in 10 mins



For more functional applications, please refer to the instructions in the APP.

Documents / Resources

	Tsun TSUN Smart App [pdf] User Guide TSUN, Smart, Multi, TSUN, Smart, TSUN Smart App, App
---	--

References

- [User Manual](#)

[Manuals+](#), [Privacy Policy](#)

This website is an independent publication and is neither affiliated with nor endorsed by any of the trademark owners. The "Bluetooth®" word mark and logos are registered trademarks owned by Bluetooth SIG, Inc. The "Wi-Fi®" word mark and logos are registered trademarks owned by the Wi-Fi Alliance. Any use of these marks on this website does not imply any affiliation with or endorsement.