



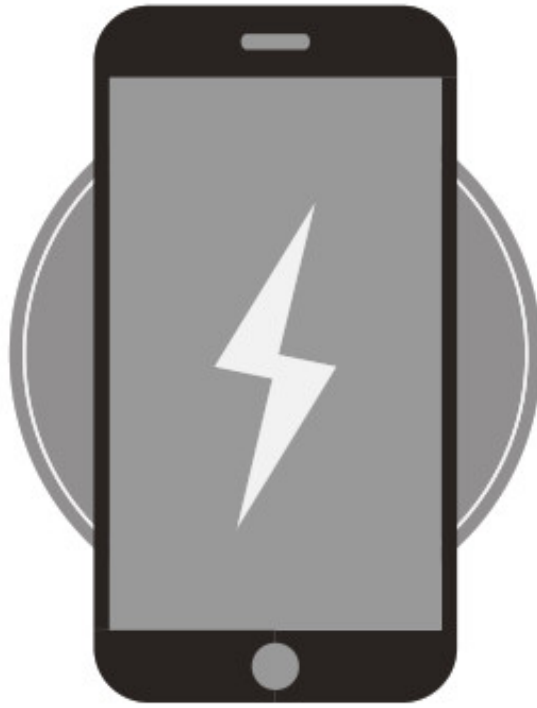
Tseetech QB06 Through Surface Wireless Charger Instructions

[Home](#) » [Tseetech](#) » Tseetech QB06 Through Surface Wireless Charger Instructions 



Tseetech

QB06
Through surface wireless charger

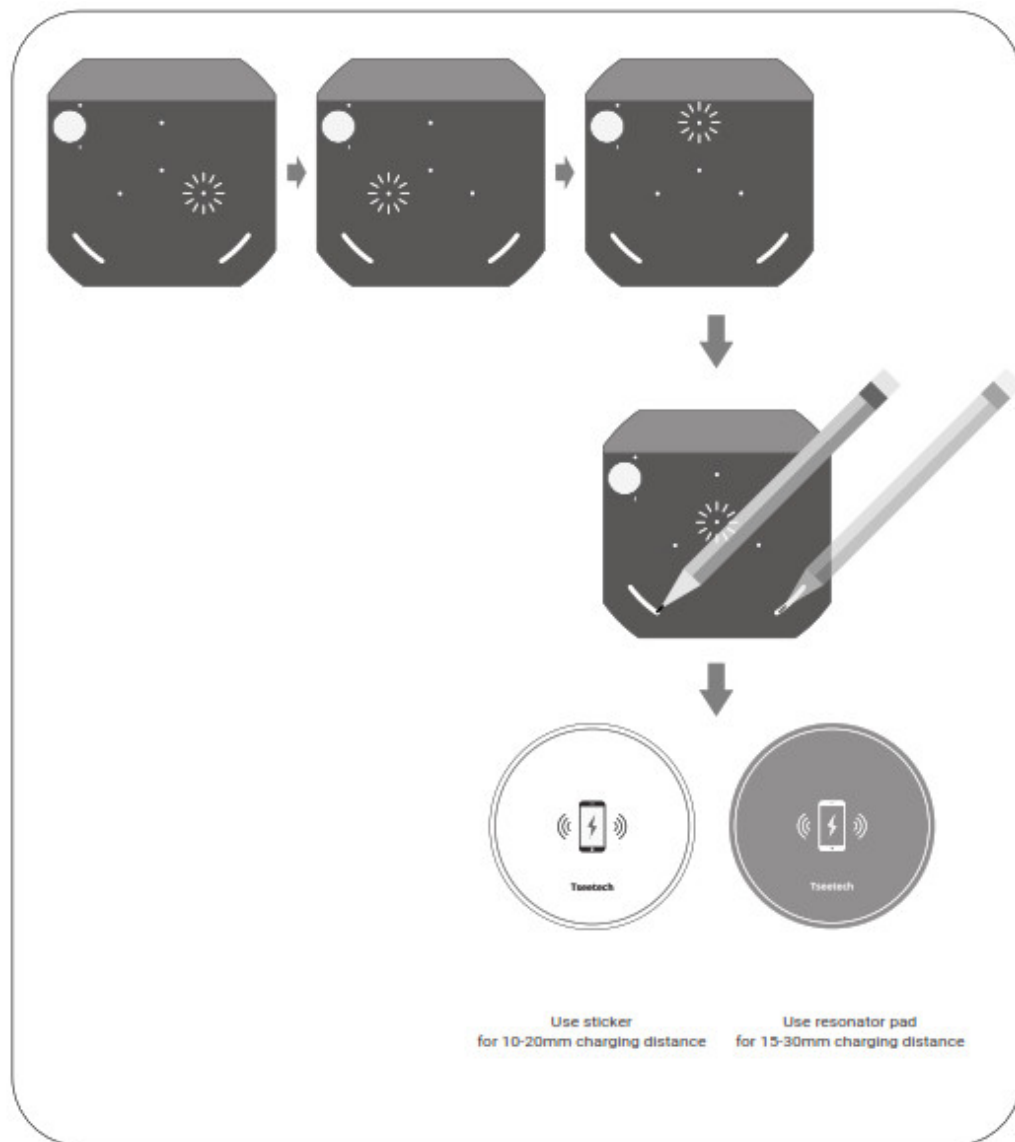
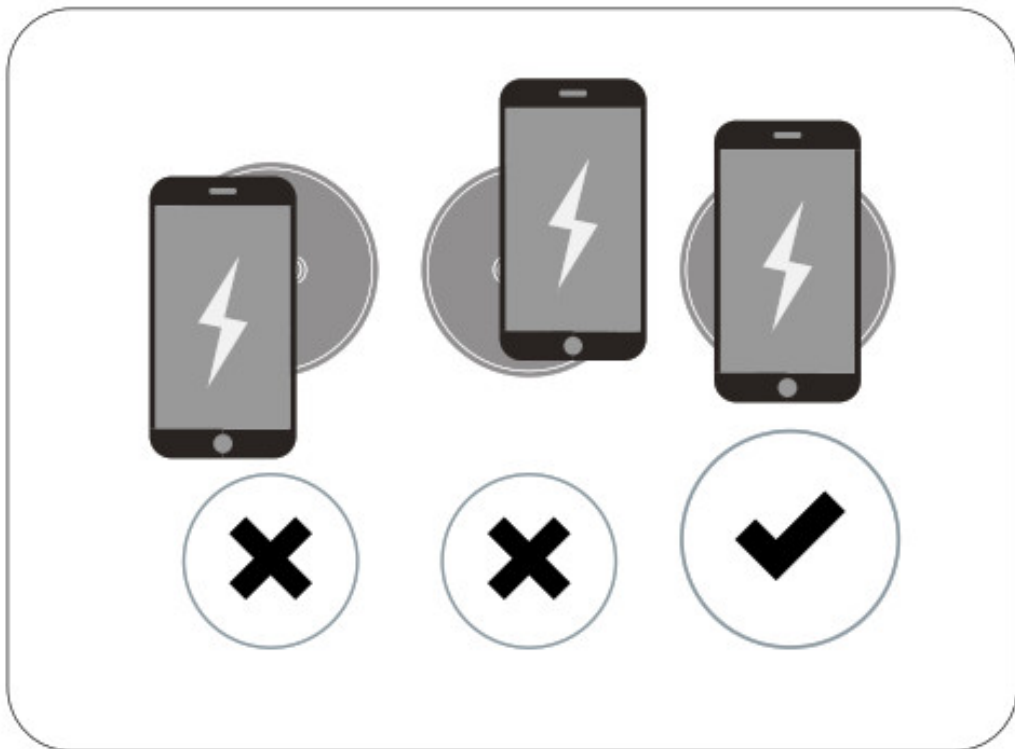


Contents

- [1 Installation](#)
- [2 Cautions](#)
- [3 FCC STATEMENT](#)
- [4 Contents](#)
- [5 Troubleshooting](#)
- [6 Documents / Resources](#)
- [7 Related Posts](#)

Installation

1. Clean the desk bottom.
2. Peel the film of the double-sided adhesive pad and stick it to the chosen place under the desk.
3. Use the align board to find the correct area for the sticker or resonator, make sure they're horizontally aligned, mark with a pencil.
4. Peel the film of the sticker or resonator pad (according to the charging distance), and paste it on the desktop where has been marked.
5. Plug in & power-on test.



Cautions

- Please do not install under the metal desktop.
- Avoid placing any metal/magnetic objects (keys, coins, credit cards, IC card, etc.) around the charger to prevent any damage.
- Please make sure there's no metallic material in the phone case.
- Please use the original power adapter for best performance.
- Do not expose the charger to liquids which might cause danger.
- Do not disassemble or modify the charger.
- Keep away from children.

FCC STATEMENT

This device complies with Part 15 of the FCC Rules. Operation is subject to the following two conditions:

1. this device may not cause harmful interference, and
2. this device must accept any interference received, including interference that may cause undesired operation.

Changes or modifications not expressly approved by the party responsible for compliance could void the user's authority to operate the equipment.

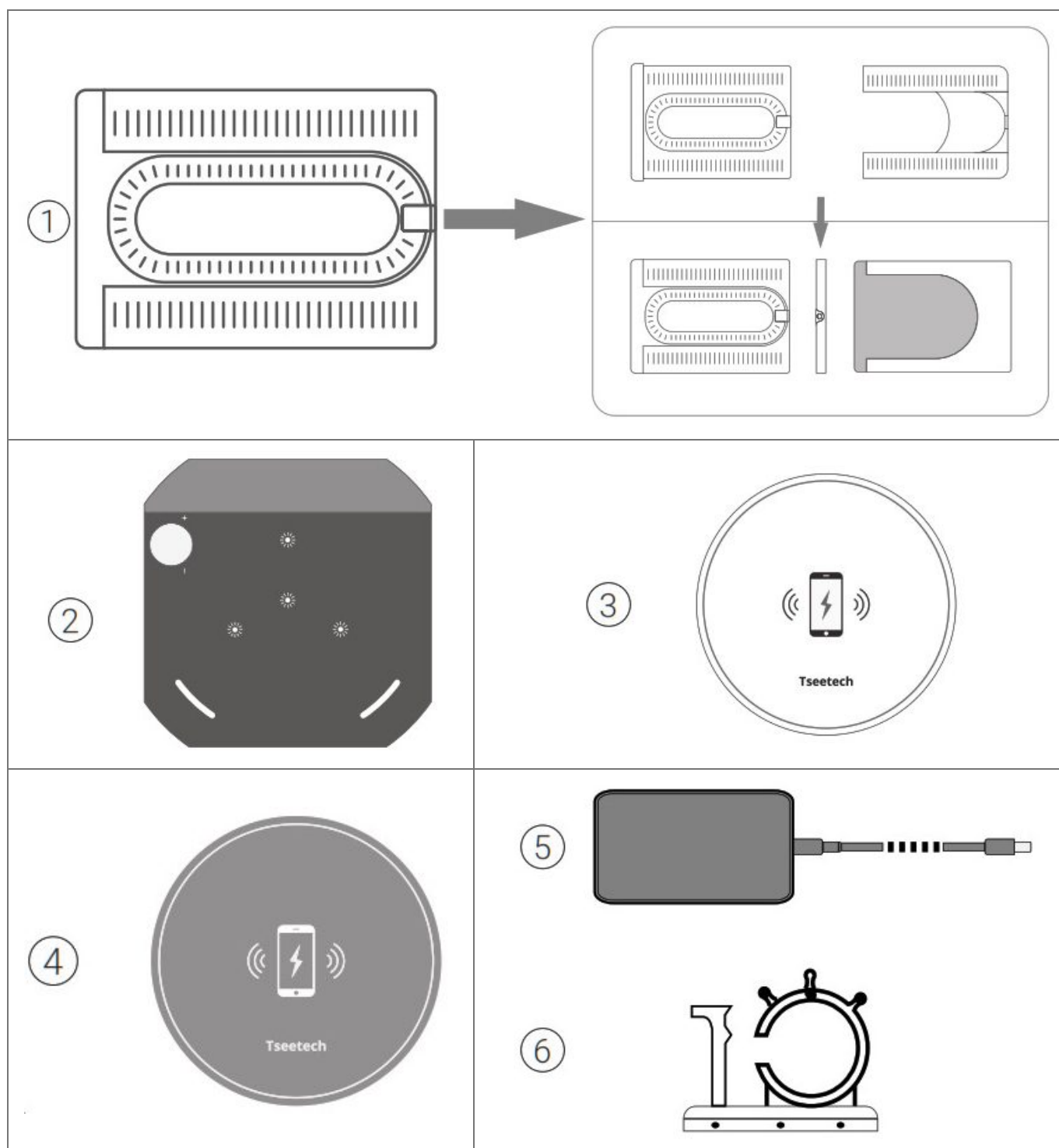
NOTE: This equipment has been tested and found to comply with the limits for a Class B digital device, pursuant to part 15 of the FCC Rules. These limits are designed to provide reasonable protection against harmful interference in a residential installation. This equipment generates uses and can radiate radio frequency energy and, if not installed and used in accordance with the instructions, may cause harmful interference to radio communications. However, there is no guarantee that interference will not occur in a particular installation. If this equipment does cause harmful interference to radio or television reception, which can be determined by turning the equipment off and on, the user is encouraged to try to correct the interference by one or more of the following measures:

- Reorient or relocate the receiving antenna.
- Increase the separation between the equipment and receiver.
- Connect the equipment into an outlet on a circuit different from that to which the receiver is connected.
- Consult the dealer or an experienced radio/TV technician for help

RF Exposure Warning Statements:

This equipment complies with FCC radiation exposure limits set forth for an uncontrolled environment. This equipment shall be installed and operated with minimum distance 20cm between the radiator & body.

Contents



1. Charger
2. Align board
3. Sticker

4. Resonator pad
5. Power adaptor
6. Cable clips

Troubleshooting

- Phone isn't charging/charging very slow. The phone's wireless charging coil is usually located in the middle of the phone, so it will activate the best performance when the phone is placed horizontally aligned with the sticker (or resonator). Please also check the material of the phone case, make sure there's no metal material being used.

- **How does the desk thickness impact the charging?**

Thickness should be between 15-30mm, resonator is needed if it is between 30-50mm.

- **Is it compatible with other products, such as airpod or Apple Watch?**

Since the coil sizes are different, only support mobile phone.

- **LED indicator interpretation:**

Slowly On/Off Blue: The charger is in standby mode, ready to use.

Solid Blue: The charger is in charging mode.

Red: Error! – FOD: foreign object is detected, please remove the foreign object.

- Phone is too close: Keep the distance greater than 15mm.

- Non-Compatible Phone.

- Support all Qi-BPP compatible phones 5W iPhone fast charge 7.5W Samsung fast charge 10W

- **Protection:** OCP, OVP, OTP, FOD

- **Power input:** 19V, 0.94A

- **Charging distance:** 10-20mm, with sticker 15-30mm, with resonator pad

Shenzhen Ciji Technology Co., Ltd



Address: 1807, Unit 1, Overseas Chinese Scholars Venture Building,
No.29, Gaoxin South Ring Road, Nanshan District, Shenzhen, Guangdong, China

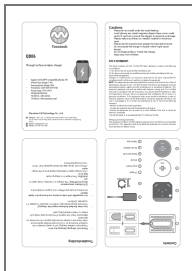


Email: info@tseetech.com



Phone: +86 755 26417632

Documents / Resources



[Tseetech QB06 Through Surface Wireless Charger](#) [pdf] Instructions
QB06, 2AVL7QB06, QB06, Through Surface Wireless Charger