



TSC PRINTRONIX AUTO ID Setting Printer Parameters Automatically with Job Instruction Manual

[Home](#) » [TSC PRINTRONIX AUTO ID](#) » TSC PRINTRONIX AUTO ID Setting Printer Parameters Automatically with Job Instruction Manual 

TSC PRINTRONIX AUTO ID Setting Printer Parameters Automatically with Job Instruction Manual



Contents

- [1 Introduction](#)
- [2 Background](#)
- [3 Steps](#)
- [4 Now let's add in the printer commands](#)
- [5 Documents / Resources](#)
 - [5.1 References](#)

Introduction

In today's rapidly expanding supply chain world, automation can assist with productivity, speed results, and reduce errors. Sometimes automation requires significant investment of capital and an overhaul of processes. Yet sometimes automation can be accomplished for free and with minimal effort.

This Tech Tips discusses a powerful automation hack that is simple and free. It allows you to send printer parameters along with the print job to ensure that your printer is optimized for the job. All without any printer operator intervention.

Background

TSC Printronix Auto ID printers are standards in highvolume label production typically found in shipping docks, warehouses, and manufacturing locations. Their rugged construction and legendary reliability help ensure maximum printer life and minimal issues. In addition to their robust design, they also provide significant flexibility in operation through a wide range of settings including label alignment adjustments, thermal printhead temperature adjustments, label presentation options, and data stream compatibility settings, to name just a few.

These settings can be stored together as a configuration file. Up to eight configuration files may be saved and stored in the printer to provide flexibility in job setup. Loading the configuration file before a print job ensures that the printer is optimized for that job. This is a simple step at the printer operator panel; however, it would be optimal to have the configuration file loaded at the beginning of every job automatically, so the operator didn't have to intervene. We've made this easy to do.

Steps

In this example we will be using BarTender to create a template and send the print configuration information as part of the job.

The label template is basic. It is simply a list of barcode examples and different x-dimension sizes demonstrating the significant space savings that 2D barcodes can provide on a label:

Example of a 1D Barcode 10-mil



Example of a 1D Barcode 5-mil



Example of a 2D barcode at 20-mil



Example of a 2D barcode at 15-mil



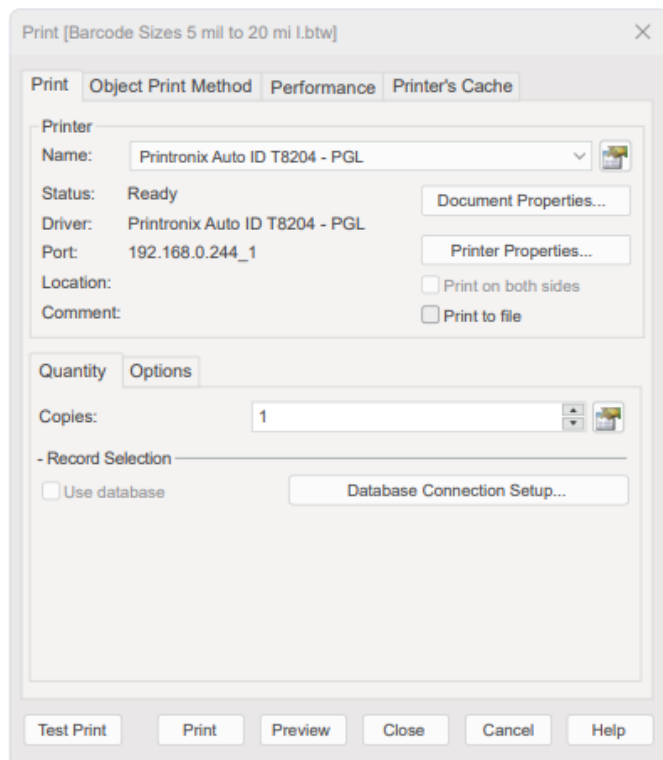
Example of a 2D barcode at 10-mil



Example of a 2D barcode at 5-mil

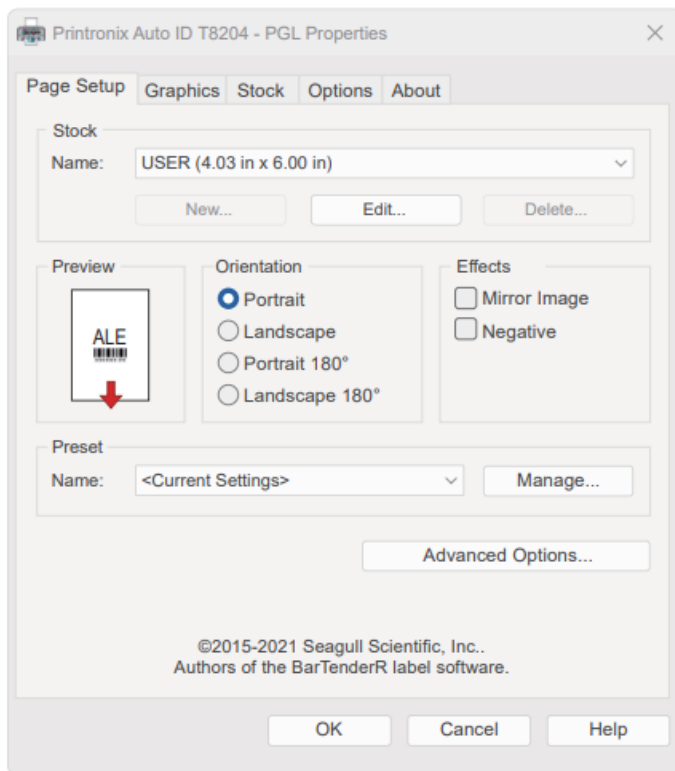


Once the label is created, we select File-Print which brings up the following dialog box:

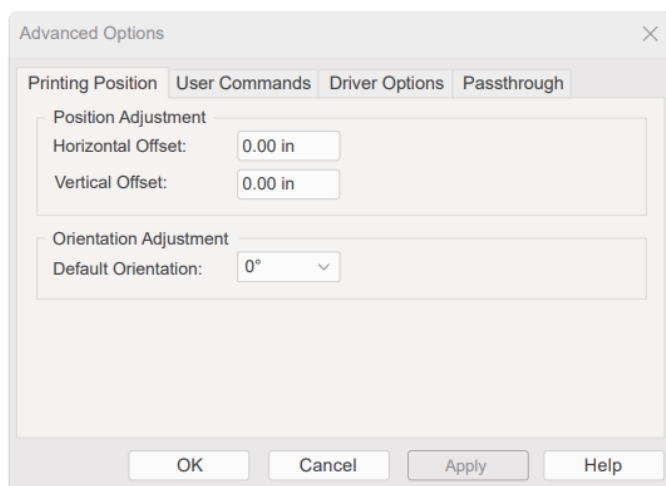


Now let's add in the printer commands

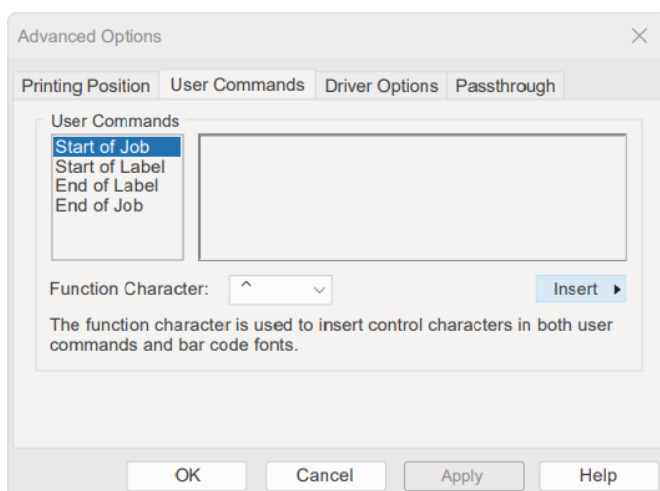
1. Press Document Properties



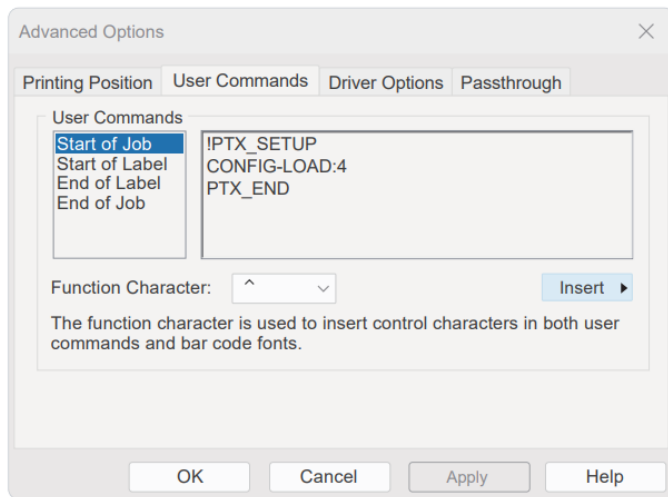
2. Press Advanced Options



3. Press User Commands



4. Input the PTX_SETUP commands desired: (For a full list of possible PTX_SETUP commands, please see 258745M_PTX_ADMIN_T8.pdf. [WHERE CAN THE USER FIND THIS MANUAL?]) In this case we are going to use the following to load Configuration 2 for this job.



- a** Press Start of Job
 - b** Type: !PTX_SETUP
 - c** CONFIG-LOAD;4
 - d** PTX_END
 - e** Press Apply
 - f** Press OK
 - g** Press OK on the next menu
 - h** Press Print on the Print menu to execute the job.
5. Be sure to save the template. Your added commands will be saved with the job.
- Next time you run the job, printing the job will set the printer automatically into Configuration 2. If desired, you can also add commands at the end of the job to reset the configuration to Configuration 1 or another configuration as desired.
- You can also provide a print job number adding additional information if you are using PXML to capture real-time information about the device status, job status, and grading data from barcodes if using ODV.

Summary

Automating printer setup commands in the job itself can help reduce operator intervention and ensure the printer is optimized for the particular form or job.

The setup is easy and can be done through standard label software.

CORPORATE HEADQUARTERS

TSC Auto ID Technology Co., Ltd.

Tel: +886 2 2218 6789

E-mail: apac_sales@tscprinters.com

LI ZE PLANT

TSC Auto ID Technology Co., Ltd.

Tel: +886 3 990 6677

E-mail: apac_sales@tscprinters.com

CHINA

Tianjin TSC Auto ID Technology Co., Ltd.

Tel: +86 22 5981 6661

E-mail: apac_sales@tscprinters.com

ASIA PACIFIC

TSC Auto ID Technology Co., Ltd.

Tel: +886 2 2218 6789

E-mail: apac_sales@tscprinters.com

KOREA

TSC Korea Representative Office

Tel: +82 2 852 3322

E-mail: apac_sales@tscprinters.com

INDIA

TSC India Representative Office

Tel: +91 2249 679 315

E-mail: apac_sales@tscprinters.com

EMEA

TSC Auto ID Technology EMEA GmbH

Tel: +49 (0) 8106 37979 000

E-mail: emea_sales@tscprinters.com

RUSSIA

TSC Auto ID Technology EMEA GmbH

Tel: +7 495 646 3538

E-mail: emea_sales@tscprinters.com

MIDDLE EAST

TSC Auto ID Technology ME Ltd, FZE

Tel: +971 4 2533 069

E-mail: emea_sales@tscprinters.com

AMERICAS

TSC Auto ID Technology America Inc.

Tel: +1 657 258 0808

E-mail: americas_sales@tscprinters.com

MEXICO

TSC Mexico Representative Office

Tel: +1 52 (33) 3673 1406

E-mail: americas_sales@tscprinters.com

BRAZIL

TSC Brazil Representative Office


Tel: +55 (11) 3554 7225

E-mail: americas_sales@tscprinters.com

©2023 TSC Auto ID Technology Co., Ltd. All Rights Reserved. TSC Printronix Auto ID tscprinters.com



Documents / Resources

	TSC PRINTRONIX AUTO ID Setting Printer Parameters Automatically with Job [pdf] Instruction Manual Setting Printer Parameters Automatically with Job, Printer Parameters Automatically with Job, Parameters Automatically with Job, Automatically with Job, Job
---	---

References

- [User Manual](#)

[Manuals+](#), [Privacy Policy](#)

This website is an independent publication and is neither affiliated with nor endorsed by any of the trademark owners. The "Bluetooth®" word mark and logos are registered trademarks owned by Bluetooth SIG, Inc. The "Wi-Fi®" word mark and logos are registered trademarks owned by the Wi-Fi Alliance. Any use of these marks on this website does not imply any affiliation with or endorsement.