



Trust ZPIR-8000 Motion Sensor User Manual

[Home](#) » [Trust](#) » Trust ZPIR-8000 Motion Sensor User Manual 

Trust.

PREMIUM-LINE

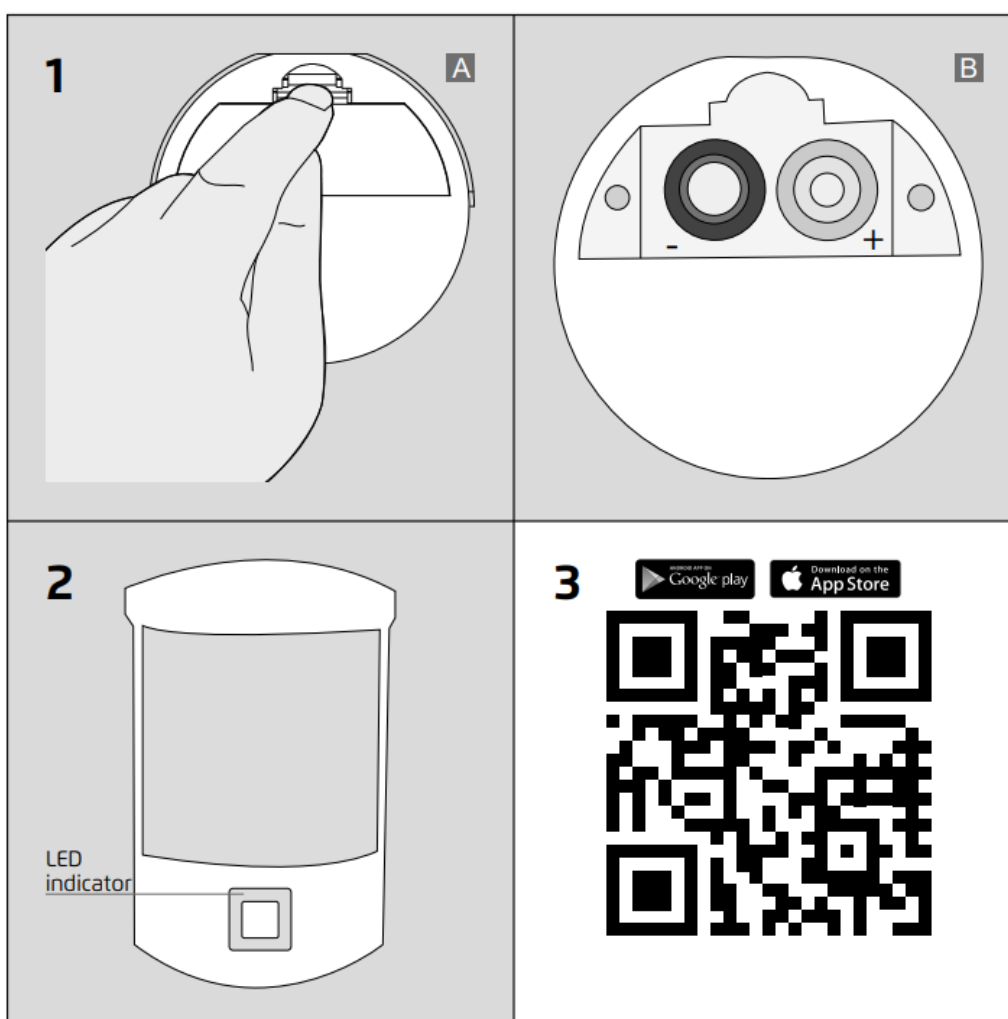
Item 71170 Version 1.0

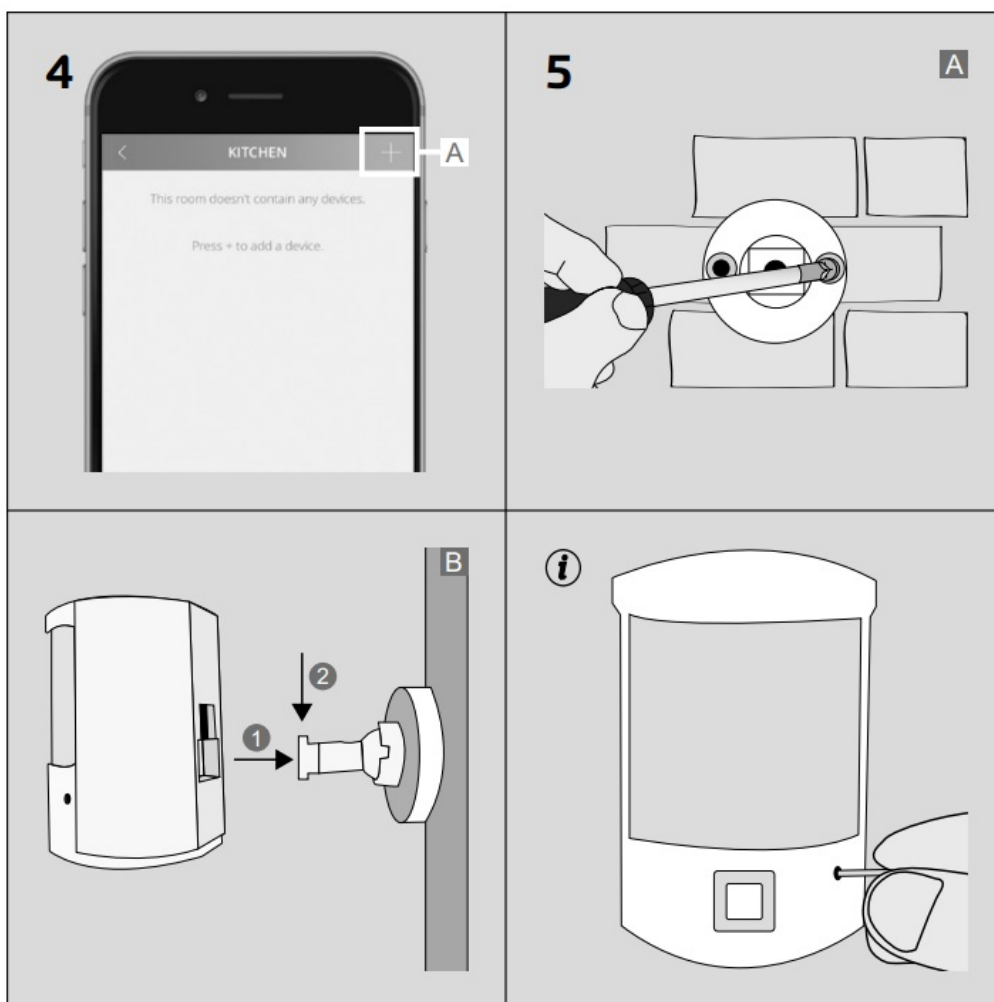
**Always read the instructions
before using this product
ZPIR-8000 Motion Sensor
User Manual**

Contents

- [1 ZPIR-8000 Motion Sensor](#)
- [2 COMPATIBILITY](#)
- [3 \(RE\)PLACE THE BATTERIES](#)
- [4 INDICATORS](#)
- [5 DOWNLOAD APP](#)
- [6 CONNECT SENSOR](#)
- [7 MOUNT THE SENSOR](#)
- [8 Documents / Resources](#)
 - [8.1 References](#)
- [9 Related Posts](#)

ZPIR-8000 Motion Sensor





COMPATIBILITY

The sensor works with the Z1 ZigBee Bridge and the ICS-2000/Smart Bridge.

(RE)PLACE THE BATTERIES

A Remove the battery cover from the sensor.

B Place 2x AAA batteries (not included) in the sensor. Note the positive and negative polarity in the compartment. Close the battery cover.

INDICATORS

The sensor contains a LED indicator (This is not a button) to show the status of the sensor. Please see below the meaning of the different LED indications.

LED FUNCTION TABLE

Connection mode	LED will flash once per second for approximately 1 min. (After 1 min the LED will stop flashing)
Connected successfully	LED will stop flashing (The App will also indicate when the connection is successful)
Sensor reset	LED will flash fast (for 2 seconds)
Sensor triggered (When motion is detected)	LED will flash once

DOWNLOAD APP

To connect the sensor with a Z1 ZigBee bridge or ICS-2000/Smart Bridge, first, get the App by scanning the QR code or go to [trust.com/ Zigbee](http://trust.com/Zigbee) and install it.

CONNECT SENSOR

A In the App, select a room, press the button, and follow instructions. For manual setup of push notifications go to the rules tab, press the + button, and select notification wizard.

MOUNT THE SENSOR

A Mount the arm of the sensor on a flat surface and secure it with the included screws.

B 1 Place the sensor on the mounting arm.

2 Secure the sensor by pulling it down on the mounting arm.



RESET SENSOR AND ACTIVATE CONNECT MODE



Warning: This step will remove the sensor from the Z1 ZigBee Bridge or the ICS-2000/Smart Bridge. To reset the sensor press the button in the hole at the side of the sensor for approximately 5 sec with the included pin. The LED will flash fast to confirm the reset.

Activate connect mode: After resetting the sensor you can activate the connect mode by pressing the button for approx. 1 sec. The LED will flash for 1 minute to indicate the connection mode.

The wireless range increases when you add more ZigBee products (meshing). To learn more about meshing go to trust.com/zigbee

Trust.

www.trust.com/zigbee

Documents / Resources



[Trust ZPIR-8000 Motion Sensor](#) [pdf] User Manual
ZPIR-8000, Motion Sensor, ZPIR-8000 Motion Sensor, Sensor

References

- [t. Trust.com - Home](#)
- [t. Trust.com - Contact & Support - Installation of ZigBee products](#)
- [t. Trust.com - Contact & Support - Installation of ZigBee products](#)

Manuals+.