



Trust ZCM-1800 ZIGBEE Smart Build-In Switch User Manual

[Home](#) » [Trust](#) » Trust ZCM-1800 ZIGBEE Smart Build-In Switch User Manual

Contents [[hide](#)]

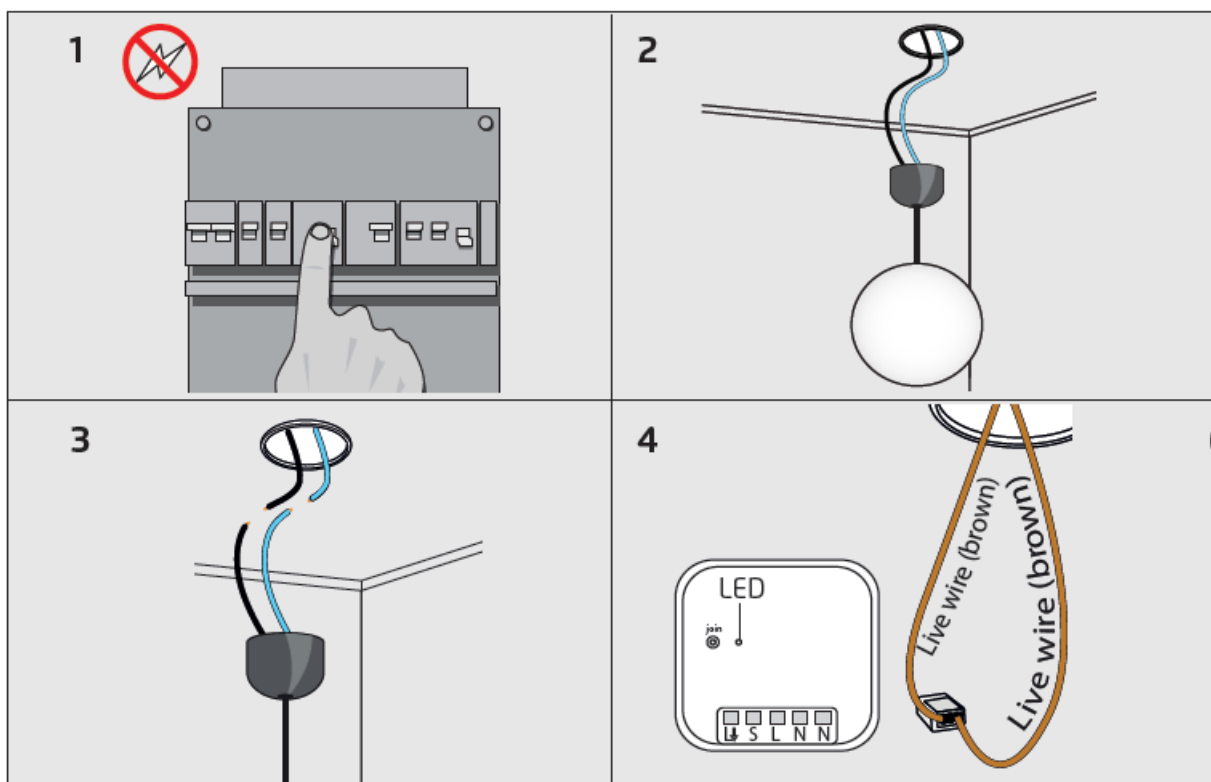
- 1 Trust ZCM-1800 ZIGBEE Smart Build-In Switch
- 2 INSTALLATION INSTRUCTION
- 3 Turn OFF mains power
- 4 Loosen ceiling lights
- 5 Disconnect the switch wire (black) and neutral wire (blue)
- 6 Connect the live wire to a terminal block
- 7 Connect the wires to the module
- 8 Double wall switch installation diagram
- 9 Single wall switch installation diagram
- 10 Download App
- 11 Switch on the mains voltage
- 12 Connect Module
- 13 Optional: Also connect with Zigbee remote control
- 14 Install module
- 15 Activate connection mode
- 16 Reset ZCM-1800
- 17 Safety Instructions
- 18 Documents / Resources
 - 18.1 References
- 19 Related Posts

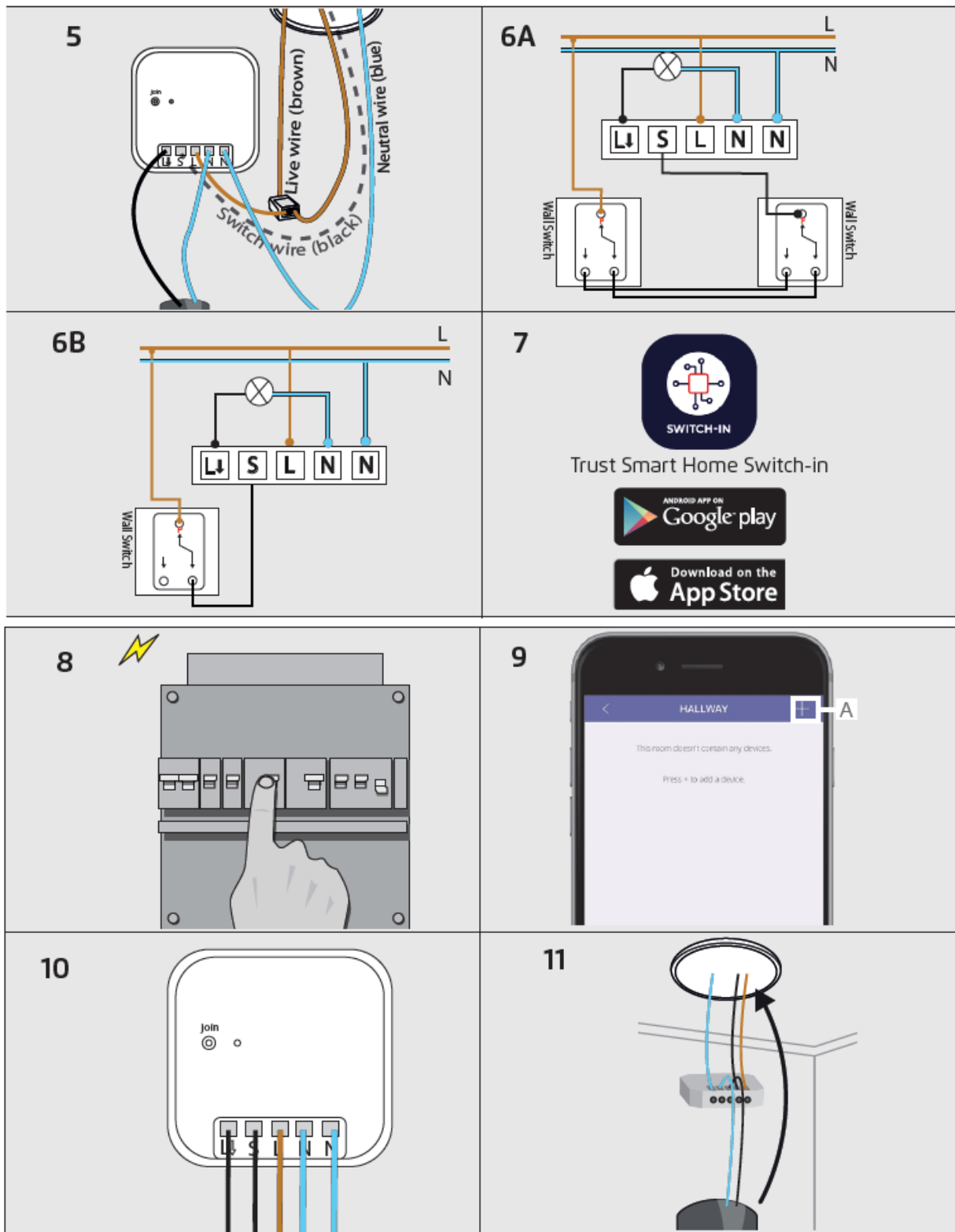
Trust.

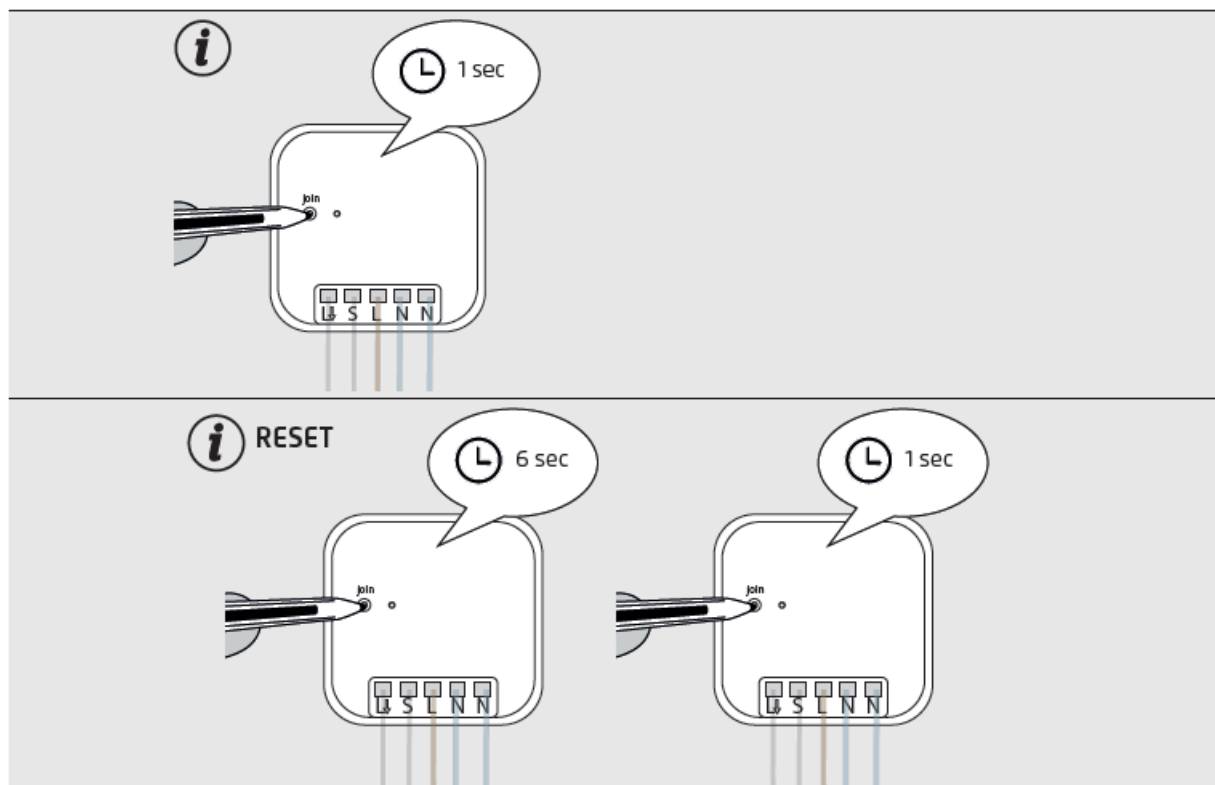
Trust ZCM-1800 ZIGBEE Smart Build-In Switch



INSTALLATION INSTRUCTION







Turn OFF mains power

Always turn OFF the power (in the fuse box) before installing or removing this product. The ZCM-1800 can be used for two wall switches connected to one lamp (stairwell/hotel circuit) or for a single wall switch connected to one lamp.

Loosen ceiling lights

Remove the existing lighting from the ceiling and leave the wires connected to the lighting. The lighting must not exceed the maximum wattage. If no live wire (brown) is present, it must be pulled. If in doubt, consult an electrician.

Disconnect the switch wire (black) and neutral wire (blue)

To install the ZCM-1800, disconnect the switch wire (black) and neutral wire (blue) from the lamp. (Disconnect terminal block or cut wires if necessary) If in doubt about wire colors, consult an electrician.

Connect the live wire to a terminal block

Connect the live wire (brown) from the ceiling box to a terminal block. Also connect the other end of the live wire (brown) to same terminal block.

Connect the wires to the module

Connect the neutral wire (blue) from the ceiling box to the outer [N] contact of the module.

Optional: The S-contact does not need to be connected. Connect the switch wire (black) from the ceiling box to the [S] terminal if you want to (continue to) make use of a wall switch. Connect the neutral wire (blue) of the lamp with the center [N] contact. Connect the switch wire (black) of the lamp to the [L] contact. Connect one new live wire (brown) from the terminal block to the [L] terminal. Tighten the terminal screws securely.

Double wall switch installation diagram

This is the technical installation diagram of the ZCM-1800 with two wall switches (hotel / stairwell circuit).

Single wall switch installation diagram

This is the technical installation diagram of the ZCM-1800 with one wall switch.

Download App

Download and install the Trust Smart Home Switch-in App from the Google Playstore or App Store to connect the switch to an Smart Bridge or ICS-2000.

Switch on the mains voltage

Turn on the power before proceeding with the installation. Do not touch any stripped parts of the wires after this step. The LED indicator on the module will flash for 60s when power is on to indicate it is in connect mode

Connect Module

A Select a room in the App. Press the + button and choose Trust Smart Home. Press Premium Line and choose built-in switch. Then follow the steps in the App.

Optional: Also connect with Zigbee remote control

Go to www.trust.com/faq for more information on how the switch can be connected with a zigbee remote control.

Install module

First check whether the lighting switches properly. Place the switch in the ceiling box. Reinstall the lamp. Make sure that you can always reach the built-in switch, for example to reset it or to reconnect it.

Activate connection mode

If the ZCM-1800 is not connected to an Smart Bridge or ICS-2000, you can enter the connection mode by pressing the join button shortly on the module. The LED will flash slowly for 60s to indicate it is in connect mode

Reset ZCM-1800



Warning: This step removes the module from the Smart Bridge or ICS-2000 or the ZYCT-202. To reset the switch, press the join button for 6 seconds. The LED will flash quickly. Shortly press the button again. The connected lamp will go ON-OFF-ON-OFF to confirm the reset and then enter connect mode.

Safety Instructions

Product support: www.trust.com/71318. Warranty conditions: www.trust.com/warranty To ensure safe handling of the device, follow the safety advice on: www.trust.com/safety The Wireless range is strongly dependent on local conditions such as the presence of HR glass and reinforced concrete Never use Trust Smart Home products for life-support systems. This product is not water-resistant. Do not attempt to repair this product. Wire colors may vary per country. Contact an electrician when in doubt about wiring. Never connect lights or equipment that exceed the maximum load of the receiver. Exercise caution when installing a receiver voltage may be present, even when a receiver is switched off. Maximum radio transmit power: 1.59 dBm. Radio transmission frequency range: 2400-2483.5 MHz Disposal of packaging materials – Dispose of packaging materials which are no longer

needed in accordance with applicable local regulations. Disposal of the device – The adjacent symbol of a crossed-out wheelie bin means that this device is subject to Directive 2012/19/EU. Disposal of batteries – Used batteries may not be disposed of in household waste. Only dispose of batteries when they are fully discharged. Dispose of batteries according to local regulations. Trust Electronics Ltd. declares that item number 71318/71318-02 is in compliance with Directive Electromagnetic Compatibility Regulations 2016, Radio Equipment Regulations 2017. The full text of the declaration of conformity is available at the following internet address: www.trust.com/compliance Trust International B.V. declares that item number 71318/71318-02 is in compliance with Directive 2014/53/EU – 2011/65/EU. The full text of the EU declaration of conformity is available at the following web address: www.trust.com/compliance

Documents / Resources

	Trust ZCM-1800 ZIGBEE Smart Build-In Switch [pdf] User Manual ZCM-1800 ZIGBEE Smart Build-In Switch, ZCM-1800, ZIGBEE Smart Build-In Switch, Smart B uild-In Switch, Build-In Switch, Switch
	Trust ZCM-1800 ZIGBEE Smart Build In Switch [pdf] User Manual ZCM-1800 ZIGBEE Smart Build In Switch, ZCM-1800, ZIGBEE Smart Build In Switch, Smart B uild In Switch, In Switch

References

- [Trust.com - Contact & Support - Compliance](#)
- [Trust.com - Home](#)
- [Trust.com - Home](#)
- [Trust.com - Contact & Support - Compliance](#)
- [Trust.com - Contact & Support - Safety information](#)
- [Trust.com - Contact & Support - Warranty conditions](#)