



# Trust ZCC-3500 Wireless Socket Switch User Manual

[Home](#) » [Trust](#) » Trust ZCC-3500 Wireless Socket Switch User Manual 

## Trust ZCC-3500 Wireless Socket Switch User Manual

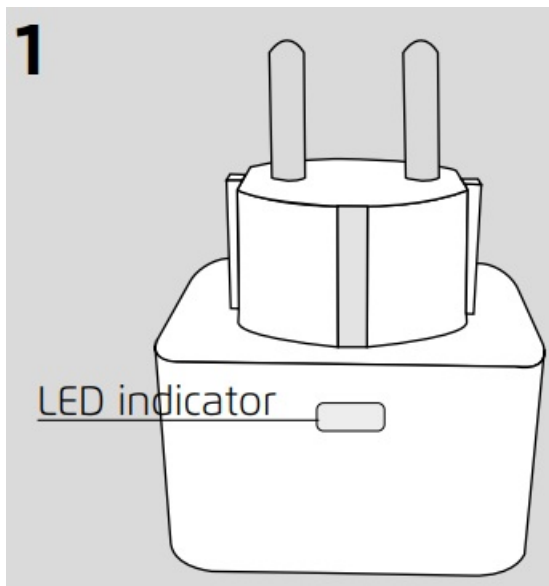


### Contents

- [1 LED INDICATOR](#)
- [2 DOWNLOAD APP](#)
- [3 PLACE SOCKET SWITCH](#)
- [4 CONNECT DETECTOR](#)
- [5 OPTIONAL: ALSO CONNECT WITH ZYCT-202 REMOTE CONTROL](#)
- [6 MANUAL ON-OFF SWITCHING](#)
- [7 Documents / Resources](#)
  - [7.1 References](#)
- [8 Related Posts](#)

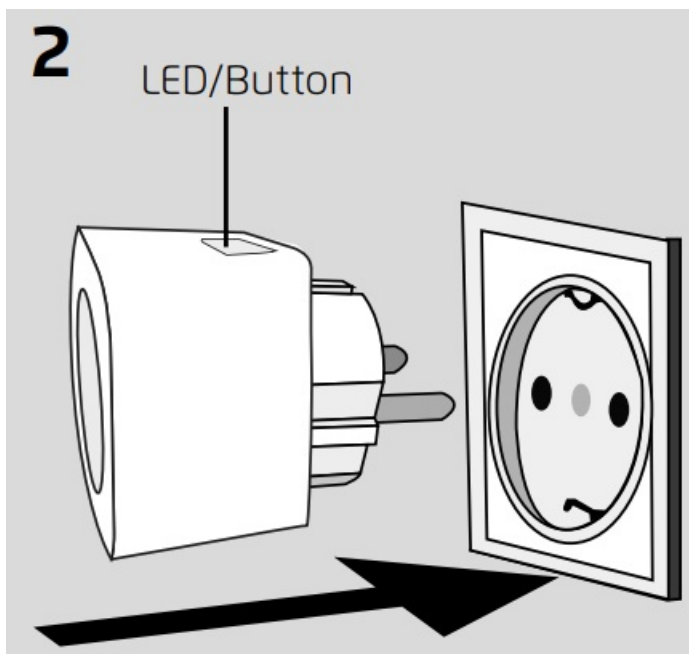
## LED INDICATOR

The switch contains an LED indicator to show the status. See the meaning of the different LED indications below.



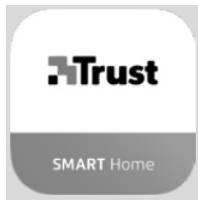
## LED FUNCTION TABEL

Connect mode	LED blinks 1x every 4 seconds
Connected	LED blinks 3x (Switch turns ON-OFF-ON-OFF-ON)
Reset switch	LED blinks fast



## DOWNLOAD APP

First download and install the Trust Smart Home App from the Google Playstore or App Store to connect the switch to an ICS-2000/Smart Bridge or Z1 ZigBee bridge.



## PLACE SOCKET SWITCH

Place the switch in an outlet.

## CONNECT DETECTOR

A In the App, select a room, press the + button and choose Zigbee line/Zigbee On-OFF switch and follow the instructions. For manual set up of push-notifications go to the rules tab, press the + button and select notification wizard.twisting it.



## OPTIONAL: ALSO CONNECT WITH ZYCT-202 REMOTE CONTROL

To use the switch with the ZYCT-202 and the App follow below steps.

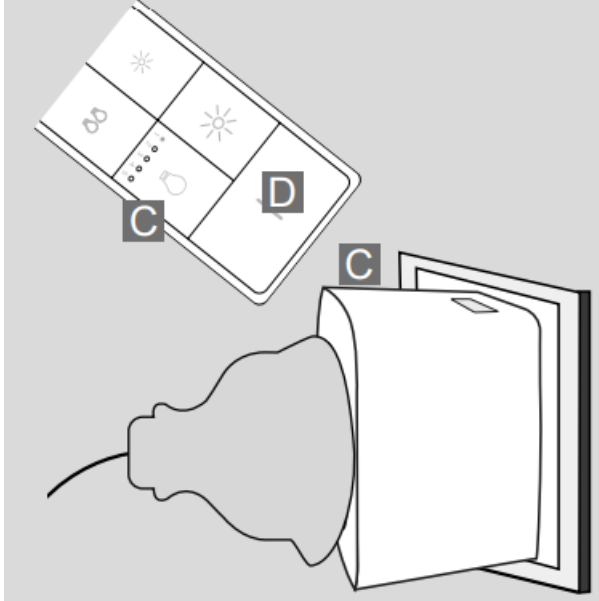
A Make sure the ZCC-3500 is paired with the App. (See chapter 4).

B Connect the ZYCT-202 with the App. (Follow the instructions in the App to pair the ZYCT-202).

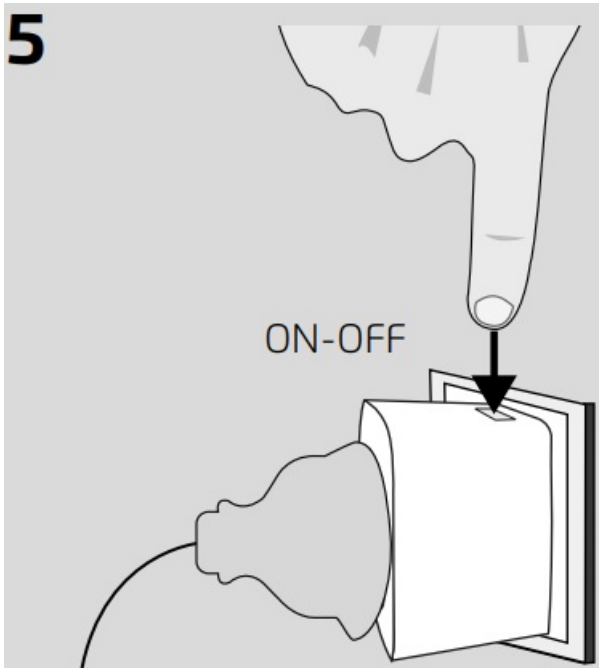
C Connect the ZYCT-202 with the ZCC-3500 by selecting a channel and holding the ZYCT-202 against (or as close as possible to) the switch.

D Then press and hold the ZYCT-202 ON button until the switch switches ON-OFF-ONOFF-ON (clicks 5x).

## 4 OPTIONAL



**i** To operate the ZCC-3500 only with the ZYCT-202, follow steps C and D from chapter 5. **Note:** Make sure the switch is not in connection mode (LED flashes slowly). Stop the connection mode by briefly pressing the button on the housing. The LED on the switch stops flashing. After this follow steps C and D from chapter 5.



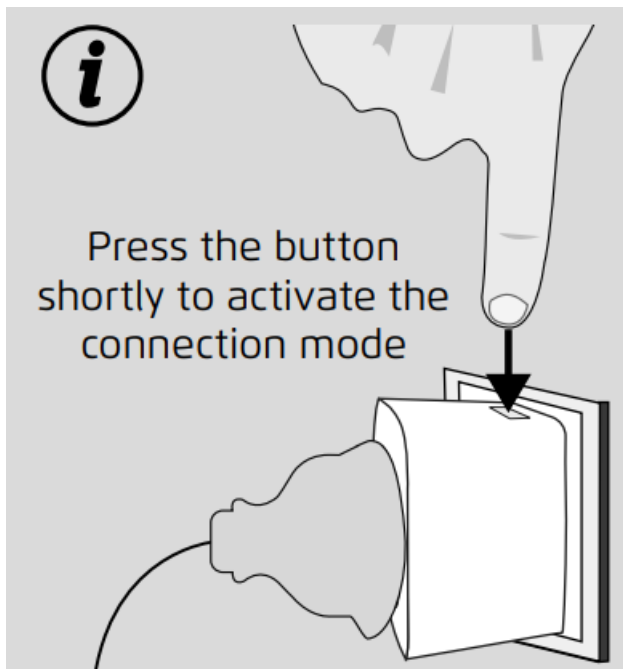
### MANUAL ON-OFF SWITCHING

With the ZCC-3500 you can also manually switch your lighting / device ON or OFF by pressing the button on the housing.

**i** **ACTIVATE CONNECTION MODE FOR ZIGBEE CONTROL STATION (LIKE ICS-2000/SMART BRIDGE / Z1)**

If the switch is not connected to a control station, you can activate the connection mode by shortly pressing the button on the housing of the switch.

The LED flashes slowly to indicate that it is in connection mode.



### RESET SWITCH




**Warning:** With this step, the switch is removed from the control station and/or the ZYCT-202. To reset the switch, press the button for 6 seconds. The LED will flash quickly. Press the button again briefly. The socket switches ON and OFF 2x to confirm it is reset and then activates the connection mode.

The wireless range increases if you add more zigbee products (meshing). Go to [trust.com/zigbee](https://trust.com/zigbee) for more information about meshing.

Item 71255 Version 1.0

Always read the instructions before using this product

## Documents / Resources

	<p><a href="#">Trust ZCC-3500 Wireless Socket Switch</a> [pdf] User Manual ZCC-3500, Wireless Socket Switch, ZCC-3500 Wireless Socket Switch</p>
---	--

## References

-  [Trust.com - Home](#)
-  [Trust.com - Contact & Support - Installation of ZigBee products](#)
-  [Trust.com - Contact & Support - Installation of ZigBee products](#)