



Trust ZCC-3500 Socket Switch With Status Display User Manual

[Home](#) » [Trust](#) » Trust ZCC-3500 Socket Switch With Status Display User Manual 

Trust.

PREMIUM-LINE
ZCC-3500



USER MANUAL
WIRELESS SOCKET SWITCH
ZCC-3500

Contents

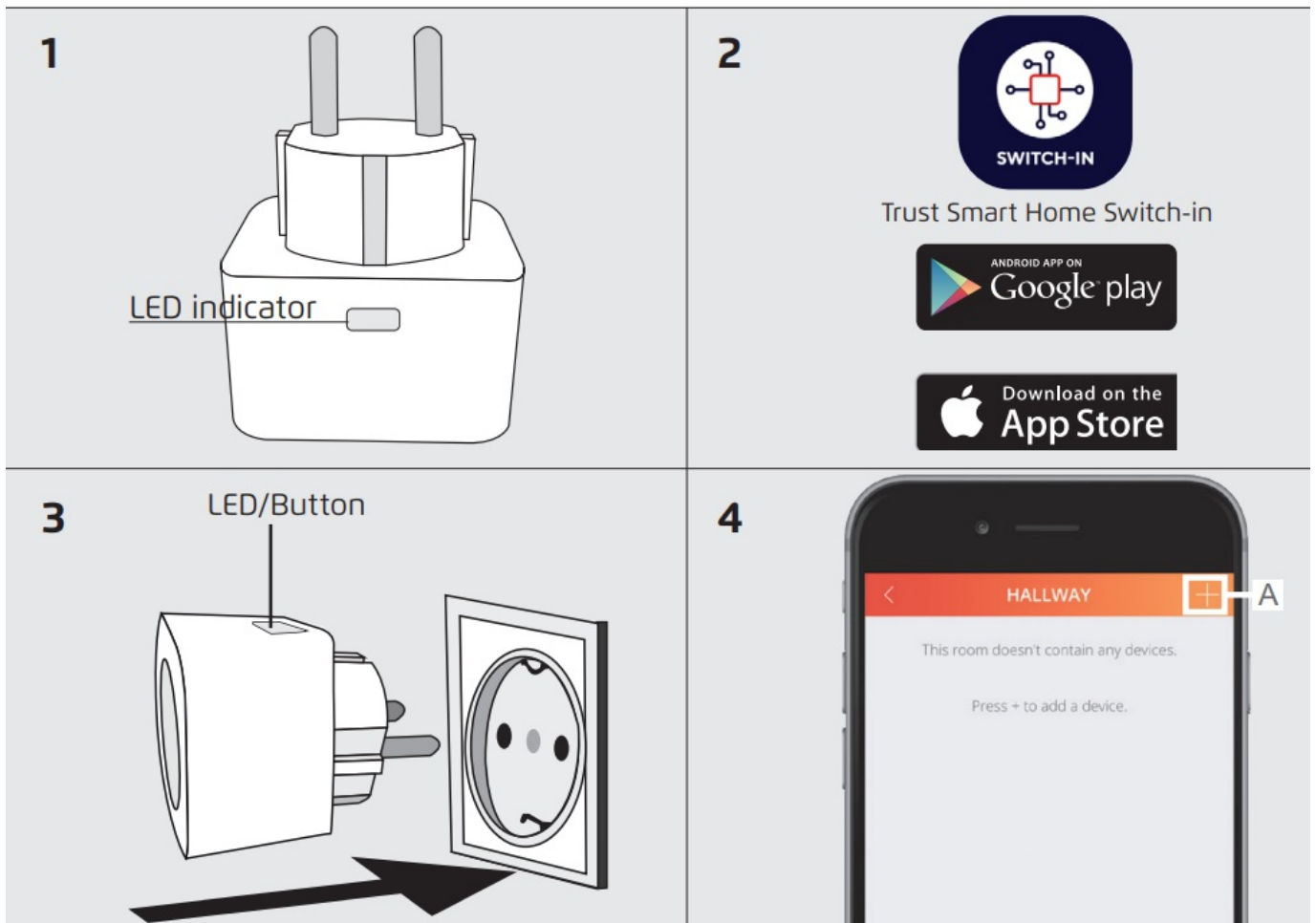
- [1 ZCC-3500 Socket Switch With Status Display](#)
- [2 LED INDICATOR](#)
- [3 DOWNLOAD APP](#)
- [4 PLACE SOCKET SWITCH](#)
- [5 CONNECT DETECTOR](#)
- [6 OPTIONAL: ALSO CONNECT WITH ZYCT-202 REMOTE CONTROL](#)
- [7 MANUAL ON-OFF SWITCHING](#)
- [8 Safety Instructions](#)
- [9 TECHNICAL SPECIFICATIONS](#)
- [10 Documents / Resources](#)
 - [10.1 References](#)
- [11 Related Posts](#)

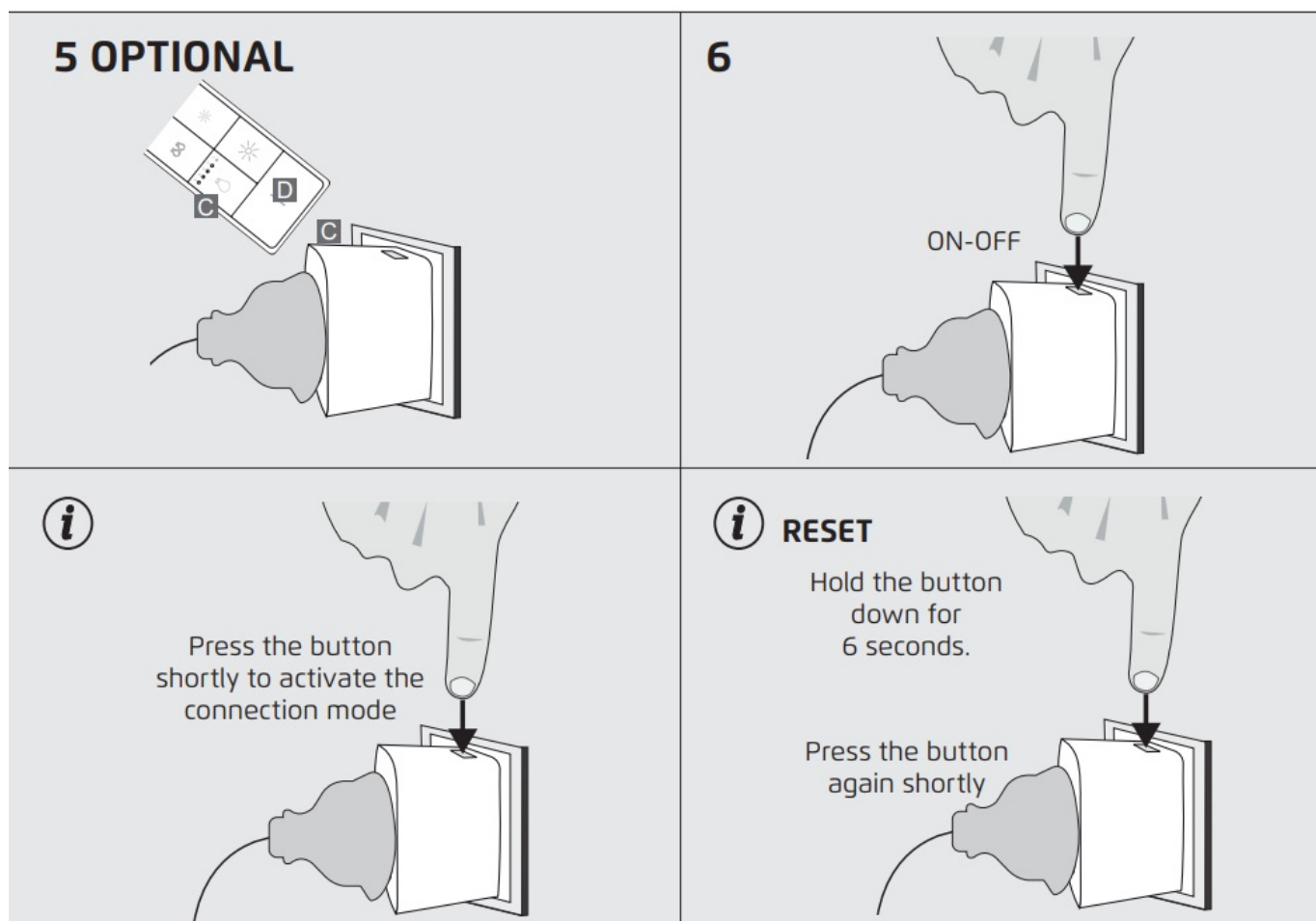
ZCC-3500 Socket Switch With Status Display



Item 71255 Version 1.0

Always read the instructions before using this product





LED INDICATOR

The switch contains an LED indicator to show the status. See the meaning of the different LED indications below.

LED FUNCTION TABEL

Connect mode	LED blinks 1x every 4 seconds
Connected	LED blinks 3x (Switch turns ON-OFF-ON-OFF-ON)
Reset switch	LED blinks fast

DOWNLOAD APP

First download and install the Trust Smart Home Switch-in App from the Google Playstore or App Store to connect the switch to an ICS-2000/Smart Bridge or Z1 ZigBee bridge.

PLACE SOCKET SWITCH

Place the switch in an outlet.

CONNECT DETECTOR

A In the App, select a room, press the + button and choose Zigbee line/Zigbee On-OFF switch and follow the instructions. For manual set up of push-notifications go to the rules tab, press the + button and select notification wizard.twisting it.

OPTIONAL: ALSO CONNECT WITH ZYCT-202 REMOTE CONTROL

To use the switch with the ZYCT-202 and the App follow below steps.

A Make sure the ZCC-3500 is paired with the App. (See chapter 4).

B Connect the ZYCT-202 with the App. (Follow the instructions in the App to pair the ZYCT-202).

C Connect the ZYCT-202 with the ZCC-3500 by selecting a channel and holding the ZYCT-202 against (or as close as possible to) the switch.

D Then press and hold the ZYCT-202 ON button until the switch switches ON-OFF-ON-OFF-ON (clicks 5x).



To operate the ZCC-3500 only with the ZYCT-202, follow steps **C** and **D** from chapter 5. **Note:** Make sure the switch is not in connection mode (LED flashes slowly). Stop the connection mode by briefly pressing the button on the housing. The LED on the switch stops flashing. After this follow steps **C** and **D** from chapter 5.

MANUAL ON-OFF SWITCHING

With the ZCC-3500 you can also manually switch your lighting / device ON or OFF by pressing the button on the housing.



ACTIVATE CONNECTION MODE FOR ZIGBEE CONTROL STATION (LIKE ICS-2000/SMART BRIDGE / Z1) If the switch is not connected to a control station, you can activate the connection mode by shortly pressing the button on the housing of the switch. The LED flashes slowly to indicate that it is in connection mode.



RESET SWITCH



Warning: With this step, the switch is removed from the control station and/or the ZYCT-202. To reset the switch, press the button for 6 seconds. The LED will flash quickly. Press the button again briefly. The socket switches ON and OFF 2x to confirm it is reset and then activates the connection mode.

The wireless range increases if you add more zigbee products (meshing). Go to trust.com/zigbee for more information about meshing.

Safety Instructions

Product support: www.trust.com/71255. Warranty conditions: www.trust.com/warranty

To ensure safe handling of the device, follow the safety advice on: www.trust.com/safety

The Wireless range is strongly dependent on local conditions such as the presence of HR glass and reinforced concrete. Never use Trust Smart Home products for life-support systems. This product is not water-resistant. Do not attempt to repair this product. Wire colors may vary per country. Contact an electrician when in doubt about wiring. Never connect lights or equipment that exceed the maximum load of the receiver. Exercise caution when installing a receiver voltage may be present, even when a receiver is switched off. Maximum radio transmit power: 1.76 dBm. Radio transmission frequency range: 2400-2483.5 MHz



Disposal of packaging materials – Dispose of packaging materials which are no longer needed in accordance with applicable local regulations. The packaging materials have been selected for their environmental friendliness and ease of disposal and are therefore recyclable



Disposal of the device – The adjacent symbol of a crossed-out wheellie bin means that this device is subject to Directive 2012/19/EU. This directive states that this device may not be disposed of in normal household waste at the end of its usable life, but must be handed over to specially set-up collection locations, recycling depots or disposal companies. This disposal is free of charge for the user.



Disposal of batteries – Used batteries may not be disposed of in household waste. Only dispose of batteries when they are fully discharged. Dispose of batteries according to local regulations. Cover the poles of partially discharged batteries with tape to prevent short circuits.



Trust Electronics Ltd. declares that item number 71255/71255-02 is in compliance with Directive Electromagnetic Compatibility Regulations 2016, Radio Equipment Regulations 2017. The full text of the declaration of conformity is available at the following internet address: www.trust.com/compliance



Trust International B.V. declares that item number 71255/71255-02 is in compliance with Directive 2014/53/EU –2011/65/EU. The full text of the EU declaration of conformity is available at the following web address: www.trust.com/compliance



Declaration of Conformity

Trust International B.V. declares that this Trust Smart Home-product:

Model:	ZCC-3500 WIRELESS SOCKET SWITCH
Item number:	71255/71255-02
Intended use:	Indoor

is in compliance with the essential requirements and other relevant provisions of the following directives:

ROHS 2 Directive (2011/65/EU)

RED Directive (2014/53/EU)

The full text of the EU declaration of conformity is available at the following web address:

www.trust.com/compliance

TRUST SMART HOME

LAAN VAN BARCELONA 600

3317DD DORDRECHT

NEDERLAND

www.trust.com

Trust Electronics Ltd.,

Sopwith Dr, Weybridge, KT13 0NT, UK.


All brand names are registered trademarks of their respective owners. Specifications are subject to change without prior notice. Made in China.

TECHNICAL SPECIFICATIONS

Zigbee	2400-2483.5 MHz; 1.76 dBm
Power	230V AC
Size	HxWxL: 53 x 53 x 58.4 mm
Maximum load	3500 Watt

www.trust.com

Documents / Resources

	<p>Trust ZCC-3500 Socket Switch With Status Display [pdf] User Manual ZCC-3500 Socket Switch With Status Display, ZCC-3500, Socket Switch With Status Display, Switch With Status Display, Status Display</p>
---	---

References

- [Trust.com - Home](#)
- [Trust.com - Contact & Support - Compliance](#)
- [Trust.com - Contact & Support - Installation of ZigBee products](#)
- [Trust.com - Home](#)
- [Trust.com - Home](#)
- [Trust.com - ZCC-3500 Zigbee Socket Switch ML](#)
- [Trust.com - Contact & Support - Compliance](#)
- [Trust.com - Contact & Support - Safety information](#)
- [Trust.com - Contact & Support - Warranty conditions](#)