


Trust GXT 606 Javv Speaker Set



Trust GXT 606 Javv Speaker Set User Guide

[Home](#) » [Support](#) » Trust GXT 606 Javv Speaker Set User Guide 

Contents

- 1 Trust GXT 606 Javv Speaker Set
- 2 Introduction
- 3 Box Contents
- 4 Setup Guide
- 5 Volume Control
 - 5.1 Adjusting Volume
 - 5.2 Volume Knob Indicator
 - 5.3 Mute Functionality
 - 5.4 Tips for Best Volume Control
- 6 Power and Bluetooth Pairing
 - 6.1 Powering On the Speakers
 - 6.2 Bluetooth Pairing (If Supported)
- 7 Troubleshooting
- 8 Frequently Asked Questions
- 9 References
- 10 Related Posts



Trust GXT 606 Javv Speaker Set



USER GUIDE

SPEAKER SET

Introduction

Welcome to the superior sound experience with your new Trust GXT 606 Javv Speaker Set. This set is designed to offer a harmonious blend of style and acoustic performance, perfect for enhancing your gaming setup, workspace, or home entertainment system.

These compact speakers deliver clear audio with a solid bass, providing an immersive sound experience whether you're gaming, watching movies, or enjoying your favorite music. The sleek design features a modern aesthetic that complements any desk setup, while the easy-to-use controls ensure a seamless audio experience.

Box Contents

- 2 x Trust GXT 606 Javv Speakers
- 1 x USB-A Cable for Power
- 1 x 3.5mm AUX Cable for Audio
- User Manual

Setup Guide

Setting up your Trust GXT 606 Javv Speaker Set is straightforward. Follow these steps to quickly start enjoying your audio experience.

- **Step 1: Unpack and Place Your Speakers**

- Take the speakers out of the box and place them on your desk or preferred location near your audio

output device (e.g., computer, smartphone, or tablet). Ensure that the speakers are placed on a stable surface to prevent vibrations.

- **Step 2: Connect the Speakers to the Power**

- Locate the USB-A cable from the back of the primary speaker. Plug this cable into a USB port on your computer or a USB power adapter plugged into an electrical outlet. This will provide power to your speakers.

- **Step 3: Connect the Speakers to Your Audio Source**

- Find the 3.5mm AUX cable attached to the primary speaker. Insert the AUX plug into the headphones or speaker out jack on your audio source device.

- **Step 4: Power On Your Speakers**

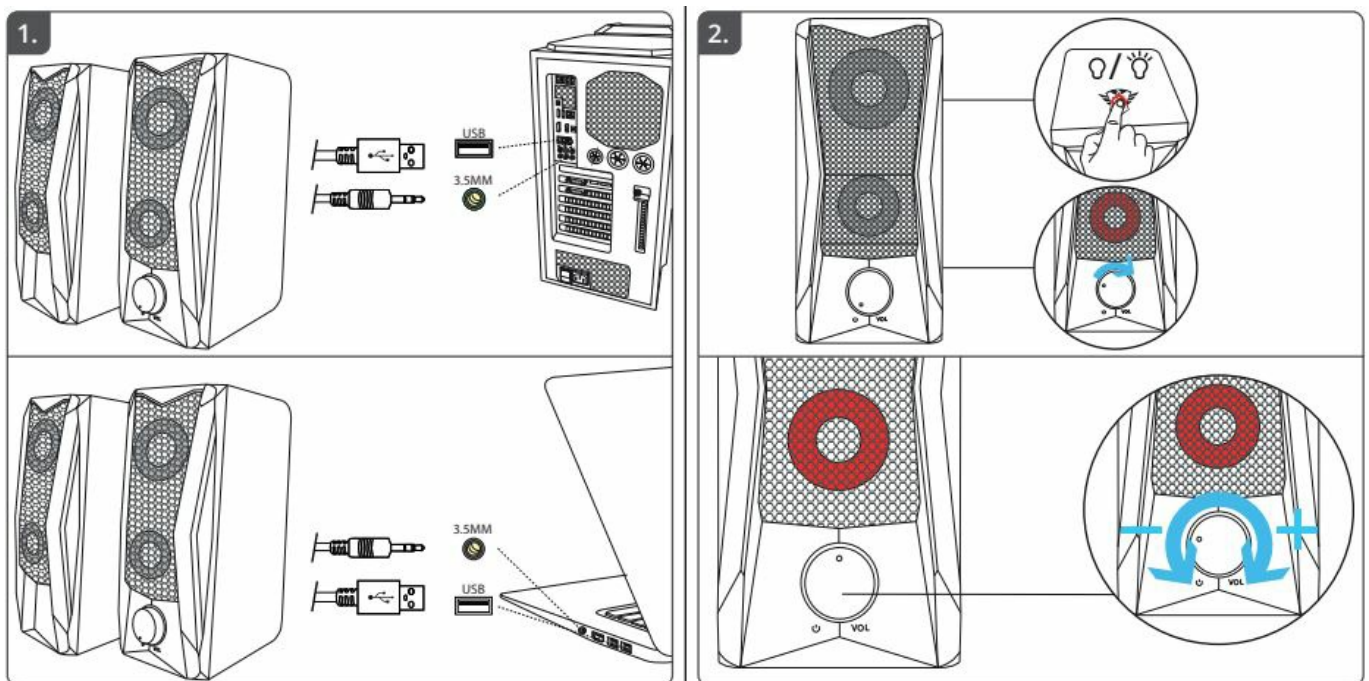
- Press the button located on the top of the primary speaker, as indicated by the red star on the image. You should see an LED indicator light up, signifying that the speakers are now powered on.

- **Step 5: Adjust the Volume**

- Turn the volume knob on the front of the primary speaker clockwise to increase volume or counterclockwise to decrease it, as shown by the red arrow in the image.

- **Step 6: Test the Sound**

- Play audio from your connected device to test the speakers. You should hear sound coming from both speakers. Adjust the volume to your liking.



Tips for Best Performance:

- For optimal audio quality, adjust your device's volume to be high and fine-tune the speaker volume with the knob.
- Position the speakers to face towards your usual listening position for the best stereo sound experience.
- Avoid placing objects in front of the speakers to prevent blocking the sound.

Congratulations, your Trust GXT 606 Javv Speaker Set is now ready to use! Enjoy an immersive audio experience with your games, movies, and music.

Volume Control

Managing the volume on your Trust GXT 606 Javv Speaker Set is simple and intuitive. Follow these instructions to control the audio levels for the optimal listening experience.

Adjusting Volume

- **To Increase Volume:** Locate the volume knob on the front of the primary speaker. Gently rotate the knob clockwise to raise the volume. As you turn the knob, the audio output will increase gradually, allowing you to find the perfect volume level for your activity.
- **To Decrease Volume:** If you wish to lower the volume, simply turn the volume knob counterclockwise. The sound will decrease incrementally, helping you to set a more comfortable or ambient sound level.

Volume Knob Indicator

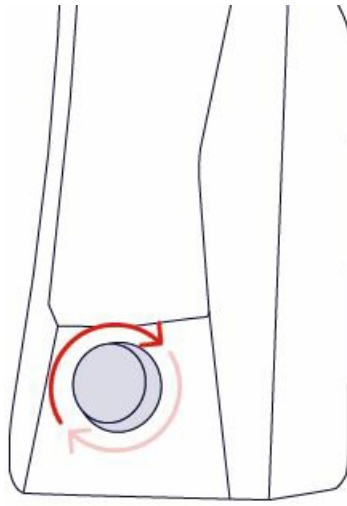
- **Knob Position:** The volume knob is marked with a tactile indicator. When the knob is in the minimum volume position, the indicator should be aligned towards the left or in a downward position. As you increase the volume, the indicator will move towards the right or an upward position.
- **Visual Cue:** Some models of the GXT 606 Javv may also have a visual cue on the volume knob or around it to show the current volume level. This can be a series of LED lights or a marker on the speaker grill.

Mute Functionality

- **To Mute:** If your speaker set has a mute function, you can quickly mute the sound by pressing the volume knob like a button. Pressing it again will unmute the sound.

Tips for Best Volume Control

- **Initial Device Volume:** Set the volume on your computer or audio source device to 75% to ensure a wide range of adjustment from your speaker's volume knob.
- **Balanced Setting:** For balanced sound, it's recommended to find a volume setting that is neither too high nor too low, to avoid distortion or inadequate sound projection.
- **Avoiding Distortion:** Keep the volume at a level where sound remains clear and free of distortion. If distortion occurs, lower the volume slightly until the sound is clear again.

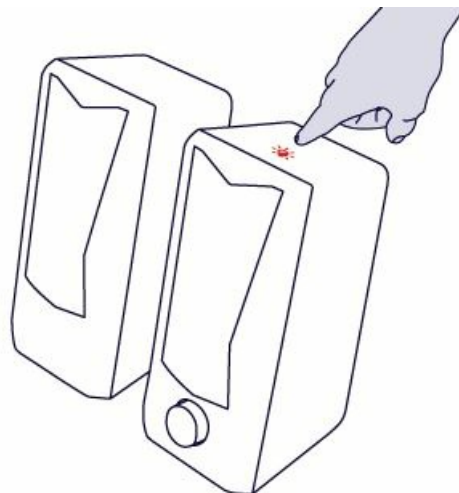


Power and Bluetooth Pairing

Powering on your Trust GXT 606 Javv Speaker Set and pairing it with Bluetooth devices (if applicable) is a straightforward process. This section will guide you through both operations.

Powering On the Speakers

- **Power On:** After connecting the speakers to a power source using the USB-A cable, press the power button situated on the top of the primary speaker, as shown in your provided image. This is typically marked with a power icon or may simply be the largest button on the speaker.
- **LED Indicator:** Upon pressing the power button, an LED indicator should illuminate, signaling that the speakers are active. The LED color or pattern can indicate the current status—power on, standby, or Bluetooth mode.



Bluetooth Pairing (If Supported)

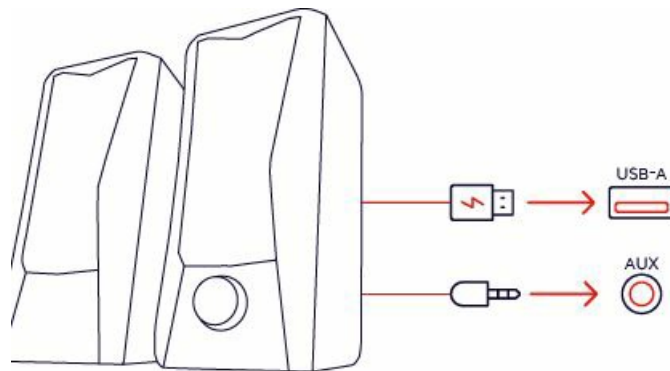
If your GXT 606 Javv Speaker Set supports Bluetooth connectivity, follow these additional steps:

- **Activation:** Press and hold the power button for a few seconds until you see the LED indicator flashing in a distinct pattern, usually a blue light, which indicates that the speaker is in Bluetooth pairing mode.
- **Device Search:** On your Bluetooth-enabled device (smartphone, tablet, laptop, etc.), open the Bluetooth settings and search for new devices.

- **Select Speakers:** Look for the 'Trust GXT 606' or a similar name in the list of available devices and select it to initiate pairing.
- **Confirmation:** Once connected, the LED indicator will often change to a steady light, and you may hear an audible confirmation tone from the speakers.
- **Multiple Devices:** If your speakers can pair with multiple devices, follow the same steps to add another device. The speaker will generally remember paired devices and automatically reconnect to them when in range.

Tips for Successful Bluetooth Pairing

- **Proximity:** Ensure your Bluetooth device is within 5 meters (16 feet) of the speakers for a strong connection.
- **Interference:** Keep other wireless devices or objects that could cause interference away from the speakers and Bluetooth source.
- **Bluetooth Version Compatibility:** Confirm that your Bluetooth source is compatible with the speakers' Bluetooth version for a stable connection.



Troubleshooting

Occasionally, you might encounter issues with your Trust GXT 606 Javv Speaker Set. Below are common problems and their possible solutions. If these steps do not resolve your issue, please contact Trust Customer Support for further assistance.

No Power or LED Indicator

- **Check Connections:** Ensure the USB cable is firmly connected to the speaker and to the power source (computer USB port or USB power adapter).
- **Power Source:** Try a different USB port or a separate USB power adapter to rule out a faulty power source.
- **Cable Integrity:** Inspect the USB cable for any damage. If damaged, replace it with a new one.

No Sound

- **Volume Check:** Ensure the volume is turned up on both the speaker set and your audio source device.
- **Proper Input:** Check that the AUX cable is securely connected to both the speaker and the audio source.
- **Default Device:** On your computer, verify that the Trust GXT 606 Javv is selected as the default playback device.
- **Audio Source:** Try a different audio source or track to ensure the problem is not with the original source.

Sound Distortion or Interference

- **Volume Level:** Lower the volume on your speakers and the audio source to see if the distortion clears.
- **Cable Check:** Ensure that the AUX cable is not tangled or close to any potential sources of interference, such as power cables or electronic devices.
- **Quality of Audio File:** Poor quality or corrupted audio files can cause distortion. Try playing a high-quality audio track for comparison.

Bluetooth Pairing Issues

- **Pairing Mode:** Make sure the speaker is in pairing mode, indicated by a flashing LED.
- **Forget Device:** On your Bluetooth device, select to “forget” the Trust GXT 606 Javv and then attempt to re-pair.
- **Restart Devices:** Sometimes simply restarting both the speaker and the Bluetooth device can resolve pairing issues.

LED Indicator Behavior

- **Flashing LED:** If the LED is flashing in a pattern not recognized, refer to the manual section on LED indicator meanings or reset the speaker.
- **LED Not Illuminating:** If the LED does not illuminate when expected, ensure the speaker is powered on and the LED is functional.

General Tips

- **Firmware Update:** If applicable, ensure your speaker firmware is up to date for optimal performance.
- **Reset Speakers:** Some models may have a reset button or sequence. Refer to the product manual for the exact method to reset your speakers.

WWW.TRUST.COM/23379/FAQ

Trust International BV – Laan van Barcelona 600 – 3317DD, Dordrecht, The Netherlands ©2023 Trust All rights reserved.

Frequently Asked Questions

How do I power on the Trust GXT 606 Javv Speaker Set?

To power on the Trust GXT 606 Javv Speaker Set, simply press the power button located on the top of the primary speaker. This button is typically marked with a power icon or is the largest button on the speaker. An LED indicator should illuminate, indicating that the speakers are active.

How do I adjust the volume on the Trust GXT 606 Javv Speaker Set?

You can adjust the volume on the Trust GXT 606 Javv Speaker Set using the volume knob located on the

front of the primary speaker. Rotate the knob clockwise to increase the volume and counterclockwise to decrease it.

Can I mute the Trust GXT 606 Javv Speaker Set?

Yes, if your speaker set has a mute function, you can quickly mute the sound by pressing the volume knob on the primary speaker like a button. Pressing it again will unmute the sound.

How do I connect the Trust GXT 606 Javv Speaker Set to my audio source device?

To connect the speakers to your audio source device, use the provided 3.5mm AUX cable. Insert the AUX plug into the headphones or speaker out jack on your audio source device.

How can I check the LED indicator behavior on the Trust GXT 606 Javv Speaker Set?

The LED indicator on the speaker provides visual cues for different statuses. Refer to the user manual for specific meanings of LED patterns and colors.

Are firmware updates available for the Trust GXT 606 Javv Speaker Set?

Check the manufacturer's website or support page for any available firmware updates to ensure optimal performance.

How do I clean my Trust GXT 606 Javv Speaker Set?

To clean your Trust GXT 606 Javv Speaker Set, use a soft, lint-free cloth to wipe the exterior surfaces. Avoid using solvents or flammable materials. You can also use cleaning sheets designed for audio equipment to clean the speakers' surfaces.

Can I use the Trust GXT 606 Javv Speaker Set with my gaming console?

Yes, you can use the Trust GXT 606 Javv Speaker Set with gaming consoles that have a 3.5mm audio output jack. Simply connect the speakers to the console using the provided AUX cable.

How can I improve the bass performance of my Trust GXT 606 Javv Speaker Set?

To enhance the bass performance, you can adjust the bass settings on your audio source device (if available) or use equalizer settings to boost the low frequencies. Additionally, placing the speakers on a solid surface can help with bass resonance.

Are replacement cables available for the Trust GXT 606 Javv Speaker Set?

You can find replacement USB-A and 3.5mm AUX cables at electronics stores or online retailers. Ensure that the replacement cables have the appropriate connectors for your speaker set.

Can I connect the Trust GXT 606 Javv Speaker Set to a TV or home theater system?

If your TV or home theater system has a 3.5mm audio output jack, you can connect the speakers using the provided AUX cable. However, for more complex setups, you may require additional adapters or connectors.

Do I need to install any drivers for the Trust GXT 606 Javv Speaker Set to work with my computer?

No, the Trust GXT 606 Javv Speaker Set is typically plug-and-play and does not require additional driver installation for basic audio playback. Your computer should recognize the speakers when connected via the AUX cable.

Download The PDF link: [Trust GXT 606 Javv Speaker Set User Manual](#)

References

- [User Manual](#)