



Trust 23749 Nado Bluetooth Wireless keyboard User Manual

[Home](#) » [Trust](#) » Trust 23749 Nado Bluetooth Wireless keyboard User Manual 

Contents

- [1 Trust 23749 Nado Bluetooth Wireless keyboard](#)
- [2 SPECIFICATIONS](#)
- [3 WHAT'S IN THE BOX](#)
- [4 INSERT 2X AAA BATTERIES AND POWER ON/OFF](#)
- [5 CONNECTION](#)
- [6 FUNCTION KEYS](#)
- [7 INSTALLATION](#)
- [8 SYSTEM REQUIREMENTS](#)
- [9 FREQUENTLY ASKED QUESTIONS](#)

Trust.

Trust 23749 Nado Bluetooth Wireless keyboard



SPECIFICATIONS

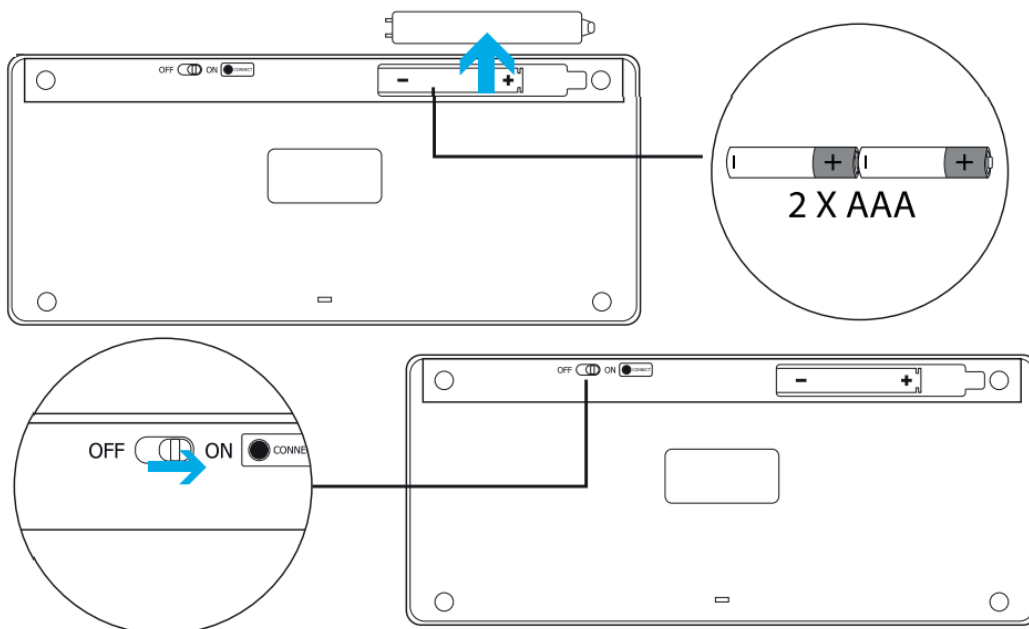
- **Brand:** Trust
- **Compatible devices:** PC
- **Connectivity technology:** Bluetooth
- **Keyboard Description:** Wireless
- **Number of keys:** 85
- **Style:** Modern
- **Item dimensions:** L x W x H 12.1 x 28.6 x 2.2 centimeters
- **Hand orientation:** Ambidextrous
- **Number of buttons:** 85
- **Product Dimensions:** 12.1 x 28.6 x 2.2 cm; 293 Grams
- **Item model number:** 23749

WHAT'S IN THE BOX

- Keyboard
- User Manual
- 2x AAA batteries

INSERT 2X AAA BATTERIES AND POWER ON/OFF

The on/off switch for the Trust 23749 Nado Bluetooth Wireless Keyboard is often found on the keyboard's base or one of its sides. The keyboard's power switch can be slid to activate or deactivate the device.



- **Power up your gadget:**
Make sure the Bluetooth functionality is enabled and the device you intend to connect the keyboard to is turned on (e.g., computer, laptop, tablet, smartphone).
- **Put Bluetooth to use:**
Make sure Bluetooth is enabled in your device's settings. If you don't know how to turn on Bluetooth on your device, look in the handbook or the settings menu.
- **Pair the keyboard by doing the following:**

The on/off switch may be found in the top right corner of the Trust 23749 Nado Bluetooth Wireless Keyboard. Switch to the “on” position by sliding the switch. You should now be able to pair the keyboard.

- **Get the process of matching started:**

Find other Bluetooth devices nearby or initiate pairing on your device. The specifics of how to accomplish this are OS-specific. Bluetooth configuration options are often located in the device’s settings menu or the system tray/notification area.

- **To pair a keyboard, just pick it:**

Find the Trust 23749 Nado Bluetooth Wireless Keyboard or a device with a similar identification in the list of available devices. To begin the matching procedure, click it.

- **Put the pieces together:**

To finish the pairing process, just follow your device’s on-screen instructions. The device and keyboard may prompt you to input a pairing code or confirm a passkey.

- **Successful linkup:**

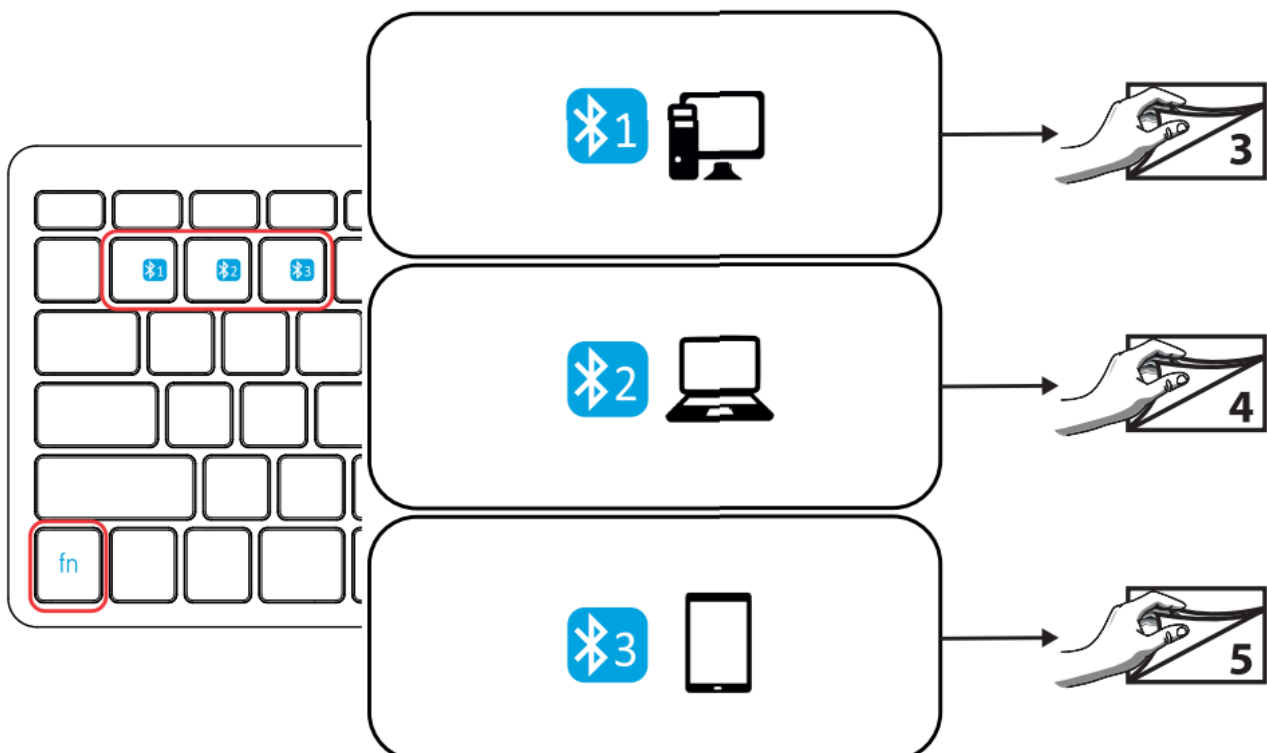
After the Trust 23749 Nado Bluetooth Wireless Keyboard has been paired successfully, your device should show that it is connected to the keyboard. You should now be able to type text and execute commands on your device.

CONNECTION

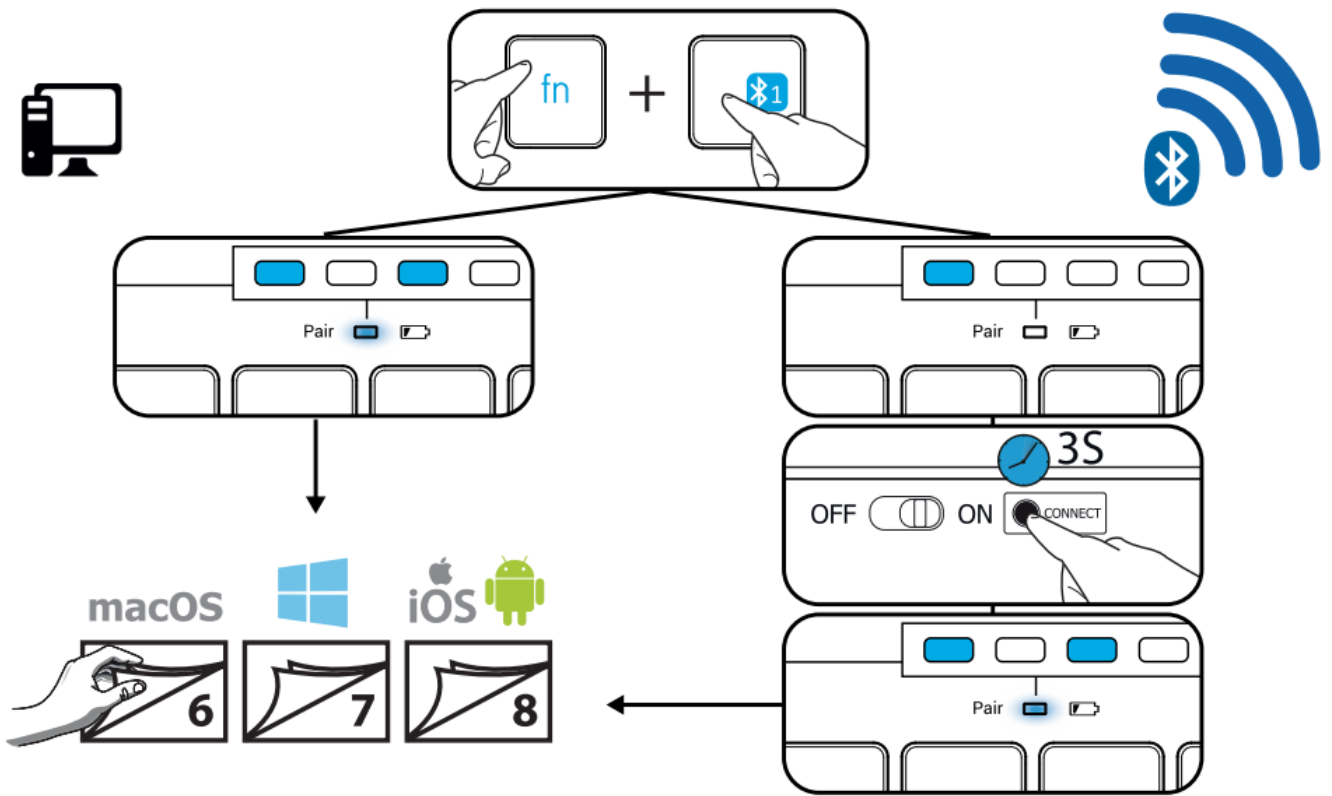
The keyboard uses Bluetooth to connect to your electronic devices, so you may use it with your PC, laptop, tablet, or smartphone.

BLUETOOTH SUPPORT

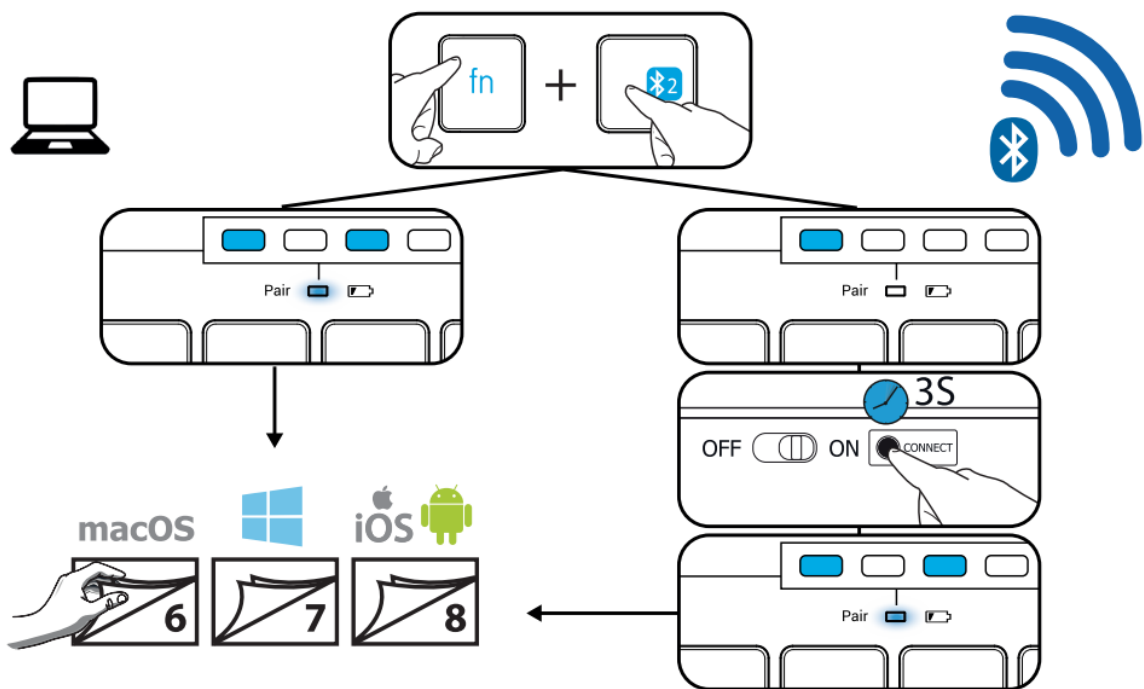
You’ll need to turn on Bluetooth on your gadget and set the keyboard into pairing mode before you can use it. This is typically accomplished by pressing a predetermined key combination or a button specifically designed for this purpose on the keyboard.



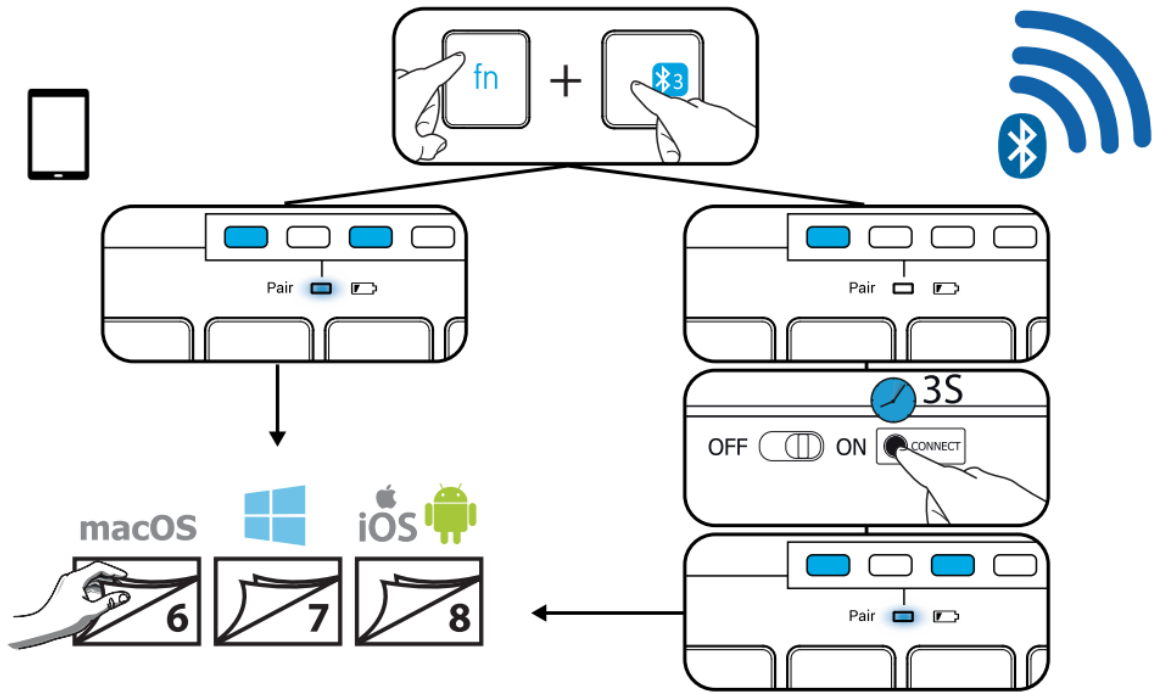
WI-FI OR BLUETOOTH CONNECTION WITH LED



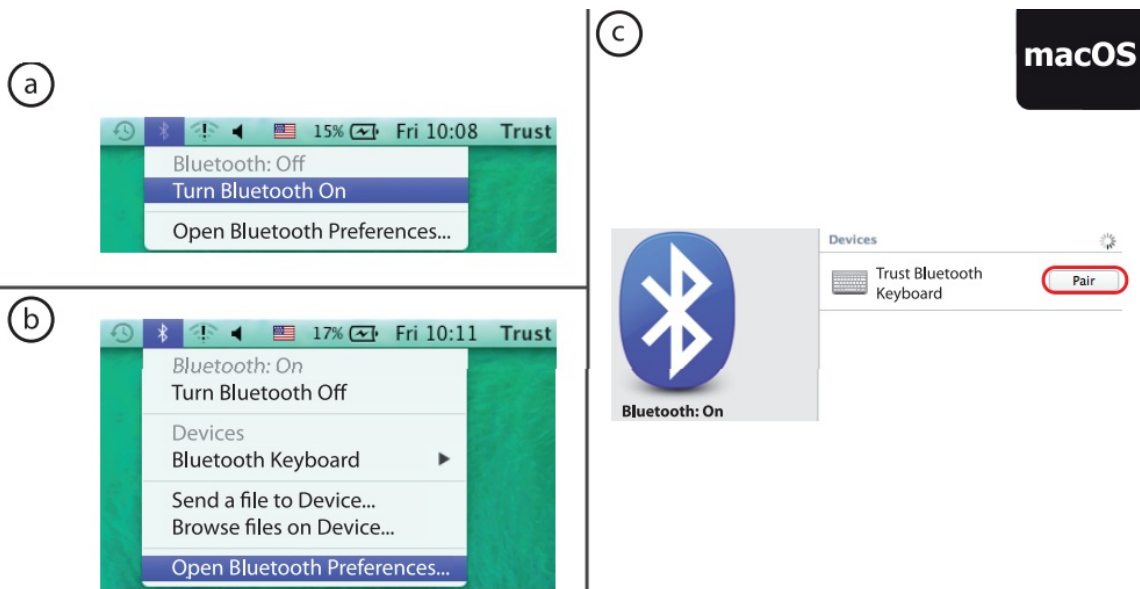
WI-FI OR BLUETOOTH CONNECTION WITH PC



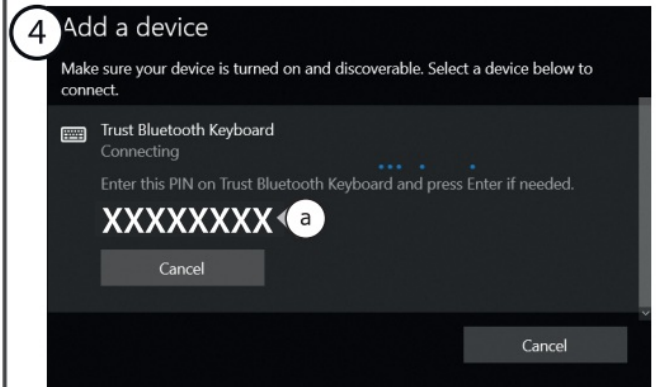
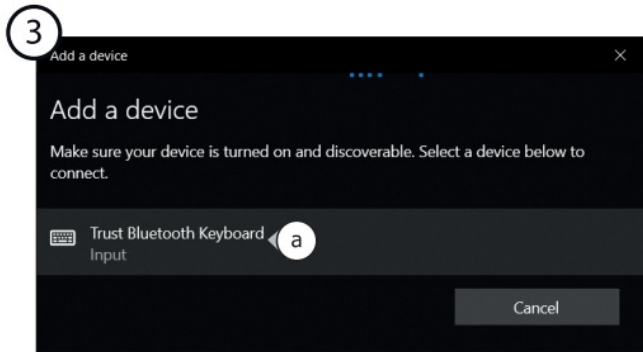
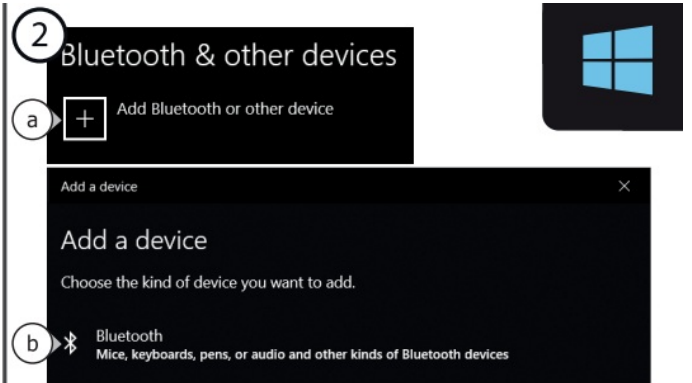
WI-FI OR BLUETOOTH CONNECTION WITH MOBILE



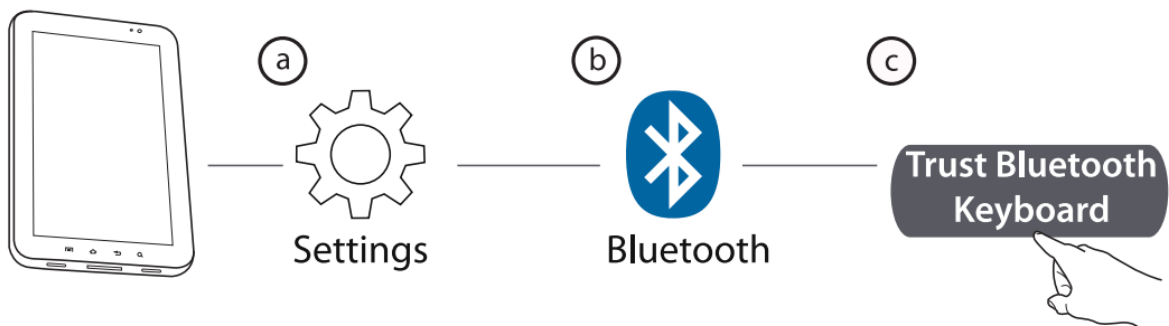
CONNECT WITH MACOS



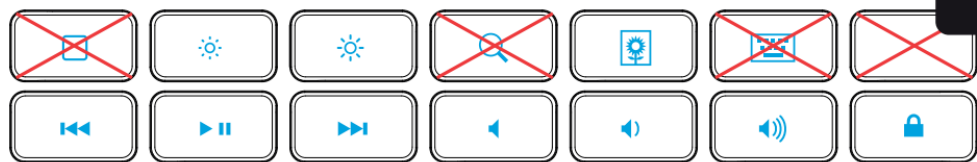
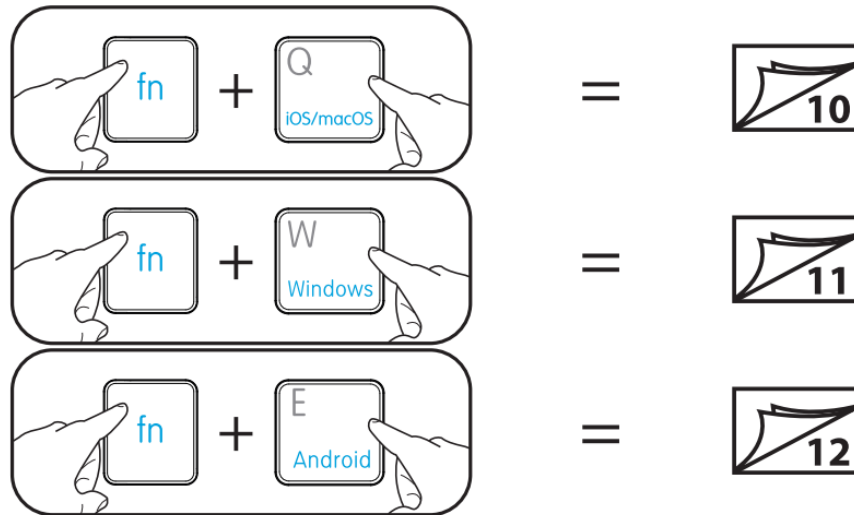
CONNECT WITH OTHER DEVICES



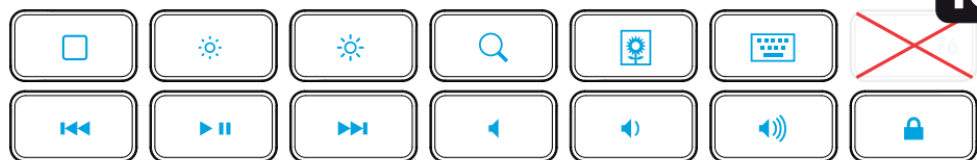
CONNECT WITH IOS



FUNCTION KEYS



macOS



iOS



INSTALLATION

- Turn the keyboard on to use it.
- Connect by holding the button down for three seconds.
- The blue keyboard light will begin flashing. The pairing mode has been enabled.
- To find nearby Bluetooth devices, open your device's settings.

- Select Pair when the Trust Bluetooth Keyboard is located.
- A Passcode will be displayed on your smartphone.
- Press the Enter key on your keyboard after entering this code.
- Hold off till the link is made. The connection is established when the keyboard's indicator light turns off.
- The keyboard is set up and ready to go!

SYSTEM REQUIREMENTS

- A Bluetooth-enabled computer, laptop, tablet, or smartphone
- Windows 7, 8, or 10
- Macs running Mac OS X 10.15 (El Capitan) or later are required.
- Android 4.0.3 or later.
- iOS 9.2 or laterUses the TCPDF engine

FREQUENTLY ASKED QUESTIONS

What is the Trust 23749 Nado Bluetooth Wireless Keyboard?

The Trust 23749 Nado Bluetooth Wireless Keyboard is a wireless keyboard that connects to devices via Bluetooth for convenient typing.

Which devices are compatible with the Trust 23749 Nado Bluetooth Wireless Keyboard?

It is compatible with various devices, including computers, laptops, tablets, and smartphones running Windows, macOS, iOS, or Android.

How does the Trust 23749 Nado Bluetooth Wireless Keyboard connect to devices?

It connects to devices using Bluetooth technology, eliminating the need for a physical cable.

Does the Trust 23749 Nado Bluetooth Wireless Keyboard have a rechargeable battery?

Yes, it typically has an internal rechargeable battery that can be charged using a USB cable.

What is the battery life of the Trust 23749 Nado Bluetooth Wireless Keyboard?

The battery life may vary, but it is designed to provide extended usage between charges.

Does the Trust 23749 Nado Bluetooth Wireless Keyboard have multimedia keys?

Yes, it often includes dedicated multimedia keys for controlling media playback and volume.

Are the keys on the Trust 23749 Nado Bluetooth Wireless Keyboard low-profile?

Yes, it typically has low-profile keys for comfortable and quiet typing.

Does the Trust 23749 Nado Bluetooth Wireless Keyboard have an auto-sleep feature?

Yes, it may have an auto-sleep function to conserve battery life after a period of inactivity.

Can the Trust 23749 Nado Bluetooth Wireless Keyboard wake up automatically?

Yes, it can automatically wake up when you start typing again.

How far is the Bluetooth range of the Trust 23749 Nado Bluetooth Wireless Keyboard?

The Bluetooth range may vary, but it generally provides a working distance of up to 10 meters (approximately 33 feet).

Can the Trust 23749 Nado Bluetooth Wireless Keyboard be used with multiple devices?

Yes, it can typically be paired with and used with multiple devices.

Does the Trust 23749 Nado Bluetooth Wireless Keyboard have an ergonomic design?

It may offer an ergonomic design to provide comfortable typing over extended periods.

Is the Trust 23749 Nado Bluetooth Wireless Keyboard compatible with gaming consoles?

While it's primarily designed for computers and mobile devices, it may work with select gaming consoles that support Bluetooth keyboards.

Does the Trust 23749 Nado Bluetooth Wireless Keyboard come with a user manual?

Yes, it should come with a user manual providing instructions and information about its features.

DOWNLOAD THE PDF LINK: [Trust 23749 Nado Bluetooth Wireless Keyboard User Manual](#)