

**Trust.**

**Trust MACC-200  
Matter and  
Start Line  
Smart Socket  
Dimmer**



# Trust MACC-200 Matter and Start Line Smart Socket Dimmer User Manual

[Home](#) » [Trust](#) » Trust MACC-200 Matter and Start Line Smart Socket Dimmer User Manual 

## Contents

- 1 Trust MACC-200 Matter and Start Line Smart Socket Dimmer
- 2 Product Information
- 3 INSTALL THE SOCKET DIMMER
- 4 CONNECT TO MATTER APP
- 5 PAIRING WITH START-LINE TRANSMITTER
- 6 WIRELESS CONTROL OF RF433 START-LINE
- 7 ACTIVATE DIMMING SEQUENCE
- 8 DIMMING MODE
- 9 ADJUSTING THE DIMMING RANGE
- 10 OPTIONAL: RESET MATTER
- 11 FAQ
- 12 Documents / Resources
  - 12.1 References

**Trust.**

Trust MACC-200 Matter and Start Line Smart Socket Dimmer



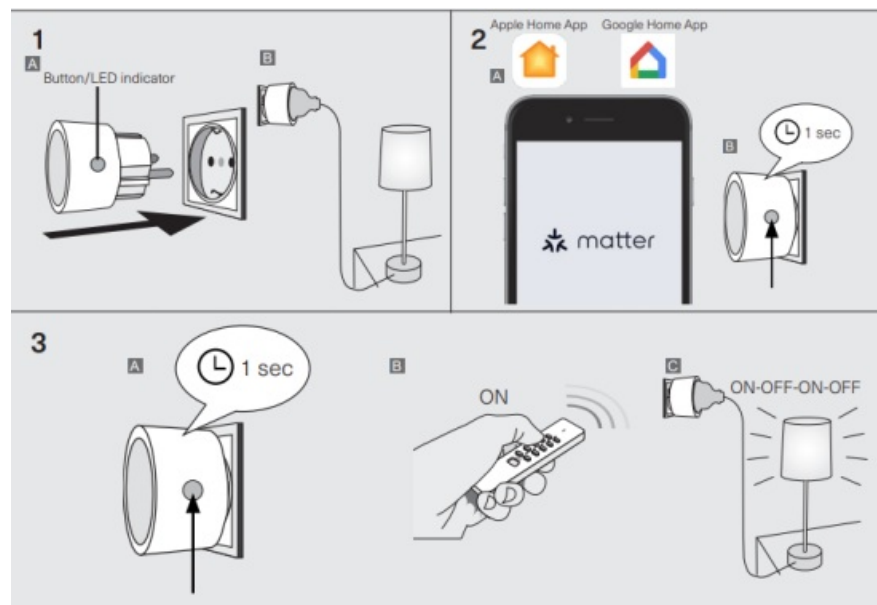
## Product Information

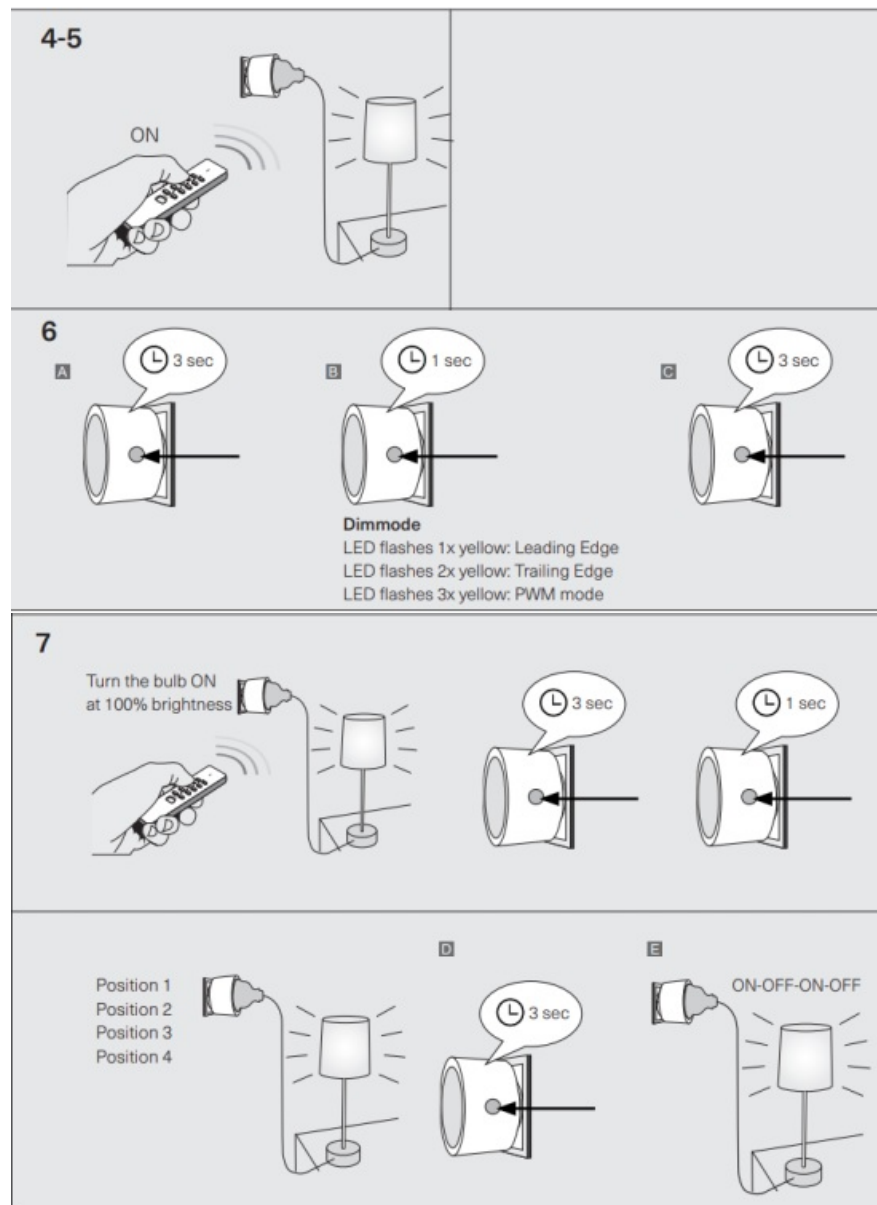
### Specifications

- Product Name: MACC-200 SWITCH-IN
- Model: MATTER & START-LINE SMART SOCKET DIMMER MACC-200
- Item Number: 71360
- Version: 1.0

## INSTALL THE SOCKET DIMMER

- A Place the socket dimmer in an outlet.
- B Connect your lighting to the socket dimmer.
- To connect the socket dimmer with a Matter App, proceed to step 2.
- To connect the socket dimmer with a Trust Switch-In Start-Line transmitter, proceed to step 3.





## CONNECT TO MATTER APP

Make sure the phone or tablet is connected to a 2.4 Ghz WiFi network and not to a 5 Ghz WiFi network.

- A Open the Matter App (e.g. Apple Home or Google Home App) on your phone or tablet.
- B Short press the button on the dimmer to start Matter pairing mode. The LED indicator on the dimmer will flash green. (Matter pairing mode lasts for 5 min, connect the dimmer to a Matter App within these 5 min)
- C Follow the instructions in the App to connect a new Matter device. Note: When connecting the dimmer to the Google Home App, make sure you add the word “dimmer” or “lamp” to the name you enter when asked for the device name. If the dimmer fails to connect, reset it according to the step “Reset Matter dimmer”

## PAIRING WITH START-LINE TRANSMITTER

- A Press the button on the dimmer shortly to start the Start-Line pairing mode. The LED indicator on the dimmer will flash green. (Start-Line pairing mode lasts for 12 sec.)
- B During the pairing mode (within 12 seconds), send an ON signal using a Trust Switch-In transmitter.
- C The lighting will go ON-OFF-ON-OFF to confirm that pairing has been successful.
- The dimmer can store up to 32 different transmitters in its memory. The paired transmitters are retained if the

dimmer is moved to another socket.

## **WIRELESS CONTROL OF RF433 START-LINE**

- Use the paired Start-Line transmitter to send an ON signal to wirelessly turn on the light.
- Use the paired Start-Line transmitter to send an OFF signal to wirelessly turn off the light.

## **ACTIVATE DIMMING SEQUENCE**

- Press the ON button of a paired transmitter to switch on the dimmer.
- Press ON again to activate the dimming sequence
- Press ON a third time to lock the desired dimming level

The dimming sequence automatically stops and locks the dimming level at the highest or lowest point when no signal is given with a transmitter.

## **DIMMING MODE**

If your lighting vibrates, you can choose a different dimming mode.  
Turn off the dimmer with the Matter App or Start-Line transmitter.

- A Press the button on the dimmer for 3 sec until the LED flashes yellow and then release.
- B For leading edge mode, the LED flashes yellow once: This mode is most suitable for dimmable incandescent, halogen, lamps with a traditional (wound) dimmable transformer and specific LED lamps
- Press the button briefly once again to go to the next dimming mode
- For trailing edge mode, the LED flashes yellow twice: This mode is most suitable for LED lamps and lamps with an electronic dimmable transformer
- Press the button briefly once again to go to the next dimming mode
- For PWM (Pulse-width modulation) mode, the LED flashes yellow three times: This mode is often most suitable for dimming Filament LED lamps
- C Press the button on the dimmer for 3 seconds to confirm the selection. The dimmer is set to trailing edge by default.

## **ADJUSTING THE DIMMING RANGE**

If the connected LED lighting does not dim deep enough or vibrates, you can adjust the lower limit of the dimming range.

- A Turn on the lamp and set it to 100% brightness.
- B Hold the button on the dimmer for 3 seconds. The lamp will go to the lowest brightness. Then release the button.
- C Shortly press the button on the dimmer to lower the minimum brightness.
- The minimum brightness starts at position 1. Every time the button on the dimmer is pressed shortly, the lamp will dim 1 position deeper (1-2-3-4). If you press the button shortly again after position 4, the minimum dimming position will return to position 1.
- D Hold the button on the dimmer down for 3 seconds again when the correct dimming range has been selected.

- E The lamp will go ON-OFF-ON-OFF to confirm the selected dimming position.

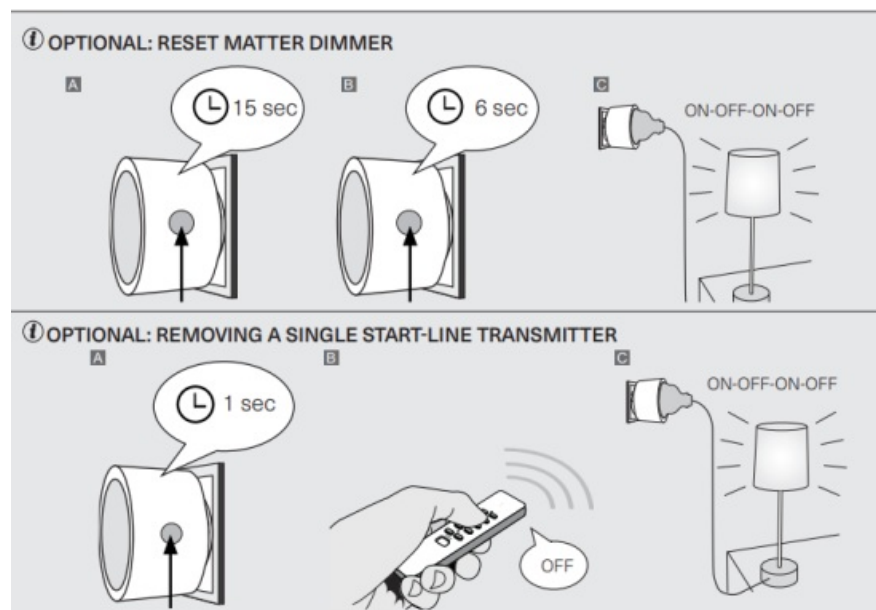
## OPTIONAL: RESET MATTER

**Warning:** After performing this step, you will no longer be able to control the dimmer via Matter, and you will need to remove the dimmer from the Matter App. (The paired Start-Line transmitters will not be removed).

- A To reset Matter, press and hold the button on the dimmer for 15 seconds until the LED blinks red.
- B When the LED blinks red, press and hold the button again for 6 seconds.
- C The connected lamp will turn ON-OFF-ON-OFF to confirm the reset.

## OPTIONAL: REMOVE A SINGLE START-LINE TRANSMITTER

- A Shortly press the button on the dimmer to activate the pairing mode. The pairing mode will be active for 12 seconds, and the LED indicator on the dimmer will blink green.
- B While the pairing mode is active (within 12 seconds), send an OFF signal with the connected Trust Switch-In transmitter. (Refer to the transmitter's manual if needed).
- C The connected lamp will turn ON-OFF-ON-OFF to confirm that the transmitter has been removed.



## OPTIONAL: RESET START-LINE MEMORY

**Warning:** This step will remove all paired Start-Line transmitters from the dimmer memory. (Matter will not be reset by this process).

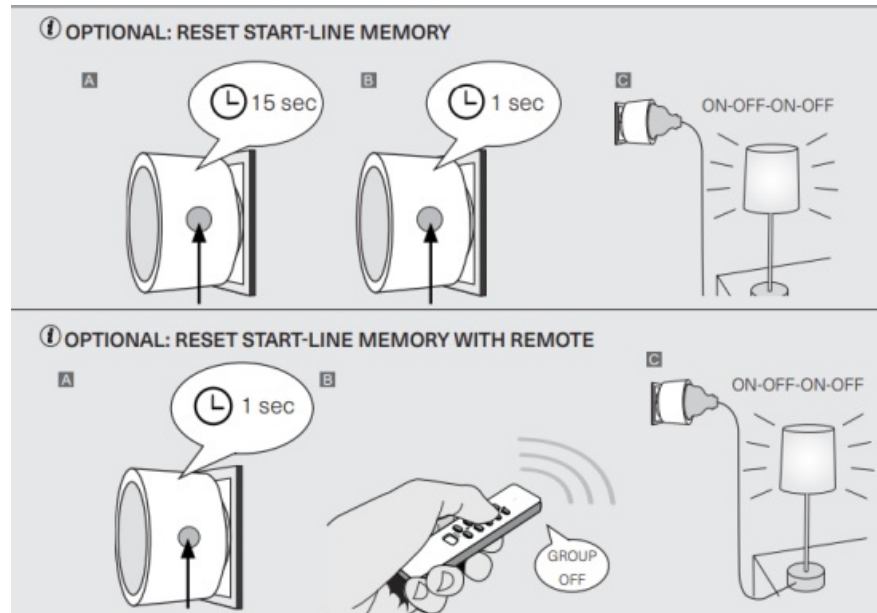
- A To reset the Start-Line memory, press and hold the button on the dimmer for 15 seconds until the LED blinks red.
- B When the LED blinks red, press the button shortly again.
- C The connected lamp will turn ON-OFF-ON-OFF to confirm the reset.

## OPTIONAL: RESET START-LINE MEMORY WITH REMOTE

**Warning:** This step will remove all paired Start-Line transmitters from the dimmer memory. (Matter will not be

reset by this process).

- A Shortly press the button on the dimmer to activate the pairing mode. The pairing mode will be active for 12 seconds, and the LED indicator on the dimmer will blink green.
- B While the pairing mode is active (within 12 seconds), send a GROUP OFF signal with the connected Trust Switch-In transmitter. (Refer to the transmitter's manual if needed).
- C The connected lamp will turn ON-OFF-ON-OFF to confirm the reset.




## FAQ

**Q: How many transmitters can the dimmer store in its memory?**

**A:** The dimmer can store up to 32 different transmitters in its memory.

## Documents / Resources

	<a href="#">Trust MACC-200 Matter and Start Line Smart Socket Dimmer</a> [pdf] User Manual MACC-200 Matter and Start Line Smart Socket Dimmer, MACC-200, Matter and Start Line Smart Socket Dimmer, Start Line Smart Socket Dimmer, Line Smart Socket Dimmer, Smart Socket Dimmer, Socket Dimmer
---	---

## References

- [User Manual](#)

### [Manuals+](#). [Privacy Policy](#)

This website is an independent publication and is neither affiliated with nor endorsed by any of the trademark owners. The "Bluetooth®" word mark and logos are registered trademarks owned by Bluetooth SIG, Inc. The "Wi-Fi®" word mark and logos are registered trademarks owned by the Wi-Fi Alliance. Any use of these marks on this website does not imply any affiliation with or endorsement.