



Trust AYCT-102 Remote Control User Manual

[Home](#) » [Trust](#) » Trust AYCT-102 Remote Control User Manual 

Contents

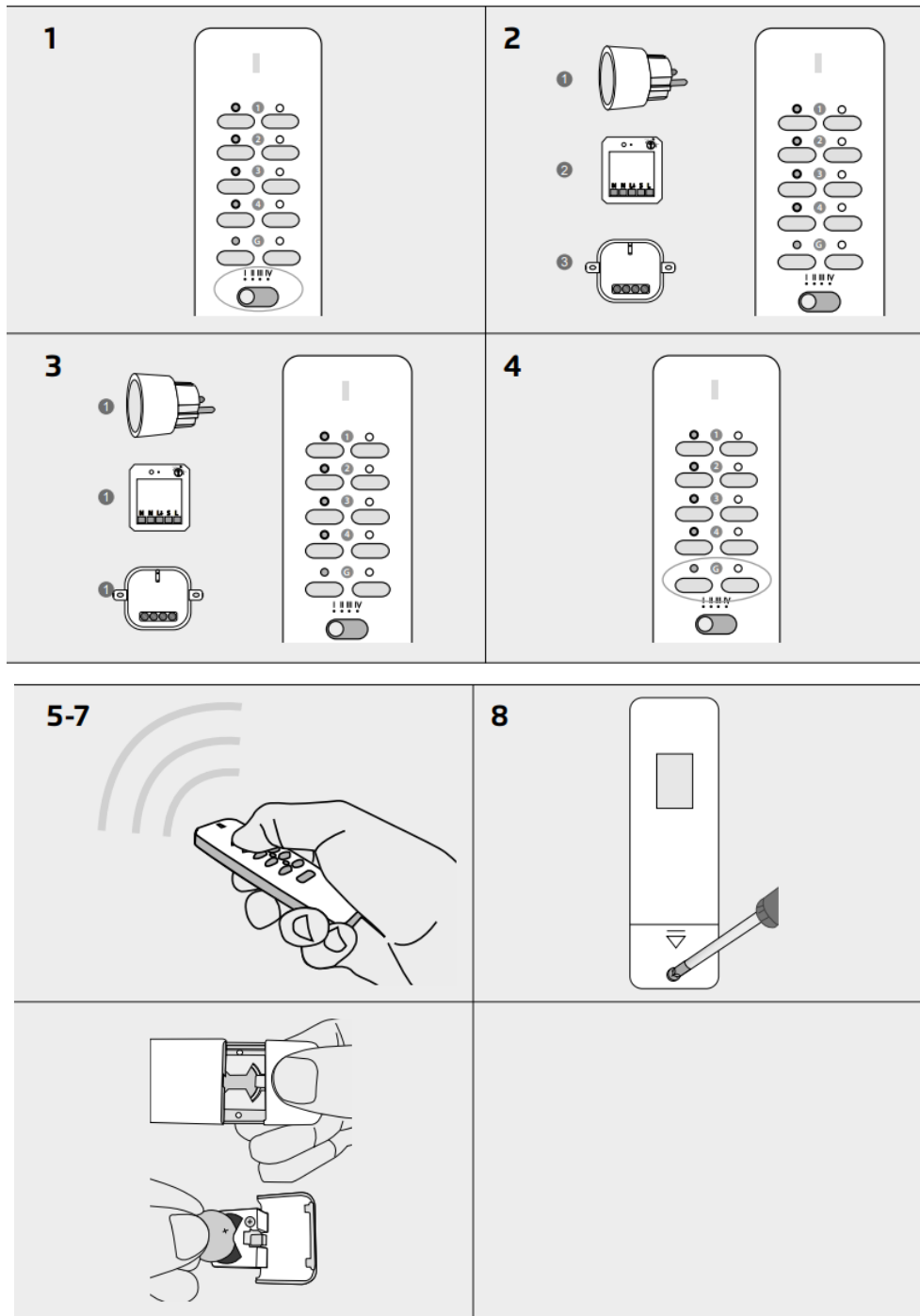
- 1 [Trust AYCT-102 Remote Control](#)
- 2 [REMOTE CONTROL](#)
- 3 [Safety Instructions](#)
- 4 [Declaration of Conformity](#)
- 5 [TECHNICAL SPECIFICATIONS](#)
- 6 [Documents / Resources](#)
 - 6.1 [References](#)
- 7 [Related Posts](#)

Trust.

Trust AYCT-102 Remote Control



REMOTE CONTROL



Channel switch

Slide the channel switch to I, II, III or IV to access 16 different channels (4 x 1 2 3 4).

Control 1 Trust Smart Home receiver per channel

To control receivers individually, assign a separate channel (1 2 3 and 4) to each receiver. Read the receivers manual for the code learning procedure.

Control multiple Trust Smart Home receivers per channel

To control several receivers simultaneously, assign the same channel (for example 1) to those receivers. Read the receivers manual for the code learning procedure.

Group function

Assign the G button to multiple receivers to switch a group of receivers ON/OFF simultaneously (no dimming). Read the receivers manual for the code learning procedure. The G button can always be used, regardless of the channel switch setting (I, II, III or IV).

Manual operation of a Trust Smart Home on/off receiver

- Press ON to switch the receiver on.
- Press OFF to switch the receiver off.

Manual operation and dimming with a Trust Smart Home transmitter

- Press ON once to switch the receiver on.
- Press ON again to activate the dim-mode. The light will slowly dim up and down.
- Press ON a third time to set the desired light intensity. D Press OFF to switch the receiver off.
The receiver will return to the last light level when switched on again.

Manual operation of a Trust Smart Home receiver for electric screens

- Send an ON-signal to raise the screen.
- Send an ON-signal again to stop.
- Send an OFF-signal to lower the screen.
- Send an OFF-signal again to stop.

Read the receivers manual to reverse the direction of the screen, if needed.

Replace transmitter battery

- Open the battery compartment by screwing it open.
- Place a new 3V CR2032 lithium battery. The polarity should match the symbols on the holder.
- Close the battery compartment.

Safety Instructions

Product support: www.trust.com/71001. Warranty conditions: www.trust.com/warranty

To ensure safe handling of the device, follow the safety advice on: www.trust.com/safety

The Wireless range is strongly dependent on local conditions such as the presence of HR glass and reinforced concrete Never use Trust Smart Home products for life-support systems. This product is not water-resistant. Do not attempt to repair this product. Wire colors may vary per country. Contact an electrician when in doubt about wiring. Never connect lights or equipment that exceed the maximum load of the receiver. Exercise caution when installing a receiver voltage may be present, even when a receiver is switched off. Maximum radio transmit power: 2.07 dBm. Radio transmission frequency range: 433,92 MHz

- Disposal of packaging materials – Dispose of packaging materials which are no longer needed in accordance with applicable local regulations.
- Disposal of the device – The adjacent symbol of a crossed-out wheellie bin means that this device is subject to Directive 2012/19/EU.
- Disposal of batteries – Used batteries may not be disposed of in household waste. Only dispose of batteries when they are fully discharged. Dispose of batteries according to local regulations.
- Trust Electronics Ltd. declares that item number 71001/71001-02 is in compliance with Directive Electromagnetic Compatibility Regulations 2016, Radio Equipment Regulations 2017.
- The full text of the declaration of conformity is available at the following internet address:

www.trust.com/compliance

- Trust International B.V. declares that item number 71001/71001-02 is in compliance with Directive 2014/53/EU – 2011/65/EU. The full text of the EU declaration of conformity is available at the following web address:

www.trust.com/compliance

Declaration of Conformity

Trust International B.V. declares that this Trust Smart Home-product:

- **Model:** AYCT-102 Remote Control
- **Item number:** 71001/71001-02
- **Intended use:** Indoor

is in compliance with the essential requirements and other relevant provisions of the following directives:

- ROHS 2 Directive (2011/65/EU)
- RED Directive (2014/53/EU)

The full text of the EU declaration of conformity is available at the following web address:

www.trust.com/compliance

TRUST SMART HOME

LAAN VAN BARCELONA 600
3317DD DORDRECHT
NEDERLAND

www.trust.com

Trust Electronics Ltd.,


Sopwith Dr, Weybridge, KT13 0NT, UK. All brand names are registered trademarks of their respective owners. Specifications are subject to change without prior notice. Made in China.

TECHNICAL SPECIFICATIONS

Codesystem	Automatic
Number of Channels	16 + group on/off
Battery	3V lithium battery type CR2032 (included)
Size	HxWxD: 130 x 34 x 16 mm

www.trust.com

Documents / Resources

	<p>Trust AYCT-102 Remote Control [pdf] User Manual AYCT-102 Remote Control, AYCT-102, Remote Control, Control</p>
---	---

References

- [!\[\]\(849840539e55921a3851a4ff96d7400d_img.jpg\) Trust.com - Contact & Support - Compliance](#)
- [!\[\]\(c176e0b06f6c5dd85a4598b214d1ebba_img.jpg\) Trust.com - Home](#)
- [!\[\]\(66a18e26647fc145bd9198dd182dd107_img.jpg\) Trust.com - Home](#)
- [!\[\]\(572bcf30fdd4de64673b94584b7c6eca_img.jpg\) Trust.com - Remote Control AYCT-102](#)
- [!\[\]\(ba6dc7fecffbf82e7fd414c1c97a1ece_img.jpg\) Trust.com - Contact & Support - Compliance](#)
- [!\[\]\(7b0c59a8d567ae8f4c94e1b0dfc0504e_img.jpg\) Trust.com - Contact & Support - Safety information](#)
- [!\[\]\(6e7b00b003bc1efbd5a833fe586c1576_img.jpg\) Trust.com - Contact & Support - Warranty conditions](#)