

Trust ACM-3500-3 Start Line Receiver



Trust ACM-3500-3 Start Line Receiver User Manual

[Home](#) » [Trust](#) » Trust ACM-3500-3 Start Line Receiver User Manual 

Contents

- [1 Trust ACM-3500-3 Start Line Receiver](#)
- [2 ACM-3500-3 3-IN-1 BUILD-IN SWITCH](#)
- [3 Safety Instructions](#)
- [4 Declaration of Conformity](#)
- [5 TECHNICAL SPECIFICATIONS](#)
- [6 Documents / Resources](#)
 - [6.1 References](#)

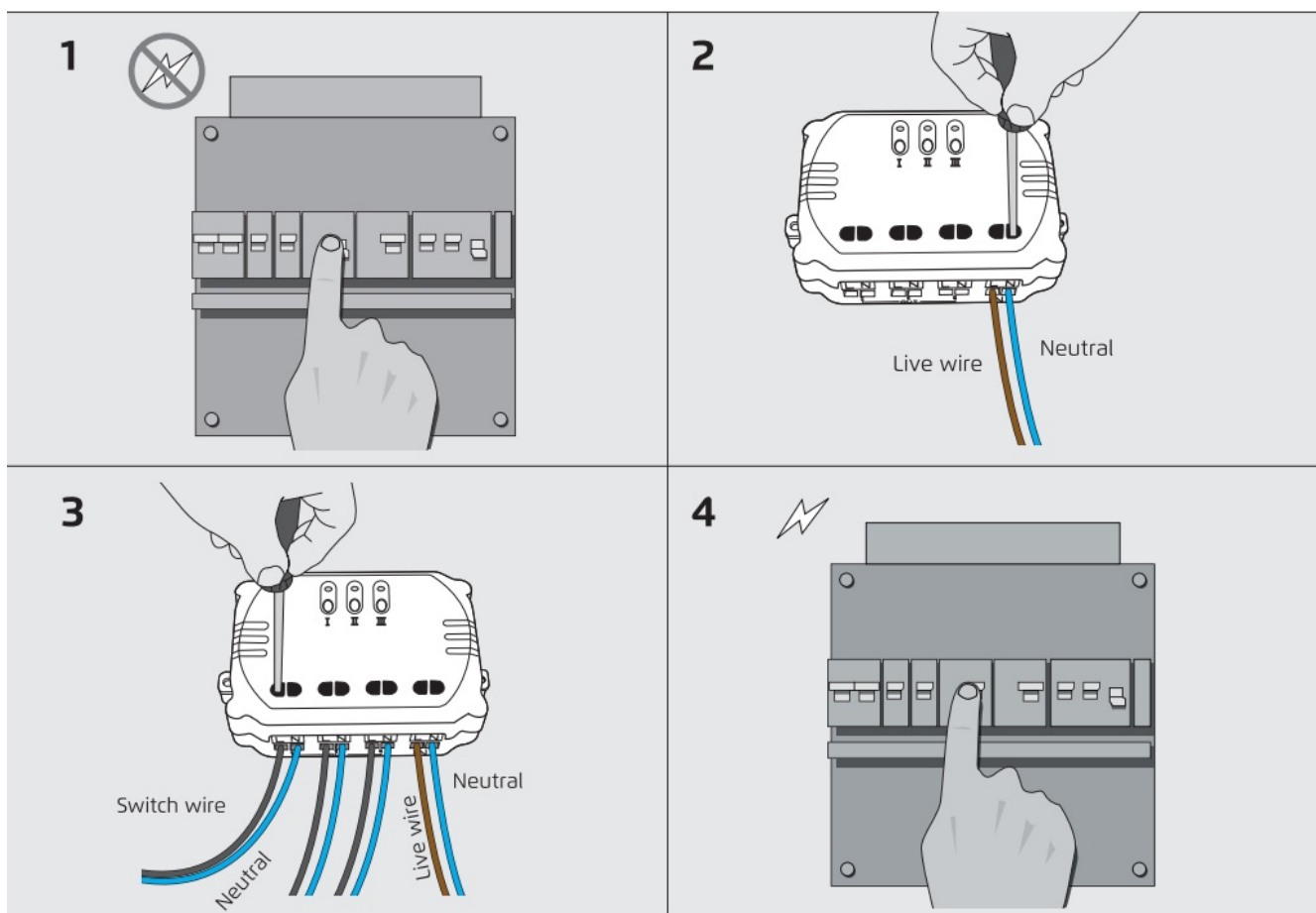
Trust.

Trust ACM-3500-3 Start Line Receiver

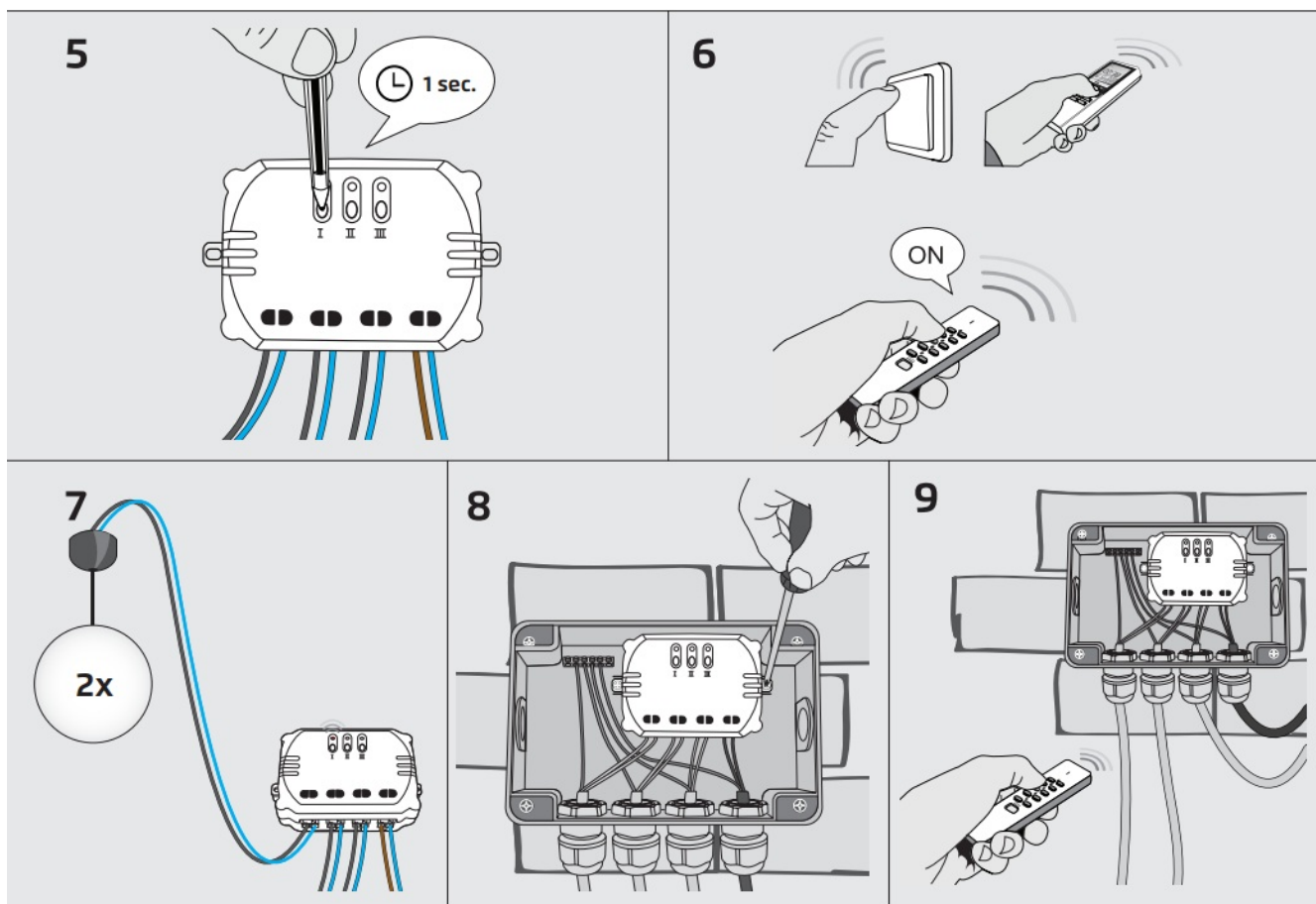


ACM-3500-3 3-IN-1 BUILD-IN SWITCH

1. Switch off the mains power (electric meter box)



2. Connect the live wire and neutral wire to [IN]
3. Connect the (brown) live wire to [L]. Connect the (blue) neutral wire to [N]. Contact an electrician when in doubt about wiring. Tighten the clamping screws.
4. Connect lamp/device wiring to [OUT] For each lamp/device, connect 2 wires to the [L] and [N] contact of output I, II or III. Contact an electrician when in doubt about wiring. Tighten the clamping screws.
5. Do not exceed the total maximum load: of 3500W.



6. Switch on the mains power (electric meter box) to continue the installation

7. Shock hazard! Do not contact any exposed wiring. Only touch the plastic housing of this product.

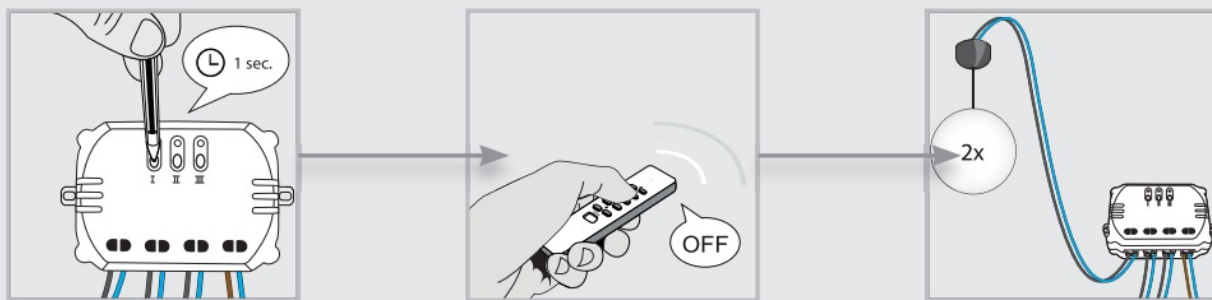
8. Activate learn mode Press the learn button of port I, II or III on the receiver for 1 second. The learn mode for this port will be active for 15 seconds and the LED indicator will blink slowly.

9. Assign Trust Smart Home transmitter code

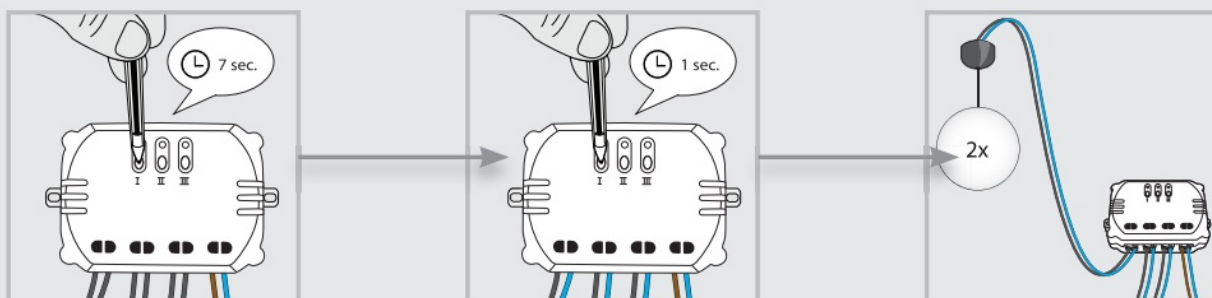
While the learn mode is active, send an ON signal with any Trust Smart Home transmitter to assign the code to the receiver's memory.

10. Code Confirmation

10



11



The receiver will switch on/off 2 times to confirm the code has been received. Per port, the receiver can store up to 6 different transmitter codes in its memory. The memory will be preserved when the receiver is moved to another location or in case of power failure.

11. Affix the receiver

Secure the receiver to a surface for extra stability. For outdoor use, mount the receiver in a waterproof junction box and cover up any exposed wiring.

12. Manual operation with a Trust Smart Home transmitter

1. Send an ON-signal to switch ports I, II or III of the receiver on.
2. Send an OFF signal to switch ports I, II or III of the receiver off.

Single code delete

1. Press the learn button of ports I, II or III for 1 second. The learn mode will be active for 15 seconds and the LED indicator will blink slowly.
2. While the delete mode is active, send an OFF signal with a specific Trust Smart Home transmitter to delete the code.
3. The receiver will switch on/off 2 times to confirm code deletion.

Full memory delete

1. Press and hold the learn button of port I, II or III (aprox. 7 sec.) until the LED indicator starts blinking fast. The delete mode will be active for 15 seconds.
2. While the delete mode is active, press the learn button of the same port again for 1 second.
3. The receiver will switch on/off 2 times to confirm memory deletion.

Safety Instructions

Product support: www.trust.com/71053. Warranty conditions: www.trust.com/warranty To ensure safe handling of the device, follow the safety advice on: www.trust.com/safety The Wireless range is strongly dependent on local conditions such as the presence of HR glass and reinforced concrete Never use Trust Smart Home products for life-support systems. This product is not water-resistant. Do not attempt to repair this product. Wire colours may vary per country. Contact an electrician when in doubt about wiring.

Never connect lights or equipment that exceed the maximum load of the receiver. Exercise caution when installing a receiver voltage may be present, even when a receiver is switched off. Radio transmission frequency range: 433,92 MHz Disposal of packaging materials – Dispose of packaging materials that are no longer needed by applicable local regulations. The packaging materials have been selected for their environmental friendliness and ease of disposal and are therefore recyclable.

Disposal of the device – The adjacent symbol of a crossed-out wheelie bin means that this device is subject to Directive 2012/19/EU. This directive states that this device may not be disposed of in normal household waste at the end of its usable life, but must be handed over to specially set-up collection locations, recycling depots or disposal companies. This disposal is free of charge for the user. Disposal of batteries – Used batteries may not be disposed of in household waste. Only dispose of batteries when they are fully discharged. Dispose of batteries according to local regulations. Cover the poles of partially discharged batteries with tape to prevent short circuits.

Trust Electronics Ltd. declares that item number 71053/71053-02 complies with Directive Electromagnetic Compatibility Regulations 2016, and Radio Equipment Regulations 2017. The full text of the Declaration of Conformity is available at the following internet address: www.trust.com/compliance Trust International B.V. declares that item number 71053/71053-02 complies with Directive 2014/53/EU – 2011/65/EU. The full text of the EU Declaration of Conformity is available at the following web address: www.trust.com/compliance

Declaration of Conformity

Trust International B.V. declares that this Trust Smart Home-product:

Model: ACM-3500-3 3 in 1 Build Switch

Item number: 71053/71053-02

Intended use: Indoor

complies with the essential requirements and other relevant provisions of the following directives:

ROHS 2 Directive (2011/65/EU)

RED Directive (2014/53/EU)

The full text of the EU Declaration of Conformity is available at the following web address:

www.trust.com/compliance

TRUST SMART HOME LAAN VAN BARCELONA 600 3317DD DORDRECHT NEDERLAND

www.trust.com

Trust Electronics Ltd.,

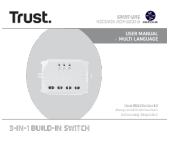
Sopwith Dr, Weybridge, KT13 0NT, UK. All brand names are registered trademarks of their respective owners.

Specifications are subject to change without prior notice. Made in China.

TECHNICAL SPECIFICATIONS

| | |
|------------------|--|
| Codesystem | Automatic |
| Voltage | 230V/50Hz |
| Maximum Wattage | 3500 Watt (to be distributed over the 3 outputs) |
| Size | HxWxL: 58 x 95 x 28 mm |
| Memory addresses | 6 |

Documents / Resources

| | |
|--|---|
|  <p>Trust. COMMERCIAL RECEIVERS RECEIVER (ACM-3500-3)</p> <p>3-IN-1 BUILT-IN SWITCH</p> | <p>Trust ACM-3500-3 Start Line Receiver [pdf] User Manual</p> <p>ACM-3500-3 Start Line Receiver, ACM-3500-3, Start Line Receiver, Line Receiver, Receiver</p> |
|--|---|

References

- [Trust.com - Contact & Support - Compliance](#)
- [Trust.com - Home](#)
- [Trust.com - Home](#)
- [Trust.com - 3-in-1 Built-in Switch ACM-3500-3](#)
- [Trust.com - Contact & Support - Compliance](#)
- [Trust.com - Contact & Support - Safety information](#)
- [Trust.com - Contact & Support - Warranty conditions](#)
- [User Manual](#)

[Manuals+](#), [Privacy Policy](#)

This website is an independent publication and is neither affiliated with nor endorsed by any of the trademark owners. The "Bluetooth®" word mark and logos are registered trademarks owned by Bluetooth SIG, Inc. The "Wi-Fi®" word mark and logos are registered trademarks owned by the Wi-Fi Alliance. Any use of these marks on this website does not imply any affiliation with or endorsement.