



Trust ACM-2300-HC Build In Light Switch User Manual

[Home](#) » [Trust](#) » Trust ACM-2300-HC Build In Light Switch User Manual 

Trust.

START-LINE
RECEIVER ACM-2300-HC
USER MANUAL
MULTI-LANGUAGE



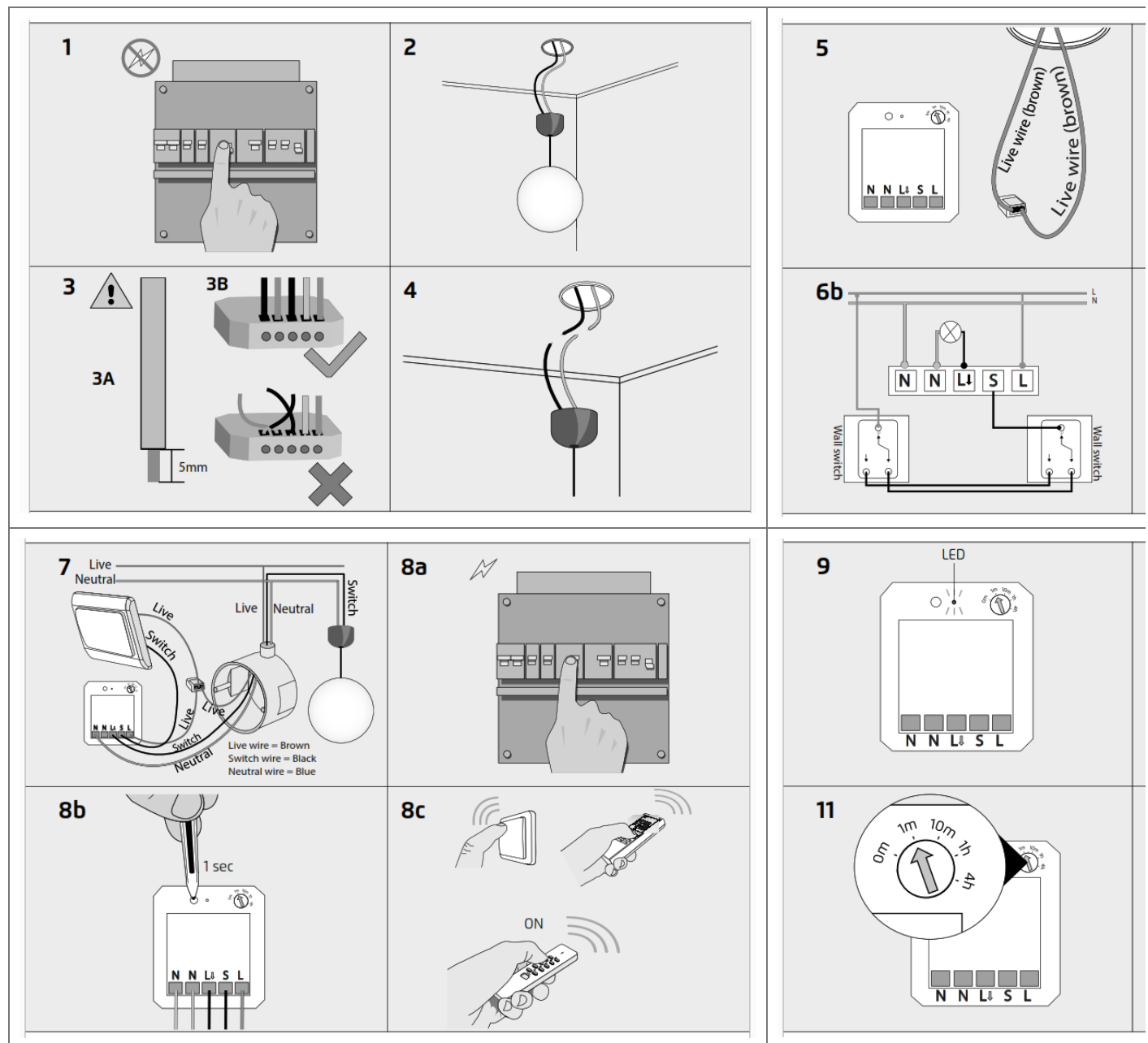
SWITCH-IN

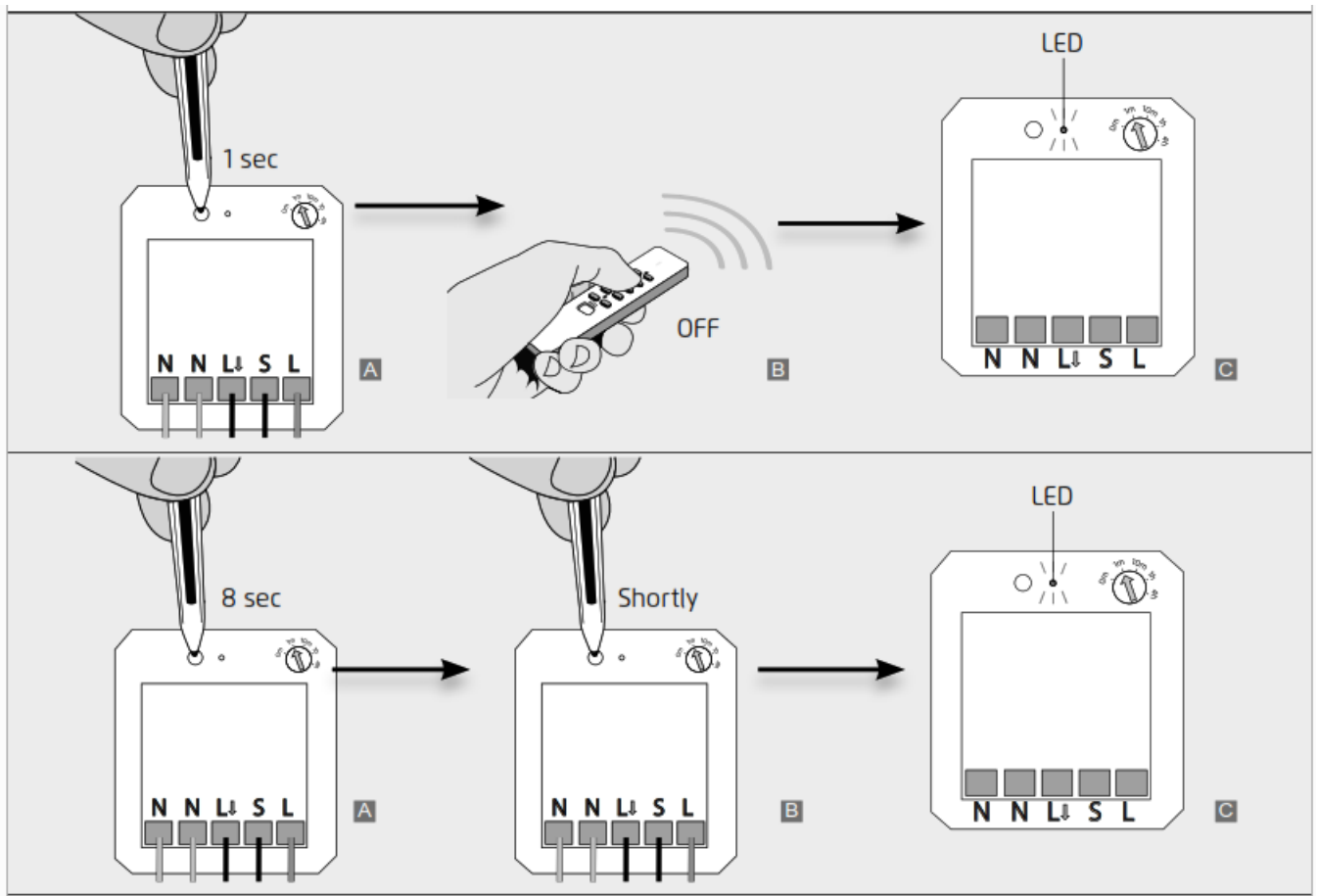
Contents

- 1 ACM-2300-HC Build-In Light Switch
- 2 Safety Instructions
- 3 TECHNICAL SPECIFICATIONS
- 4 Documents / Resources
 - 4.1 References
- 5 Related Posts

ACM-2300-HC Build-In Light Switch

BUILD-IN SWITCH





1. Disable mains power

Always turn OFF the mains power (In the fuse box) before you begin the installation or removal of this product. The ACM-2300-HC can be used for either two wall switches connected with one lamp (stairwell/hotel circuit) or for one single wall switch connected to one lamp.

2. Loosen ceiling lights

Remove the existing lighting from the ceiling, leaving the wires connected to the lighting. Lighting may not exceed the maximum wattage. If there is no live wire (brown) present, it must be installed. Wire colors may vary per country. Consult an electrician if in doubt about wire colors.

3. Warning for stripping wires

3A. Make sure the wires are stripped for 5mm.

3B. When connecting the wires to the ACM-2300-HC make sure the stripped wires are pressed firmly in the module, no exposed wires are visible and the wires cannot touch each other. This can cause a short circuit.

4. Disconnect the switch wire and neutral wire

To install the ACM-2300-HC disconnect the switch wire (black) and the neutral wire (blue) of the lamp (Disconnect from the terminal block or cut the wires if necessary)

5. Connect the live wire to a terminal block

Connect the live wire (brown) from the ceiling box to a terminal block. Connect the other end of the live wire (brown) also back into the same terminal block.

6A. Connect the wires to the module

- Connect the neutral wire (blue) from the ceiling box to the outer [N] contact of the module
- Connect the switch wire (black) from the ceiling box to the [S] contact.
- Connect the neutral wire (blue) from the lamp to the middle [N] contact.
- Connect the switch wire (black) from the lamp to the [L↓] contact.
- Connect one new live wire (brown) from the live wire (brown) terminal block to the [L] contact.
- Tighten the terminal screws firmly.

6B. This is the technical installation schematic of the ACM-2300-HC with two wall switches (hotel/ stairwell

circuit).

6C. This is the technical installation schematic of the ACM-2300-HC with one wall switch.

7. Installation behind an existing wall switch

Take note how the existing wires are connected and disconnect the wall switch.

- Connect the switch wire (black) from the wall box to the [**L↓**] terminal.
- Connect the live wire (brown) to a terminal block.
- Connect a new live wire (brown) from the terminal block to the L contact.
- Connect a new live wire (brown) from the terminal block to the wall switch (in the place where the live wire (brown) was previously placed)
- Connect a (blue) neutral wire to the left [N] contact. If there is no neutral wire present, it must be pulled. Consult an electrician if in doubt.
- Connect a new black switch wire to the S contact and connect it to the wall switch (in the place where the black switch wire was previously placed)

8A Enable mains power

Switch the mains' power ON before proceeding with the installation.



Make sure no stripped parts of wires are touched after this step. The LED indicator on the receiver will light up for a few seconds when voltage is applied.

8B. Activate pairing mode

Press for about 1 second (with a pointed object) on the Connect button to activate the pairing mode. The pairing mode will be active for 12 seconds and the LED indicator on the receiver will flash slowly.

8C. Send an ON signal

While the LED indicator flashes, press the ON button on a Trust Smart Home transmitter to pair the transmitter to the ACM-2300-HC. (Or activate a Trust Smart Home sensor).

9. Pairing confirmation

The LED on the module will blink fast in order to confirm that the code is stored. The receiver can store up to 32 different transmitter codes in its memory. The memory is retained when the receiver is installed elsewhere or when there is a power failure.

10. Wireless control

Send the transmitter an ON signal to turn the light on wirelessly.

Send the transmitter an OFF signal to turn the light off wirelessly.

The existing wall switches which are used to control the connected lighting can still be used.

11. Set the desired switch-off time

Set the switch-off time to the desired position with a flathead screwdriver. The switch-off time can also be changed after the switch is paired to a Trust Smart Home transmitter.

0m: No OFF signal is sent automatically.

1m, 10m, 1h, and 4h: An OFF signal is automatically sent after 1 minute, 10 minutes, 1 hour or 4 hours.

12. Placing the receiver

Place the receiver in the ceiling box. Mount the lights back in place. Make sure that you can always reach the receiver, for example, to reset it, or to register a new transmitter.



Make sure no stripped parts of wires touch each other.

Deleting a single transmitter code

Press for about 1 second on the Connect button. The pairing mode will be active for 12 seconds and the LED indicator on the receiver will flash slowly.

B Send while the pairing mode is active with the connected Trust Smart Home transmitter an OFF signal. If necessary, consult the instruction manual of the transmitter.

C The LED on the module will flash to confirm that the code has been removed.

Repeat this procedure to delete several transmitters from the receiver.

Erase entire memory

A Press the Connect button for about 8 seconds until the LED indicator flashes quickly.

B When the LED indicator flashes rapidly, press the Connect button again shortly to confirm that you want to completely erase the memory.

C The LED on the module flashes to confirm that the memory has been erased.

Safety Instructions

Product support: www.trust.com/71229. Warranty conditions: www.trust.com/warranty

To ensure safe handling of the device, follow the safety advice on: www.trust.com/safety

The Wireless range is strongly dependent on local conditions such as the presence of HR glass and reinforced concrete. Never use Trust Smart Home products for life-support systems. This product is not water-resistant. Do not attempt to repair this product. Wire colors may vary per country. Contact an electrician when in doubt about wiring. Never connect lights or equipment that exceed the maximum load of the receiver. Exercise caution when installing a receiver voltage may be present, even when a receiver is switched off. Radio transmission frequency range: 433,92 MHz



Disposal of packaging materials – Dispose of packaging materials that are no longer needed in accordance with applicable local regulations.



Disposal of the device – The adjacent symbol of a crossed-out wheeled bin means that this device is subject to Directive 2012/19/EU.



Disposal of batteries – Used batteries may not be disposed of in the household waste. Only dispose of batteries when they are fully discharged. Dispose of batteries according to local regulations.



Trust Electronics Ltd. declares that item number 71229/71229-02 is in compliance with Directive Electromagnetic Compatibility Regulations 2016 and Radio Equipment Regulations 2017. The full text of the declaration of conformity is available at the following internet address: www.trust.com/



Trust International B.V. declares that item number 71229/71229-02 is in compliance with Directive 2014/53/EU – 2011/65/EU. The full text of the EU declaration of conformity is available at the following web address: www.trust.

Declaration of Conformity

Trust International B.V. declares that this Trust Smart Home product:

Model:	ACM-2300-HC Build-in switch
Item number:	71229/71229-02
Intended use:	Indoor

is in compliance with the essential requirements and other relevant provisions of the following directives:

ROHS2 Directive (2011/65/EU)

RED Directive (2014/53/EU)

The full text of the EU declaration of conformity is available at the following web address:

www.trust.com/compliance

TRUST SMART HOME

LAAN VAN BARCELONA 600

3317DD DORDRECHT

NEDERLAND

www.trust.com

Trust Electronics Ltd.,

Sopwith Dr, Weybridge, KT13 0NT, UK.

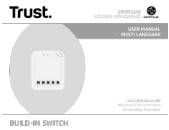
All brand names are registered trademarks of their respective owners. Specifications are subject to change without prior notice. Made in China.

TECHNICAL SPECIFICATIONS

Code system	Automatic
Maximum load	2300 Watt Resistive Load
Memory addresses	32
Size	HxWxL: 15 x 40 x 45 mm
Power	230VAC/50Hz

www.trust.com

Documents / Resources

	<p>Trust ACM-2300-HC Build In Light Switch [pdf] User Manual ACM-2300-HC, Build In Light Switch, ACM-2300-HC Build In Light Switch</p>
---	--

References

- [Trust.com - Contact & Support - Compliance](#)
- [Trust.com - Home](#)
- [Trust.com - Home](#)
- [Trust.com - Built-in Switch ACM-2300-HC](#)
- [Trust.com - Contact & Support - Compliance](#)
- [Trust.com - Contact & Support - Safety information](#)
- [Trust.com - Contact & Support - Warranty conditions](#)