



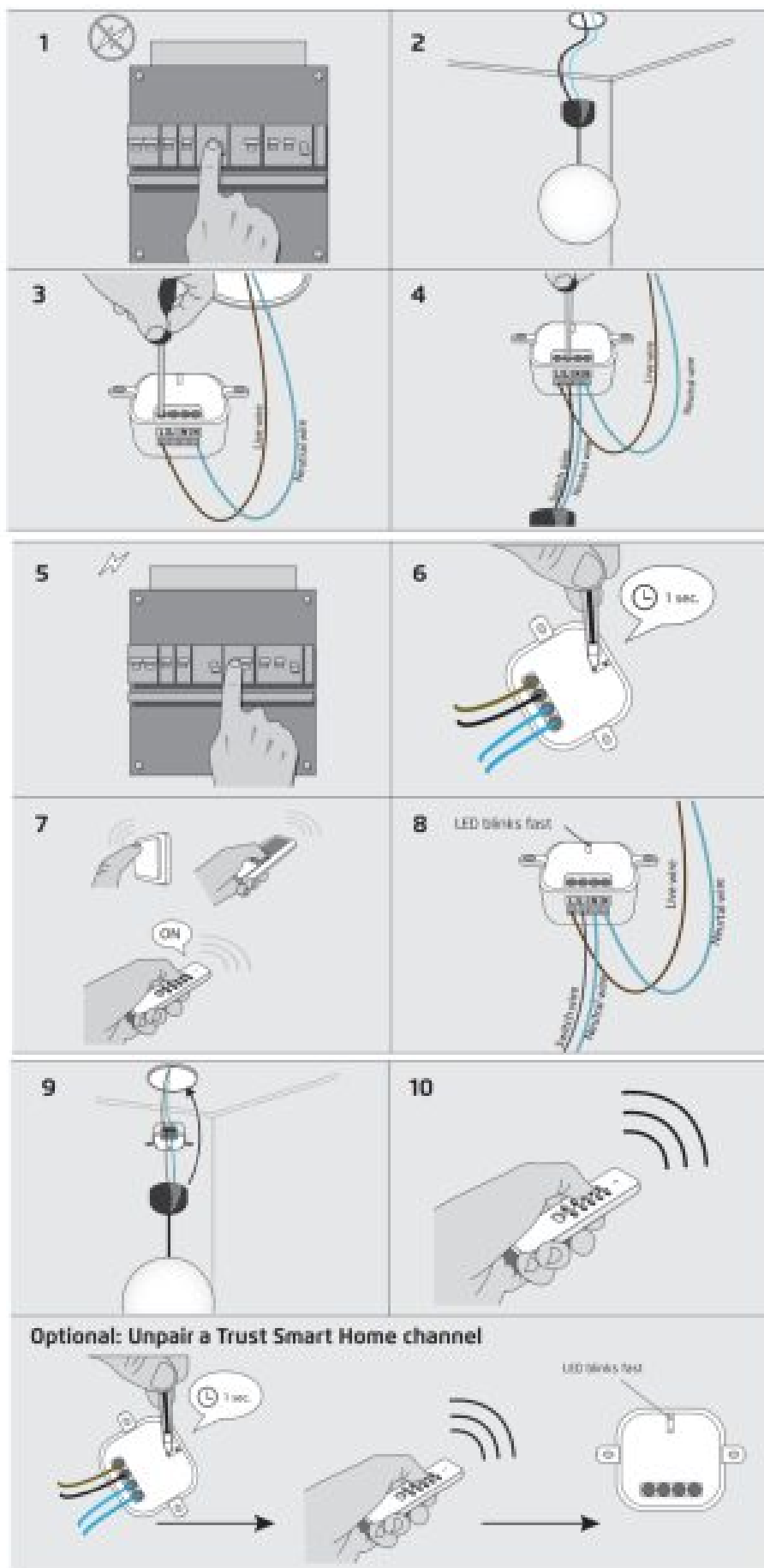
## Trust ACM-2000 Build-In Switch User Manual

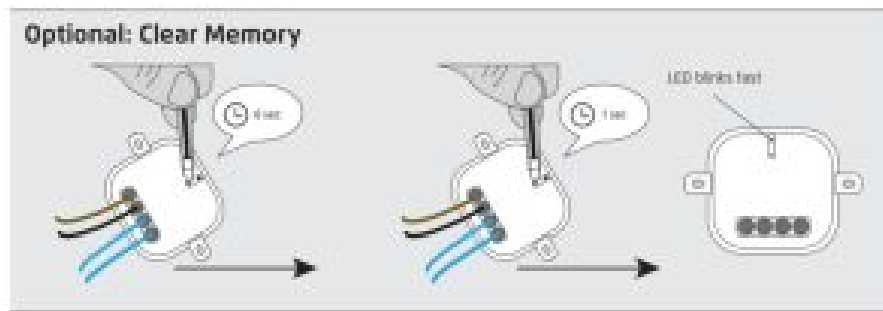
[Home](#) » [Trust](#) » Trust ACM-2000 Build-In Switch User Manual 

**Trust** | SMART Home  
ACM-2000 Build-In Switch  
User Manual



Item 71269 Version 2.0  
Visit [www.trust.com](http://www.trust.com)  
for the latest instructions





**1. Switch off the mains voltage**

**2. Remove the existing lighting**

Detach the existing lighting and disconnect the wires. Do not exceed the maximum load: 2000W.

**3. Connect the live and neutral wire**

Connect the live wire to the outer left [L] terminal. Connect the neutral wire to the outer right [N] terminal. Tighten the clamping screws.

**4. Connect the switch wire and neutral wire to the lamp**

Connect the (black) switch wire from the lamp to the [LL ] socket.

Connect the (blue) neutral wire from the lamp to the left [N] contact.

**5. Switch on the mains power (electric meter box) to continue the installation**

Shock hazard! Do not contact any exposed wiring. Only touch the plastic housing of this product.

**6. Activate learn-mode**

Press the learn button on the receiver for 1 second. The learn-mode will be active for 12 seconds and the LED indicator will blink slowly.

**7. Assign Trust Smart Home transmitter code**

While the learn-mode is active, send an ON-signal with any Trust Smart Home transmitter to assign the code to the receiver's memory.

**8. Code confirmation**

The LED will flash fast to confirm the code has been received. The receiver can store up to 32 different transmitter codes in its memory. The memory will be preserved when the receiver is moved to another location or in case of power failure.

**9. Mount the receiver in the box**

Mount the receiver in the wall or ceiling box (break off the mounting tabs if necessary) and cover it up with a blind cover or mount the light back onto the ceiling again.

**10. Manual operation with a Trust Smart Home transmitter**

Press ON to switch the receiver on

Press OFF to switch the receiver off

**Contents**

[1 Single code delete](#)

[2 Full memory delete](#)

[3 Safety Instructions](#)

[4 Documents /  
Resources](#)

[4.1 References](#)

[5 Related Posts](#)

## Single code delete

- A** Press the learn button for 1 second. The learn-mode will be active for 12 seconds and the indicator will blink slowly.
- B** While the learn-mode is active, send an OFF signal of a specific Trust Smart Home transmitter to delete that code.
- C** The LED will flash fast to confirm code deletion.

## Full memory delete

- A** Press and hold the learn button on the receiver (approx. 6 sec.) until the LED indicator starts blinking fast. The delete mode will be active for 12 seconds.
- B** While the delete mode is active, press the learn button again for 1 second.
- C** The LED will flash fast to confirm the memory has been cleared.






## Safety Instructions

Product support: [www.trust.com/71269](http://www.trust.com/71269). Warranty conditions: [www.trust.com/warranty](http://www.trust.com/warranty)

To ensure safe handling of the device, follow the safety advice on: [www.trust.com/safety](http://www.trust.com/safety)

The Wireless range is strongly dependent on local conditions such as the presence of HR glass and reinforced concrete

Never use Trust Smart Home products for life-support systems. This product is not water-resistant. Do not attempt to repair this product. Wire colors may vary per country. Contact an electrician when in doubt about wiring. Never connect lights or equipment that exceed the maximum load of the receiver. Exercise caution when installing a receiver voltage may be present, even when a receiver is switched off.

	Disposal of packaging materials – Dispose of packaging materials that are no longer needed in accordance with applicable local regulations.
	Disposal of the device – The adjacent symbol of a crossed-out wheeled bin means that this device is subject to Directive 2012/19/EU.
	Disposal of batteries – Used batteries may not be disposed of in the household waste. Only dispose of batteries when they are fully discharged. Dispose of batteries according to local regulations.
	Trust Electronics Ltd. declares that item number 71269 is in compliance with Directive Electromagnetic Compatibility Regulations 2016 and Radio Equipment Regulations 2017. The full text of the declaration of conformity is available at the following internet address: <a href="http://www.trust.com/">www.trust.com/</a>
	Trust International B.V. declares that item number 71269 is in compliance with Directive 2014/53/EU – 2011/65/EU. The full text of the EU declaration of conformity is available at the following web address: <a href="http://www.trust.com">www.trust.com</a>



Declaration of Conformity

Trust International B.V. declares that this Trust Smart Home-product:

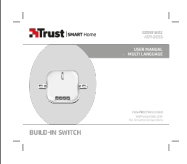
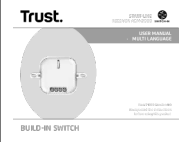
Model:	ACM-2000 Build-IN SWITCH
Item number:	71269
Intended use:	Indoor

is in compliance with the essential requirements and other relevant provisions of the following directives:  
ROHS 2 Directive (2011/65/EU)  
RED Directive (2014/53/EU)

**TRUST SMART HOME**  
LAAN VAN BARCELONA 600  
3317DD DORDRECHT  
NEDERLAND  
[www.trust.com](http://www.trust.com)

**Trust Electronics Ltd.,**  
Sopwith Dr, Weybridge, KT13 0NT, UK.  
All brand names are registered trademarks of their respective owners. Specifications are subject to change without prior notice.  
**Made in China.**  
[www.trust.com](http://www.trust.com)

## Documents / Resources

	<a href="#">Trust ACM-2000 Build-In Switch</a> [pdf] User Manual ACM-2000, Build-In Switch, ACM-2000 Build-In Switch
	<a href="#">Trust ACM-2000 Build-In Switch</a> [pdf] User Manual ACM-2000 Build-In Switch, ACM-2000, Build-In Switch, Switch

## References

- [Trust.com - Contact & Support - Compliance](#)
- [Trust.com - Home](#)
- [Trust.com - Home](#)
- [Trust.com - Built-in Switch ACM-2000](#)
- [Trust.com - Contact & Support - Compliance](#)
- [Trust.com - Contact & Support - Safety information](#)
- [Trust.com - Contact & Support - Warranty conditions](#)