



# Trust ACDB-8000BC Wireless Doorbell with Push Button Transmitter User Manual

[Home](#) » [Trust](#) » Trust ACDB-8000BC Wireless Doorbell with Push Button Transmitter User Manual 

## Contents

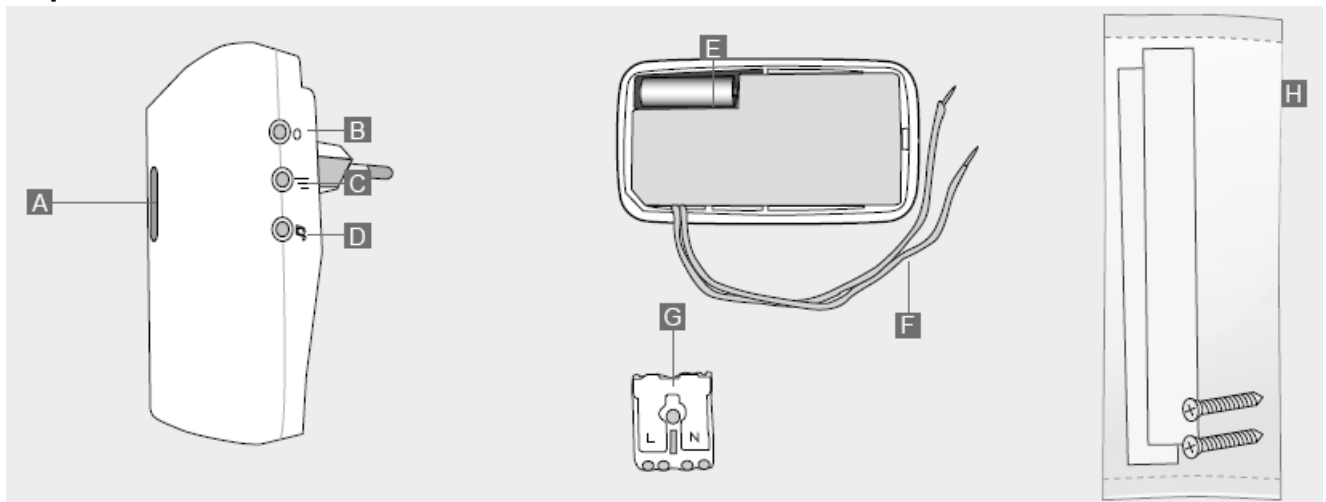
- [1 Trust ACDB-8000BC Wireless Doorbell with Push Button Transmitter](#)
- [2 Components](#)
- [3 Wireless control](#)
- [4 Transmitter installation](#)
- [5 Replacing the transmitter battery](#)
- [6 Safety Instructions](#)
- [7 TECHNICAL SPECIFICATIONS Doorbell](#)
- [8 Declaration of Conformity](#)
- [9 Documents / Resources](#)
  - [9.1 References](#)
- [10 Related Posts](#)



**Trust ACDB-8000BC Wireless Doorbell with Push Button Transmitter**

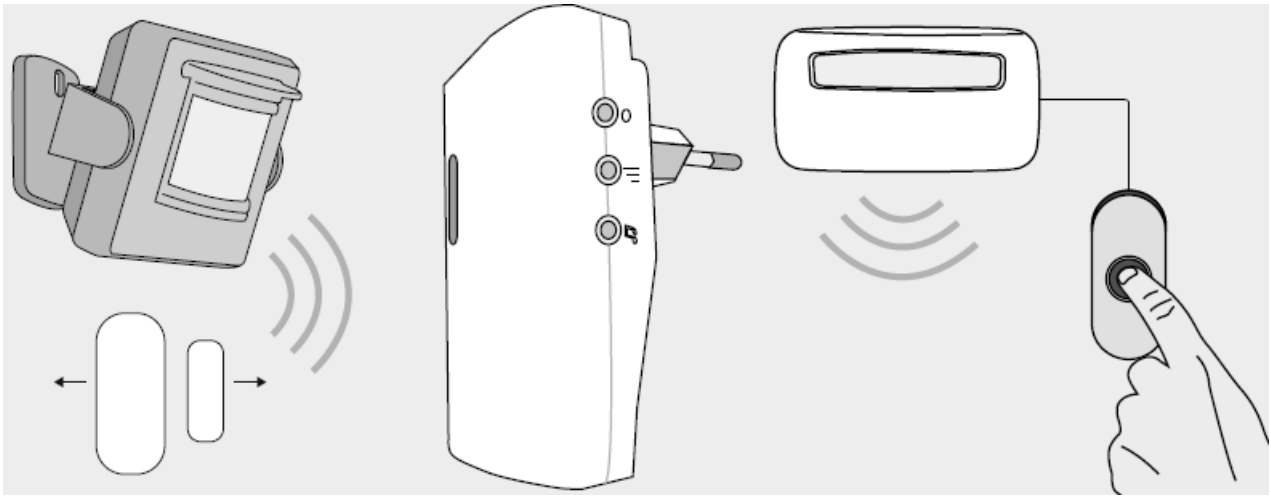


## Components



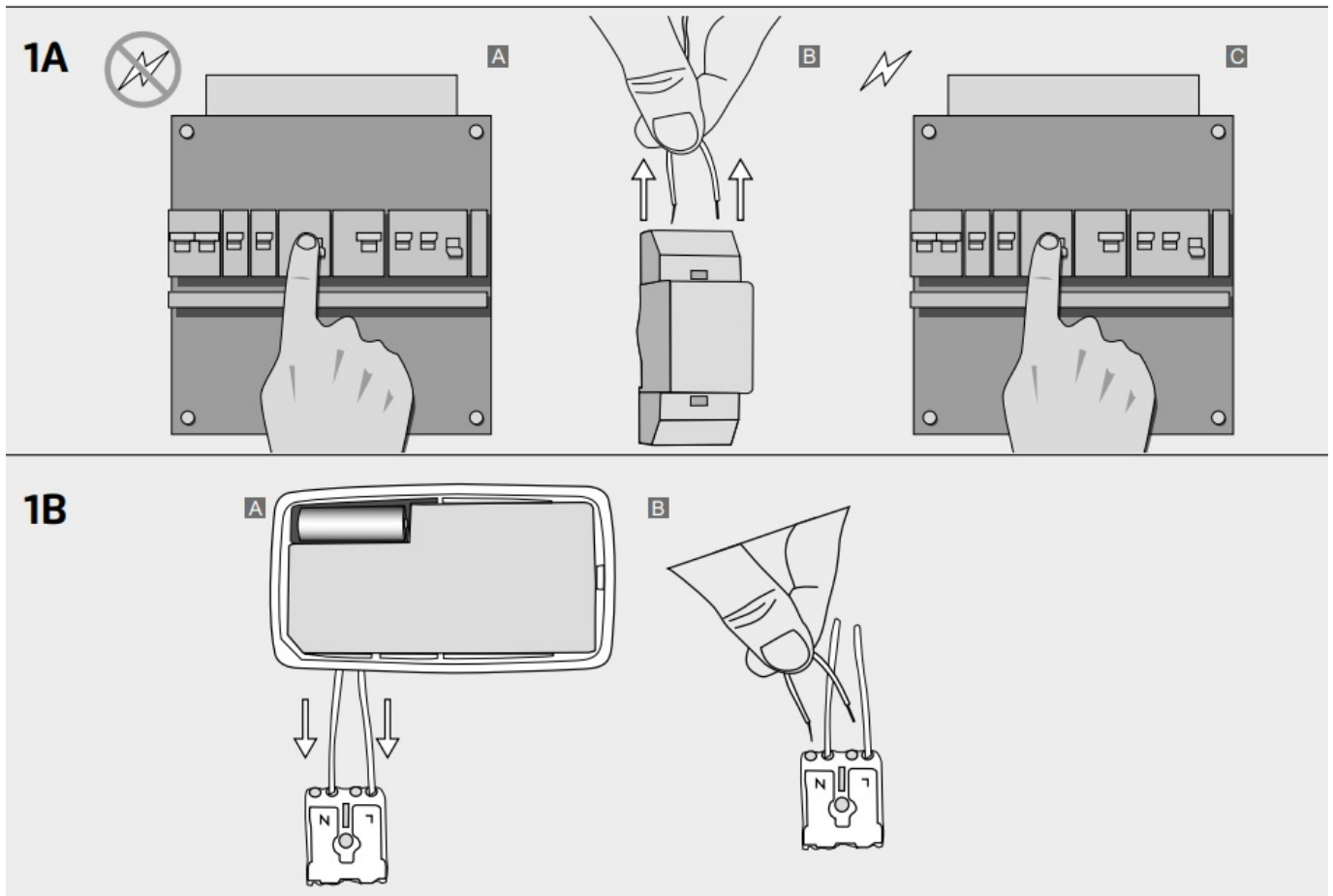
- **A** LED indicator doorbell
- **B** Pair button
- **C** Volume button
- **D** Melody button
- **E** Battery holder (including 12V A23 alkaline battery)
- **F** Switch wires
- **G** Terminal block
- **H** Adhesive strips and screws

## Wireless control



This wireless doorbell can be operated wirelessly with a minimum of 1 and a maximum of 32 Trust Smart Home transmitters of your choice. This way you can play a desired melody using the supplied transmitter. In addition, you can also have a melody play when movement is detected (via a wireless motion detector) and/or when a window or door is opened (via the wireless door/window contact). You can set a separate melody for each Trust Smart Home transmitter, for example when someone presses the existing push button or when a door or window is opened.

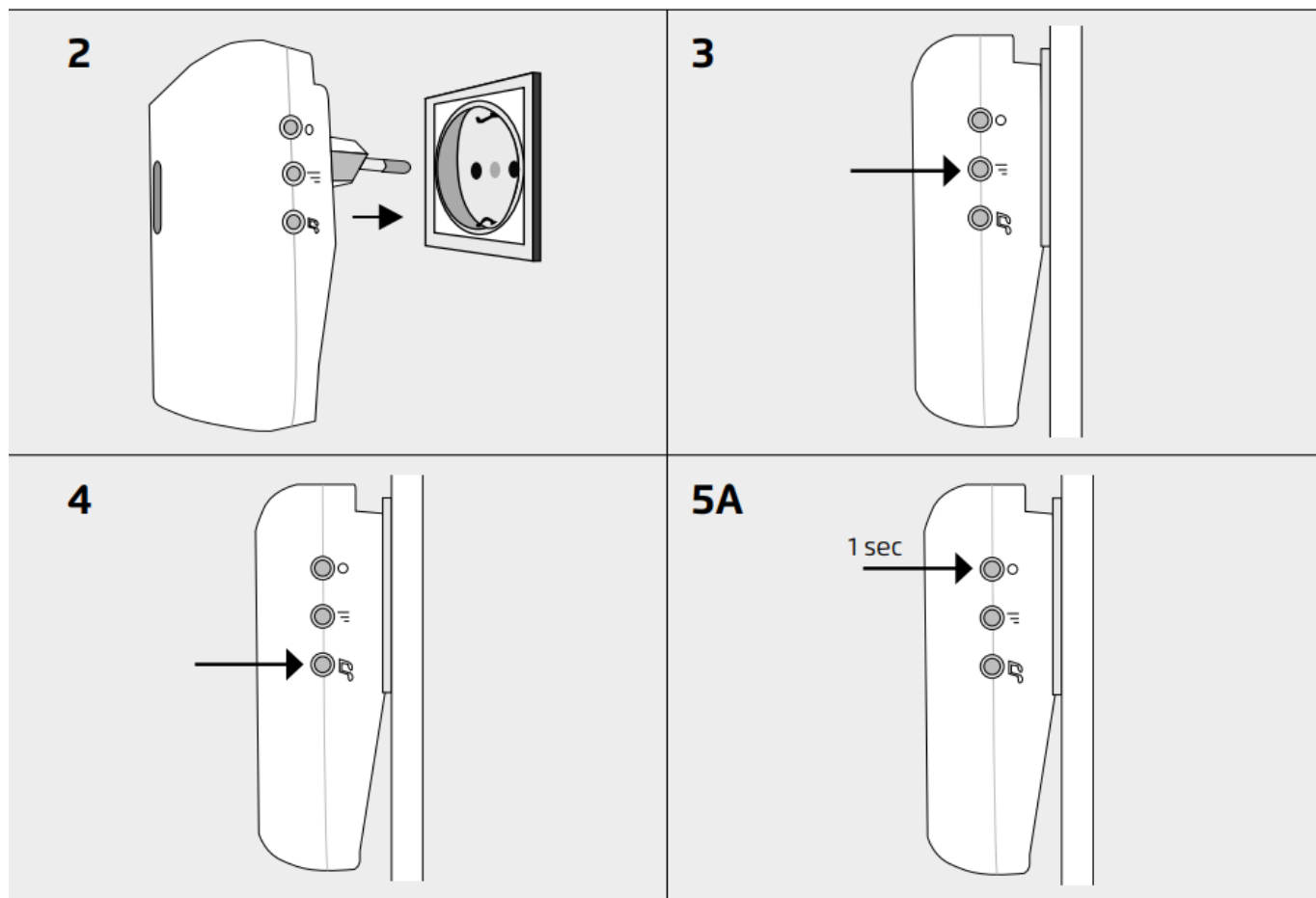
## Transmitter installation



- **A** Always switch off the mains voltage (in the meter box) before you start disconnecting the existing bell installation.
- **B** Follow the wires from your existing doorbell push button that usually lead to your meter box, and disconnect it from the current installation (usually a transformer). Your existing bell installation will not work anymore as a result.

- **C** Turn the power back on before continuing with the installation. Make sure there is no more exposed wiring.

1. **A** Press the clamps of the terminal block. Then insert the push button transmitter wires into the terminal block inputs (L+N).
2. **B** Press the clamps of the terminal block. Then insert the wires from the existing doorbell push button into the remaining terminals of the terminal block (L+N).



- **2. Place receiver**

- Plug the doorbell into an indoor socket outlet. If you move the doorbell to a different socket, the paired transmitters will remain in the memory.

- **3. Select desired volume**

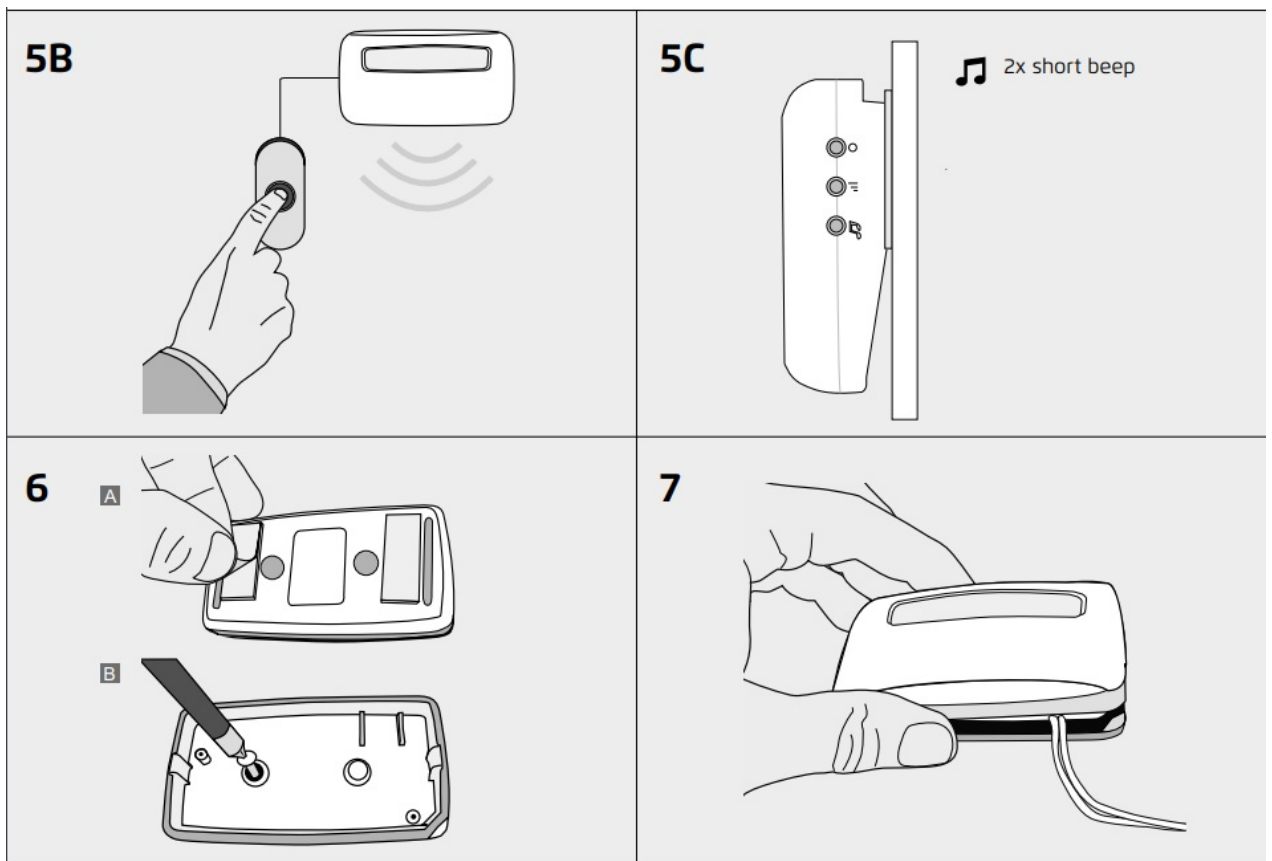
- First press the volume button to set the desired volume level. There are 4 levels: High, Medium, Low and Disabled (LED indication only).

- **4. Select desired melody**

- Then press the melody button to select 1 of the 6 melodies. You can set a separate melody for each transmitter (push button, motion detector, door/window sensor) by selecting it beforehand.

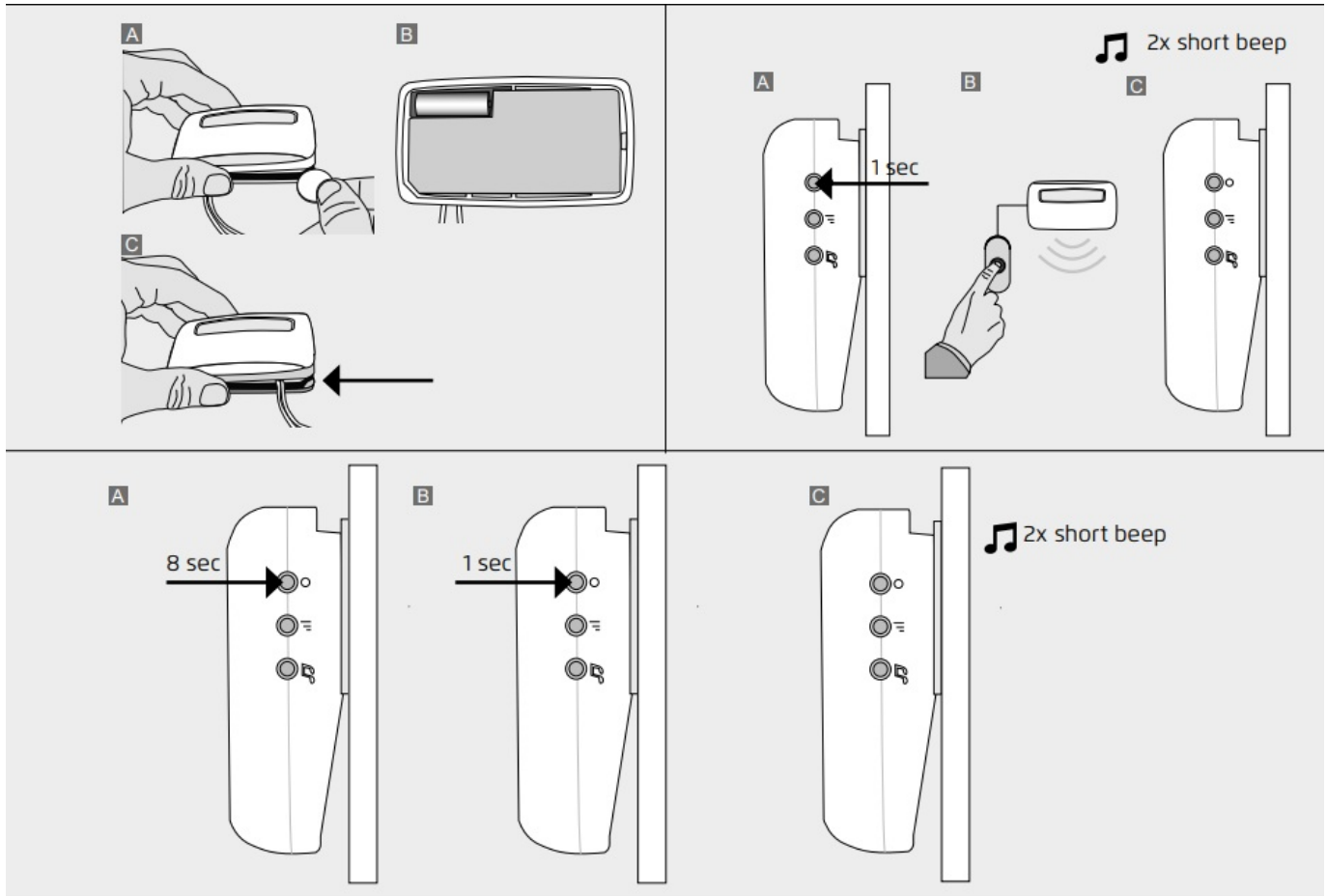
- **5A. Pair transmitter(s) to the doorbell**

- Do not press the pair button for more than 1 second to activate the learning mode.
- The learning mode will be active for 10 seconds and the LED indicator on the doorbell will flash slowly.



- **5B** Send an ON signal while the LED indicator is flashing by pressing your existing doorbell or with another Trust Smart Home transmitter to pair it.
- **5C** As soon as the transmitter has been paired, the wireless doorbell will give 2 short beeps. The transmitter, melody and volume are now paired to the transmitter.
  - The wireless doorbell is now ready for use.
  - The doorbell can store 32 different transmitters in its memory. If you want to pair multiple transmitters, you need to repeat steps 3 to 5c.
- **6A. Mount transmitter with double-sided tape**
  - Determine where the transmitter will be placed and mount the bottom of the transmitter with the supplied double-sided adhesive tape.
- **6B. Mount transmitter with supplied screws**
  - Determine where the transmitter will be placed and mount the bottom of the transmitter with screws.
- **7. Close push button transmitter**
  - Press the top half onto the bottom half. Both halves will only close if the recesses in the lower right corner match.

## Replacing the transmitter battery



- **A** For example, insert a coin into the notch in the lower right corner to open the transmitter. Carefully make a twisting movement and click both halves apart.
- **B** Place a new 12V A23 alkaline battery in the holder. Pay attention to the correct polarity.
- **C** Press the top half back onto the bottom half. Both halves will only close if the recesses in the lower right corner match.

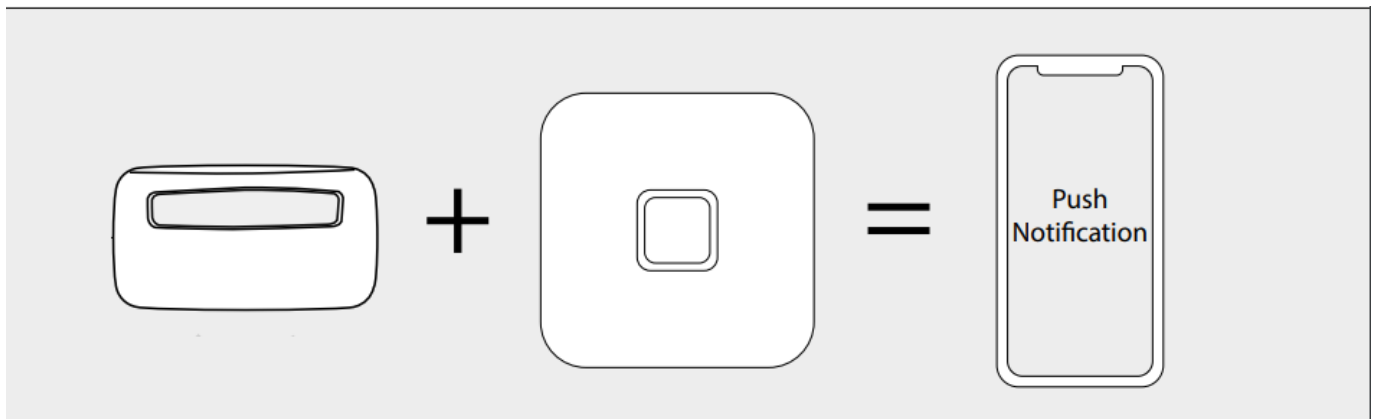
## Unpair a Trust Smart Home transmitter

- **A** Press the connect button for 1 second. The learning mode will be active for 10 seconds and the LED indicator on the receiver will flash slowly.
- **B** While the learning mode is active, send an ON signal with the transmitter of the linked Trust Smart Home transmitter that you want to unpair
- **C** As confirmation, the wireless doorbell gives 2 short beeps.

## Clear entire memory

- **A** Press the connect button (approx. 8 seconds) until the LED indicator starts flashing quickly. The reset mode will be active for 10 seconds and the LED indicator on the receiver will flash quickly.
- **B** While in reset mode, press the learn button again for 1 second to confirm that you want to completely erase the memory.
- **C** As confirmation, the wireless doorbell gives 2 short beeps.

## Combine transmitter with the Internet Control Station (ICS-2000) or Smart Bridge



Combine the push button transmitter with the Internet Control Station (ICS-2000) or Smart Bridge and also receive a push notification on your smartphone when the doorbell rings. For example, you can switch off the wireless doorbell in the evening and only receive a push notification when the doorbell is pressed.

## Safety Instructions

- **Product support:** [www.trust.com/71274](http://www.trust.com/71274).
- **Warranty conditions:** [www.trust.com/warranty](http://www.trust.com/warranty)
- **To ensure safe handling of the device, follow the safety advice on:** [www.trust.com/safety](http://www.trust.com/safety)

The Wireless range is strongly dependent on local conditions such as the presence of HR glass and reinforced concrete. Never use Trust Smart Home products for life-support systems. This product is not water-resistant. Do not attempt to repair this product. Wire colors may vary per country. Contact an electrician when in doubt about wiring. Never connect lights or equipment that exceed the maximum load of the receiver. Exercise caution when installing a receiver voltage may be present, even when a receiver is switched off. Maximum radio transmit power: -6.41 dBm. Radio transmission frequency range: 433,92 MHz

**Disposal of packaging materials:** Dispose of packaging materials which are no longer needed in accordance with applicable local regulations.

**Disposal of the device:** The adjacent symbol of a crossed-out wheelie bin means that this device is subject to Directive 2012/19/EU.

**Disposal of batteries:** Used batteries may not be disposed of in household waste. Only dispose of batteries when they are fully discharged. Dispose of batteries according to local regulations.

Trust Electronics Ltd. declares that item number 71274/71274-02 is in compliance with Directive Electromagnetic Compatibility Regulations 2016, Radio Equipment Regulations 2017. The full text of the declaration of conformity is available at the following internet address: [www.trust.com/compliance](http://www.trust.com/compliance)

Trust International B.V. declares that item number 71274/71274-02 is in compliance with Directive 2014/53/EU – 2011/65/EU. The full text of the EU declaration of conformity is available at the following web address: [www.trust.com/compliance](http://www.trust.com/compliance)

## TECHNICAL SPECIFICATIONS Doorbell

Code system	Automatic
Memory Adresses	32
Melodies	6
Volume levels	4
Power	230VAC/50Hz
Size	HxBxL: 100 x 59 x 37 mm (excl. Plug)

### **TECHNICAL SPECIFICATIONS Transmitter**

- **Codesystem:** Automatic
- **Channels:** 1
- **Power:** 12V A23 alkaline battery (included)
- **Size:** HxBxL: 50 x 91 x 29 mm

### **Declaration of Conformity**

Trust International B.V. declares that this Trust Smart Home-product:

- **Model:** ACDB-8000BC TRANSMITTER + PLUG-IN DOORBELL
- **Item number:** 71274/71274-02
- **Intended use:** Indoor

**is in compliance with the essential requirements and other relevant provisions of the following directives:**

- ROHS 2 Directive (2011/65/EU)
- RED Directive (2014/53/EU)

The full text of the EU declaration of conformity is available at the following web address:

[www.trust.com/compliance](http://www.trust.com/compliance)

### **TRUST SMART HOME**

LAAN VAN BARCELONA 600 3317DD DORDRECHT NEDERLAND

[www.trust.com](http://www.trust.com)


### **Trust Electronics Ltd.,**

Sopwith Dr, Weybridge, KT13 0NT, UK. All brand names are registered trademarks of their respective owners. Specifications are subject to change without prior notice. Made in China.

[www.trust.com](http://www.trust.com)

### **Documents / Resources**



	<p><b><a href="#">Trust ACDB-8000BC Wireless Doorbell with Push Button Transmitter</a></b> [pdf] User Manual  ACDB-8000BC Wireless Doorbell with Push Button Transmitter, ACDB-8000BC, Wireless Door bell with Push Button Transmitter, Doorbell with Push Button Transmitter, Push Button Transmitt er, Button Transmitter, Transmitter</p>
--	--

## References

- [t. Trust.com - Contact & Support - Compliance](#)
- [t. Trust.com - Home](#)
- [t. Trust.com - Home](#)
- [t. Trust.com - Contact & Support - Compliance](#)
- [t. Trust.com - Contact & Support - Safety information](#)
- [t. Trust.com - Contact & Support - Warranty conditions](#)