



Trust ACDB-8000AC Wireless Doorbell Kit with Plugin Chime Instruction Manual

[Home](#) » [Trust](#) » Trust ACDB-8000AC Wireless Doorbell Kit with Plugin Chime Instruction Manual 

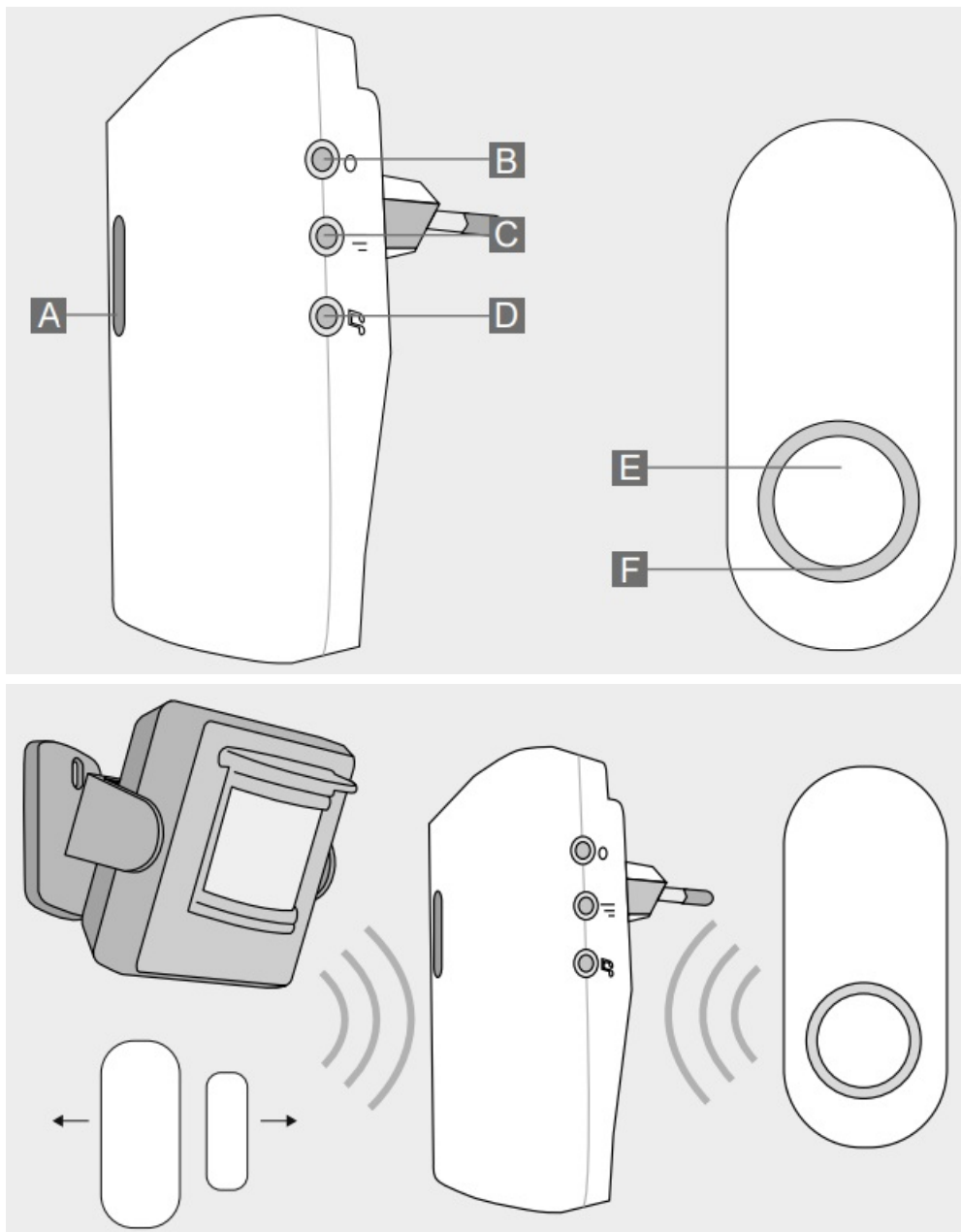
Trust ACDB-8000AC Wireless Doorbell Kit with Plugin Chime



Contents

- 1 Description
- 2 1. Remove battery strip from push button
- 3 2. Placing the Receiver
- 4 3. Selecting the desired volume
- 5 4. Selecting the desired melody
- 6 5A. Connecting transmitter(s) to the doorbell
- 7 6A. Securing push button with double-sided tape
- 8 6B. Securing push button with screws
- 9 Safety Instructions
- 10 Declaration of Conformity
- 11 TECHNICAL SPECIFICATIONS Doorbell
- 12 TECHNICAL SPECIFICATIONS Push button
- 13 Documents / Resources
 - 13.1 References
- 14 Related Posts

Description



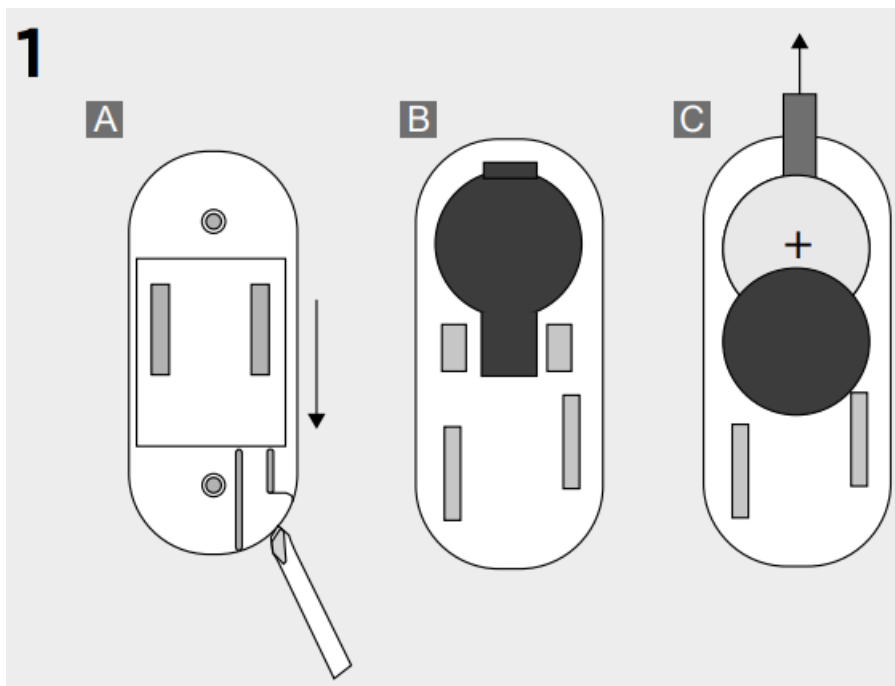
- A LED indicator doorbell
- B Connect button
- C Volume button
- D Melody selection
- E LED indicator push button
- F Push button

Wireless control

The wireless doorbell can be operated wirelessly with a minimum of 1 and a maximum of 32 Trust Smart Home transmitters of your choice. For example, you can play a desired melody using the supplied push button.

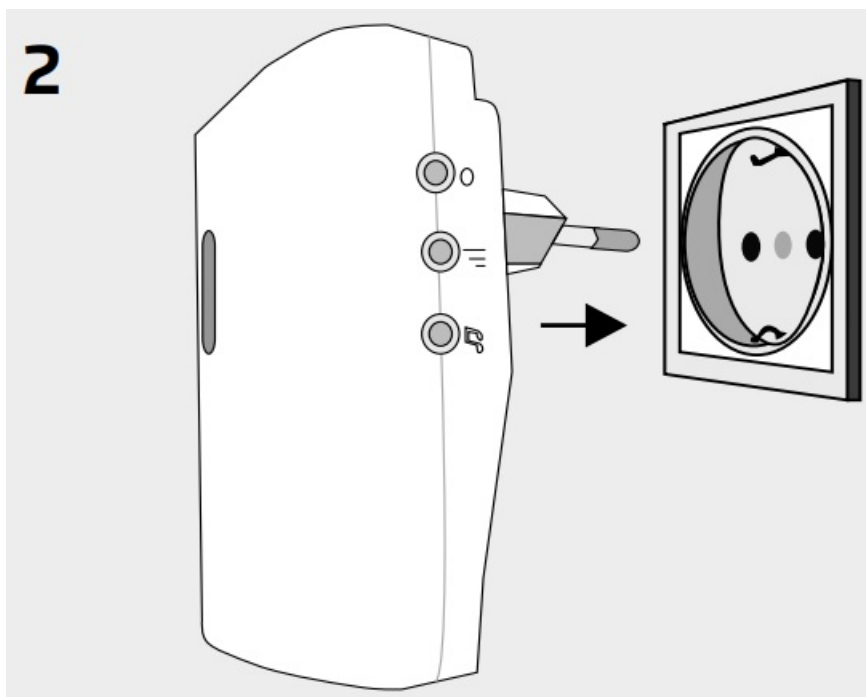
In addition, you can also play a melody when movement is detected and / or when a window or door is opened. For each Trust Smart Home transmitter you can set a separate melody to hear exactly whether someone presses the push button or if a door or window is opened.

1. Remove battery strip from push button



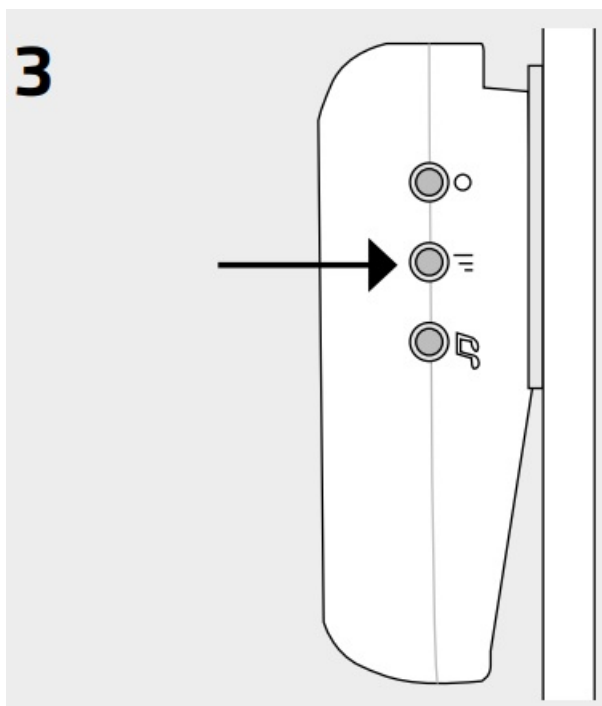
- A Insert a flat screwdriver into the notch at the bottom of the push button and slide the push button off the back plate.
- B Open the waterproof rubber by flipping it to reveal the battery.
- C Remove the plastic battery strip.
- D Close the waterproof rubber and place the push button back on the back plate.

2. Placing the Receiver



Place the doorbell in an indoor electrical outlet. If you move the doorbell to another outlet, the connected transmitters will remain in the memory

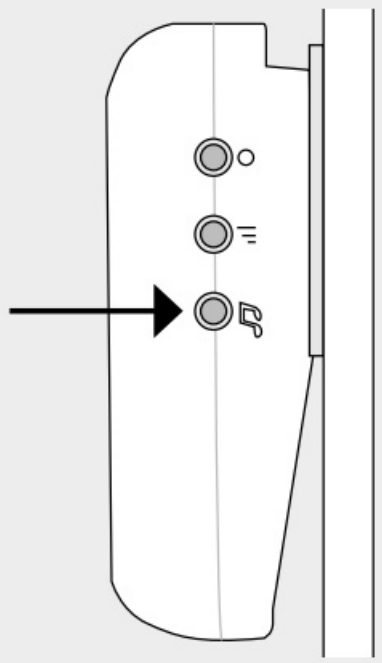
3. Selecting the desired volume



First press the volume button to set the desired volume level. There are 4 levels: High, Medium, Low and Off (LED indication only).

4. Selecting the desired melody

4

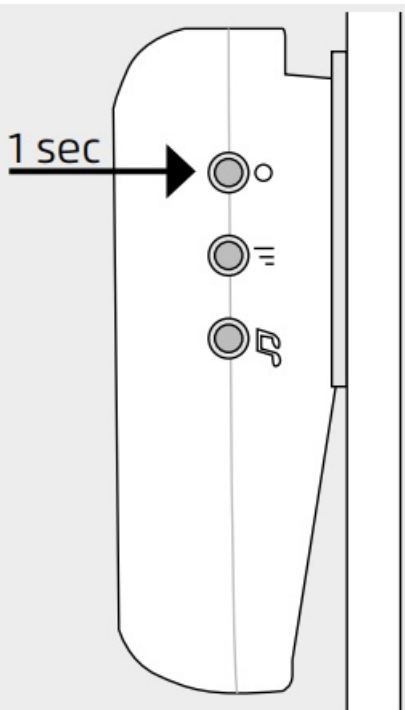


Press the melody button to select 1 of the 6 melodies.

You can set a separate melody for each transmitter (push button, motion detector, door/window sensor) by selecting it in advance.

5A. Connecting transmitter(s) to the doorbell

5a



Press the connect button for 1 second to activate the learning mode.

The learning mode will be active for 10 seconds and the LED indicator on the doorbell will flash slowly.

5B

5b

ON



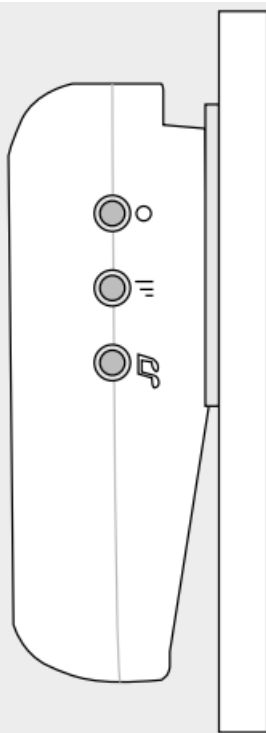
While the LED indicator is flashing, send an ON signal with a Trust Smart Home transmitter to pair it to the doorbell.

5C

5c



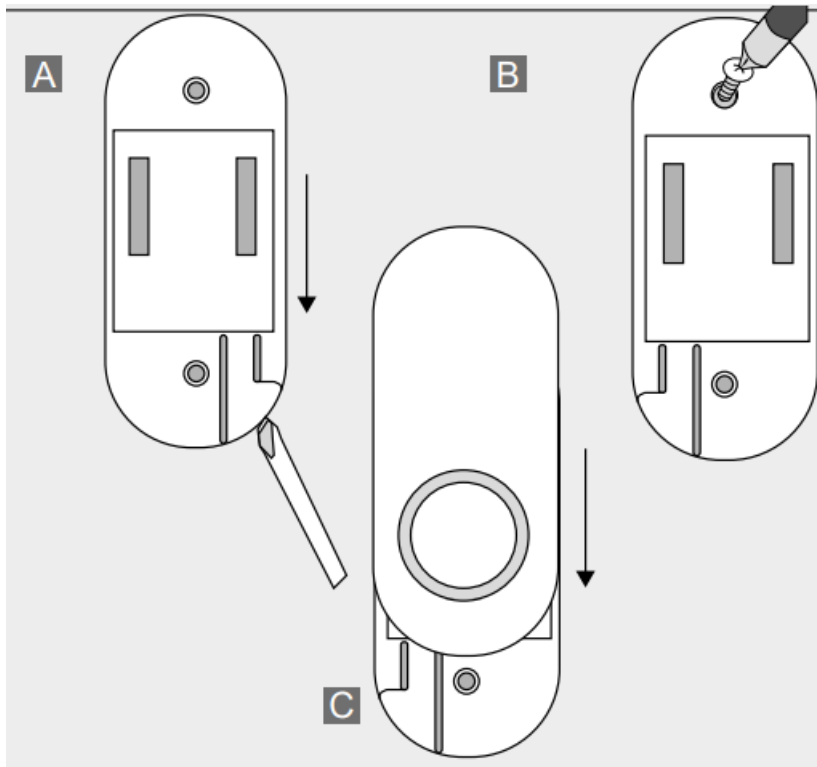
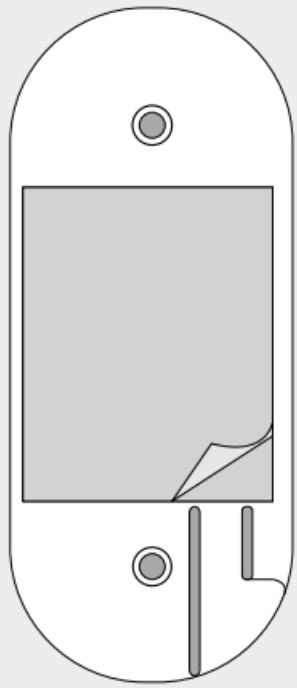
2 short beeps



As soon as the transmitter is paired, the wireless doorbell will give 2 short beeps. The transmitter, melody and volume are now paired. The wireless doorbell is now ready for use. The receiver can store 32 different transmitters in its memory. If you want to pair several transmitters, repeat steps 2 to 5c.

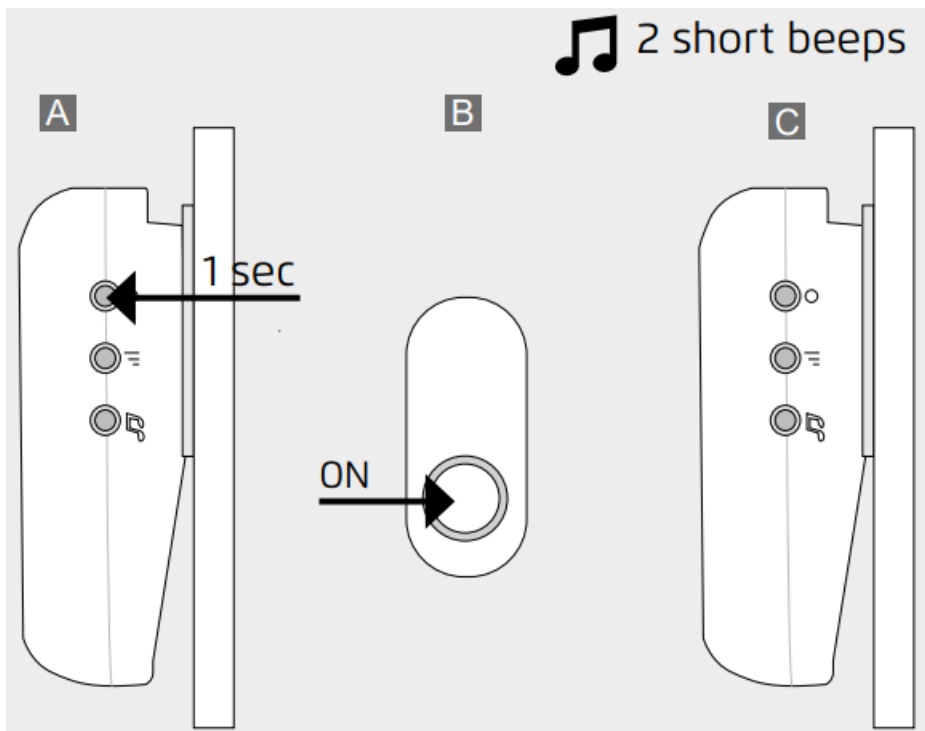
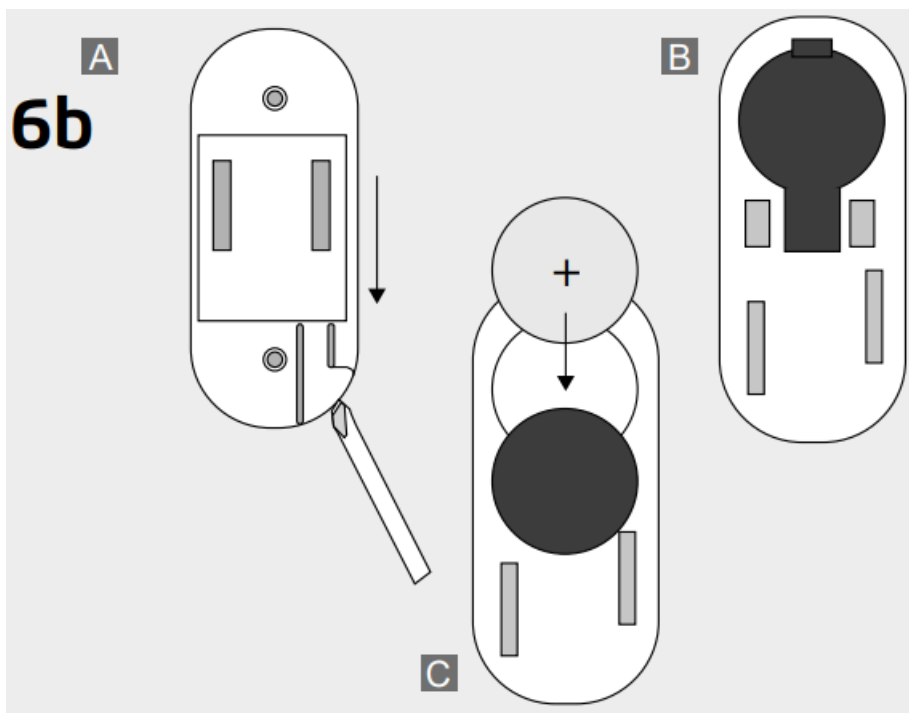
6A. Securing push button with double-sided tape

6a



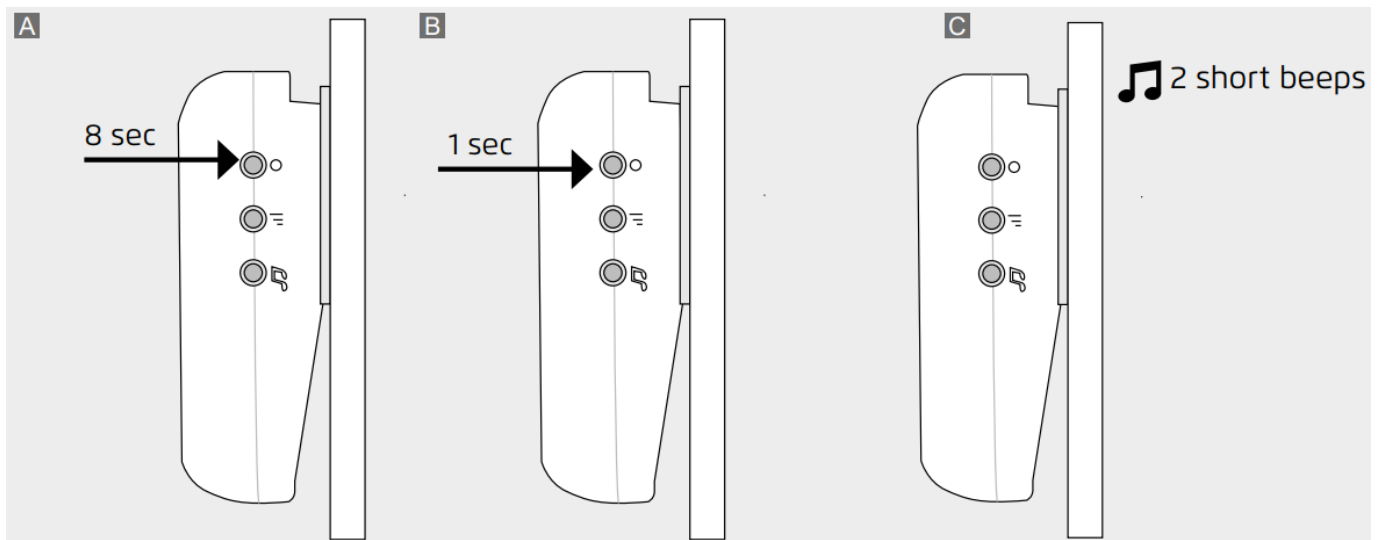
Determine where to place the push button and attach the push button with the supplied double-sided tape.

6B. Securing push button with screws



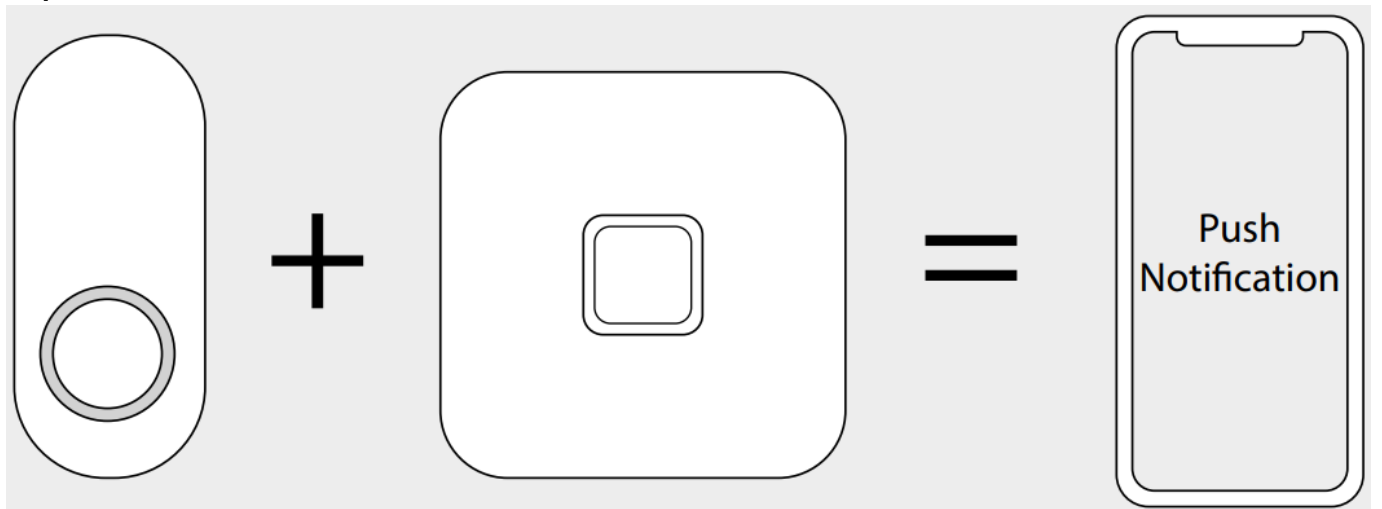
- A Insert a flathead screwdriver into the notch on the bottom of the push button and slide the push button off the back plate
- B Determine where the push button will be placed and secure the back plate with the supplied screws.
- C Place the push button back on the back plate by sliding it from top to bottom.

Changing the battery of the push button



- A When the battery is low, the LED will light up for 2 sec and then blink 3 times after pressing the push button. Insert a flat screwdriver into the notch on the bottom of the push-button and slide the push-button off the back plate.
- B Open the waterproof rubber to reveal the battery
- C Remove the old battery and insert a new CR2032 battery into the recess of the battery holder. Make sure the + is pointing upwards.
- C Close the waterproof rubber and place the push button back on the back plate.

Unpair a Trust Smart Home transmitter



- A Press the connect button for 1 second. The learning mode will be active for 10 seconds and the LED indicator on the receiver will blink slowly.
- B While the learning mode is active, send an ON signal with the channel of the paired Trust Smart Home transmitter you want to disconnect
- C To confirm, the wireless doorbell will give 2 short beeps.

Erasing the entire memory

- A Press the connect button (8 seconds) until the LED indicator starts flashing rapidly. The erase mode will be active for 10 seconds and the LED indicator on the receiver will flash rapidly.

- B While the delete mode is active, press the learn button again for 1 second to confirm that you want to delete the memory completely.
- C To confirm, the wireless doorbell give 2 short beeps

Combine the push button with the ICS-2000/ Smart Bridge

Combine the push button with the ICS-2000/Smart Bridge and also receive a push notification on your smartphone when the doorbell rings.

For example, you can turn the wireless plug-in doorbell off at night and only receive a push notification when the push button is pressed.

Safety Instructions

Product support: www.trust.com/71273. Warranty conditions: www.trust.com/warranty

To ensure safe handling of the device, follow the safety advice on: www.trust.com/safety

The Wireless range is strongly dependent on local conditions such as the presence of HR glass and reinforced concrete

Never use Trust Smart Home products for life-support systems. Do not attempt to repair this product. Wire colors may vary per country. Contact an electrician when in doubt about wiring. Never connect lights or equipment that exceed the maximum load of the receiver. Exercise caution when installing a receiver voltage may be present, even when a receiver is switched off. Maximum radio transmit power: 7.21 dBm. Radio transmission frequency range: 433,92 MHz



Disposal of packaging materials – Dispose of packaging materials which are no longer needed in accordance with applicable local regulations.



Disposal of the device – The adjacent symbol of a crossed-out wheeled bin means that this device is subject to Directive 2012/19/EU.



Disposal of batteries – Used batteries may not be disposed of in household waste. Only dispose of batteries when they are fully discharged. Dispose of batteries according to local regulations.



Trust Electronics Ltd. declares that item number 71273/71273-02 is in compliance with Directive Electromagnetic Compatibility Regulations 2016, Radio Equipment Regulations 2017. The full text of the declaration of conformity is available at the following internet address: www.trust.com/compliance



Trust International B.V. declares that item number 71273/71273-02 is in compliance with Directive 2014/53/EU – 2011/65/EU. The full text of the EU declaration of conformity is available at the following web address: www.trust.com/compliance

Declaration of Conformity

Trust International B.V. declares that this Trust Smart Home-product:

Model: ACDB-8000AC Plug-in wireless doorbell set

Item number: 71273/71273-02

Intended use: Indoor

is in compliance with the essential requirements and other relevant provisions of the following directives:

ROHS 2 Directive (2011/65/EU)

RED Directive (2014/53/EU)

The full text of the EU declaration of conformity is available at the following web address:

TRUST SMART HOME

LAAN VAN BARCELONA 600

3317DD DORDRECHT

NEDERLAND

www.trust.com

Trust Electronics Ltd.,

Sopwith Dr, Weybridge, KT13 0NT, UK.

All brand names are registered trademarks of their respective owners.

Specifications are subject to change without prior notice. Made in China.

TECHNICAL SPECIFICATIONS Doorbell


Codesystem	Automatic
Memory Adresses	32
Melodies	6
Volume levels	4
Power	230VAC/50Hz
Size	HxBxL: 100 x 59 x 37 mm (excl. Plug)

TECHNICAL SPECIFICATIONS Push button

Codesystem	Automatic
IP Rating	IP55
Power	3V lithium battery type CR2032 (included)
Size	HxBxL: 70 x 30 x 15.5 mm

Trust.

Documents / Resources

 <p>Trust. ACDB-8000AC WIRELESS DOORBELL KIT WITH PLUGIN CHIME</p>	<p>Trust ACDB-8000AC Wireless Doorbell Kit with Plugin Chime [pdf] Instruction Manual ACDB-8000AC Wireless Doorbell Kit with Plugin Chime, ACDB-8000AC, Wireless Doorbell Kit with Plugin Chime, Doorbell Kit with Plugin Chime, Plugin Chime</p>
---	---

References

- [!\[\]\(effbd7993c63c039a58fd3395789cf3f_img.jpg\) Trust.com - Contact & Support - Compliance](#)
- [!\[\]\(144980d038f2541d7b588a8a9132bd70_img.jpg\) Trust.com - Home](#)
- [!\[\]\(c4ce2d477989700c971cf3d240ad9283_img.jpg\) Trust.com - Home](#)
- [!\[\]\(5013555a72072875cb154b597e002a46_img.jpg\) Trust.com - Contact & Support - Compliance](#)
- [!\[\]\(bf2038c114ec21ea58ad011774351c98_img.jpg\) Trust.com - Contact & Support - Safety information](#)
- [!\[\]\(1ad0c3425edfa4762c2f20e33e3e5bbf_img.jpg\) Trust.com - Contact & Support - Warranty conditions](#)

Manuals+.