



Trust 71231 Wireless Door-Window Sensor User Manual

[Home](#) » [Trust](#) » Trust 71231 Wireless Door-Window Sensor User Manual 

Contents

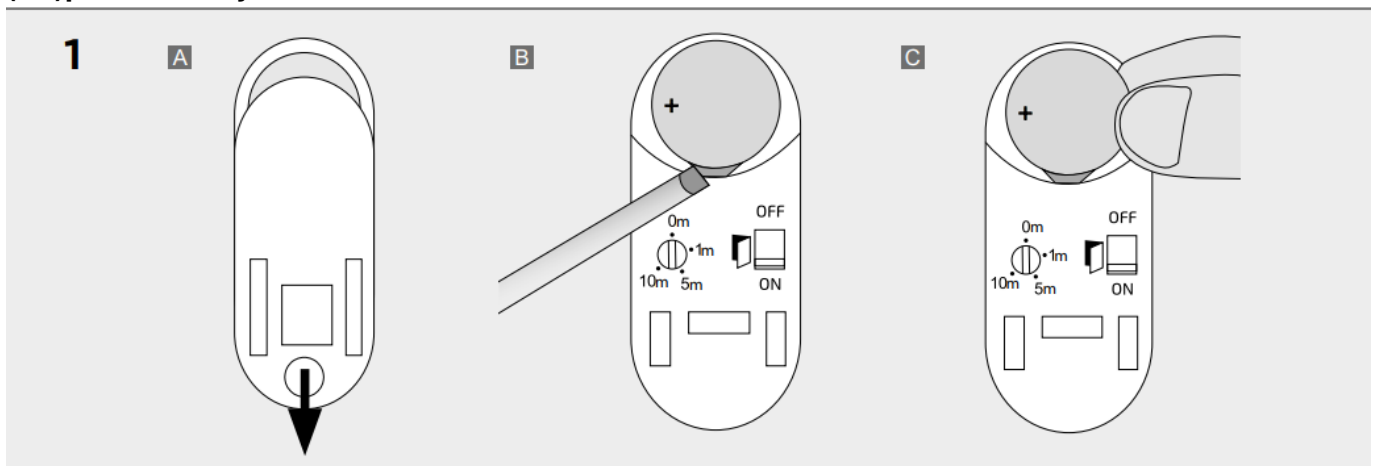
- [1 Trust 71231 Wireless Door-Window Sensor](#)
- [2 \(Re\)place battery](#)
- [3 Set sensor operation](#)
- [4 Safety Instructions](#)
- [5 TECHNICAL SPECIFICATIONS](#)
- [6 Documents / Resources](#)
 - [6.1 References](#)
- [7 Related Posts](#)

Trust.

Trust 71231 Wireless Door-Window Sensor

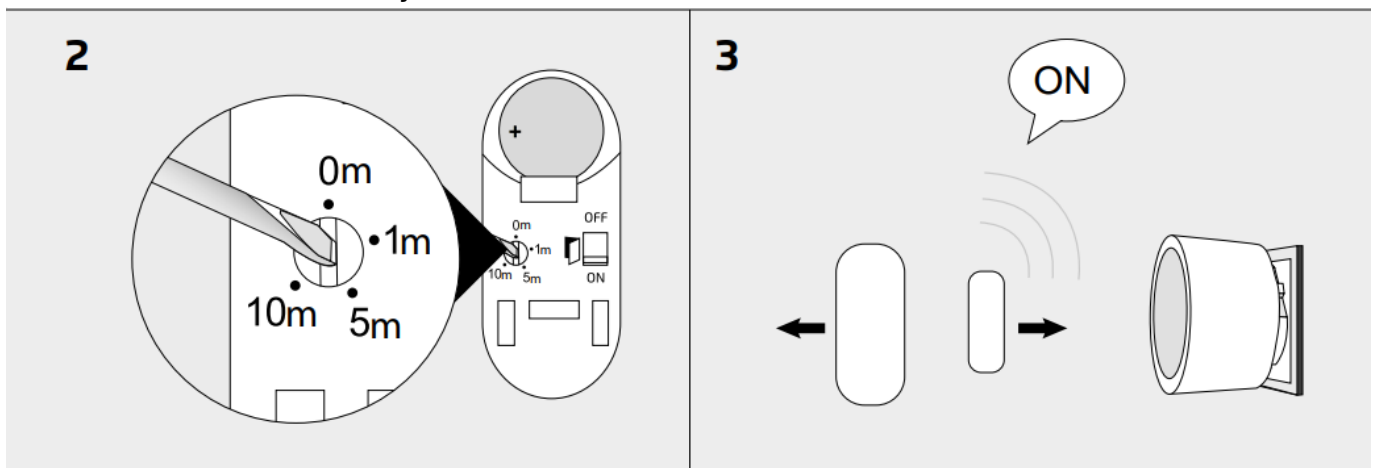


(Re)place battery



- **A** Open the battery compartment by sliding the backplate from the sensor.
- **B** Optional: Remove the old battery with a flathead screwdriver .
- **C** Place the (included) 3V CR1632 lithium battery

Set the desired switch-off delay



Turn the switch-off delay to the desired position using a flathead screwdriver. The switch-off delay can be changed after the sensor is paired to a Trust Smart Home receiver.

0m: The OFF-signal is sent directly when the sensor is closed.

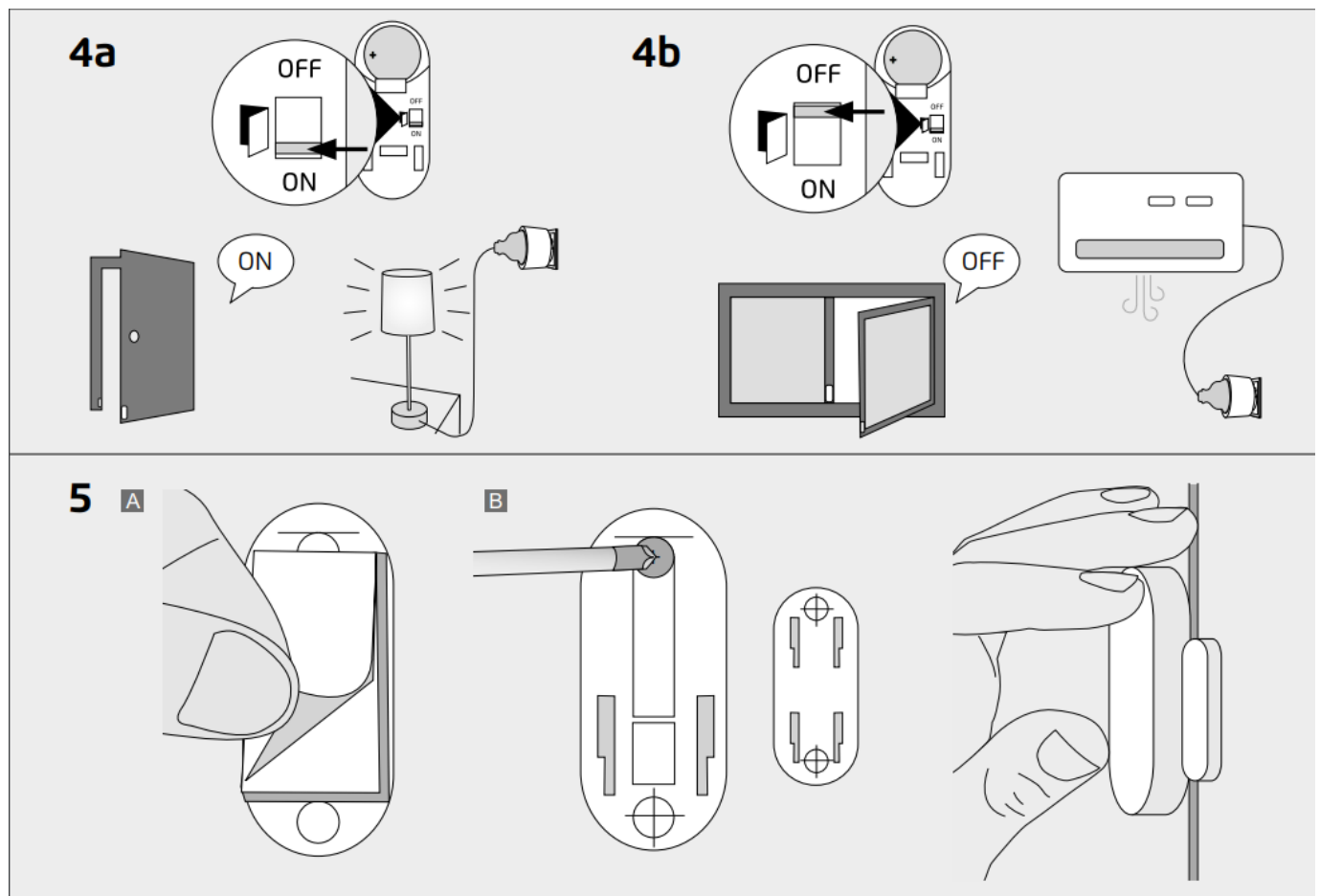
1m, 5m, 10m: The OFF-signal is automatically sent after 1, 5, 10 minutes, regardless whether the door/window is open or closed.

Place the backplate on the sensor.

Pair sensor to receiver

Before pairing the sensor to a receiver make sure the sensor is closed (place both parts against each other). To put the ACC-2300 (wireless socket in picture) in learn mode, plug it into a wall socket. (For other receivers refer to their manual). While the learn mode is active, open the sensor (more than 3 cm) to pair it to the receiver.

Set sensor operation



The operation of the sensor when it is opened can be changed by setting the switch to ON or OFF on the back of the sensor.

4a. ON: When the switch on the sensor is set to ON, it will send an ON signal when for example a door is opened to turn a lamp on and an OFF signal when the door is closed to turn the lamp off.

4b. OFF: When the switch on the sensor is set to OFF, it will send an OFF signal when for example a window is opened to turn the ventilation off and an ON signal when the window is closed to turn the ventilation on.

Mount sensor

- **A** To mount the sensor using supplied double sided tape, apply the double sided tape on the back of both parts of the sensor and place them onto a window or door frame. The gap between the parts should be as small as possible (max. 1 cm).

- **B** To mount the sensor using the supplied self-tapping screws, first open the sensor by sliding off the backplate (of both parts) and screw (through the indicated screw locations as shown in the picture) the backplates on a window or door frame. The gap between the parts should be as small as possible (max. 1 cm). Place the sensor on the backplates.

Safety Instructions

Product support: www.trust.com/71231. Warranty conditions: www.trust.com/warranty

To ensure safe handling of the device, follow the safety advice on: www.trust.com/safety

The Wireless range is strongly dependent on local conditions such as the presence of HR glass and reinforced concrete. Never use Trust Smart Home products for life-support systems. This product is not water-resistant. Do not attempt to repair this product. Wire colors may vary per country. Contact an electrician when in doubt about wiring. Never connect lights or equipment that exceed the maximum load of the receiver. Exercise caution when installing a receiver voltage may be present, even when a receiver is switched off. Maximum radio transmit power: -12.39 dBm. Radio transmission frequency range: 433,92 MHz

Disposal of packaging materials – Dispose of packaging materials which are no longer needed in accordance with applicable local regulations.


- Disposal of the device – The adjacent symbol of a crossed-out wheellie bin means that this device is subject to Directive 2012/19/EU.
- Disposal of batteries – Used batteries may not be disposed of in household waste. Only dispose of batteries when they are fully discharged. Dispose of batteries according to local regulations.
- Trust Electronics Ltd. declares that item number 71231/71231-02 is in compliance with Directive Electromagnetic Compatibility Regulations 2016, Radio Equipment
- Regulations 2017. The full text of the declaration of conformity is available at the following internet address: www.trust.com/compliance
- Trust International B.V. declares that item number 71231/71231-02 is in compliance with Directive 2014/53/EU – 2011/65/EU. The full text of the EU declaration of conformity is available at the following web address: www.trust.com/compliance

TECHNICAL SPECIFICATIONS

Codesystem	Automatic
Size	HxWxL: 45.8 x 20 x 12 mm and 32 x 12 x 11.5mm
Power	3V lithium battery type CR1632 (included)

www.trust.com

Documents / Resources

	<p>Trust 71231 Wireless Door-Window Sensor [pdf] User Manual</p> <p>71231 Wireless Door-Window Sensor, 71231, Wireless Door-Window Sensor, Door-Window Sensor, Window Sensor, Sensor</p>
---	---

References

- [!\[\]\(3da2b303d29c1ea489bbe26a3f5ac664_img.jpg\) Trust.com - Contact & Support - Compliance](#)
- [!\[\]\(9421cea5a5b5319f79b58962509475ab_img.jpg\) Trust.com - Home](#)
- [!\[\]\(17cce402a0380c36f25e02ecf91578f5_img.jpg\) Trust.com - Home](#)
- [!\[\]\(1086da34995924f924c8e8e23387d139_img.jpg\) Trust.com - Wireless Door/Windows Sensor ACST-606](#)
- [!\[\]\(ffa6dd4cd8800071ccc1a355540c540c_img.jpg\) Trust.com - Contact & Support - Compliance](#)
- [!\[\]\(dfba61b58454dd961d978e324a1fb5e5_img.jpg\) Trust.com - Contact & Support - Safety information](#)
- [!\[\]\(9580d03b8c5bd7e23dc602a02886460d_img.jpg\) Trust.com - Contact & Support - Warranty conditions](#)