



## Trust 71182 Compact Wireless Socket Switch Set User Manual

[Home](#) » [Trust](#) » Trust 71182 Compact Wireless Socket Switch Set User Manual 

# Trust.

START-LINE SET APC



**SWITCH-IN**

**USER MANUAL  
MULTI-LANGUAGE**



### **Item 71182/71211 Version 1.0**

Always read the instructions before using this product

#### **Contents**

- [1 STARTER SET WIRELESS SWITCHING](#)
- [2 Safety Instructions](#)
- [3 TECHNICAL SPECIFICATIONS TRANSMITTER](#)
- [4 TECHNICAL SPECIFICATIONS RECEIVER](#)
- [5 Documents / Resources](#)
  - [5.1 References](#)
- [6 Related Posts](#)

## **STARTER SET WIRELESS SWITCHING**

### **1. Place the socket switch**

A Plug the socket switch into a power socket.

B The socket switch will activate the pairing mode for 6 seconds.

### **2. Pair the socket switch with a transmitter**

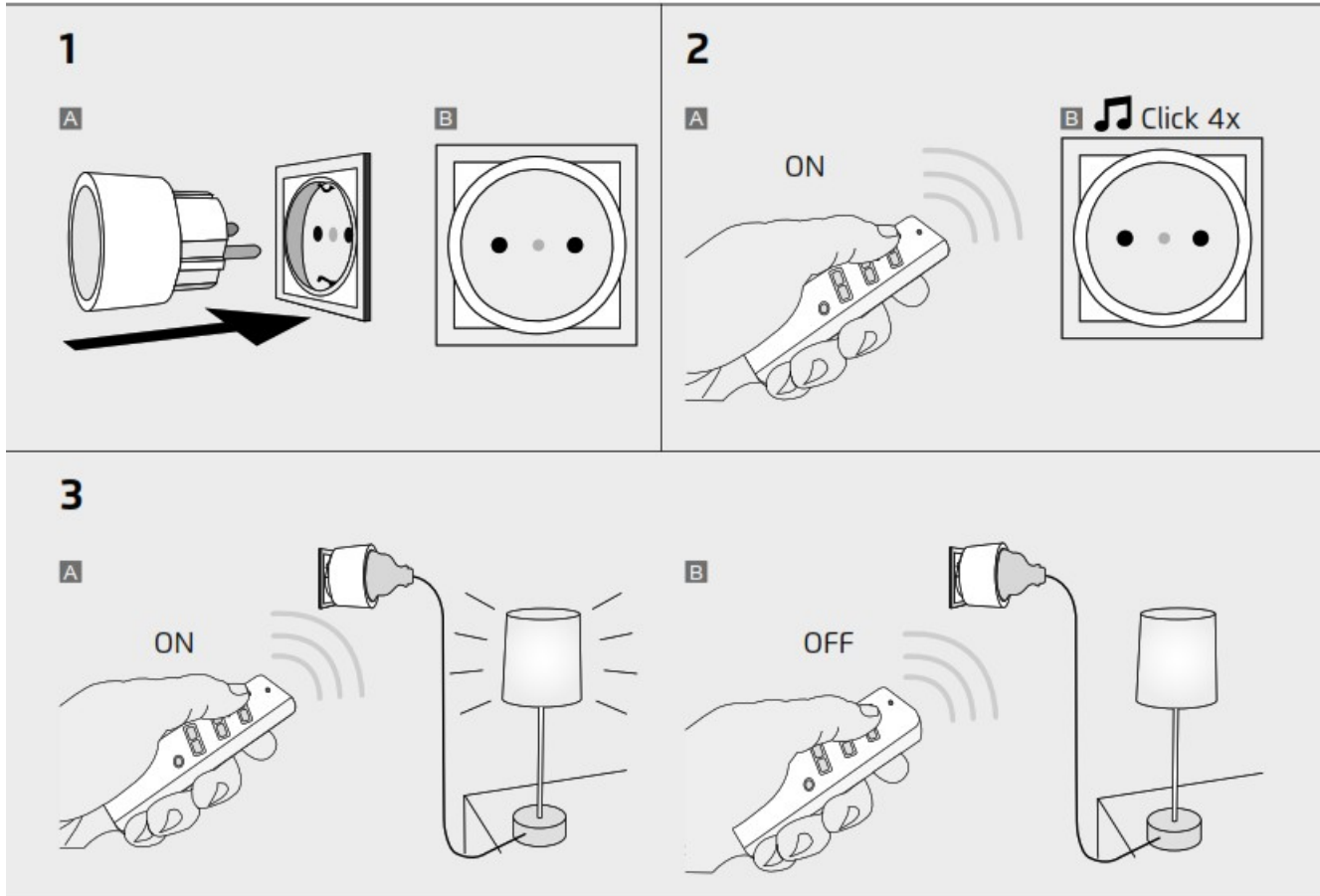
A After plugging in the socket switch, send an ON-signal with a channel on a Trust Smart Home transmitter while the pairing mode is active.

B The socket switch will make a clicking sound 4 times to confirm the pairing has succeeded. The socket switch can store up to 32 different transmitters in its memory. The paired transmitters will be remembered when the socket switch is moved to another power socket.

### 3. Operating the socket switch

A Connect the device you want to control with the socket switch and press the ON button with the assigned channel on the paired transmitter to turn the socket switch/device on. Do not exceed the maximum load: 2300W.

B Press the OFF button with the assigned channel on the paired transmitter to turn the socket switch/device off.



#### Optional: Unpair the socket switch from a transmitter

A Disconnect any connected device and remove the socket switch from the power socket.

B Plug the socket switch back in the power socket. The pairing mode will be activated for 6 seconds.

C While the pairing mode is active, send an OFF signal with the assigned channel on the paired transmitter to unpair it.

D The socket switch will make a clicking sound 4 times.

#### Optional: Clear the memory of the socket switch

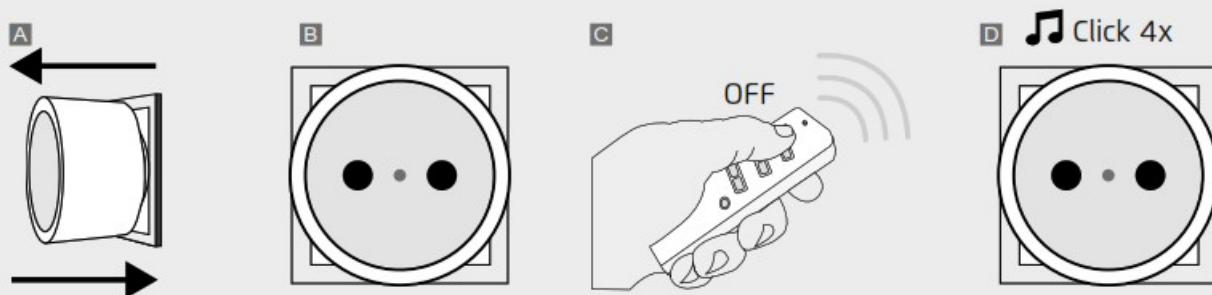
A Disconnect any connected device and remove the socket switch from the power socket.

B Plug the socket switch back in the power socket. The pairing mode will be activated for 6 seconds.

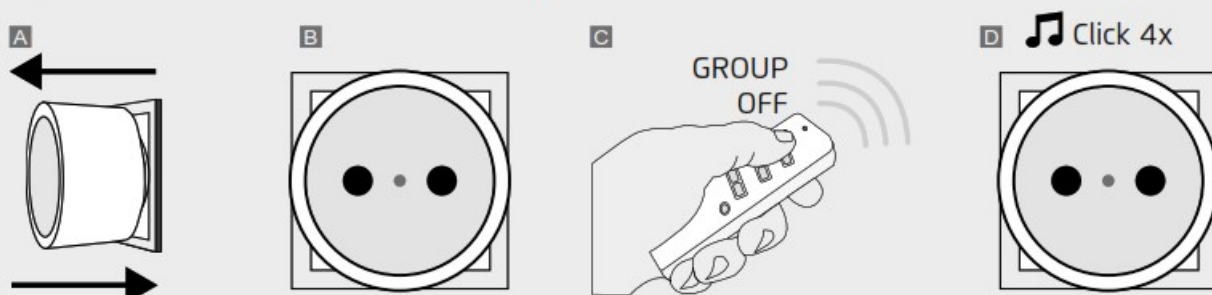
C While the pairing mode is active, send a GROUP-OFF signal with a transmitter to clear the memory.

D The socket switch will make a clicking sound 4 times to confirm the memory is cleared.

## Optional: Unpair the socket switch from a transmitter



## Optional: Clear the memory of the socket switch

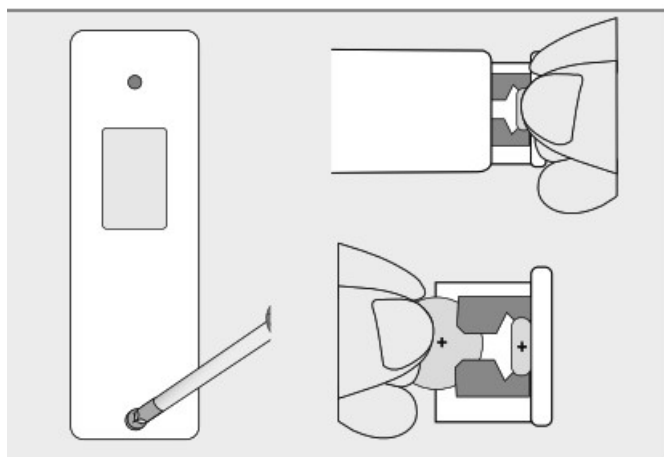


## Replace transmitter battery

A Open the battery compartment.

B Place a new 3V CR2032 lithium battery. The polarity should match the symbols on the holder.

C Close the battery compartment.



## Safety Instructions

Product support: [www.trust.com/71182](http://www.trust.com/71182). Warranty conditions: [www.trust.com/warranty](http://www.trust.com/warranty)

To ensure safe handling of the device, follow the safety advice on: [www.trust.com/safety](http://www.trust.com/safety)

The Wireless range is strongly dependent on local conditions such as the presence of HR glass and reinforced concrete. Never use Trust Smart Home products for life-support systems. This product is not water-resistant. Do not attempt to repair this product. Wire colors may vary per country. Contact an electrician when in doubt about wiring. Never connect lights or equipment that exceed the maximum load of the receiver. Exercise caution when installing a receiver; voltage may be present, even when a receiver is switched off. Maximum radio transmit power: -9.83 dBm. Radio transmission frequency range: 433,92 MHz.



Disposal of packaging materials – Dispose of packaging materials which are no longer needed in accordance with applicable local regulations.



Disposal of the device – The adjacent symbol of a crossed-out wheeled bin means that this device is subject to Directive 2012/19/EU.



Disposal of batteries – Used batteries may not be disposed of in household waste. Only dispose of batteries when they are fully discharged. Dispose of batteries according to local regulations.



Trust Electronics Ltd. declares that item number 71182/71182-02 and 71211/71211-02 is in compliance with Directive Electromagnetic Compatibility Regulations 2016, Radio Equipment Regulations 2017. The full text of the declaration of conformity is available at the following internet address: [www.trust.com/compliance](http://www.trust.com/compliance)



Trust International B.V. declares that item number 71182/71182-02 and 71211/71211-02 is in compliance with Directive 2014/53/EU – 2011/65/EU. The full text of the EU declaration of conformity is available at the following web address: [www.trust.com](http://www.trust.com)



### Declaration of Conformity

Trust International B.V. declares that this Trust Smart Home-product:

Model:	APC Starter Set Wireless Switching
Item number:	71182/71182-02/71211/71211-02
Intended use:	Indoor

is in compliance with the essential requirements and other relevant provisions of the following directives:

ROHS 2 Directive (2011/65/EU)

RED Directive (2014/53/EU)

The full text of the EU declaration of conformity is available at the following web address:

[www.trust.com/compliance](http://www.trust.com/compliance)

### TRUST SMART HOME

LAAN VAN BARCELONA 600 3317DD DORDRECHT NEDERLAND

[www.trust.com](http://www.trust.com)

### Trust Electronics Ltd.,

Sopwith Dr, Weybridge, KT13 0NT, UK. All brand names are registered trademarks of their respective owners. Specifications are subject to change without prior notice. Made in China.

### TECHNICAL SPECIFICATIONS TRANSMITTER


Codesystem	Automatic
Number of Channels	3 + All-Off
Size	HxWxL: 110 x 30 x 16 mm
Power	3V lithium battery type CR2032 (included)

## TECHNICAL SPECIFICATIONS RECEIVER

Code system	Automatic
Memory adresses	32
Size	HxWxL: 70 x 48 x 48 mm
Power	230V/50Hz
Maximum load	2300 Watt

[www.trust.com](http://www.trust.com)

## Documents / Resources

	<p><a href="#">Trust 71182 Compact Wireless Socket Switch Set</a> [pdf] User Manual 71182, 71211, Compact Wireless Socket Switch Set, Socket Switch Set, Compact Wireless Switch Set, Switch Set, Wireless Switch Set, Switch</p>
---	---

## References

- [Trust.com - Contact & Support - Compliance](#)
- [Trust.com - Home](#)
- [Trust.com - Home](#)
- [Trust.com - Compact Wireless Socket Switch Set APC3-2300R](#)
- [Trust.com - Contact & Support - Compliance](#)
- [Trust.com - Contact & Support - Safety information](#)
- [Trust.com - Contact & Support - Warranty conditions](#)