



Trust 71090 Timer Remote Control User Manual

[Home](#) » [Trust](#) » Trust 71090 Timer Remote Control User Manual 

Contents

- 1 Trust 71090 Timer Remote Control
- 2 LCD screen layout
- 3 Control 1 Trust Smart Home receiver per unit
- 4 Manual operation of a Trust Smart Home on/off the receiver
- 5 Set clock time
- 6 Program a timer setting
- 7 Enable or disable Child Protection
- 8 Safety Instructions
- 9 Declaration of Conformity
- 10 TECHNICAL SPECIFICATIONS
- 11 Documents / Resources
 - 11.1 References
- 12 Related Posts

Trust.

Trust 71090 Timer Remote Control



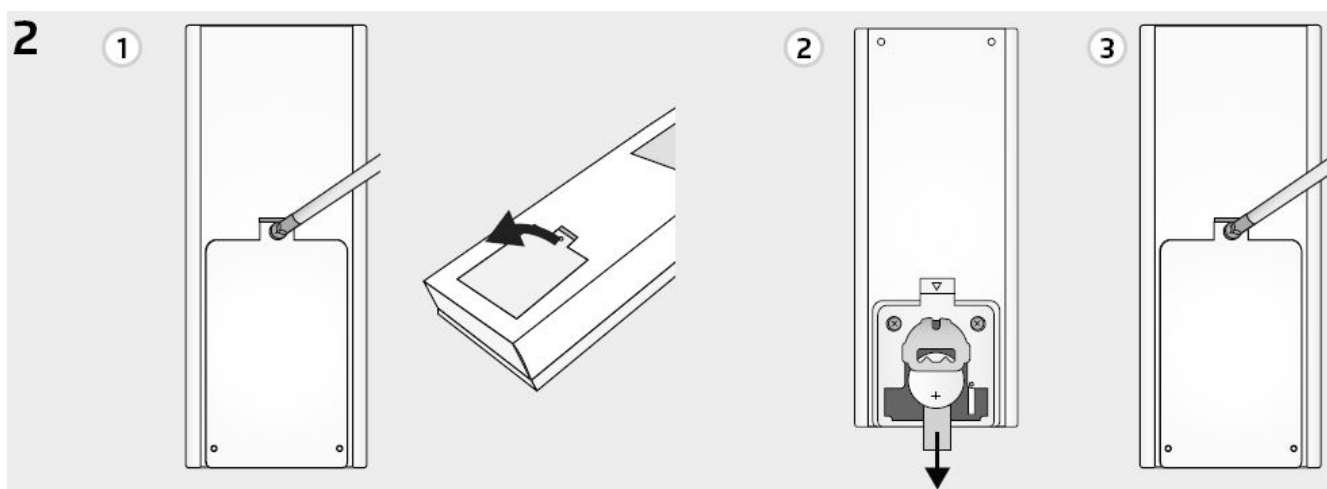
LCD screen layout

1. Timer program
2. Clock
3. Unit selection
4. Low-battery indicator
5. Repeat daily



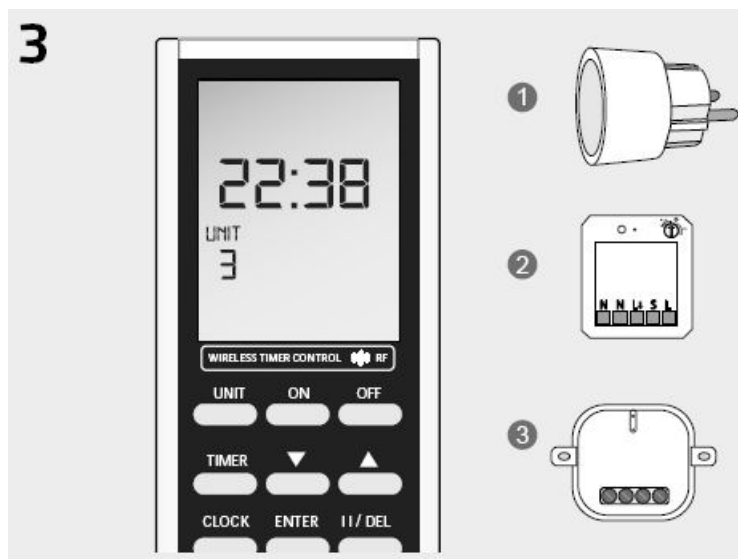
Remove pull strip

1. Open the battery compartment by screwing it open.
2. Remove the battery pull strip
3. Close the battery compartment.



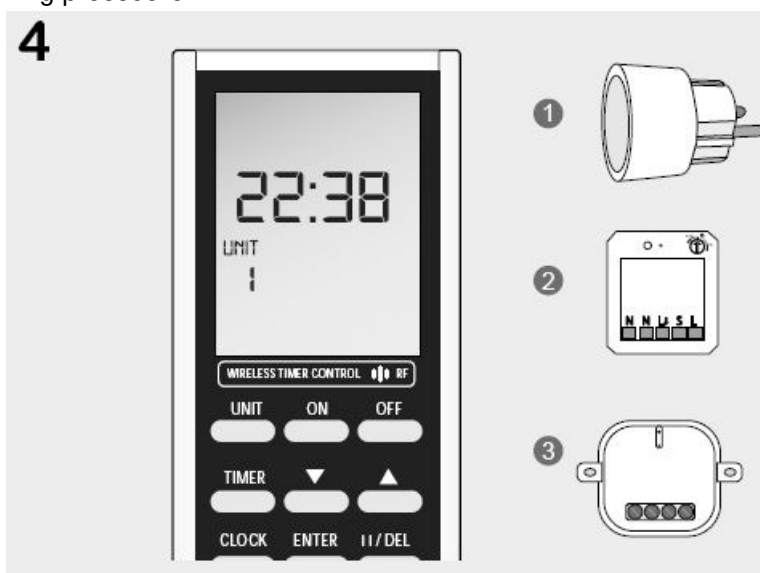
Control 1 Trust Smart Home receiver per unit

To control receivers individually, assign each receiver to a separate unit (1 to 16). Read the receiver's manual for the code-learning procedure.



Control multiple Trust Smart Home receivers per unit

To control several receivers simultaneously, assign several receivers to 1 unit (1 to 16). Read the receiver's manual for the code-learning procedure.



Manual operation of a Trust Smart Home on/off the receiver

1. Press [▼] and [▲] to select a UNIT.
2. Press ON to switch the receiver on.
3. Press OFF to switch the receiver off.

Manual operation of a Trust Smart Home dimmer receiver

1. Press [▼] and [▲] to select a UNIT.
2. Press ON once to switch the receiver on.
3. Press ON again to activate the dim mode. The light will slowly dim up and down.
4. Press ON a third time to set the desired light intensity.
5. Press OFF to switch the receiver off.

Manual operation of a Trust Smart Home electric screens receiver

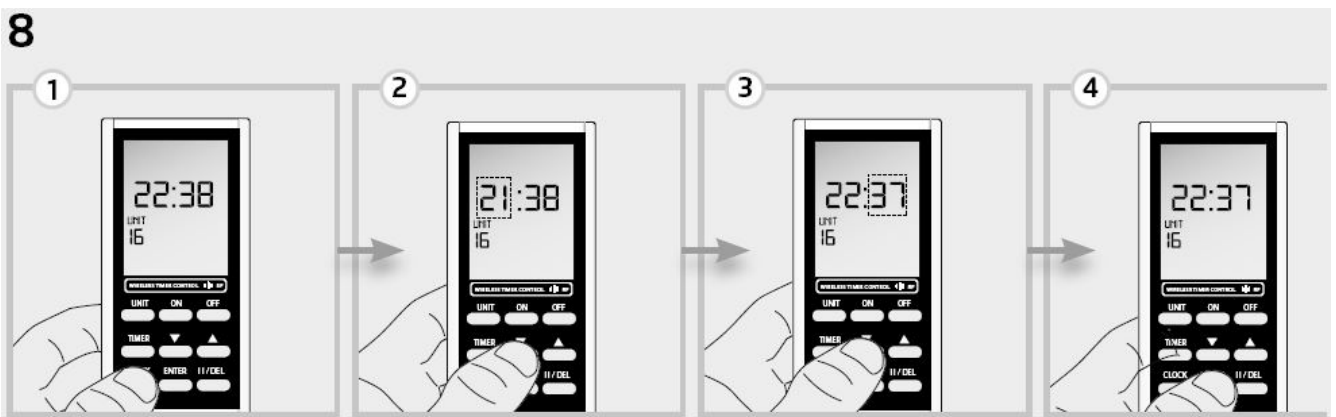
1. Press [▼] and [▲] to select a UNIT.
2. Send an ON-signal to raise the screen.
3. Send an ON-signal again to stop.
4. Send an OFF signal to lower the screen.
5. Send an OFF signal again to stop.

Read the receiver's manual to reverse the direction of the screen, if needed.



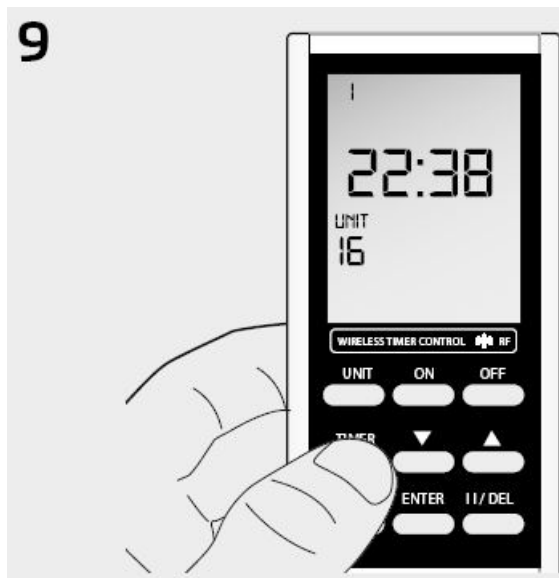
Set clock time

1. Press [CLOCK] for 3 seconds until the time indicator begins to flash.
2. Press [▼] and [▲] to change the hour.
Press [ENTER].
3. Press [▼] and [▲] to change the minute.
4. Press [ENTER] to confirm the clock time setting.



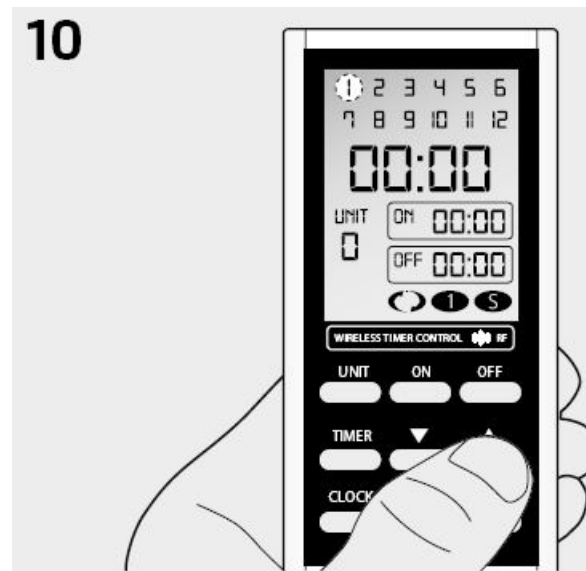
Program a timer setting

Press [TIMER] for 3 seconds until the program screen appears.



Select memory address (1-12)

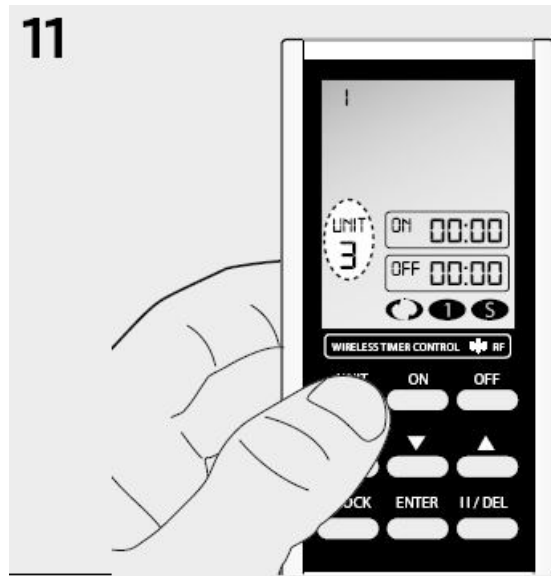
1. Press [▼] or [▲] to select a memory address.
2. Press [ENTER] to confirm.



Select a UNIT (1-16)

1. Press [▼] or [▲] to select a UNIT.
2. Press [ENTER] to confirm.

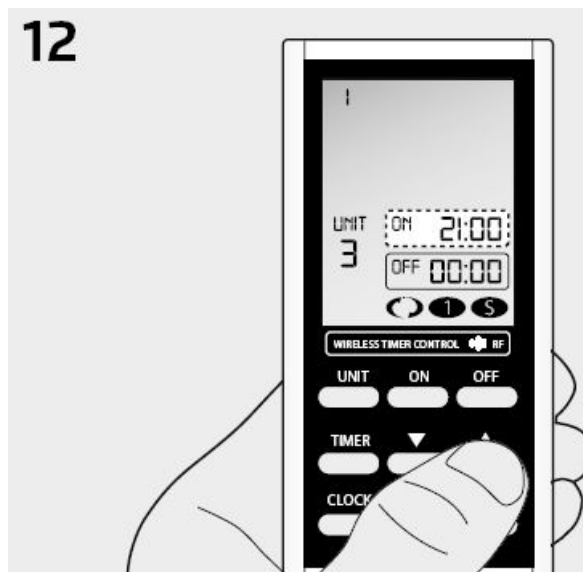
11



Program ON-time

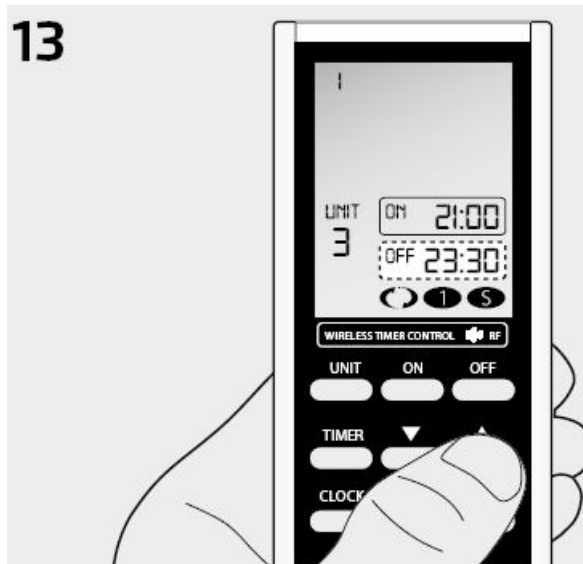
1. Press [▼] or [▲] to change the hour.
2. Press [ENTER].
3. Press [▼] or [▲] to change the minute.
4. Press [ENTER] to confirm.

12



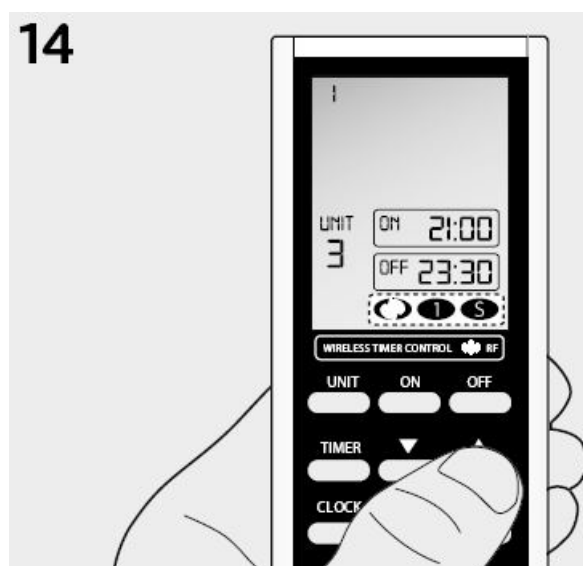
Program OFF-time

1. Press [▼] or [▲] to change the hour.
2. Press [ENTER].
3. Press [▼] or [▲] to change the minute.
4. Press [ENTER] to confirm.



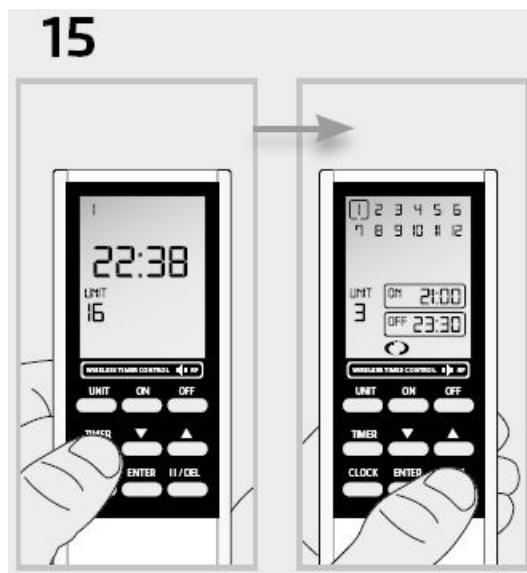
Select a timer mode

1. Press [▼] or [▲] to change the mode (daily, once, random).
2. Press [ENTER] to confirm.
3. Press [TIMER] to return to the main screen or wait 10 seconds and the main screen will automatically appear.



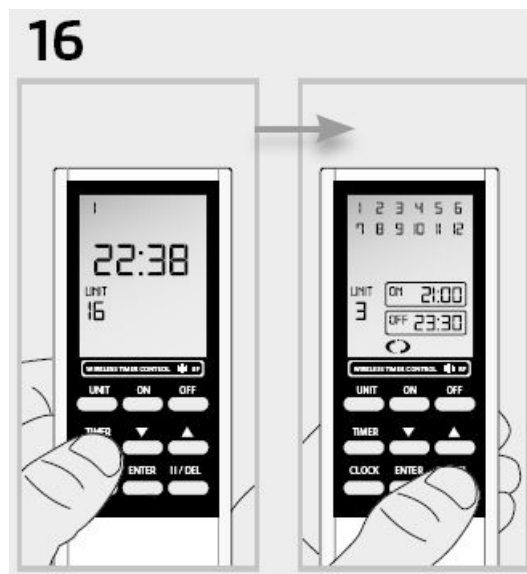
Pause a timer program

1. Press [TIMER] for 3 seconds.
2. Press [▼] or [▲] to select the program that needs to be paused.
3. Press [II/DEL]. A box will appear around the timer program.
4. Press [ENTER] to confirm.
5. Press [TIMER] to return to the main screen or wait 10 seconds. Repeat this procedure to unpause a timer program.



Delete a timer program

1. Press [TIMER] for 3 seconds.
2. Press [▼] or [▲] to select the program that needs to be deleted.
3. Press [II/DEL] for 3 seconds until the program starts to flash.
4. Press [ENTER] to confirm the deletion.
5. Press [TIMER] to return to the main screen or wait for 10 seconds to automatically return.



Enable or disable Child Protection

1. Press and hold [ENTER] and [II/DEL] for 3 seconds to enable Child Protection. CP will appear in the display. All keys will be blocked.
2. Press and hold [ENTER] and [II/DEL] again for 3 seconds to disable Child Protection.



Safety Instructions

Product support:

www.trust.com/71090.

Warranty conditions:

www.trust.com/warranty. To ensure the safe handling of the device, follow the safety advice on: www.trust.com/safety. The Wireless range is strongly dependent on local conditions such as the presence of HR glass and reinforced concrete. Never use Trust Smart Home products for life-support systems. This product is not water-resistant. Do not attempt to repair this product. Wire colors may vary per country. Contact an electrician when in doubt about wiring. Never connect lights or equipment that exceed the maximum load of the receiver. Exercise caution when installing a receiver voltage may be present, even when a receiver is switched off. Maximum radio transmits power: -6.41 dBm. Radio transmission frequency range: 433,92 MHz.

- Disposal of packaging materials – Dispose of packaging materials that are no longer needed in accordance with applicable local regulations.
- Disposal of the device – The adjacent symbol of a crossed-out wheelie bin means that this device is subject to Directive 2012/19/EU.
- Disposal of batteries – Used batteries may not be disposed of in the household waste. Only dispose of batteries when they are fully discharged. Dispose of batteries according to local regulations.
- Trust Electronics Ltd. declares that item number 71090/71090-02 is in compliance with Directive Electromagnetic Compatibility Regulations 2016, and Radio Equipment Regulations 2017. The full text of the declaration of conformity is available at the following internet address: www.trust.com/compliance.
- Trust International B.V. declares that item number 71090/71090-02 is in compliance with Directive 2014/53/EU – 2011/65/EU. The full text of the EU declaration of conformity is available at the following web address: www.trust.com/compliance.

Declaration of Conformity

Trust International B.V. declares that this Trust Smart Home-product:

- **Model:** ATMT-502 Timer remote control
- **Item number:** 71090/71090-02

- **Intended use:** Indoor

is in compliance with the essential requirements and other relevant provisions of the following directives:

- ROHS 2 Directive (2011/65/EU)
- RED Directive (2014/53/EU)

The full text of the EU declaration of conformity is available at the following web address:

www.trust.com/compliance.

TECHNICAL SPECIFICATIONS

Code system	Automatic
Number of channels	16
Number of timers	12 (the remote can switch on/off a maximum of 12 times per day)
Battery	3V lithium battery type CR2032 (included)
Size	HxWxD: 120 x 46 x 18 mm

TRUST SMART HOME

LAAN VAN BARCELONA 600

3317DD DORDRECHT

NEDERLAND


www.trust.com.

Trust Electronics Ltd.,

Sopwith Dr, Weybridge, KT13 0NT, UK.

All brand names are registered trademarks of their respective owners. Specifications are subject to change without prior notice. Made in China.

Documents / Resources

	Trust 71090 Timer Remote Control [pdf] User Manual 71090 Timer Remote Control, 71090, Timer Remote Control, Remote Control, Control
---	--

References

- [Trust.com - Contact & Support - Compliance](#)
- [Trust.com - Home](#)
- [Trust.com - Home](#)
- [Trust.com - Timer Remote Control ATMT-502](#)
- [Trust.com - Contact & Support - Compliance](#)
- [Trust.com - Contact & Support - Safety information](#)

- [Trust.com - Contact & Support - Warranty conditions](#)

Manuals+.