

Trusda

Trusda CW006
Concept C
Turbo Boost 2.1
Complete Hi Fi
System



Trusda CW006 Concept C Turbo Boost 2.1 Complete Hi Fi System Instruction Manual

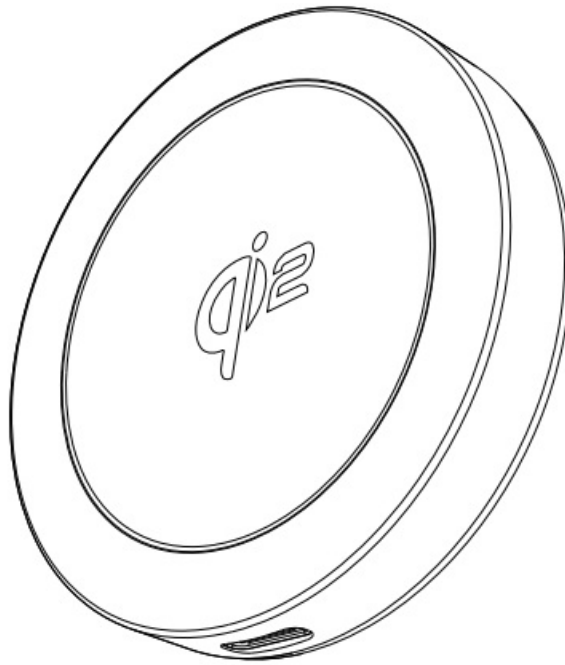
[Home](#) » [Trusda](#) » Trusda CW006 Concept C Turbo Boost 2.1 Complete Hi Fi System Instruction Manual 

Contents

- [1 Trusda CW006 Concept C Turbo Boost 2.1 Complete Hi Fi System](#)
- [2 Brief introduction](#)
- [3 How to use](#)
- [4 Precautions](#)
- [5 Disclaimers](#)
- [6 FCC STATEMENT](#)
- [7 Documents / Resources](#)
 - [7.1 References](#)
- [8 Related Posts](#)

Trusda

Trusda CW006 Concept C Turbo Boost 2.1 Complete Hi Fi System



Product Specifications:

- Size: 80x120mm
- Material: 100g writing paper
- Printing: Double sided monochrome
- Printing Process: Folding
- Input: USB-C
- Wireless Charge MPP Maximum Output: 5V/3A, 9V/2.22A, 5W/15W MPP 15W
- USB-C mouth Input 5V/3A, 9V/2.22A
- Wireless Charge MPP 5W/15W
- Maximum Output MPP 15W

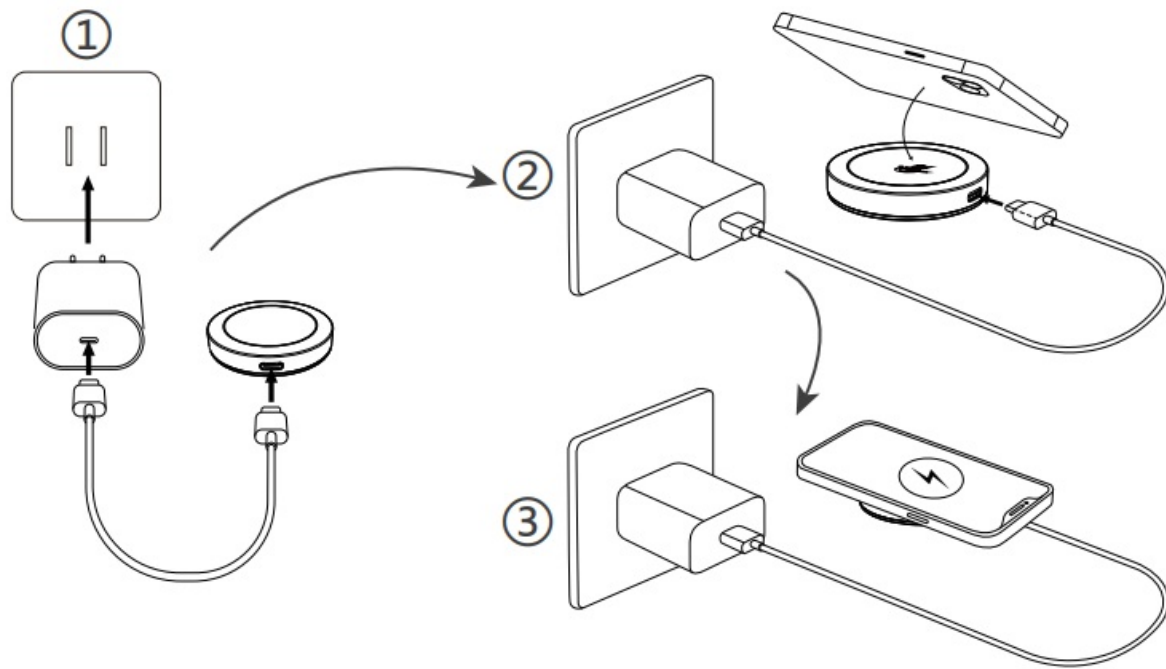
Brief introduction

- This product realizes short-distance wireless transmission of electric energy through magnetic induction, which can charge the device, and adopts the technical working method of fixed frequency modulation duty cycle. The receiving device that meets the Qi2.0 MPP standard can be charged with this product, and supports fast wireless charging, applicable to devices with iPhone 12 or above.
- This product has wide operating voltage (DC 5V-9V) which can adapt to most adapter and fast charge adapter.

Basic instructions for product operation

- When the product is connected to the power supply. At this time, the device to be charged will start wireless charging.
- Foreign body Detection function (FOD): When metal objects such as coins and keys are placed on the coil of the product in standby state, and stop discharge.

How to use



Precautions

- Please read this instruction manual carefully before using this product.
- The mobile power supply shall be used within the charging and discharging rated specification specified in the specification, and the ambient temperature during charging and discharging shall be between 15 °C and 35 °C.
- Please keep this product and related accessories well away from children.
- Keep away from inflammables and explosives when using the product.
- Please use the specified charger and approved accessories. Unauthorized power charger and accessories may damage your electronic products and mobile power host.
- Please use the mobile power supply properly according to the local laws, regulations and restrictions. In case of unauthorized situations, such as aircraft landing or near medical instruments, you should avoid charging and turn off your mobile phone or other electronic products immediately to avoid interference.
- The product may be damaged due to improper operation during transportation. If the product is found to be abnormal, such as package damage, battery package deformation, smell of electrolyte and leakage, stop using the product immediately.
- Do not put the disused mobile power into the dustbin, but put it into the special battery recycling bin.

Disclaimers

The equipment damage and safety problems caused by any of the following points are not within the scope of the warranty and responsibility of manufacturer.

- Damage caused by not following the operation instructions and safety warnings in the instruction manual.
- Damage caused by operation in harsh environment beyond the instruction manual.
- Damage caused by storage conditions not meeting the requirements of this instruction manual.
- It is forbidden to apply or operate beyond the conditions described in this instruction manual. If the customer

needs, he / she should contact manufacturer technology in advance. In this case, additional experiments are required to verify the performance and safety.

After-sale service

The product shall be valid within 12 months from the date of completion or delivery.

For FAQs and more information, please visit: www.trusda.com/support



FCC STATEMENT

This device complies with part 15 of the FCC Rules. Operation is subject to the following two conditions:

1. This device may not cause harmful interference, and
2. This device must accept any interference received, including interference that may cause undesired operation.

Any changes or modifications not expressly approved by the party responsible for compliance could void the user's authority to operate the equipment.

NOTE: This equipment has been tested and found to comply with the limits for a Class B digital device, pursuant to Part 15 of the FCC Rules. These limits are designed to provide reasonable protection against harmful interference in a residential installation. This equipment generates, uses and can radiate radio frequency energy and, if not installed and used in accordance with the instructions, may cause harmful interference to radio communications. However, there is no guarantee that interference will not occur in a particular installation. If this equipment does cause harmful interference to radio or television reception, which can be determined by turning the equipment off and on, the user is encouraged to try to correct the interference by one or more of the following measures:

- Reorient or relocate the receiving antenna.
- Increase the separation between the equipment and receiver.
- Connect the equipment into an outlet on a circuit different from that to which the receiver is connected.
- Consult the dealer or an experienced radio/TV technician for help.

FCC Radiation Exposure Statement

This equipment complies with FCC radiation exposure limits set forth for an uncontrolled environment. This equipment should be installed and operated with a minimum distance of 20 cm between the radiator and your body.

Documents / Resources



[Trusda CW006 Concept C Turbo Boost 2.1 Complete Hi Fi System](#) [pdf] Instruction Manual CW006 Concept C Turbo Boost 2.1 Complete Hi Fi System, CW006, Concept C Turbo Boost 2.1 Complete Hi Fi System, Turbo Boost 2.1 Complete Hi Fi System, 2.1 Complete Hi Fi System, Hi Fi System, System

References

- [User Manual](#)

[Manuals+](#), [Privacy Policy](#)

This website is an independent publication and is neither affiliated with nor endorsed by any of the trademark owners. The "Bluetooth®" word mark and logos are registered trademarks owned by Bluetooth SIG, Inc. The "Wi-Fi®" word mark and logos are registered trademarks owned by the Wi-Fi Alliance. Any use of these marks on this website does not imply any affiliation with or endorsement.