

TRUPER
PULA-7P
Variable
Speed
Polisher



TRUPER PULA-7P Variable Speed Polisher Instruction Manual

[Home](#) » [TRUPER](#) » TRUPER PULA-7P Variable Speed Polisher Instruction Manual 

Contents

- 1 [TRUPER PULA-7P Variable Speed Polisher](#)
- 2 [Specifications](#)
- 3 [FAQs](#)
- 4 [PRODUCT INFORMATION](#)
- 5 [Technical Data](#)
- 6 [Power requirements](#)
- 7 [Safety Warnings](#)
- 8 [Parts](#)
- 9 [Preparation](#)
- 10 [Operating instructions](#)
- 11 [Startup](#)
- 12 [Maintenance](#)
- 13 [Authorized service centers](#)
- 14 [Warranty Policy](#)
- 15 [Documents / Resources](#)
 - 15.1 [References](#)
- 16 [Related Posts](#)

TRUPER

TRUPER PULA-7P Variable Speed Polisher



Specifications

- **Model:** PULA-7P
- **Description:** Variable speed polisher
- **Diameter:** 7" (175 mm)
- **Voltage:** 127 V
- **Frequency:** 60 Hz
- **Current:** 9.5 A
- **Power:** 1200 W
- **No Load Speed:** Not specified
- **Duty Cycle:** Not specified
- **Conductors:** 3 (one grounded)
- **Insulation Class:** Class II, IP20, Class E

FAQs

- **Q: What should I do if the power cable gets damaged?**
 - **A:** The power cable should only be replaced by the manufacturer or at a TRUPER Authorized Service Center to avoid risks of electric shock or injury.
- **Q: How should I operate power tools outdoors?**
 - **A:** Use a grounded extension cable labeled "For Outdoors Use" to reduce the risk of electric shock when operating power tools outdoors.

PRODUCT INFORMATION

CAUTION: To gain the best performance of the tool, prolong the duty life, make the Warranty valid if necessary,

and avoid hazards of fatal injuries please read and understand this Manual before using the tool. Keep this manual for future reference. The illustrations in this manual are for reference only. They might be different from the real tools.

Use and care recommendations

- ⚠ RESPECT THE WORK CYCLES. 20 minutes of work per 10 minutes of rest. Maximum 1 hour and 30 minutes daily.
- ⚠ AVOID using the cord to move, lift, or disconnect the tool.
- ⚠ Always use the auxiliary handle or the “D” handle.
- ⚠ NEVER tighten the shaft lock when the disc is spinning.
- ⚠ Keep the tool's ventilation openings clean.
- ⚠ Perform regular MAINTENANCE on your machine.

Technical Data

PULA-7P			
Code •	28151		
Description •	Variable speed polisher		
Diameter •	7"		
Voltage •	127 V~		
Frequency •	60 Hz		
Current •	9.5 A		
Power •	1 200 W		
No load speed •	1000 RPM – 3 500 RPM		
Duty Cycle •	20 minutes of work per 10 minutes of rest. Maximum 1 hour and 30 minutes daily		
Conductors •	18 AWG x 2C with insulation temperature of 221 °F		
Insulation •	Class II	IP Grade •	IP20

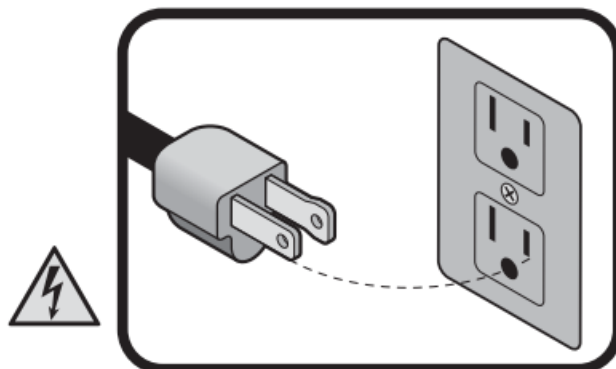
- The power cable has cable ties type: Y
- The construction class of the tool is Class II.
- The thermal insulation class of the motor windings: Class E.

⚠ **WARNING** Avoid the risk of electric shock or severe injury. When the power cable gets damaged it should only be replaced by the manufacturer or at a TRUPER Authorized Service Center. The build quality of the electric insulation is altered if spills or liquid gets into the tool while in use. Do not be exposed to rain, liquids, and/or dampness. ⚡

⚠ **WARNING** Before gaining access to the terminals all power sources should be disconnected. ⚡

Power requirements

⚠️ WARNING: Tools with double insulation and reinforced insulation are equipped with a polarized plug (one prong is wider than the other) This plug will only fit in the right way into a polarized outlet. If the plug cannot be introduced into the outlet, reverse the plug. If it still doesn't fit, call a qualified electrician to install for you a polarized outlet. Do not alter the plug in any way. Both insulation types eliminate the need for a grounded third power cord with three prongs or a grounded power connection.



⚠️ WARNING: When using an extension cable, verify the gauge is enough for the power that your product needs. A lower gauge cable will cause a voltage drop in the line, resulting in power loss and overheating. The following table shows the right size to use depending on the cable's length and the ampere capability shown in the tool's nameplate. When in doubt use the next higher gauge.

Ampere capacity	Number of conductors	Extension gauge	
		From 5.9' to 49.2'	Higher than 49.2'
From 0 A and up to 10 A	3 (one grounded)	18 AWG(*)	16 AWG
From 10 A and up to 13 A		16 AWG	14 AWG
From 13 A and up to 15 A		14 AWG	12 AWG
From 15 A and up to 20 A		8 AWG	6 AWG

⚠️ WARNING: When operating power tools outdoors, use a **VOLTECK** grounded extension cable labeled "For Outdoors Use". These extensions are specially designed for operating outdoors and reduce the risk of electric shock. ⚠️

⚠️ WARNING! Read carefully all safety warnings and instructions listed below. Failure to comply with any of these warnings may result in electric shock, fire, and/or severe damage. Save all warnings and instructions for future reference. The term 'power tool' in the warnings refers to both your main (corded) power tool and the cordless power tool.

• Work area

- Keep your work area clean, and well-lit. Cluttered and dark areas may cause accidents. ⚠️
- Never use the tool in explosive atmospheres, such as in the presence of flammable liquids, gases, or dust. Sparks generated by power tools may ignite the flammable material. ⚠️
- Keep children and bystanders at a safe distance while operating the tool. Distractions may cause losing control. ⚠️

• Electrical Safety

- The tool plug must match the power outlet. Never modify the plug in any way. Do not use any adapter plugs with grounded power tools. Modified plugs and different power outlets increase the risk of electric



shock.

- Avoid body contact with grounded surfaces, such as pipes, radiators, electric ranges, and refrigerators. The risk of electric shock increases if your body is grounded.
- Do not expose the tool to rain or wet conditions. Water entering the tool increases the risk of electric shock.
- Do not force the cord. Never use the cord to carry, lift, or unplug the tool. Keep the cord away from heat, oil, sharp edges, or moving parts. Damaged or entangled cords increase the risk of electric shock.
- When operating a tool outdoors, use an extension cord suitable for outdoor use. Using an adequate outdoor extension cord reduces the risk of electric shock.
- If operating the tool in a damp location cannot be avoided, use a ground fault circuit interrupter (GFCI) protected supply. Using a GFCI reduces the risk of electric shock.

• Personal safety

- Stay alert, watch what you are doing, and use common sense when operating a tool. Do not use a power tool while you are tired or under the influence of drugs, alcohol, or medication.
- A moment of distraction while operating the tool may result in personal injury.
- Use personal protective equipment. Always wear eye protection.
- Protective equipment such as safety glasses, anti-dust masks, non-skid shoes, hard hats, and hearing protection used in the right conditions significantly reduce personal injury.



- Prevent unintentional starting up. Ensure the switch is in the “OFF” position before connecting to the power source and/or battery as well as when carrying the tool. Transporting power tools with the finger on the switch or connecting power tools with the switch in the “ON” position may cause accidents.
- Remove any wrench or vice before turning the power tool on. Wrenches or vices left attached to rotating parts of the tool may result in personal injury.
- Do not overreach. Keep proper footing and balance at all times. This enables better control of the tool during unexpected situations.
- Dress properly. Do not wear loose clothing or jewelry. Keep hair, clothes, and gloves away from the



moving parts. Loose clothes, jewelry, or long hair can get caught in moving parts.

- If you have dust extraction and recollection devices connected to the tool, inspect their connections and use them correctly. Using these devices reduces dust-related risks.

• Power Tools Use and Care

- Do not force the tool. Use the adequate tool for your application. The correct tool delivers a better and



safer job at the rate for which it was designed.

- Do not use the tool if the switch is not working properly. Any power tool that cannot be turned ON or OFF is dangerous and should be repaired before operating.
- Disconnect the tool from the power source and/or battery before making any adjustments, changing accessories, or storing. These measures reduce the risk of accidentally starting the tool.
- Store tools out of the reach of children. Do not allow persons who are not familiar with the tool or its



instructions to operate the tool. Power tools are dangerous in the hands of untrained users.

- Service the tool. Check the mobile parts are not misaligned or stuck. There should not be broken parts or other conditions that may affect its operation. Repair any damage before using the tool. Most accidents



are caused due to poor maintenance of the tools.

- Keep the cutting accessories sharp and clean. Cutting accessories in good working conditions are less likely to bind and are easier to control.
- Use the tool, components, and accessories following these instructions and the projected way to use it for the type of tool when inadequate working conditions. Using the tool for applications different from those it was designed for, could result in a hazardous situation.


- **Service**

- Repair the tool in a TRUPER Authorized Service Center using only identical spare parts. This will ensure that the safety of the power tool is maintained.

Safety Warnings

Safety warnings for the use of variable speed polishers

This electric tool is designed to work as a polisher. Read all safety warnings, instructions, illustrations, and specifications provided with this electric tool.

- Failure to follow the instructions below can result in electric shock, fire, and/or serious injury.
- Never keep your car running when using the polisher in an enclosed space.
- It is not recommended for operations such as grinding, brushing, sanding, or cutting.
- Operations for which this tool was not designed can cause an accident and result in personal injury.
- Do not use accessories that are not specifically designed and recommended by the manufacturer.
- Perform a test with your polisher before starting the work. If the tool makes a strange noise or vibrates irregularly, turn it off. Disconnect the tool and take it to a TRUPER Authorized Service Center.
- When not in use, the tool should be turned off and unplugged.
- To prevent accidental starts, keep fingers away from the on/off switch when connecting the polisher to the outlet.
- To avoid electric shocks, keep the tool dry and clean, free of any oil and grease residue.
-  **CAUTION:** During polishing operations, keep the cord away from the polisher's path; otherwise, it could be

caught and cut by the disc, exposing the operator to electric shock.



- Do not force the tool. Hold it firmly by both handles without applying downward pressure. Otherwise, the machine's movement will be slower, the quality of the work will be reduced, and severe damage to the tool may occur.
- Take care of your tool. Your work will be easier if you keep your tool in good condition.



-  **WARNING:** Use safety glasses.

- Keep people present at a safe distance from the work area. Anyone entering the work zone should wear personal protective equipment.
- Fragments from the workpiece or a broken accessory can detach and cause damage beyond the immediate operating area.
- Place the power cord away from the rotating accessory.
- If control of the power tool is lost, the cord can be cut or tangled, and the operator's arm or hand can be pulled toward the rotating accessory.
- Never release the power tool until the accessory comes to a complete stop.
- The rotating accessory can snag on a surface and render the power tool out of control.
- Do not operate the power tool while carrying it by your side.
- Accidental contact with the rotating accessory can snag on clothing, pulling the accessory towards your body.
- Regularly clean the ventilation slots of the power tool.
- The motor fan directs dust into the housing, and excessive accumulation of metal dust can pose an electrical risk.
- Do not use the power tool near flammable materials.
- Sparks can ignite these materials.
- Do not use accessories that require liquid coolants.
- The use of water or other liquid coolants can result in electric shock or electrocution.
- The fact that the accessory can be installed on the power tool does not guarantee safe operation.
- The designated speed of the accessory must be at least equal to the maximum speed marked on the power tool.
- Accessories operating faster than their designated speed may break and detach.
- The outer diameter and thickness of the accessories should fall within the assigned capacity of the power tool.
- Incorrectly sized accessories may not be adequately protected or controlled.
- The threaded assembly (installation) of accessories should match the thread of the shaft (spindle).
- Accessories that do not match the installation devices of the power tool cause imbalance, excessive vibration, and can lead to loss of control.
- Do not use a damaged accessory. Before each use, inspect the accessories, for example: Check backings for cracks, tears, or excessive wear.
- If the power tool or an accessory fall, inspect for possible damage or install an undamaged accessory. After inspecting and installing an accessory, keep away, and keep people present away from the plane of the rotating accessory; operate the power tool at maximum speed without a load for one minute.
- Damaged accessories typically break during this period.
- Use personal protective equipment. Depending on the application, wear a face shield, safety glasses, and, if necessary, a dust mask, ear protectors, gloves, and a workshop apron capable of stopping small abrasive fragments or workpiece chunks.
- Eye protection should stop debris generated by various operations. Dust masks or respirators should filter particles produced by the operation. Prolonged exposure to high-intensity noise can cause hearing loss.

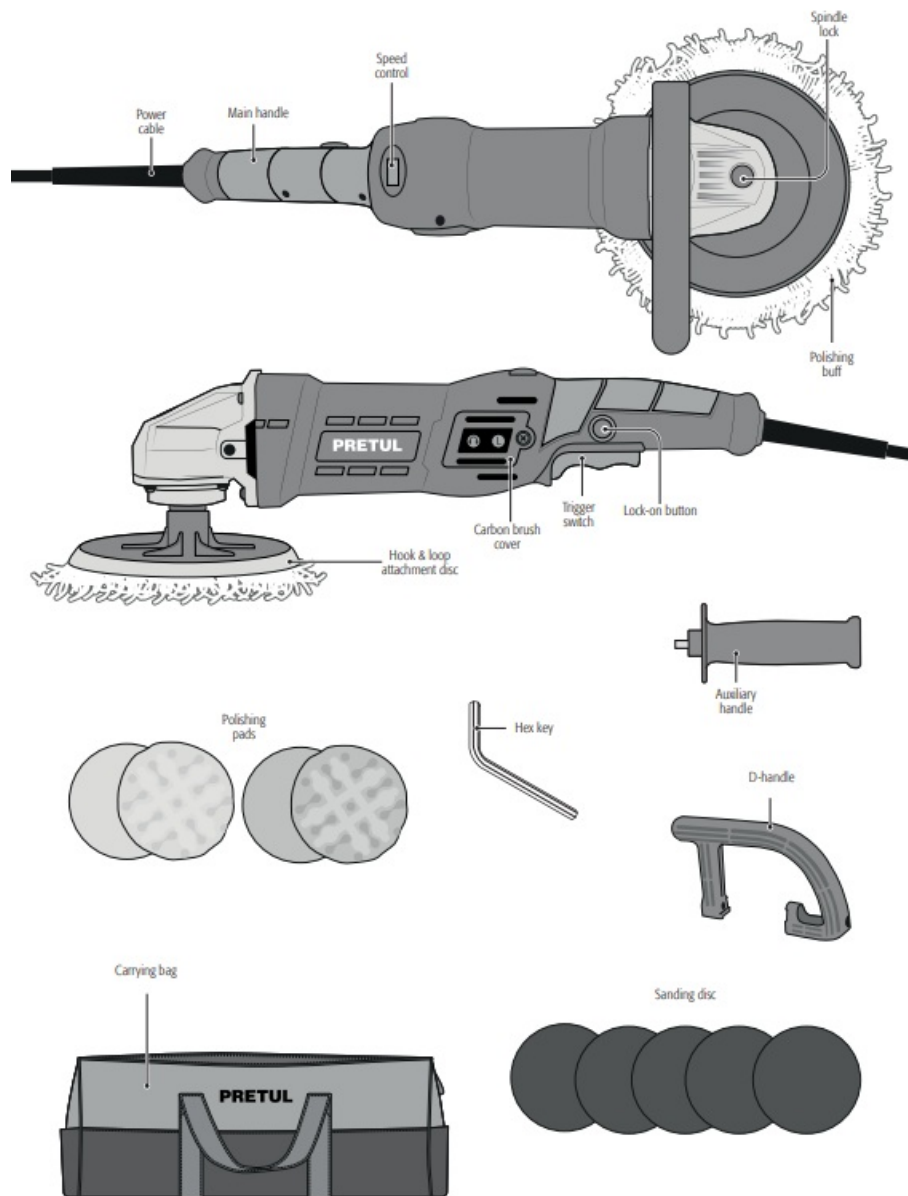
Kickback and related warnings

- Kickback is a sudden reaction when a rotating wheel, backing pad, brush, or any other accessory becomes

jammed or snagged. Jamming or snagging causes a rapid stoppage of the rotating accessory, which in turn forces the power tool uncontrollably in the opposite direction of the accessory's rotation at the point of operation.

- Kickback can occur because of misuse of power tools and/or incorrect operating procedures or inappropriate conditions and can be avoided by taking the essential precautions outlined below:
- Maintain a firm grip on the power tool, keep your body and arm positioned to resist kickback forces.
- Always use the auxiliary handle if provided, for maximum control over kickback or the motor's torsional reaction during startup.
- The operator can control torsional moment and kickback forces with proper precautions.
- Never place your hand near the rotating accessory.
- Accessories can kick back into the hand.
- Do not position your body in the area where the power tool may move if kickback occurs.
- This propels the power tool in the opposite direction of the disc's movement at the point of engagement or snag.
- Exercise special care when working in corners, sharp edges, among others. Avoid bouncing and accessory snagging.
- When working in corners, sharp edges, or encountering bouncing, it can cause the accessory to snag and lead to loss of control of the power tool or kickback.

Parts



Preparation

Assembly of the D-handle

- Align the D-handle with the head of the polisher and match the screw holes (A).
- Securely screw the D-handle to the polisher head using the included screws, washers, and key.

Assembly of the auxiliary handle

- For safe operation, use the auxiliary handle; place it in either of the two holes (B) to mount it and make your work easier.

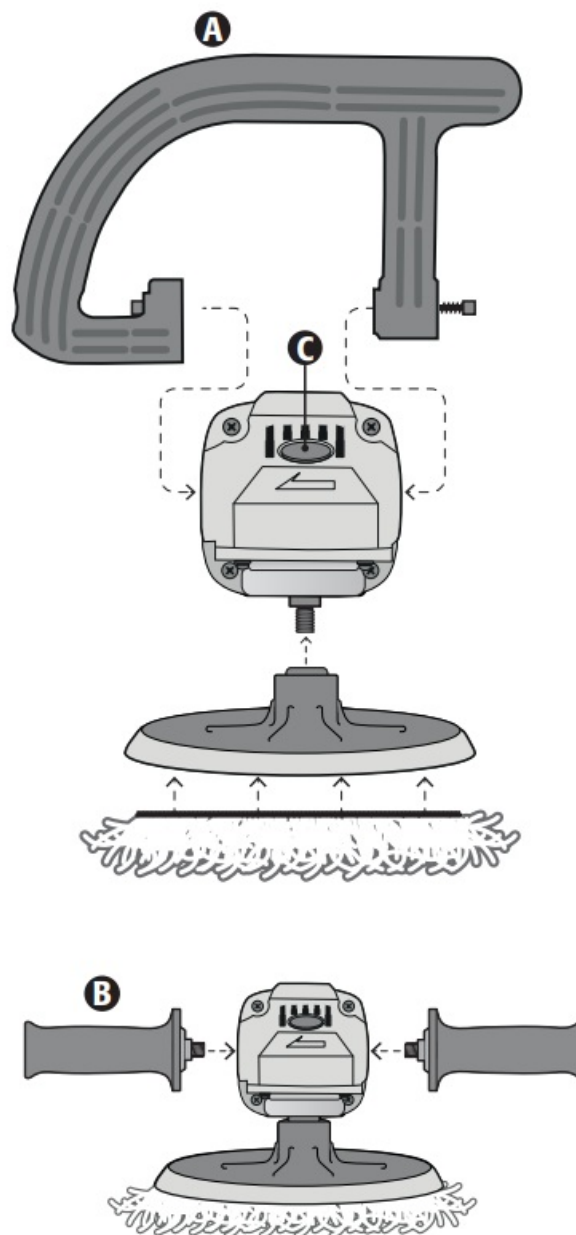
Assembly of the disc

- Attach the pad to the disc with hook and loop fastening.
- Press the shaft lock (C) and mount the disc to the polisher head by screwing it tightly.
- To remove the disc, press the shaft lock and unscrew the disc.

- **⚠CAUTION:** The shaft lock should only be pressed when mounting or dismounting the disc, it should never be pressed to stop the disc during the polishing operation, as it may damage the tool and expose you to personal injury. The threaded assembly (installation) of accessories should match the thread of the shaft (spindle). For accessories installed with flanges, the entry hole of the accessory to the shaft should match the diameter of the flange. Accessories that do not match the installation devices of the power tool cause imbalance, and excessive vibration, and can lead to loss of control. Do not use damaged accessories.

- **Before each use, inspect the accessories, for example:**

1. Check for damage and cracks.
2. Check backings for cracks, tears, or excessive wear.
3. Check that the base is not cracked. If the power tool or an accessory falls, inspect for possible damage or install a damaged accessory. After inspecting and installing an accessory, run the power tool at maximum speed without a load for one minute, keeping yourself and others present away from the plane of the rotating accessory. Damaged accessories typically break during this period.



Operating instructions

- **D-handle:** For your safety, use the D-handle.

- **Polishing disc installation:** Mount the rubber disc and wool disc on the shaft, press the shaft lock, and screw the disc tightly.
- **Variable speed and soft start:** Adjust the continuously variable speed regulator from 1 000 rpm to 3 500 rpm as needed, with the highest speed at the '6' position, gradually decreasing at the '1' position. Always turn off and wait until the polishing wheels have completely stopped before storing the machine.

Polishing pads

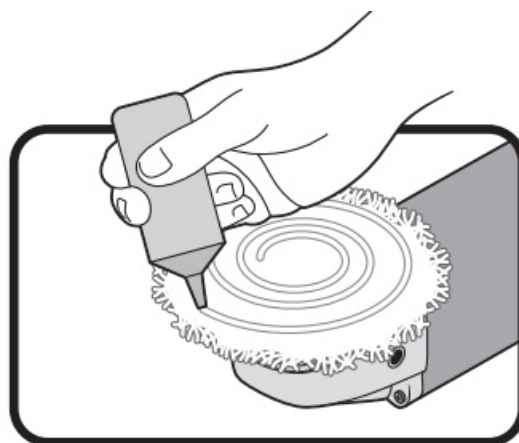
- Polishing sponges or any other polishing accessory are directly mounted to the disc with hook and loop fastening.
- To install the sponge, first remove any dirt or foreign materials that may adhere to the surfaces of the disc and interchangeable accessories. Place the sponge on the hook and loop fastening disc so that the edges are aligned.
- The polisher includes the following interchangeable accessories:
 1. Sanding discs
 2. Polishing sponges
 3. Buffing wheel
- To remove the sponge, simply pull it by the edge.

⚠ CAUTION: Ensure that the pad and the sponge are aligned and properly installed. Otherwise, the sponge may cause excessive vibration, leading to loss of control, or the sponge may be expelled from the tool.

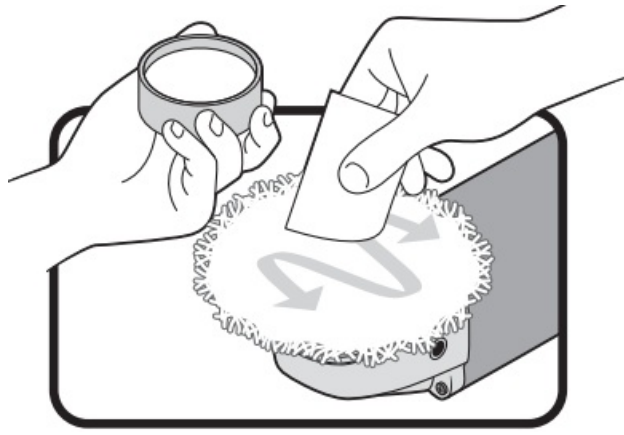
Polishing application: Most polishes come in paste or liquid form. Before using any polish, read all instructions regarding the product's uses and the correct application method.

Application of liquid polish.

- Apply a small circle of liquid, approximately 3 cm in diameter, in the center of the buffing wheel, followed by two more rings, each slightly larger than the previous one.
- After the initial application, the buffing wheel doesn't absorb as much liquid. Therefore, apply only two rings, using half of the initial amount.



- **Application of paste polish.**
 - Using a putty knife or any other flat, dull object, apply about a teaspoon of paste to the buffing wheel. Spread the paste evenly over the entire surface of the buffing wheel.
 - **NOTE:** Do not apply the paste directly to the surface being polished.



- **⚠ WARNING:** The switch can be locked in the on position for the operator's convenience during extended use. Be careful when locking the tool in the on position and keep a firm grip on the tool. Do not connect the tool with the lock switch activated. The tool will start without support and may cause personal injury or breakage.

Startup

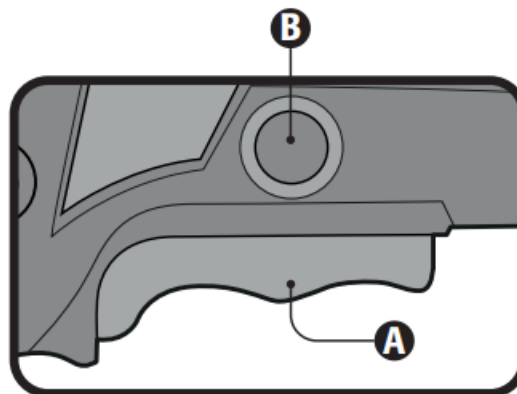
Power on and operation control

• Intermittent Operation:

- Plug the tool into the outlet.
- Press the switch (A) to make the tool start working.
- To stop its use, simply release the switch.

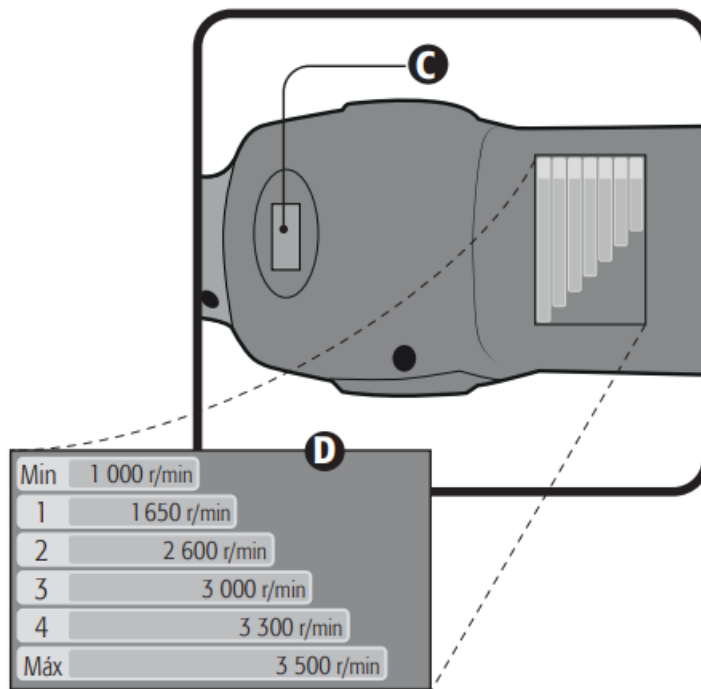
• Continuous Operation:

- Plug the tool into the outlet.
- Press the switch (A) and lock it by pressing the continuous use button (B).
- To interrupt its operation, press and then release the switch.



• Speed control

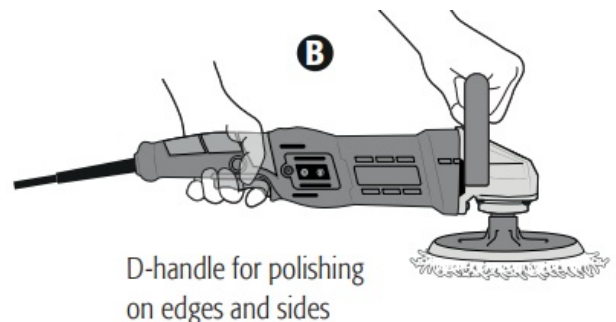
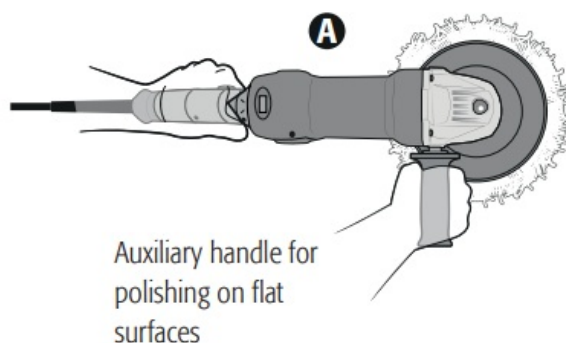
- The tool can be operated at different speeds. These are selected by adjusting the speed control from minimum to maximum (C). Turn the speed control while referencing the speed chart (D).
- Generally, low speeds are recommended for small work areas, and high speeds for larger surfaces. Use the speed that best suits the working conditions.



- **CAUTION:** Continuous use of the tool at low speeds for an extended period will overload the motor and result in inefficient tool operation. The speed control dial can only be turned up to Max and back to Min. Do not force it beyond Max or Min, or the speed adjustment function may stop working.

• How to properly grip the tool

- Always hold the tool with both hands. One hand gripping the main handle and the other the auxiliary handle (A) or D-handle (B). Be careful not to obstruct the ventilation slots.



• Polishing

- Move the polisher back and forth over the working surface with long strokes.
- Be aware that excessive pressure, incorrect angles, or improper movements can cause swirl marks or burns in the finish. To avoid them, do not use high speeds when polishing small areas, press the buffing wheel lightly onto the surface, and keep the polisher constantly moving without letting it stay static in one spot, especially near edges or changes in the working surface.
- Follow the instructions of the polishing products for a quality job.
- For best results, it is recommended to use original accessories such as the TRUPER brand BOR-PULA-7N.
- The most common mistake is applying too much wax.
- If the buffing wheel absorbs too much wax, it won't last long, and the polishing job will be more difficult and take a long time to finish.
- Always disconnect the tool before proceeding to clean it.
- Never use water or other liquids; only use a brush.
- To prevent the motor from overheating, regularly clean the ventilation slots.

- The housing should not be cracked or damaged.
- Always check that the cable is not cut or peeled.
- After prolonged use, the grease in the tool head should be replaced at a TRUPER authorized Service Center.
- **CAUTION:** Be attentive when polishing rough surfaces, joints, or crevices where the buffing wheel may get stuck. A stuck buffing wheel can make you lose control of the tool and/or burn the finish. To reduce this risk, use low speeds on rough surfaces, and for complicated surfaces such as mirrors or moldings, avoid using the tool and polish manually.

Maintenance

- Always ensure that the tool is disconnected from the power when performing machine maintenance.
- Remove chips, oil, and grease from the machine. Keep the tool and interchangeable accessories clean.
- Regularly check if all fastening screws are tight and ensure there are no cracks or damage to the tools.
- Inspect your tool regularly and ensure there is no damage to the cable.
- When the wool disc is worn out, replace it, making sure the wool disc is aligned with the edges of the rubber disc.

Repair

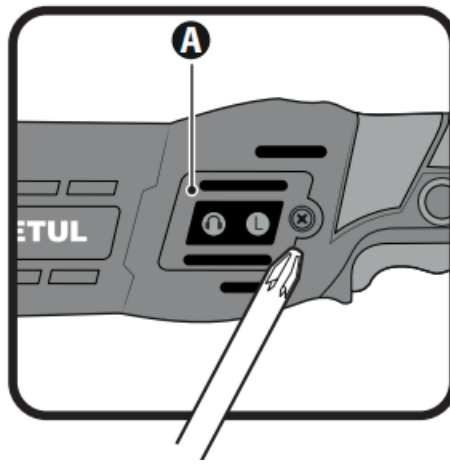
- Use only parts and accessories recommended by the manufacturer.
- In case the tool malfunctions, repairs should be carried out by an authorized TRUPER Service Center.

Storage

- Store the tool neatly in a dry place protected from dust and water.

Carbon brush replacement

- It is necessary to replace worn-out brushes (burnt, broken, or less than 5 mm long) with new brushes.
- When replacing brushes, always change both brushes.
- Use a screwdriver to remove the brush cover (A).
- Remove the worn brushes from the brush holders and blow away accumulated dust with compressed air.
- Place the new brushes by reversing the order. The brushes should easily fit into the brush holders.
- After installing the new brushes, allow the tool to run for 10 minutes without any workload to ensure better fitting of the brushes.
- Only use TRUPER replacement brushes, designed with the appropriate hardness and electrical resistance for each type of motor. Brushes outside of specifications can damage the motor.



Authorized service centers

In the event of any problem contacting a TRUPER Authorized Service Center, please see our webpage WWW.TRUPER.COM to get an updated list, or call our toll-free numbers 800 690-6990 or 800 018-7873 to get information about the nearest Service Center.

• AGUASCALIENTES

- DE TODO PARA LA CONSTRUCCIÓN
- GRAL. BARRAGÁN #1201, COL. GREMIAL, C.P. 20030,
- AGUASCALIENTES, AGS.
- **TEL.:** 449 994 0537

• BAJA CALIFORNIA

- SUCURSAL TIJUANA
- AV. LA ENCANTADA, LOTE #5, PARQUE INDUSTRIAL EL
- FLORIDO II, C.P. 22244, TIJUANA, B.C.
- **TEL.:** 664 969 5100

• BAJA CALIFORNIA SUR

- FIX FERRETERÍAS
- FELIPE ÁNGELES ESQ. RUIZ CORTÍNEZ S/N, COL. PUEBLO
- NUEVO, C.P. 23670, CD. CONSTITUCIÓN, B.C.S.
- **TEL.:** 613 132 1115

• CAMPECHE

- TORNILLERÍA Y FERRETERÍA AAA
- AV. ÁLVARO OBREGÓN #324, COL. ESPERANZA
- C.P. 24080 CAMPECHE, CAMP.
- **TEL.:** 981 815 2808

• JALISCO

- SUCURSAL GUADALAJARA
- AV. ADOLFO B. HORN # 6800, COL: SANTA CRUZ DEL
- **VALLE, C.P.:** 45655, TLAJOMULCO DE ZUÑIGA, JAL.
- **TEL.:** 33 3606 5285 AL 90

Warranty Policy

- **Code** 28151
- **Model** PULA-7P
- **Brand** PRETUL

Warranty. Duration:

1 year. Coverage: parts, components, and workmanship against manufacturing or operating defects, except if used under conditions other than normal; when it was not operated per the instructive; was altered or repaired by personnel not authorized by TRUPER®. To make the warranty valid, present the product, stamped policy invoice or receipt, or voucher, in the establishment where you bought it or in Corregidora 35, Centro, Cuauhtémoc, CDMX, 06060, where you can also purchase parts, components, consumables, and accessories. It includes the costs of transportation of the product that derives from the fulfillment of its service network. Phone number 800-018-7873. Made in China. Imported by TRUPER, S.A. de C.V. Parque Industrial 1, Parque Industrial Jilotepec, Jilotepec, Edo. de Méx. C.P. 54257, Phone number 761 782 9100.

Stamp of the business. Delivery date:



WWW.TRUPER.COM.

Documents / Resources

	<p>TRUPER PULA-7P Variable Speed Polisher [pdf] Instruction Manual</p> <p>PULA-7P, 28151, PULA-7P Variable Speed Polisher, PULA-7P, Variable Speed Polisher, Speed Polisher, Polisher</p>
--	---

References

- [User Manual](#)

[Manuals+](#), [Privacy Policy](#)

This website is an independent publication and is neither affiliated with nor endorsed by any of the trademark owners. The "Bluetooth®" word mark and logos are registered trademarks owned by Bluetooth SIG, Inc. The "Wi-Fi®" word mark and logos are registered trademarks owned by the Wi-Fi Alliance. Any use of these marks on this website does not imply any affiliation with or endorsement.