

PRETUL
TRUPER CALI-20P
Cordless Variable Speed
Jig Saw



TRUPER CALI-20P Cordless Variable Speed Jig Saw Instruction Manual

[Home](#) » [TRUPER](#) » TRUPER CALI-20P Cordless Variable Speed Jig Saw Instruction Manual 

Contents

- 1 TRUPER CALI-20P Cordless Variable Speed Jig Saw
- 2 Technical data
- 3 General power tool safety warnings
- 4 Safety warnings for Jig saws
- 5 Parts
- 6 Start up
- 7 Installation of the saw blade
- 8 Maintenance
- 9 Troubleshooting
- 10 Warranty policy
- 11 Documents / Resources
 - 11.1 References
- 12 Related Posts

PRETUL

TRUPER CALI-20P Cordless Variable Speed Jig Saw



Pretul Cordless Variable Speed Jig Saw Manual

Specifications

Code	28270
Description	Cordless variable speed jig saw
Tension	20 V
Miter Cutting	0° – 45° left/right
Speed	0 strokes/min – 2,500 strokes/min
Cutting Capacity	Wood 2" (50 mm) Steel 5/16" (8 mm)
Battery	Ion-lithium 20 V 2 Ah Charging time: 55 minutes approximately
Charger	Input: 127 V~ Output: 21 V 2.5 A

Contents

- Technical data
- Power requirements
- General power tool safety warnings
- Safety warnings for jig saws
- Parts
- Start up
- Maintenance
- Solutions to problems

- Authorized service centers
- Warranty policy

Use and Care Recommendations

- Charge the battery only with the included charger or its equivalent recommended by TRUPER.
- Keep the ventilation holes of the tool and charger clean.
- Perform periodic maintenance to your machine.

Technical Data

The power cable has cable clamps type: Y. Construction class of the tool is: Class III. The construction class of the charger is: Reinforced insulation.

Power Requirements

Tools with double insulation and reinforced insulation are equipped with a polarized plug. This plug will only fit in the right way into a polarized outlet. If the plug cannot be introduced into the outlet, reverse the plug. If it still doesn't fit, call a qualified electrician to install a polarized outlet. Do not alter the plug in any way. Both insulation types eliminate the need for a grounded third power cord with three prongs or a grounded power connection.

General Power Tool Safety Warnings

Read carefully all safety warnings and instructions listed below. Failure to comply with any of these warnings may result in electric shock, fire, and/or severe damage. Save all warnings and instructions for future references.

Work Area

- Keep your work area clean and well-lit. Cluttered and dark areas may cause accidents.
- Never use the tool in explosive atmospheres, such as in the presence of flammable liquids, gases, or dust.
- Keep children and bystanders at a safe distance while operating the tool.

Electrical Safety

- The tool plug must match the power outlet. Never modify the plug in any way.
- Avoid body contact with grounded surfaces.
- Do not expose the tool to rain or wet conditions.
- Do not force the cord. Keep the cord away from heat, oil, sharp edges, or moving parts.
- When operating a tool outdoors, use an extension cord suitable for outdoor use.
- If operating the tool in a damp location cannot be avoided, use a ground fault circuit interrupter (GFCI) protected supply.

Personal Safety

- Stay alert, watch what you are doing, and use common sense when operating a tool.
- Use personal protective equipment. Always wear eye protection.
- Prevent unintentional starting up. Ensure the switch is in the OFF position before connecting into the power source and/or battery.

Power Tools Use and Care

- Do not force the tool. Use the adequate tool for your application.
- Do not use the tool if the switch is not working properly.
- Disconnect the tool from the power source and/or battery before making any adjustments.
- Store tools out of the reach of children.
- Service the tool. Check the mobile parts are not misaligned or stuck.
- Keep the cutting accessories sharp and clean.
- Use the tool, components, and accessories in accordance with these instructions.

Safety Warnings for Jig Saws

Batteries and Charger

- Use only Pretul chargers to charge the tool battery.
- Use only batteries specifically designed for the tool.
- Do not use the charger outdoors.
- Do not expose the batteries to temperatures above 122°F (50°C).
- Batteries should be kept away from any metallic object that could cause the terminals to make contact.
- Under extreme conditions, battery fluid may leak. Avoid any contact.
- To maximize battery life, fully discharge the battery at least once a month.

Warning of Laser Radiation

Laser class 2. Do not look directly into the laser beam or the opening from which it emerges.

Parts

- Handle
- Battery unlock button
- Switch lock
- Laser switch
- On/off switch
- Security guard
- Laser with LED
- Clamping lever
- Battery
- Parallel guide adjustment screws
- Battery charger
- Base plate
- Parallel guide
- Battery terminals
- Quick-change T-shank blade system
- Pendulum action switch
- Scale for bevel angle
- Dust collector
- Hex key

- Saw blade

Start Up

Considerations for Battery Use

- The battery is shipped in a discharged state from the factory. It needs to be charged for approximately 55 minutes before it can be used.
- Charging should take place within a normal temperature range of 0°C to 45°C.

Battery Charging

1. Plug the charger into a 127 V~ power outlet. The charge indicator's green light will illuminate.
2. Slide the battery into the charger. The green light will go off, and the red light should illuminate, indicating the start of charging.
3. Once the battery is fully charged, the green light will illuminate again, and the red light will turn off.
4. Unplug the charger once the charging is complete.

Installation of the Saw Blade

Make sure the blade holder is free of material debris. Insert the saw blade in the chuck and check that it is securely fixed.

Plastic Base Protector

The tool comes with a protective cover for the base plate to safeguard delicate surfaces. To install it, attach the protector to the front of the base plate and then press it toward the back until you hear a clicking sound.

Maintenance

Cleaning and Care

- Keep the tool free of dust.
- Never use water or chemical-based cleansing materials to clean the tool.
- Clean only using a clean and dry cloth.
- Keep the ventilation slots always clean and free of obstructions.

Service

The tool should only be serviced in a TRUPER Authorized Service Center.

Lubrication

Apply regularly one drop of lubricant to the guide roller to gain an adequate sliding of the saw blade while cutting.

Environmental Protection

Faulty and/or discarded electrical or electronic apparatus have to be collected at the appropriate recycling locations.

Troubleshooting

Problem	Cause	Corrective Action
The jigsaw loses power.	Low battery.	Charge the battery.
The trigger cannot be pulled.	The switch safety lock is not engaged.	Hold down the switch safety lock to activate the power button.
The trigger can be pulled, but the machine does not work.	Battery discharged.	Charge the battery.
The LED light and laser do not turn on.	Switch is in the off position.	Press the laser switch to turn it on.
The battery is leaking.	Minor dripping may occur in extreme temperatures or after heavy use.	Immediately clean any liquid from the skin or clothing with soap and water.
The battery does not charge, and the charge level indicator light does not turn on.	Charger connection improperly installed on the battery.	Insert the battery charger connection correctly.

Authorized Service Centers

In the event of any problem contacting a Service Center, please see our webpage www.truper.com to get an updated list, or call our toll-free numbers 800 690-6990 or 800 018-7873 to get information about the nearest TRUPER Authorized Service Center.

Warranty Policy

- **Code:** 28270
- **Model:** CALI-20P
- **Brand:** Pretul
- **Warranty:** 1 year

FAQ

- **How do I charge the battery?**
 - Plug the charger into a 127 V~ power outlet, slide the battery into the charger, and wait for the green light to indicate a full charge.
- **What should I do if the jigsaw loses power?**
 - Check if the battery is low and charge it if necessary.
- **How can I maintain the tool?**
 - Keep the tool clean, check for any damage, and apply lubricant to the guide roller regularly.

Manual

Cordless variable speed jig saw

CALI-20P

20 V Tension

Applies for

- **Code** 28270
- **Model** CALI-20P

CAUTION

Read this manual thoroughly before using the tool.

CAUTION

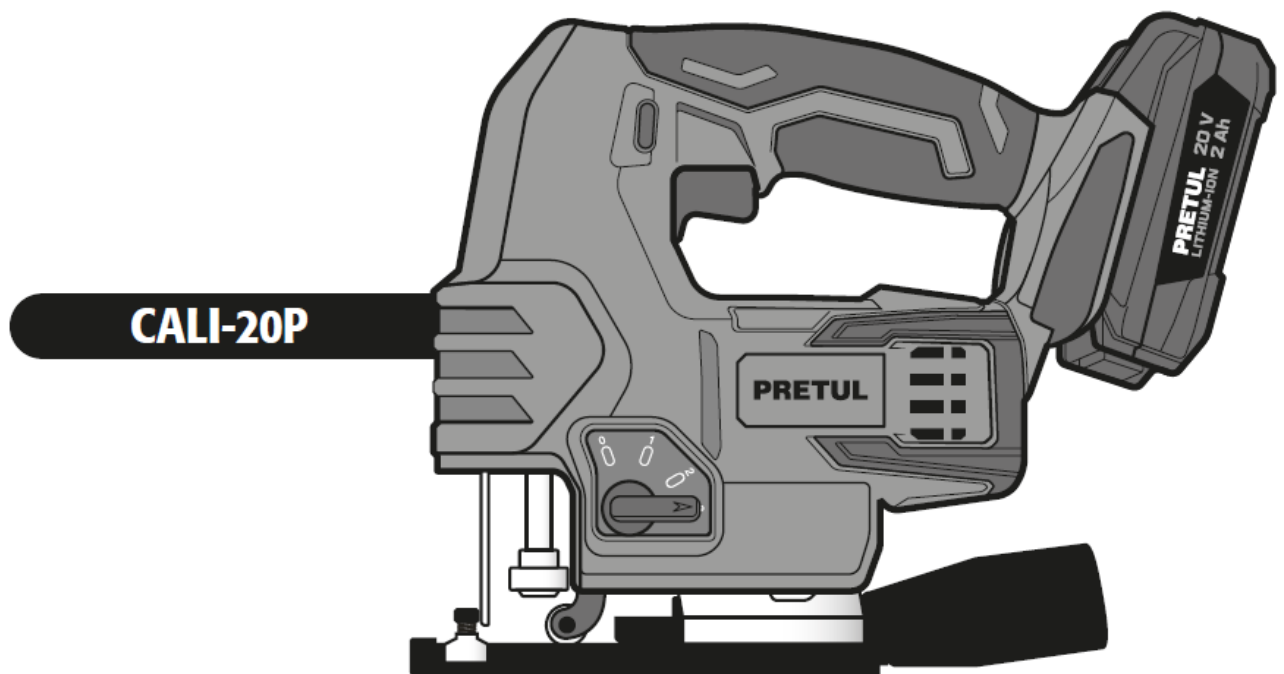
To gain the best performance of the tool, prolong the duty life, make the Warranty valid if necessary, and to avoid hazards of fatal injuries please read and understand this Manual before using the tool.

Keep this manual for future references.

The illustrations in this manual are for reference only. They might be different from the real tool.

Use and care recommendations

- Charge the battery only with the included charger or its equivalent recommended by TRUPER.
- Keep the ventilation holes of the tool and charger clean
- Perform periodic MAINTENANCE to your machine (page 9).



Technical data

CALI-20P

Code	•	28270
Description	•	Cordless variable speed jig saw
Tension	•	20 V \equiv
Miter Cutting	•	0° - 45° left / right
Speed	•	0 strokes/min – 2 500 strokes/min
Cutting Capacity	•	Wood 2" (50 mm) Steel 5/16" (8 mm)
Battery	•	Ion-lithium 20 V \equiv 2 Ah Charging time: 55 minutes approximately
Charger	•	Input: Tension: 127 V \sim Output: 21 V \equiv 2.5 A Frequency: 60 Hz Current: 0.9 A

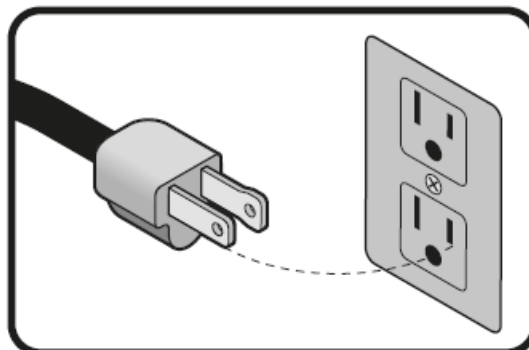
- The power cable has cable clamps type: Y
- Construction class of the tool is: Class III
- The construction class of the charger is: Reinforced insulation.

WARNING Avoid the risk of electric shock or severe injury. When the power cable gets damaged it should only be replaced by the manufacturer or at a TRUPER Authorized Service Center.
The build quality of the electric insulation is altered if spills or liquid gets into the tool while in use. Do not expose to rain, liquids and/or dampness.

WARNING Before gaining access to the terminals all power sources should be disconnected.

Power requirements


WARNING Tools with double insulation and reinforced insulation are equipped with a polarized plug (one prong is wider than the other). This plug will only fit in the right way into a polarized outlet. If the plug cannot be introduced into the outlet, reverse the plug. If it still doesn't fit, call a qualified electrician to install for you a polarized outlet. Do not alter the plug in any way. Both insulation types eliminate the need of both a grounded third power cord with three prongs or a grounded power connection.



WARNING When using an extension cable, verify the gauge is enough for the power that your product needs. A lower gauge cable will cause voltage drop in the line, resulting in power loss and overheating. The following table shows the right size to use depending on cable's length and the ampere capability shown in the tool's nameplate. When in doubt use the next higher gauge.

Ampere Capacity	Number of Conductors	Extension gauge	
		from 5.91' to 49.2'	higher than 49.2'
from 0 A and up to 10 A	3 (one grounded)	18 AWG(*)	16 AWG
from 10 A and up to 13 A		16 AWG	14 AWG
from 13 A and up to 15 A		14 AWG	12 AWG
from 15 A and up to 20 A		8 AWG	6 AWG

- It is safe to use only if the extensions have a built-in artifact for over current protection.
- AWG = American Wire Gauge. Reference: NMX-J-195-ANCE

WARNING When operating power tools outdoors, use a  grounded extension cable labeled "For Outdoors Use". These extensions are especially designed for operating outdoors and reduce the risk of electric shock.

General power tool safety warnings

WARNING! Read carefully all safety warnings and instructions listed below. Failure to comply with any of these warnings may result in electric shock, fire and / or severe damage. Save all warnings and instructions for future references.

Work area

- Keep your work area clean, and well lit.
Cluttered and dark areas may cause accidents.
- Never use the tool in explosive atmospheres, such as in the presence of flammable liquids, gases or dust.
Sparks generated by power tools may ignite the flammable material.
- Keep children and bystanders at a safe distance while operating the tool.
Distractions may cause losing control.

Electrical safety

The tool plug must match the power outlet. Never modify the plug in any way. Do not use any adapter plugs with grounded power tools.

- Modified plugs and different power outlets increase the risk of electric shock.
Avoid body contact with grounded surfaces, such as pipes, radiators, electric ranges and refrigerators.
- The risk of electric shock increases if your body is grounded.
Do not expose the tool to rain or wet conditions.
- Water entering into the tool increases the risk of electric shock.
Do not force the cord. Never use the cord to carry, lift or unplug the tool. Keep the cord away from heat, oil, sharp edges or moving parts.
- Damaged or entangled cords increase the risk of electric shock.
When operating a tool outdoors, use an extension cord suitable for outdoor use.
- Using an adequate outdoor extension cord reduces the risk of electric shock.
If operating the tool in a damp location cannot be avoided, use a ground fault circuit interrupter (GFCI) protected supply.
Using a GFCI reduces the risk of electric shock.

Personal safety

- Stay alert, watch what you are doing and use common sense when operating a tool. Do not use a power tool while you are tired or under the influence of drugs, alcohol or medication.
A moment of distraction while operating the tool may result in personal injury.
- Use personal protective equipment. Always wear eye protection.
Protective equipment such as safety glasses, anti-dust mask, non-skid shoes, hard hats and hearing protection used in the right conditions significantly reduce personal injury.



- Prevent unintentional starting up. Ensure the switch is in the “OFF” position before connecting into the power source and / or battery as well as when carrying the tool.
Transporting power tools with the finger on the switch or connecting power tools with the switch in the “ON” position may cause accidents.
- Remove any wrench or vice before turning the power tool on.
Wrenches or vices left attached to rotating parts of the tool may result in personal injury.
- Do not overreach. Keep proper footing and balance at all times.
This enables a better control on the tool during unexpected situations.
- Dress properly. Do not wear loose clothing or jewelry. Keep hair, clothes and gloves away from the moving parts.
Loose clothes, jewelry or long hair may get caught in moving parts.
- If you have dust extraction and recollection devices connected onto the tool, inspect their connections and use them correctly.
Using these devices reduce dust-related risks.

Power tools use and care

- Do not force the tool. Use the adequate tool for your application.
The correct tool delivers a better and safer job at the rate for which it was designed.
- Do not use the tool if the switch is not working properly.
Any power tool that cannot be turned ON or OFF is dangerous and should be repaired before operating.
- Disconnect the tool from the power source and / or battery before making any adjustments, changing accessories or storing.
These measures reduce the risk of accidentally starting the tool.
- Store tools out of the reach of children. Do not allow persons that are not familiar with the tool or its instructions to operate the tool.
Power tools are dangerous in the hands of untrained users.
- Service the tool. Check the mobile parts are not misaligned or stuck. There should not be broken parts or other conditions that may affect its operation. Repair any damage before using the tool.
Most accidents are caused due to poor maintenance to the tools.
- Keep the cutting accessories sharp and clean.
Cutting accessories in good working conditions are less likely to bind and are easier to control.

- Use the tool, components and accessories in accordance with these instructions and the projected way to use it for the type of tool when in adequate working conditions.

Using the tool for applications different from those it was designed for, could result in a hazardous situation.

Service

Repair the tool in a TRUPER Authorized Service Center using only identical spare parts.
This will ensure that the safety of the power tool is maintained.

Use and care of the battery-operated tool

- Recharge only with the charger specified by TRUPER.

A charger that is suitable for one type of battery pack may create a risk of fire when used with another battery pack.

- Use power tools only with specifically designated battery packs.

Use of any other battery packs may create a risk of injury and fire.

- Batteries should be kept away from any metallic object such as paper clips, coins, keys, nails, screws or any other object that could cause the terminals to make contact.

A short circuit that could cause burns or fire.

- Under extreme conditions, battery fluid may leak. If so, avoid any contact. If accidental contact occurs, wash with abundant water and look for medical help immediately.

The liquid expelled from the batteries could cause irradiation or burns.

Service

Tools should only be serviced at a TRUPER Authorized Service Center using only identical spare parts.
To maintain the safety of the tool



This tool is in compliance with the Official Mexican Standard
(NOM – Norma Oficial Mexicana).

Safety warnings for Jig saws

Batteries and charger

DANGER

Use only **PRETUL** chargers to charge the tool battery. Using any other charger may result in fire or risk of injury.

DANGER

Use only batteries specifically designed for the tool. Other batteries may create a risk of fire or explosion.

DANGER

Connect the charger to an alternating current (AC) supply only.

DANGER

- Do not use the charger outdoors.

- Watch polarity “+/-” when charging.
- Never recharge a leaking battery.
- Do not use batteries or the charger for purposes other than those for which they were designed.
- Do not modify the contacts of the battery or the charger.
- Do not expose the batteries to temperatures above 122 °C.

DANGER

Never expose batteries to fire, they could explode

CAUTION

Batteries should be kept away from any metallic object such as paper clips, coins, keys, nails, screws or any other object that could cause the terminals to make contact, since it would cause a short circuit that could cause burns or fire.

CAUTION

Under extreme conditions, battery fluid may leak. If so, avoid any contact. If accidental contact occurs, wash with abundant water, rinse with lemon juice and vinegar. If the liquid enters in contact with the eyes, wash with abundant water during several minutes and look for medical help immediately. The liquid expelled from the batteries could cause irradiation or burns.

CAUTION

- To maximize battery life, fully discharge the battery at least once a month. Do not leave the battery uncharged for more than three months. Always charge the battery to its maximum capacity. Before using the machine for the first time, charge the battery for a minimum of 55 minutes.
- Avoid stopping constantly while operating the tool to prevent damage to the battery.

Warning of laser radiation

• WARNING

Laser class 2. Do not look directly into the laser beam or the opening from which it emerges. Never point the laser beam at people, animals or reflective surfaces. Even brief eye contact can lead to eye damage.

• WARNING

Examining the laser output aperture by use of optical instruments (e.g. magnifying glass, magnifiers and the like) entails the risk of eye damage.

• CAUTION

When working with a laser of class 2, observe the national regulations on wearing eye protection.

Before operating the jig saw

• CAUTION

Double-check wall, floors, and ceilings to prevent making contact with power wires and / or pipes.

• CAUTION

Before starting to cut verify there are no nails or screws along the cutting line.

• CAUTION

Use only undamaged saw blades that are in perfect condition. Bent or dull saw blades can break, negatively influence the cut, or lead to kickback.

- **CAUTION**

Clamp and secure the work piece if possible to prevent it from moving.

- **CAUTION**

This jig saw is intended for manual use. Do not fix it.

When operating the jig saw

CAUTION

- Hold the tool by the insulated gripping parts when there is risk of making contact with hidden wiring or the tools cable. Contact with “live” wiring will electrify the exposed metal parts of the tool and send an electric shock to the operator.
- Use a bench vice or other practical way to support and secure the work piece onto a firm platform. Holding the work piece with your hand against your body makes it unstable and could cause losing control.

WARNING

Keep your hands away from the cutting area. Do not overreach over the material to be cut. The distance of your hand with the blade is out of sight.

WARNING

- Never stop the blade by applying force on its side.
- When operating the jig saw always assure it is firmly held.
- When operating the jig saw sit it firmly against the material. It reduces vibration, stops the tool from jumping or breaking the blade.

After operating the jig saw

- **WARNING**

Metal parts and accessories may get very hot if the tool is used for long periods of time.

- **CAUTION**

Do not brake the saw blade to a stop by applying side pressure after switching off. The saw blade can be damaged, break or cause kickback.

- **CAUTION**

Always wait until the machine has come to complete stop before placing it down. The tool insert can jam and lead to loss of control over the power tool.

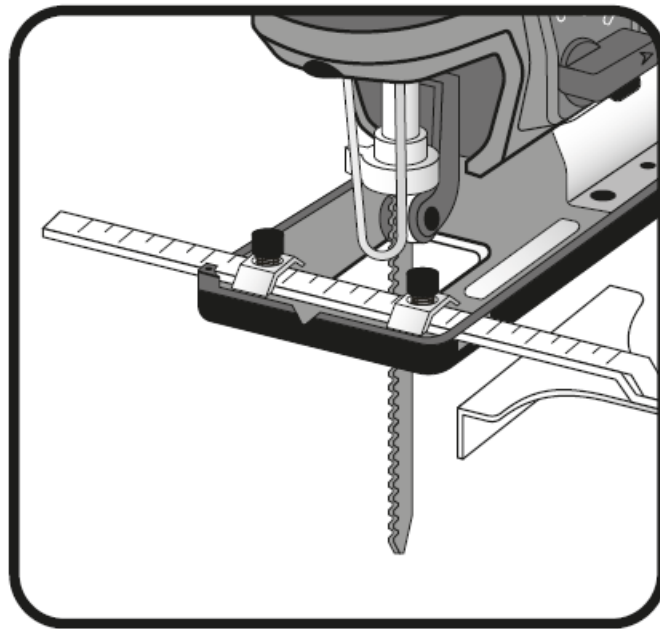
- **WARNING**

Remove the Jig saw from the work piece only when it stops moving.

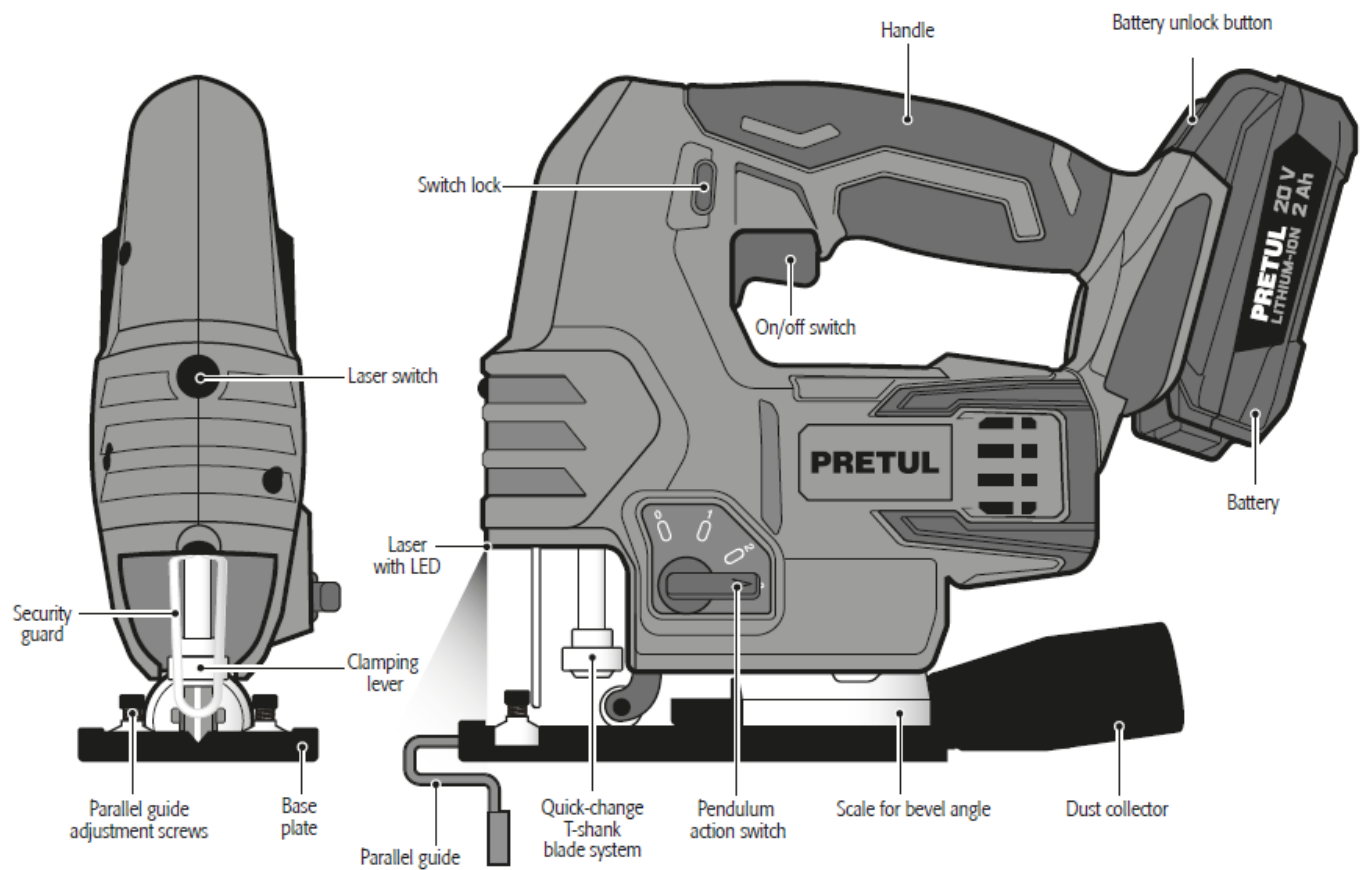
Safety warnings for Jig saws

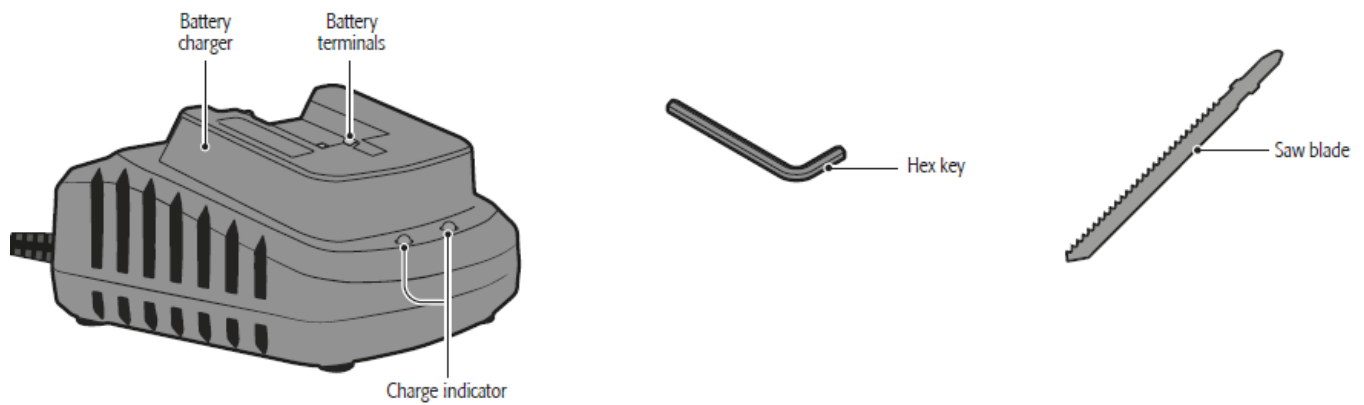
Replacing the saw blade

CAUTION Wear gloves when installing the saw blade to avoid the risk of injury from contact with the blade. • Use only saw blades that match the specifications provided in the operating instructions.



Parts





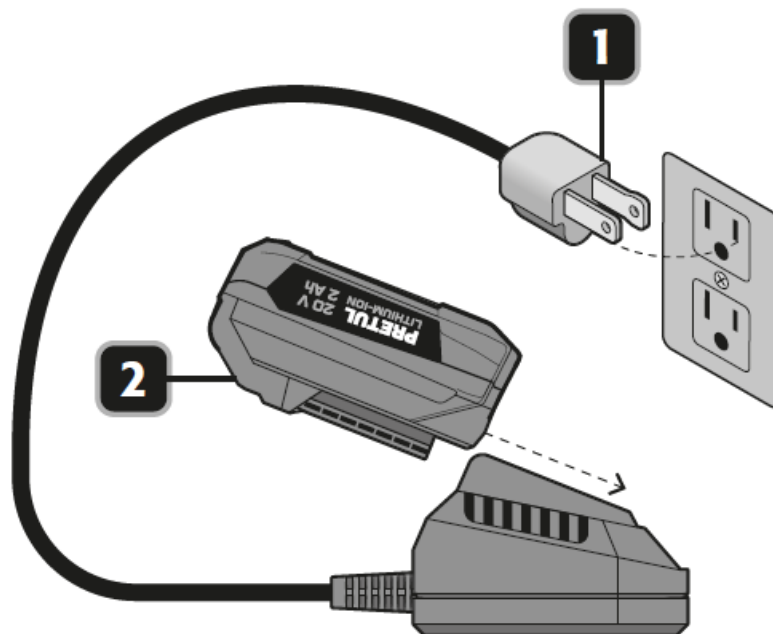
Start up

Considerations for battery use

- The battery is shipped in a discharged state from the factory. It needs to be charged for approximately 55 minutes before it can be used.
- Charging should take place within a normal temperature range of 0 °C to 45 °C; if the temperature is outside this range, charging will automatically pause until the correct temperature is reached. The standard operating temperature during discharge is 0 °C to 75 °C. If the temperature exceeds 75 °C, the electronic control will cut off power to the tool until the temperature returns to the optimal range. If the temperature falls below the normal voltage during operation, the tool will cease functioning.
- Allow a 15-minute break for the charger between each charging cycle. In warm environments or after extended use, the battery may become too hot for recharging. Allow the battery to cool before attempting to recharge it.

Battery charging

1. Plug the charger into a 127 V~ power outlet (The charge indicator's green light will illuminate).
2. Slide the battery into the charger. The green light will go off, and the red light should illuminate, indicating the start of charging. Additionally, the battery level indicator will flash in a sequence of red-orange-green.
3. Once the battery is fully charged, the green light will illuminate again, and the red light will turn off.
4. Unplug the charger once the charging is complete.



BATTERY FAULTS

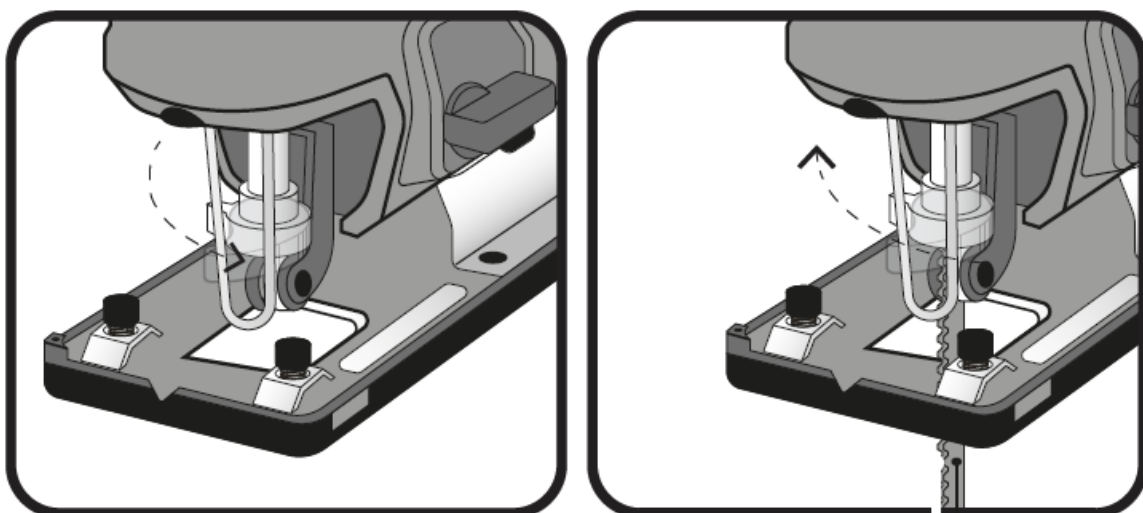
If the green LED stays on, and the battery's red LED flashes due to overheating, wait until the battery temperature is within the appropriate range before charging.

Installation of the saw blade

Installation of the saw blade

WARNING Make sure the blade holder is free of material debris (such as splinters of wood or metal).

- Turn the clamping lever as far to the left as possible and hold it in this position. • Insert the saw blade in the chuck. Check that the saw blade is securely fixed and that the teeth are pointing in the cutting direction.
- Let go of the clamping lever. Check whether the back of the saw blade is positioned in the center of the guide roller.



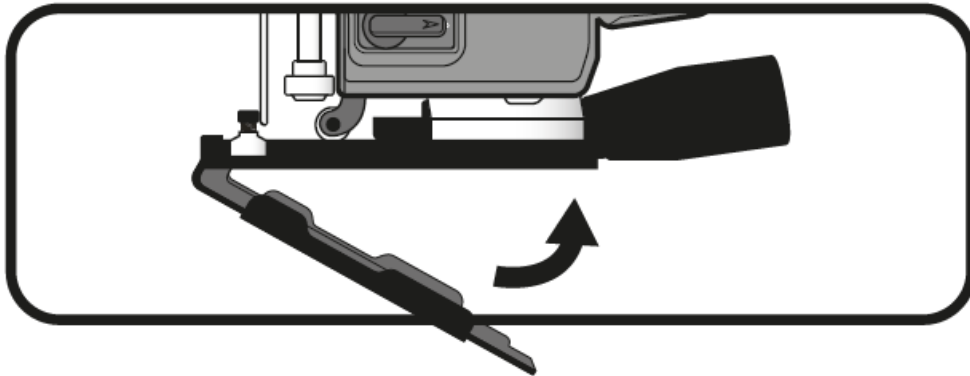
We recommend using a TRUPER Brand "T" type shank blade.

WARNING

- Make sure to use the right sawblade for the corresponding material. Included with the machine is a coarse sawblade for wood.
- To remove the saw blade, turn the clamping lever as far to the left as possible and hold it in this position. Remove the saw blade from the chuck. Let go of the clamping lever.

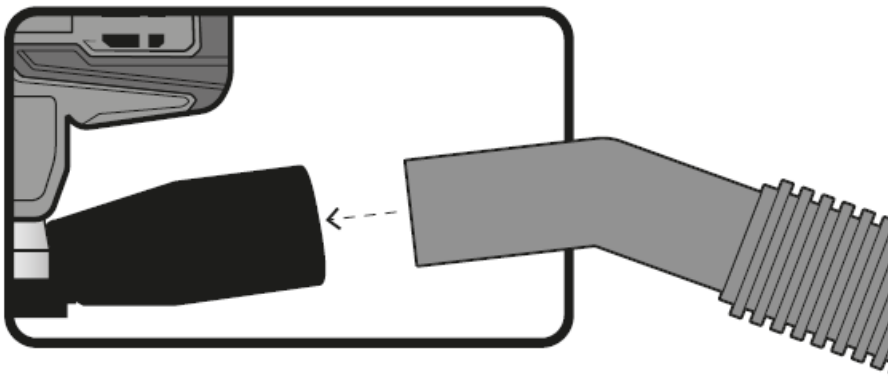
Plastic base protector

The tool comes with a protective cover for the base plate to safeguard delicate surfaces. To install it, attach the protector to the front of the base plate and then press it toward the back until you hear a clicking sound.



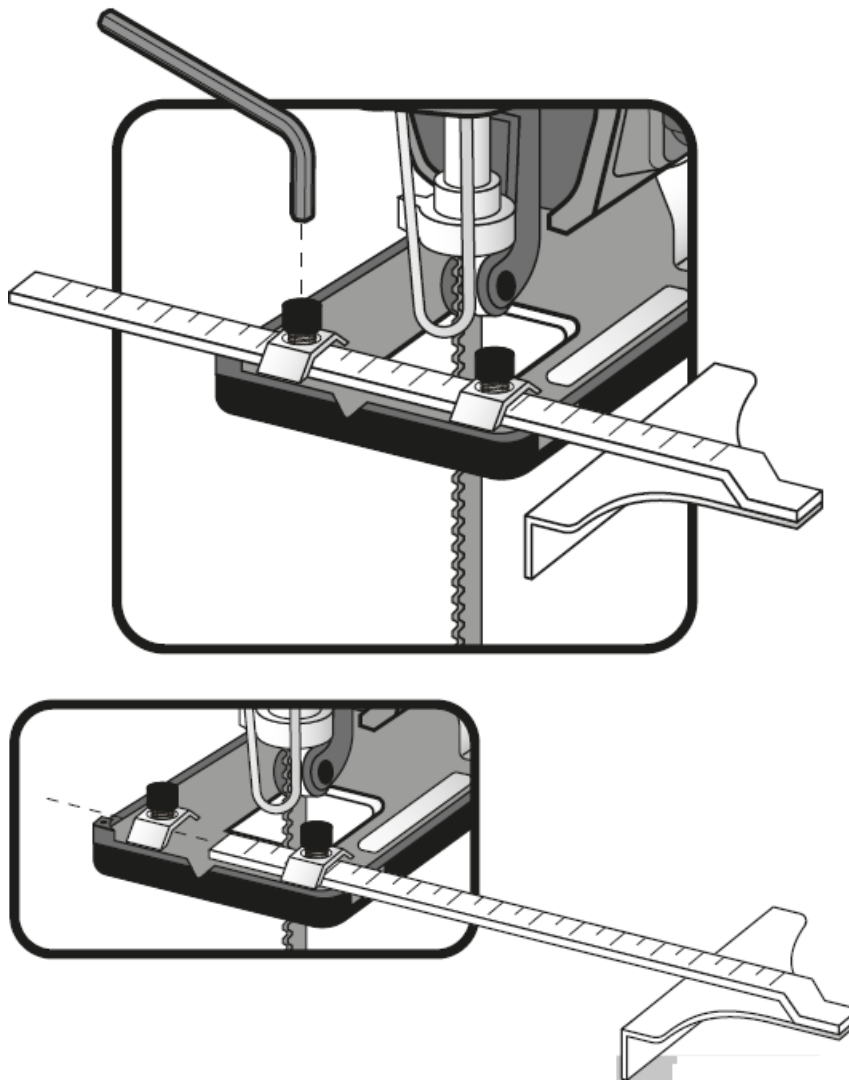
Vacuuming particles

Connect a vacuum cleaner to the tool using the vacuum cleaner connection to vacuum clean dust, saw dust or any particle from the work piece.



Parallel guide installation

- Loose the Allen screws.
- Mount the parallel guide on to the base plate.
- Set the desired cutting width using the scale on the parallel guide and the cutting mark on the base plate. The cutting mark indicates the position of the saw blade.
- Tighten the Allen screws.



Start and operation control

- Press and hold the switch lock (B) to unlock the switch (A). The switch lock prevents accidental switching on.
- Press the switch (A) for the tool to start operating.
- To stop the tool, release the switch (A).
- Press the laser switch (C) to turn it on or off.
- This switch also turns on the LED work light.

Variable speed

The switch allows you to choose the appropriate speed for each task. The tighter you press the switch, the faster the saw will operate.

Adjust the cutting angle

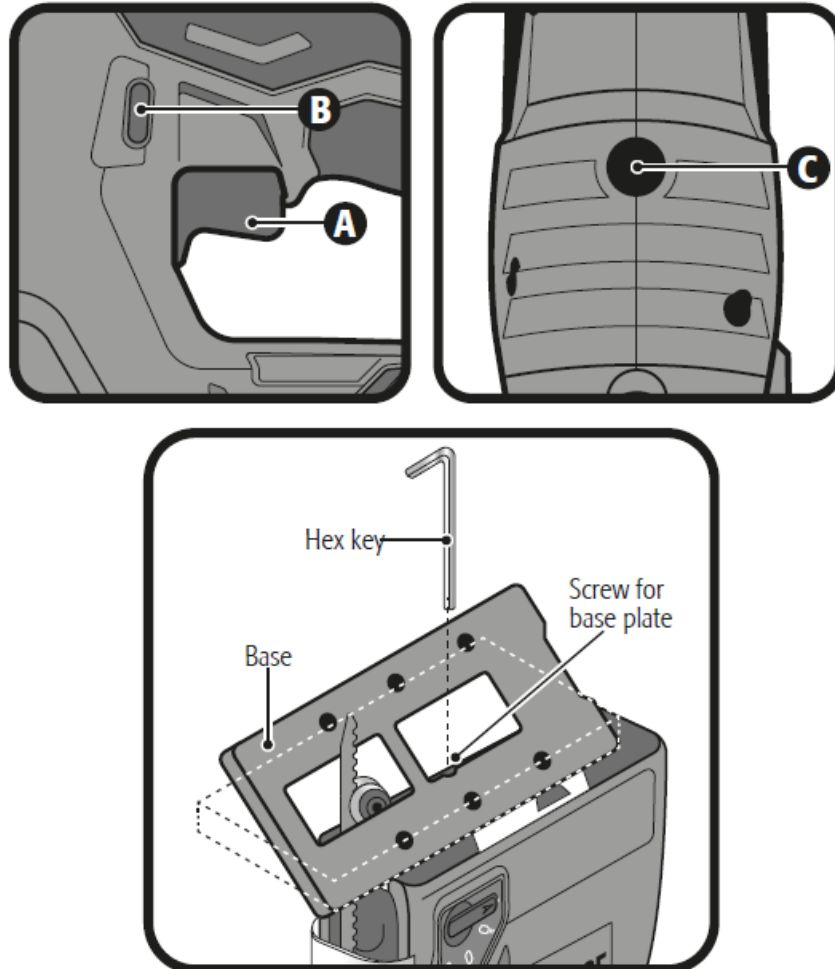
- Loose the Allen screws using the included hex key.
- Adjust the baseplate to the desired position (0°- 45°).
- The sawing angle (bevel) can be read on the scale.
- Tighten the bolt, using the hex key. It is impossible to store the hex key onto the machine.

Adjusting the pendulum action

The pendulum movement changes the cutting angle of the jigsaw, enhancing cutting efficiency. It should be

adjusted with the jigsaw unloaded. The pendulum action switch can be set to 4 positions:

- **0** – No pendulum action
- **I** – Small pendulum action
- **II** – Medium pendulum action
- **III** – Large pendulum action

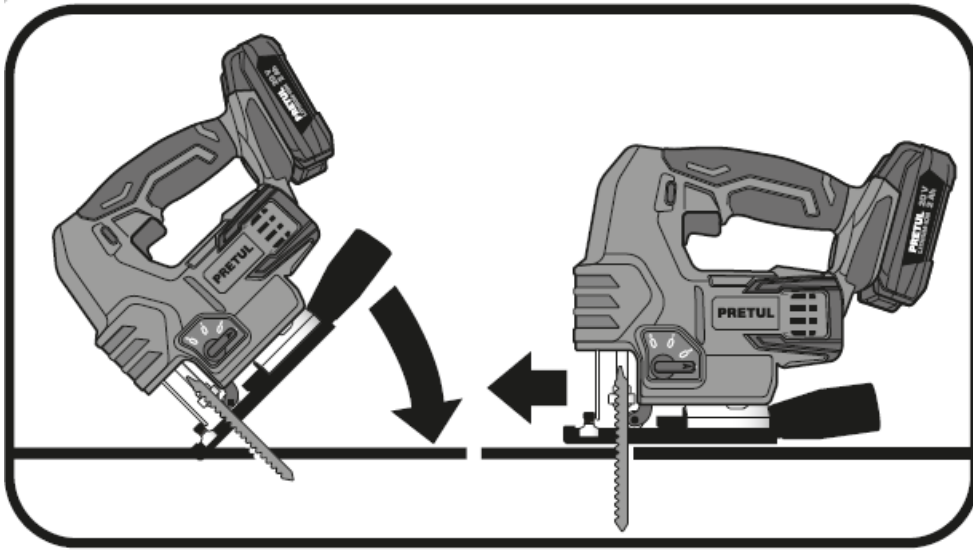


- Soft material (wood, plastics etc.): set the pendulum to level II or III.
- For a finer and cleaner saw cut, use pendulum level 0 or I.
- Thin material, use pendulum level 0.
- Hard material (steel etc.): set the pendulum to level 0.
- **Curves:** set pendulum to level 0.

Plunge cutting

WARNING Plunge cutting may only be used on soft materials such as wood, aerated concrete, gypsum plaster boards, etc.

- Place the saw onto the workpiece and switch it on.
- Ensure that the bottom edge of the footplate rests on the workpiece surface.
- Slowly saw into the workpiece at an angle, moving the saw to a vertical position and continue to saw along the cutting line.
- Switch the saw off and lift off the workpiece when the work is complete.



Maintenance

WARNING

Before cleaning and maintenance, always switch off the machine and remove the battery pack from the machine.

Cleaning and care

- Keep the tool free of dust.
- Never use water or chemical-based cleansing materials to clean the tool.
- Clean only using a clean and dry cloth.
- Keep the ventilation slots always clean and free of obstructions to guarantee the right cooling of the motor.
- Double-check the battery regularly to detect any type of damage. Go to a TRUPER Authorized Service Center when damaged to replace the battery.

Service

The tool should only be serviced in a TRUPER Authorized Service Center. Service and maintenance carried out by non qualified people may be dangerous and could cause severe personal injury. It also makes the product Warranty void.

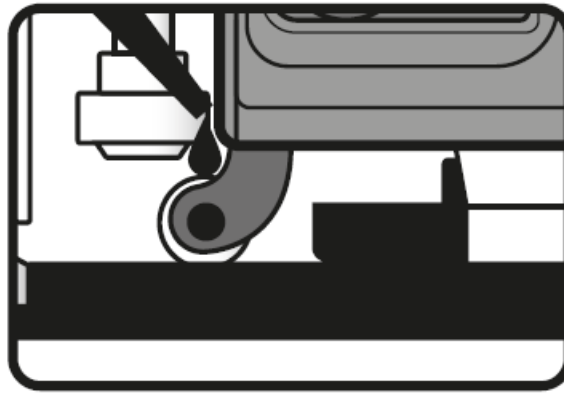
Environmental protection

WARNING

Faulty and/or discarded electrical or electronic apparatus have to be collected at the appropriate recycling locations.

Lubrication

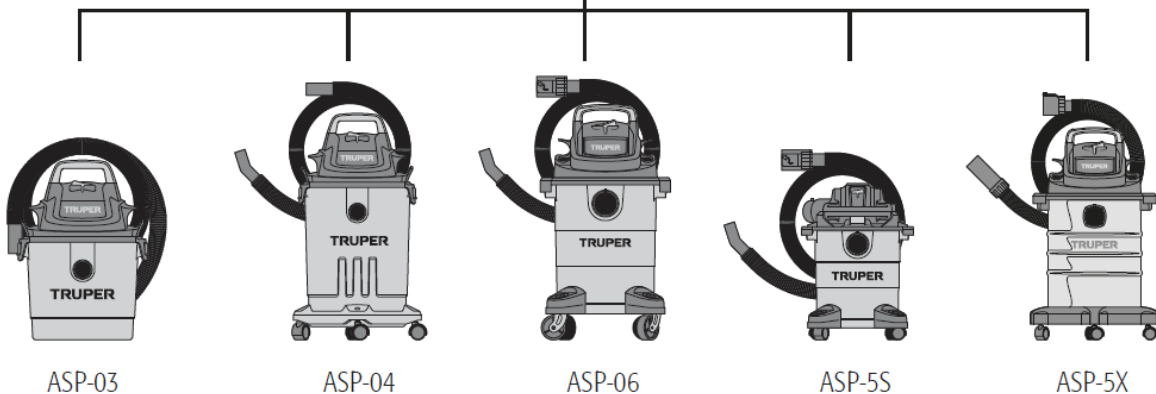
Apply regularly one drop of lubricant to the guide roller to gain an adequate sliding of the saw blade while cutting.



Compatibility with vacuum cleaners



CALI-20P



Troubleshooting

Problem	Cause	Corrective action
The jigsaw loses power.	<ul style="list-style-type: none"> • Low battery. 	<ul style="list-style-type: none"> • Charge the battery.
The trigger cannot be pulled.	<ul style="list-style-type: none"> • The switch safety lock is not engaged. 	<ul style="list-style-type: none"> • Hold down the switch safety lock to activate the power button.
The trigger can be pulled, but the machine does not work.	<ul style="list-style-type: none"> • Battery discharged. 	<ul style="list-style-type: none"> • Charge the battery.
The LED light and laser do not turn on.	<ul style="list-style-type: none"> • Switch is in the off position. 	<ul style="list-style-type: none"> • Press the laser switch to turn it on.
The battery is leaking.	<ul style="list-style-type: none"> • Minor dripping may occur in extreme temperatures or after heavy use. This is normal. 	<ul style="list-style-type: none"> • Immediately clean any liquid from the skin or clothing with soap and water.
The battery does not	<ul style="list-style-type: none"> • Excessive or very evident dripping is due to a damaged battery. 	<ul style="list-style-type: none"> • Replace the battery promptly.

charge, and the charge level indicator light does not turn on.	<ul style="list-style-type: none"> • Charger connection improperly installed on the battery. • Charger improperly plugged into the electrical outlet. 	<ul style="list-style-type: none"> • Insert the battery charger connection correctly. • Ensure that the charger plug is securely connected to the electrical outlet.
The jigsaw heats up after extended periods of work.	<ul style="list-style-type: none"> • The warming is normal as it absorbs the energy generated by the motor gears and electricity during operation. 	<ul style="list-style-type: none"> • Allow it to cool at 5-minute intervals.
The battery heats up during operation.	<ul style="list-style-type: none"> • The warming is normal; the energy drawn from the battery while the tool is in operation causes it to heat up. 	<ul style="list-style-type: none"> • Stop the jigsaw at 5-minute intervals to allow the battery to cool.
The battery heats up while charging.	<ul style="list-style-type: none"> • The warming is normal, a result of the chemical reactions occurring inside the battery during charging. 	
The charger heats up during charging.	<ul style="list-style-type: none"> • This warming is normal, a result of a voltage regulation. 	

Authorized service centers

In the event of any problem contacting a Service Center, please see our webpage WWW.TRUPER.COM to get an updated list, or call our toll-free numbers 800 690-6990 or 800 018-7873 to get information about the nearest TRUPER Authorized Service Center.

AGUASCALIENTES

- GRAL. BARRAGÁN #1201, COL. GREMIAL, C.P. 20030, AGUASCALIENTES, AGS.
- TEL.: 449 994 0537

Warranty policy

Code

28270

Model

CALI-20P

Brand

PRETUL

Warranty. Duration: 1 year. Coverage: parts, components and workmanship against manufacturing or operating defects, except if used under conditions other than normal; when it was not operated in accordance with the instructive; was altered or repaired by personnel not authorized by TRUPER®. To make the warranty valid, present the product, stamped policy or invoice or receipt or voucher, in the establishment where you bought it or in Corregidora 35, Centro, Cuauhtémoc, CDMX, 06060, where you can also purchase parts, components, consumables and accessories. It includes the costs of transportation of the product that derive from its fulfillment of its service network. Phone number 800-018-7873. Made in China. Imported by TRUPER, S.A. de C.V. Parque Industrial 1, Parque Industrial Jilotepec, Jilotepec, Edo. de Méx. C.P. 54257, Phone number 761 782 9100.

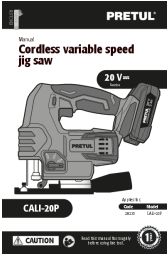


Stamp of the business.

Delivery date

WWW.TRUPER.COM

Documents / Resources

	<p>TRUPER CALI-20P Cordless Variable Speed Jig Saw [pdf] Instruction Manual CALI-20P, 28270, CALI-20P Cordless Variable Speed Jig Saw, CALI-20P, Cordless Variable Speed Jig Saw, Variable Speed Jig Saw, Speed Jig Saw, Jig Saw</p>
--	--

References

- [User Manual](#)

[Manuals+](#), [Privacy Policy](#)

This website is an independent publication and is neither affiliated with nor endorsed by any of the trademark owners. The "Bluetooth®" word mark and logos are registered trademarks owned by Bluetooth SIG, Inc. The "Wi-Fi®" word mark and logos are registered trademarks owned by the Wi-Fi Alliance. Any use of these marks on this website does not imply any affiliation with or endorsement.