



TRUPER 15420 Variable Speed Jig Saw User Manual

[Home](#) » [TRUPER](#) » TRUPER 15420 Variable Speed Jig Saw User Manual 

Contents

- 1 TRUPER 15420 Variable Speed Jig Saw
- 2 Technical data
- 3 Power requirements
- 4 General power tool safety warnings
- 5 Safety warnings for jig saws
 - 5.1 Select the adequate blade
- 6 Parts
- 7 Preparation
- 8 Start up
- 9 Maintenance
- 10 Authorized service centers
- 11 Warranty policy
- 12 Documents / Resources
 - 12.1 References

TRUPER®

TRUPER 15420 Variable Speed Jig Saw



CAUTION


- To gain the best performance of the tool, prolong the duty life, make the Warranty valid if necessary, and to avoid hazards of fatal injuries please read and understand this Manual before using the tool.
- Keep this manual for future references. The illustrations in this manual are for reference only. They might be different from the real tool.

Technical data

Code	•	15420
Description	•	Variable speed jig saw
Voltage	•	127 V~
Frequency	•	60 Hz
Current	•	4.5 A
Power	•	0.7 Hp
Speed	•	0 strokes / min – 3 000 strokes / min (SPM)
Miter cutting	•	0° - 45° left / right
Cutting capacity	•	Wood 2-1/2" Metal 5/16"
Stroke length	•	11/16" (17.5 mm)
Work cycle	•	30 minutes work per 15 minutes rest. Daily maximum, 3 hours.
Conductors	•	18 AWG x 2C with insulating temperature of 221 °F
Insulation	•	Class II
IP Grade	•	IP20

- **Power Cord Grips:** Type Y

- **Build Quality of the jig saw:** Reinforced
- **Thermal Insulation Class on Motor Winding:** Class E

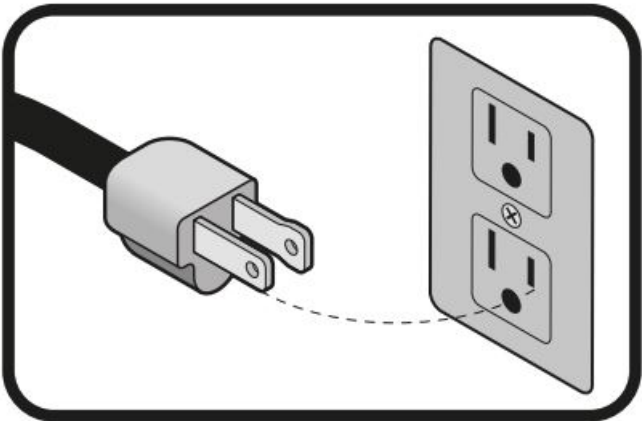
WARNING Avoid the risk of electric shock or severe injury. When the power cable gets damaged it should only be replaced by the manufacturer or at  **TRUPER**® an Authorized Service Center. The build quality of the electric insulation is altered if spills or liquid gets into the tool while in use. Do not expose to rain, liquids, and/or dampness.



WARNING Before gaining access to the terminals all power sources should be disconnected.

Power requirements

- **WARNING** Tools with double insulation and reinforced insulation are equipped with a polarized plug (one prong is wider than the other). This plug will only fit in the right way into a polarized outlet. If the plug cannot be introduced into the outlet, reverse the plug. If it still doesn't fit, call a qualified electrician to install for you a polarized outlet. Do not alter the plug in any way. Both insulation types eliminate the need of a grounded third power cord with three prongs or a grounded power connection.



- **WARNING** When using an extension cable, verify the gauge is enough for the power that your product needs. A lower gauge cable will cause a voltage drop in the line, resulting in power loss and overheating. The following table shows the right size to use depending on cable's length and the ampere capability shown in the tool's nameplate. When in doubt use the next higher gauge.

Ampere Capacity	Number of Conductors	Extension gauge	
		from 6 ft to 49 ft	higher than 49 ft
from 0 A and up to 10 A	3 (one grounded)	18 AWG(*)	16 AWG
from 10 A and up to 13 A		16 AWG	14 AWG
from 13 A and up to 15 A		14 AWG	12 AWG
from 15 A and up to 20 A		8 AWG	6 AWG

It is safe to use only if the extensions have a built-in artifact for over current protection. AWG = American Wire Gauge. Reference: NMX-J-195-ANCE

WARNING When operating power tools outdoors, use a  **VOLTECK** grounded extension cable labeled “For Outdoors Use”. These extensions are specially designed for operating outdoors and reduce the risk of electric shock.

General power tool safety warnings

WARNING! Read carefully all safety warnings and instructions listed below. Failure to comply with any of these warnings may result in electric shock, fire and / or severe damage. Save all warnings and instructions for future references.

Work area

- Keep your work area clean, and well lit. Cluttered and dark areas may cause accidents.
- Never use the tool in explosive atmospheres, such as in the presence of flammable liquids, gases or dust.
Sparks generated by power tools may ignite the flammable material.
- Keep children and bystanders at a safe distance while operating the tool.
- Distractions may cause losing control.

Electrical Safety

- The tool plug must match the power outlet. Never modify the plug in any way. Do not use any adapter plugs with grounded power tools. Modified plugs and different power outlets increase the risk of electric shock.
- Avoid body contact with grounded surfaces, such as pipes, radiators, electric ranges and refrigerators. The risk of electric shock increases if your body is grounded.
- Do not expose the tool to rain or wet conditions. Water entering into the tool increases the risk of electric shock.
- Do not force the cord. Never use the cord to carry, lift or unplug the tool. Keep the cord away from heat, oil, sharp edges or moving parts. Damaged or entangled cords increase the risk of electric shock.
- When operating a tool outdoors, use an extension cord suitable for outdoor use. Using an adequate outdoor extension cord reduces the risk of electric shock.
- If operating the tool in a damp location cannot be avoided, use a ground fault circuit interrupter (GFCI) protected supply. Using a GFCI reduces the risk of electric shock.

Personal safety

- Stay alert, watch what you are doing and use common sense when operating a tool. Do not use a power tool while you are tired or under the influence of drugs, alcohol or medication. A moment of distraction while operating the tool may result in personal injury.
- Use personal protective equipment. Always wear eye protection. Protective equipment such as safety glasses, anti-dust mask, non-skid shoes, hard hats and hearing protection used in the right conditions significantly reduce personal injury.



- Prevent unintentional starting up. Ensure the switch is in the “OFF” position before connecting into the power source and / or battery as well as when carrying the tool. Transporting power tools with the finger on the switch or connecting power tools with the switch in the “ON” position may cause accidents.
- Remove any wrench or vice before turning the power tool on. Wrenches or vices left attached to rotating parts of the tool may result in personal injury.
- Do not overreach. Keep proper footing and balance at all times. This enables a better control on the tool during


unexpected situations.

- Dress properly. Do not wear loose clothing or jewelry. Keep hair, clothes and gloves away from the moving parts. Loose clothes or long hair may get caught in moving parts.
- If you have dust extraction and recollection devices connected to the tool, inspect their connections and use them correctly. Using these devices reduce dust-related risks.

Power Tools Use and Care

- Do not force the tool. Use the adequate tool for your application. The correct tool delivers a better and safer job at the rate for which it was designed.
- Do not use the tool if the switch is not working properly. Any power tool that cannot be turned ON or OFF is dangerous and should be repaired before operating.
- Disconnect the tool from the power source and/or battery before making any adjustments, changing accessories or storing. These measures reduce the risk of accidentally starting the tool.
- Store tools out of the reach of children. Do not allow persons that are not familiar with the tool or its instructions to operate the tool. Power tools are dangerous in the hands of untrained users.
- Service the tool. Check the mobile parts are not misaligned or stuck. There should not be broken parts or other conditions that may affect its operation. Repair any damage before using the tool. Most accidents are caused due to poor maintenance to the tools.
- Keep the cutting accessories sharp and clean. Cutting accessories in good working conditions are less likely to bind and are easier to control.
- Use the tool, components and accessories in accordance with these instructions and the projected way to use it for the type of tool when in adequate working conditions. Using the tool for applications different from those it was designed for, could result in a hazardous situation.

Service

Repair the tool in an  **TRUPER®** Authorized Service Center using only identical spare parts. This will ensure that the safety of the power tool is maintained.

Safety warnings for jig saws

Select the adequate blade

CAUTION

- Select the adequate blade for the material. Reduce the risk of severe personal injury and make the job faster.
- Do not use dull or damaged blades. Bent blades may break easily and could cause kickback.
- Handle blades with care. The teeth are very sharp.

Before operating the jig saw

DANGER

- Double-check wall, floors, and ceilings to prevent making contact with power wires and / or pipes.

CAUTION

- Double-check wall, floors, and ceilings to
- prevent making contact with power wires and / or pipes.

After operating the jig saw

WARNING

- Metal parts and accessories may get very hot if the tool is used for long periods of time.

CAUTION

- Remove the jig saw from the work piece only when it stops moving.

While operating the jig saw

CAUTION

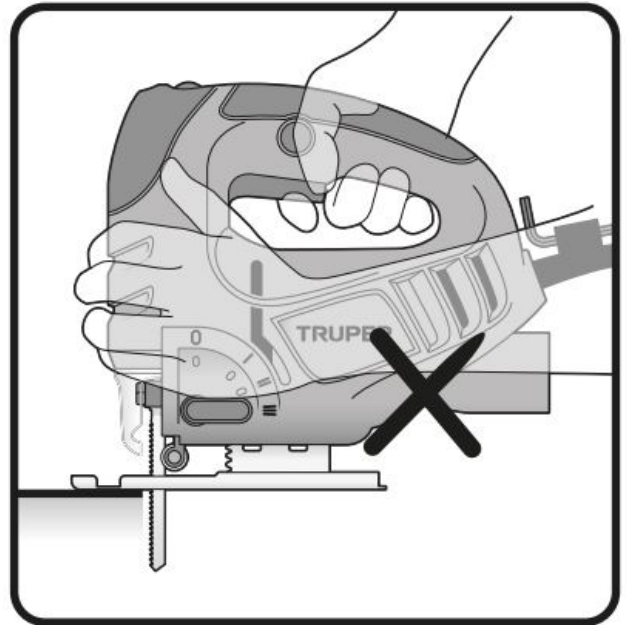
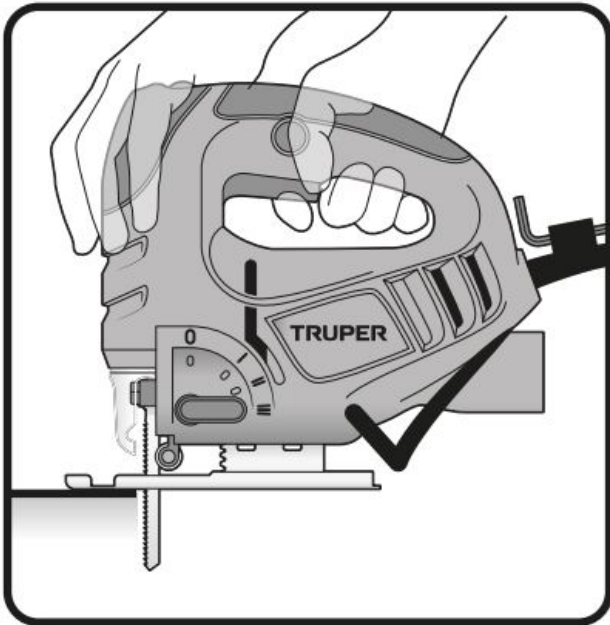
- Hold the tool by the insulated gripping parts when there is risk of making contact with hidden wiring or the tools cable. Contact with “live” wiring will electrify the exposed metal parts of the tool and send an electric shock to the operator.
- Use a bench vice or other practical way to support and secure the work piece onto a firm platform. Holding the work piece with your hand against your body makes it unstable and could cause losing control.

WARNING

- Keep your hands away from the cutting area. Do not overreach over the material to be cut. The distance of your hand with the blade is out of sight.

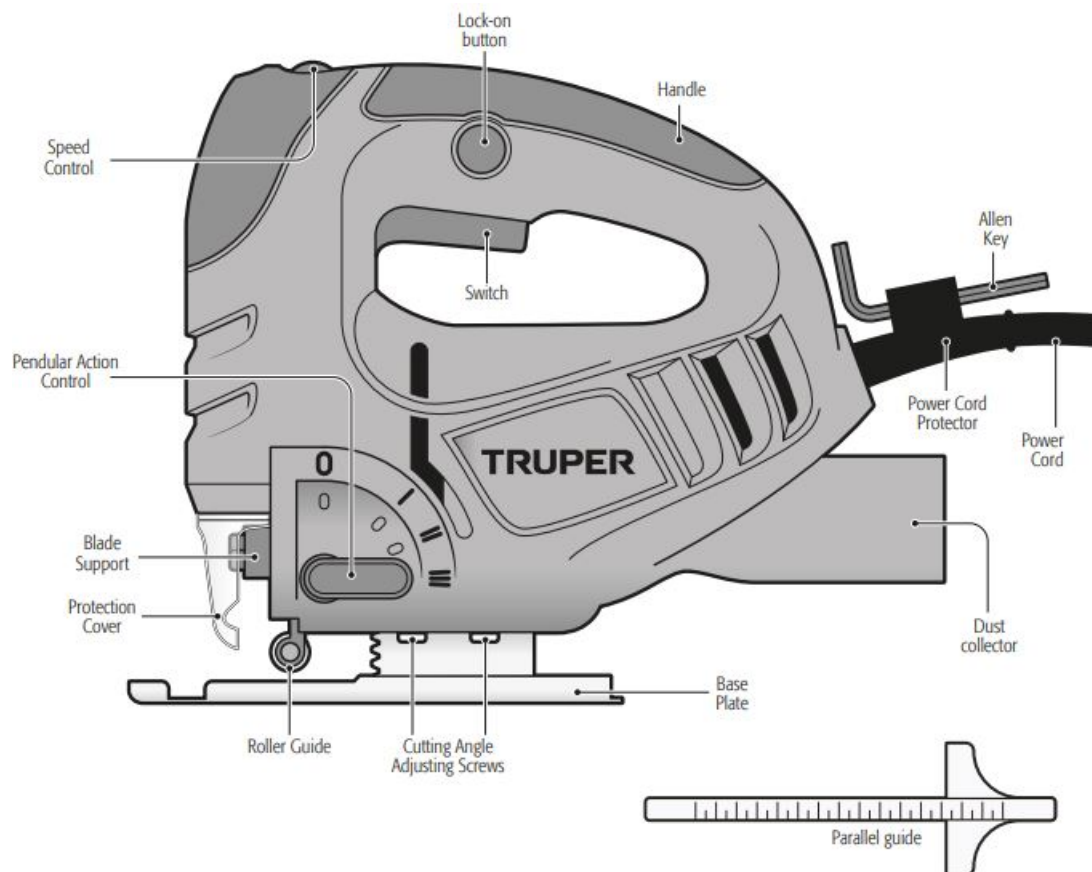
CAUTION

- Never stop the blade by applying force on its side.
- When operating the jig saw always assure it is firmly held.
- When operating the jig saw sit it firmly against the material. It reduces vibration, stops the tool from jumping or breaking the blade.



- right way to hold the jig saw
- wrong way to hold the jig saw

Parts

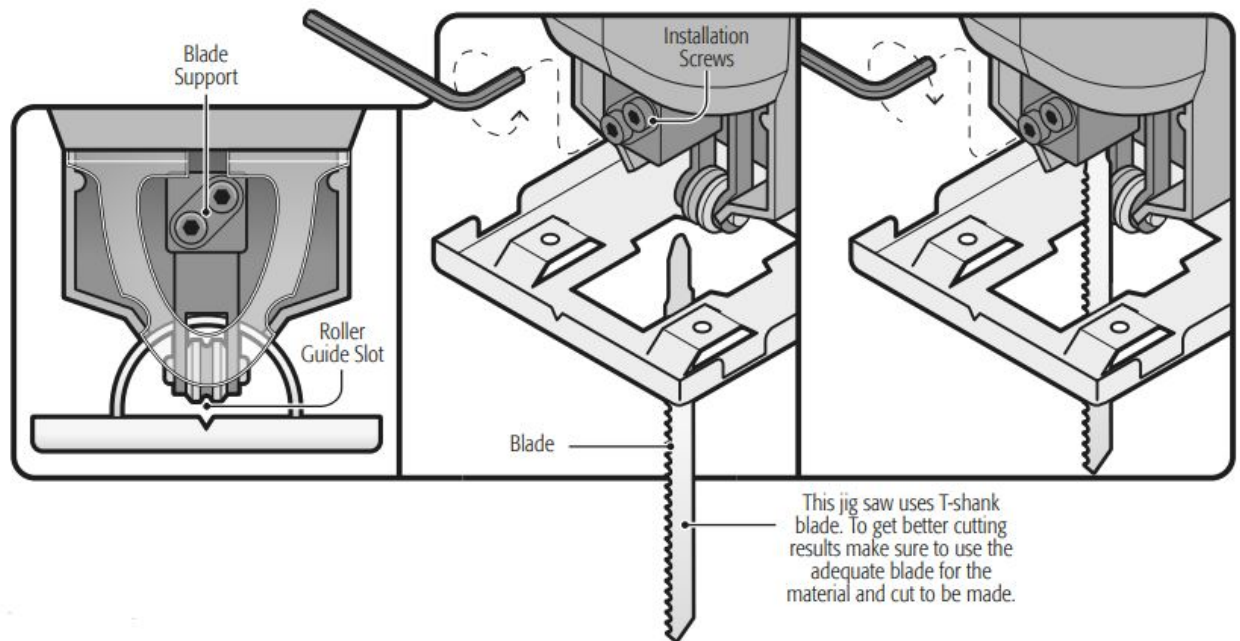


Preparation

Blade installation

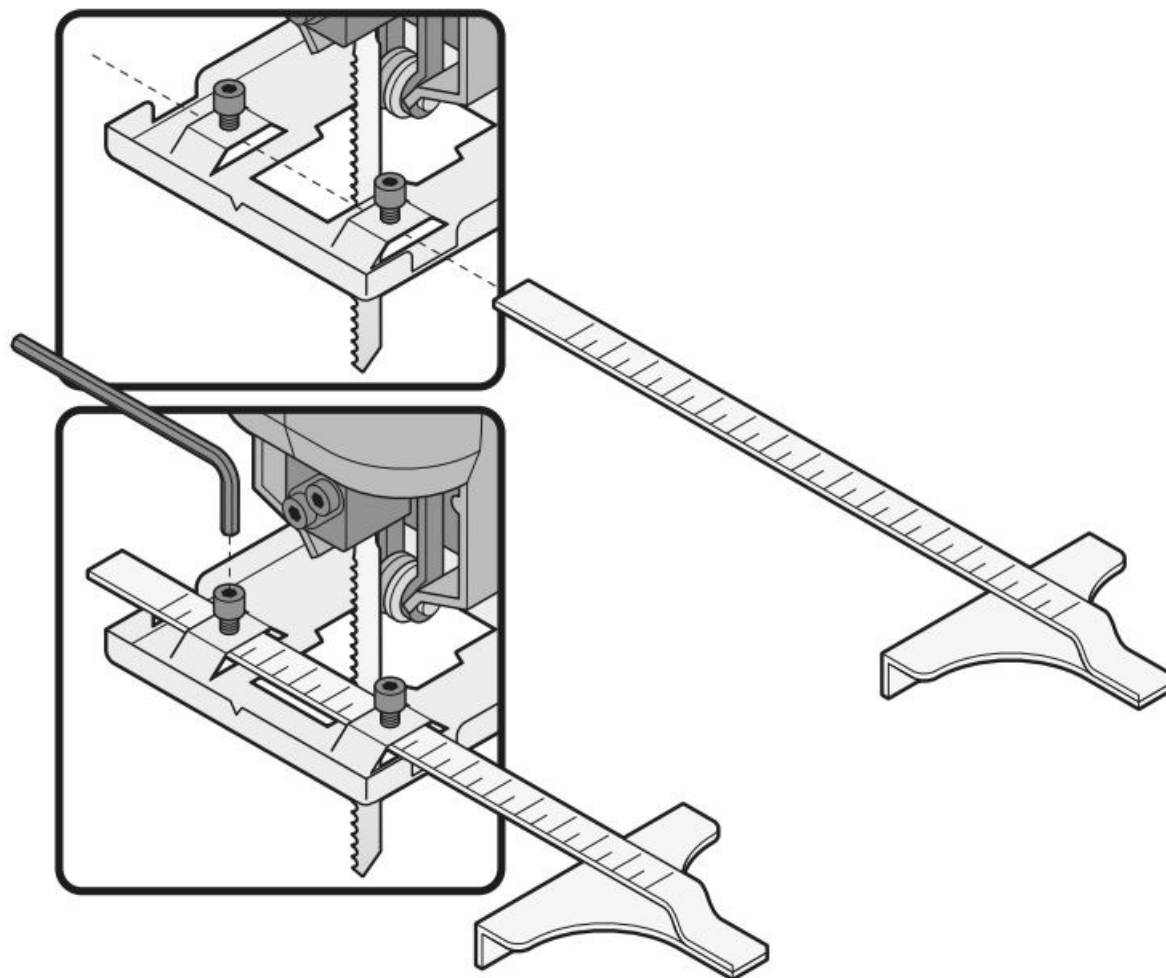
- The opening of the blade support shall be free of sawdust.
- Loosen the installation screws with the Allen key (including).

- Insert the blade all the way into the blade support. The backside of the blade shall fit into the roller guide slot.
- Tighten firmly the installation screws. Vibration and blade use might get the screws run loose. Check the blade regularly; if loose tighten the installation screws.



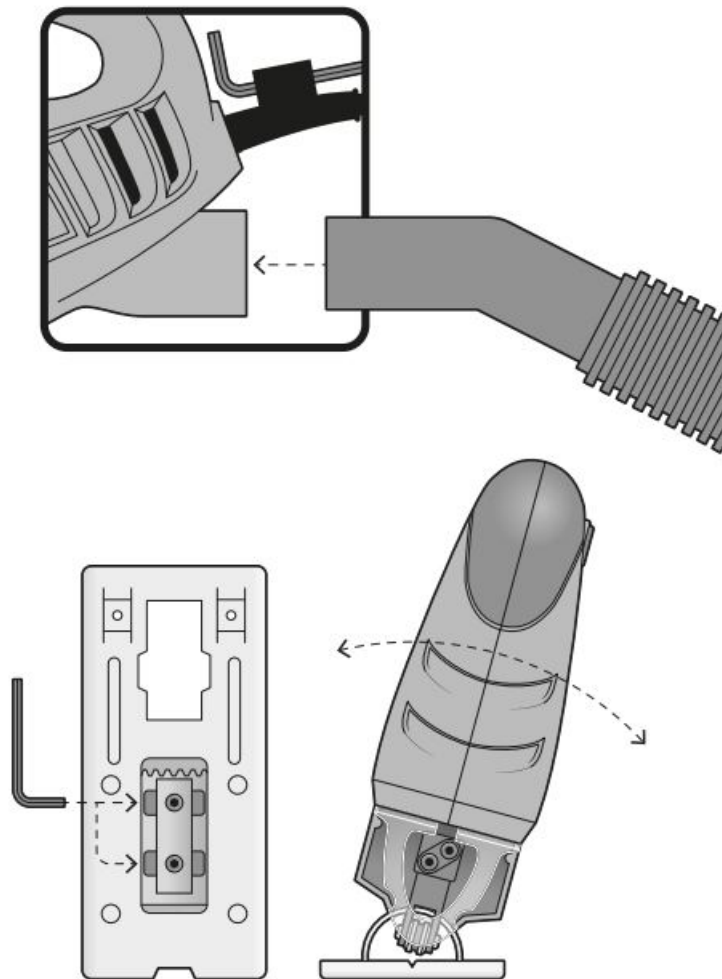
Parallel guide installation

- Loosen the fixing screws with the Hex key (included) and insert the parallel guide through the base of the guide.
- Set the width of the desired cut according to the scale on the inside of the base.
- Tighten the fixing screw.



Extraction dust hose

- Connect the extraction hose to the dust extraction port of the machine with an internal diameter of 1 3/8" (35 mm) (not compatible with Truper brand vacuums).
- Connect the dust extraction hose to a dust extractor or vacuum cleaner.



Adjusting the cutting angle

- Disconnect the unit from the power source.
- Loosen the 2 screws on the base plate with the Allen key included.
- When the screws are loosened, adjust the base plate into the desired angle using the serrated guide in the base plate.
- Tighten the screws back.
- Set the Allen key back in its holder in the power cable protector immediately after use.

Start up

Start up and operation control

- Intermittent Operation: Connect the plug to the electrical outlet. Press the switch (A) to start the jig saw operating. To interrupt its use, simply release the switch.
- Continuous Operation: Connect the plug to the electrical outlet. Press the switch (A) and lock it by pressing the continuous use button (B). To interrupt its operation, press and then release the switch.

Swinging action control (C)

Swinging action varies the blade cutting angle to increase the cutting efficiency. It shall be adjusted with the jig saw unloaded. Do not apply excessive force on the blade when cutting with the swinging action. The blade cuts only upwards.

Precise, smooth
and clean cut.

Coarse cut and with
splinters.

Increased
cutting speed

0

I

II

III



Material Hard

Soft

Steel, stainless
steel,
aluminum,
plastic, wood
and plywood.

Steel, stainless
steel,
aluminum,
plastic, wood
and plywood.

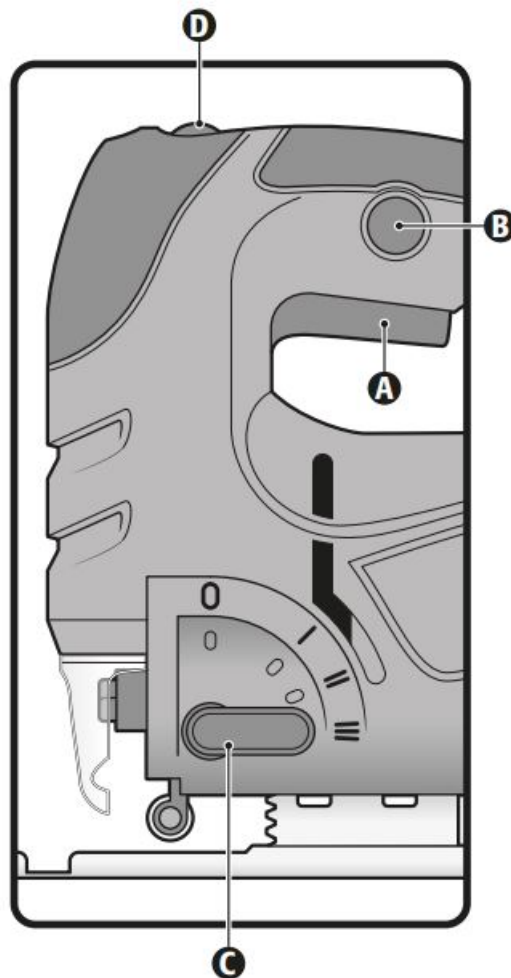
Aluminum,
plastic, wood
and plywood

Wood and
plywood

Cut

**Straight
and curved**

Straight only



Speed control

- The tool can be operated at different speeds. These are selected by adjusting the speed control (D) located on

the top of the tool.

- The number of coats required depends on the material and working conditions, and it is advisable to determine it by testing. It is advisable to reduce the number of strokes when applying the saw blade while it is in operation against the workpiece, as well as when sawing plastic and aluminum.
- Refer to the speed guide to select the appropriate one for the job to be done.

WARNING

- When working for an extended period of time with a limited number of blades, the power tool may heat up strongly. Remove the saw blade and let the power tool run for about 3 minutes at maximum speed to allow it to cool down.

Speed guide

Application Speed

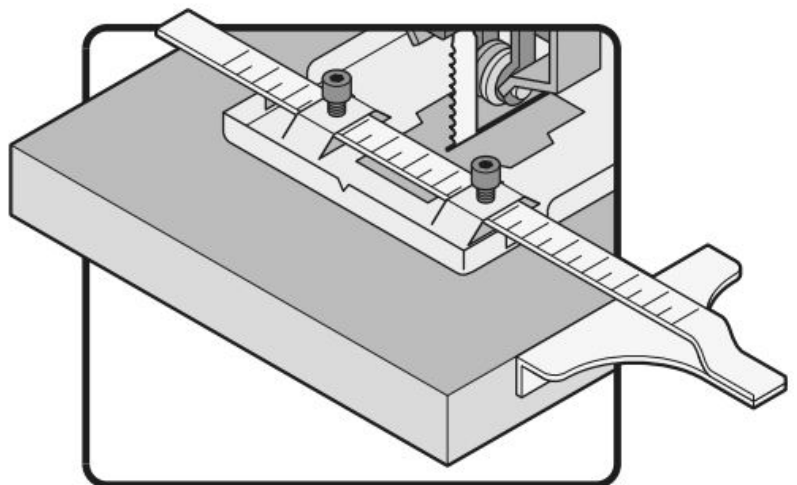
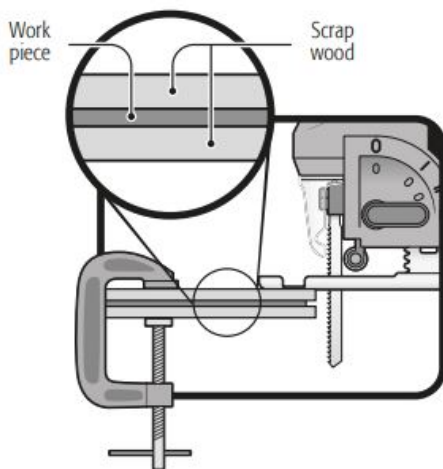
- **Closed curves** 1-2
- **Curves cut** 3-4
- **Standard cut** 4-5
- **Fast cut** 5

Cut wood sheets

- When cutting most wood sheets or very thin wood use a blade with fine teeth. Reduce splinters in the edges.
- Clamp scrap pieces of wood onto both faces of the work piece and start cutting.

CAUTION

- Do not use the balancing action when cutting much closed circles or angles.



Straight cut

- To make more accurate straight cuts, use the parallel guide provided with the tool by resting it against the edge

of the workpiece.

- The parallel guide is inserted through the slots on the saw's shoe. To adjust the width, loosen the Allen head screws and move the parallel guide to the desired position.
- Straight cuts can also be made with a good finish by cutting slowly along a previously marked cutting line.

Circular cut


- Circular cuts can also get a fine finish if cutting slowly over a line previously marked similar to the straight cut. With a circular guide (not included) the jig saw can make perfect circular cuts.

Maintenance


WARNING

Disconnect the tool from the power source before making adjustments, service or maintenance to the jig saw.



Cleaning and care

- Keep the tool free of dust. Never use water or chemical-based cleansing materials. Clean only using a clean and dry cloth.
- Keep the ventilation slots always clean and free of obstructions to guarantee the right cooling of the motor.
- Check the feeding cable regularly to look for any damages. In case the cable is damaged change it in a  **TRUPER**® Authorized service center.

Service

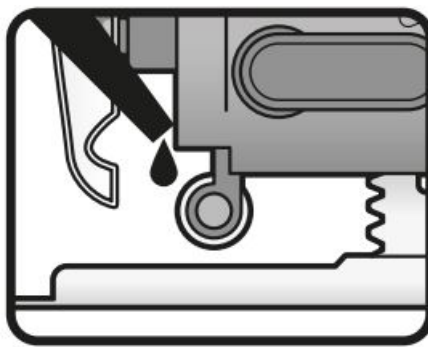
- The tool shall only be serviced in a  **TRUPER**® Authorized service center. Service and maintenance carried out by non-qualified people may be dangerous and could cause severe personal injury. It also makes the product warranty void.

Carbon brush replacement

- Carbon brushes need to be checked regularly and when worn, replaced in a  **TRUPER**® Authorized Service Center. After the carbons have been replaced, ask the technician to inspect if they run freely in the carbon housing and to let run the machine 5 minutes to make even contact of the carbon and commutator.
- Use only  **TRUPER**® original spare carbon brushes, designed specifically with the strength and electric resistance fit for each type of motor. Carbon brushes that are out of specification may damage the motor.
- When replacing carbon brushes always change both pieces.

Lubrication

- Regularly apply a drop of lubricant to the roller guide for proper blade slippage when cutting.



Authorized service centers

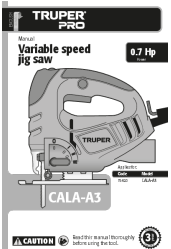
In the event of any problem contacting a Truper Authorized Service Center, please see our webpage www.truper.com to get an updated list, or call our toll-free numbers 800 690-6990 or 800-018-7873 to get information about the nearest Service Center.

Warranty policy

Warranty. Duration: 3 year. Coverage: parts, components and workmanship against manufacturing or operating defects, except if used under conditions other than normal; when it was not operated in accordance with the instructive; was altered or repaired by personnel not authorized by Truper®. To make the warranty valid, present the product, stamped policy or invoice or receipt, or voucher, in the establishment where you bought it or in Corregidora 35, Centro, Cuauhtémoc, CDMX, 06060, where you can also purchase parts, components, consumables and accessories. It includes the costs of transportation of the product that derives from the fulfillment of its service network. Phone number 800-018-7873. Made in China. Imported by Truper, S.A. de C.V. Parque Industrial 1, Parque Industrial Jilotepec, Jilotepec, Edo. de Méx. C.P. 54257, Phone number 761 782 9100.

- Stamp of the business. Delivery date:
- www.truper.com
- **NAYARIT**
 - HERRAMIENTAS DE TEPIC MAZATLAN #117, COL. CENTRO, C.P. 63000, TEPIC, NAY. TEL.: 311 258 0540

Documents / Resources

	<p>TRUPER 15420 Variable Speed Jig Saw [pdf] User Manual 15420 Variable Speed Jig Saw, 15420, Variable Speed Jig Saw, Speed Jig Saw, Jig Saw, Saw</p>
---	--

References

-  [Truper® - Es mucha herramienta](#)