



Tru-Test XRS2 Stick Reader User Guide

[Home](#) » [Tru-Test](#) » Tru-Test XRS2 Stick Reader User Guide 

Contents

- [1 Tru-Test XRS2 Stick Reader](#)
- [2 Setting up the stick reader for offspring pairing](#)
- [3 Recording offspring pairs](#)
- [4 Recording other information](#)
- [5 Reviewing offspring pairing information](#)
- [6 Fixing errors](#)
- [7 Documents / Resources](#)
- [8 Related Posts](#)

TRU-TEST®

Tru-Test XRS2 Stick Reader



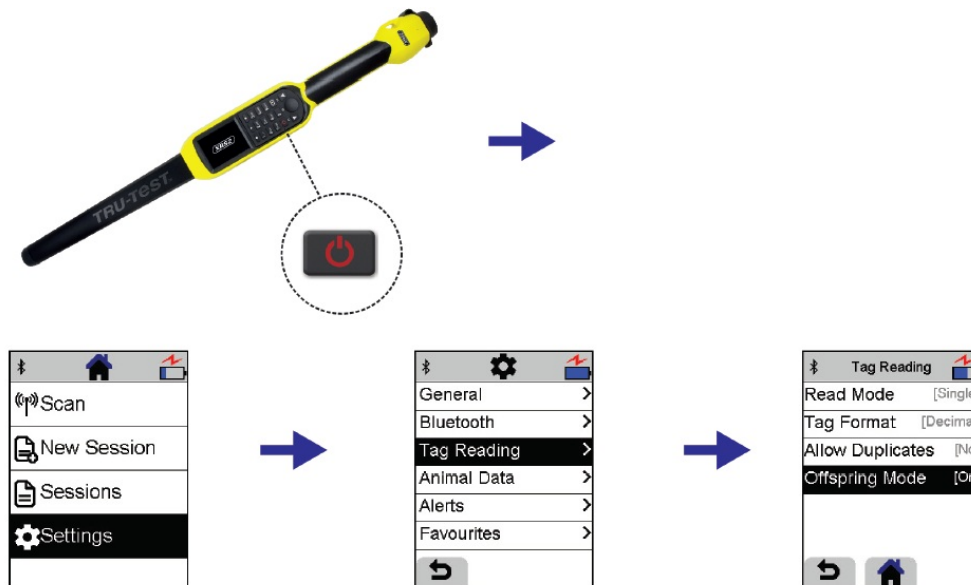
Offspring pairing with the XRS2 Stick Reader enables you to link a dam with her offspring so that you can look

up breeding histories. At the time of recording offspring, you can also record other information such as an animal's date of birth or breed.

Offspring pairing information can only be recorded for animals with EID tags.

Setting up the stick reader for offspring pairing

1. Press to switch on the stick reader.
2. Press and select Settings.
3. Select Tag Reading.
4. Enable Offspring Mode.



Before you begin scanning offspring pairs, you may like to pre-load animal lifetime information such as a file contain EID/VID pairs. This will mean that when you scan an EID tag, the animal's VID number will automatically be displayed more information on how to do this, see the XRS2 Stick Reader Quickstart Guide.


Recording offspring pairs

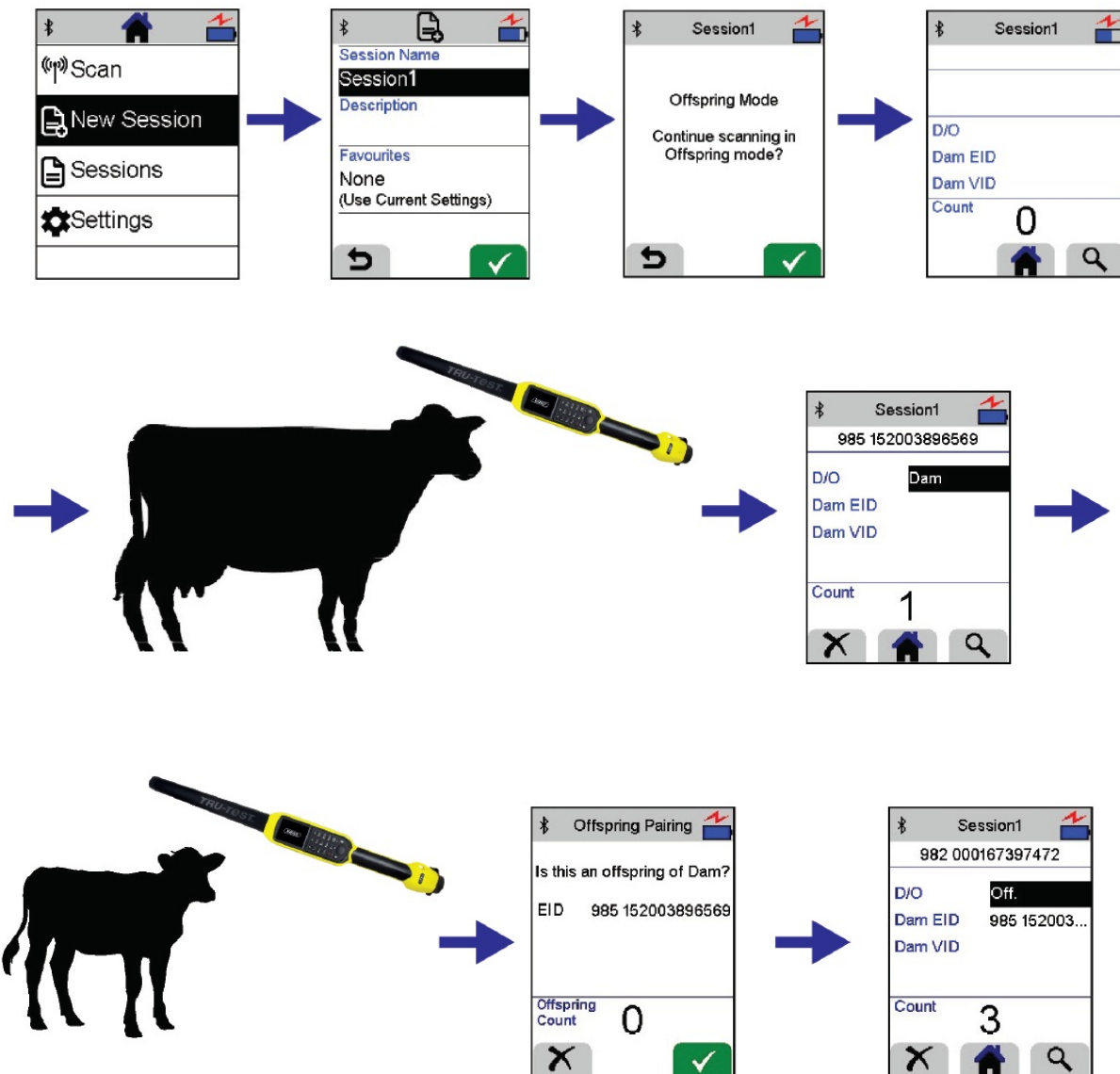
When recording dams and their offspring, you must scan animals in a particular order. The Dam must always be scanned first, followed immediately by her offspring. Here is an example scanning sequence:



1. Scan the first Dam (Dam 1).
2. Scan both of her offspring (Offspring 1 and Offspring 2 of Dam 1)
3. Scan the next Dam (Dam 2).
4. Scan her offspring (Offspring 1 of Dam 2) etc.

To start a new session file and record offspring pairs:

1. On the Home screen, press and select New Session.
2. If desired, change the session name using the keypad and press
3. Press to confirm that you want to scan in Offspring mode. The Scanning screen contains extra fields especially for offspring pairing.


4. Scan the EID of the first Dam by pressing the Read button while holding the stick reader near its EID. The EID is recorded and the screen displays 'Dam'.
5. Scan the EID of the Dam's offspring.
6. Press  to confirm that the animal is the offspring of the Dam you recorded previously.
The EID is recorded and the screen displays 'Off' (Offspring) and the EID of the Dam.



Scan the next animal's EID. If the animal is another offspring of the same Dam, confirm this by pressing . If it is not offspring but a new Dam, press .

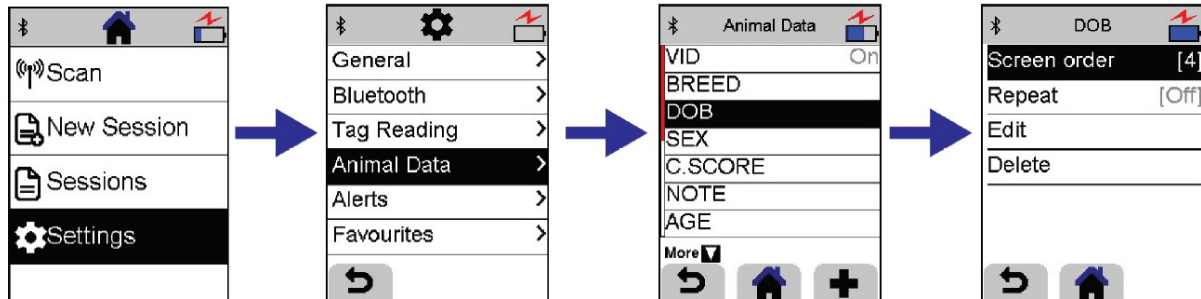
Recording other information

You can record additional information during scanning by adding animal data fields to the Scanning screen. For example, you might want to record information such as the DOB (date of birth) or the breed of the offspring. To add animal data fields to the Scanning screen:

1. On the Home screen, press  and select Settings.
2. Select Animal Data.
3. Select a field you want to display on the Scanning screen (e.g. DOB).
4. Select a number for the Screen Order. This sets the order in which fields will be displayed on the Scanning

screen.

- Repeat steps 3 and 4 for any additional animal data fields you want to be displayed on the Scanning screen. When Offspring Mode is enabled, any extra animal data fields will appear after the three default fields (D/O, Dam EID and Dam VID). This means that the first available position for an animal data field is 4. If you previously set up an extra ID field before enabling Offspring Pairing mode, this ID field will appear with Dam details on the Scanning screen. In this case, the first available position for an animal data field is 5.



To record offspring pairs when you also have animal data fields on the Scanning screen:

- Follow the instructions for recording offspring pairs (see page 2), but as soon as you have scanned an EID tag, press to scroll to the animal data field. Enter data using the keypad.
- Scroll to the next animal data field (if you have added more than one animal data field to the Scanning screen) and enter data in it.
- Scan the EID tag of the next animal and proceed as usual.

Reviewing offspring pairing information

You can view the offspring pairing information you have recorded by opening up the session on the stick reader. To view a recorded session:

- On the Home screen, select Sessions.
- Scroll to the session containing offspring pairing information you have recorded and select it.

The EID tags of all animals recorded in the session are displayed.

- Select an EID to view details of the individual animal.

The following fields are displayed:

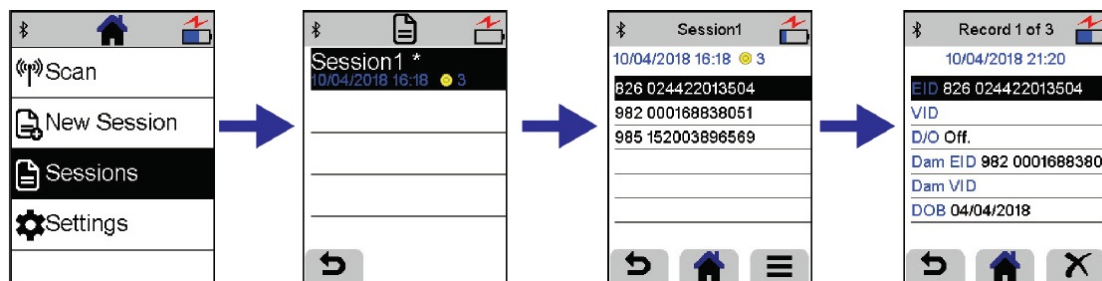
The date and time the animal was scanned.

The animal's EID (and VID if you included this as an animal data field when setting up the Scanning screen)

D/O = Dam or Off (Offspring)

Dam EID (and Dam VID if applicable)

Any other animal data fields you included when you set up the scanning screen.



Getting information off the device

You can transfer the data you have recorded to your PC using Data Link for PC or to the Data Link app for mobile devices. For more information, see the XRS2 Stick Reader Quickstart Guide.

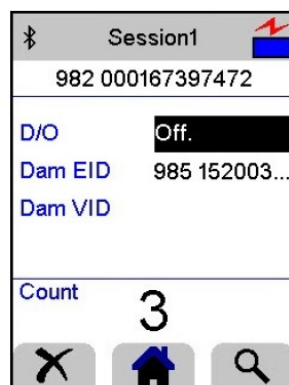
Fixing errors

If you make a mistake during scanning, you can easily fix the error on the stick reader before transferring the data. Examples of mistakes that can occur:

- As you are scanning animals, you realize that your animals have got out of sequence.
- You realize that you have recorded offspring against the wrong dam.
- You realize that you have recorded a dam as offspring.

Fixing an error during scanning:

1. In the Scanning screen, as soon as you have scanned the EID tag, you can delete that record by pressing .
2. Press to confirm.



Fixing an error in the session file after scanning

You need to find the record containing the error, delete that record and scan the animal again. If you have assigned dam and offspring incorrectly, we recommend that you delete the records of both the dam and its offspring and re-scan them again.

1. On the Home screen, select Sessions.
2. Scroll to the session containing the error and select it.
The EID tags of all animals recorded in the session are displayed.
3. Select the EID with the mistake in it.




4. Press
5. Press to confirm that you want to delete the record.
6. Re-scan the EID tags in the correct order (dam, followed by offspring) as required.

The screenshot shows a mobile application interface with a grey header bar. On the left is a Bluetooth icon, in the center is the text 'Record 1 of 3', and on the right is a battery icon with a red lightning bolt. Below the header, the date and time '10/04/2018 21:20' are displayed in blue. A black bar contains the text 'EID 826 024422013504' in white. Below this, the text 'VID' is in blue. A line separates 'VID' from 'D/O Off.', which is also in blue. Another line separates 'D/O Off.' from 'Dam EID 982 00016883805', which is in blue. A line separates 'Dam EID' from 'Dam VID', which is in blue. A line separates 'Dam VID' from 'DOB 04/04/2018', which is in blue. At the bottom, there are three grey buttons with icons: a back arrow, a house, and a close 'X'.

For further information regarding your stock management system, contact Datamars Ltd on 0800 878 837 (NZ), 1800 621 324 (AU), 800 874 8494 (US), 028 2076 8696 (UK). For technical support, contact 0800 AGDATA (0800 243 282) (NZ), 1800 248 774 (AU), 800 433 3112 (US), 028 2076 8696 (UK).

© Datamars Limited, 2018-2021. All rights reserved. Issue 2 02/2021

Documents / Resources

 <p>SETUP GUIDE: XRS2 STICK READER Tru-Test DATAWARES</p> <p>Offspring pairing</p> <p>Setting up the stick reader for offspring pairing</p> <ol style="list-style-type: none">1. Turn on the stick reader.2. Connect the stick reader to the computer.3. Install the software. <p>1</p>	<p>Tru-Test XRS2 Stick Reader [pdf] User Guide XRS2, Stick Reader, XRS2 Stick Reader</p>
 <p>SETUP GUIDE: XRS2 STICK READER Tru-Test DATAWARES</p> <p>Setting up alerts</p> <p>Alerts can be set up for the following events:</p> <ul style="list-style-type: none">1. When the stick reader is connected to the computer.2. When the stick reader is disconnected from the computer.3. When the stick reader is powered on.4. When the stick reader is powered off. <p>Alerts can be set up for the following events:</p> <ul style="list-style-type: none">1. When the stick reader is connected to the computer.2. When the stick reader is disconnected from the computer.3. When the stick reader is powered on.4. When the stick reader is powered off. <p>1</p>	<p>Tru-Test XRS2 Stick Reader [pdf] User Guide XRS2i, XRS2, Stick Reader, XRS2 Stick Reader, Reader</p>
 <p>SETUP GUIDE: XRS2 STICK READER Tru-Test DATAWARES</p> <p>Offspring pairing</p> <p>Setting up the stick reader for offspring pairing</p> <ol style="list-style-type: none">1. Turn on the stick reader.2. Connect the stick reader to the computer.3. Install the software. <p>1</p>	<p>Tru-Test XRS2 Stick Reader [pdf] User Guide XRS2, Stick Reader, XRS2 Stick Reader, Reader, XRS2i</p>