



TROX VSD50-1-LT Combination Diffuser Instructions

[Home](#) » [TROX](#) » TROX VSD50-1-LT Combination Diffuser Instructions 

Contents

- [1 TROX VSD50-1-LT Combination Diffuser](#)
- [2 Product Information](#)
- [3 Product Usage Instructions](#)
- [4 Product Overview](#)
- [5 Product Introduction](#)
- [6 PRODUCT DESCRIPTION](#)
- [7 Technology](#)
- [8 Documents / Resources](#)
 - [8.1 References](#)



TROX VSD50-1-LT Combination Diffuser



Product Information

• Specifications

- Product Name: VSD 50-1-LT
- Product Type: Adjustable Slot Diffuser
- Installation: Lightweight partition walls (100 mm)
- Design: Rectangular
- Dimensions: L: 550 mm, W: 70 mm

• Product Description

- The VSD 50-1-LT is an adjustable slot diffuser designed specifically for use in lightweight partition walls.
- Its compact design allows for complete integration into drywall construction, making it an ideal choice for space-saving installations.
- The diffuser is available in both supply and extract air configurations, offering flexibility in its usage.

• Technology

- The VSD 50-1-LT utilizes a rectangular slot design to distribute air effectively.
- It features a plenum box with integrated cross-talk sound attenuation and a side entry spigot.
- The diffuser face has end angles at both ends and can be easily fixed using clip fixings, making installation quick and convenient.

Product Usage Instructions

• Installation

- Identify the desired location for the VSD 50-1-LT on the lightweight partition wall.
- Ensure that the wall is suitable for installation and meets the required dimensions (100 mm).
- Prepare the wall by creating an appropriate opening for the diffuser.
- Insert the plenum box into the opening, ensuring a secure fit.
- Connect the side entry spigot to the air supply or extraction system.
- Secure the diffuser face onto the plenum box using clip fixings.

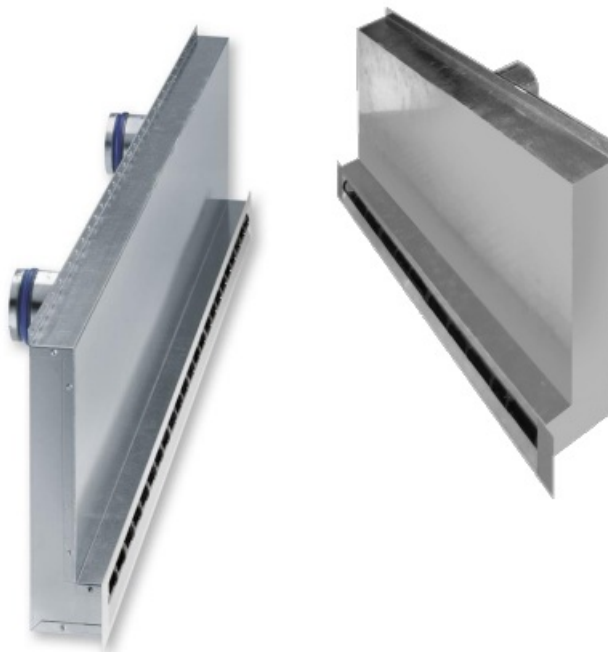
• Adjustment

- The VSD 50-1-LT allows for easy adjustment of the airflow. To adjust the airflow, follow these steps:
- Locate the adjustable slot on the diffuser face.
- Use a screwdriver or similar tool to rotate the adjustment mechanism.
- Rotate clockwise to decrease airflow or counterclockwise to increase airflow.
- Make small adjustments and observe the impact on airflow until the desired level is achieved.

• Frequently Asked Questions (FAQ)

- **Q:** Can the VSD 50-1-LT be used in walls other than lightweight partition walls?
- **A:** No, the VSD 50-1-LT is specifically designed for use in lightweight partition walls with a thickness of 100 mm. Using it in other types of walls may result in improper installation and performance.
- **Q:** Is the VSD 50-1-LT suitable for both supply and extract air?
- **A:** Yes, the VSD 50-1-LT is available in both supply and extract air configurations, making it suitable for various ventilation systems.
- **Q:** How do I clean the VSD 50-1-LT?
- **A:** Regular cleaning of the diffuser face can be done by wiping it with a damp cloth. Ensure that the diffuser is turned off and not connected to any power source before cleaning.

Product Overview



Product Introduction

VSD50-1-LT

- The extraordinarily space-saving TROX combination diffuser VSD50-1-LT with integrated cross-talk sound attenuator can be installed into lightweight partition walls.
- It is also available as a combined supply and extract air configuration.

PRODUCT DESCRIPTION


- The adjustable slot diffuser type VSD50-1-LT is designed for use in lightweight partition walls (100 mm).
- The design and dimensions are suitable for use in a drywall construction and allow complete integration of the slots into a lightweight partition.
- The units are available as simple slot diffusers for either supplying or extracting air and as dual-function slot diffusers for both supplying and extracting air.
- Each unit consists of a plenum box, which includes integrated cross-talk sound attenuation a side entry spigot, and a single slot diffuser face configuration.
- The diffuser face has end angles at both ends and can be a second fix item using clip fixings.

Technology

Rectangular

- **14** – 55 l/s
- **50** – 200 m³/h
- **30** – 118 cfm
 - **L:** 550 and 1,175 mm
 - **W:** 70 mm

Documents / Resources

	<p>TROX VSD50-1-LT Combination Diffuser [pdf] Instructions VSD 50-1-LT, vsd-50-1-lt, VSD50-1-LT, VSD50-1-LT Combination Diffuser, Combination Diffuser , Diffuser</p>
---	---

References

- [Изделия | ТРОКС Австрия ООД Представителство в България](#)
- [VSD 50-1-LT | ТРОКС Австрия ООД Представителство в България](#)
- [Contact | ТРОКС Австрия ООД Представителство в България](#)
- [Информация | ТРОКС Австрия ООД Представителство в България](#)
- [General Terms and Conditions of Supply and Payment TROX Austria GmbH | ТРОКС Австрия ООД](#)

[Представителство в България](#)

- [X privacy | ТРОКС Австрия ООД Представителство в България](#)
- [User Manual](#)

[Manuals+](#), [Privacy Policy](#)