

TROX VSD50-1-LT Adjustable Slot Diffuser Instructions

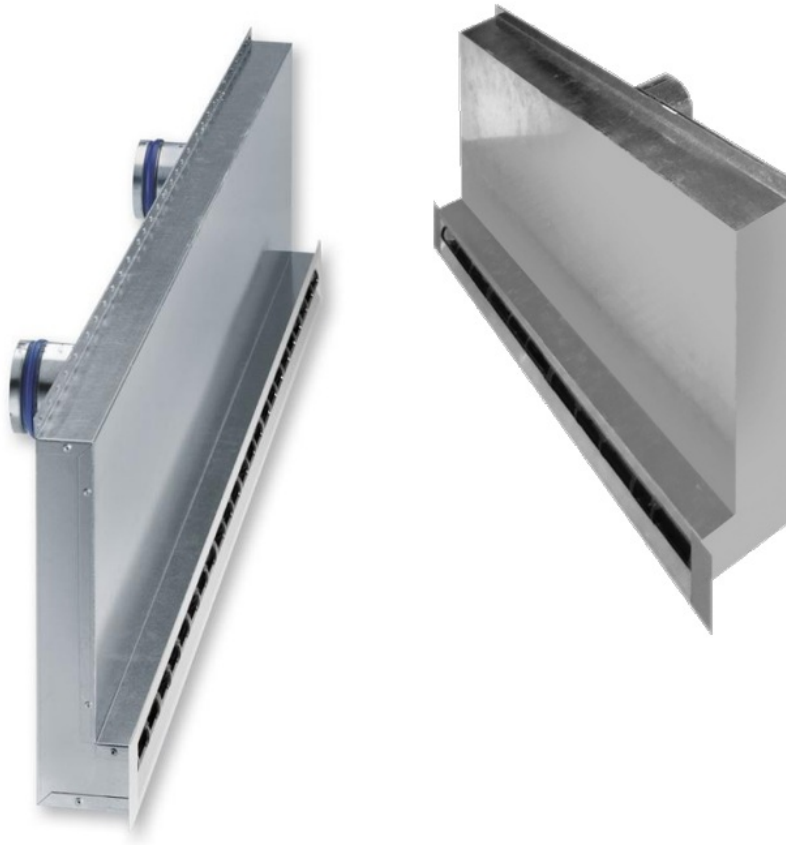
[Home](#) » [TROX](#) » TROX VSD50-1-LT Adjustable Slot Diffuser Instructions 

Contents

- [1 TROX VSD50-1-LT Adjustable Slot Diffuser](#)
- [2 Product Information](#)
- [3 Product Usage Instructions](#)
- [4 Supply Air Configuration](#)
- [5 Extract Air Configuration](#)
- [6 PRODUCT DESCRIPTION](#)
- [7 Technology](#)
- [8 Documents / Resources](#)
 - [8.1 References](#)



TROX VSD50-1-LT Adjustable Slot Diffuser



Product Information

Specifications

- **Product Name:** VSD 50-1-LT
- **Product Type:** Combination Diffuser
- **Space Saving:** Yes
- **Installation:** Lightweight Partition Walls
- **Configuration:** Available as supply and extract air configuration
- **Design:** Adjustable Slot Diffuser
- **Suitable for:** Drywall Construction
- **Dimensions:** L: 550 mm, W: 70 mm

Product Usage Instructions

Installation

1. Ensure you have a lightweight partition wall with a thickness of 100 mm.
2. Identify the desired location for installation.
3. Cut an appropriate opening in the wall based on the dimensions of the diffuser (L: 550 mm, W: 70 mm).
4. Insert the plenum box into the opening, ensuring the side entry The spigot is properly aligned.
5. Secure the plenum box using suitable fixings.
6. Attach the single slot diffuser face to the plenum box using clip fixings.

Usage

The VSD 50-1-LT combination diffuser can be used as either a supply or extract air diffuser, or as a dual-function diffuser for both supply and extract air.

Supply Air Configuration

1. Ensure the diffuser is properly installed according to the installation instructions above.
2. Adjust the slot diffuser to the desired airflow direction by rotating it.
3. Control the air flow rate by adjusting the damper located inside the plenum box.

Extract Air Configuration

1. Ensure the diffuser is properly installed according to the installation instructions above.
2. Adjust the slot diffuser to the desired airflow direction by rotating it.
3. Control the air flow rate by adjusting the damper located inside the plenum box.

Dual-Function Configuration

1. Ensure the diffuser is properly installed according to the installation instructions above.
2. Adjust the slot diffuser to the desired airflow direction by rotating it.
3. Control the air flow rate by adjusting the dampers located inside the plenum box for both supply and extract air.

Frequently Asked Questions (FAQ)

Q: Can the VSD 50-1-LT be installed in any type of wall?

- **A:** No, the VSD 50-1-LT is specifically designed for use in lightweight partition walls with a thickness of 100 mm.

Q: Can I adjust the airflow rate of the diffuser?

- **A:** Yes, you can adjust the airflow rate by adjusting the damper located inside the plenum box.

Q: Can I use the VSD 50-1-LT as both a supply and extract air diffuser?

- **A:** Yes, the VSD 50-1-LT can be used as a dual-function diffuser for both supply and extract air.

VSD50-1-LT

- The extraordinarily space-saving TROX combination diffuser VSD50-1-LT with integrated cross-talk sound attenuator can be installed into lightweight partition walls.
- It is also available as a combined supply and extract air configuration.

PRODUCT DESCRIPTION

- The adjustable slot diffuser type VSD50-1-LT is designed for use in lightweight partition walls (100 mm).


- The design and dimensions are suitable for use in drywall construction and allow complete integration of the slots into a lightweight partition.
- The units are available as simple slot diffusers for either supplying or extracting air and as dual-function slot diffusers for both supplying and extracting air.
- Each unit consists of a plenum box, which includes integrated cross-talk sound attenuation a side entry spigot, and a single slot diffuser face configuration.
- The diffuser face has end angles at both ends and can be a second fix item using clip fixings.

Technology

rectangular

- 14 – 55 l/s
- 50 – 200 m³/h
- 30 – 118 cfm
- L: 550 and 1,175 mm
- W: 70 mm

Documents / Resources

	<p>TROX VSD50-1-LT Adjustable Slot Diffuser [pdf] Instructions VSD 50-1-LT, VSD50-1-LT, VSD50-1-LT Adjustable Slot Diffuser, Adjustable Slot Diffuser, Slot Diffuser, Diffuser</p>
---	--

References

- [Изделия | ТРОКС Австрия ООД Представителство в България](#)
- [VSD 50-1-LT | ТРОКС Австрия ООД Представителство в България](#)
- [Contact | ТРОКС Австрия ООД Представителство в България](#)
- [Информация | ТРОКС Австрия ООД Представителство в България](#)
- [General Terms and Conditions of Supply and Payment TROX Austria GmbH | ТРОКС Австрия ООД Представителство в България](#)
- [privacy | ТРОКС Австрия ООД Представителство в България](#)
- [User Manual](#)