



Troxnetcom As-I Installation Set User Guide

[Home](#) » [TROX](#) » Troxnetcom As-I Installation Set User Guide 

Contents

- [1 Troxnetcom As-I Installation Set](#)
- [2 Product Information](#)
- [3 Product Usage Instructions](#)
- [4 FAQ](#)
- [5 TROX SERVICES](#)
- [6 Documents / Resources](#)
 - [6.1 References](#)



Troxnetcom As-I Installation Set

Troxnetcom-As-I-Installation-Set-PRODUCT

Product Information

Specifications

- Product Name: TROXNETCOM AS-I – AS-I Installation Set
- Product Type: Fire and Smoke Protection
- Manufacturer: TROX SERVICES

Description

The TROXNETCOM AS-I – AS-I Installation Set is a fire and smoke protection system designed to ensure the safety of buildings. It is a comprehensive solution that combines advanced technology and ease of installation.

Features

- AS-I technology for efficient communication and control
- Easy installation and setup
- Reliable fire and smoke detection
- Integration with existing building management systems
- Compliance with industry standards and regulations

Product Usage Instructions

Installation

To install the TROXNETCOM AS-I – AS-I Installation Set, follow these steps:

1. Select a suitable location for the control panel.
2. Mount the control panel securely on the wall using the provided screws.
3. Connect the necessary power supply to the control panel.
4. Install the smoke detectors in strategic locations as per the building's fire safety plan.
5. Connect the smoke detectors to the control panel using the provided cables.
6. Ensure all connections are secure and properly insulated.
7. Test the system to ensure proper functioning.

System Setup

Once the installation is complete, follow these steps to set up the TROXNETCOM AS-I – AS-I Installation Set:

1. Power on the control panel and wait for it to initialize.
2. Access the control panel's user interface using the provided login credentials.
3. Configure the system settings, including alarm thresholds, notification preferences, and integration with other building management systems.
4. Perform a system test to ensure all components are functioning correctly.

Maintenance

To ensure the continued optimal performance of the TROXNETCOM AS-I – AS-I Installation Set, perform regular maintenance tasks:

- Inspect smoke detectors for any signs of damage or malfunction.
- Clean smoke detectors periodically to remove dust and debris.
- Check all connections and cables for any loose or damaged parts.
- Keep the control panel and surrounding area clean and free from obstructions.
- Regularly update the system software as new versions become available.

FAQ

Q: Can I expand the TROXNETCOM AS-I – AS-I Installation Set in the future?

A: Yes, the TROXNETCOM AS-I – AS-I Installation Set is designed to be scalable. You can add additional smoke detectors or integrate it with other fire and smoke protection systems as per your requirements.

Q: How often should I test the system?

A: It is recommended to test the system at least once every six months. However, it is best practice to consult local regulations and guidelines for specific testing frequency requirements.

Q: Can I integrate the TROXNETCOM AS-I – AS-I Installation Set with my existing building management system?

A: Yes, the TROXNETCOM AS-I – AS-I Installation Set is designed to be compatible with various building management systems. Please consult the documentation or contact our support team for detailed integration instructions.

TROX SERVICES

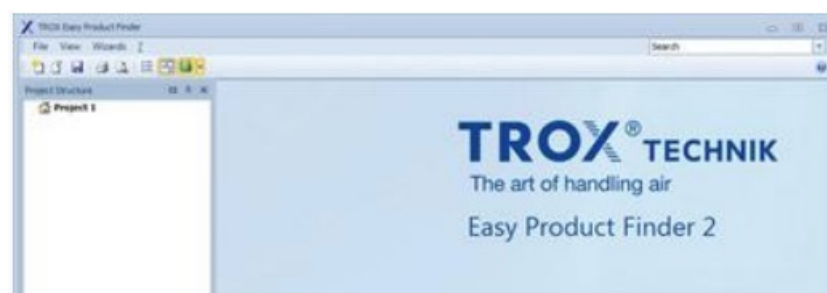
PRODUCT SEARCH A-Z

Form up quickly and neasy.



TROX EASY PRODUCT FINDER

Fast. Reliable. Innovative




ARCHIVE APPROVALS, CERTIFICATES

Fire and smoke protection systems



Documents / Resources

	<p>TROX Troxnetcom As-I Installation Set [pdf] User Guide Troxnetcom As-I Installation Set, Troxnetcom, As-I Installation Set, Installation Set, Set</p>
---	--

References

- [WELKOM - BIENVENUE | S.A. TROX Belgium/TROX Belgium N.V.](#)
- [Contact | S.A. TROX Belgium/TROX Belgium N.V.](#)
- [TROXNETCOM | S.A. TROX Belgium/TROX Belgium N.V.](#)
- [GENERAL PURCHASING CONDITIONS | S.A. TROX Belgium/TROX Belgium N.V.](#)
- [Products | S.A. TROX Belgium/TROX Belgium N.V.](#)
- [Fire and Smoke Protection | S.A. TROX Belgium/TROX Belgium N.V.](#)
- [Delivery and payment terms TROX GmbH | S.A. TROX Belgium/TROX Belgium N.V.](#)
- [Disclaimer | S.A. TROX Belgium/TROX Belgium N.V.](#)
- [Imprint | S.A. TROX Belgium/TROX Belgium N.V.](#)
- [OUR DATA PROTECTION POLICY | S.A. TROX Belgium/TROX Belgium N.V.](#)
- [TROXNETCOM AS-I - AS-I INSTALLATION SET | S.A. TROX Belgium/TROX Belgium N.V.](#)
- [TROXNETCOM AS-i | S.A. TROX Belgium/TROX Belgium N.V.](#)
- [User Manual](#)