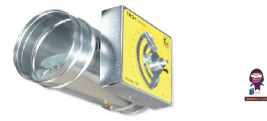


TROX RN-Ex 80 Air Flow Control Unit



TROX RN-Ex 80 Air Flow Control Unit Instruction Manual

[Home](#) » [TROX](#) » TROX RN-Ex 80 Air Flow Control Unit Instruction Manual 

Contents

- 1 TROX RN-Ex 80 Air Flow Control Unit
- 2 Product Information
- 3 Product Usage Instructions
- 4 RN/RN-Ex 80
- 5 RN/RN-Ex 100
- 6 RN/RN-Ex 125
- 7 RN/RN-Ex 160
- 8 RN/RN-Ex 200
- 9 RN/RN-Ex 250
- 10 RN/RN-Ex 315
- 11 RN/RN-Ex 400
- 12 Frequently Asked Questions (FAQ)
- 13 Documents / Resources
 - 13.1 References



TROX RN-Ex 80 Air Flow Control Unit



Product Information

The CD10065 V1 is a setpoint adjustment aid designed for damaged or illegible scales. It comes in various models ranging from RN/RN-Ex 80 to RN/RN-Ex 400, each offering precision and reliability in setpoint adjustment.

Specifications

- Model Numbers: RN/RN-Ex 80, RN/RN-Ex 100, RN/RN-Ex 125, RN/RN-Ex 160, RN/RN-Ex 200, RN/RN-Ex 250, RN/RN-Ex 315, RN/RN-Ex 400
- Compatibility: Suitable for damaged or illegible scale adjustments
- Dimensions: 1:1 ratio with 2cm scale increments
- Product Code: CD10065 V1
- Year: 2024

Product Usage Instructions

Unboxing and Setup

Remove the CD10065 V1 from its packaging and place it on a stable surface. Ensure the device is powered off before proceeding.

Setpoint Adjustment

Locate the damaged or illegible scale that requires adjustment. Use the CD10065 V1 to make precise setpoint adjustments by following the markings on the device corresponding to a 2cm scale increment.

Calibration

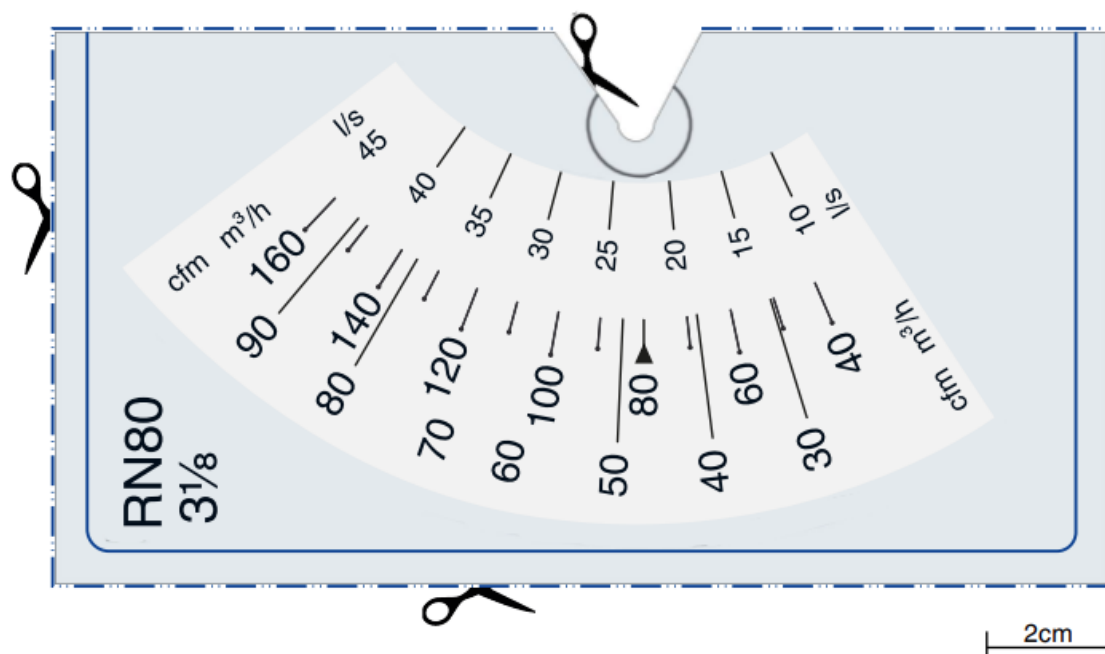
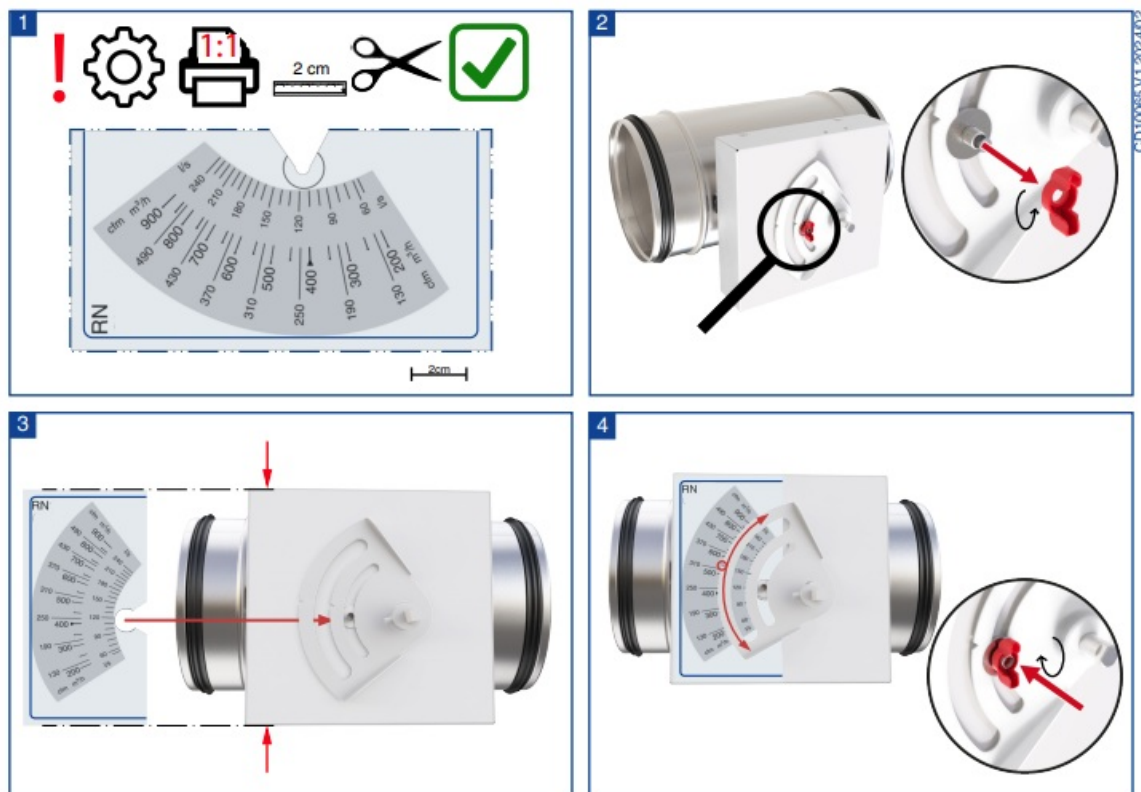
If necessary, calibrate the CD10065 V1 according to your specific requirements. Refer to the user manual for detailed calibration instructions.

Maintenance

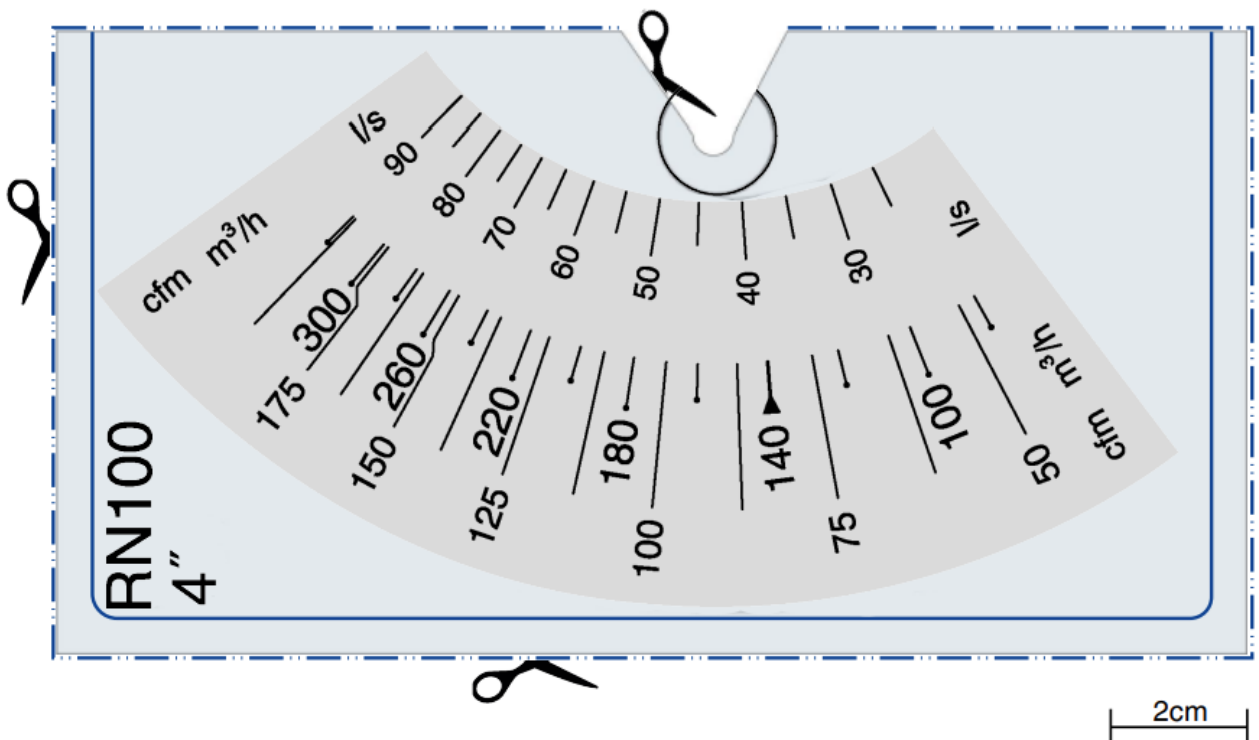
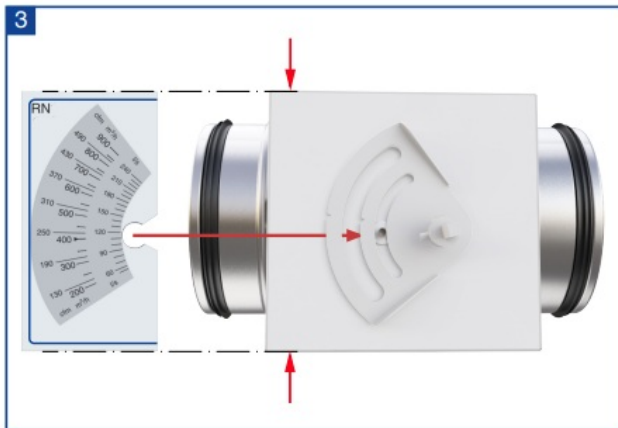
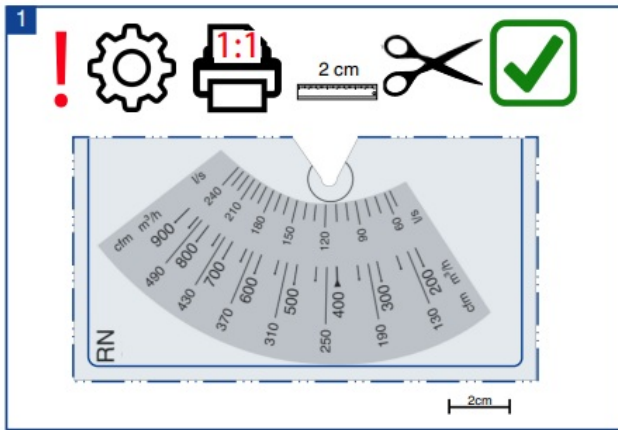
Regularly clean the CD10065 V1 with a soft, dry cloth to ensure optimal performance and longevity.

RN/RN-Ex 80

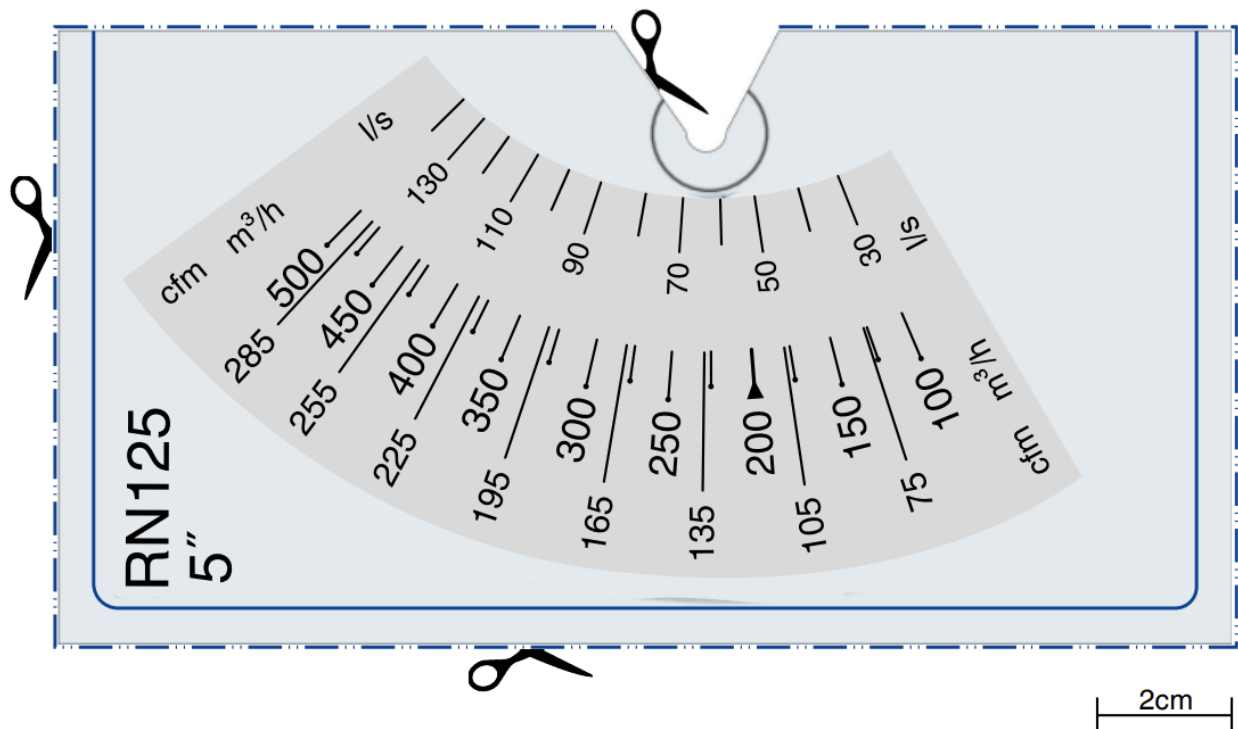
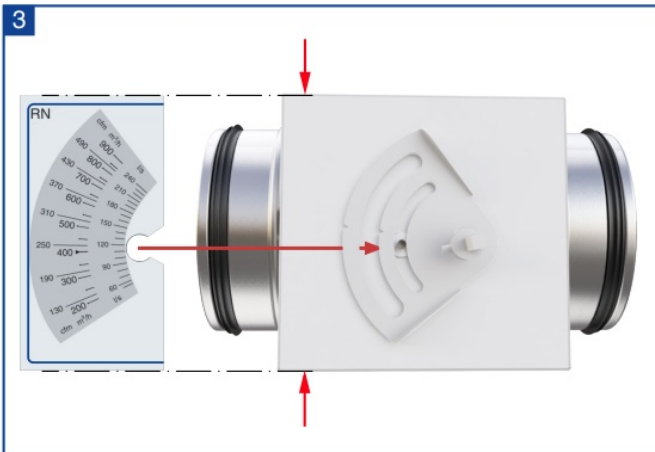
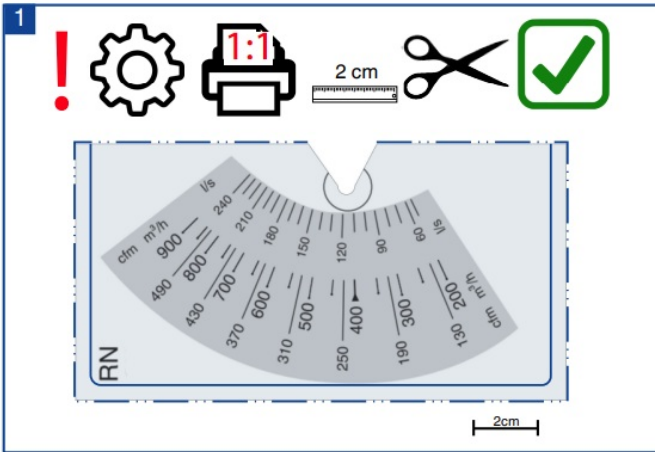
Setpoint adjustment aid for damaged



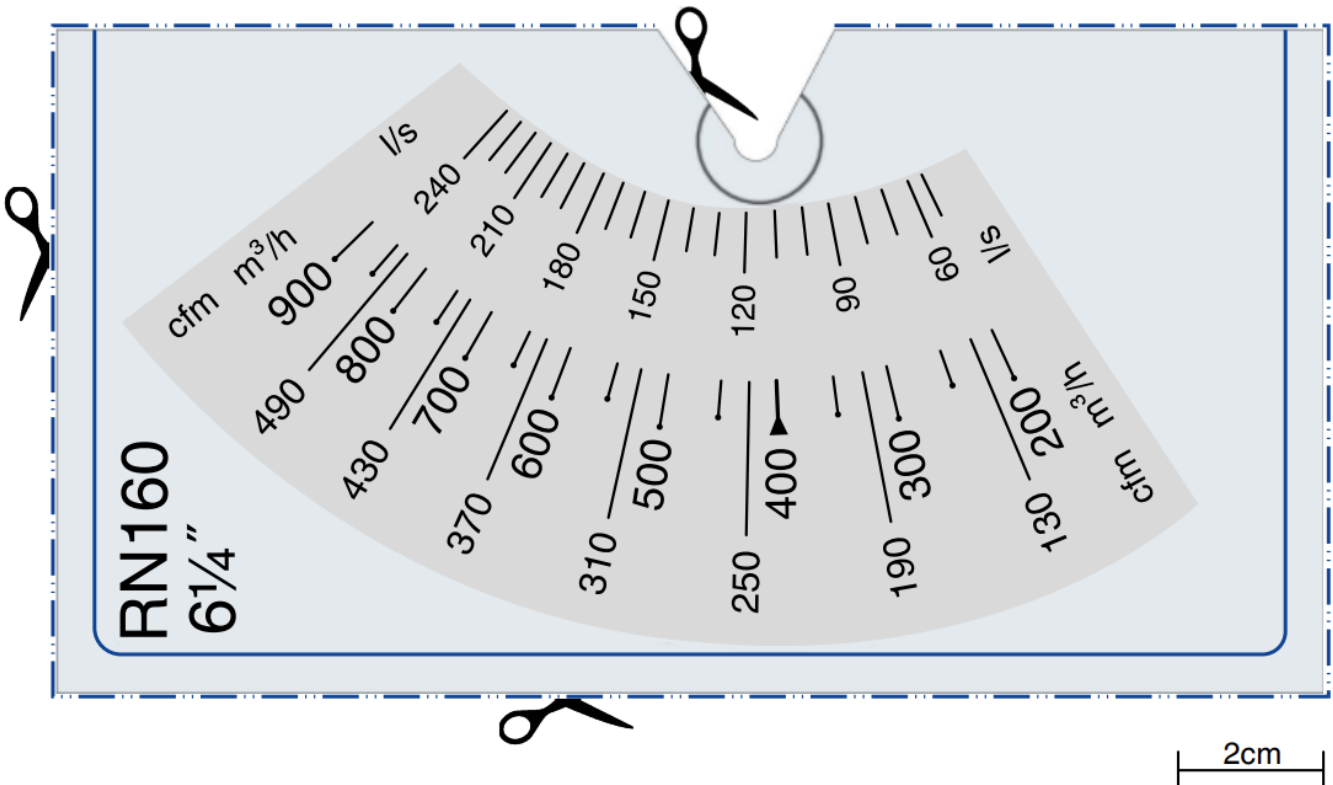
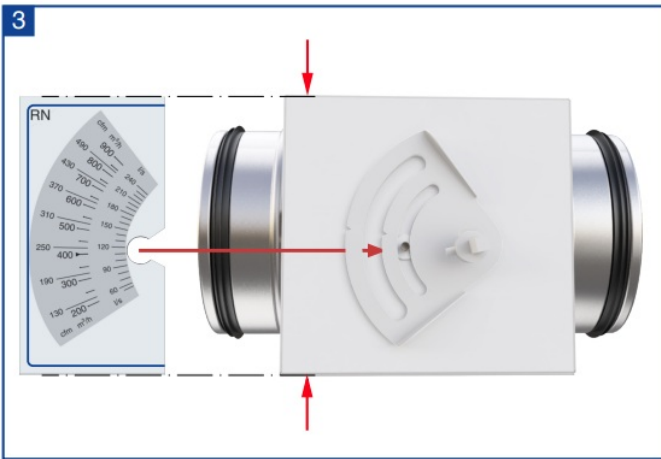
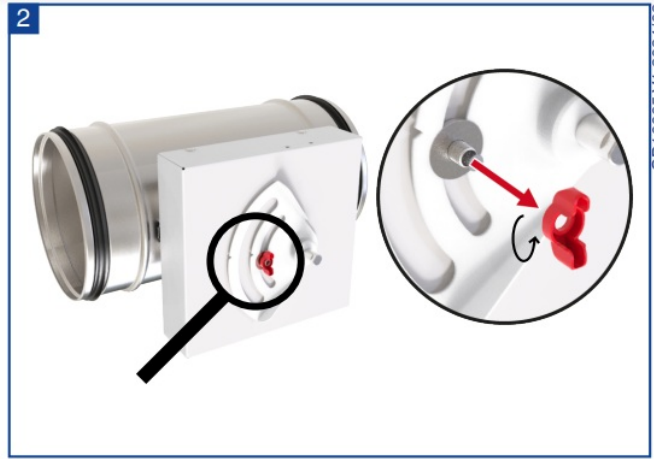
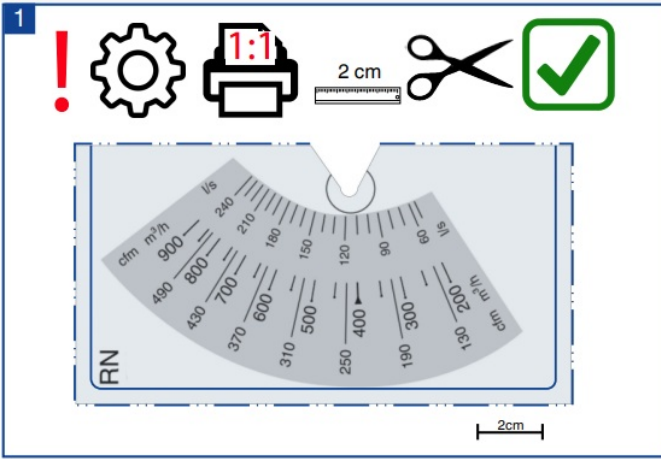
RN/RN-Ex 100



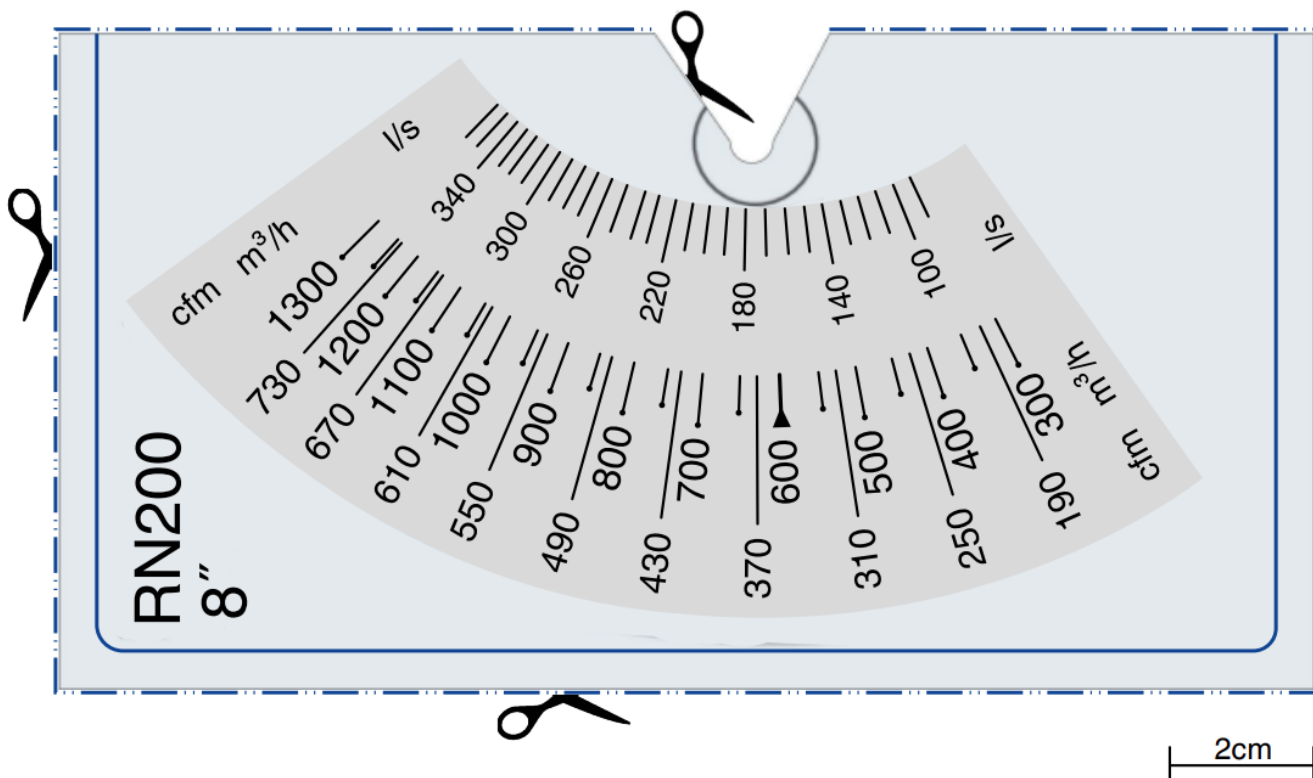
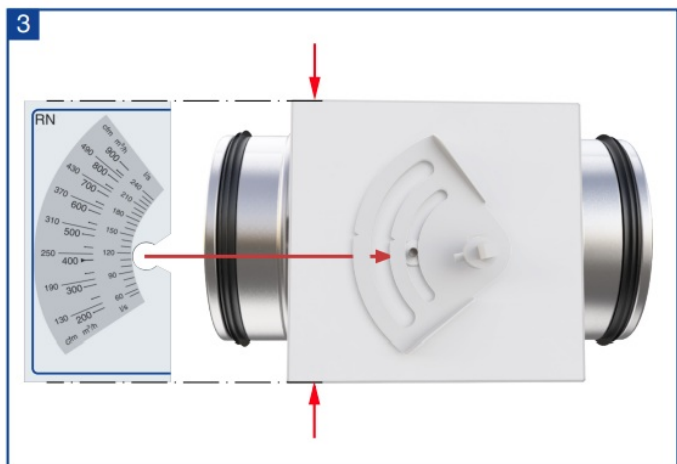
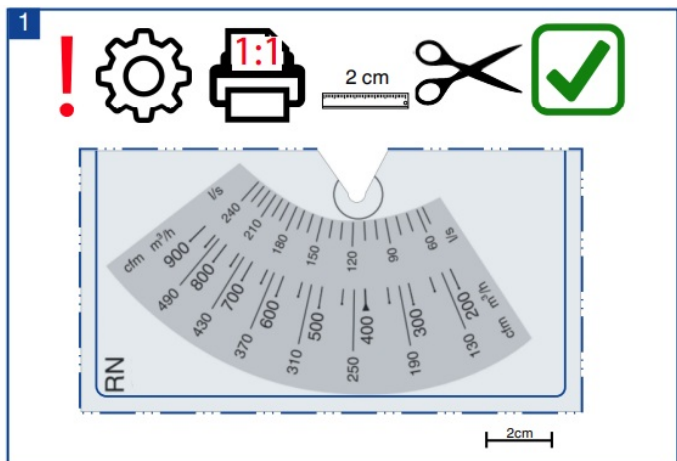
RN/RN-Ex 125



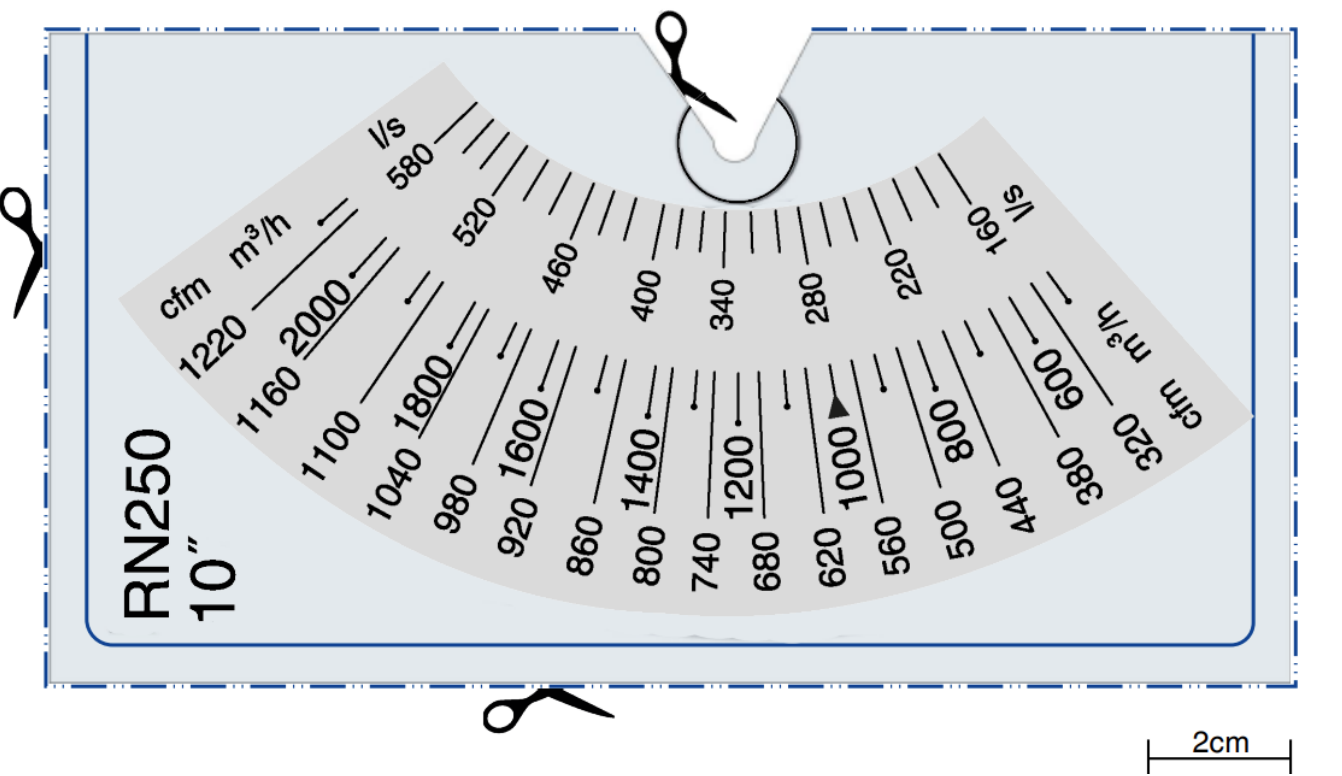
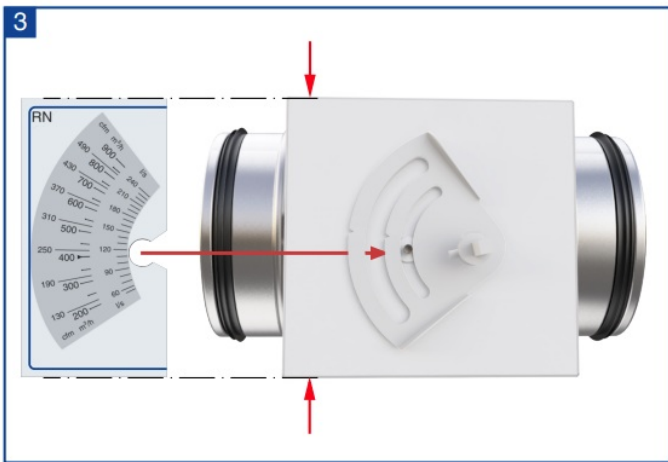
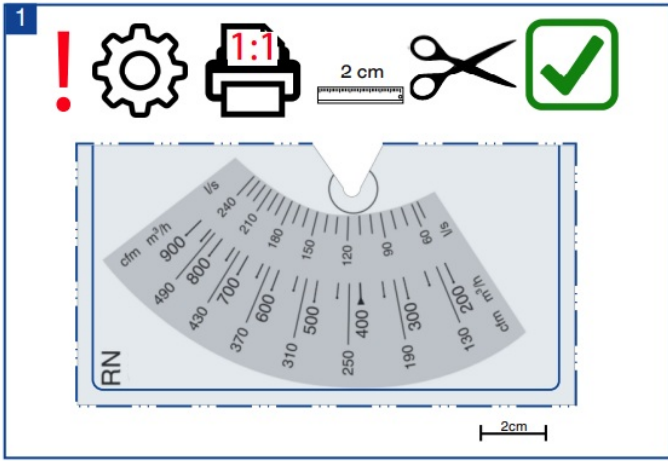
RN/RN-Ex 160



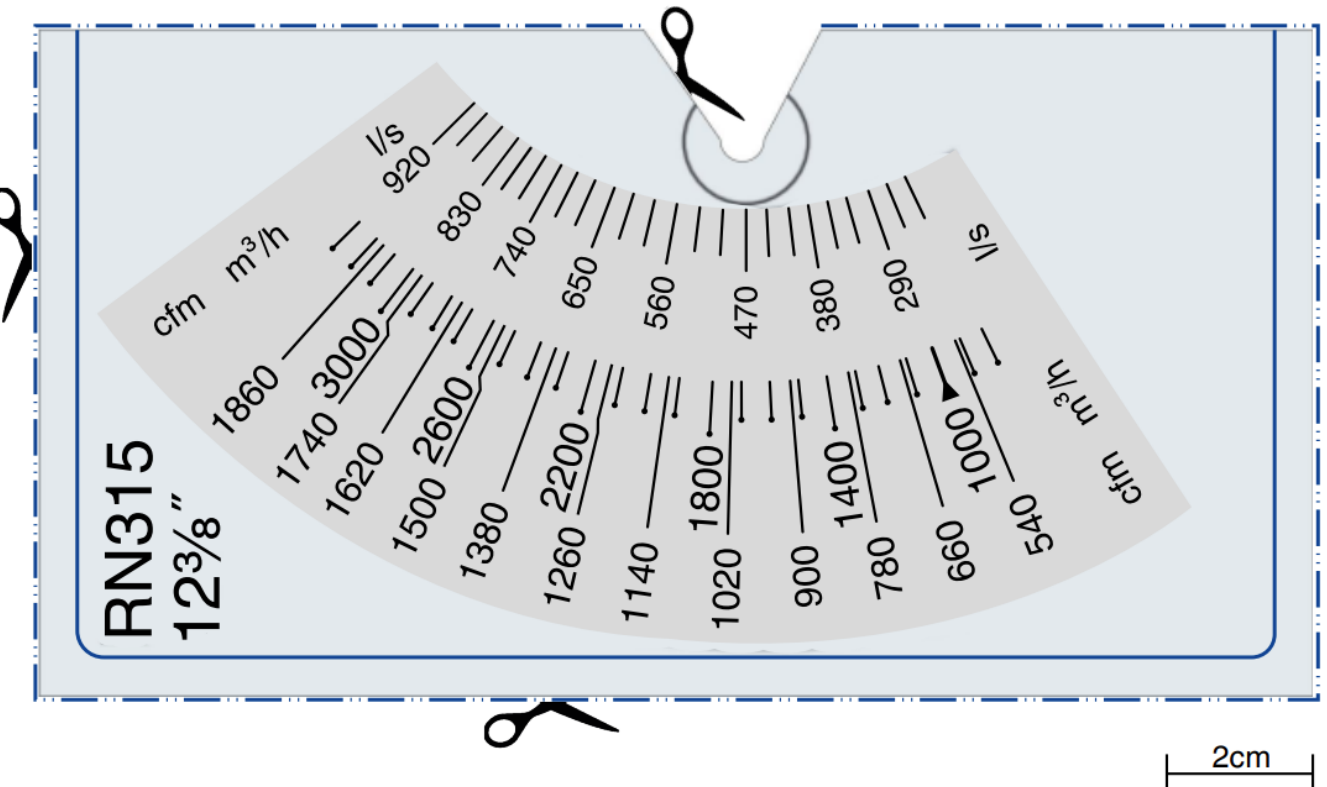
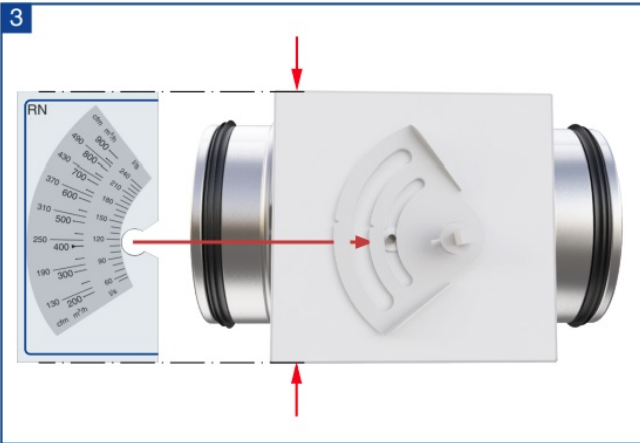
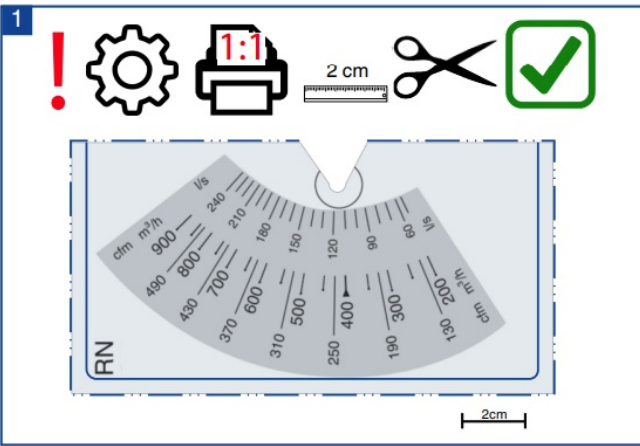
RN/RN-Ex 200



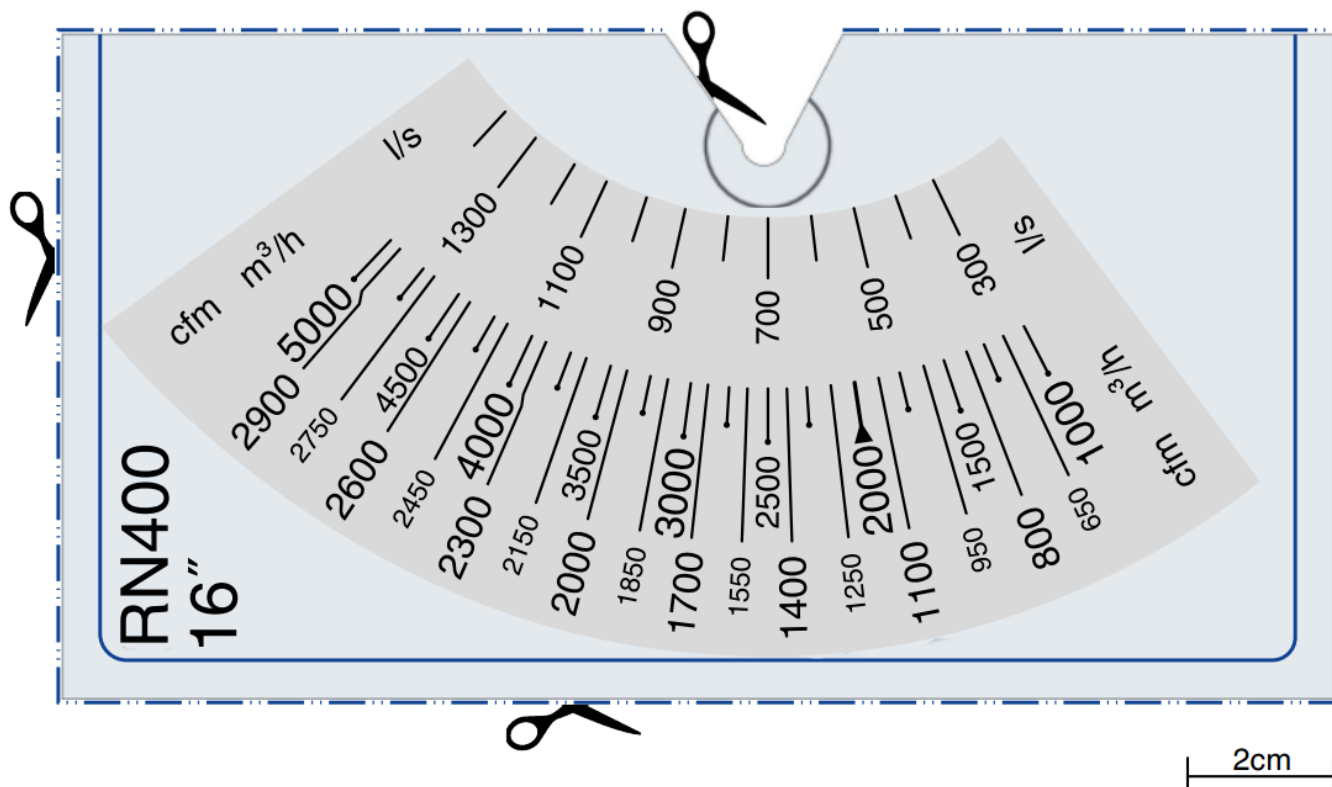
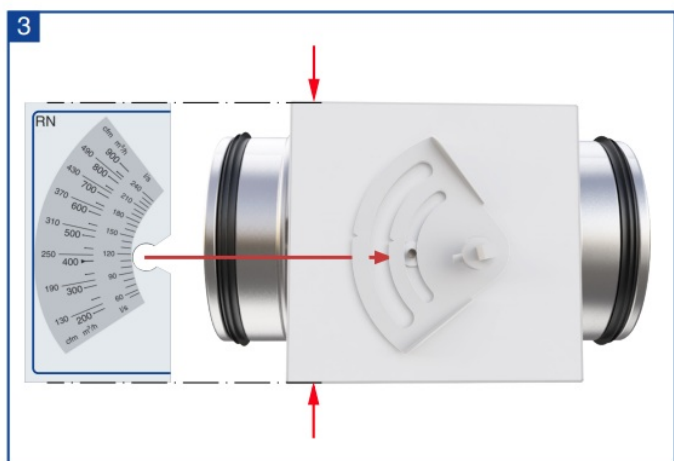
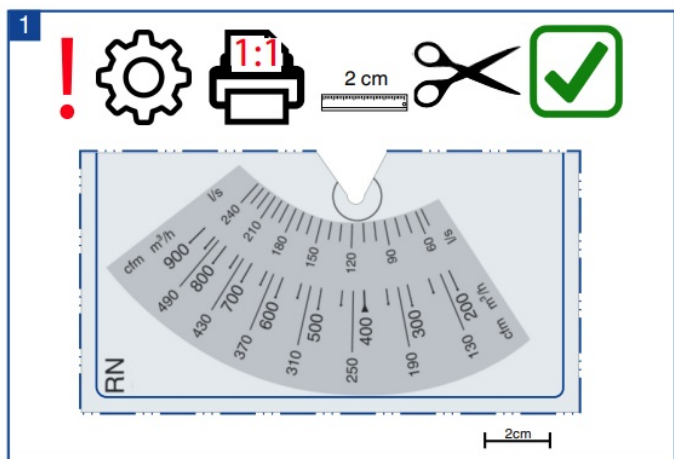
RN/RN-Ex 250



RN/RN-Ex 315



RN/RN-Ex 400



Frequently Asked Questions (FAQ)

Q: Can the CD10065 V1 be used for all types of scales?

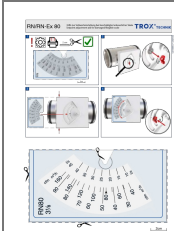
A: The CD10065 V1 is specifically designed for damaged or illegible scales and may not be suitable for all types of scales. Please refer to the product manual for compatibility information.

Q: How often should I calibrate the CD10065 V1?

A: Calibration frequency may vary depending on usage and environmental factors. It is recommended to calibrate the device periodically or whenever accuracy issues are observed.



Documents / Resources



[TROX RN-Ex 80 Air Flow Control Unit](#) [pdf] Instruction Manual
RN-Ex 80, RN-Ex 80 Air Flow Control Unit, Air Flow Control Unit, Flow Control Unit, Control Unit
, Unit

References

- [User Manual](#)

[Manuals+](#), [Privacy Policy](#)

This website is an independent publication and is neither affiliated with nor endorsed by any of the trademark owners. The "Bluetooth®" word mark and logos are registered trademarks owned by Bluetooth SIG, Inc. The "Wi-Fi®" word mark and logos are registered trademarks owned by the Wi-Fi Alliance. Any use of these marks on this website does not imply any affiliation with or endorsement.