



TROX ARK2 Subframe Installation Guide

[Home](#) » [TROX](#) » TROX ARK2 Subframe Installation Guide 

Contents

- [1 TROX ARK2 Subframe](#)
- [2 Product Information](#)
- [3 FAQ](#)
- [4 INSTRUCTION](#)
- [5 Application](#)
- [6 Description](#)
- [7 TECHNICAL INFORMATION](#)
- [8 Installation details](#)
- [9 Documents / Resources](#)
 - [9.1 References](#)

TROX[®] TECHNIK

TROX ARK2 Subframe



Product Information

Specifications

- **Type:** Non-return damper, variant ARK
- **Materials:** Galvanized steel or stainless steel
- **Nominal sizes:** Available in various sizes
- **Function:** Installation subframe for non-return dampers and pressure-relief dampers

Description

The non-return damper with linkage is designed for the fast and simple installation of non-return dampers and pressure-relief dampers. It includes an installation subframe made of galvanized steel or stainless steel, with fixing tabs for secure attachment. The subframe allows for precise installation in walls and ceiling slabs.

Parts and Characteristics

- Installation subframe consisting of angle sections
- Threaded studs or hexagon head screws
- Washers
- Hexagon nuts
- Fixing tabs

Materials and Surfaces

- Galvanized steel variant with screw-on fixing tabs
- Stainless steel variant with welded fixing tabs
- All materials made of stainless steel, material no. 1.4301

Variants and Dimensions

- Galvanized steel variants: UL, KUL, ARK, ARK2
- Stainless steel variants: ARK-A2, ARK2-A2

Installation Details

UL:

Before mortaring in the installation subframe:

1. Bend and spread the fixing tabs

After mortaring in the installation subframe:

1. Align the non-return damper with the subframe
2. Fasten the damper securely

KUL, ARK, ARK2:

Installation in front of internal wall openings:

1. Attach the threaded stud to the installation subframe
2. Secure the fixing tab

FAQ

- **Q: What is the purpose of the non-return damper variant ARK?**

A: The non-return damper variant ARK is designed for the fast and simple installation of non-return dampers and pressure-relief dampers.

- **Q: What materials are available for the non-return damper?**

A: The non-return damper is available in galvanized steel or stainless steel variants.

- **Q: Can the installation subframe be used for both walls and ceiling slabs?**

A: Yes, the installation subframe is suitable for the installation of non-return dampers and pressure-relief dampers in both walls and ceiling slabs.

- **Q: What are the dimensions available for the non-return damper variant ARK?**

A: The dimensions vary depending on the specific variant chosen. Please refer to the product specifications for more information.

- **Q: How should I install the non-return damper?**

A: The installation process may vary depending on the specific variant chosen. Please refer to the installation details section in the user manual for step-by-step instructions.

INSTRUCTION

FOR THE FAST AND SIMPLE INSTALLATION OF NONRETURN DAMPERS AND PRESSURE-RELIEF DAMPERS

Installation subframe for the fast and precise installation of non-return dampers and pressure-relief dampers. Installation subframes with fixing tabs are mortared into the wall opening, then the dampers are fastened to the subframes

- Angle sections made of galvanised steel or stainless steel
- Galvanised steel variant with screw-on fixing tabs
- Stainless steel variant with welded fixing tabs

Application

Application

- For the installation of non-return dampers and pressure-relief dampers in walls and ceiling slabs
- Simplified installation
- The installation subframe allows for the fast, simple and precise installation of non-return dampers and pressure-relief dampers

Nominal sizes

- **B:** 200, 400, 600, 800, 1000, 1200 mm (intermediate sizes: 201 – 1199 mm, in increments of 1 mm)
- **H:** 345, 675, 1005, 1335, 1665, 1995 mm (intermediate sizes 355 – 505, 685 – 835, 1015 – 1165, 1345 – 1495, 1675 – 1825 mm in increments of 1 mm)
- Any combination of B × H

Description

Parts and characteristics

- Installation subframe consisting of angle sections
- Threaded studs or hexagon head screws
- Washers
- Hexagon nuts
- Fixing tab

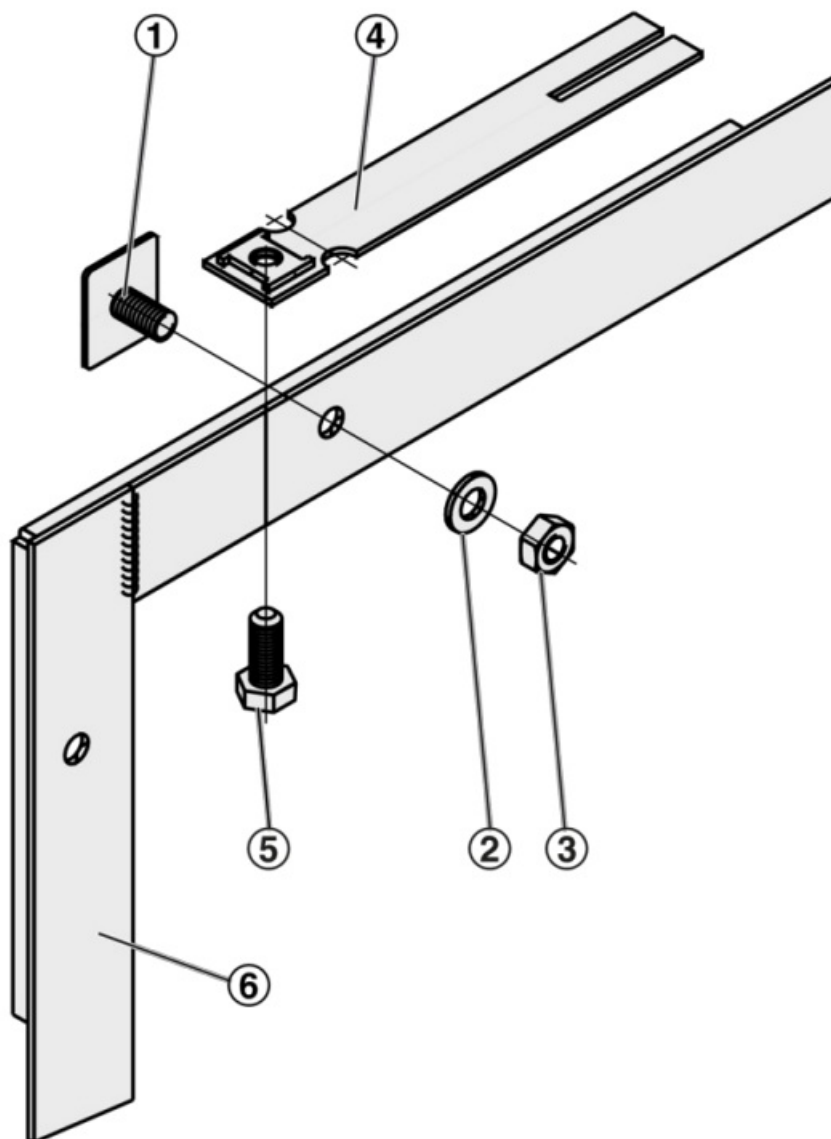
Materials and surfaces

- **UL-1, UL-2**
 - Installation subframe made of galvanised steel (angle section 35 × 35 × 3 mm)
 - Welded fixing tabs with integral nuts, screws and washers made of galvanised steel
- **KUL, ARK, ARK2**
 - Installation subframe made of galvanised steel (angle section 35 × 35 × 3 mm)
 - Screw-on fixing tabs, threaded studs, screws, nuts and washers made of galvanised steel
- **ARK-A2, ARK2-A2**
 - Installation subframe made of stainless steel, material no. 1.4301
 - Welded fixing tabs, threaded studs, nuts and washers made of stainless steel, material no. 1.4301

TECHNICAL INFORMATION

Function

Installation subframe made of galvanised steel for non-return dampers and pressure-relief dampers



1. Threaded stud
2. Washer
3. Hexagon nut
4. Fixing tab
5. Hexagon head screw
6. Installation subframe

Variants, Dimensions

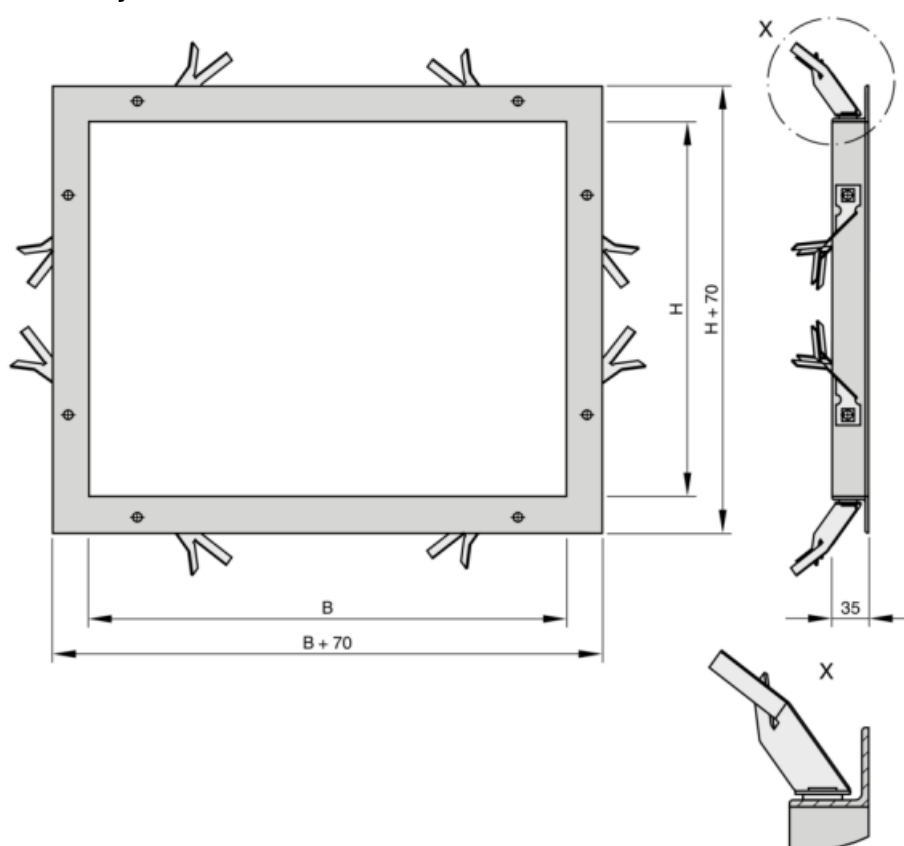
Installation subframe for non-return dampers and pressure-relief dampers.

| Description | Type |
|------------------|--------------------|
| Galvanised steel | UL, KUL, ARK, ARK2 |
| Stainless steel | ARK-A2, ARK2-A2 |

Materials

| Part | Damper type or variant | Material | Notes |
|---|------------------------|---------------------------------------|--|
| Installation subframe | UL, KUL, ARK, ARK2 | Galvanised steel | Angle section frame 35 × 3 5 × 3 mm |
| | ARK-A2, ARK2-A2 | Stainless steel, material n o. 1.4301 | |
| Fixing tabs, screws, nuts and washers | UL | Galvanised steel | Welded fixing tabs |
| | KUL, ARK, ARK2 | Galvanised steel | Screw-on fixing tabs |
| Fixing tabs, threaded stubs, nuts and washers | ARK-A2, ARK2-A2 | Stainless steel, material n o. 1.4301 | Welded fixing tabs |

Installation subframe ready to be mortared in



Before the subframe is mortared in, the fixing tabs must be bent and spread (by others).

Installation details

Installation and commissioning

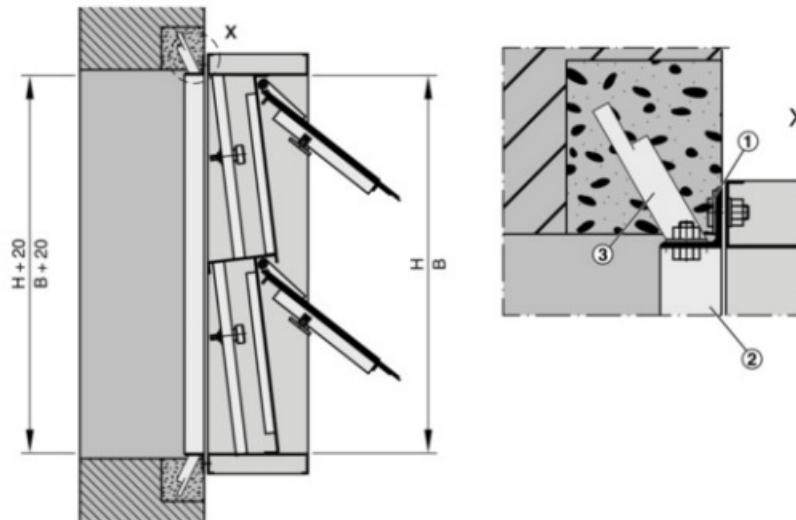
• UL

- Before mortaring in the installation subframe
 - Bend and spread the fixing tabs
- After mortaring in the installation subframe
 - Align the non-return damper with the subframe and fasten it

- **KUL, ARK, ARK2**

- Before mortaring in the installation subframe
 - Fasten the threaded studs, washers and nuts to the installation subframe
 - Fix the screw-on fixing tabs with hexagon nuts
 - Fasten the remaining screw-on fixing tabs (regular spacing, about every 375 – 625 mm)
- After mortaring in the installation subframe
 - Unscrew the hexagon nuts
 - Align the non-return damper or pressure-relief damper with the subframe and fasten it


Installation in front of internal wall openings



1. Threaded stud
2. Installation subframe
3. Fixing tab

Illustration shows ARK2

Documents / Resources

| | |
|---|---|
|  | TROX ARK2 Subframe [pdf] Installation Guide ARK2, ARK-A2, ARK2-A2, ARK2 Subframe, Subframe |
|---|---|

References

- [!\[\]\(eae20f1adff742df783f6f7e3bbe72d1_img.jpg\) TROX UK - Industry leading manufacturers and suppliers of superior quality air conditioning, ventilation, fire and smoke protection systems, components and controls | TROX UK Ltd](#)
- [!\[\]\(43c6e08c5a1618d745b54da5c843274e_img.jpg\) CONTACT | TROX UK Ltd](#)
- [!\[\]\(f5ee48910650695cea680b2433c1d60d_img.jpg\) Disclaimer | TROX UK Ltd](#)
- [!\[\]\(da0f02caffeb5a74776a1d5d1892b059_img.jpg\) Imprint | TROX UK Ltd](#)
- [!\[\]\(edb096eed27f3ac1241ba8d18d05acad_img.jpg\) OUR PRIVACY POLICY | TROX UK Ltd](#)
- [!\[\]\(554d866cfdb5a2c8f73998019542d337_img.jpg\) TROX UK's Terms and Conditions of Sale | TROX UK Ltd](#)
- [User Manual](#)