

 **TROTEC**  
**TROTEC UV-**  
**TORCHLIGHT 16F**  
Rechargeable  
Ultraviolet LED  
Torch



# TROTEC UV-TORCHLIGHT 16F Rechargeable Ultraviolet LED Torch Installation Guide

[Home](#) » [TROTEC](#) » TROTEC UV-TORCHLIGHT 16F Rechargeable Ultraviolet LED Torch Installation Guide 

## Contents

- [1 TROTEC UV-TORCHLIGHT 16F Rechargeable Ultraviolet LED Torch](#)
- [2 Safety](#)
- [3 Intended use](#)
- [4 Personnel qualification](#)
- [5 Disposal](#)
- [6 Installation](#)
- [7 Documents / Resources](#)
  - [7.1 References](#)
- [8 Related Posts](#)



**TROTEC UV-TORCHLIGHT 16F Rechargeable Ultraviolet LED Torch**



## Specifications

- Model: UV-TORCHLIGHT 16F
- Power source: 3x LR03 1.5V (AAA) batteries or 3x HR03 1.2V] (AAA) batteries.

You can download the current version of the operating manual and the EU declaration of conformity via the following link:

## Safety

Read this manual carefully before starting or using the device. Always store the manual in the immediate vicinity of the device or its site of use.

### Warning

Read all safety warnings and all instructions.

Failure to follow the warnings and instructions may result in electric shock, fire and/or serious injury.

Save all warnings and instructions for future reference.

- Do not use the device in potentially explosive rooms or areas and do not install it there.
- Do not use the device in aggressive atmosphere.
- This appliance is not a toy. Keep away from children and animals.
- Protect the device from permanent direct sunlight.
- Do not open the device.
- Do not remove any safety signs, stickers or labels from the device. Keep all safety signs, stickers and labels in legible condition.
- Use batteries of type AAA.

- Observe the safety instructions for batteries, even when using rechargeable batteries.
- Never charge batteries that cannot be recharged.
- Different types of batteries and new and used batteries must not be used together.
- Insert the batteries into the battery compartment according to the correct polarity.
- Remove the batteries from the device if you will not be using the device for a longer period of time.
- Never short-circuit the supply terminal in the battery compartment!
- Do not swallow batteries! If a battery is swallowed, it can cause severe internal burns within 2 hours! These burns can lead to death!
- If you think batteries might have been swallowed or otherwise entered the body, seek medical attention immediately!
- Keep new and used batteries and an open battery compartment away from children.
- Only use batteries specifically designed for this device. Use of any other battery packs may create a risk of injury and fire. Observe the specifications in the technical data.
- Recharge only with the charger specified by the manufacturer. A charger that is suitable for one type of battery pack may create a risk of fire when used with another battery pack.
- Observe the storage and operating conditions (see Technical data).

## **Intended use**

Only use the device to irradiate objects, e.g. to find cracks or leaks, or to identify certain UV markers when checking banknotes or hygiene.

Any use other than the intended use is regarded as misuse.

## **Reasonably foreseeable misuse**

The device must not be pointed at people or animals. Do not use the device in potentially explosive areas. Do not use the device underwater.

Any unauthorized changes, modifications or alterations to the device are forbidden.

## **Personnel qualification**

### **People who use this device must:**


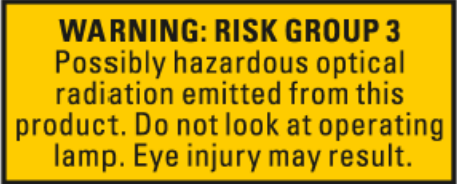
- use the UV lamp in accordance with safe working procedures.
- be aware of the dangers that occur when working with UV lamps.
- wear UV protection glasses.
- wear covering clothing.
- have read and understood the instructions, especially the Safety chapter.

## **Safety signs and labels on the device**

### **Notice**

Do not remove any safety signs, stickers or labels from the device. Keep all safety signs, stickers and labels in legible condition.

The following safety signs and labels are attached to the device:

<b>Warning sign</b>	
<b>Meaning</b>	<p>The warning sign is located on the lamp and indicates that this is a device with UV radiation of risk group 3. The device generates UV-A radiation in the non-visible range. There is a danger of eye damage.</p> <p>Do not look directly into the opening from which the light beam emerges!</p>
<b>Warning sign</b>	
<b>Meaning</b>	<p>The warning sign is located on the transport case and indicates that this device emits UV radiation of risk group 3.</p> <p>The device generates UV-A radiation in the non-visible range. There is a danger of eye damage.</p> <p>Do not look directly into the opening from which the light beam emerges!</p>

## Residual risks

### Warning of electrical voltage

There is a risk of a short-circuit due to liquids penetrating the housing!

Do not immerse the device and the accessories in water. Make sure that no water or other liquids can enter the housing.

### Warning of electrical voltage

Work on the electrical components must only be carried out by an authorised specialist company!

### Warning of explosive substances

Do not expose the batteries to temperatures above 60 °C! Do not let the batteries come into contact with water or fire! Avoid direct sunlight and moisture. There is a risk of explosion!

## Warning

### Danger from UV radiation!

The device generates UV-A radiation in the non-visible range of < 400 nm. The eyelid closure reflex does not work in this UV range. Do not look at the UV LED or into its beams during operation. Be careful not to shine the light directly on people or animals.

Do not use optics within the light cone to bundle the light beams. When used in direct proximity to the object, the reflected

UV radiation is stronger and thus more intense than at a distance of several metres. Always use suitable UV filters or safety glasses according to CE-EN166 to avoid eye damage. Also avoid prolonged exposure of skin or other living tissue.

## Warning

Risk of suffocation!

Do not leave the packaging lying around. Children may use it as a dangerous toy.

- Warning

The device is not a toy and does not belong in the hands of children.

- Warning

Dangers can occur at the device when it is used by untrained people in an unprofessional or improper way!

Observe the personnel qualifications!

- Caution

Keep a sufficient distance from heat sources.

- Notice

To prevent damages to the device, do not expose it to extreme temperatures, extreme humidity or moisture.

- Notice

Do not use abrasive cleaners or solvents to clean the device.

## Disposal

Always dispose of packing materials in an environmentally friendly manner and in accordance with the applicable local disposal regulations.



■ The icon with the crossed-out waste bin on waste electrical or electronic equipment is taken from Directive 2012/19/EU. It states that this device must not be disposed of with household waste at the end of its life. You will find collection points for free return of waste electrical and electronic equipment in your vicinity. The addresses can be obtained from your municipality or local administration. You can also find out about other return options that apply for many EU countries on the website <https://hub.trotec.com/?id=45090> Otherwise, please contact an official recycling centre for electronic and electrical equipment authorized for your country.

The separate collection of waste electrical and electronic equipment aims to enable the re-use, recycling, and other forms of recovery of waste equipment as well as to prevent negative effects for the environment and human health caused by the disposal of hazardous substances potentially contained in the equipment.



In the European Union, batteries and accumulators must not be treated as domestic waste but must be disposed of professionally in accordance with Directive 2006/66/EC of the European Parliament and of the Council of 6 September 2006 on batteries and accumulators. Please dispose of batteries and accumulators according to the relevant legal requirements.

### Only for United Kingdom

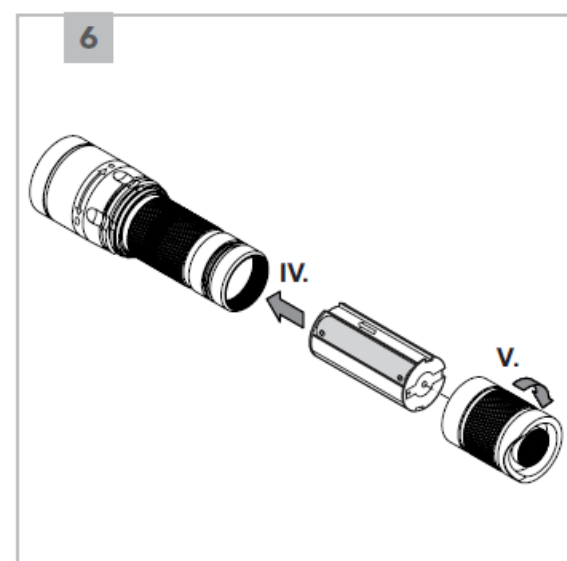
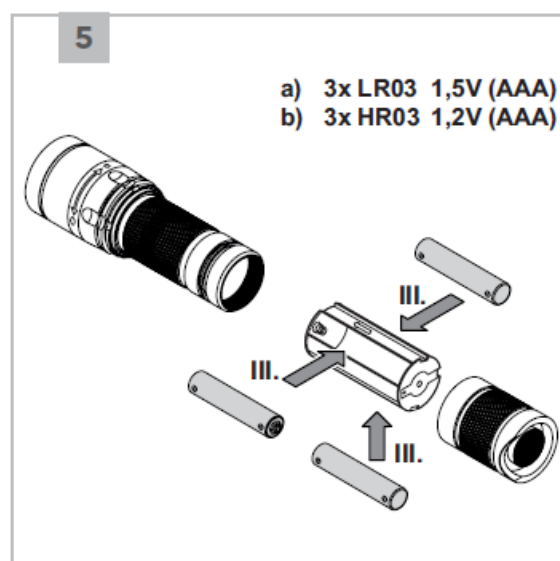
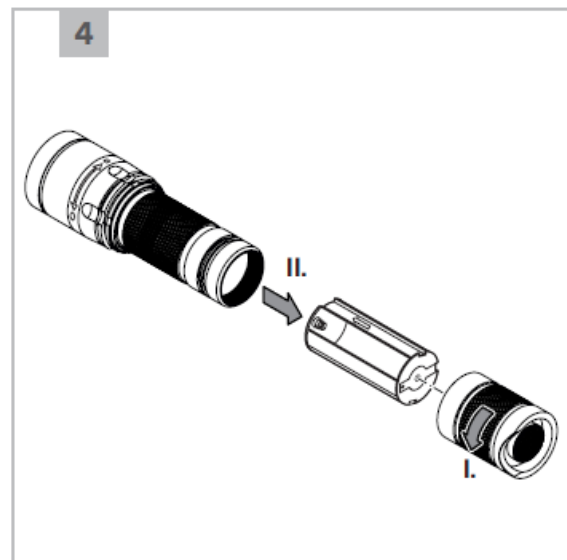
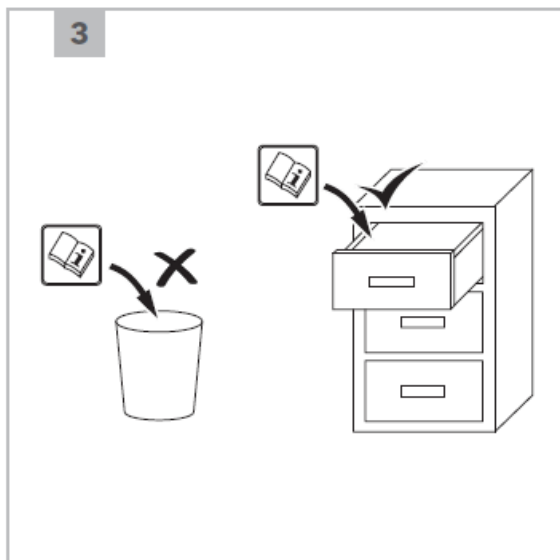
According to Waste Electrical and Electronic Equipment Regulations 2013 (SI 2013/3113) (as amended) and the Waste Batteries and Accumulators Regulations 2009 (SI 2009/890) (as amended), devices that are no longer usable must be collected separately and disposed of in an environmentally friendly manner.

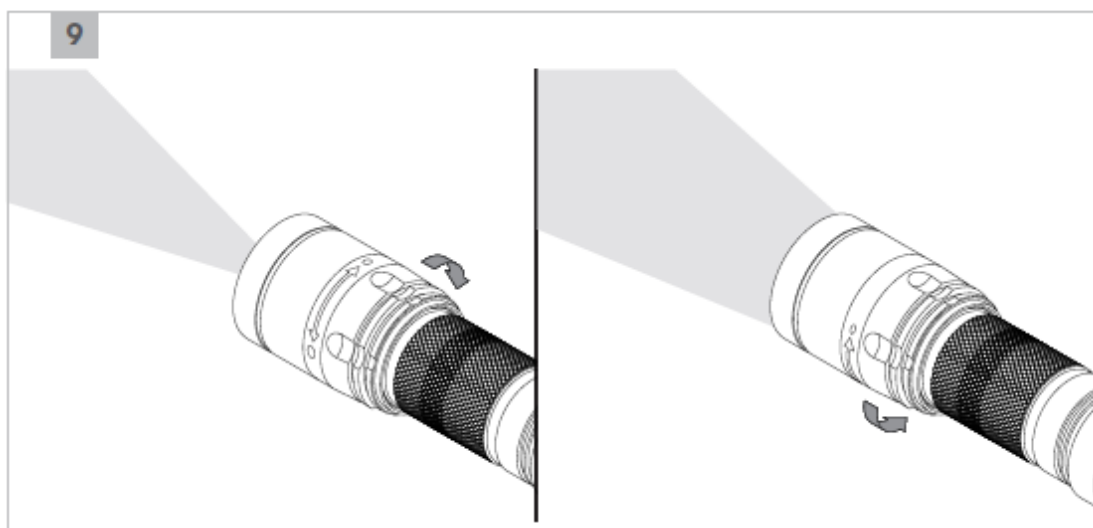
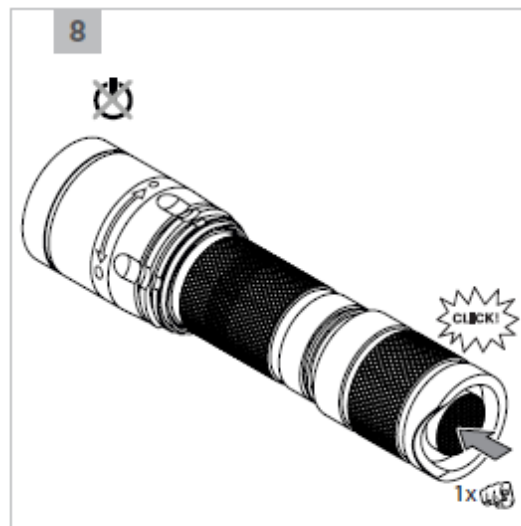
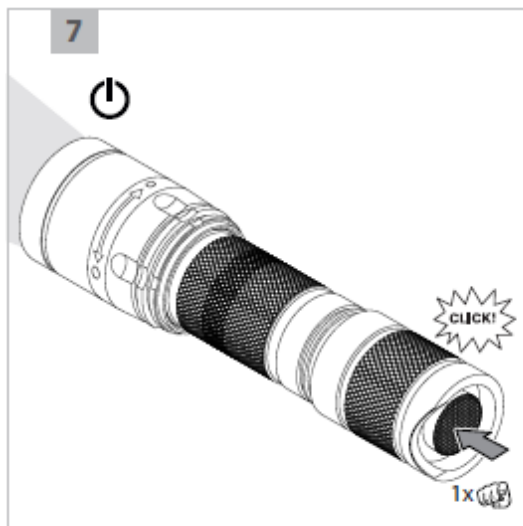
You can download the current version of the operating manual and the EU declaration of conformity via the following link:



<https://hub.trotec.com/?id=47535>

## Installation





## FAQ (Frequently Asked Questions)

**Q: How can I download the current version of the operating manual?**

**A:** You can download the current version of the operating manual and the EU declaration of conformity via the following link: [Download Link](#).

## Documents / Resources

	<p><b><a href="#">TROTEC UV-TORCHLIGHT 16F Rechargeable Ultraviolet LED Torch</a></b> [pdf] Installation Guide TRT-KA-UV-Torchlight_16F-TC-001, TRT-KA-UV-Torchlight 16F-TC240408TTT01-001, UV-TORCHLIGHT 16F Rechargeable Ultraviolet LED Torch, UV-TORCHLIGHT 16F, Rechargeable Ultraviolet LED Torch, Ultraviolet LED Torch, LED Torch</p>
--	---

## References

- [WEEE-Annahmestellen | Interzero - zero waste solutions](#)
- [hub.trotec.com/?id=47535I.II.IV.V.234516](https://hub.trotec.com/?id=47535I.II.IV.V.234516)
- [User Manual](#)

## **Manuals+. Privacy Policy**

This website is an independent publication and is neither affiliated with nor endorsed by any of the trademark owners. The "Bluetooth®" word mark and logos are registered trademarks owned by Bluetooth SIG, Inc. The "Wi-Fi®" word mark and logos are registered trademarks owned by the Wi-Fi Alliance. Any use of these marks on this website does not imply any affiliation with or endorsement.